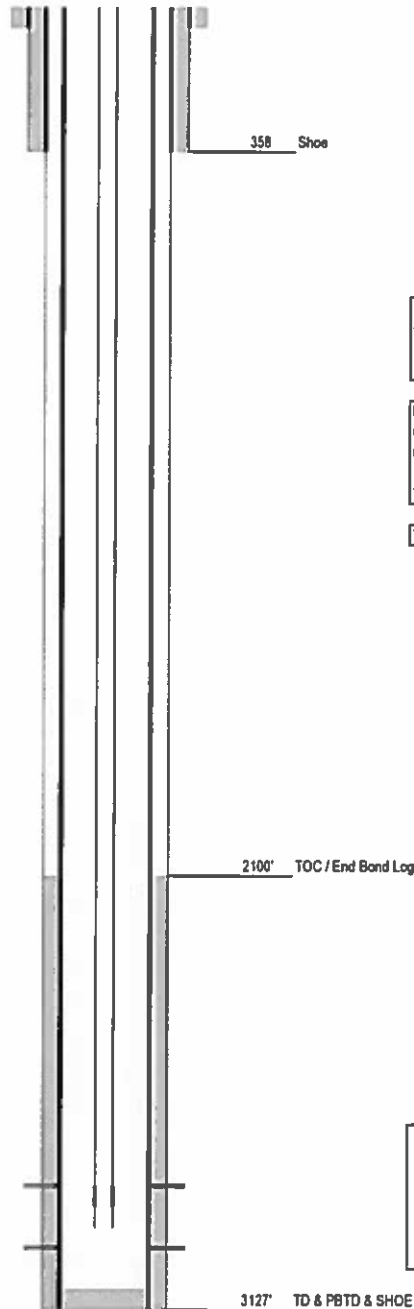


Laramie Energy

Current Wellbore Diagram

Not to Scale

Geological Tops	Depth
Williams Fork	1552'
Cameo	2323'
Rollins	2620'
Cozzette	2831'
Corcoran	3020'



Well Name Bronco Flats Federal 7-7
 API 05-077-08773-00
 Surface Location 1500' FNL & 1942' FEL SWNE S07 T09S R97W
 GPS Coordinates 39.290858 -108.258404
 Bottom Hole Loc NA
 Field Shire Gulch #77450
 County, State Mesa, CO
 Spud Date 10/13/2004
 Completion Date 12/25/2004
 Diagram Date 12/7/2018
 KB Elevation 5068'
 KB 13'
 GL Elevation 5055'

Surface Hole	12.25'
Casing	8.625" 24# @ 358'
Cement	200 sx
TOC	SURFACE (calc)

Production Hole	7.875" @ 3127'
Casing	5.5" 15.5# @ 3127'
Cement	Primary 200 sx, low TOC
	Squeeze 50/50 Pot G mix, est. TOC @ 1500'
TOC	2100' CBL dated 11/2/2004

Tubing	2-3/8" @ 3080, F Nipple @ 3070
--------	--------------------------------

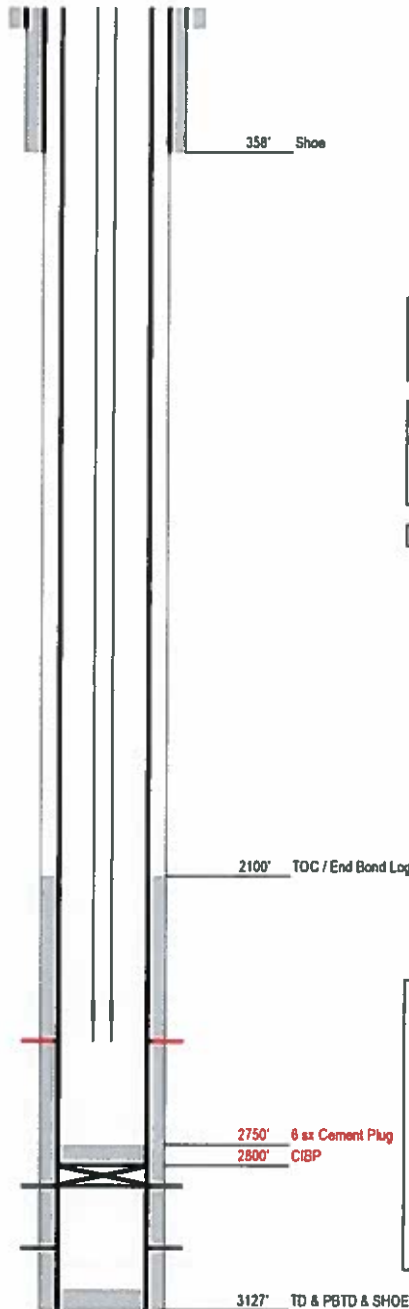
Perforations	Top	Bottom	Holes	Date
Cozzette	2830'	2964'	40	12/19/2004
Corcoran	3040'	3112'	42	12/19/2004
Squeeze Parts	3044'	3055'		10/30/2004

Laramie Energy

Proposed Cameo Coal Recompletion Wellbore Diagram

Not to Scale

Geological Tops	Depth
Williams Fork	1552'
Cameo	2323'
Rollins	2620'
Cozzette	2831'
Corcoran	3020'



Well Name: Bronco Flats Federal 7-7
 API: 05-077-08773-00
 Surface Location: 1500' FNL & 1942' FEL SWNE S07 T09S R97W
 GPS Coordinates: 39.290858 -108.258404
 Bottom Hole Loc: NA
 Field: Shire Gulch #77450
 County, State: Mesa, CO
 Spud Date: 10/13/2004
 Completion Date: 12/25/2004
 Diagram Date: 12/7/2018
 KB Elevation: 5066'
 KB: 13'
 GL Elevation: 5055'

Surface Hole	12.25'
Casing	8.625" 24# @ 358'
Cement	200 sx
TOC	SURFACE (calc)

Production Hole	7.875" @ 3127'
Casing	5.5" 15.5# @ 3127'
Cement	Primary 200 sx, low TOC
	Squeeze 50/50 Poz G mix, est. TOC @ 1500'
TOC	2100' CBL dated 11/2/2004

Tubing	2-3/8" @ 2550', F Nipple @ 2515'
--------	----------------------------------

Perforations	Top	Bottom	Holes	Date
Cameo Coal	2573'	2585'		PROPOSED
Cozzette	2830'	2964'	40	12/19/2004
Corcoran	3040'	3112'	42	12/19/2004
Squeeze Perfs	3044'	3055'		10/30/2004