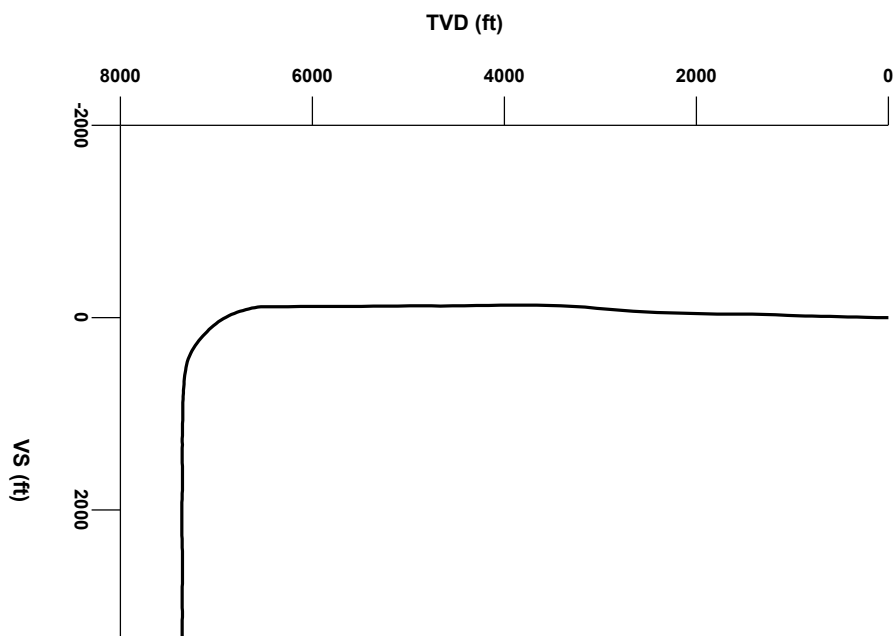


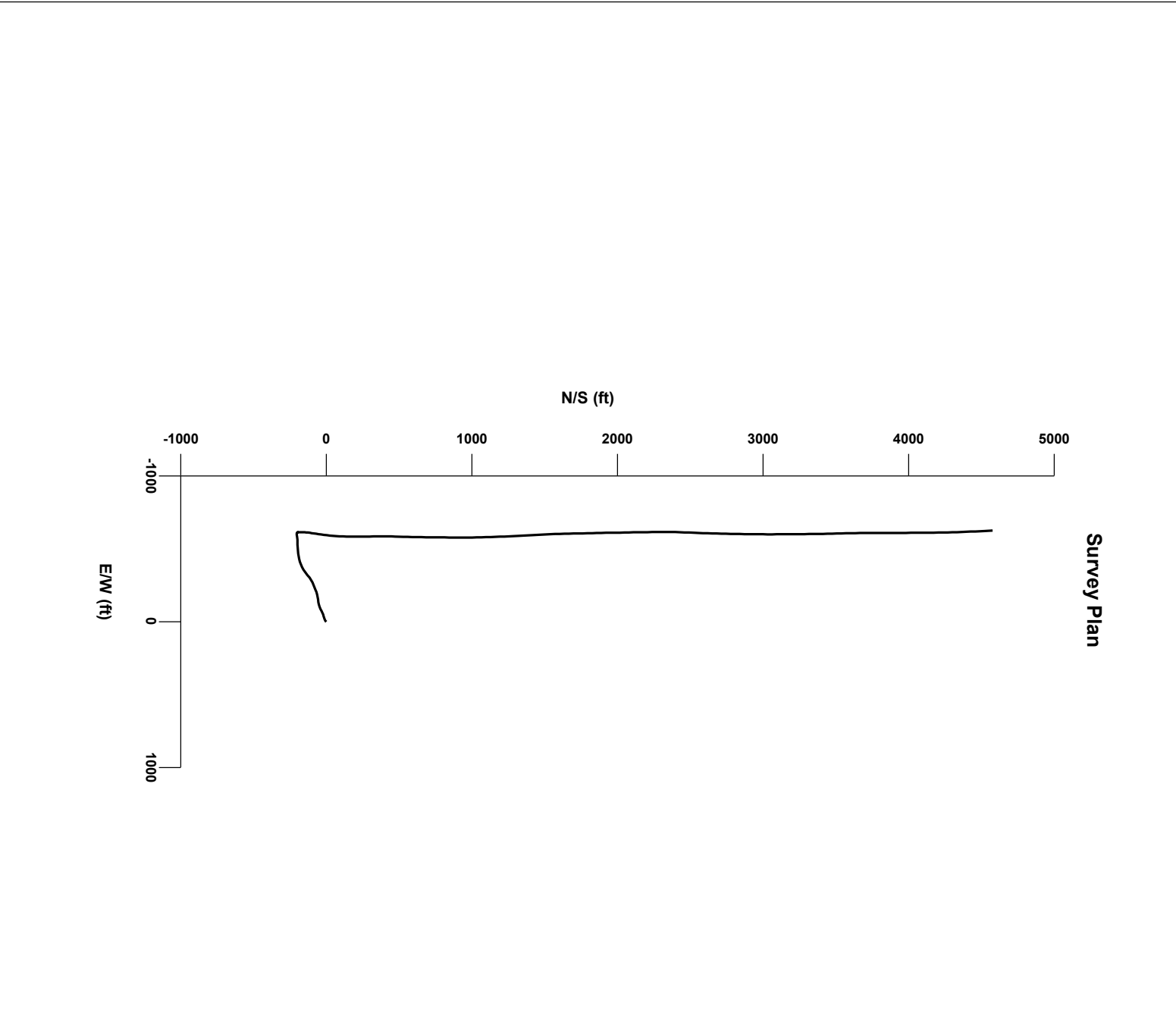
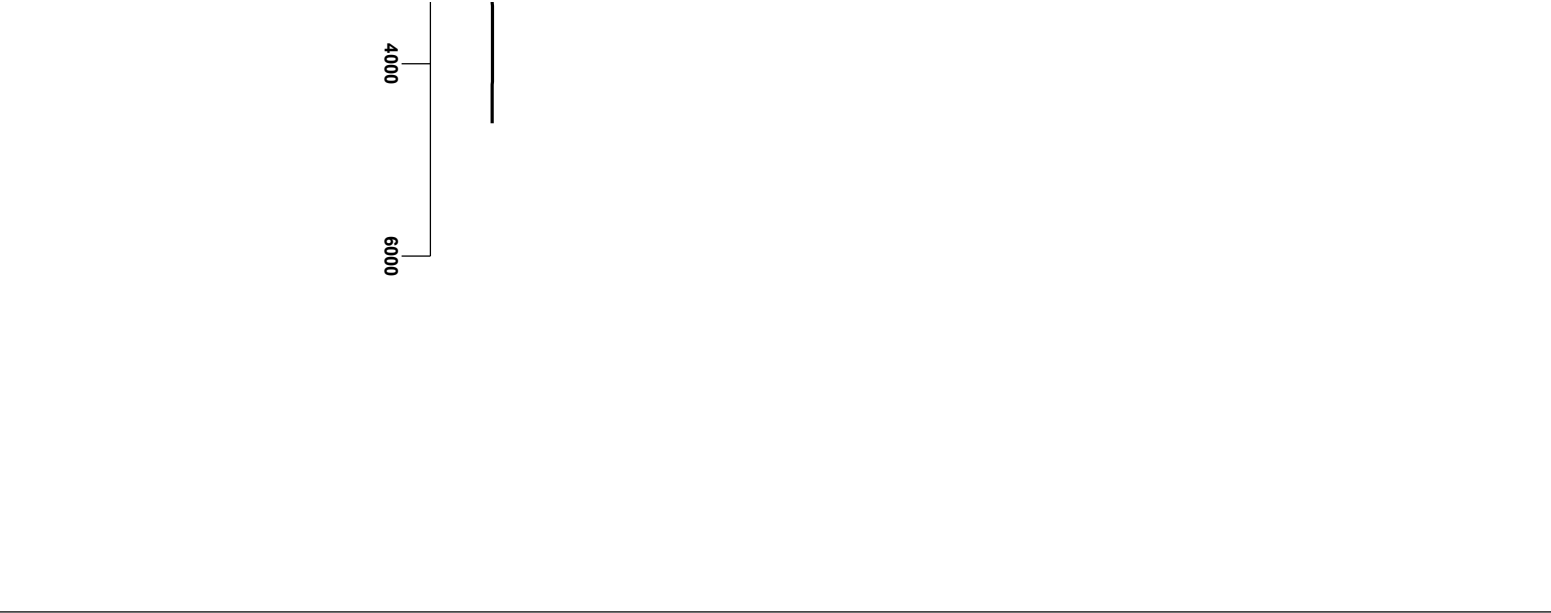


LOG created using Lplot VH Version 3.0, May 13, 2013, Copyright (C) 1999-2009 Pason Systems Corp.

OPERATOR: PDC ENERGY
WELL: DALTON 24Q-441
LOCATION: SESW SEC 24, 7N, 66W, 6TH
COUNTY: WELD
STATE: COLORADO
SPOT: 250' FSL x 2570' FWL
ELEVATION: GL 4,865' / KB 4,880'
FIELD: EATON
SPUD DATE: 5/5/2013
TD DATE: 5/13/2013
DATES LOGGED: 5/7/2013 - 5/13/2013
DEPTHS LOGGED: 6500' - 11,797'
LOGGERS: KEVIN DONAHUE & BRION BROWN
DRILLING FLUID: LSND
DRILLING RIG: ENSIGN #14
API: 05-123-36098-0000
LOG TYPE: CURVE/LATERAL
SCALE: 1:240 (5 inches per 100 feet)
REMARKS: WELLSITE GEOLOGICAL SERVICES PROVIDED BY COLUMBINE LOGGING, INC.

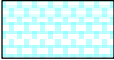


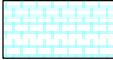
Survey Elevation








LITHOLOGIES


Chalk

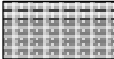
Limestone

Marl


Sandstone


Shaly Sandstone


Shaly Siltstone


Silty Shale


ENGINEERING SYMBOLS


Bit Change


Casing

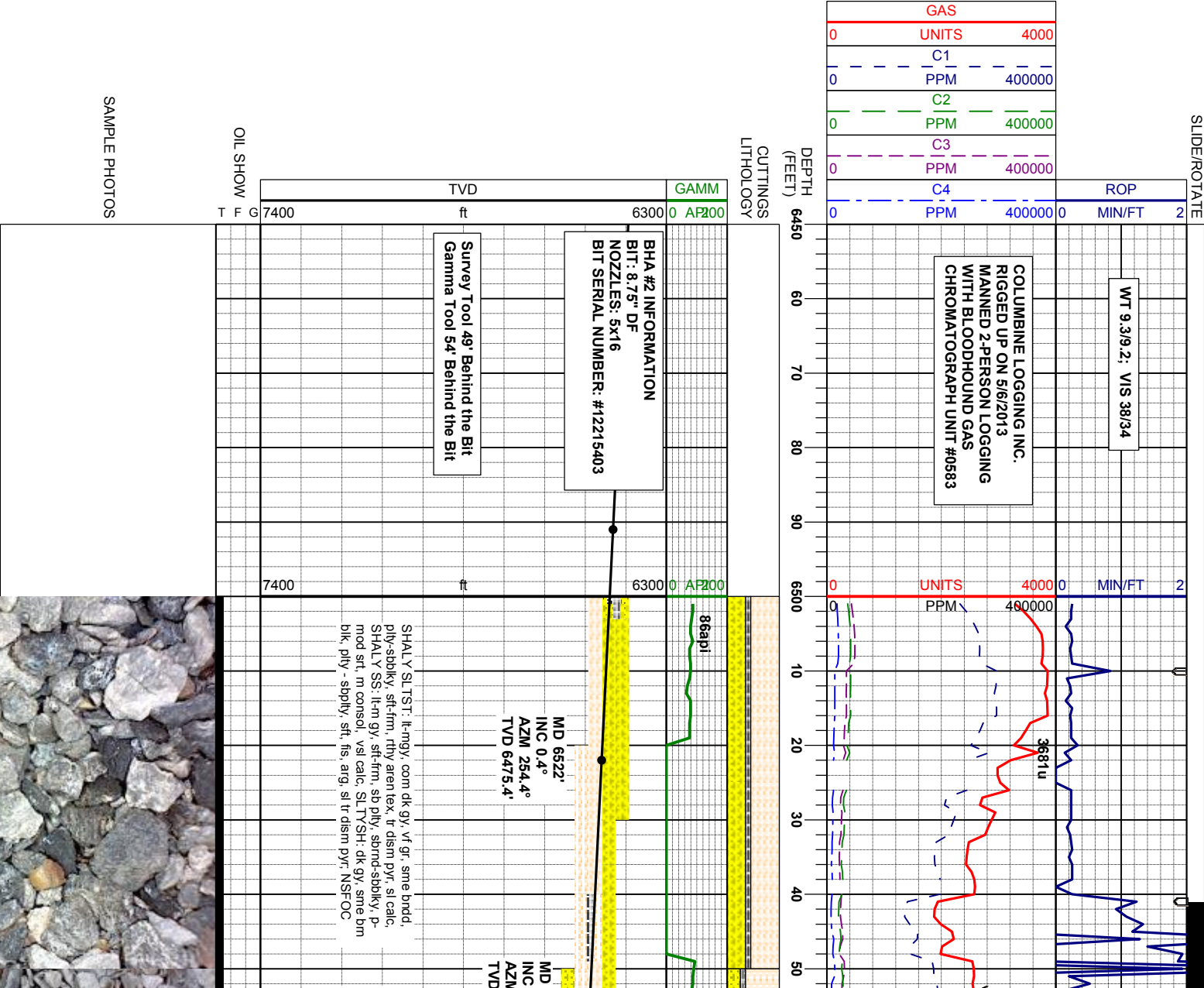
Casing

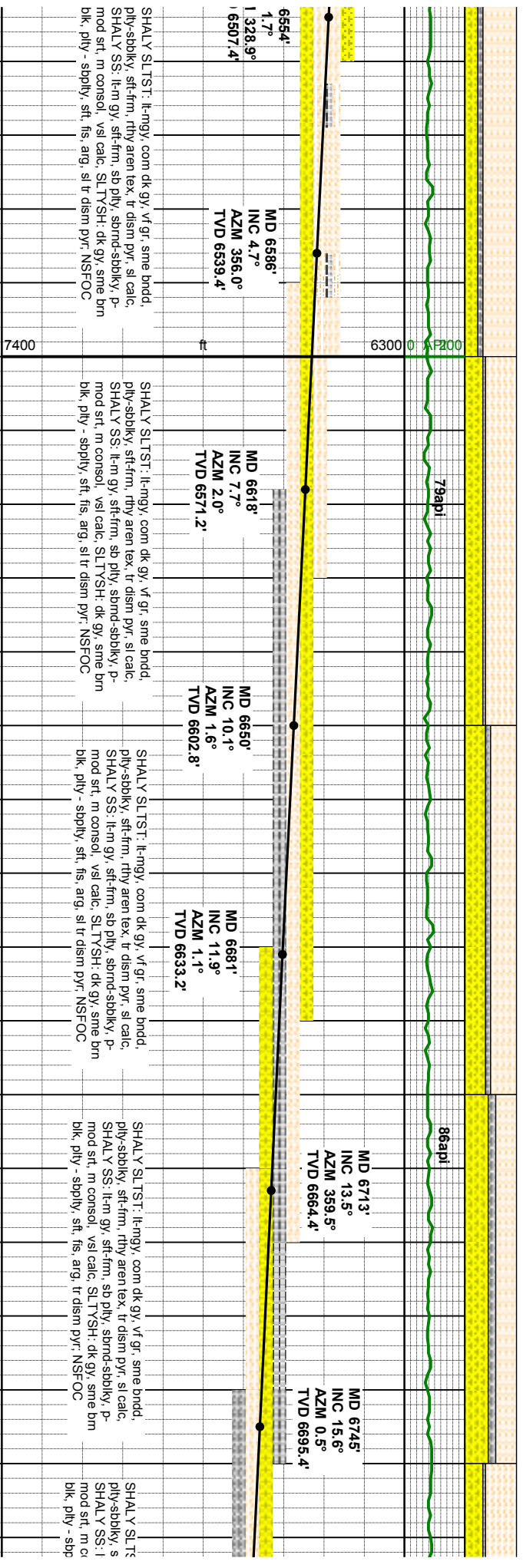
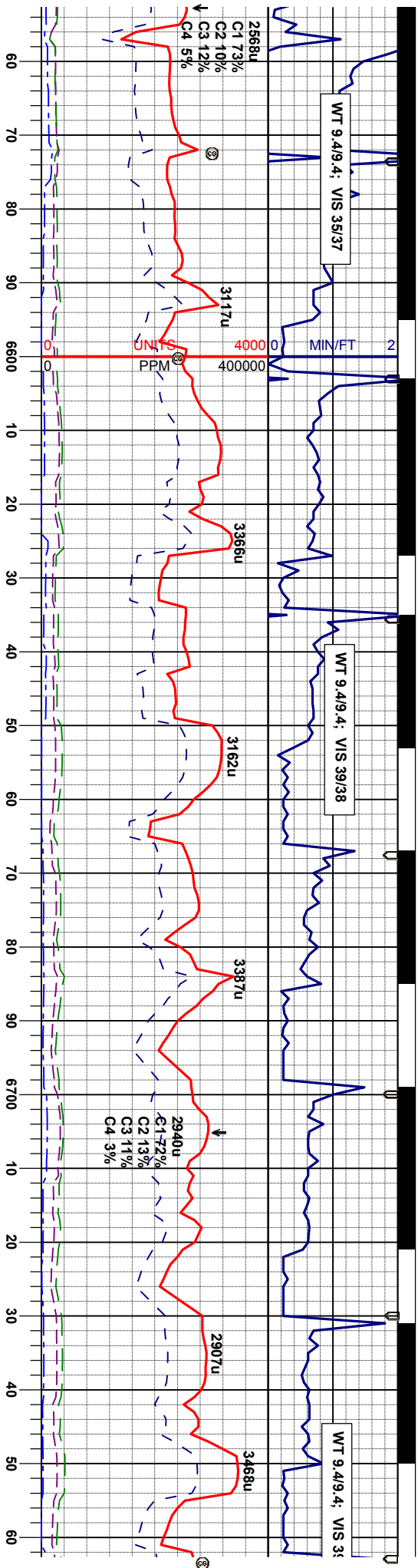
Connection

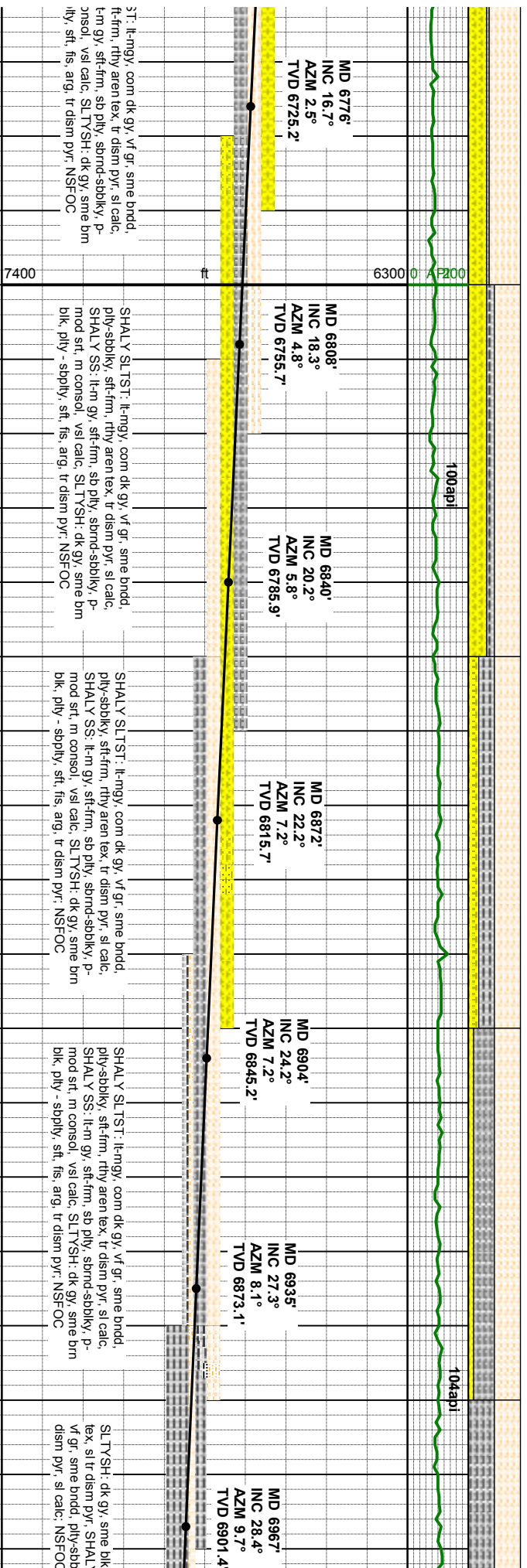
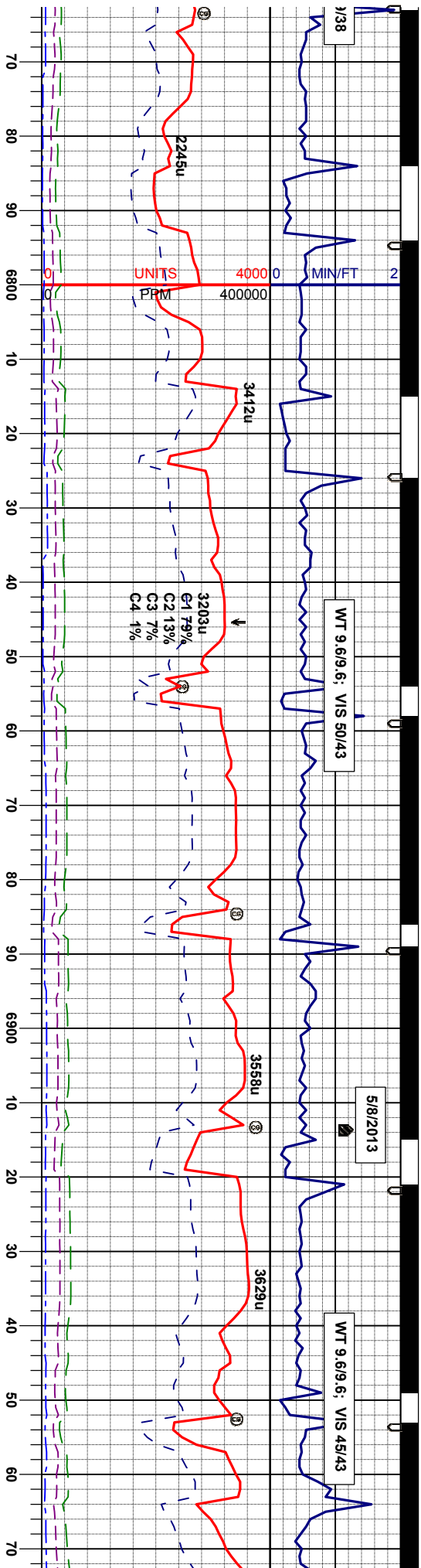
Connection Gas

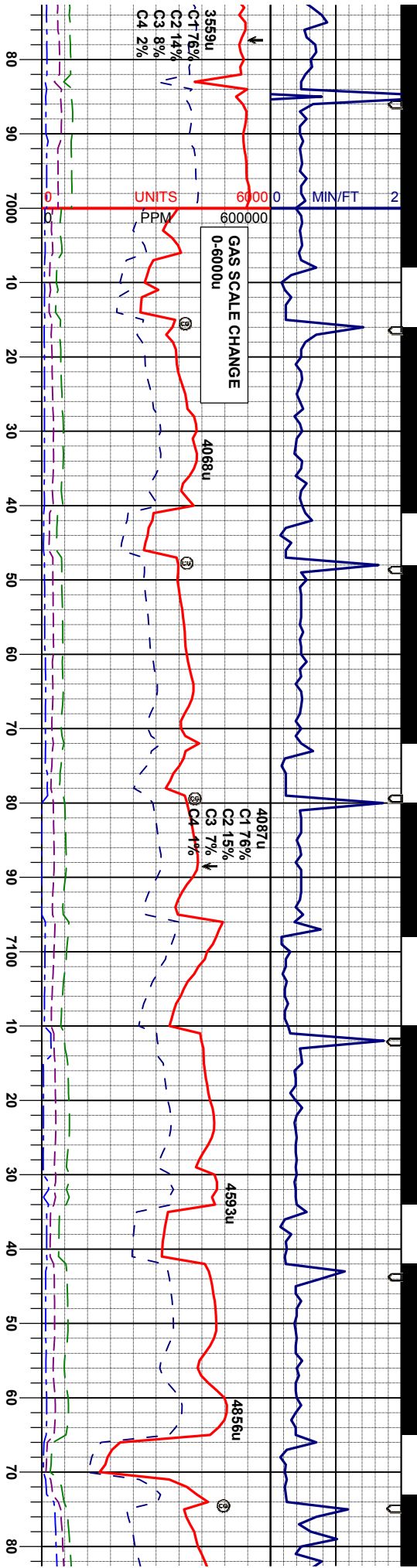
Arrow

Midnight Depth







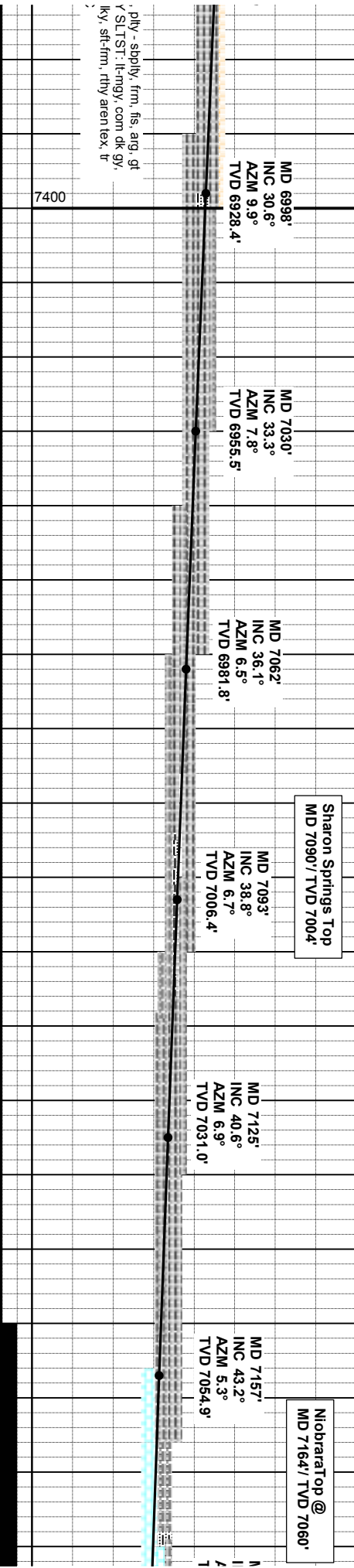


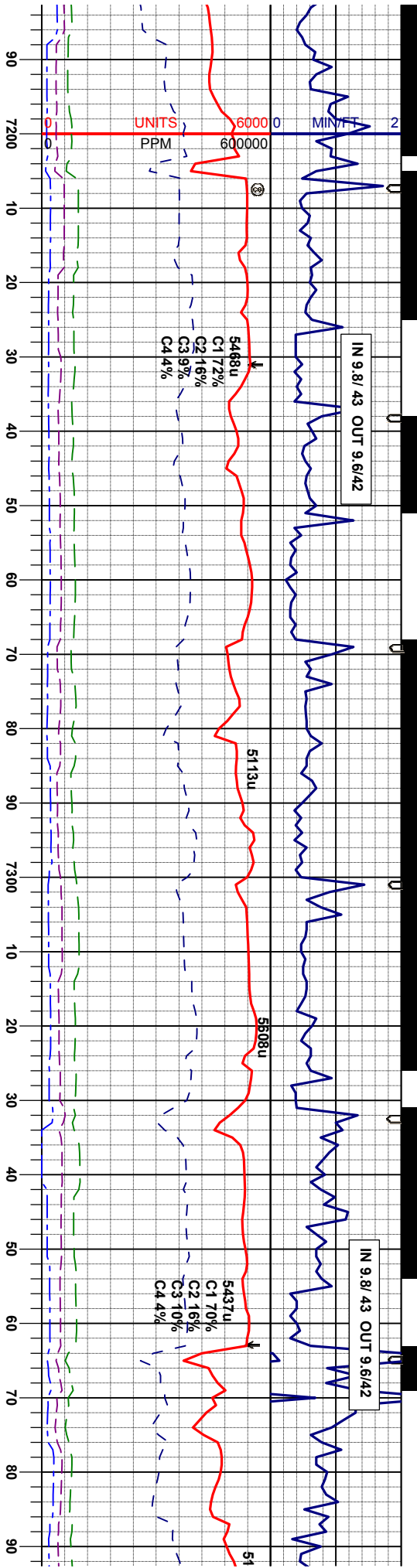
SLT YSH: dk gy, sme blk, pily - sbply, frm, fis, arg, gt
tex, sl tr dism pyr, SHALY SLTST: lt-rgy, com dk gy,
vr gr, sme brnd, pily-sbply, sft-frm, rthy aren tex, tr
dism pyr, sl calc: NSFOC

SLT YSH: dk gy, sme blk, pily - sbply, frm, fis, arg, gt
tex, sl tr dism pyr, SHALY SLTST: lt-rgy, com dk gy,
vr gr, sme brnd, pily-sbply, sft-frm, rthy aren tex, tr
dism pyr, sl calc: NSFOC

SLT YSH: dk gy, sme blk, pily - sbply, frm, fis, arg, gt
tex, sl tr dism pyr, SHALY SLTST: lt-rgy, com dk gy,
vr gr, sme brnd, pily-sbply, sft-frm, rthy aren tex, tr
dism pyr, sl calc: NSFOC

CHK: lt-m gy, sft, sb pily & blk, rthy-
lam tex, v calc, r tos, n flor, stmg br
MRL: m-dk gy, sft, sb blk, rthy sft, n
org mat.





sb wxy lstr. mot & yel cut. lt yel sn. not tex v calc w/

MRU: m-dk gy, blk, sft, sb biky, rthy lstr. mot & lam tex, v calc w/ org mat, r r fcs, intbd w CHK: m gy, sft, sb biky, rthy, mot tex, v calc n flor, fast string bri yel cut. lt yel sn.

CHK: lk-m gy, sft, sb ply & biky, rthy-sb wxy lstr. mot & lam tex, v calc, r r fcs, n flor, string bri yel cut. lt yel sn. MRU: m-dk gy, sft, sb biky, rthy lstr. mot tex v calc w/ org mat.

CHK: lk-m gy, sft, sb ply & biky, rthy-sb wxy lstr. mot & lam tex, v calc, r r fcs, n flor, string bri yel cut. lt yel sn. MRU: m-dk gy, sft, sb biky, rthy lstr. mot tex v calc w/ org mat.

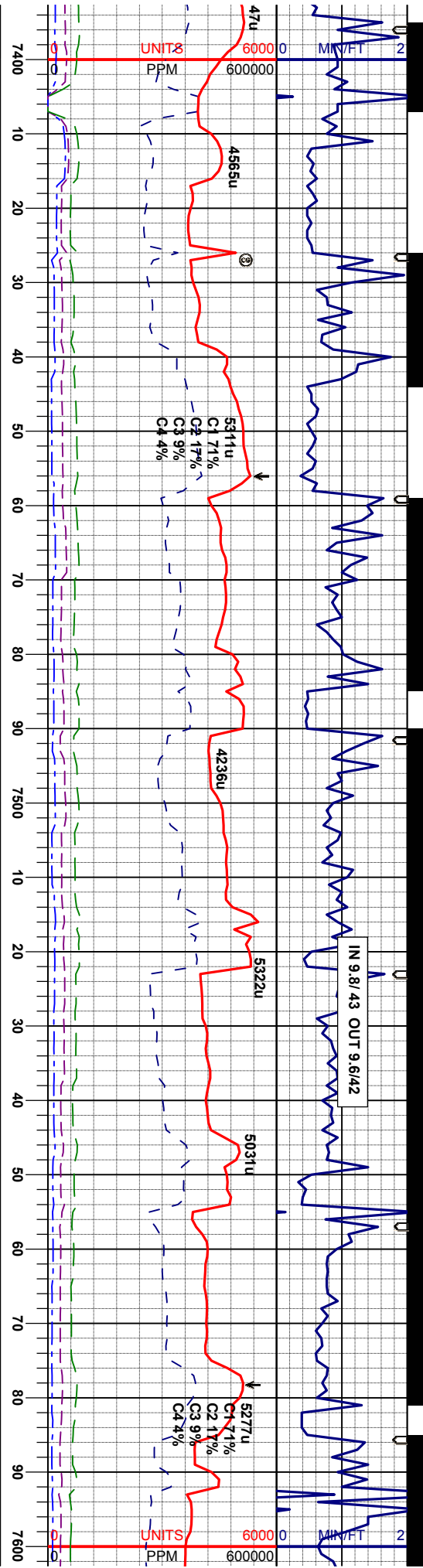
MRU: m-dk gy, blk, sft, sb biky, rthy lstr. mot & lam t v calc w/ org mat, r r fcs, intbd w CHK: m gy, sft, sb biky, rthy, mot tex, v calc n flor, fast string bri yel cut. yel sn.

Niobrara A @
MD 7202' TVD 7087'

Niobrara B @
MD 7302' TVD 7155'

AD 7189'	MD 7220'	MD 7252'	MD 7283'	MD 7315'	MD 7347'	MD 7378'
INC 44.4°	INC 45.9°	INC 47.2°	INC 48.2°	INC 49.8°	INC 51.7°	INC 54.2°
AZM 5.8°	AZM 4.8°	AZM 2.8°	AZM 1.21°	AZM 2.5°	AZM 1.1°	AZM 359.7°
TVD 7077.9'	TVD 7099.8'	TVD 7121.8'	TVD 7142.7'	TVD 7163.7'	TVD 7183.9'	TVD 7202.6'





ex. 6300 0 AP 000

MRL: m-dk gy, blk, sft, sb blk & ply, rthy-sb wxy lstr, mot lam tex, v calc w/ org mat, & t fos, CHK: lt gy, m gy, sft, sb blk, rthy lstr, mot tex, v calc t fos, n flor, stmg brn yel cut, lt yel sn

MRL: m-dk gy & blk, sft, sb blk, rthy-sb wxy lstr, mot sb fos tex, v calc, m fos, org mat, CHK: m gy, sft, sb blk, rthy, musky tex, v calc, aren, n flor, stmg m yel cut, m yel brn sn

CHK: m gy, sft-v sft, sb blk, rthy-wxy lstr, musky tex, v calc t fos, MRL: m-dk gy & blk, sft, ply & blk, rthy-sb wxy lstr, lam tex, v calc n flor, stmg yel cut

MRL: m-dk gy-blk, sft, ply, rthy lstr, sb grty-mot tex, m calc intbd w/ SLTY SH, blk, sft, ply, t pyr, sh-n calc n flor, stmg lt yel cut, lt yel sn

6300 0 AP 000

ft

MD 7410' INC 56.5° AZM 359.3° TVD 7220.8'

MD 7442' INC 58.2° AZM 359.3° TVD 7238.1'

Niobrara C @ MD 7442' TVD 7238'

MD 7474' INC 60.2° AZM 359.3° TVD 7254.4'

MD 7505' INC 63.0° AZM 359.3° TVD 7289.2'

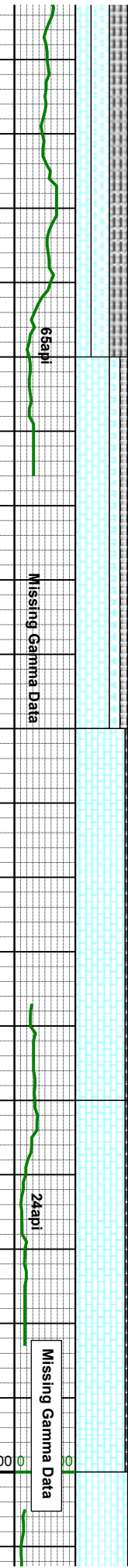
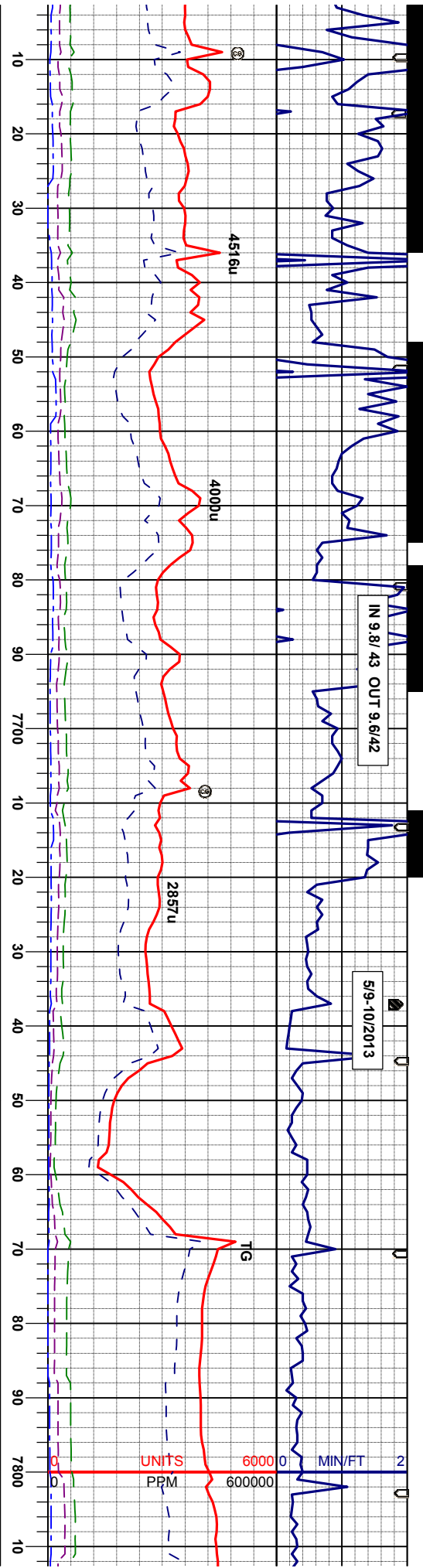
MD 7537' INC 66.7° AZM 359.0° TVD 7282.7'

MD 7568' INC 70.5° AZM 358.8° TVD 7294.1'

MD 7600' INC 73.2° AZM 0.0° TVD 7304'

ft





MR: m-dk gy & blk, sft, pty & bky, rthy, -sub met lstr, mot tex, v calc, ooc fos, ooc dism pyr, inbd w/ LS; lt gy, crm, sft-frm, sb pty, rthy lstr, mic tex, v calc n flor, tr ring cut in sft

LS: crm, off wh, sft-n frm, sb pty, rthy lstr, mic xln-aren tex, v calc tr fos, tr dism pyr, inbd w/ SLTY SH; lt gy, frm, pty, sl calc, n vis por, n flor, tr ring cut,

LS: crm, off wh, sft-n frm, sb pty, rthy lstr, mic xln-aren tex, v calc tr fos, tr dism pyr, inbd w/ SLTY SH; lt gy, frm, pty, sl calc, n vis por, n flor, tr ring cut,

LS: wh, crm, lt gy, sft-frm, sb pty & bky, wxy lstr, smth mic xl tex, v calc tr dism pyr, inbd w/ SLTY SH; lt gy, sft, pty, rthy lstr, lam tex, sl calc n flor, tr ring cut,

LS: wh, crm mic xl tex, v sft, pty, rthy

Fort Hayes LS @
MD 7631' / TVD 7312'

MD 7632'
INC 76.8°
AZM 0.9°
TVD 7312.3'

MD 7664'
INC 80.1°
AZM 1.4°
TVD 7318.7'

MD 7689'
INC 82.4°
AZM 2.0°
TVD 7322.5'

Bit #3
6.12"
SMITH
SD1513

From MD 7737'
Survey 54' Back
Gamma 59' Back

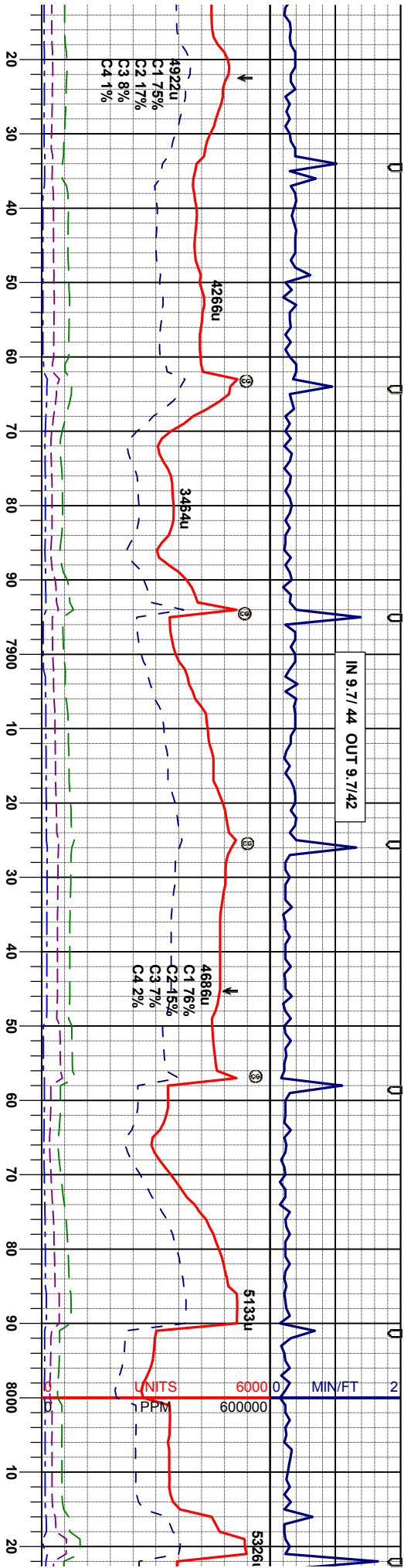
7" Intermediate Casing @
MD 7718' / TVD 7326'

MD 7746'
INC 82.5°
AZM 1.5°
TVD 7330.0'

MD 7777'
INC 84.4°
AZM 1.1°
TVD 7333.6'

MD 7809'
INC 84.7°
AZM 1.1°
TVD 7336





19api

LS: tan, wh, crm, lt gy, sf, frm, sb ply & blk, wxy lstr, smth-mic xl tex, v calc tr dism pyr, mbd w/ SLTY SH: lt gy, gy, sft, ply, rthy lstr, lam tex, sl calc n flor, tr lt yel ring cut.

43api

LS: tan, wh, crm, lt gy, sf, frm, sb ply & blk, wxy lstr, smth-mic xl tex, v calc tr dism pyr, n flor, tr lt yel ring cut.

54api

LS: tan, wh, crm, lt gy, sf, smth-mic xl tex, v calc tr dism pyr, n flor, tr lt yel ring cut. SS: trns lt & m gy, fir m consol, sl calc cntl, n vi yel-blw cut, lt yel brn sin

MD 7840' INC 85.3° AZM 0.9° TVD 7339.3'

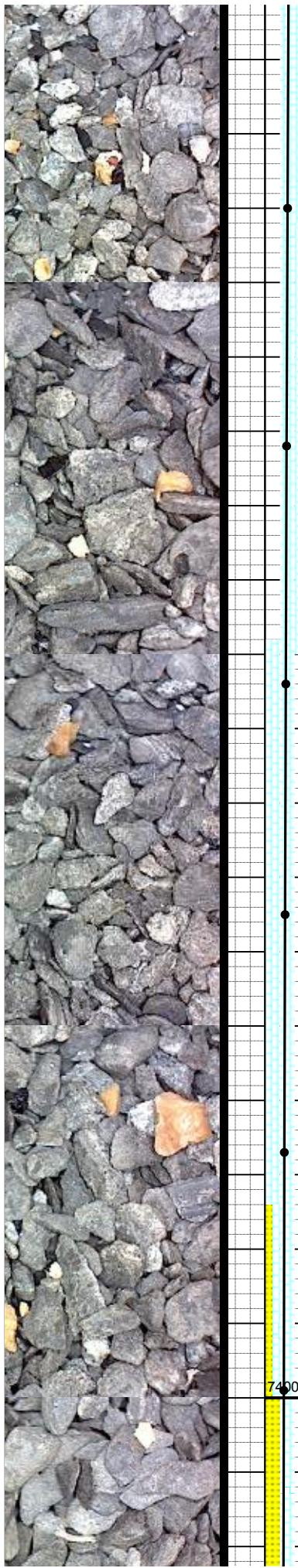
MD 7872' INC 85.6° AZM 0.7° TVD 7341.8'

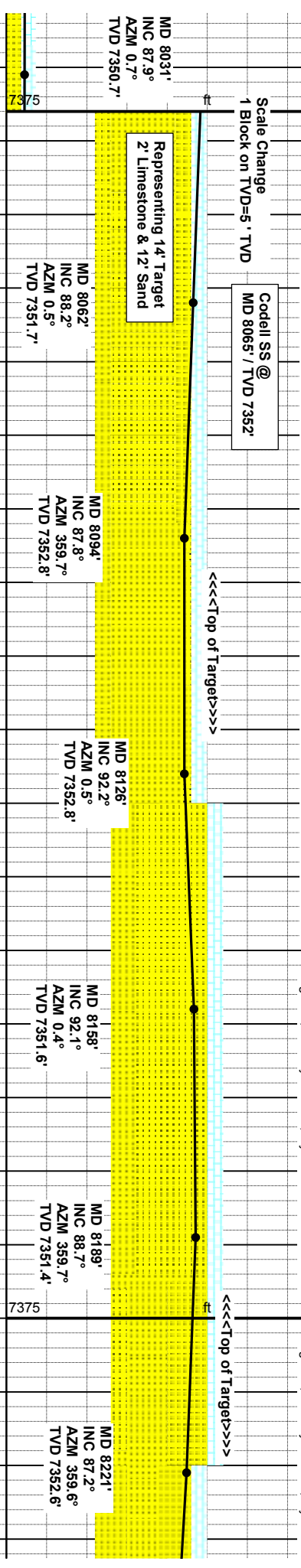
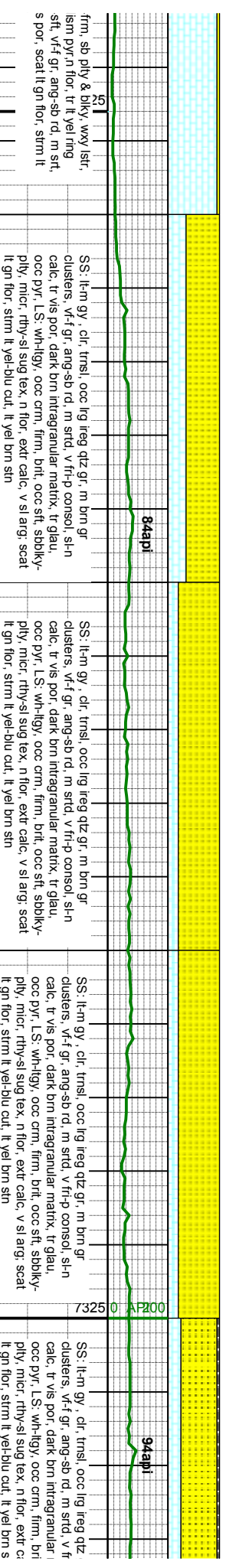
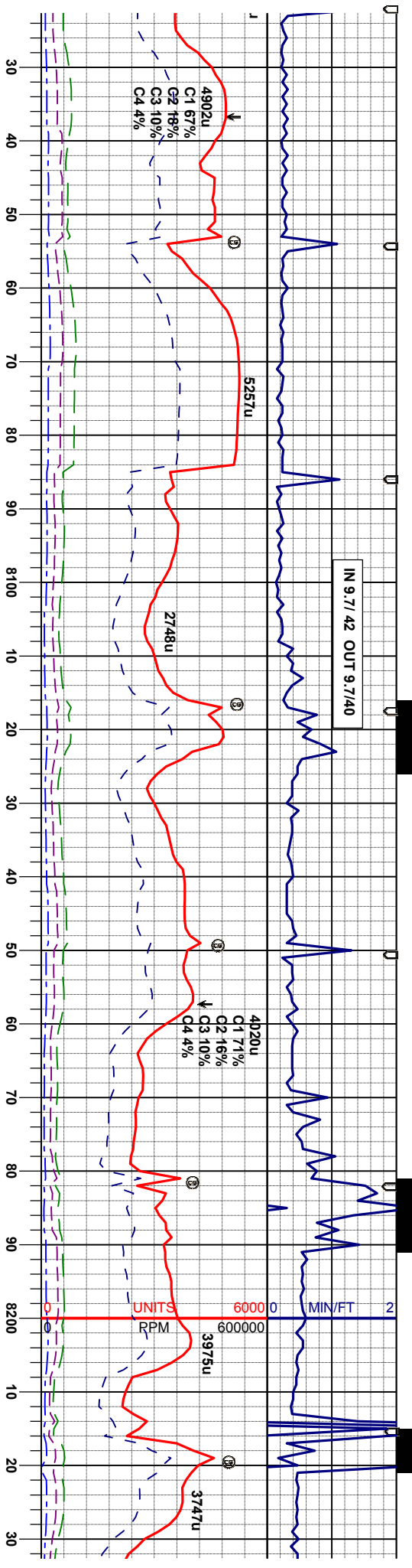
MD 7904' INC 86.1° AZM 0.7° TVD 7344.2'

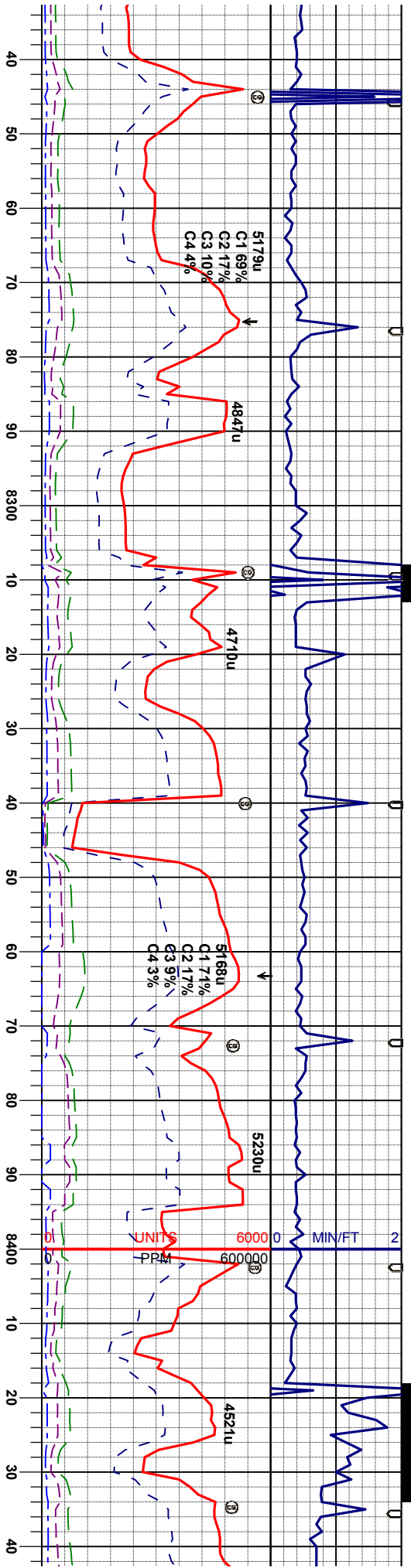
MD 7935' INC 86.6° AZM 0.5° TVD 7346.1'

MD 7967' INC 87.1° AZM 0.7° TVD 7347.9'

MD 7999' INC 87.5° AZM 0.7° TVD 7349.4'





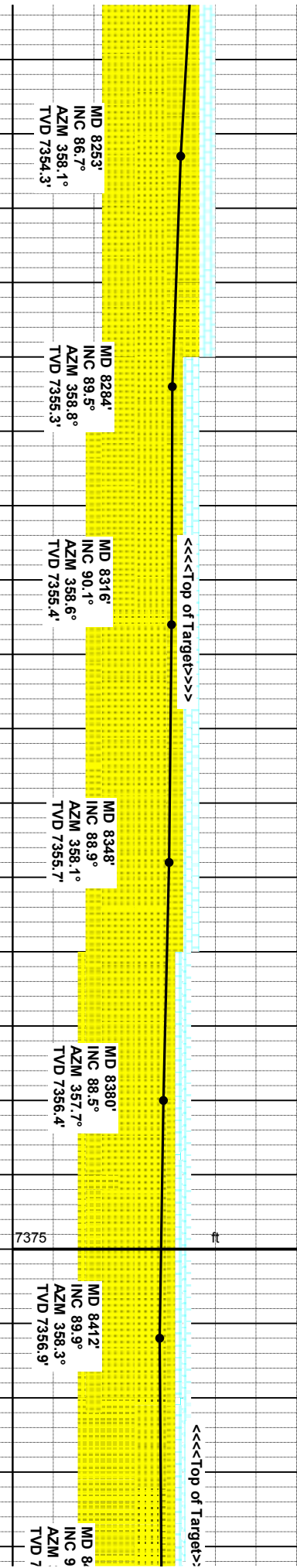


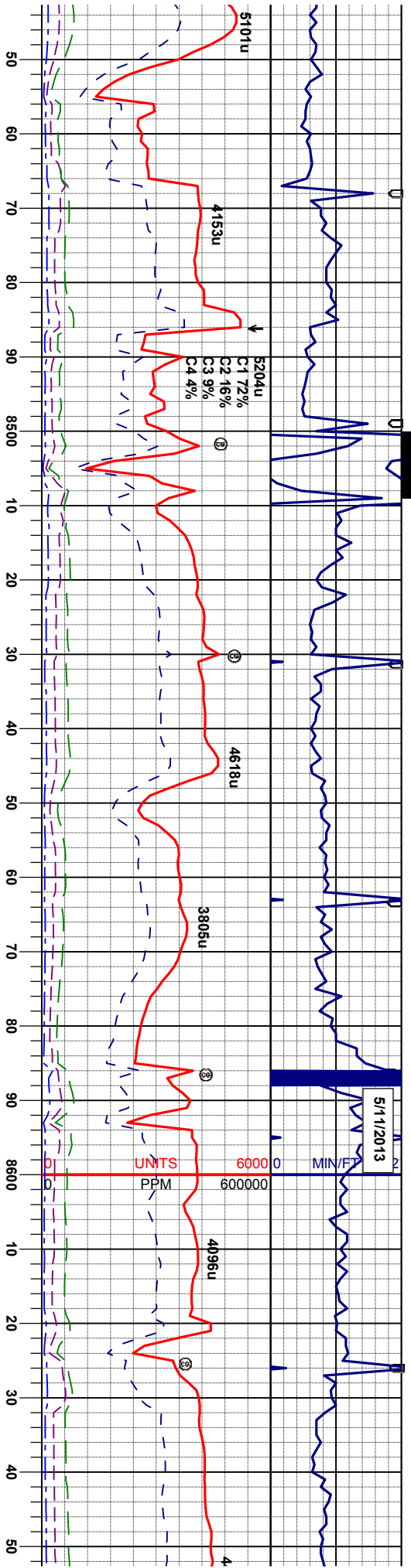
gr. m brn gr
h-p consol, sh-n
matrix, tr glau,
t, occ sft, sbblly-
alc, v sl arg; scat
in

SS: lt-m gy, clr, trns, occ lg irreg dtz gr, m brn gr
clusters, v-f gr, ang-sb rd, m srd, v fr-p consol, sh-n
calc, tr vis por, dark brn intragranular matrix, tr glau,
occ pyr, LS: wh-ty, occ cm, firm, brt, occ sft, sbblly-
ply, micr, rthy-sl sug tex, n flor, extr calc, v sl arg; scat
lt gn flor, strn lt yel-blu cut, lt yel brn sin

SS: lt-m gy, clr, trns, occ lg irreg dtz gr, m brn gr
clusters, v-f gr, ang-sb rd, m srd, v fr-p consol, sh-n
calc, tr vis por, dark brn intragranular matrix, tr glau,
occ pyr, SLTYSH: m-dk gy & blk, sft, sb ply, rthy, lam,
bioturb in part, tr pyr, sl calc, n flor, occ pyr; strn lt yel-
blu cut, lt yel brn sin

SS: lt-m gy, clr, trns, occ lg irreg dtz gr, m brn gr
clusters, v-f gr, ang-sb rd, m srd, v fr-p consol, sh-n
calc, tr vis por, dark brn intragranular matrix, tr glau,
occ pyr, SLTYSH: m-dk gy & blk, sft, sb ply, rthy, lam,
bioturb in part, tr pyr, sl calc, n flor, occ pyr; strn lt yel-
blu cut, lt yel brn sin





SS: lt-m gy, cl, trns, occ lg ireg qtz gr, m brn gr clusters, vf-f gr, ang-sb rd, m srt, v fr-p consol, sl-n calc, tr vis por, dark brn intragranular matrix, tr glau, occ pyr, SLTYSH: m-dk gy & blk, sft, sb ply, rthy, lam, bioturb in part, tr pyr, sl calc, n flor, occ pyr, strn lt yel-blu cut, lt yel brn sin

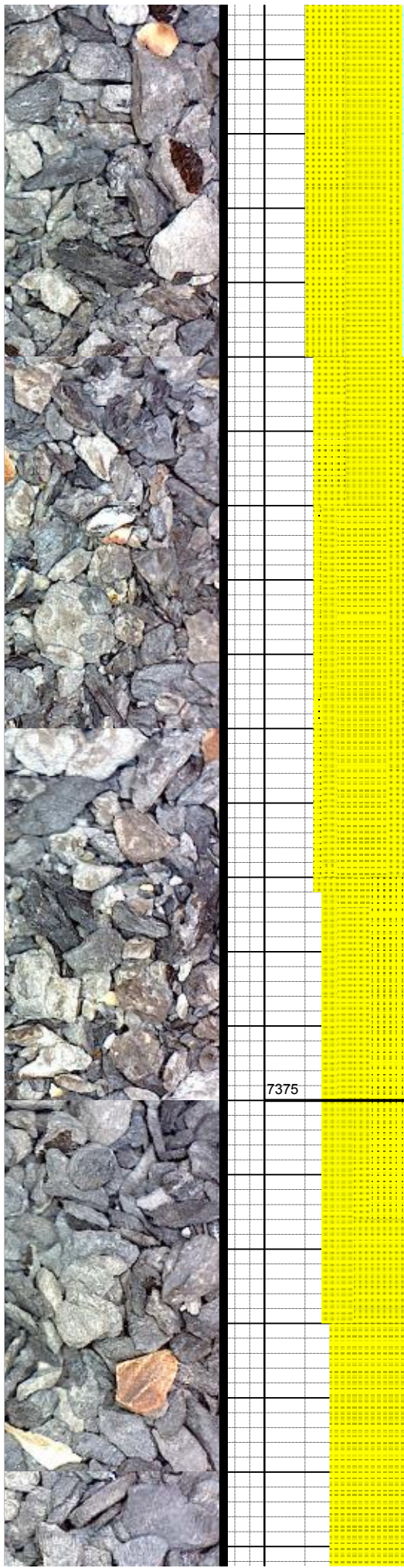
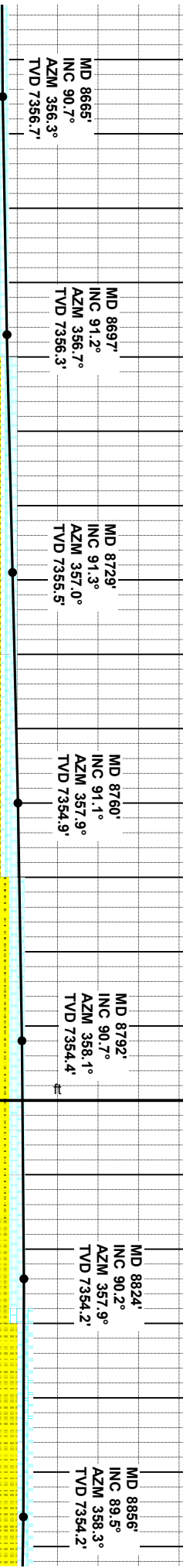
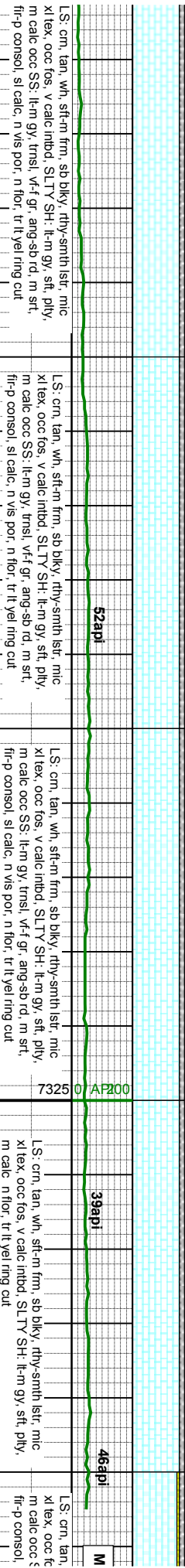
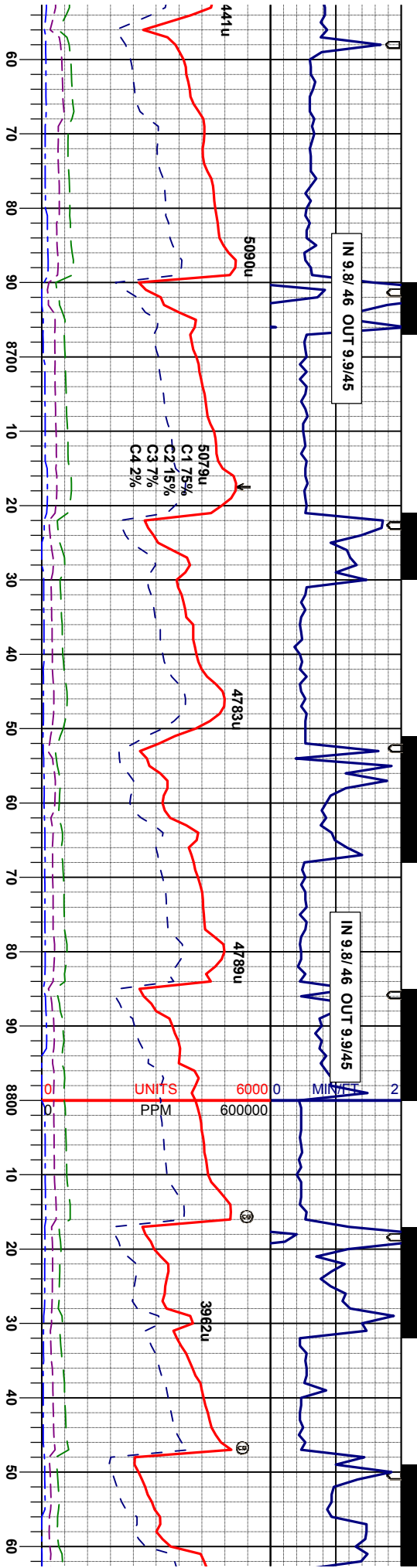
SS: lt-m gy, cl, trns, occ lg ireg qtz gr, m brn gr clusters, vf-f gr, ang-sb rd, m srt, v fr-p consol, sl-n calc, tr vis por, dark brn intragranular matrix, tr glau, occ pyr, LS: wh-lgy, occ cm, firm, brt, occ sft, sbiky-ply, micr, rthy-sug tex, n flor, extr calc, v sl ang, scat lt gn flor, strn lt yel-blu cut, lt yel brn sin

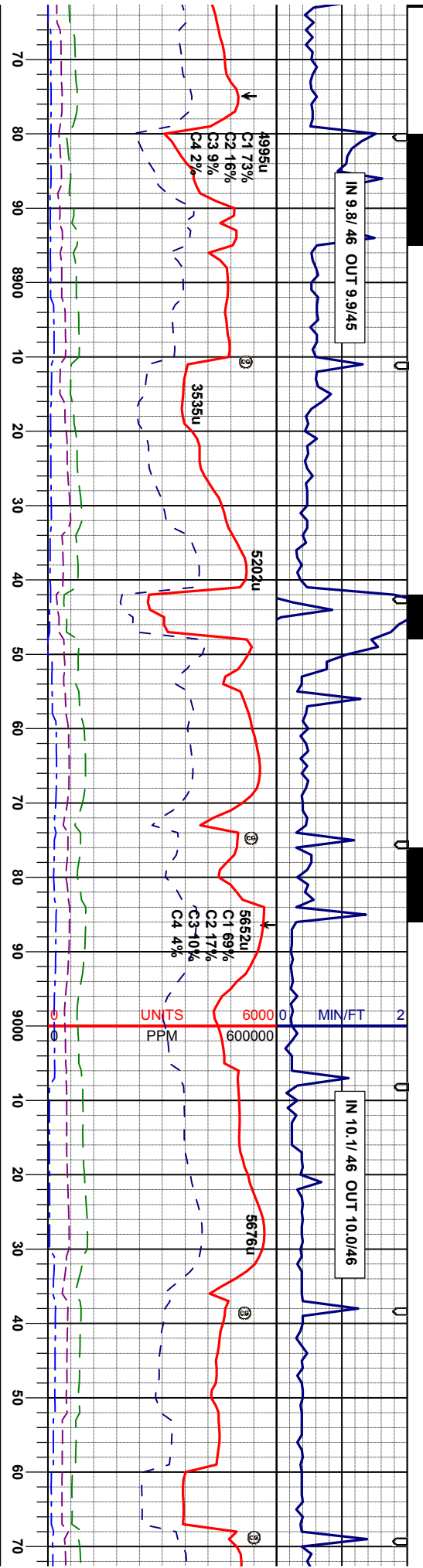
LS: cm, tan, wh, sft-m frm, sb blk, rthy-smth lstr, mic xl tex, occ fos, v calc inbd, SLTY SH: lt-m gy, sft, ply, m calc occ SS: lt-m gy, trns, vf-f gr, ang-sb rd, m srt, fr-p consol, sl calc, n vis por, n flor, tr lt yel ring cut

LS: cm, tan, wh, sft-m frm, sb blk, rthy-smth lstr, mic xl tex, occ fos, v calc inbd, SLTY SH: lt-m gy, sft, ply, m calc occ SS: lt-m gy, trns, vf-f gr, ang-sb rd, m srt, fr-p consol, sl calc, n vis por, n flor, tr lt yel ring cut

MD 8475' INC 89.6° AZM 357.7° TVD 7356.5'	MD 8507' INC 89.3° AZM 357.2° TVD 7356.8'	MD 8539' INC 90.2° AZM 357.6° TVD 7356.9'	MD 8570' INC 90.1° AZM 357.0° TVD 7356.9'	MD 8602' INC 89.8° AZM 356.9° TVD 7356.9'	MD 8634' INC 90° AZM 356.5° TVD 7356.9'
---	---	---	---	---	---







Issing Gamma Data

wh. sft-m frm. sb. blkly. rthy-smth lst. mic
ss. v calc inhd. SLTY SH. lk-m gy. sft. ply.
3S. lk-m gy. trnsi. vrf gr. ang-sb rd. m srt.
sl calc. n vis por. n flor. tr. lk yel ring cut

SS. cl. trnsi. lk gy. vrf-m gr. ang-sb rd. m srt. p consol.
sl calc cmf. pred ise gr clus. sl calc inhd w/ LScrm.
tan. wh. frm. sb ply-sb blkly. rthy lst. mic xl tex. v calc
occ fos. n flor. tr ring cut.

SS. lk-m gy. cl. trnsi. occ lig ling qtz gr. m bm gr
clusters. vrf gr. ang-sb rd. m srt. v fr-p consol. sl n
calc. tr vis por. dark bm intragranular matrix. tr glau.
occ pyr. SLTYSH. m-dk gy & blk. sft. sb ply. rthy. lam.
bioturb in part. tr pyr. sl calc. n flor. occ pyr. stim lk yel-
blu cut. lk yel bm stn

SS. m-dk gy. trnsi. m gy bm gr clusters. vrf gr. ang-sb
rd. m srt. v fr-p consol. sl n calc. tr vis por. dark bm
intragranular matrix. tr glau. occ pyr. SLTYSH. m-dk gy
& blk. sft. sb ply. rthy. lam. bioturb in part. tr pyr. sl
calc. n flor. occ pyr. stim lk yel-blu cut. lk yel bm stn.
LS: tan. crm. sft. v calc

SS. lk-m gy. cl. trnsi. oc
clusters. vrf gr. ang-sb r
calc. tr vis por. dark bm
occ pyr. SLTYSH. m-dk
bioturb in part. tr pyr. sl c
blu cut. lk yel bm stn

MD 8887'
INC 88.9°
AZM 359.0°
TVD 7354.7'

MD 8919'
INC 89.0°
AZM 359.0°
TVD 7355.3'

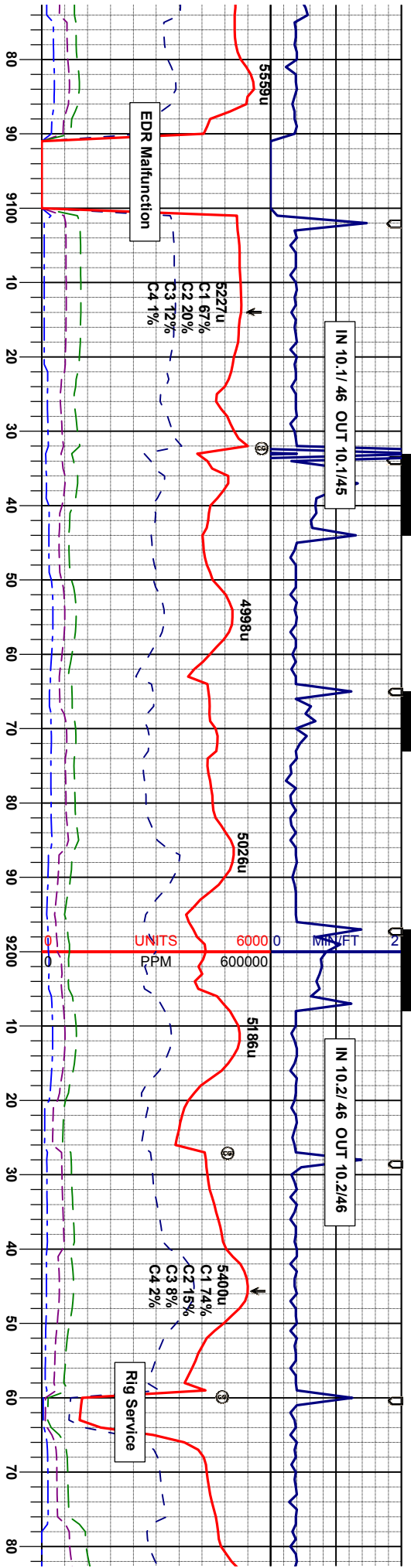
MD 8951'
INC 88.1°
AZM 359.1°
TVD 7356.1'

MD 8982'
INC 87.8°
AZM 358.6°
TVD 7357.1'

MD 9014'
INC 88.1°
AZM 358.6°
TVD 7358.3'

MD 9046'
INC 88.4°
AZM 358.4°
TVD 7359.3'





131api

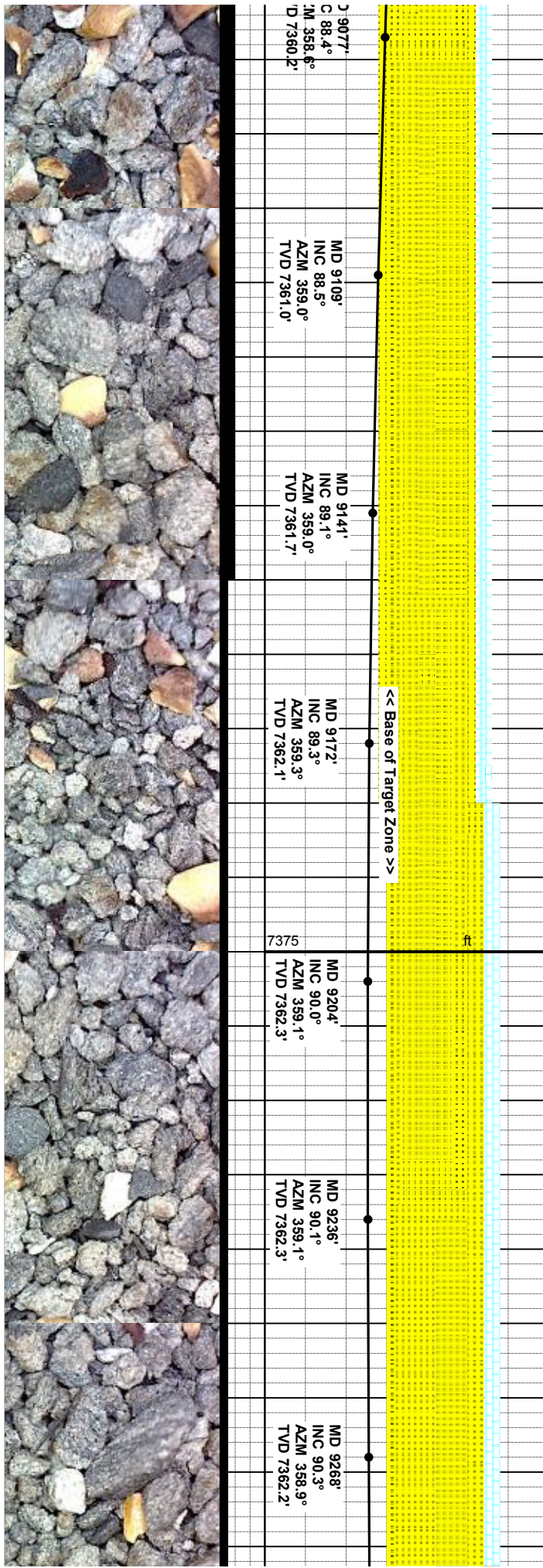
102api

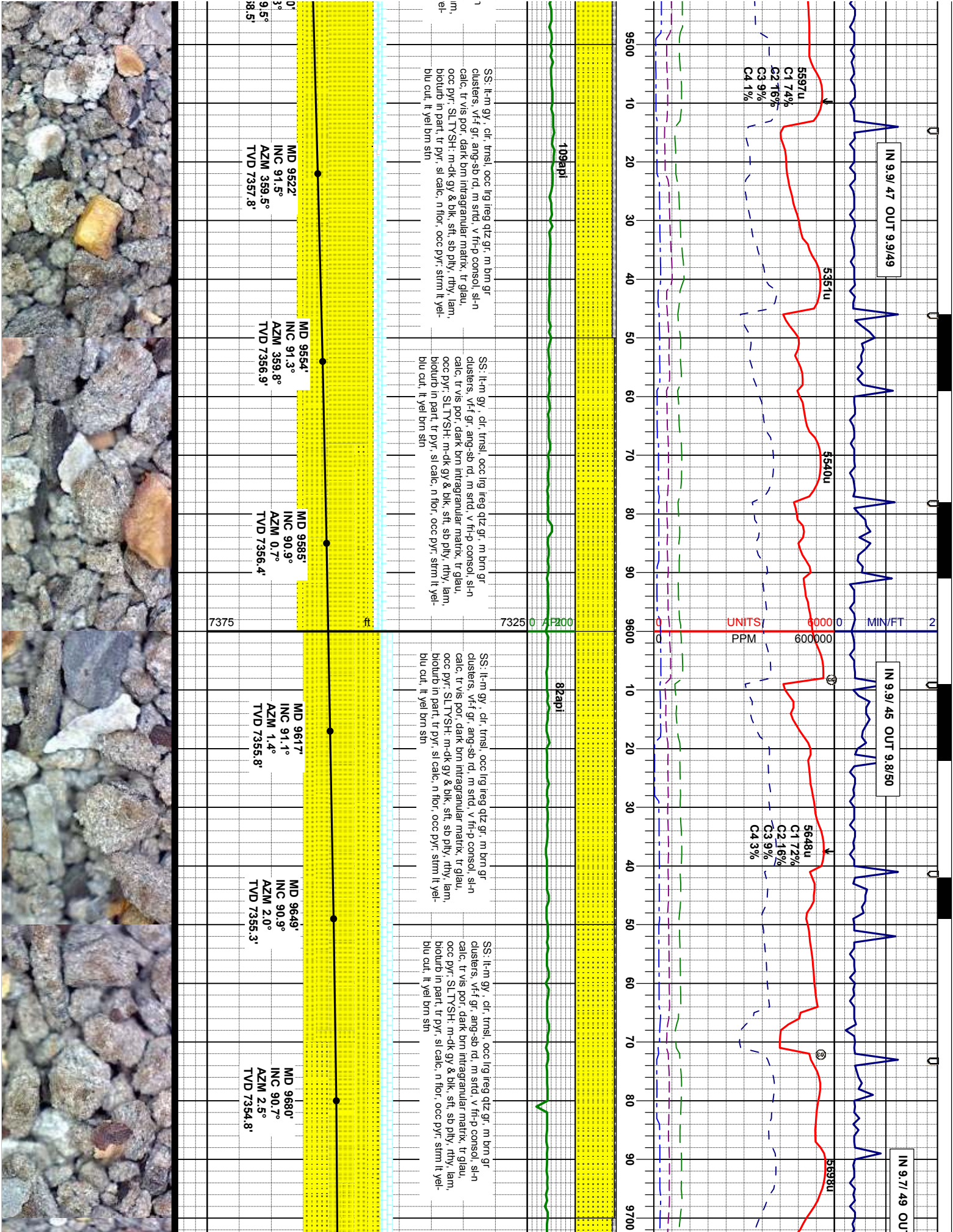
97api

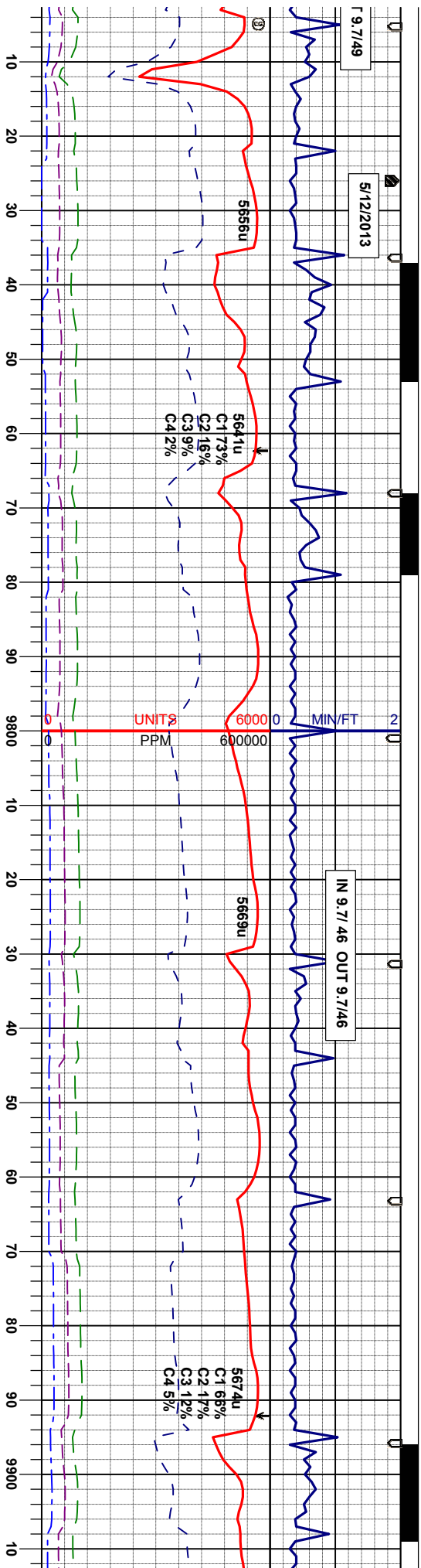
SS: m gy - m gybm, trans lp, occ lig ireg qtz gr, m brn gr clusters, v-f gr, ang-sb rd, m strd, v fr-p consol, sh-n calc, tr vis por, dark brn intragranular matrix, tr glau, occ pyr, SLTYSH: m-dk gy & blk, sft, sb pily, rthy, lam, bioturb in part, tr pyr, sl calc, n flor, oc lge pyr, stim lt, yel-blu cut, lt yel brn sin

SS: m gy - m gybm, trans lp, occ lig ireg qtz gr, m brn gr clusters, v-f gr, ang-sb rd, m strd, v fr-p consol, sh-n calc, tr vis por, dark brn intragranular matrix, tr glau, occ pyr, SLTYSH: m-dk gy & blk, sft, sb pily, rthy, lam, bioturb in part, tr pyr, sl calc, n flor, oc lge pyr, stim lt, yel-blu cut, lt yel brn sin

SS: m gy - m gybm, trans lp, occ lig ireg qtz gr, m brn gr clusters, v-f gr, ang-sb rd, m strd, v fr-p consol, sh-n calc, tr vis por, dark brn intragranular matrix, tr glau, occ pyr, SLTYSH: m-dk gy & blk, sft, sb pily, rthy, lam, bioturb in part, tr pyr, sl calc, n flor, oc lge pyr, stim lt, yel-blu cut, lt yel brn sin







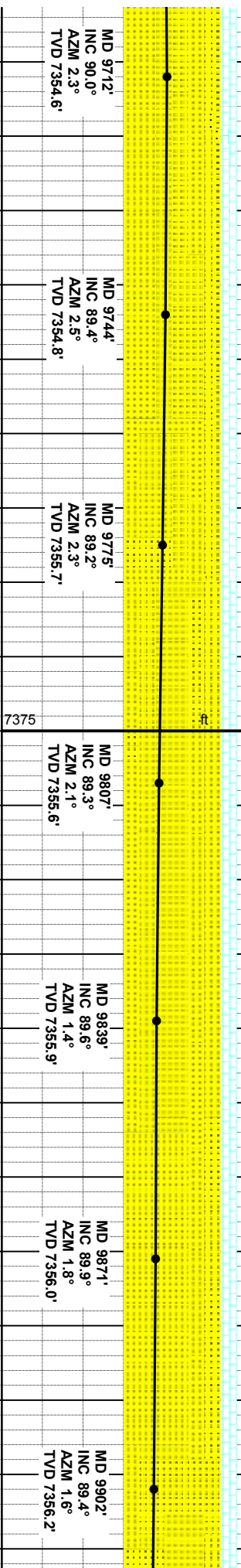
SS: lt-m gy, cl, trns, occ lrg irreg qtz gr, m bn gr clusters, v-f gr, ang-sb rd, m srd, v fr-p consol, sh-n calc, tr vis por, dark bn intragranular matrix, tr glau, occ pyr, SLTYSH: m-dk gy & blk, sft, sb pily, rthy, lam, bioturb in part, tr pyr, si calc, n flor, occ pyr, stim lt yel-blu cut, lt yel bn sin

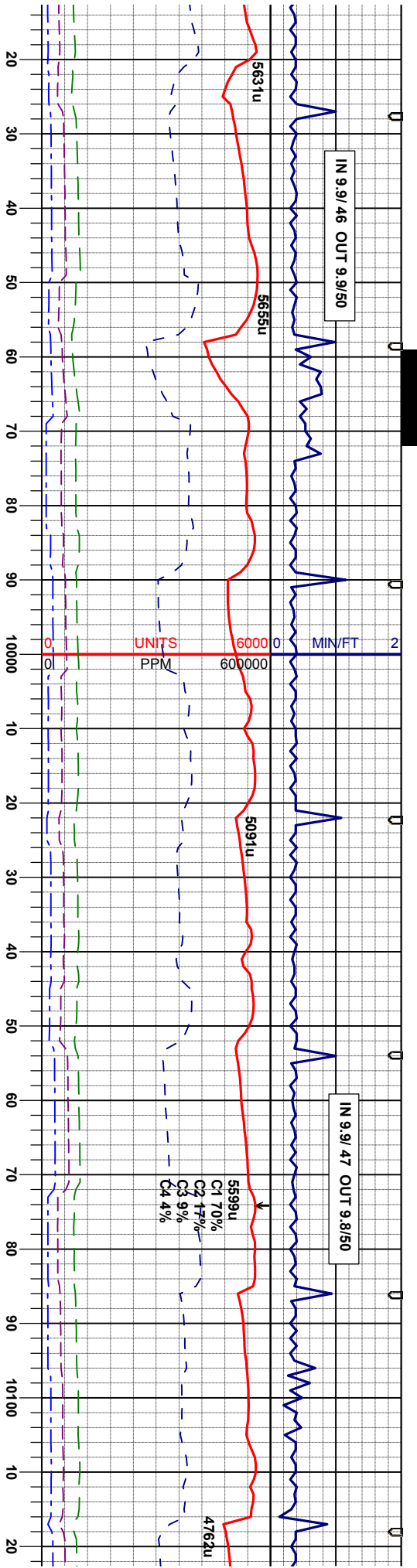
SS: lt-m gy, cl, trns, occ lrg irreg qtz gr, m bn gr clusters, v-f gr, ang-sb rd, m srd, v fr-p consol, sh-n calc, tr vis por, dark bn intragranular matrix, tr glau, occ pyr, SLTYSH: m-dk gy & blk, sft, sb pily, rthy, lam, bioturb in part, tr pyr, si calc, n flor, occ pyr, stim lt yel-blu cut, lt yel bn sin

SS: lt-m gy, cl, trns, occ lrg irreg qtz gr, m bn gr clusters, v-f gr, ang-sb rd, m srd, v fr-p consol, sh-n calc, tr vis por, dark bn intragranular matrix, tr glau, occ pyr, SLTYSH: m-dk gy & blk, sft, sb pily, rthy, lam, bioturb in part, tr pyr, si calc, n flor, occ pyr, stim lt yel-blu cut, lt yel bn sin

SS: lt-m gy, cl, trns, occ lrg irreg qtz gr, m bn gr clusters, v-f gr, ang-sb rd, m srd, v fr-p consol, sh-n calc, tr vis por, dark bn intragranular matrix, tr glau, occ pyr, SLTYSH: m-dk gy & blk, sft, sb pily, rthy, lam, bioturb in part, tr pyr, si calc, n flor, occ pyr, stim lt yel-blu cut, lt yel bn sin

SS: lt-m gy, cl, trns, occ lrg irreg qtz gr, m bn gr clusters, v-f gr, ang-sb rd, m srd, v fr-p consol, sh-n calc, tr vis por, dark bn intragranular matrix, tr glau, occ pyr, SLTYSH: m-dk gy & blk, sft, sb pily, rthy, lam, bioturb in part, tr pyr, si calc, n flor, occ pyr, stim lt yel-blu cut, lt yel bn sin





99api

7325 0 AF200

Missing Data

103api

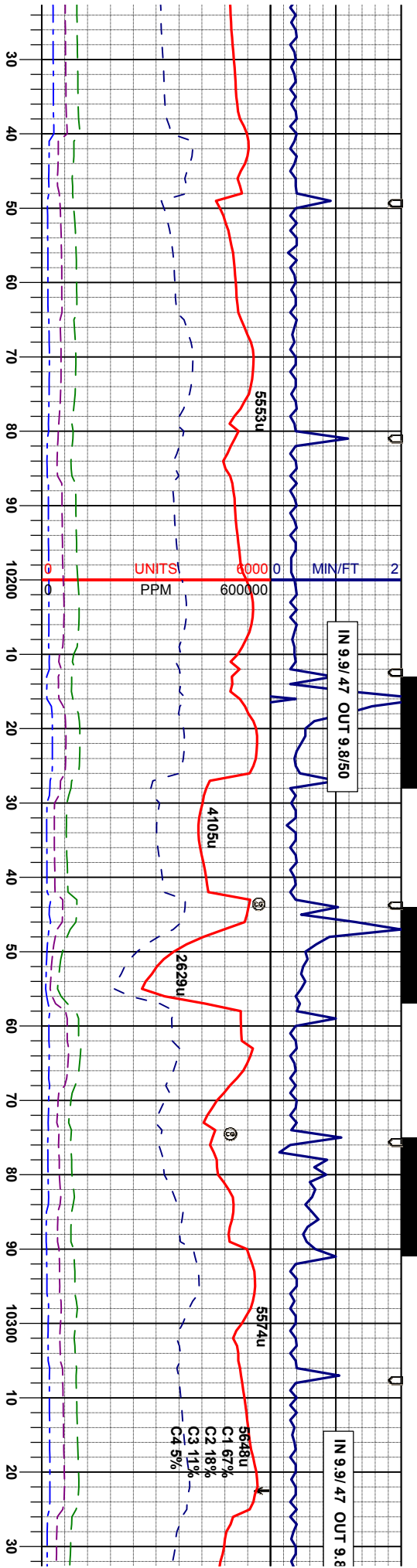
cl, tmsl, ooc lig iteg qtz gr, m brn gr
f gr, ang-sb rd, m srt, v fr-p consol, sl-n
or dark brn intragranular matrix, tr glau,
rtysh, m-dk gy & blk, srt, sb ply, rthy, lam,
int, tr pyr, sl calc, n flor, ooc pyr, stlm lt yel-
l brn sin

SS, lt brn & tmsl lt gy, & cl, qtz grs, v-f gr, ang-sb rd,
w srt, m consol, m fr, ooc glau, brn intran mtx, sl
calc, n vis por, ooc pyr intbd w SLTY SH; blk, stsb
biky, rthy-sb metallic lstr, ooc pyr, n calc, n flor, scat, t
gn SS flor, slow sting lt yel/blu cut lt yel stain

SS, lt brn & tmsl lt gy, & c
w srt, m consol, m fr, ooc glau, brn intran mtx, sl
calc, n vis por, ooc pyr intbd w SLTY SH; blk, stsb
biky, rthy-sb metallic lstr, ooc pyr, n calc, n flor, scat, t
gn SS flor, slow sting lt yel/blu cut lt yel stain

MD 9934'	INC 89.5°	AZM 0.9°	TVD 7356.5'
MD 9966'	INC 89.1°	AZM 1.4°	TVD 7356.9'
MD 9998'	INC 89.2°	AZM 1.2°	TVD 7357.3'
MD10029'	INC 89.5°	AZM 0.9°	TVD 7357.8'
MD10061'	INC 90°	AZM 0.9°	TVD 7357.9'
MD10093'	INC 90.1°	AZM 0.7°	TVD 7357.9'
MC	INC	AZ	TV





lt. qtz grns, v-f gr, ang-sb rd, glau, brn ingran mtx, sl
occ w/ SLTY SH: blk, stfsh
occ pyr, n clac, n flor, scat; tr
blu cut lt yel stain

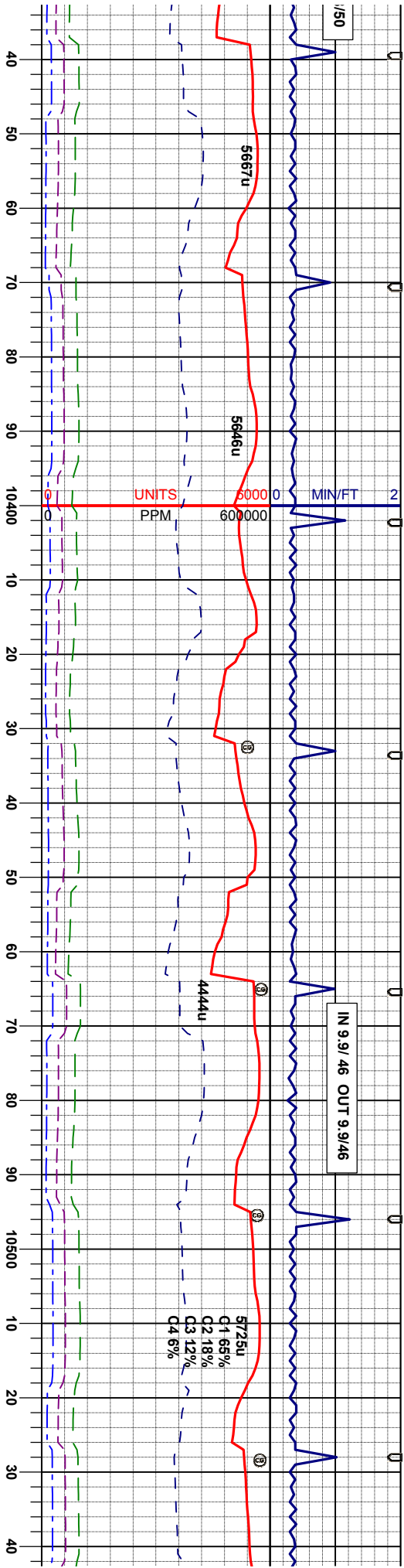
SS: lt brn & trns-lt gy, & cir, qtz grns, v-f gr, ang-sb rd,
w srt, m consol, m fr, occ glau, brn ingran mtx, sl
calc, n vis por, occ pyr intbd w/ SLTY SH: blk, stfsh
blk, rthy-sb metallic str, occ pyr, n clac, n flor, scat; tr
gn SS flor, slow sting lt yel/blu cut lt yel stain

SS: lt brn & trns-lt gy, & cir, qtz grns, v-f gr, ang-sb rd,
w srt, m consol, m fr, occ glau, brn ingran mtx, sl
calc, n vis por, occ pyr intbd w/ SLTY SH: blk, stfsh
blk, rthy-sb metallic str, occ pyr, n clac, n flor, scat; tr
gn SS flor, slow sting lt yel/blu cut lt yel stain

SS: lt brn & trns-lt gy, & cir, qtz grns, v-f gr, ang-sb rd,
w srt, m consol, m fr, occ glau, brn ingran mtx, sl
calc, n vis por, occ pyr intbd w/ SLTY SH: blk, stfsh
blk, rthy-sb metallic str, occ pyr, n clac, n flor, scat; tr
gn SS flor, slow sting lt yel/blu cut lt yel stain

10125'	MD10156'	MD10188'	MD10219'	MD10251'	MD10283'	MD10315'
INC 90.3°	INC 90.7°	INC 91.0°	INC 90.9°	INC 90.1°	INC 89.2°	INC 89.2°
M 0.4°	AZM 0.7°	AZM 0.7°	AZM 0.4°	AZM 0.4°	AZM 359.8°	AZM 359.5°
D 7357.7'	TVD 7357.5'	TVD 7357.0'	TVD 7356.5'	TVD 7356.2'	TVD 7356.4'	TVD 7356.8'





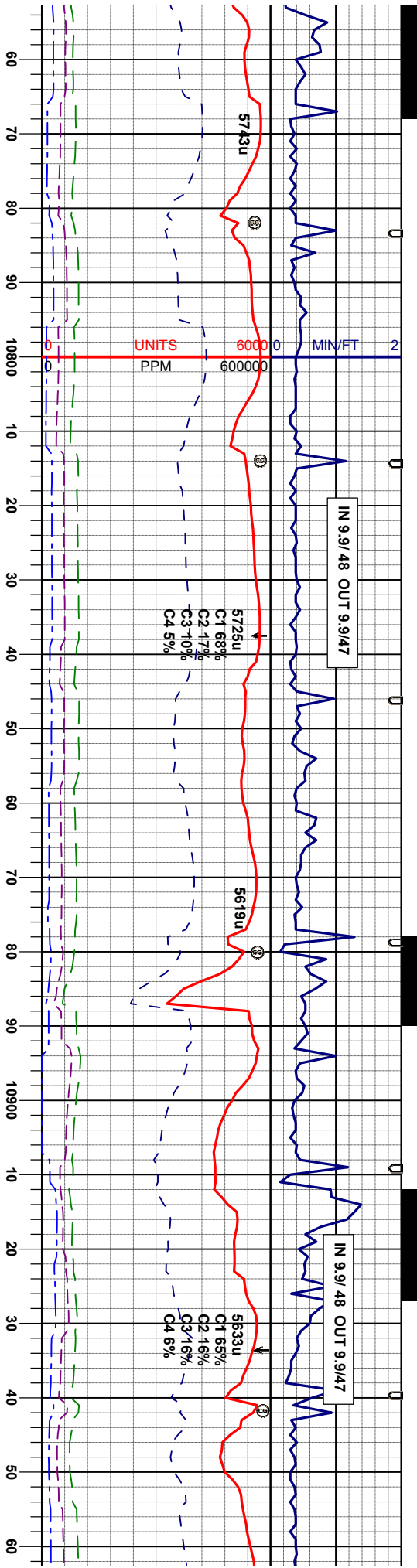
94api SS: lt brn & trns-lt gy, & cl, qtz grms, v-f gr, ang-sb rd, w srt, m consol, m fr, occ glau, brn ingran mnx, sl calc, n vis por, occ pyr intbd w/ SLTY SH: blk, sftsb blk, rthy-sb metallic lstr, occ pyr, n clac, n flor, scat: tr gn SS flor, slow string lt yeblu cut lt yel stain

98api SS: lt brn & trns-lt gy, & cl, qtz grms, v-f gr, ang-sb rd, w srt, m consol, m fr, occ glau, brn ingran mnx, sl calc, n vis por, occ pyr intbd w/ SLTY SH: blk, sftsb blk, rthy-sb metallic lstr, occ pyr, n clac, n flor, scat: tr gn SS flor, slow string lt yeblu cut lt yel stain

94api SS: lt brn & trns-lt gy, & cl, qtz grms, v-f gr, ang-sb rd, w srt, m consol, m fr, occ glau, brn ingran mnx, sl calc, n vis por, occ pyr intbd w/ SLTY SH: blk, sftsb blk, rthy-sb metallic lstr, occ pyr, n clac, n flor, scat: tr gn SS flor, slow string lt yeblu cut lt yel stain

MD10346' INC 89.4° AZM 359.3° TVD 7357.2'	MD10378' INC 89.5° AZM 359.3° TVD 7357.5'	MD10410' INC 89.9° AZM 359.3° TVD 7357.7'	MD10441' INC 90.1° AZM 359.8° TVD 7357.7'	MD10473' INC 90.3° AZM 359.8° TVD 7357.4'	MD10505' INC 90.6° AZM 359.7° TVD 7357.4'	MD10537' INC 90.9° AZM 359.8° TVD 7356.9'
--	--	--	--	--	--	--





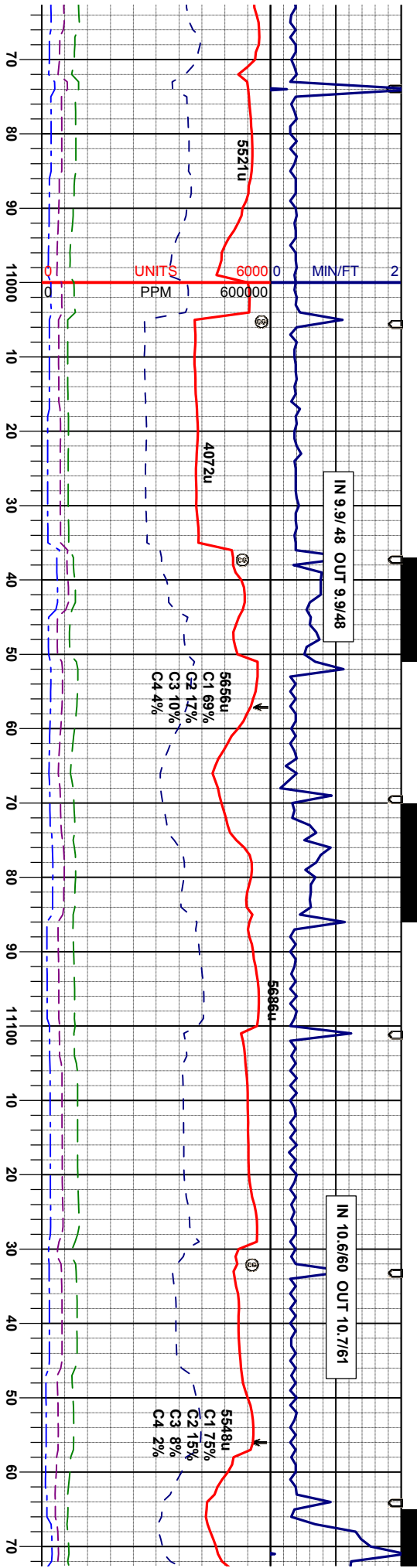
SS: lt brn & trns-lt gy, & cl, qtz grns, v-f gr, ang-sb rd, w srt, m consol, m fr, occ glau, brn ingran mtk, sl calc, n vis por, occ pyr imbd w/ SLTY SH; blk, sftsb blk, rthy-sb metallic lstr, occ pyr, n clac, n flor, scat; tr gn SS flor, slow string lt yelblu cut lt yel stain

SS: lt brn & trns-lt gy, & cl, qtz grns, v-f gr, ang-sb rd, w srt, m consol, m fr, occ glau, brn ingran mtk, sl calc, n vis por, occ pyr imbd w/ SLTY SH; blk, sftsb blk, rthy-sb metallic lstr, occ pyr, n clac, n flor, scat; tr gn SS flor, slow string lt yelblu cut lt yel stain

SS: lt brn & trns-lt gy, & cl, qtz grns, v-f gr, ang-sb rd, w srt, m consol, m fr, occ glau, brn ingran mtk, sl calc, n vis por, occ pyr imbd w/ SLTY SH; blk, sftsb blk, rthy-sb metallic lstr, occ pyr, n clac, n flor, scat; tr gn SS flor, slow string lt yelblu cut lt yel stain

MD 10759' INC 89.7° AZM 358.4° TVD 7356.0'	MD 10791' INC 89.7° AZM 358.4° TVD 7356.2'	MD 10823' INC 90.1° AZM 359.0° TVD 7356.2'	MD 10854' INC 90.5° AZM 359.0° TVD 7356.1'	MD 10886' INC 90.3° AZM 359.3° TVD 7355.8'	MD 10918' INC 90.2° AZM 359.7° TVD 7355.7'	MD 10950' INC 90.1° AZM 0.0° TVD 7355.6'
--	--	--	--	--	--	--





ms:lt gy & cir, qtz grns, v-f gr, ang-sb rd, r, occ glau, brn ingran mtx, sl r, occ pyr intbd w/ SLTY SH: blk, stfsh metallic istr, occ pyr, n clac, n flor, scat: tr

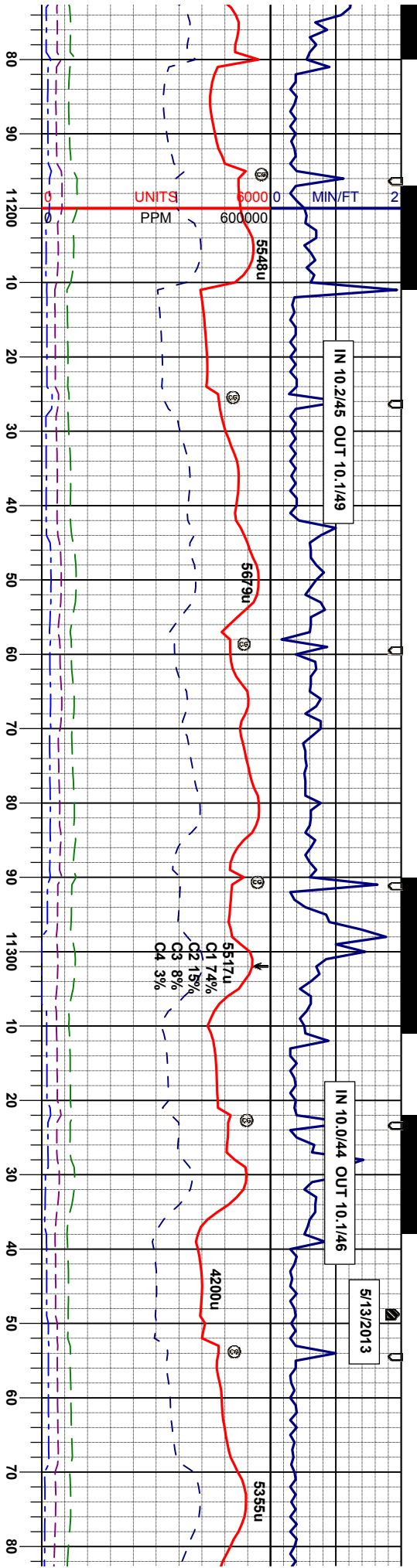
SS: lt brn & trns-lt gy, & cir, qtz grns, v-f gr, ang-sb rd, w srt, m consol, m fr, occ glau, brn ingran mtx, sl calc, n vis por, occ pyr intbd w/ SLTY SH: blk, stfsh blkly, rthy-sb metallic istr, occ pyr, n clac, n flor, scat: tr gn SS flor, slow stmg lt yellblu cut lt yel stain

SS: lt brn & trns-lt gy, & cir, qtz grns, v-f gr, ang-sb rd, w srt, m consol, m fr, occ glau, brn ingran mtx, sl calc, n vis por, occ pyr intbd w/ SLTY SH: blk, stfsh blkly, rthy-sb metallic istr, occ pyr, n clac, n flor, scat: tr gn SS flor, slow stmg lt yellblu cut lt yel stain

SS: lt brn & trns-lt gy, & cir, qtz grns, v-f gr, ang-sb rd, w srt, m consol, m fr, occ glau, brn ingran mtx, sl calc, n vis por, occ pyr intbd w/ SLTY SH: blk, stfsh blkly, rthy-sb metallic istr, occ pyr, n clac, n flor, scat: tr gn SS flor, slow stmg lt yellblu cut lt yel stain

MD 10981'	INC 90.2°	AZM 359.7°	TVD 7356.7'
MD 11013'	INC 90.7°	AZM 0.4°	TVD 7356.1'
MD 11045'	INC 90.4°	AZM 0.2°	TVD 7354.8'
MD 11077'	INC 89.9°	AZM 0.0°	TVD 7354.7'
MD 11108'	INC 89.9°	AZM 359.8°	TVD 7354.8'
MD 11140'	INC 90.0°	AZM 359.3°	TVD 7354.8'
MD 111	INC 89.	AZM 3	TVD 73





95api

SS: lt brn & trns-lt gy, & clr, qtz grns, v-f gr, ang-sb rd, w srt, m consol, m fit, occ glau, brn intgran mtk, sl calc, n vis por, occ pyr intbd w/ SLTY SH: blk, sfrsb blk, rthy-sb metallic lstr, occ pyr, n clac, n flor, scat: tr gn SS flor, slow sting lt yel/blu cut lt yel stain

98api

SS: lt brn & trns-lt gy, & clr, qtz grns, v-f gr, ang-sb rd, w srt, m consol, m fit, occ glau, brn intgran mtk, sl calc, n vis por, occ pyr intbd w/ SLTY SH: blk, sfrsb blk, rthy-sb metallic lstr, occ pyr, n clac, n flor, scat: tr gn SS flor, slow sting lt yel/blu cut lt yel stain

98api

SS: lt brn & trns-lt gy, & clr, qtz grns, v-f gr, ang-sb rd, w srt, m consol, m fit, occ glau, brn intgran mtk, sl calc, n vis por, occ pyr intbd w/ SLTY SH: blk, sfrsb blk, rthy-sb metallic lstr, occ pyr, n clac, n flor, scat: tr gn SS flor, slow sting lt yel/blu cut lt yel stain

7375	MD 11203' INC 89.3° AZM 359.1° TVD 7355.2'	MD 11235' INC 90.0° AZM 0.2° TVD 7355.4'	MD 11267' INC 90.0° AZM 359.8° TVD 7355.4'	MD 11299' INC 89.4° AZM 359.8° TVD 7355.6'	MD 11330' INC 89.0° AZM 359.5° TVD 7356.0'	MD 11362' INC 89.2° AZM 359.3° TVD 7356.5'
------	--	--	--	--	--	--



05:07 Hrs
2013
R CHOOSING
LOGGING

10 20 30

SLP to Bit
MD 11797'
INC 90.3°
AZM 357.2°
TVD 7356.9'