

Company ANADARKO PETROLEUM CORP  
 Well COMMONS 4-19  
 Field WATTENBERG  
 County WELD  
 State COLORADO

Location: API #: NNNW  
 SEC 19 TWP 1N RGE 68W  
 Permanent Datum GROUND LEVEL Elevation  
 Log Measured From KELLY BUSHING  
 Drilling Measured From KELLY BUSHING  
 Elevation K.B. 5056  
 D.F. 5055  
 G.L. 5041

Date 11-SEP-2018  
 Run Number TMO  
 Depth Driller 8468  
 Bottom Logger 1630  
 Bottom Logged Interval 900  
 Top Log Interval 1630  
 Casing Size 1 7/8  
 Pipe Size 1 7/8  
 Max Recorded Temp NOT RECORDED  
 Estimated Cement Top ROA

Time Lagger On Bottom 0000  
 Unit Number 200054  
 Tool Size / ID Number 1.70 RADIO  
 Location FORT LUTTON  
 Recorded By JIM MCKE  
 Witnessed By DAVID ALMARAZ

Run Number Bit From To Size Weight Tubing Record From To  
 Casing Record Size Weight Top Bottom  
 Surface String 8 5/8 24 SURFACE SURFACE 920'  
 Production String 4 1/2 11.6 SURFACE TOTAL DEPTH

<<< Fold Here >>>

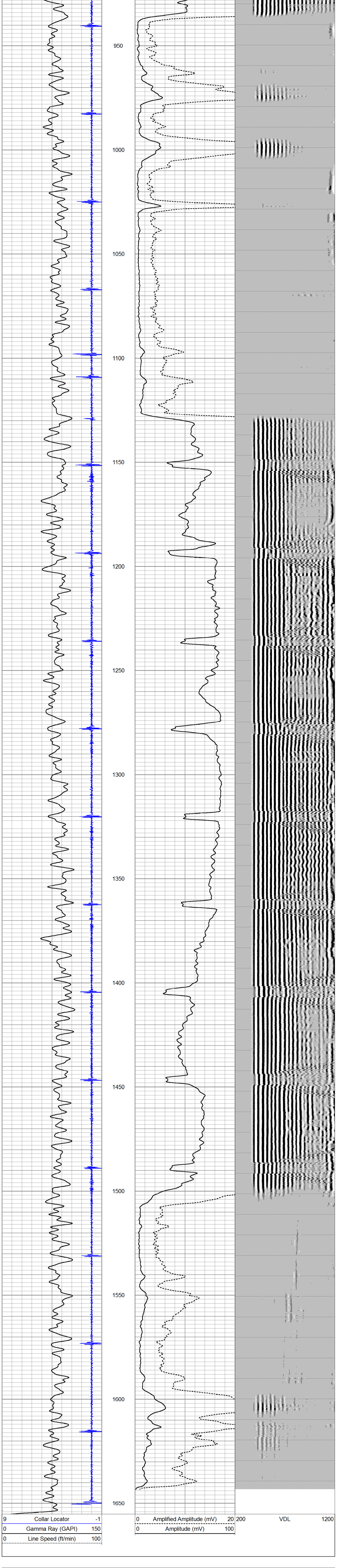
All interpretations are opinions based on inferences from electrical or other measurements and we cannot and do not guarantee the accuracy or correctness of any interpretation, and we shall not, except in the case of gross or willful negligence on our part, be liable or responsible for any loss, costs, damages, or expenses incurred or sustained by anyone resulting from any interpretation made by any of our officers, agents or employees. These interpretations are also subject to our general terms and conditions set out in our current Price Schedule.

Comments

CORRELATED TO CBL DATED 31-AUG-2018

Database File: commons 4-19.db  
 Dataset Pathname: pass48.1  
 Presentation Format: scbl\_dr  
 Dataset Creation: Tue Sep 11 08:17:16 2018 by Calc SCH 120430  
 Charted by: Depth in Feet scaled 1:240

|                       |     |                            |     |     |     |      |
|-----------------------|-----|----------------------------|-----|-----|-----|------|
| 9 Collar Locator      | -1  | 0 Amplified Amplitude (mV) | 20  | 200 | VDL | 1200 |
| 0 Gamma Ray (GAPI)    | 150 | 0 Amplitude (mV)           | 100 |     |     |      |
| 0 Line Speed (ft/min) | 100 |                            |     |     |     |      |



|                       |     |                            |     |     |     |      |
|-----------------------|-----|----------------------------|-----|-----|-----|------|
| 9 Collar Locator      | -1  | 0 Amplified Amplitude (mV) | 20  | 200 | VDL | 1200 |
| 0 Gamma Ray (GAPI)    | 150 | 0 Amplitude (mV)           | 100 |     |     |      |
| 0 Line Speed (ft/min) | 100 |                            |     |     |     |      |

Calibration Report

Database File: commons 4-19.db  
 Dataset Pathname: pass48.1  
 Dataset Creation: Tue Sep 11 08:17:16 2018 by Calc SCH 120430

Gamma Ray Calibration Report

Serial Number: FW1806-050  
 Tool Model: GCT  
 Performed: Sun Jun 13 13:33:21 1993  
 Calibrator Value: 1.0 GAPI  
 Background Reading: 0.0 cps  
 Calibrator Reading: 1.0 GAPI  
 Sensitivity: 1.0000 GAPI/cps

Temperature Calibration Report

Serial Number: FW1806-050  
 Tool Model: GCT  
 Performed: Fri Aug 24 13:22:34 2018  

| Reference                   | Reading      |
|-----------------------------|--------------|
| Low Reference: 100.00 degF  | 6176.05degF  |
| High Reference: 350.00 degF | 26317.70degF |

 Gain: 0.01  
 Offset: 23.34  
 Delta Spacing: 1

Segmented Cement Bond Log Calibration Report

Serial Number: FW1804-090  
 Tool Model: 1.70  
 Calibration Casing Diameter: 4.500 in  
 Calibration Depth: 93.408 ft

Master Calibration, performed Tue Sep 11 07:53:50 2018:

|     | Raw (v) |       | Calibrated (mv) |        | Results |        |
|-----|---------|-------|-----------------|--------|---------|--------|
|     | Zero    | Cal   | Zero            | Cal    | Gain    | Offset |
| 3'  | 0.000   | 0.900 | 1.000           | 81.196 | 89.107  | 1.000  |
| CAL | 0.000   | 0.982 |                 |        |         |        |
| 5'  | 0.000   | 0.799 | 1.000           | 81.196 | 100.397 | 1.000  |
| SUM |         |       |                 |        |         |        |
| S1  | 0.000   | 0.820 | 0.000           | 81.196 | 99.005  | 0.000  |
| S2  | 0.000   | 0.846 | 0.000           | 81.196 | 96.014  | 0.000  |
| S3  | 0.000   | 0.826 | 0.000           | 81.196 | 98.291  | 0.000  |
| S4  | 0.000   | 0.795 | 0.000           | 81.196 | 102.192 | 0.000  |
| S5  | 0.000   | 0.774 | 0.000           | 81.196 | 104.881 | 0.000  |
| S6  | 0.000   | 0.787 | 0.000           | 81.196 | 103.218 | 0.000  |
| S7  | 0.000   | 0.790 | 0.000           | 81.196 | 102.743 | 0.000  |
| S8  | 0.000   | 0.791 | 0.000           | 81.196 | 102.703 | 0.000  |

Internal Reference Calibration, performed Wed Dec 31 17:00:00 1969:

|     | Raw (v) |       | Calibrated (v) |       | Results |        |
|-----|---------|-------|----------------|-------|---------|--------|
|     | Zero    | Cal   | Zero           | Cal   | Gain    | Offset |
| CAL | 0.000   | 0.000 | 0.000          | 0.982 | 1.000   | 0.000  |

Air Zero Calibration, performed Wed Dec 31 17:00:00 1969:

|     | Raw (v) |     | Calibrated (v) |     | Results |        |
|-----|---------|-----|----------------|-----|---------|--------|
|     | Zero    | Cal | Zero           | Cal | Gain    | Offset |
| 3'  | 0.000   |     | 0.000          |     |         | 0.000  |
| 5'  | 0.000   |     | 0.000          |     |         | 0.000  |
| SUM |         |     |                |     |         |        |
| S1  | 0.000   |     | 0.000          |     |         | 0.000  |
| S2  | 0.000   |     | 0.000          |     |         | 0.000  |
| S3  | 0.000   |     | 0.000          |     |         | 0.000  |
| S4  | 0.000   |     | 0.000          |     |         | 0.000  |
| S5  | 0.000   |     | 0.000          |     |         | 0.000  |
| S6  | 0.000   |     | 0.000          |     |         | 0.000  |
| S7  | 0.000   |     | 0.000          |     |         | 0.000  |
| S8  | 0.000   |     | 0.000          |     |         | 0.000  |