

PETROLEUM DEVELOPMENT CORP Weld County CO

Well Name: **Guttersen 6R-403**

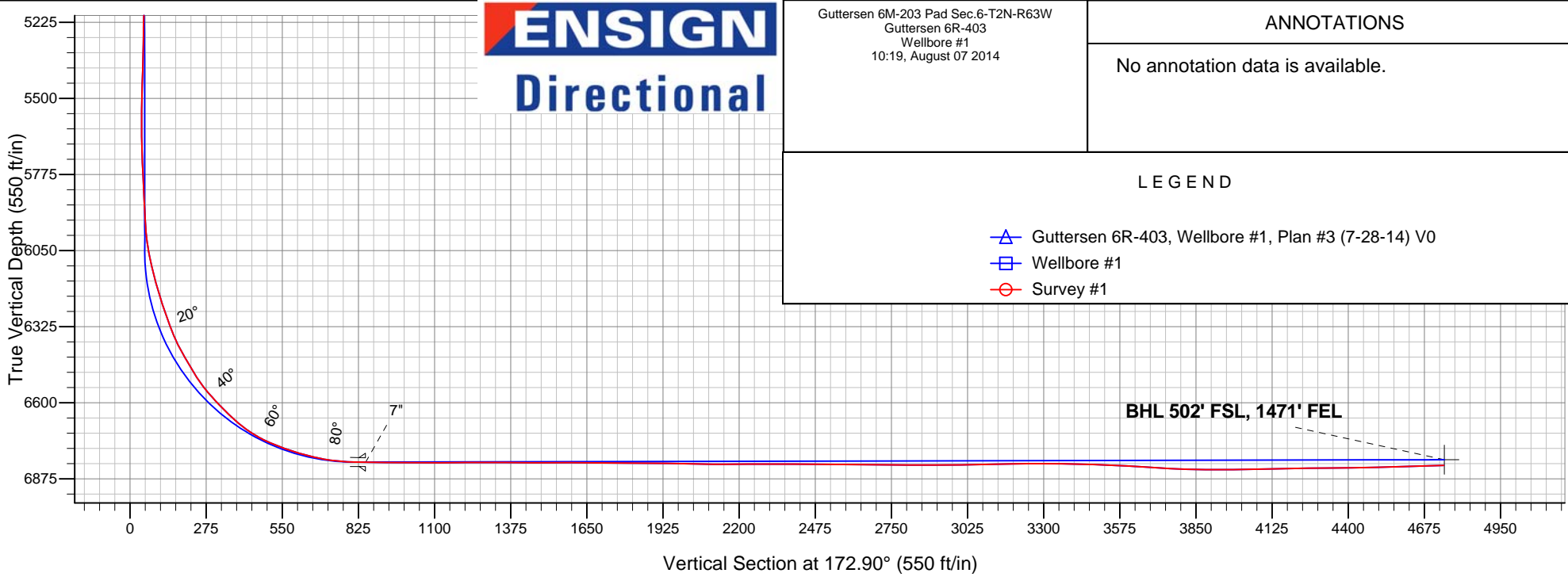
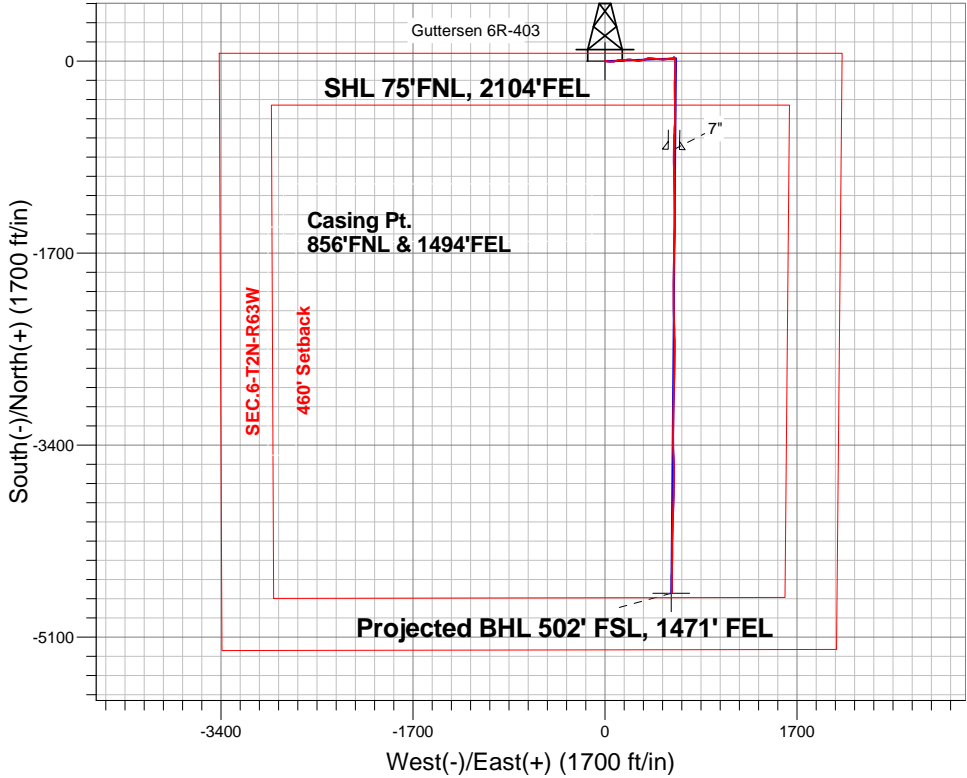
Surface Location: Guttersen 6M-203 Pad Sec.6-T2N-R63W  
North American Datum 1983 , US State Plane 1983 , Colorado Northern Zone

Ground Elevation: 4823.0

+N/-S	+E/-W	Northing	Easting	Latitude	Longitude	Slot
0.0	0.0	1308042.91	3285452.46	40.174460	-104.478450	
Ensign Rig #136 - RKB - 12.5' WELL @ 4835.5ft (Ensign Rig #136 - RKB - 12.5')						

FINAL SURVEY

Projected Bottom Hole Location  
11233'MD 6826'TVD 4709'S & 491'E of SHL  
91.9 degree Incl @ 179.8 degree AZM





# **PETROLEUM DEVELOPMENT CORP Weld County CO**

**SEC.6-T2N-R63W**

**Guttersen 6M-203 Pad Sec.6-T2N-R63W**

**Guttersen 6R-403**

**Wellbore #1**

**Survey: Survey #1**

## **Standard Survey Report**

**07 August, 2014**

<b>Company:</b>	PETROLEUM DEVELOPMENT CORP Weld County CO	<b>Local Co-ordinate Reference:</b>	Well Gutteresen 6R-403
<b>Project:</b>	SEC.6-T2N-R63W	<b>TVD Reference:</b>	WELL @ 4848.5ft (Ensign Rig #136 - RKB - 12.5')
<b>Site:</b>	Gutteresen 6M-203 Pad Sec.6-T2N-R63W	<b>MD Reference:</b>	WELL @ 4848.5ft (Ensign Rig #136 - RKB - 12.5')
<b>Well:</b>	Gutteresen 6R-403	<b>North Reference:</b>	True
<b>Wellbore:</b>	Wellbore #1	<b>Survey Calculation Method:</b>	Minimum Curvature
<b>Design:</b>	Wellbore #1	<b>Database:</b>	Landmark

<b>Project</b>	SEC.6-T2N-R63W, Weld County, Colorado		
<b>Map System:</b>	US State Plane 1983	<b>System Datum:</b>	Mean Sea Level
<b>Geo Datum:</b>	North American Datum 1983		Using Well Reference Point
<b>Map Zone:</b>	Colorado Northern Zone		Using geodetic scale factor

Site		Guttersen 6M-203 Pad Sec.6-T2N-R63W			
Site Position:		Northing:	1,308,041.91 ft	Latitude:	40.174460
From:	Lat/Long	Easting:	3,285,363.04 ft	Longitude:	-104.478770
Position Uncertainty:	0.0 ft	Slot Radius:	"	Grid Convergence:	0.66 °

Well	Gutteresen 6R-403					
Well Position	+N-S	0.0 ft	Northing:	1,308,042.91 ft	Latitude:	40.174460
	+E-W	0.0 ft	Easting:	3,285,452.46 ft	Longitude:	-104.478450
Position Uncertainty		0.0 ft	Wellhead Elevation:	ft	Ground Level:	4,836.0 ft

<b>Wellbore</b>	Wellbore #1				
<b>Magnetics</b>	<b>Model Name</b>	<b>Sample Date</b>	<b>Declination (°)</b>	<b>Dip Angle (°)</b>	<b>Field Strength (nT)</b>
	IGRF2010	7/28/2014	8.27	66.81	52,714

Design	Wellbore #1			
Audit Notes:				
Version:	1.0	Phase:	ACTUAL	Tie On Depth: 0.0
Vertical Section:	Depth From (TVD) (ft)	+N/-S (ft)	+E/-W (ft)	Direction (°)
	0.0	0.0	0.0	172.90

<b>Survey Program</b>	<b>Date</b>	8/7/2014			
<b>From (ft)</b>	<b>To (ft)</b>	<b>Survey (Wellbore)</b>	<b>Tool Name</b>	<b>Description</b>	
68.0	11,233.0	Survey #1 (Wellbore #1)	MWD	MWD - Standard	

<b>Survey</b>										
<b>Measured Depth (ft)</b>	<b>Inclination (°)</b>	<b>Azimuth (°)</b>	<b>Vertical Depth (ft)</b>	<b>+N/-S (ft)</b>	<b>+E/-W (ft)</b>	<b>Vertical Section (ft)</b>	<b>Dogleg Rate (°/100ft)</b>	<b>Build Rate (°/100ft)</b>	<b>Turn Rate (°/100ft)</b>	
0.0	0.00	0.00	0.0	0.0	0.0	0.0	0.00	0.00	0.00	
1.0	0.02	60.80	1.0	0.0	0.0	0.0	1.62	1.62	0.00	
<b>SHL 75'FNL, 2104'FEL</b>										
68.0	1.10	60.80	68.0	0.3	0.6	-0.2	1.62	1.62	0.00	
158.0	1.10	68.90	158.0	1.1	2.1	-0.8	0.17	0.00	9.00	
252.0	1.10	76.60	252.0	1.6	3.8	-1.1	0.16	0.00	8.19	
343.0	1.80	105.50	342.9	1.4	6.1	-0.6	1.09	0.77	31.76	
433.0	3.20	107.80	432.8	0.3	9.8	1.0	1.56	1.56	2.56	
525.0	4.10	97.20	524.7	-0.9	15.5	2.9	1.22	0.98	-11.52	
615.0	6.10	97.90	614.3	-2.0	23.5	4.9	2.22	2.22	0.78	

<b>Company:</b>	PETROLEUM DEVELOPMENT CORP Weld County CO	<b>Local Co-ordinate Reference:</b>	Well Gutteresen 6R-403
<b>Project:</b>	SEC.6-T2N-R63W	<b>TVD Reference:</b>	WELL @ 4848.5ft (Ensign Rig #136 - RKB - 12.5')
<b>Site:</b>	Gutteresen 6M-203 Pad Sec.6-T2N-R63W	<b>MD Reference:</b>	WELL @ 4848.5ft (Ensign Rig #136 - RKB - 12.5')
<b>Well:</b>	Gutteresen 6R-403	<b>North Reference:</b>	True
<b>Wellbore:</b>	Wellbore #1	<b>Survey Calculation Method:</b>	Minimum Curvature
<b>Design:</b>	Wellbore #1	<b>Database:</b>	Landmark

Survey									
Measured Depth (ft)	Inclination (°)	Azimuth (°)	Vertical Depth (ft)	+N/-S (ft)	+E/-W (ft)	Vertical Section (ft)	Dogleg Rate (°/100ft)	Build Rate (°/100ft)	Turn Rate (°/100ft)
706.0	7.70	97.40	704.6	-3.4	34.3	7.7	1.76	1.76	-0.55
797.0	8.80	89.70	794.7	-4.2	47.3	10.0	1.71	1.21	-8.46
843.0	8.80	84.90	840.2	-3.9	54.3	10.6	1.60	0.00	-10.43
927.0	9.20	83.70	923.1	-2.6	67.4	10.9	0.53	0.48	-1.43
1,023.0	9.60	83.20	1,017.8	-0.8	83.0	11.0	0.43	0.42	-0.52
1,114.0	7.70	72.40	1,107.8	2.0	96.3	10.0	2.74	-2.09	-11.87
1,205.0	7.80	71.70	1,198.0	5.8	108.0	7.6	0.15	0.11	-0.77
1,296.0	7.20	84.70	1,288.2	8.2	119.5	6.6	1.97	-0.66	14.29
1,387.0	7.50	90.40	1,378.4	8.7	131.2	7.6	0.87	0.33	6.26
1,477.0	7.30	91.40	1,467.7	8.5	142.8	9.2	0.26	-0.22	1.11
1,568.0	7.00	91.90	1,558.0	8.2	154.1	10.9	0.34	-0.33	0.55
1,659.0	7.00	92.60	1,648.3	7.8	165.2	12.7	0.09	0.00	0.77
1,750.0	8.40	77.70	1,738.5	8.9	177.2	13.0	2.67	1.54	-16.37
1,841.0	7.70	77.90	1,828.6	11.6	189.6	11.9	0.77	-0.77	0.22
1,932.0	6.20	82.60	1,918.9	13.5	200.5	11.4	1.76	-1.65	5.16
2,022.0	6.00	81.70	2,008.4	14.8	210.0	11.2	0.25	-0.22	-1.00
2,113.0	5.30	104.20	2,099.0	14.5	218.7	12.7	2.53	-0.77	24.73
2,205.0	4.60	97.20	2,190.6	13.0	226.5	15.1	1.00	-0.76	-7.61
2,301.0	5.50	101.60	2,286.3	11.6	234.8	17.5	1.02	0.94	4.58
2,396.0	6.80	100.40	2,380.7	9.7	244.8	20.7	1.38	1.37	-1.26
2,491.0	6.30	92.80	2,475.1	8.4	255.6	23.3	1.05	-0.53	-8.00
2,586.0	7.10	93.20	2,569.5	7.8	266.6	25.2	0.84	0.84	0.42
2,681.0	8.40	100.00	2,663.6	6.3	279.3	28.3	1.67	1.37	7.16
2,777.0	7.60	95.60	2,758.7	4.4	292.6	31.8	1.05	-0.83	-4.58
2,872.0	8.70	85.30	2,852.7	4.4	306.0	33.5	1.92	1.16	-10.84
2,967.0	8.10	76.60	2,946.7	6.5	319.6	33.0	1.48	-0.63	-9.16
3,062.0	7.80	72.10	3,040.8	10.1	332.3	31.1	0.73	-0.32	-4.74
3,157.0	8.60	81.40	3,134.8	13.1	345.5	29.7	1.63	0.84	9.79
3,252.0	8.90	70.30	3,228.7	16.7	359.4	27.9	1.80	0.32	-11.68
3,347.0	8.50	64.50	3,322.6	22.2	372.7	24.1	1.01	-0.42	-6.11
3,442.0	7.70	84.70	3,416.7	25.8	385.3	22.1	3.09	-0.84	21.26
3,537.0	7.70	98.40	3,510.8	25.4	398.0	24.0	1.93	0.00	14.42
3,632.0	7.30	93.00	3,605.0	24.2	410.3	26.7	0.85	-0.42	-5.68
3,727.0	6.90	88.10	3,699.3	24.1	422.0	28.3	0.76	-0.42	-5.16
3,822.0	8.10	100.20	3,793.5	23.1	434.3	30.8	2.08	1.26	12.74
3,917.0	8.20	98.80	3,887.5	20.8	447.6	34.7	0.23	0.11	-1.47
4,012.0	7.80	96.00	3,981.6	19.1	460.7	38.0	0.59	-0.42	-2.95
4,107.0	7.50	94.90	4,075.8	17.9	473.3	40.7	0.35	-0.32	-1.16
4,202.0	7.00	94.20	4,170.0	17.0	485.2	43.2	0.53	-0.53	-0.74
4,297.0	6.80	92.50	4,264.3	16.3	496.6	45.2	0.30	-0.21	-1.79
4,392.0	6.80	90.00	4,358.6	16.1	507.9	46.9	0.31	0.00	-2.63
4,487.0	7.50	88.60	4,452.9	16.2	519.7	48.2	0.76	0.74	-1.47
4,583.0	6.90	86.70	4,548.1	16.7	531.7	49.2	0.67	-0.63	-1.98
4,678.0	6.30	81.40	4,642.5	17.8	542.6	49.4	0.90	-0.63	-5.58
4,773.0	5.90	79.30	4,737.0	19.5	552.5	49.0	0.48	-0.42	-2.21
4,868.0	6.10	84.60	4,831.5	20.9	562.3	48.8	0.62	0.21	5.58
4,963.0	7.70	87.00	4,925.8	21.7	573.7	49.4	1.71	1.68	2.53
5,059.0	7.50	84.70	5,020.9	22.6	586.4	50.1	0.38	-0.21	-2.40
5,154.0	6.90	81.60	5,115.2	24.0	598.2	50.2	0.75	-0.63	-3.26
5,249.0	4.60	74.70	5,209.7	25.8	607.5	49.5	2.52	-2.42	-7.26
5,344.0	2.40	65.00	5,304.5	27.7	613.0	48.3	2.39	-2.32	-10.21

<b>Company:</b>	PETROLEUM DEVELOPMENT CORP Weld County CO	<b>Local Co-ordinate Reference:</b>	Well Gutteresen 6R-403
<b>Project:</b>	SEC.6-T2N-R63W	<b>TVD Reference:</b>	WELL @ 4848.5ft (Ensign Rig #136 - RKB - 12.5')
<b>Site:</b>	Gutteresen 6M-203 Pad Sec.6-T2N-R63W	<b>MD Reference:</b>	WELL @ 4848.5ft (Ensign Rig #136 - RKB - 12.5')
<b>Well:</b>	Gutteresen 6R-403	<b>North Reference:</b>	True
<b>Wellbore:</b>	Wellbore #1	<b>Survey Calculation Method:</b>	Minimum Curvature
<b>Design:</b>	Wellbore #1	<b>Database:</b>	Landmark

Survey									
Measured Depth (ft)	Inclination (°)	Azimuth (°)	Vertical Depth (ft)	+N/-S (ft)	+E/-W (ft)	Vertical Section (ft)	Dogleg Rate (°/100ft)	Build Rate (°/100ft)	Turn Rate (°/100ft)
5,439.0	1.90	347.00	5,399.5	30.1	614.4	46.1	2.88	-0.53	-82.11
5,534.0	2.30	313.80	5,494.4	32.9	612.7	43.1	1.33	0.42	-34.95
5,629.0	0.50	208.70	5,589.4	33.9	611.1	42.0	2.61	-1.89	-110.63
5,725.0	1.70	191.40	5,685.4	32.1	610.7	43.6	1.28	1.25	-18.02
5,820.0	2.60	157.20	5,780.3	28.7	611.2	47.1	1.61	0.95	-36.00
5,915.0	3.30	146.40	5,875.2	24.5	613.6	51.6	0.94	0.74	-11.37
5,947.0	3.10	148.20	5,907.1	23.0	614.5	53.2	0.70	-0.63	5.63
5,979.0	3.20	147.10	5,939.1	21.5	615.5	54.8	0.37	0.31	-3.44
6,010.0	4.80	151.70	5,970.0	19.6	616.6	56.8	5.26	5.16	14.84
6,042.0	6.80	158.70	6,001.8	16.7	617.9	59.9	6.62	6.25	21.88
6,074.0	8.90	166.60	6,033.5	12.5	619.1	64.2	7.36	6.56	24.69
6,106.0	10.70	171.70	6,065.1	7.2	620.1	69.6	6.24	5.63	15.94
6,137.0	12.50	174.40	6,095.4	1.0	620.9	75.8	6.06	5.81	8.71
6,169.0	14.20	176.10	6,126.6	-6.4	621.5	83.2	5.45	5.31	5.31
6,202.0	15.20	177.40	6,158.5	-14.8	622.0	91.5	3.19	3.03	3.94
6,233.0	16.00	178.60	6,188.3	-23.1	622.3	99.9	2.78	2.58	3.87
6,264.0	17.20	180.00	6,218.0	-31.9	622.4	108.7	4.08	3.87	4.52
6,296.0	18.60	180.70	6,248.5	-41.8	622.3	118.4	4.43	4.38	2.19
6,328.0	19.60	179.10	6,278.7	-52.2	622.3	128.8	3.53	3.13	-5.00
6,360.0	20.20	180.50	6,308.8	-63.1	622.4	139.6	2.39	1.88	4.38
6,391.0	21.60	182.30	6,337.8	-74.2	622.1	150.5	4.97	4.52	5.81
6,423.0	23.80	182.80	6,367.3	-86.5	621.5	162.7	6.90	6.88	1.56
6,455.0	27.50	181.40	6,396.1	-100.4	621.0	176.4	11.72	11.56	-4.38
6,487.0	29.80	181.90	6,424.2	-115.7	620.6	191.6	7.23	7.19	1.56
6,518.0	30.20	183.20	6,451.1	-131.2	619.9	206.8	2.46	1.29	4.19
6,550.0	31.40	184.10	6,478.6	-147.5	618.8	222.9	4.02	3.75	2.81
6,582.0	32.80	183.30	6,505.7	-164.5	617.8	239.6	4.57	4.38	-2.50
6,614.0	36.50	181.10	6,532.0	-182.7	617.1	257.6	12.20	11.56	-6.88
6,645.0	39.90	180.20	6,556.3	-201.8	616.9	276.6	11.11	10.97	-2.90
6,677.0	42.10	179.80	6,580.5	-222.8	616.9	297.4	6.92	6.88	-1.25
6,709.0	43.60	179.50	6,603.9	-244.6	617.0	319.0	4.73	4.69	-0.94
6,740.0	45.00	179.00	6,626.1	-266.2	617.3	340.5	4.65	4.52	-1.61
6,772.0	47.10	178.60	6,648.3	-289.3	617.8	363.4	6.62	6.56	-1.25
6,804.0	49.60	178.40	6,669.6	-313.2	618.4	387.2	7.83	7.81	-0.63
6,836.0	52.50	178.30	6,689.7	-338.1	619.1	412.0	9.07	9.06	-0.31
6,867.0	56.80	178.30	6,707.7	-363.3	619.9	437.2	13.87	13.87	0.00
6,899.0	61.30	179.50	6,724.1	-390.8	620.4	464.5	14.43	14.06	3.75
6,931.0	65.30	180.40	6,738.5	-419.3	620.4	492.8	12.75	12.50	2.81
6,963.0	67.80	180.50	6,751.2	-448.7	620.2	521.9	7.82	7.81	0.31
6,994.0	69.70	181.10	6,762.5	-477.6	619.8	550.5	6.39	6.13	1.94
7,026.0	72.20	181.10	6,772.9	-507.8	619.2	580.5	7.81	7.81	0.00
7,058.0	74.20	181.80	6,782.1	-538.4	618.4	610.8	6.59	6.25	2.19
7,090.0	75.60	182.30	6,790.5	-569.3	617.3	641.3	4.63	4.38	1.56
7,122.0	77.50	182.30	6,797.9	-600.4	616.1	672.0	5.94	5.94	0.00
7,153.0	80.20	182.10	6,803.9	-630.8	614.9	702.0	8.73	8.71	-0.65
7,185.0	83.00	182.50	6,808.6	-662.4	613.6	733.2	8.84	8.75	1.25
7,217.0	85.60	182.30	6,811.8	-694.2	612.3	764.6	8.15	8.13	-0.63
7,248.0	87.10	181.80	6,813.7	-725.2	611.2	795.2	5.10	4.84	-1.61
7,265.0	88.30	181.40	6,814.4	-742.1	610.7	812.0	7.44	7.06	-2.35
7,304.0	89.96	180.99	6,815.0	-781.1	609.9	850.5	4.39	4.26	-1.06

7"

<b>Company:</b>	PETROLEUM DEVELOPMENT CORP Weld County CO	<b>Local Co-ordinate Reference:</b>	Well Guttersen 6R-403
<b>Project:</b>	SEC.6-T2N-R63W	<b>TVD Reference:</b>	WELL @ 4848.5ft (Ensign Rig #136 - RKB - 12.5')
<b>Site:</b>	Guttersen 6M-203 Pad Sec.6-T2N-R63W	<b>MD Reference:</b>	WELL @ 4848.5ft (Ensign Rig #136 - RKB - 12.5')
<b>Well:</b>	Guttersen 6R-403	<b>North Reference:</b>	True
<b>Wellbore:</b>	Wellbore #1	<b>Survey Calculation Method:</b>	Minimum Curvature
<b>Design:</b>	Wellbore #1	<b>Database:</b>	Landmark

Survey										
Measured Depth (ft)	Inclination (°)	Azimuth (°)	Vertical Depth (ft)	+N/-S (ft)	+E/-W (ft)	Vertical Section (ft)	Dogleg Rate (°/100ft)	Build Rate (°/100ft)	Turn Rate (°/100ft)	
7,312.0	90.30	180.90	6,815.0	-789.1	609.8	858.5	4.39	4.26	-1.06	
7,403.0	89.20	179.30	6,815.4	-880.1	609.6	948.7	2.13	-1.21	-1.76	
7,494.0	89.30	179.30	6,816.6	-971.1	610.7	1,039.2	0.11	0.11	0.00	
7,585.0	90.80	178.40	6,816.5	-1,062.1	612.5	1,129.7	1.92	1.65	-0.99	
7,676.0	90.00	178.60	6,815.9	-1,153.0	614.9	1,220.2	0.91	-0.88	0.22	
7,766.0	90.20	180.00	6,815.7	-1,243.0	616.0	1,309.7	1.57	0.22	1.56	
7,858.0	89.00	179.00	6,816.4	-1,335.0	616.8	1,401.1	1.70	-1.30	-1.09	
7,950.0	90.50	179.50	6,816.8	-1,427.0	618.0	1,492.5	1.72	1.63	0.54	
8,045.0	90.20	181.40	6,816.2	-1,522.0	617.3	1,586.7	2.02	-0.32	2.00	
8,140.0	89.50	181.80	6,816.4	-1,617.0	614.6	1,680.6	0.85	-0.74	0.42	
8,236.0	89.00	181.60	6,817.7	-1,712.9	611.8	1,775.4	0.56	-0.52	-0.21	
8,331.0	90.10	181.80	6,818.4	-1,807.9	609.0	1,869.3	1.18	1.16	0.21	
8,426.0	89.00	180.50	6,819.2	-1,902.8	607.1	1,963.3	1.79	-1.16	-1.37	
8,521.0	88.70	180.20	6,821.1	-1,997.8	606.5	2,057.5	0.45	-0.32	-0.32	
8,616.0	89.70	179.10	6,822.4	-2,092.8	607.1	2,151.8	1.56	1.05	-1.16	
8,712.0	90.70	178.80	6,822.1	-2,188.8	608.8	2,247.3	1.09	1.04	-0.31	
8,806.0	90.30	178.60	6,821.3	-2,282.8	610.9	2,340.8	0.48	-0.43	-0.21	
8,901.0	89.50	178.40	6,821.4	-2,377.7	613.4	2,435.3	0.87	-0.84	-0.21	
8,996.0	89.30	179.70	6,822.4	-2,472.7	615.0	2,529.8	1.38	-0.21	1.37	
9,091.0	89.60	180.20	6,823.3	-2,567.7	615.1	2,624.1	0.61	0.32	0.53	
9,186.0	89.30	180.90	6,824.2	-2,662.7	614.2	2,718.2	0.80	-0.32	0.74	
9,282.0	89.80	180.90	6,825.0	-2,758.7	612.7	2,813.3	0.52	0.52	0.00	
9,377.0	90.30	180.70	6,824.9	-2,853.7	611.3	2,907.4	0.57	0.53	-0.21	
9,472.0	90.60	181.10	6,824.2	-2,948.7	609.9	3,001.4	0.53	0.32	0.42	
9,566.0	91.40	181.40	6,822.5	-3,042.6	607.8	3,094.4	0.91	0.85	0.32	
9,660.0	90.70	180.90	6,820.8	-3,136.6	605.9	3,187.4	0.92	-0.74	-0.53	
9,757.0	90.10	181.60	6,820.1	-3,233.6	603.8	3,283.4	0.95	-0.62	0.72	
9,851.0	89.30	179.70	6,820.6	-3,327.5	602.7	3,376.5	2.19	-0.85	-2.02	
9,947.0	88.30	179.10	6,822.6	-3,423.5	603.7	3,471.9	1.21	-1.04	-0.63	
10,042.0	87.20	177.70	6,826.4	-3,518.4	606.4	3,566.4	1.87	-1.16	-1.47	
10,137.0	86.50	178.80	6,831.6	-3,613.2	609.3	3,660.8	1.37	-0.74	1.16	
10,232.0	86.50	180.70	6,837.4	-3,708.0	609.7	3,755.0	2.00	0.00	2.00	
10,327.0	88.80	181.40	6,841.3	-3,802.9	608.0	3,848.9	2.53	2.42	0.74	
10,422.0	90.70	181.80	6,841.7	-3,897.9	605.3	3,942.8	2.04	2.00	0.42	
10,517.0	91.10	181.90	6,840.2	-3,992.8	602.2	4,036.6	0.43	0.42	0.11	
10,613.0	90.70	181.40	6,838.7	-4,088.8	599.5	4,131.5	0.67	-0.42	-0.52	
10,708.0	91.00	181.10	6,837.3	-4,183.7	597.4	4,225.5	0.45	0.32	-0.32	
10,803.0	90.70	181.10	6,835.9	-4,278.7	595.6	4,319.5	0.32	-0.32	0.00	
10,898.0	90.60	180.40	6,834.8	-4,373.7	594.3	4,413.6	0.74	-0.11	-0.74	
10,993.0	91.40	181.20	6,833.1	-4,468.7	593.0	4,507.7	1.19	0.84	0.84	
11,089.0	91.50	180.70	6,830.7	-4,564.6	591.4	4,602.7	0.53	0.10	-0.52	
11,181.0	91.90	179.80	6,828.0	-4,656.6	591.0	4,693.9	1.07	0.43	-0.98	
11,233.0	91.90	179.80	6,826.2	-4,708.6	591.2	4,745.5	0.00	0.00	0.00	
BHL 500' FSL, 1475' FEL										

<b>Company:</b>	PETROLEUM DEVELOPMENT CORP Weld County CO	<b>Local Co-ordinate Reference:</b>	Well Guttersen 6R-403
<b>Project:</b>	SEC.6-T2N-R63W	<b>TVD Reference:</b>	WELL @ 4848.5ft (Ensign Rig #136 - RKB - 12.5')
<b>Site:</b>	Guttersen 6M-203 Pad Sec.6-T2N-R63W	<b>MD Reference:</b>	WELL @ 4848.5ft (Ensign Rig #136 - RKB - 12.5')
<b>Well:</b>	Guttersen 6R-403	<b>North Reference:</b>	True
<b>Wellbore:</b>	Wellbore #1	<b>Survey Calculation Method:</b>	Minimum Curvature
<b>Design:</b>	Wellbore #1	<b>Database:</b>	Landmark

Casing Points					
	Measured Depth (ft)	Vertical Depth (ft)	Name	Casing Diameter (")	Hole Diameter (")
	7,304.0	6,815.0	7"	7	7-1/2

Checked By: _____	Approved By: _____	Date: _____
-------------------	--------------------	-------------