

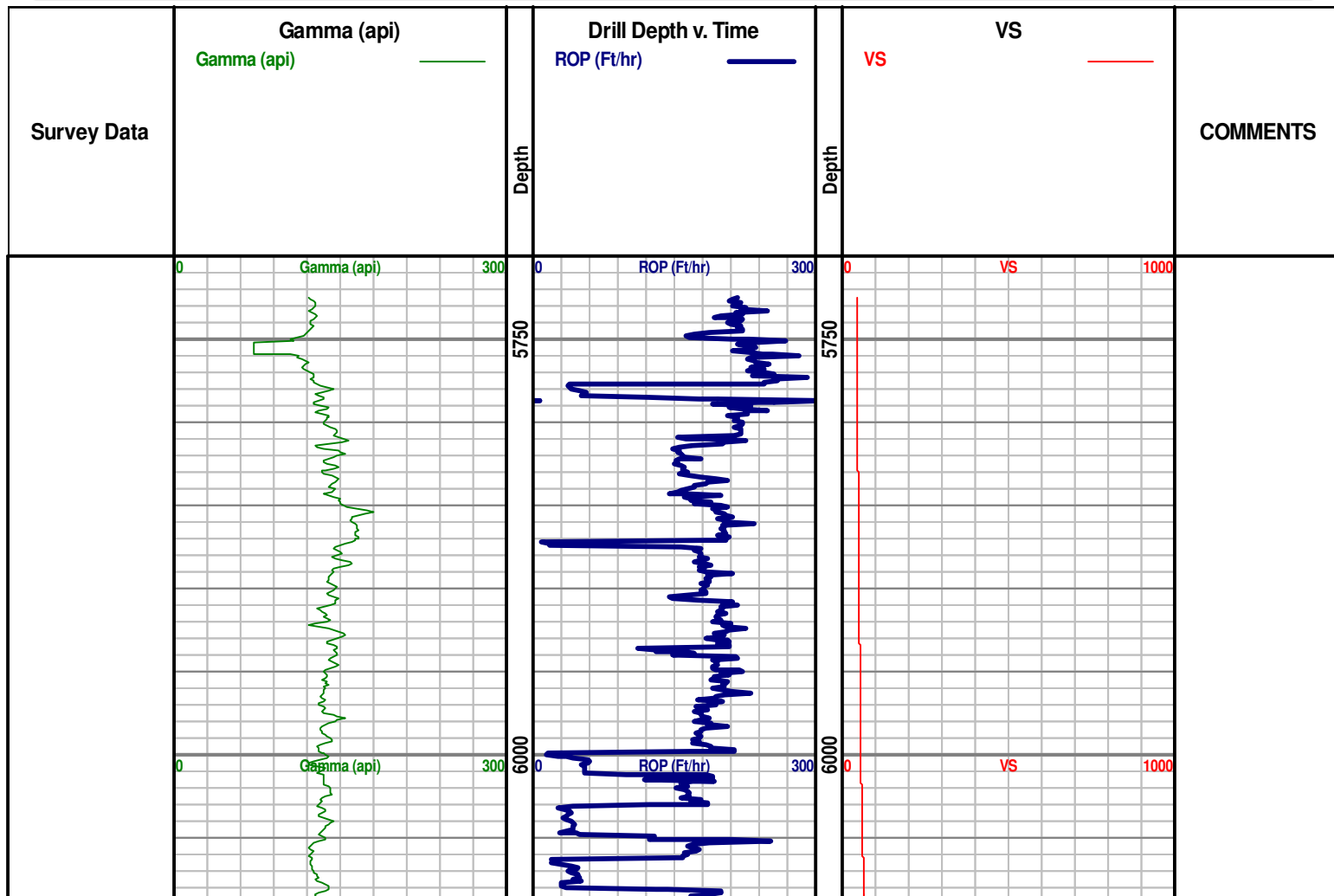


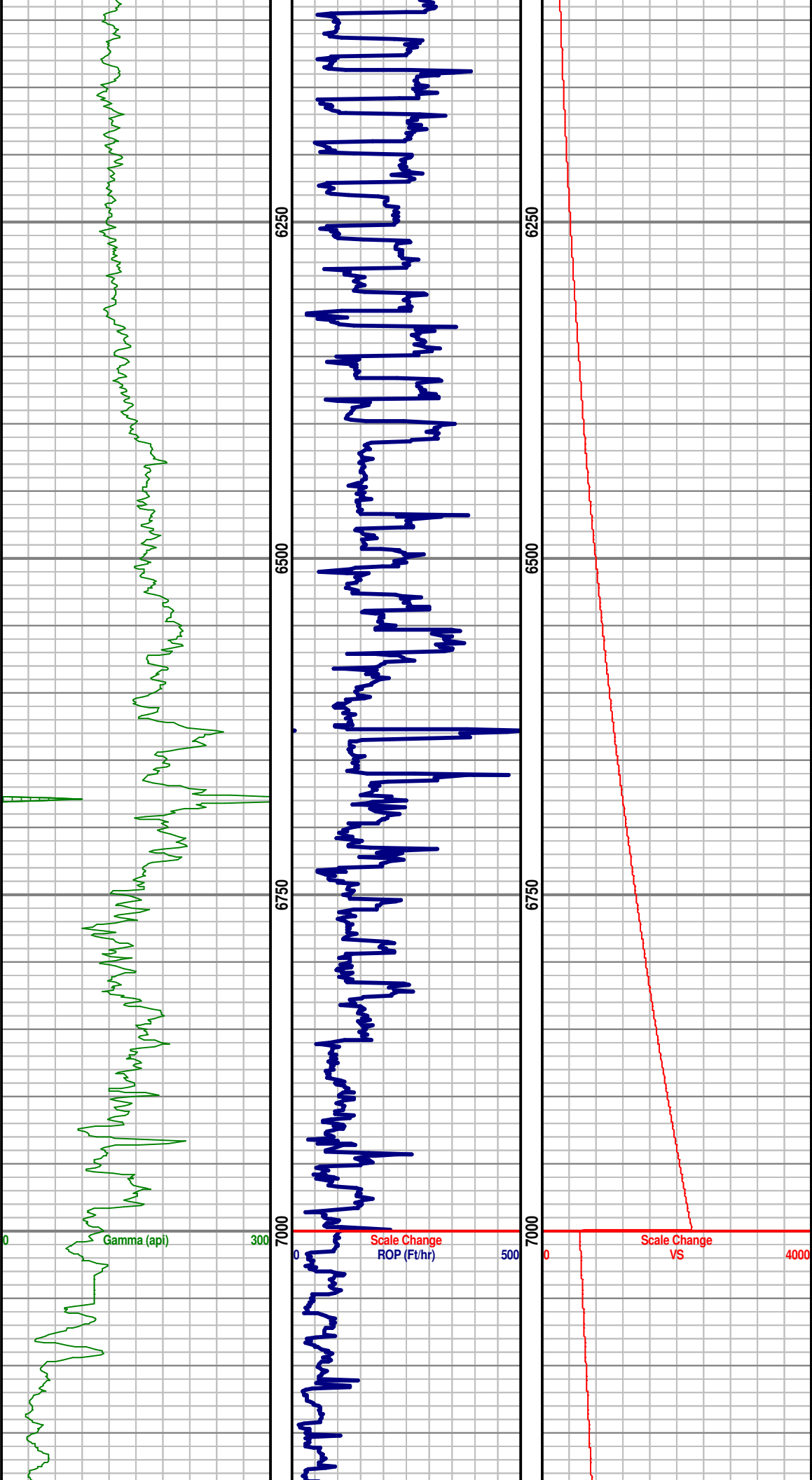
**Denver Remote Management Center**  
**13949 West Colfax Ave, Suite 205**  
**Lakewood, Colorado 80401**

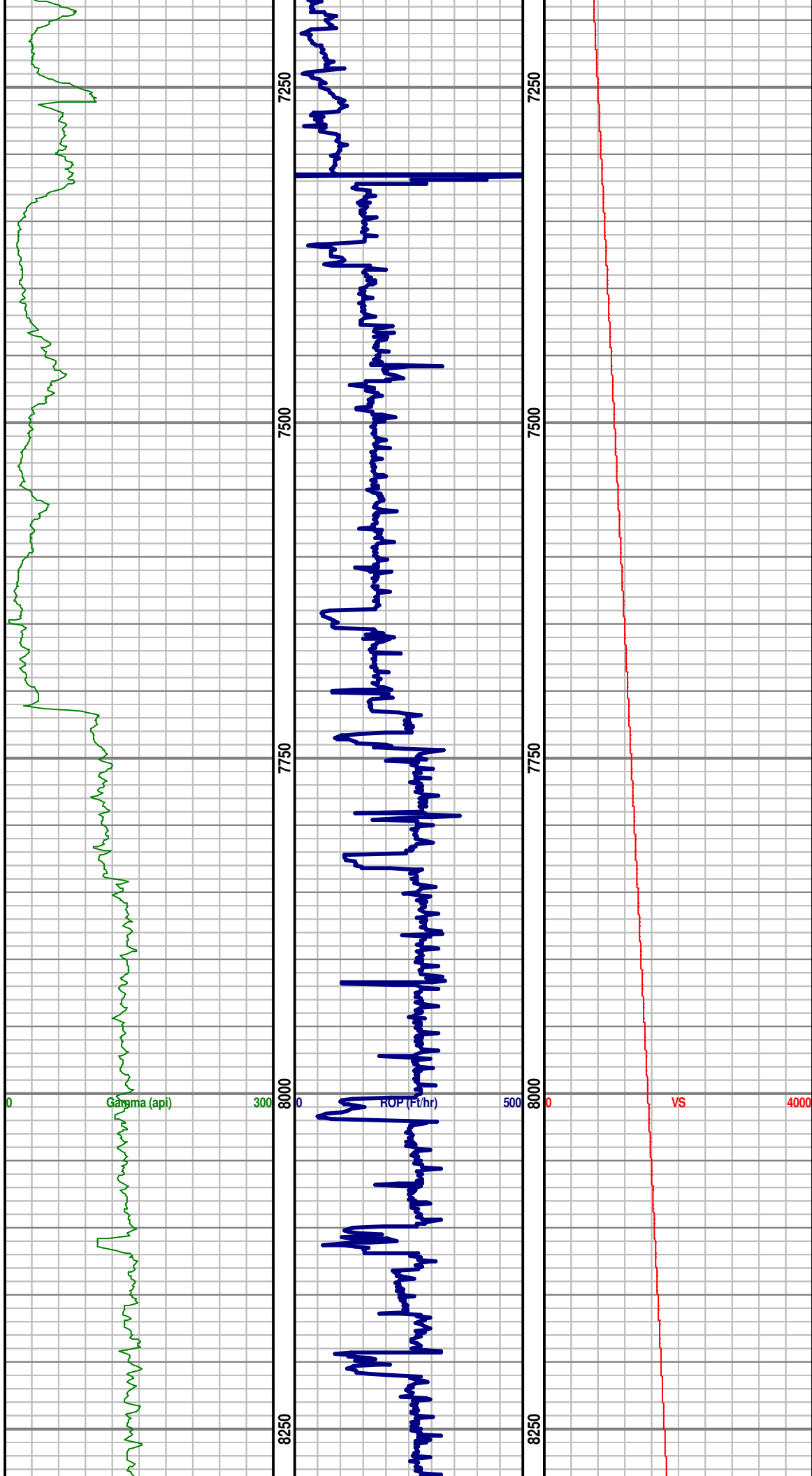
Phone 303.325.3289

**WWW.HZMUD.COM**

Customer Information	Well Information
<b>Operator:</b> PDC Energy Inc 1775 Sherman Street Suite 3000 Denver, CO 80203  <b>Geologist:</b> Steve Sarada PDC Energy, Inc.	<b>Well Name:</b> Guttersen 6R-403  <b>Location:</b> NENE SEC 6, 2N, 63W, 6TH 75' FNL x 504' FEL  <b>County:</b> Weld <b>State:</b> Colorado
Remote Logging Details	
<b>Logger:</b> HORIZON DENVER REMOTE MANAGEMENT CENTER  <b>Log Interval:</b> 5,725' MD to 10,950' <b>Start Date:</b> August 2, 2014 <b>Release Date:</b> TBD	<b>Drilling Rig:</b> Ensign 136 <b>Total Depth:</b> TBD <b>TD Date:</b> August 6, 2014 <b>Field:</b> Wattenberg <b>KB Elevation:</b> 4,836' <b>GR Elevation:</b> 4,823' <b>API Number:</b> 05-123-38281-0000







TD CURVE @  
7,315' MD

