

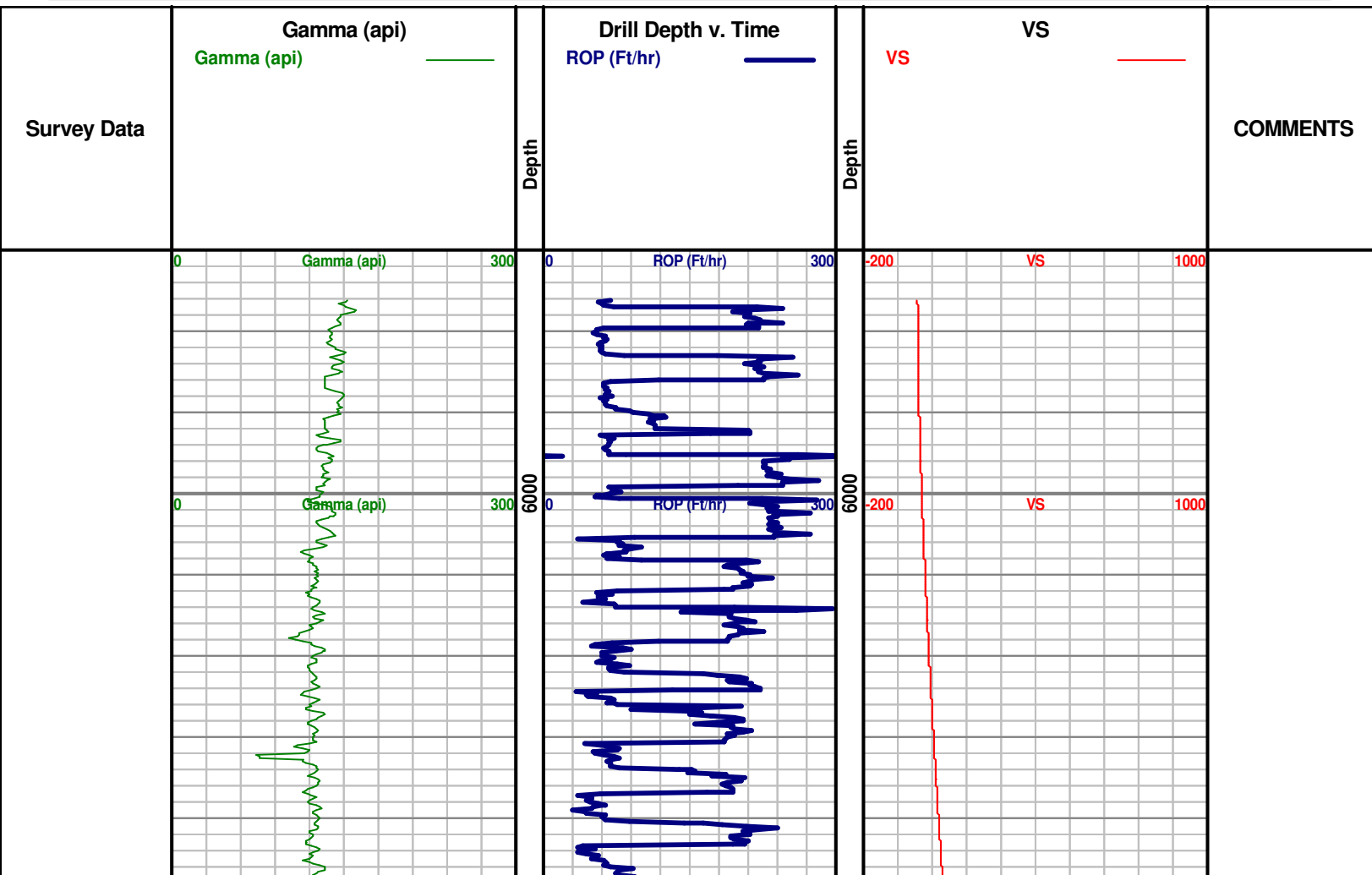


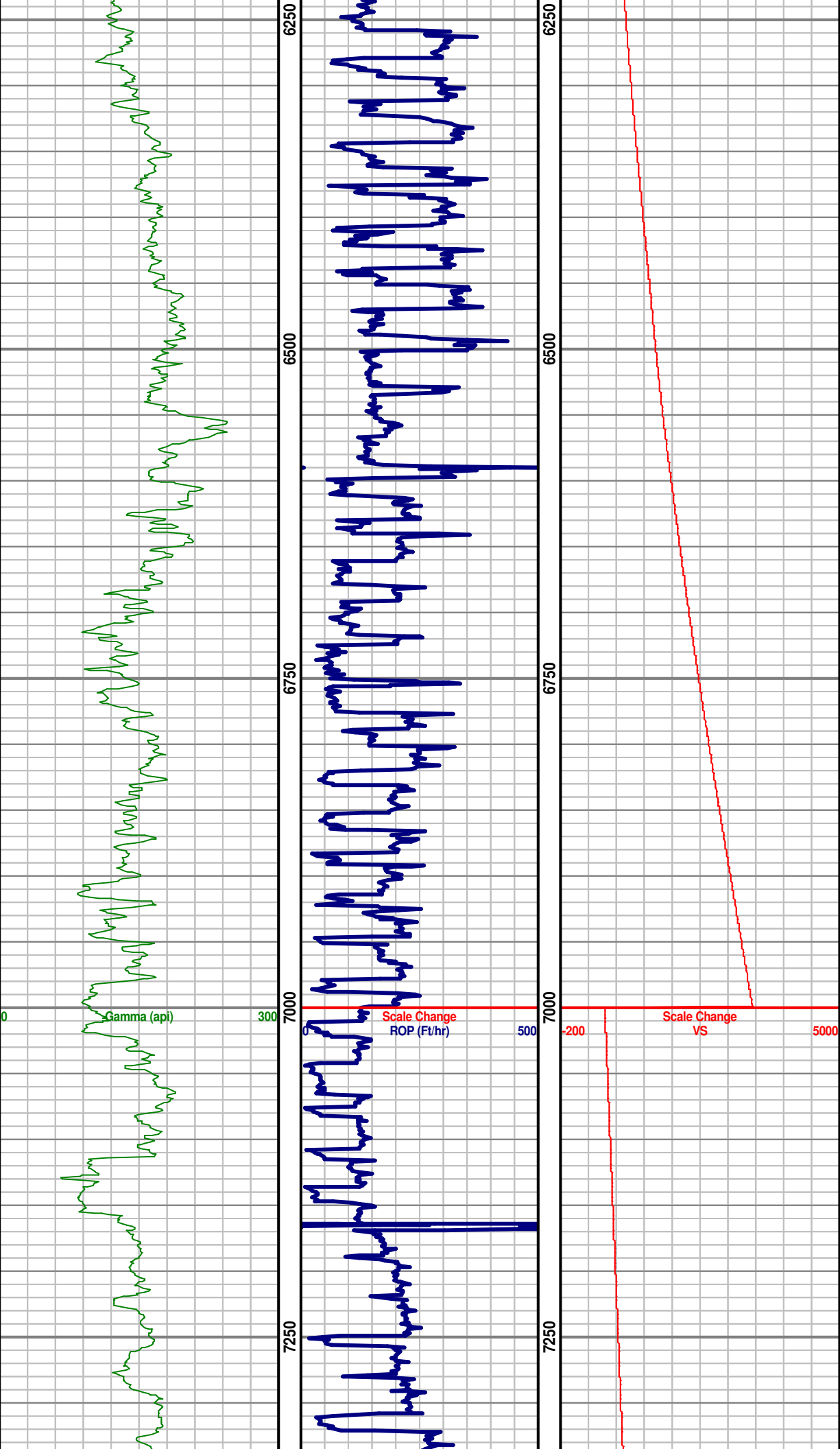
**Denver Remote Management Center**  
**13949 West Colfax Ave, Suite 205**  
**Lakewood, Colorado 80401**

Phone 303.325.3289

**WWW.HZMUD.COM**

Customer Information	Well Information
<p>Operator: <b>PDC Energy Inc</b>  <b>1775 Sherman Street</b>  <b>Suite 3000</b>  <b>Denver, CO 80203</b></p> <p>Geologist: <b>Steve Sarada</b>  <b>PDC Energy, Inc.</b></p>	<p>Well Name: <b>Guttersen 6M-303</b></p> <p>Location: <b>NWNE SEC 6, 2N, 63W, 6TH</b>  <b>75' FNL x 2194' FEL</b></p> <p>County: <b>Weld</b>  State: <b>Colorado</b></p>
Remote Logging Details	
<p>Logger: <b>HORIZON DENVER REMOTE MANAGEMENT CENTER</b></p> <p>Log Interval: <b>5,881' MD to 11,106' MD</b>  Start Date: <b>June30, 2014</b>  Release Date: <b>July 5, 2014</b></p>	<p>Drilling Rig: <b>Ensign 136</b>  Total Depth: <b>11,106' MD</b>  TD Date: <b>July 5, 2014</b>  Field : <b>Wattenberg</b>  KB Elevation: <b>4,836'</b>  GR Elevation: <b>4,823'</b>  API Number: <b>05-123-38273-0000</b></p>





CURVE TD @  
7,164' MD  
(6,707.47' TVD;  
788.66' VS)

