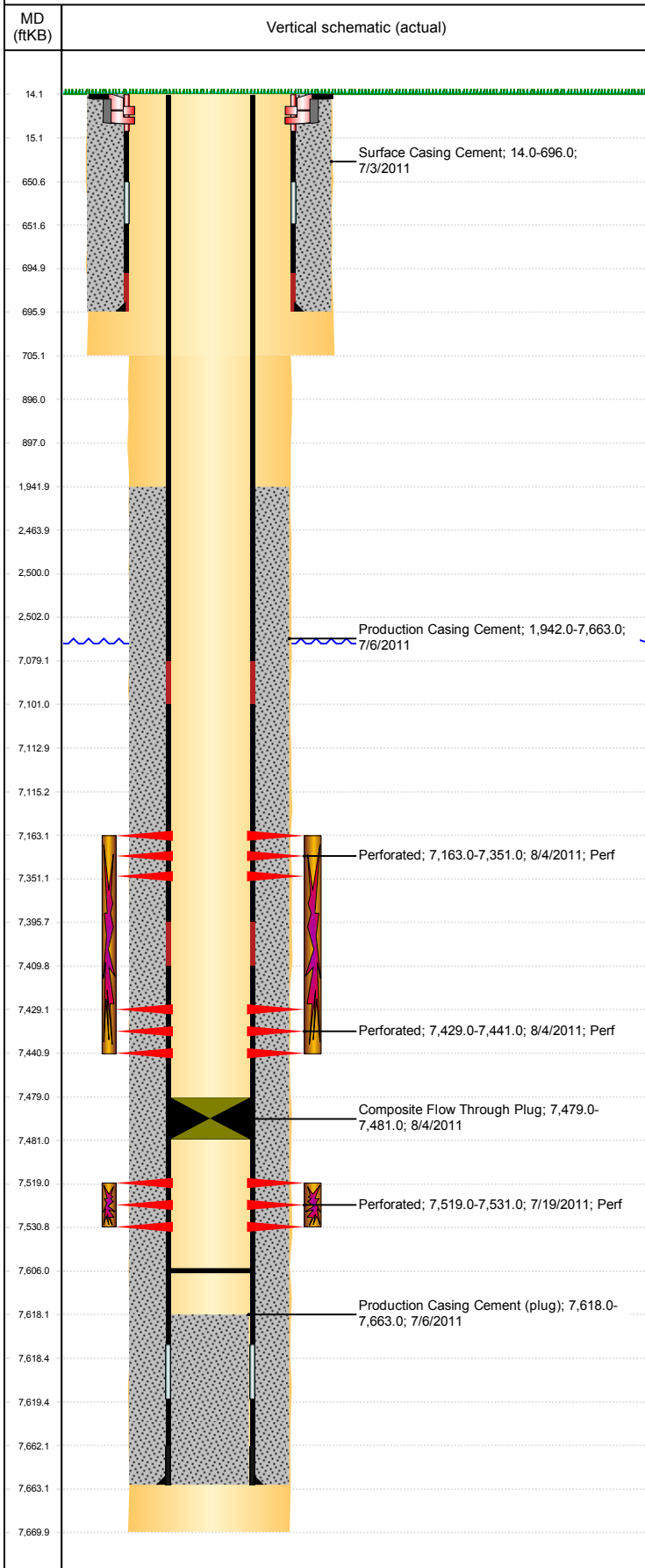


Well Name: HOWARD USX A09-02D

DEVIATED, ORIGINAL HOLE, 3/10/2019 7:18:46 PM



Well Header									
API 05-123-33521		Business Unit DJ BASIN			District 15		Well Config DEVIATED		
KB - GL / MSL (ft... 14.00		Spud Date 7/2/2011		P & A Date		Well Production Status PR		SoRT No	
Comment									
Surface Location (Congressional)									
Qtr 3 SW	Qtr 4 NW	Section 9	Twnshp 6	Twtnsh... N	Range 64	Rng E/... W	Actual Latitude (°) 40.50401571	Actual Longitude (°) -104.55981725	
Wellbore Sections									
Section Des			Size (in)			Act Top, MD (ftKB)		Act Btm, MD (ftKB)	
SURFACE			12 1/4			14		705	
PRODUCTION			7 7/8			705		7,670	
Casing Strings									
Csg Des			Run Date		OD (in)	Wt/Len (lb/ft)	Grade	Top, MD (ftKB)	MD (ftKB)
Surface			7/3/2011		8 5/8	24.00	J-55	14.0	696.0
PRODUCTION			7/6/2011		4 1/2	11.60	M-80	14.0	7,663.0
Cement									
Des					Start Date		Top (ftKB)		Btm (ftKB)
Surface Casing Cement					7/3/2011		14.0		696.0
Production Casing Cement					7/6/2011		1,942.0		7,663.0
Zone Statuses									
Zone Name		Status Date	Status	Fluid Type	Job			Prod Method	
NIOBRARA		8/11/2011	PR		DRILLING/COMPLETION - ORIGINAL, 7/2/2011...				
CODELL		8/11/2011	PR		DRILLING/COMPLETION - ORIGINAL, 7/2/2011...				
Perforation Data									
Linked Zone			Bnch/Stg	Entered Shot Total	Top (ftKB)		Btm (ftKB)		Date
NIOBRARA, ORIGINAL HOLE			B	24	7,163.00		7,351.00		8/4/2011
NIOBRARA, ORIGINAL HOLE			C	24	7,429.00		7,441.00		8/4/2011
CODELL, ORIGINAL HOLE			1	48	7,519.00		7,531.00		7/19/2011
Stimulation Intervals									
Zone				Start Date		Top (ftKB)		Btm (ftKB)	
NIOBRARA, ORIGINAL HOLE				8/4/2011		7,163.0		7,441.0	
CODELL, ORIGINAL HOLE				8/4/2011		7,519.0		7,531.0	
Other In Hole									
Run Date		Des				OD (in)	Top (ftKB)	Btm (ftKB)	
8/4/2011		Composite Flow Through Plug				3.99	7,479.0	7,481.0	
Logs									
Date		Type				Top, MD (ftKB)		Btm, MD (ftKB)	
7/12/2011		CBL/CCL/GR				1,522.0		7,605.0	
10/19/2018		GYRO				14.0		7,400.0	
Plug Back Total Depths									
Date		Type		Com				Depth (ftKB)	
7/12/2011		CEMENT PLUG		DEPTH LOGGER				7,606.0	