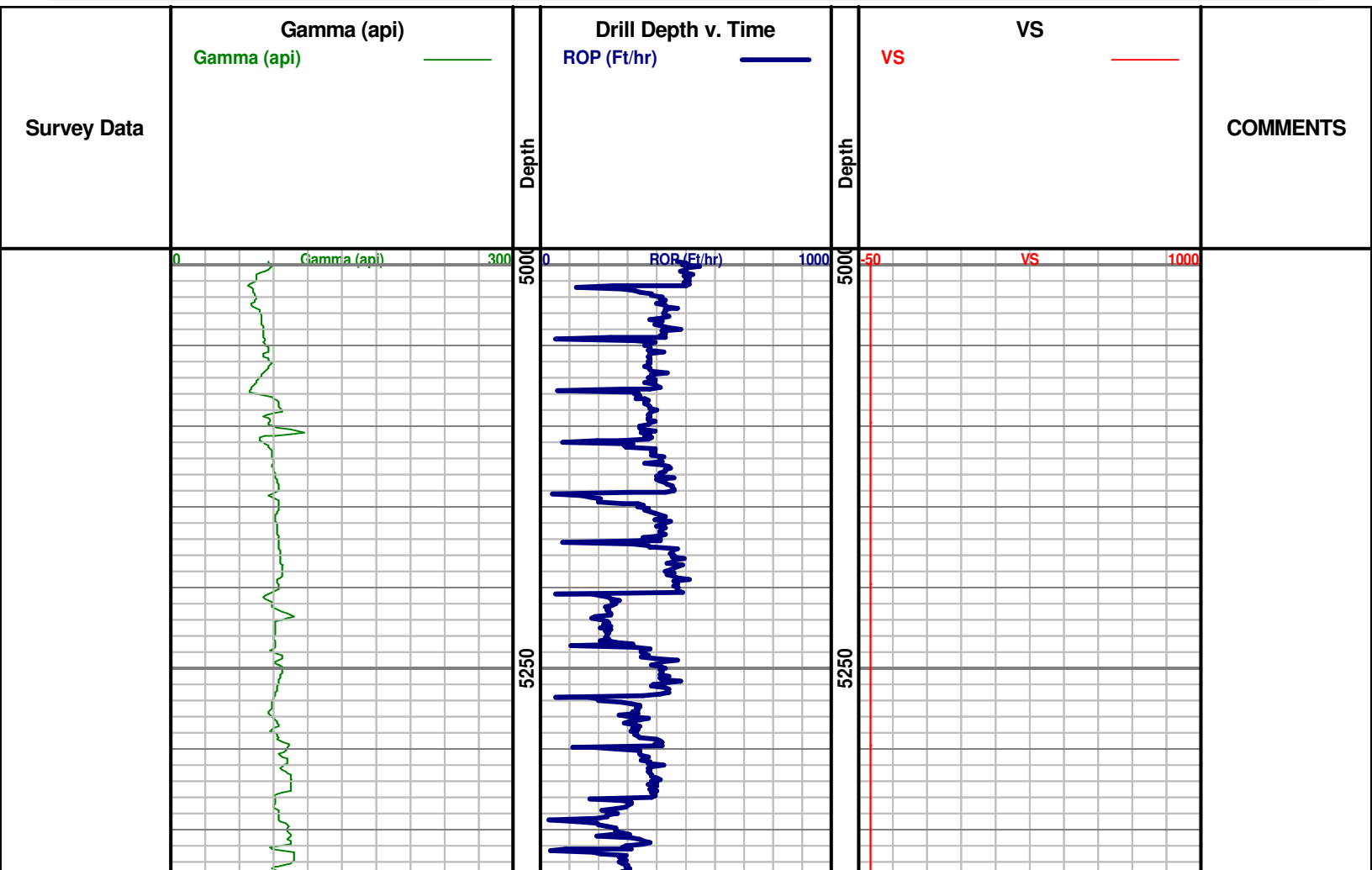


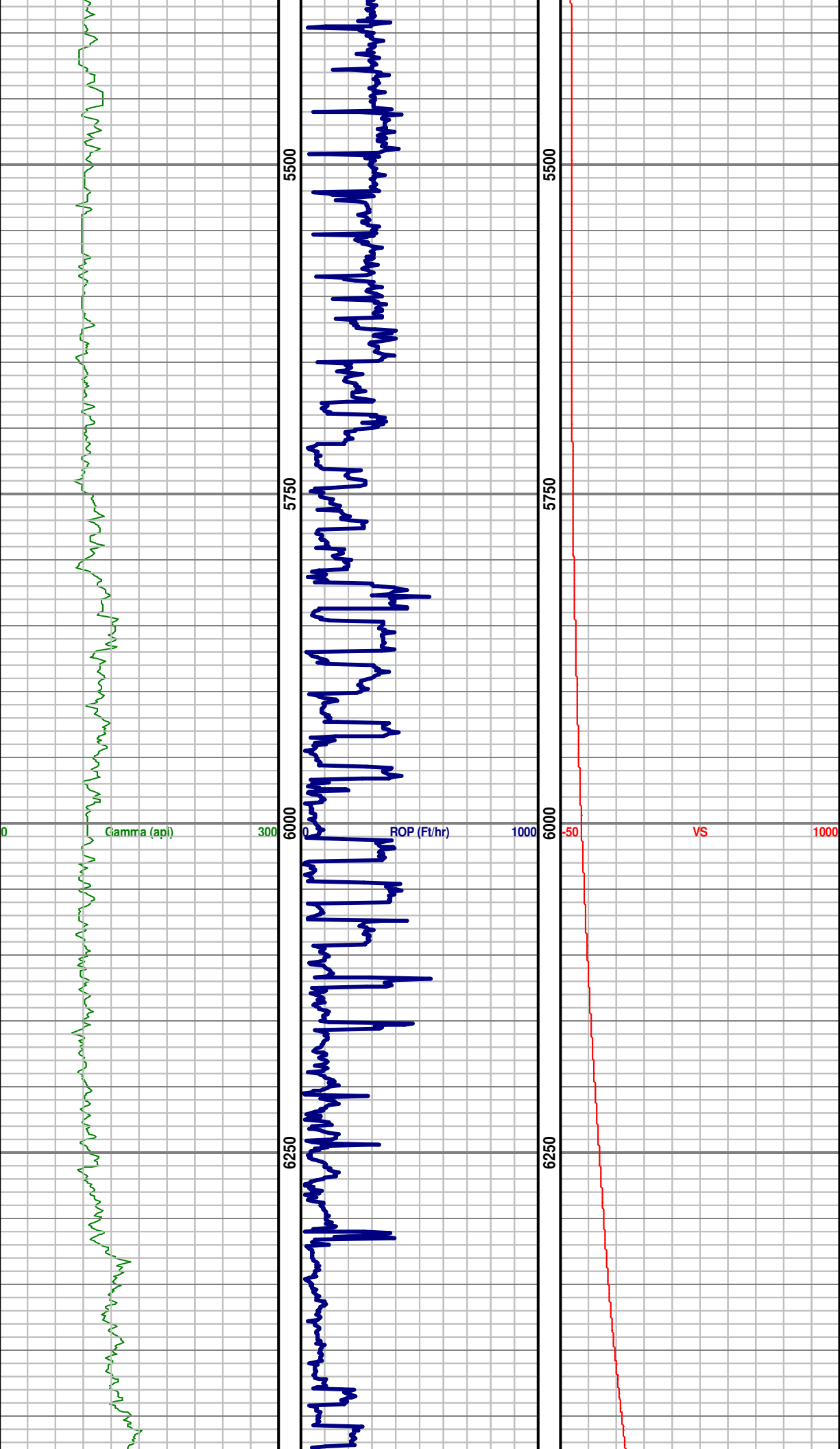


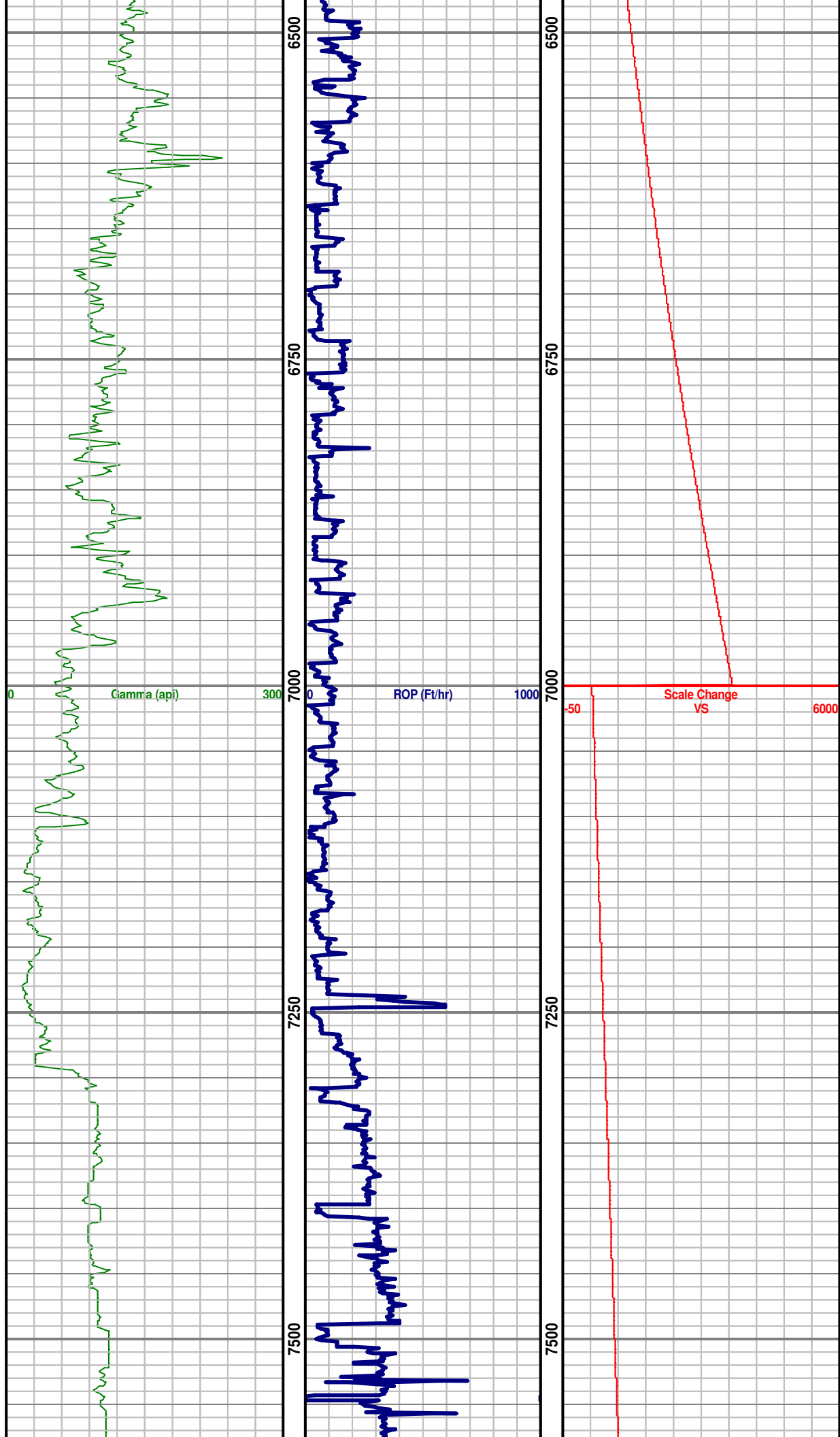
**Denver Remote Management Center**  
**13949 West Colfax Ave, Suite 205**  
**Lakewood, Colorado 80401**

Phone 303.325.3289  
**WWW.HZMUD.COM**

| Customer Information   | Well Information   |
|--|--|
| <p><b>Operator:</b> PDC Energy Inc<br/> 1775 Sherman Street<br/> Suite 3000<br/> Denver, CO 80203</p> <p><b>Geologist:</b> Steve Sarada<br/> PDC Energy, Inc.</p>                                      | <p><b>Well Name:</b> Guttersen 31Q-401</p> <p><b>Location:</b> SWSE SEC 31, 3N, 63W, 6TH<br/> 75' FSL 2,179' FEL</p> <p><b>County:</b> Weld<br/> <b>State:</b> Colorado</p>  |
| Remote Logging Details   |  |
| <p><b>Logger:</b> HORIZON DENVER REMOTE<br/> MANAGEMENT CENTER</p> <p><b>Log Interval:</b> 4,998' MD to 11,132' MD</p> <p><b>Start Date:</b> May 18, 2014</p> <p><b>Release Date:</b> May 23, 2014</p> | <p><b>Drilling Rig:</b> Ensign 136</p> <p><b>Total Depth:</b> 11,132' MD</p> <p><b>TD Date:</b> May 23, 2014</p> <p><b>Field:</b> Wattenberg</p> <p><b>KB Elevation:</b> 4,836'</p> <p><b>GR Elevation:</b> 4,823'</p> <p><b>API Number:</b> 05-123-38304-0000</p> |







TD CURVE @  
7,237' MD

