

PETROLEUM DEVELOPMENT CORP Weld County CO

Well Name: **Guttersen 31Q-401**

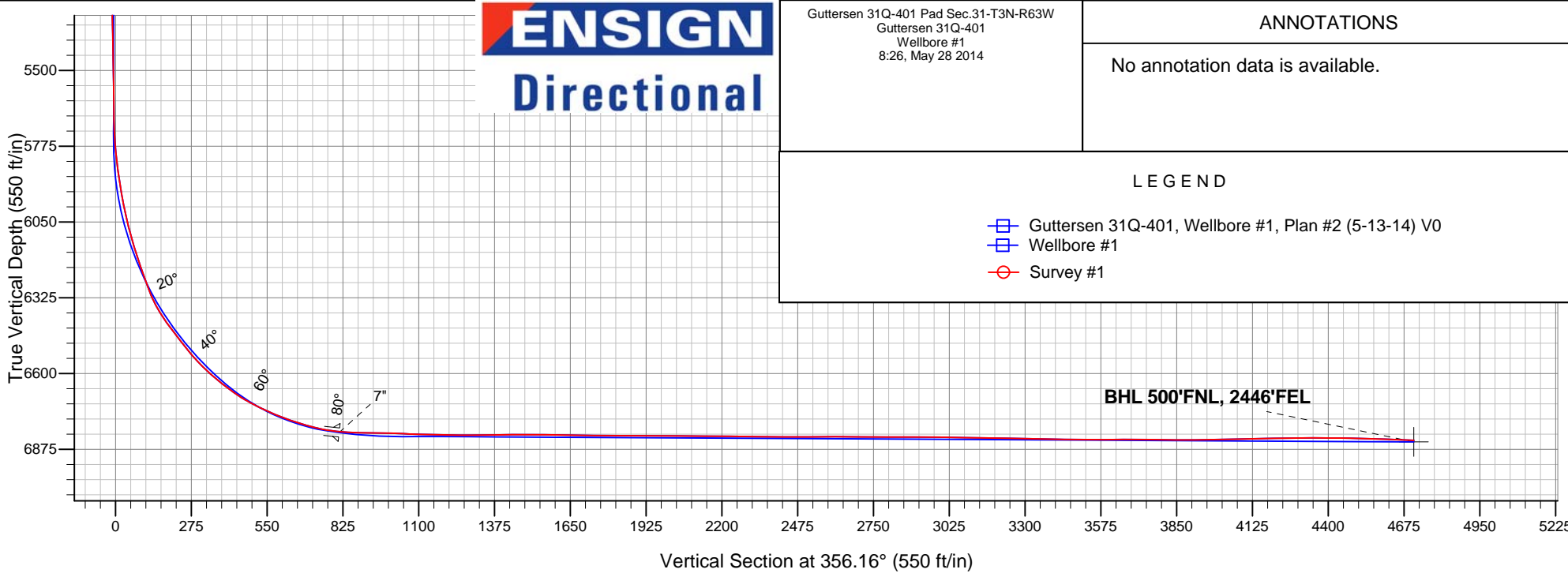
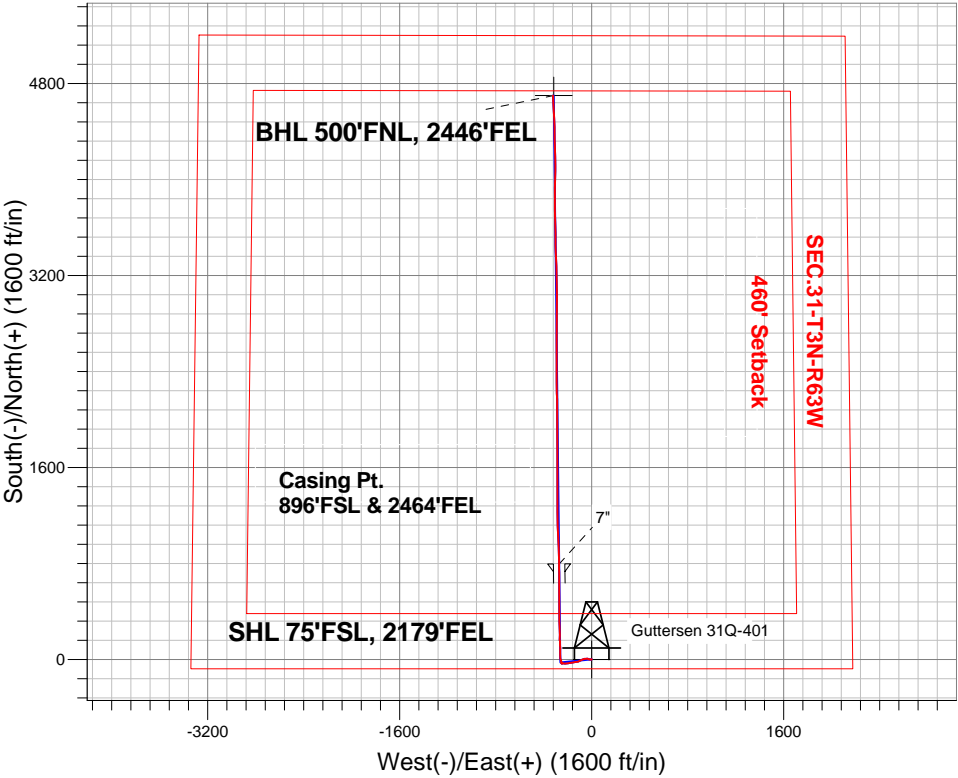
Surface Location: Guttersen 31Q-401 Pad Sec.31-T3N-R63W
North American Datum 1983 , US State Plane 1983 , Colorado Northern Zone

Ground Elevation: 4823.0

+N/-S	+E/-W	Northing	Easting	Latitude	Longitude	Slot
0.0	0.0	1308191.41	3285375.30	40.174870	-104.478720	
Ensign Rig #136 - RKB - 12.5' WELL @ 4835.5ft (Ensign Rig #136 - RKB - 12.5')						

FINAL SURVEY

Projected Bottom Hole Location
11132'MD 6843'TVD 4699'N & 322'W of SHL
87.8 degree Incl @ 357.2 degree AZM



Guttersen 31Q-401 Pad Sec.31-T3N-R63W Guttersen 31Q-401 Wellbore #1 8:26, May 28 2014	ANNOTATIONS
	No annotation data is available.
LEGEND	
Guttersen 31Q-401, Wellbore #1, Plan #2 (5-13-14) V0	
Wellbore #1	
Survey #1	



PETROLEUM DEVELOPMENT CORP Weld County CO

SEC.31-T3N-R63W

Guttersen 31Q-401 Pad Sec.31-T3N-R63W

Guttersen 31Q-401

Wellbore #1

Survey: Survey #1

Standard Survey Report

28 May, 2014

Company:	PETROLEUM DEVELOPMENT CORP Weld County CO	Local Co-ordinate Reference:	Well Gutteresen 31Q-401
Project:	SEC.31-T3N-R63W	TVD Reference:	WELL @ 4835.5ft (Ensign Rig #136 - RKB - 12.5')
Site:	Gutteresen 31Q-401 Pad Sec.31-T3N-R63W	MD Reference:	WELL @ 4835.5ft (Ensign Rig #136 - RKB - 12.5')
Well:	Gutteresen 31Q-401	North Reference:	True
Wellbore:	Wellbore #1	Survey Calculation Method:	Minimum Curvature
Design:	Wellbore #1	Database:	Landmark

Project	SEC.31-T3N-R63W, Weld County, Colorado		
Map System:	US State Plane 1983	System Datum:	Mean Sea Level
Geo Datum:	North American Datum 1983		Using Well Reference Point
Map Zone:	Colorado Northern Zone		Using geodetic scale factor

Site		Guttersen 31Q-401 Pad Sec.31-T3N-R63W			
Site Position:		Northing:	1,308,191.41 ft	Latitude:	40.174870
From:	Lat/Long	Easting:	3,285,375.30 ft	Longitude:	-104.478720
Position Uncertainty:	0.0 ft	Slot Radius:	"	Grid Convergence:	0.66 °

Well	Gutteresen 31Q-401					
Well Position	+N-S	0.0 ft	Northing:	1,308,191.41 ft	Latitude:	40.174870
	+E-W	0.0 ft	Easting:	3,285,375.30 ft	Longitude:	-104.478720
Position Uncertainty		0.0 ft	Wellhead Elevation:	ft	Ground Level:	4,823.0 ft

Wellbore	Wellbore #1				
Magnetics	Model Name	Sample Date	Declination (°)	Dip Angle (°)	Field Strength (nT)
	IGRF2010	5/13/2014	8.30	66.81	52,737

Design	Wellbore #1				
Audit Notes:					
Version:	1.0	Phase:	ACTUAL	Tie On Depth:	0.0
Vertical Section:	Depth From (TVD) (ft)	+N-S (ft)	+E-W (ft)	Direction (°)	
	0.0	0.0	0.0	356.16	

Survey Program	Date 5/28/2014				
From (ft)	To (ft)	Survey (Wellbore)	Tool Name	Description	
72.0	11,132.0	Survey #1 (Wellbore #1)	MWD	MWD - Standard	

Survey										
Measured Depth (ft)	Inclination (°)	Azimuth (°)	Vertical Depth (ft)	+N-S (ft)	+E-W (ft)	Vertical Section (ft)	Dogleg Rate (°/100ft)	Build Rate (°/100ft)	Turn Rate (°/100ft)	
0.0	0.00	0.00	0.0	0.0	0.0	0.0	0.00	0.00	0.00	
1.0	0.01	292.70	1.0	0.0	0.0	0.0	0.83	0.83	0.00	
SHL 75°FSL, 2179°FEL										
72.0	0.60	292.70	72.0	0.1	-0.3	0.2	0.83	0.83	0.00	
162.0	0.60	282.70	162.0	0.4	-1.2	0.5	0.12	0.00	-11.11	
256.0	0.90	263.90	256.0	0.5	-2.5	0.6	0.41	0.32	-20.00	
347.0	1.10	257.70	347.0	0.2	-4.0	0.5	0.25	0.22	-6.81	
437.0	1.10	263.00	437.0	-0.1	-5.7	0.3	0.11	0.00	5.89	
528.0	1.20	263.90	527.9	-0.3	-7.5	0.2	0.11	0.11	0.99	
619.0	1.10	276.00	618.9	-0.3	-9.4	0.3	0.29	-0.11	13.30	

Company:	PETROLEUM DEVELOPMENT CORP Weld County CO	Local Co-ordinate Reference:	Well Gutteresen 31Q-401
Project:	SEC.31-T3N-R63W	TVD Reference:	WELL @ 4835.5ft (Ensign Rig #136 - RKB - 12.5')
Site:	Gutteresen 31Q-401 Pad Sec.31-T3N-R63W	MD Reference:	WELL @ 4835.5ft (Ensign Rig #136 - RKB - 12.5')
Well:	Gutteresen 31Q-401	North Reference:	True
Wellbore:	Wellbore #1	Survey Calculation Method:	Minimum Curvature
Design:	Wellbore #1	Database:	Landmark

Survey									
Measured Depth (ft)	Inclination (°)	Azimuth (°)	Vertical Depth (ft)	+N/-S (ft)	+E/-W (ft)	Vertical Section (ft)	Dogleg Rate (°/100ft)	Build Rate (°/100ft)	Turn Rate (°/100ft)
710.0	1.00	263.50	709.9	-0.3	-11.0	0.4	0.27	-0.11	-13.74
801.0	0.90	259.80	800.9	-0.5	-12.5	0.3	0.13	-0.11	-4.07
882.0	1.10	267.60	881.9	-0.7	-13.9	0.3	0.30	0.25	9.63
961.0	1.40	271.60	960.9	-0.7	-15.6	0.4	0.40	0.38	5.06
1,054.0	1.00	265.80	1,053.8	-0.7	-17.6	0.5	0.45	-0.43	-6.24
1,145.0	2.20	280.00	1,144.8	-0.5	-20.1	0.9	1.38	1.32	15.60
1,236.0	1.00	268.80	1,235.8	-0.2	-22.6	1.3	1.36	-1.32	-12.31
1,327.0	2.90	306.40	1,326.7	1.2	-25.2	2.9	2.41	2.09	41.32
1,418.0	5.50	295.50	1,417.5	4.4	-31.0	6.5	2.98	2.86	-11.98
1,509.0	6.40	264.90	1,508.0	5.9	-40.0	8.5	3.57	0.99	-33.63
1,600.0	5.90	266.70	1,598.5	5.1	-49.7	8.5	0.59	-0.55	1.98
1,691.0	5.60	268.30	1,689.0	4.7	-58.9	8.7	0.37	-0.33	1.76
1,781.0	7.50	246.80	1,778.4	2.3	-68.6	6.9	3.41	2.11	-23.89
1,871.0	6.70	243.30	1,867.7	-2.4	-78.7	2.9	1.01	-0.89	-3.89
1,962.0	5.80	242.60	1,958.2	-6.9	-87.6	-1.0	0.99	-0.99	-0.77
2,053.0	6.30	249.80	2,048.7	-10.7	-96.3	-4.2	1.00	0.55	7.91
2,144.0	6.10	241.20	2,139.2	-14.8	-105.3	-7.7	1.04	-0.22	-9.45
2,238.0	5.90	250.20	2,232.7	-18.8	-114.2	-11.1	1.02	-0.21	9.57
2,333.0	6.20	267.70	2,327.1	-20.7	-123.9	-12.3	1.96	0.32	18.42
2,428.0	6.10	263.90	2,421.6	-21.4	-134.0	-12.4	0.44	-0.11	-4.00
2,523.0	5.30	260.50	2,516.1	-22.7	-143.4	-13.0	0.91	-0.84	-3.58
2,619.0	4.80	252.10	2,611.7	-24.7	-151.6	-14.4	0.93	-0.52	-8.75
2,714.0	6.00	264.90	2,706.3	-26.3	-160.3	-15.5	1.78	1.26	13.47
2,809.0	6.20	263.70	2,800.8	-27.3	-170.4	-15.8	0.25	0.21	-1.26
2,904.0	5.80	260.20	2,895.3	-28.7	-180.2	-16.6	0.57	-0.42	-3.68
2,999.0	4.90	260.40	2,989.8	-30.2	-188.9	-17.5	0.95	-0.95	0.21
3,094.0	4.70	256.20	3,084.5	-31.8	-196.7	-18.5	0.43	-0.21	-4.42
3,190.0	5.20	265.60	3,180.2	-33.1	-204.9	-19.3	0.99	0.52	9.79
3,285.0	4.80	258.10	3,274.8	-34.2	-213.0	-19.9	0.81	-0.42	-7.89
3,380.0	4.70	271.60	3,369.5	-34.9	-220.8	-20.1	1.18	-0.11	14.21
3,475.0	3.30	272.50	3,464.2	-34.7	-227.4	-19.4	1.48	-1.47	0.95
3,571.0	2.50	288.50	3,560.1	-33.9	-232.2	-18.3	1.18	-0.83	16.67
3,666.0	2.80	285.30	3,655.0	-32.7	-236.4	-16.7	0.35	0.32	-3.37
3,761.0	2.70	289.00	3,749.9	-31.3	-240.7	-15.1	0.21	-0.11	3.89
3,856.0	2.00	244.90	3,844.8	-31.3	-244.4	-14.8	1.98	-0.74	-46.42
3,951.0	1.50	209.00	3,939.8	-33.1	-246.5	-16.5	1.24	-0.53	-37.79
4,046.0	0.30	2.10	4,034.8	-33.9	-247.1	-17.3	1.87	-1.26	161.16
4,142.0	0.40	344.70	4,130.8	-33.3	-247.1	-16.7	0.15	0.10	-18.13
4,237.0	0.70	314.00	4,225.8	-32.6	-247.6	-15.9	0.43	0.32	-32.32
4,332.0	0.60	290.10	4,320.8	-32.0	-248.5	-15.3	0.30	-0.11	-25.16
4,427.0	0.50	272.40	4,415.8	-31.9	-249.4	-15.1	0.21	-0.11	-18.63
4,522.0	0.40	291.10	4,510.8	-31.7	-250.1	-14.9	0.19	-0.11	19.68
4,617.0	0.20	0.70	4,605.8	-31.4	-250.4	-14.6	0.40	-0.21	73.26
4,712.0	0.40	262.50	4,700.8	-31.3	-250.8	-14.4	0.50	0.21	-103.37
4,808.0	0.50	313.80	4,796.8	-31.1	-251.4	-14.1	0.42	0.10	53.44
4,903.0	0.20	76.20	4,891.8	-30.7	-251.5	-13.8	0.66	-0.32	128.84
4,998.0	0.40	94.10	4,986.8	-30.7	-251.0	-13.8	0.23	0.21	18.84
5,093.0	0.50	54.00	5,081.8	-30.5	-250.4	-13.7	0.34	0.11	-42.21
5,189.0	0.60	22.20	5,177.7	-29.8	-249.8	-13.0	0.33	0.10	-33.13
5,284.0	0.60	2.50	5,272.7	-28.8	-249.6	-12.0	0.22	0.00	-20.74
5,379.0	1.10	345.80	5,367.7	-27.5	-249.8	-10.6	0.58	0.53	-17.58

Company:	PETROLEUM DEVELOPMENT CORP Weld County CO	Local Co-ordinate Reference:	Well Gutteresen 31Q-401
Project:	SEC.31-T3N-R63W	TVD Reference:	WELL @ 4835.5ft (Ensign Rig #136 - RKB - 12.5')
Site:	Gutteresen 31Q-401 Pad Sec.31-T3N-R63W	MD Reference:	WELL @ 4835.5ft (Ensign Rig #136 - RKB - 12.5')
Well:	Gutteresen 31Q-401	North Reference:	True
Wellbore:	Wellbore #1	Survey Calculation Method:	Minimum Curvature
Design:	Wellbore #1	Database:	Landmark

Survey										
Measured Depth (ft)	Inclination (°)	Azimuth (°)	Vertical Depth (ft)	+N/-S (ft)	+E/-W (ft)	Vertical Section (ft)	Dogleg Rate (°/100ft)	Build Rate (°/100ft)	Turn Rate (°/100ft)	
5,473.0	0.90	335.60	5,461.7	-25.9	-250.4	-9.1	0.28	-0.21	-10.85	
5,569.0	1.00	357.20	5,557.7	-24.4	-250.7	-7.5	0.38	0.10	22.50	
5,664.0	0.90	326.50	5,652.7	-22.9	-251.2	-6.0	0.54	-0.11	-32.32	
5,696.0	0.50	325.90	5,684.7	-22.6	-251.4	-5.7	1.25	-1.25	-1.88	
5,727.0	1.80	346.00	5,715.7	-22.0	-251.6	-5.1	4.33	4.19	64.84	
5,759.0	4.00	343.00	5,747.6	-20.5	-252.0	-3.5	6.89	6.88	-9.38	
5,791.0	6.00	338.60	5,779.5	-17.8	-253.0	-0.8	6.36	6.25	-13.75	
5,823.0	6.60	337.00	5,811.3	-14.6	-254.3	2.5	1.95	1.88	-5.00	
5,854.0	7.20	336.50	5,842.1	-11.2	-255.8	6.0	1.95	1.94	-1.61	
5,886.0	8.00	337.70	5,873.8	-7.3	-257.4	10.0	2.55	2.50	3.75	
5,918.0	8.40	344.90	5,905.5	-3.0	-258.9	14.4	3.44	1.25	22.50	
5,950.0	10.10	347.90	5,937.1	2.0	-260.1	19.5	5.52	5.31	9.38	
5,981.0	10.70	349.30	5,967.6	7.5	-261.2	25.0	2.10	1.94	4.52	
6,013.0	11.90	358.10	5,998.9	13.7	-261.8	31.3	6.55	3.75	27.50	
6,045.0	12.80	358.60	6,030.2	20.6	-262.0	38.1	2.83	2.81	1.56	
6,077.0	13.70	357.80	6,061.4	27.9	-262.3	45.4	2.87	2.81	-2.50	
6,108.0	14.90	356.90	6,091.4	35.6	-262.6	53.1	3.94	3.87	-2.90	
6,140.0	16.20	356.30	6,122.2	44.1	-263.1	61.7	4.09	4.06	-1.88	
6,172.0	17.60	359.00	6,152.8	53.4	-263.5	71.0	5.01	4.38	8.44	
6,203.0	19.20	2.90	6,182.3	63.2	-263.3	80.7	6.51	5.16	12.58	
6,235.0	19.30	3.40	6,212.5	73.7	-262.7	91.2	0.60	0.31	1.56	
6,267.0	18.90	1.60	6,242.7	84.2	-262.3	101.6	2.22	-1.25	-5.63	
6,299.0	19.40	357.90	6,272.9	94.7	-262.3	112.1	4.10	1.56	-11.56	
6,331.0	21.40	355.50	6,302.9	105.8	-263.0	123.2	6.77	6.25	-7.50	
6,362.0	25.10	355.80	6,331.4	118.0	-263.9	135.4	11.94	11.94	0.97	
6,394.0	29.30	357.40	6,359.9	132.6	-264.8	150.1	13.32	13.13	5.00	
6,426.0	32.50	358.60	6,387.3	149.0	-265.3	166.5	10.18	10.00	3.75	
6,457.0	34.90	359.70	6,413.1	166.2	-265.6	183.7	7.99	7.74	3.55	
6,489.0	37.50	0.40	6,438.9	185.1	-265.6	202.5	8.23	8.13	2.19	
6,521.0	38.20	0.70	6,464.2	204.8	-265.4	222.1	2.26	2.19	0.94	
6,553.0	38.00	358.80	6,489.4	224.5	-265.5	241.8	3.72	-0.63	-5.94	
6,584.0	39.10	357.60	6,513.6	243.8	-266.1	261.1	4.29	3.55	-3.87	
6,616.0	41.00	357.60	6,538.1	264.4	-266.9	281.7	5.94	5.94	0.00	
6,648.0	43.40	357.80	6,561.8	285.9	-267.8	303.2	7.51	7.50	0.63	
6,680.0	46.10	358.30	6,584.5	308.4	-268.5	325.7	8.51	8.44	1.56	
6,712.0	49.20	359.50	6,606.1	332.0	-269.0	349.3	10.08	9.69	3.75	
6,743.0	51.30	0.40	6,625.9	355.9	-269.0	373.1	7.13	6.77	2.90	
6,775.0	51.80	359.70	6,645.8	380.9	-269.0	398.1	2.32	1.56	-2.19	
6,807.0	54.30	358.80	6,665.1	406.5	-269.3	423.6	8.13	7.81	-2.81	
6,839.0	57.20	359.00	6,683.1	432.9	-269.8	450.0	9.08	9.06	0.63	
6,870.0	60.50	359.50	6,699.1	459.4	-270.2	476.5	10.73	10.65	1.61	
6,902.0	63.10	359.90	6,714.2	487.6	-270.3	504.7	8.20	8.13	1.25	
6,934.0	65.00	0.00	6,728.2	516.4	-270.4	533.4	5.94	5.94	0.31	
6,965.0	66.10	0.00	6,741.0	544.6	-270.4	561.5	3.55	3.55	0.00	
6,997.0	67.70	0.20	6,753.6	574.1	-270.3	590.9	5.03	5.00	0.63	
7,029.0	70.30	359.70	6,765.1	603.9	-270.3	620.7	8.25	8.13	-1.56	
7,061.0	72.30	359.50	6,775.3	634.3	-270.5	651.0	6.28	6.25	-0.63	
7,092.0	73.70	359.70	6,784.4	663.9	-270.7	680.6	4.56	4.52	0.65	
7,124.0	75.30	359.20	6,792.9	694.7	-271.0	711.3	5.22	5.00	-1.56	
7,156.0	77.60	359.00	6,800.4	725.8	-271.5	742.4	7.21	7.19	-0.63	
7,187.0	81.30	359.20	6,806.1	756.3	-272.0	772.8	11.95	11.94	0.65	
7,252.0	86.80	359.70	6,812.8	820.9	-272.6	837.4	8.50	8.46	0.77	

Company:	PETROLEUM DEVELOPMENT CORP Weld County CO	Local Co-ordinate Reference:	Well Gutteresen 31Q-401
Project:	SEC.31-T3N-R63W	TVD Reference:	WELL @ 4835.5ft (Ensign Rig #136 - RKB - 12.5')
Site:	Gutteresen 31Q-401 Pad Sec.31-T3N-R63W	MD Reference:	WELL @ 4835.5ft (Ensign Rig #136 - RKB - 12.5')
Well:	Gutteresen 31Q-401	North Reference:	True
Wellbore:	Wellbore #1	Survey Calculation Method:	Minimum Curvature
Design:	Wellbore #1	Database:	Landmark

Survey										
Measured Depth (ft)	Inclination (°)	Azimuth (°)	Vertical Depth (ft)	+N/-S (ft)	+E/-W (ft)	Vertical Section (ft)	Dogleg Rate (°/100ft)	Build Rate (°/100ft)	Turn Rate (°/100ft)	
7,343.0	89.90	358.30	6,815.5	911.9	-274.2	928.2	3.74	3.41	-1.54	
7,434.0	87.40	356.70	6,817.6	1,002.7	-278.2	1,019.1	3.26	-2.75	-1.76	
7,525.0	88.50	357.90	6,820.9	1,093.6	-282.5	1,110.0	1.79	1.21	1.32	
7,615.0	88.90	359.20	6,822.9	1,183.5	-284.7	1,199.9	1.51	0.44	1.44	
7,706.0	90.20	0.40	6,823.6	1,274.5	-285.1	1,290.8	1.94	1.43	1.32	
7,797.0	90.90	359.50	6,822.8	1,365.5	-285.1	1,381.6	1.25	0.77	-0.99	
7,888.0	90.50	0.70	6,821.6	1,456.5	-285.0	1,472.3	1.39	-0.44	1.32	
7,982.0	88.70	358.80	6,822.3	1,550.5	-285.4	1,566.1	2.78	-1.91	-2.02	
8,077.0	89.20	359.00	6,824.0	1,645.5	-287.2	1,661.0	0.57	0.53	0.21	
8,172.0	89.70	0.40	6,824.9	1,740.4	-287.7	1,755.8	1.56	0.53	1.47	
8,267.0	89.50	0.40	6,825.6	1,835.4	-287.1	1,850.6	0.21	-0.21	0.00	
8,363.0	90.20	0.00	6,825.9	1,931.4	-286.7	1,946.3	0.84	0.73	-0.42	
8,458.0	89.30	359.30	6,826.3	2,026.4	-287.3	2,041.1	1.20	-0.95	-0.74	
8,553.0	89.70	359.70	6,827.1	2,121.4	-288.1	2,136.0	0.60	0.42	0.42	
8,648.0	89.40	358.60	6,827.9	2,216.4	-289.5	2,230.8	1.20	-0.32	-1.16	
8,743.0	89.20	359.50	6,829.0	2,311.4	-291.1	2,325.7	0.97	-0.21	0.95	
8,838.0	89.90	359.30	6,829.8	2,406.4	-292.1	2,420.6	0.77	0.74	-0.21	
8,934.0	90.20	0.40	6,829.7	2,502.4	-292.4	2,516.3	1.19	0.31	1.15	
9,029.0	90.10	0.00	6,829.4	2,597.4	-292.0	2,611.1	0.43	-0.11	-0.42	
9,124.0	89.30	0.00	6,829.9	2,692.4	-292.0	2,705.9	0.84	-0.84	0.00	
9,219.0	90.20	0.90	6,830.3	2,787.4	-291.3	2,800.6	1.34	0.95	0.95	
9,314.0	89.80	0.70	6,830.3	2,882.4	-290.0	2,895.3	0.47	-0.42	-0.21	
9,410.0	89.30	0.20	6,831.1	2,978.4	-289.2	2,991.0	0.74	-0.52	-0.52	
9,505.0	88.90	358.80	6,832.6	3,073.3	-290.0	3,085.9	1.53	-0.42	-1.47	
9,600.0	89.10	358.50	6,834.2	3,168.3	-292.3	3,180.8	0.38	0.21	-0.32	
9,695.0	88.90	358.30	6,835.9	3,263.2	-294.9	3,275.7	0.30	-0.21	-0.21	
9,790.0	88.90	357.80	6,837.7	3,358.2	-298.2	3,370.6	0.53	0.00	-0.53	
9,886.0	88.90	359.20	6,839.6	3,454.1	-300.7	3,466.5	1.46	0.00	1.46	
9,981.0	90.60	359.20	6,840.0	3,549.1	-302.0	3,561.4	1.79	1.79	0.00	
10,076.0	90.10	358.30	6,839.4	3,644.1	-304.1	3,656.3	1.08	-0.53	-0.95	
10,171.0	89.70	359.20	6,839.6	3,739.1	-306.1	3,751.2	1.04	-0.42	0.95	
10,266.0	89.10	0.20	6,840.6	3,834.0	-306.6	3,846.0	1.23	-0.63	1.05	
10,361.0	90.70	0.60	6,840.7	3,929.0	-306.0	3,940.7	1.74	1.68	0.42	
10,456.0	91.80	1.30	6,838.7	4,024.0	-304.4	4,035.4	1.37	1.16	0.74	
10,551.0	91.10	359.90	6,836.3	4,119.0	-303.4	4,130.0	1.65	-0.74	-1.47	
10,647.0	90.70	358.10	6,834.7	4,214.9	-305.1	4,225.9	1.92	-0.42	-1.88	
10,742.0	89.80	359.20	6,834.3	4,309.9	-307.3	4,320.8	1.50	-0.95	1.16	
10,837.0	90.30	358.60	6,834.2	4,404.9	-309.1	4,415.7	0.82	0.53	-0.63	
10,932.0	88.60	357.40	6,835.2	4,499.8	-312.5	4,510.6	2.19	-1.79	-1.26	
11,028.0	87.60	357.40	6,838.3	4,595.7	-316.8	4,606.6	1.04	-1.04	0.00	
11,131.9	87.80	357.20	6,842.5	4,699.4	-321.7	4,710.4	0.27	0.19	-0.19	
BHL 500°FNL, 2440°FEL										
11,132.0	87.80	357.20	6,842.5	4,699.5	-321.7	4,710.5	0.27	0.19	-0.19	

Checked By: _____	Approved By: _____	Date: _____
-------------------	--------------------	-------------