

LEGEND:

- = PROPOSED WELLHEAD.
- = TARGET BOTTOM HOLE.
- ◆ = PRODUCTION INTERVAL.
- ▲ = SECTION CORNERS LOCATED. (NAD 83)

NOTE:

Distances referenced on plat to section lines are perpendicular.

T5N, R61W, 6th P.M.

LINE TABLE		
LINE	DIRECTION	LENGTH
L1	S46°17'12"E	866.54'
L2	S00°11'41"E	460.05'
L3	S00°11'15"E	100.00'

2006 Alum. Cap,
#7735, 2.7'
Below Ground
Lat: 40.423153°
Long: 104.185047°

2017 Alum. Cap,
#38458, 1.2'
Below Ground
Lat: 40.423243°
Long: 104.165813°

1996 Alum. Cap,
#13895,
Flush W/ Ground
Lat: 40.408482°
Long: 104.185192°

Iron Pipe, Center
of 2-Track
Lat: 40.408609°
Long: 104.165999°

S89°06'55"W - 5357.12' (Meas.)

GROTHER 5-61 11B-14-23-5
Elev. Ungraded Ground = 4684.5'

S88°58'00"W - 5346.76' (Meas.)

4816'

Beg. Prod. Interval

14

S89°13'33"W - 5337.44' (Meas.)

2011 Alum. Cap,
#37897,
Flush W/ Ground
Lat: 40.393935°
Long: 104.185300°

2011 Alum. Cap,
0.4' High
Lat: 40.393996°
Long: 104.166144°

2011 Alum. Cap,
#37897,
Flush W/ Ground
Lat: 40.386661°
Long: 104.185357°

23

2011 Alum. Cap,
#37897,
Flush W/ Ground
Lat: 40.386661°
Long: 104.185357°

S00°11'41"E
9725.79'

See Detail "A"
@ Above Right

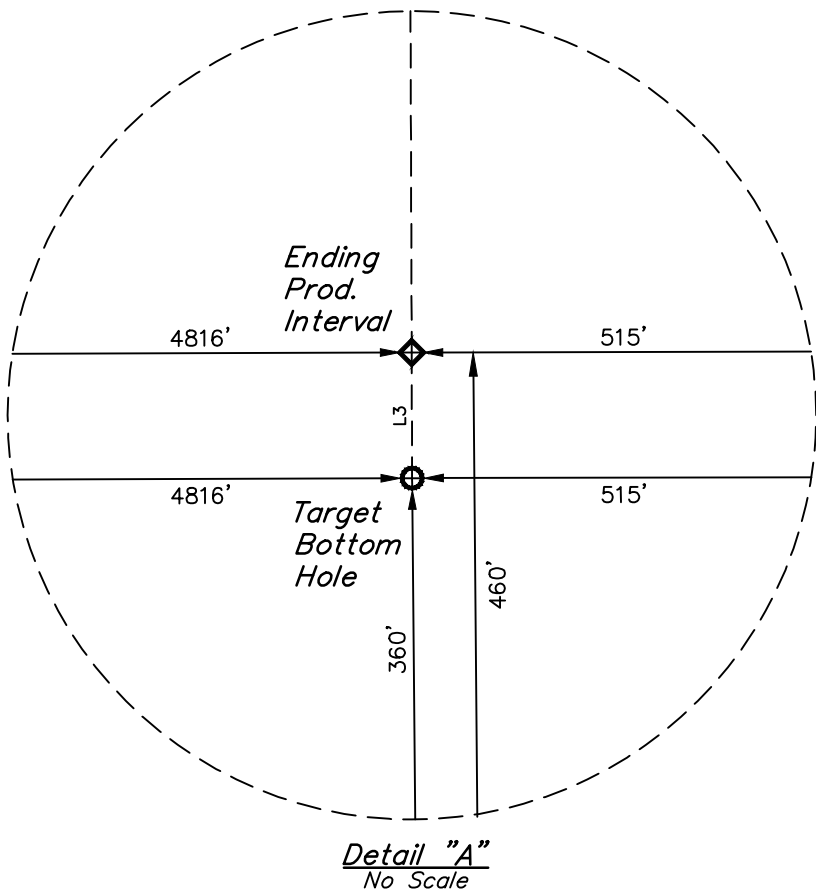
4816'

4816'

2011 Alum. Cap,
#37897, 0.4'
Below Ground
Lat: 40.379387°
Long: 104.185414°

S89°28'42"W - 5330.81' (Meas.)

2011 Alum. Cap,
#37897, 0.3' High
Lat: 40.379384°
Long: 104.166285°



PDOP = 1.4



SURFACE LOCATION 610' FSL 1157' FEL	BEG. PROD. INTERVAL 460' FNL 4816' FWL 529' FEL	ENDING PROD. INTERVAL 460' FSL 4816' FWL 515' FEL	TARGET BOTTOM HOLE 360' FSL 4816' FWL 515' FEL
NAD 83 (SURFACE LOCATION) LATITUDE = 40°24'36.92" (40.410256°) LONGITUDE = 104°10'12.47" (104.170130°)	NAD 83 (BEG. PROD. INTERVAL) LATITUDE = 40°24'26.40" (40.407335°) LONGITUDE = 104°10'04.48" (104.167912°)	NAD 83 (ENDING PROD. INTERVAL) LATITUDE = 40°22'50.33" (40.380646°) LONGITUDE = 104°10'05.24" (104.168122°)	NAD 83 (TARGET BOTTOM HOLE) LATITUDE = 40°22'49.34" (40.380372°) LONGITUDE = 104°10'05.25" (104.168124°)
NAD 27 (SURFACE LOCATION) LATITUDE = 40°24'36.98" (40.410273°) LONGITUDE = 104°10'10.65" (104.169625°)	NAD 27 (BEG. PROD. INTERVAL) LATITUDE = 40°24'26.47" (40.407351°) LONGITUDE = 104°10'02.66" (104.167406°)	NAD 27 (ENDING PROD. INTERVAL) LATITUDE = 40°22'50.39" (40.380664°) LONGITUDE = 104°10'03.42" (104.167616°)	NAD 27 (TARGET BOTTOM HOLE) LATITUDE = 40°22'49.40" (40.380389°) LONGITUDE = 104°10'03.43" (104.167618°)
STATE PLANE NAD 83 (CO. NORTH) N: 1395073.59' E: 3370312.52'	STATE PLANE NAD 83 (CO. NORTH) N: 1394018.61' E: 3370946.14'	STATE PLANE NAD 83 (CO. NORTH) N: 1384296.43' E: 3371033.73'	STATE PLANE NAD 83 (CO. NORTH) N: 1384196.46' E: 3371034.62'
STATE PLANE NAD 27 (CO. NORTH) N: 395074.89' E: 2370463.11'	STATE PLANE NAD 27 (CO. NORTH) N: 394019.93' E: 2371096.76'	STATE PLANE NAD 27 (CO. NORTH) N: 384298.09' E: 2371184.40'	STATE PLANE NAD 27 (CO. NORTH) N: 384198.13' E: 2371185.29'

BASIS OF BEARINGS
TRANSVERSE MERCATOR PROJECTION WITH
A CENTRAL MERIDIAN OF W105°00'00".

BASIS OF ELEVATION
OPUS SOLUTION GENERATED NAVD 88

UELS, LLC
Corporate Office * 85 South 200 East
Vernal, UT 84078 * (435) 789-1017



REV: 1 02-27-19 C/VIE (SURFACE LOCATION MOVE)

BISON OIL & GAS II

GROTHER 5-61 11B-14-23-5
SE 1/4 SE 1/4, SECTION 11, T5N, R61W, 6th P.M.
WELD COUNTY, COLORADO

SURVEYED BY	RYAN WILLIAMS, O.R.	02-18-19	SCALE
DRAWN BY	K.B.	02-19-19	1" = 1000'

WELL LOCATION PLAT

CERTIFICATION
THIS IS TO CERTIFY THAT THE ABOVE SURVEY WAS PREPARED BY ME, AND THAT THE SAME ARE TRUE AND CORRECT TO THE BEST OF MY KNOWLEDGE AND BELIEF.

REGISTERED LAND SURVEYOR
REGISTRATION NO. 28285
STATE OF COLORADO
02-27-19