

LEGEND:

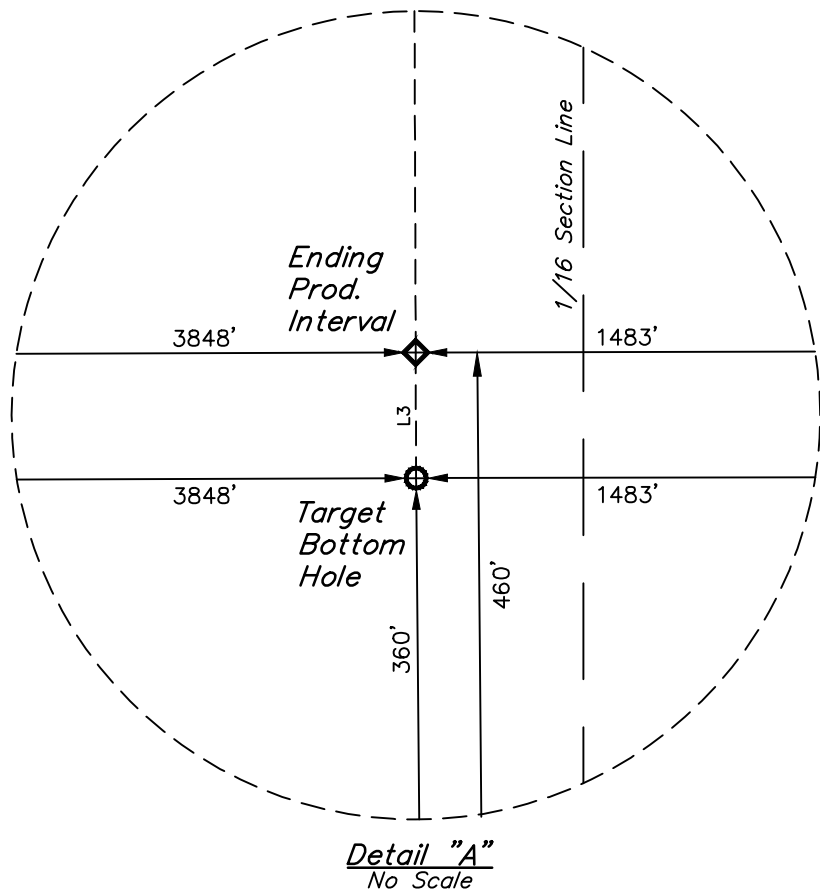
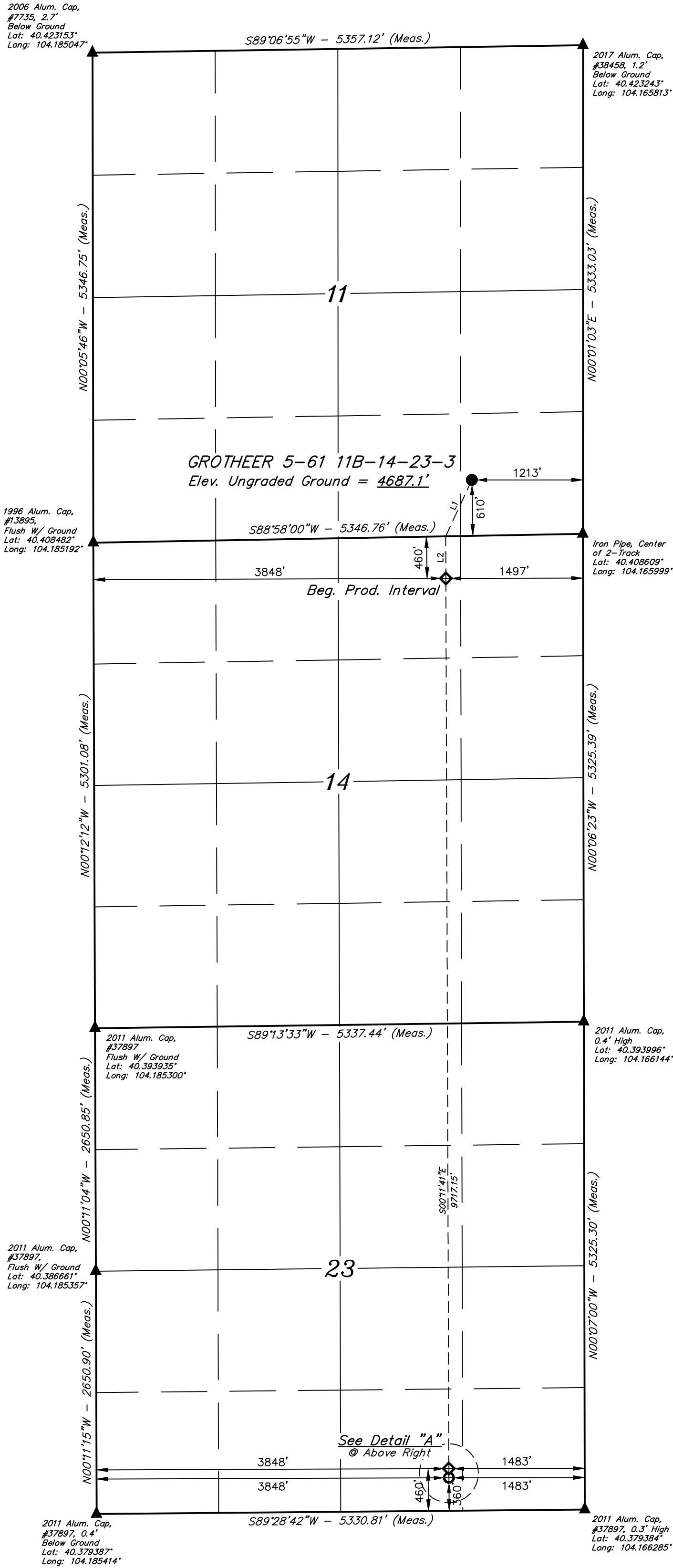
- = PROPOSED WELLHEAD.
○ = TARGET BOTTOM HOLE.
◆ = PRODUCTION INTERVAL.
▲ = SECTION CORNERS LOCATED. (NAD 83)

NOTE:

Distances referenced on plat to section lines are perpendicular.

T5N, R61W, 6th P.M.

LINE TABLE		
LINE	DIRECTION	LENGTH
L1	S24°54'05"W	678.32'
L2	S00°11'41"E	460.05'
L3	S00°11'15"E	100.00'



PDOP = 1.4



SURFACE LOCATION 610' FSL 1213' FEL	BEG. PROD. INTERVAL 460' FNL 3848' FWL 1497' FEL	ENDING PROD. INTERVAL 460' FSL 3848' FWL 1483' FEL	TARGET BOTTOM HOLE 360' FSL 3848' FWL 1483' FEL
NAD 83 (SURFACE LOCATION) LATITUDE = 40°24'36.92" (40.410255°) LONGITUDE = 104°10'13.19" (104.170332°)	NAD 83 (BEG. PROD. INTERVAL) LATITUDE = 40°24'26.32" (40.407312°) LONGITUDE = 104°10'16.99" (104.171387°)	NAD 83 (ENDING PROD. INTERVAL) LATITUDE = 40°22'50.33" (40.380647°) LONGITUDE = 104°10'17.74" (104.171596°)	NAD 83 (TARGET BOTTOM HOLE) LATITUDE = 40°22'49.34" (40.380373°) LONGITUDE = 104°10'17.75" (104.171598°)
NAD 27 (SURFACE LOCATION) LATITUDE = 40°24'36.98" (40.410272°) LONGITUDE = 104°10'11.37" (104.169826°)	NAD 27 (BEG. PROD. INTERVAL) LATITUDE = 40°24'26.38" (40.407329°) LONGITUDE = 104°10'15.17" (104.170881°)	NAD 27 (ENDING PROD. INTERVAL) LATITUDE = 40°22'50.39" (40.380665°) LONGITUDE = 104°10'15.92" (104.171090°)	NAD 27 (TARGET BOTTOM HOLE) LATITUDE = 40°22'49.40" (40.380390°) LONGITUDE = 104°10'15.93" (104.171092°)
STATE PLANE NAD 83 (CO. NORTH) N: 1395072.25' E: 3370256.55'	STATE PLANE NAD 83 (CO. NORTH) N: 1393995.73' E: 3369978.63'	STATE PLANE NAD 83 (CO. NORTH) N: 1384282.19' E: 3370066.14'	STATE PLANE NAD 83 (CO. NORTH) N: 1384182.22' E: 3370067.03'
STATE PLANE NAD 27 (CO. NORTH) N: 395073.54' E: 2370407.15'	STATE PLANE NAD 27 (CO. NORTH) N: 393997.06' E: 2370129.22'	STATE PLANE NAD 27 (CO. NORTH) N: 384283.85' E: 2370216.78'	STATE PLANE NAD 27 (CO. NORTH) N: 384183.89' E: 2370217.67'

BASIS OF BEARINGS
TRANSVERSE MERCATOR PROJECTION WITH
A CENTRAL MERIDIAN OF W105°00'00".

BASIS OF ELEVATION
OPUS SOLUTION GENERATED NAVD 88

UELS, LLC
Corporate Office * 85 South 200 East
Vernal, UT 84078 * (435) 789-1017



REV: 1 02-27-19 CJVIE (SURFACE LOCATION MOVE)

BISON OIL & GAS II

GROTHEER 5-61 11B-14-23-3
SE 1/4 SE 1/4, SECTION 11, T5N, R61W, 6th P.M.
WELD COUNTY, COLORADO

SURVEYED BY	RYAN WILLIAMS, O.R.	02-18-19	SCALE
DRAWN BY	K.B.	02-19-19	1" = 1000'

WELL LOCATION PLAT

CERTIFICATE OF REGISTRATION
THIS IS TO CERTIFY THAT THE ABOVE SURVEY WAS PREPARED BY ME, A LICENSED SURVEYOR, AND THAT THE SAME ARE TRUE AND CORRECT TO THE BEST OF MY KNOWLEDGE AND BELIEF.

