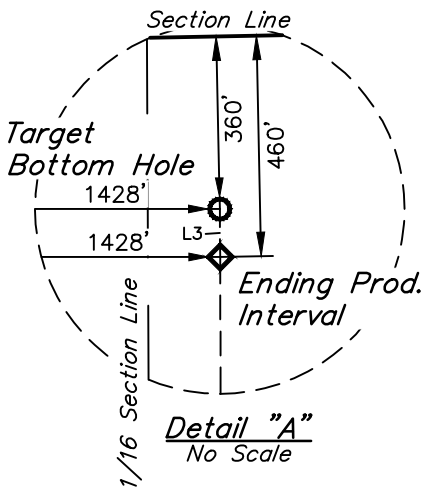


LEGEND:

- = PROPOSED WELLHEAD.
- ◆ = PRODUCTION INTERVAL.
- = TARGET BOTTOM HOLE.
- ▲ = SECTION CORNERS LOCATED. (NAD 83)

NOTE:
Distances referenced on plat to section lines are perpendicular.



| LINE TABLE | | |
|------------|-------------|---------|
| LINE | DIRECTION | LENGTH |
| L1 | S28°38'24"E | 519.10' |
| L2 | N06°27'41"W | 462.07' |
| L3 | N00°21'43"W | 100.01' |

| |
|---|
| SURFACE LOCATION 460' FSL 1181' FWL |
| NAD 83 (SURFACE LOCATION) LATITUDE = 40°24'35.18" (40.409773°) LONGITUDE = 104°10'51.38" (104.180940°) |
| NAD 27 (SURFACE LOCATION) LATITUDE = 40°24'35.24" (40.409790°) LONGITUDE = 104°10'49.56" (104.180434°) |
| STATE PLANE NAD 83 (CO. NORTH) N: 1394852.47' E: 3367305.47' |
| STATE PLANE NAD 27 (CO. NORTH) N: 394853.79' E: 2367455.98' |

1996 Alum. Cap,
#13895,
Flush W/ Ground
Lat: 40.408482°
Long: 104.185192°

PDOP = 1.5



| BEG. PROD. INTERVAL 460' FSL 1378' FWL | ENDING PROD. INTERVAL 460' FNL 1428' FWL | TARGET BOTTOM HOLE 360' FNL 1428' FWL |
|--|--|---|
| NAD 83 (BEG. PROD. INTERVAL) LATITUDE = 40°24'35.20" (40.409777°) LONGITUDE = 104°10'48.84" (104.180233°) | NAD 83 (ENDING PROD. INTERVAL) LATITUDE = 40°26'11.10" (40.436417°) LONGITUDE = 104°10'47.53" (104.179868°) | NAD 83 (TARGET BOTTOM HOLE) LATITUDE = 40°26'12.09" (40.436692°) LONGITUDE = 104°10'47.52" (104.179867°) |
| NAD 27 (BEG. PROD. INTERVAL) LATITUDE = 40°24'35.26" (40.409794°) LONGITUDE = 104°10'47.02" (104.179727°) | NAD 27 (ENDING PROD. INTERVAL) LATITUDE = 40°26'11.16" (40.436434°) LONGITUDE = 104°10'45.71" (104.179363°) | NAD 27 (TARGET BOTTOM HOLE) LATITUDE = 40°26'12.15" (40.436708°) LONGITUDE = 104°10'45.70" (104.179362°) |
| STATE PLANE NAD 83 (CO. NORTH) N: 1394857.12' E: 3367502.19' | STATE PLANE NAD 83 (CO. NORTH) N: 1404562.49' E: 3367459.22' | STATE PLANE NAD 83 (CO. NORTH) N: 1404662.47' E: 3367458.03' |
| STATE PLANE NAD 27 (CO. NORTH) N: 394858.44' E: 2367652.71' | STATE PLANE NAD 27 (CO. NORTH) N: 404563.49' E: 2367609.68' | STATE PLANE NAD 27 (CO. NORTH) N: 404663.46' E: 2367608.49' |

BASIS OF BEARINGS
TRANSVERSE MERCATOR PROJECTION WITH
A CENTRAL MERIDIAN OF W105°00'00".

BASIS OF ELEVATION
OPUS SOLUTION GENERATED NAVD 88

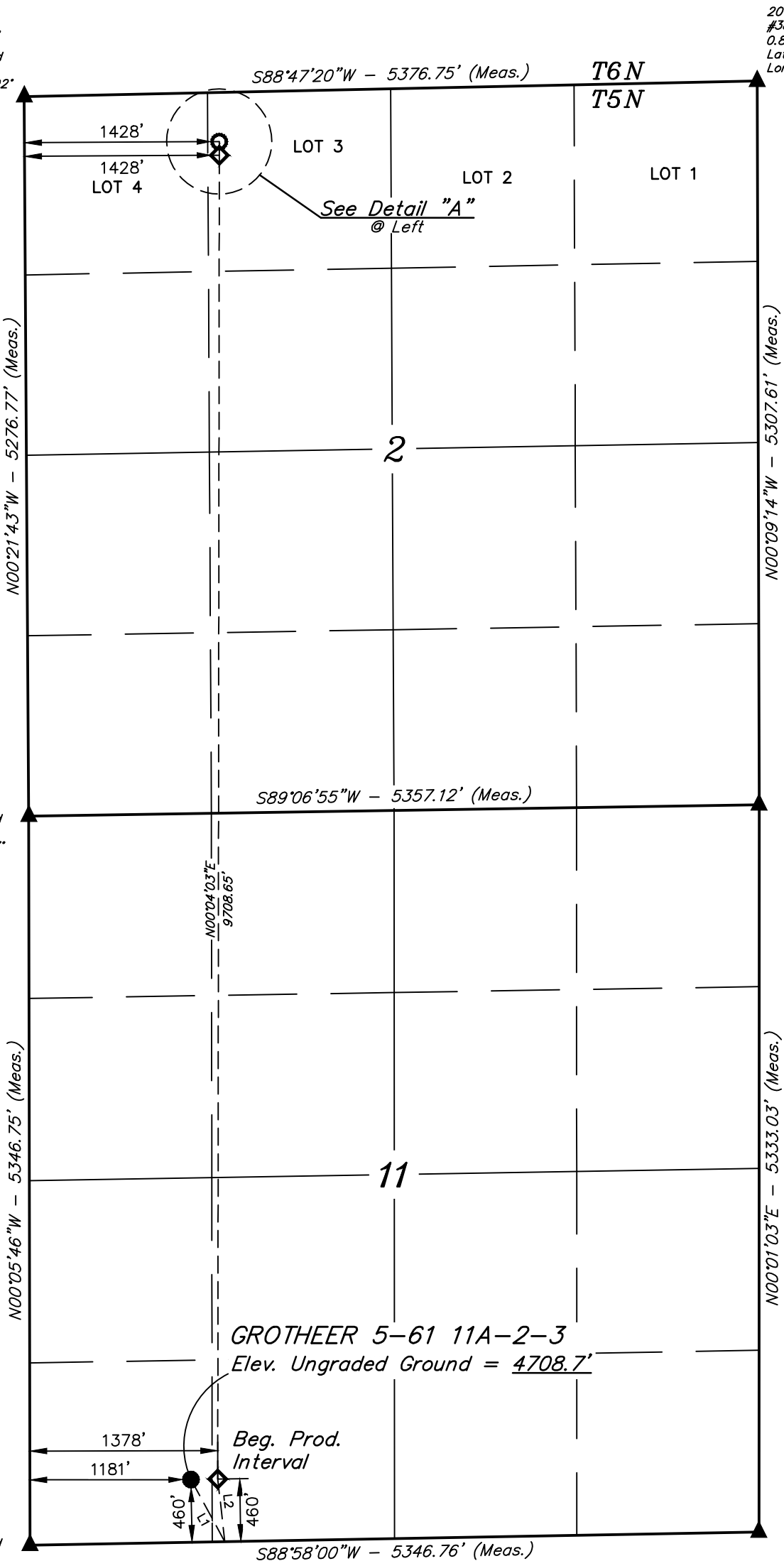


UELS, LLC
Corporate Office * 85 South 200 East
Vernal, UT 84078 * (435) 789-1017



T5N, R61W, 6th P.M.

2006 Alum. Cap,
#7735,
Flush W/ Ground
Lat: 40.437633°
Long: 104.184992°



2012 Alum. Cap,
#38307,
0.8' Below Ground
Lat: 40.437807°
Long: 104.165684°

2006 Alum. Cap,
#7735,
2.7' Below Ground
Lat: 40.423153°
Long: 104.185047°

2017 Alum. Cap,
#38458,
1.2' Below Ground
Lat: 40.423243°
Long: 104.165813°

Iron Pipe, Center
of 2-Track
Lat: 40.408609°
Long: 104.165999°

CERTIFICATE OF SURVEY
THIS IS TO CERTIFY THAT THE ABOVE PLAT WAS PREPARED FROM FIELD
NOTES OF ACTUAL SURVEYS MADE BY ME OR UNDER MY SUPERVISION
AND THAT THE SAME ARE TRUE AND CORRECT TO THE BEST OF MY
KNOWLEDGE AND BELIEF.

REGISTERED LAND SURVEYOR
REGISTRATION NO. 28285
STATE OF COLORADO
02-27-19

REV: 1 02-27-19 C.IVIE (SL & BPI MOVE)

BISON OIL & GAS II

GROTHER 5-61 11A-2-3
SW 1/4 SW 1/4, SECTION 11, T5N, R61W, 6th P.M.
WELD COUNTY, COLORADO

| | | | |
|-------------|----------------------|----------|------------|
| SURVEYED BY | ALLEN SHAFFETT, C.M. | 02-18-19 | SCALE |
| DRAWN BY | C.IVIE | 02-19-19 | 1" = 1000' |

WELL LOCATION PLAT