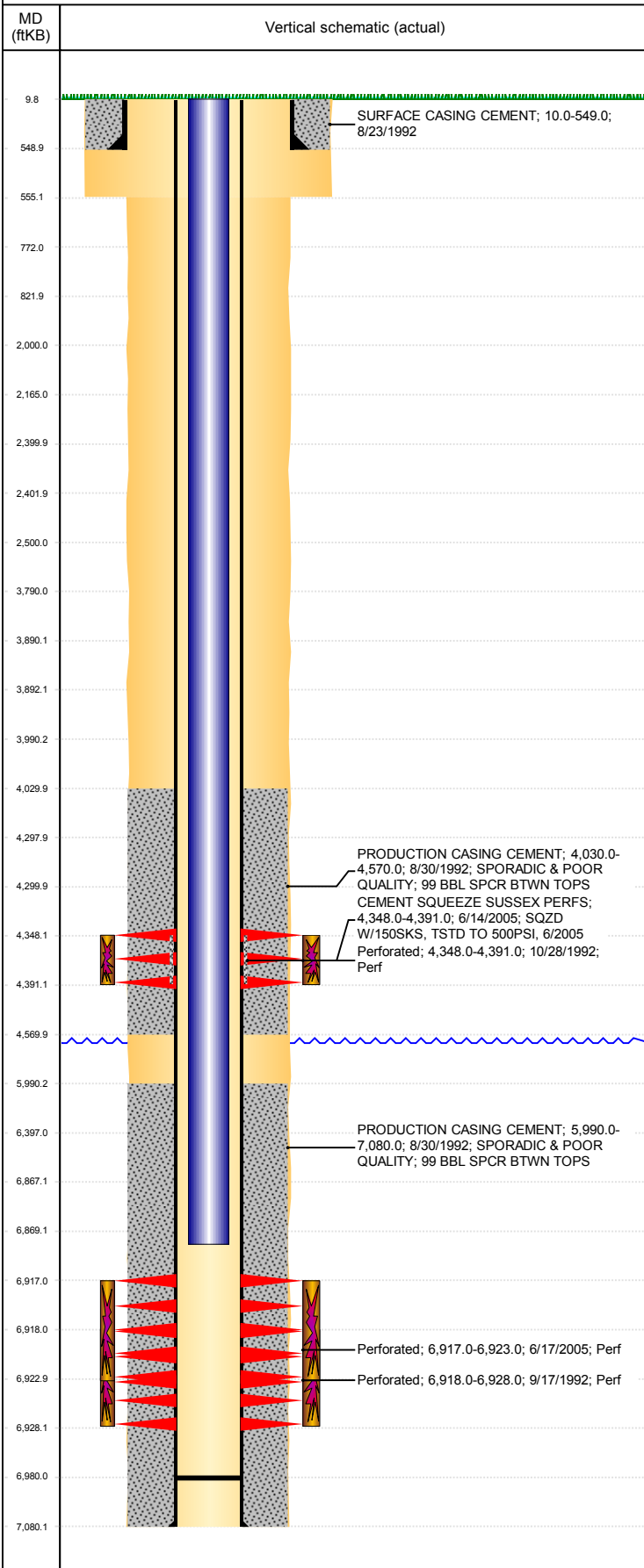


**Well Name: SPIKE STATE D14-15**

VERTICAL, ORIGINAL HOLE, 3/8/2019 9:36:48 AM



Well Header									
API 05-123-16035		Business Unit DJ BASIN			District 15		Well Config VERTICAL		
KB - GL / MSL (ft... 10.00		Spud Date 8/23/1992		P & A Date		Well Production Status SI			SoRT No
Comment									
Surface Location (Congressional)									
Qtr 3 SW	Qtr 4 SE	Section 14	Twonshp 3	Twonsh.... N	Range 64	Rng E/... W	Actual Latitude (°) 40.21975687	Actual Longitude (°) -104.51563671	
Wellbore Sections									
Section Des			Size (in)			Act Top, MD (ftKB)		Act Btm, MD (ftKB)	
SURFACE			12 1/4			10		555	
PRODUCTION			7 7/8			555		7,080	
Casing Strings									
Csg Des			Run Date		OD (in)	Wt/Len (lb/ft)	Grade	Top, MD (ftKB)	MD (ftKB)
Surface Casing			8/23/1992		8 5/8	24.00		10.0	549.0
Production			8/30/1992		3 1/2	9.30		10.0	7,080.0
Cement									
Des					Start Date		Top (ftKB)		Btm (ftKB)
SURFACE CASING CEMENT					8/23/1992		10.0		549.0
PRODUCTION CASING CEMENT					8/30/1992		4,030.0		4,570.0
PRODUCTION CASING CEMENT					8/30/1992		5,990.0		7,080.0
CEMENT SQUEEZE SUSSEX PERFS					6/14/2005		4,348.0		4,391.0
Zone Statuses									
Zone Name		Status Date	Status	Fluid Type	Job			Prod Method	
SUSSEX		3/29/1993	PR	Water	DRILLING/COMPLETION - ORIGINAL, 8/23/1992...			Flowing	
SUSSEX		6/14/2005	PR		RE-FRAC, 6/9/2005 00:00				
CODELL		4/6/2010	PR						
CODELL		9/22/2016	SI						
NIOBRARA		4/6/2010	PR	Water				Flowing	
Perforation Data									
Linked Zone			Bnch/Stg	Entered Shot Total	Top (ftKB)		Btm (ftKB)		Date
SUSSEX, ORIGINAL HOLE				30	4,348.00		4,391.00		10/28/1992
CODELL, ORIGINAL HOLE				24	6,917.00		6,923.00		6/17/2005
CODELL, ORIGINAL HOLE				40	6,918.00		6,928.00		9/17/1992
Stimulation Intervals									
Zone				Start Date		Top (ftKB)		Btm (ftKB)	
SUSSEX, ORIGINAL HOLE				10/28/1992		4,348.0		4,391.0	
CODELL, ORIGINAL HOLE				6/29/2005		6,917.0		6,923.0	
CODELL, ORIGINAL HOLE				9/17/1992		6,918.0		6,928.0	
Other In Hole									
Run Date		Des				OD (in)	Top (ftKB)		Btm (ftKB)
Logs									
Date		Type				Top, MD (ftKB)		Btm, MD (ftKB)	
8/27/1992		HYDROCARBON LOGGING				4,200.0		4,500.0	
9/17/1992		CEMENT BOND				3,900.0		6,963.0	
3/15/2009		COMPENSATED DENSITY				4,000.0		7,043.0	
3/15/2009		DUAL INDUCTION				3,810.0		4,650.0	
8/22/2017		GYRO				0.0		6,800.0	
Plug Back Total Depths									
Date		Type		Com				Depth (ftKB)	
6/30/2005		FILL		C/O & LANDED TBG				6,970.0	
8/16/2011		FILL						6,980.0	