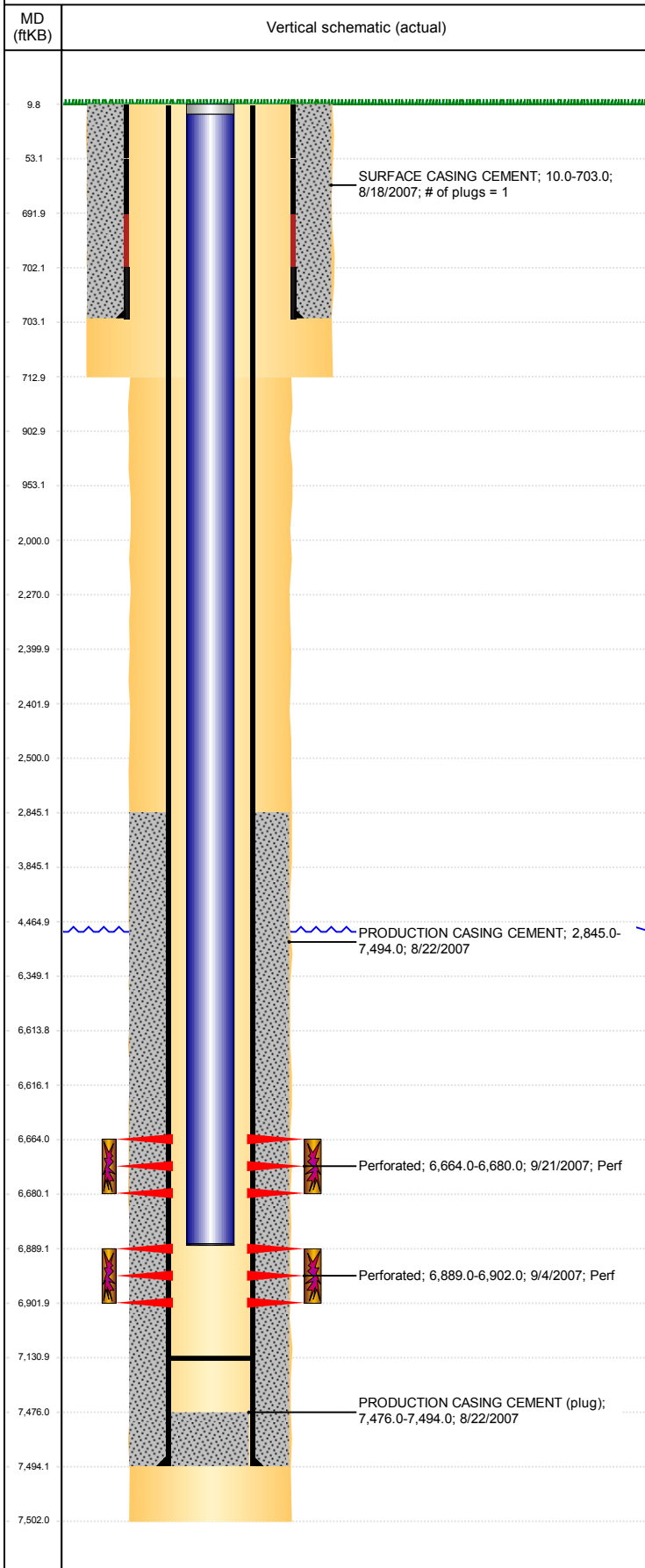


**Well Name: SPIKE D14-16**

VERTICAL, ORIGINAL HOLE, 3/8/2019 9:24:00 AM



Well Header									
API 05-123-25091		Business Unit DJ BASIN			District 15		Well Config VERTICAL		
KB - GL / MSL (ft... 10.00		Spud Date 8/17/2007		P & A Date		Well Production Status SI		SoRT No	
Comment									
Surface Location (Congressional)									
Qtr 3 SE	Qtr 4 SE	Section 14	Twnshp 3	Twنش... N	Range 64	Rng E/... W	Actual Latitude (°) 40.21939905	Actual Longitude (°) -104.51086335	
Wellbore Sections									
Section Des			Size (in)			Act Top, MD (ftKB)		Act Btm, MD (ftKB)	
SURFACE			12 1/4			10		713	
PRODUCTION			7 7/8			713		7,502	
Casing Strings									
Csg Des			Run Date		OD (in)	Wt/Len (lb/ft)	Grade	Top, MD (ftKB)	MD (ftKB)
SURFACE CASING			8/18/2007		8 5/8	24.00	J-55	10.0	703.0
PRODUCTION CASING			8/21/2007		4 1/2	11.60	N-80	10.0	7,494.0
Cement									
Des					Start Date		Top (ftKB)		Btm (ftKB)
SURFACE CASING CEMENT					8/18/2007		10.0		703.0
PRODUCTION CASING CEMENT					8/22/2007		2,845.0		7,494.0
Zone Statuses									
Zone Name	Status Date	Status	Fluid Type	Job				Prod Method	
CODELL	11/30/2007	PR	Water Water	DRILLING/COMPLETION - ORIGINAL, 8/17/2007...				Flowing Flowing	
CODELL	4/5/2010	PR							
NIOBRARA	4/5/2010	PR							
NIOBRARA	9/22/2016	SI							
Perforation Data									
Linked Zone			Bnch/Stg	Entered Shot Total	Top (ftKB)		Btm (ftKB)		Date
NIOBRARA, ORIGINAL HOLE				64	6,664.00		6,680.00		9/21/2007
CODELL, ORIGINAL HOLE				52	6,889.00		6,902.00		9/4/2007
Stimulation Intervals									
Zone				Start Date		Top (ftKB)		Btm (ftKB)	
NIOBRARA, ORIGINAL HOLE				9/21/2007		6,664.0		6,680.0	
CODELL, ORIGINAL HOLE				9/21/2007		6,889.0		6,902.0	
Other In Hole									
Run Date		Des				OD (in)	Top (ftKB)		Btm (ftKB)
Logs									
Date		Type				Top, MD (ftKB)		Btm, MD (ftKB)	
8/21/2007		DIFL/DENS/GR/GRD/CAL				703.0		7,502.0	
8/31/2007		CBL/CCL/GR				2,710.0		7,469.0	
9/6/2017		GYRO				0.0		6,800.0	
Plug Back Total Depths									
Date		Type		Com				Depth (ftKB)	
8/31/2007				DEPTH-LOGGER/CBL				7,476.0	
1/24/2008		PLUG		PLUG				7,131.0	