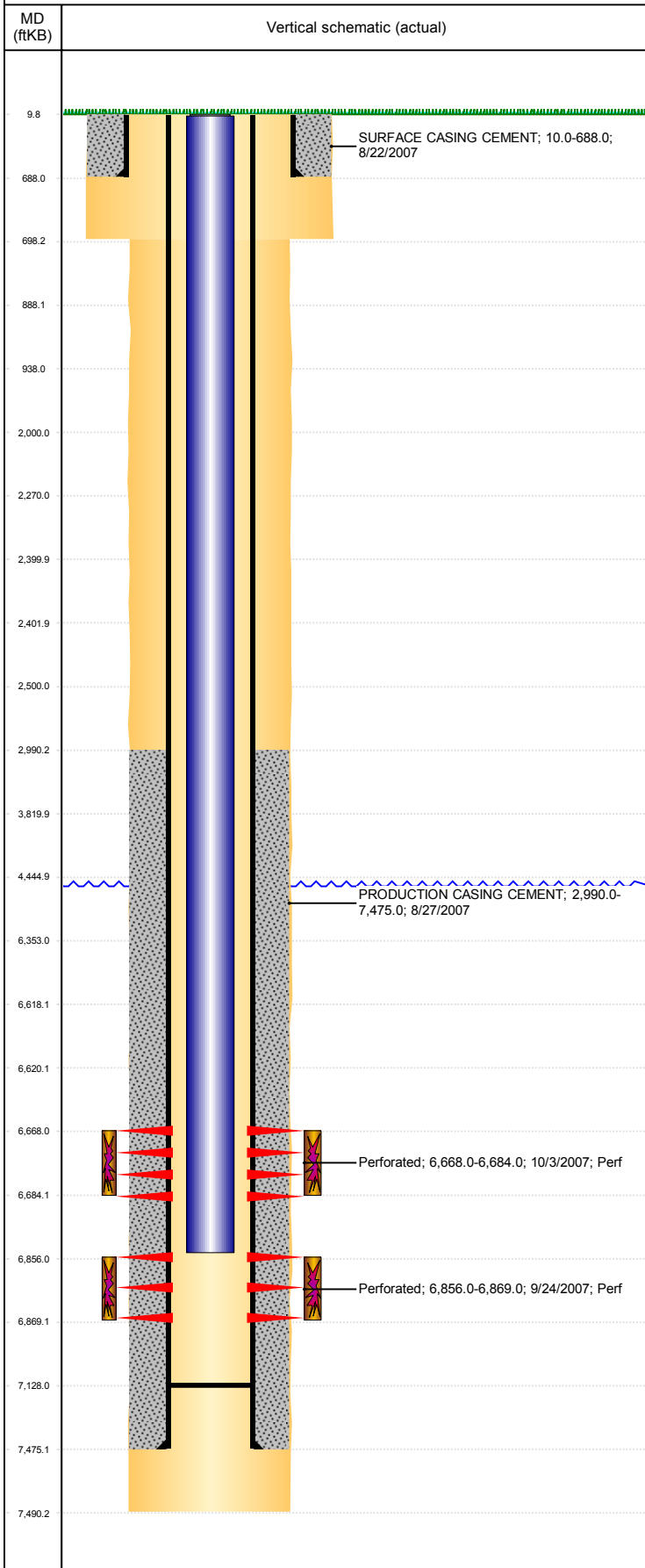


Well Name: SPIKE D14-09

VERTICAL, ORIGINAL HOLE, 3/8/2019 9:19:11 AM



Well Header									
API 05-123-25088		Business Unit DJ BASIN			District 15		Well Config VERTICAL		
KB - GL / MSL (ft... 10.00		Spud Date 8/22/2007		P & A Date		Well Production Status SI			SoRT No
Comment									
Surface Location (Congressional)									
Qtr 3 NE	Qtr 4 SE	Section 14	Twonshp 3	Twonsh... N	Range 64	Rng E/... W	Actual Latitude (°) 40.22387891	Actual Longitude (°) -104.51079501	
Wellbore Sections									
Section Des			Size (in)			Act Top, MD (ftKB)		Act Btm, MD (ftKB)	
SURFACE			12 1/4			10		698	
PRODUCTION			7 7/8			698		7,490	
Casing Strings									
Csg Des			Run Date		OD (in)	Wt/Len (lb/ft)	Grade	Top, MD (ftKB)	MD (ftKB)
Surface Casing			8/22/2007		8 5/8	24.00	J-55	10.0	688.0
Production			8/27/2007		4 1/2	11.60	N-80	10.0	7,475.0
Cement									
Des					Start Date		Top (ftKB)		Btm (ftKB)
SURFACE CASING CEMENT					8/22/2007		10.0		688.0
PRODUCTION CASING CEMENT					8/27/2007		2,990.0		7,475.0
Zone Statuses									
Zone Name	Status Date	Status	Fluid Type	Job				Prod Method	
CODELL	11/30/2007	PR	Water	DRILLING/COMPLETION - ORIGINAL, 8/22/2007 ...				Flowing	
CODELL	4/5/2010	PR							
NIOBRARA	4/5/2010	PR							
NIOBRARA	9/22/2016	SI							
Perforation Data									
Linked Zone			Bnch/Stg	Entered Shot Total	Top (ftKB)		Btm (ftKB)		Date
NIOBRARA, ORIGINAL HOLE				64	6,668.00		6,684.00		10/3/2007
CODELL, ORIGINAL HOLE				52	6,856.00		6,869.00		9/24/2007
Stimulation Intervals									
Zone					Start Date		Top (ftKB)		Btm (ftKB)
NIOBRARA, ORIGINAL HOLE					10/3/2007		6,668.0		6,684.0
CODELL, ORIGINAL HOLE					10/3/2007		6,856.0		6,869.0
Other In Hole									
Run Date		Des				OD (in)	Top (ftKB)		Btm (ftKB)
Logs									
Date		Type					Top, MD (ftKB)		Btm, MD (ftKB)
8/27/2007		DIFL/DENS/GR/GRD/CAL					688.0		7,482.0
9/20/2007		Cement Bond					2,870.0		7,406.0
9/5/2017		GYRO					0.0		6,750.0
Plug Back Total Depths									
Date		Type			Com				Depth (ftKB)
7/20/2007					DEPTH-LOGGER/CBL				7,413.0
1/28/2008		PLUG			DRILL THE PLUG FREE AND PUSH TO 7128'				7,128.0