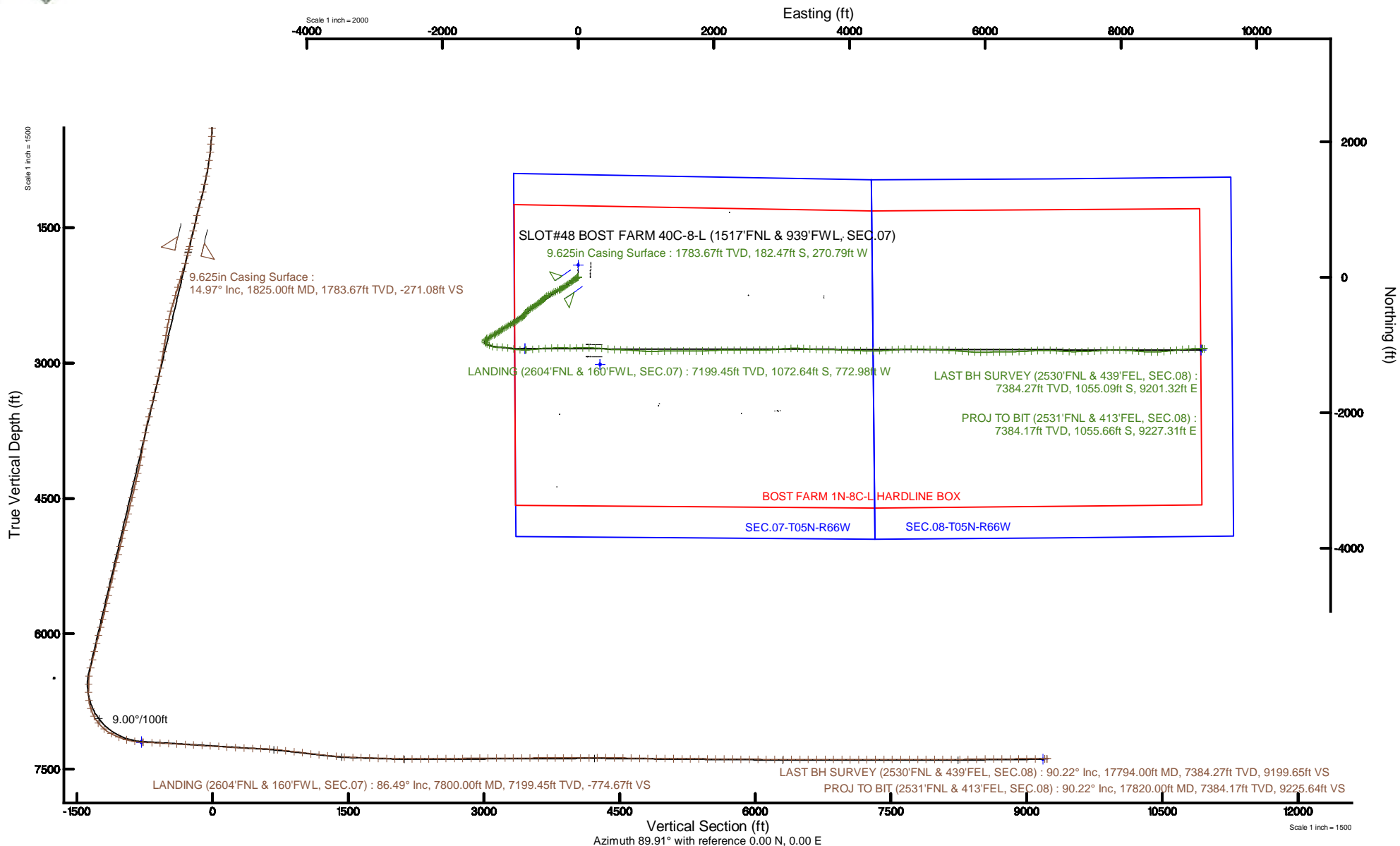


# SRC ENERGY

Location: COLORADO Slot: SLOT#48 BOST FARM 40C-8-L (1517'FNL & 939'FWL, SEC.07)  
Field: WELD COUNTY (NAD83,TRUE NORTH) Well: BOST FARM 40C-8-L  
Facility: SEC.07-T05N-R66W Wellbore: BOST FARM 40C-8-L PWB

Plot reference wellpath is BOST FARM 40C-8-L (REV-B.0) PWP	Grid System: NAD83 / Lambert Colorado SP, Northern Zone (501), US feet
True vertical depths are referenced to PRECISION 462 (20') (RKB)	North Reference: True north
Measured depths are referenced to PRECISION 462 (20') (RKB)	Scale: True distance
PRECISION 462 (20') (RKB) to Mean Sea Level: 4900 feet	Depths are in feet
Mean Sea Level to Mud line (At Slot: SLOT#48 BOST FARM 40C-8-L (1517'FNL & 939'FWL, SEC.07)): 0 feet	Created by: harisab on 2019-02-05
Coordinates are in feet referenced to Slot	Database: WellArchitectDB





# Actual Wellpath Report

## BOST FARM 40C-8-L AWP

Page 1 of 10



### REFERENCE WELLPATH IDENTIFICATION

Operator	SRC ENERGY	Slot	SLOT#48 BOST FARM 40C-8-L (1517'FNL & 939'FWL, SEC.07)
Area	COLORADO	Well	BOST FARM 40C-8-L
Field	WELD COUNTY (NAD83,TRUE NORTH)	Wellbore	BOST FARM 40C-8-L AWP
Facility	SEC.07-T05N-R66W		

### REPORT SETUP INFORMATION

Projection System	NAD83 / Lambert Colorado SP, Northern Zone (501), US feet	Software System	WellArchitect® 5.1
North Reference	True	User	Hanisab
Scale	0.999961	Report Generated	2/4/2019 at 11:46:24 PM
Convergence at slot	0.43° East	Database/Source file	WellArchitectDB/BOST_FARM_40C-8-L_AWP.xml

### WELLPATH LOCATION

	Local coordinates		Grid coordinates		Geographic coordinates	
	North[ft]	East[ft]	Easting[US ft]	Northing[US ft]	Latitude	Longitude
Slot Location	1288.56	-325.25	3186826.60	1395595.79	40°25'02.539"N	104°49'44.454"W
Facility Reference Pt			3187161.59	1394309.79	40°24'49.806"N	104°49'40.249"W
Field Reference Pt			3171284.48	1426358.81	40°30'07.643"N	104°53'02.634"W

### WELLPATH DATUM

Calculation method	Minimum curvature	PRECISION 462 (20') (RKB) to Facility Vertical Datum	4900.00ft
Horizontal Reference Pt	Slot	PRECISION 462 (20') (RKB) to Mean Sea Level	4900.00ft
Vertical Reference Pt	PRECISION 462 (20') (RKB)	PRECISION 462 (20') (RKB) to Mud Line at Slot (SLOT#48 BOST FARM 40C-8-L (1517'FNL & 939'FWL, SEC.07))	4900.00ft
MD Reference Pt	PRECISION 462 (20') (RKB)	Section Origin	N 0.00, E 0.00 ft
Field Vertical Reference	Mean Sea Level	Section Azimuth	89.91°



# Actual Wellpath Report

## BOST FARM 40C-8-L AWP

Page 2 of 10



### REFERENCE WELLPATH IDENTIFICATION

Operator	SRC ENERGY	Slot	SLOT#48 BOST FARM 40C-8-L (1517'FNL & 939'FWL, SEC.07)
Area	COLORADO	Well	BOST FARM 40C-8-L
Field	WELD COUNTY (NAD83,TRUE NORTH)	Wellbore	BOST FARM 40C-8-L AWP
Facility	SEC.07-T05N-R66W		

### WELLPATH DATA (196 stations) † = interpolated/extrapolated station

MD [ft]	Inclination [°]	Azimuth [°]	TVD [ft]	Vert Sect [ft]	North [ft]	East [ft]	DLS [°/100ft]	Comments
0.00†	0.000	343.910	0.00	0.00	0.00	0.00	0.00	
20.00	0.000	343.910	20.00	0.00	0.00	0.00	0.00	
137.00	0.070	343.910	137.00	-0.02	0.07	-0.02	0.06	
226.00	0.310	342.990	226.00	-0.10	0.35	-0.11	0.27	
309.00	0.680	277.070	309.00	-0.66	0.63	-0.66	0.75	
399.00	2.870	246.900	398.95	-3.26	-0.19	-3.26	2.56	
489.00	5.210	240.460	488.72	-8.90	-3.09	-8.89	2.64	
579.00	6.900	232.810	578.22	-16.77	-8.37	-16.75	2.08	
669.00	7.410	234.040	667.51	-25.78	-15.05	-25.76	0.59	
759.00	10.270	233.680	756.44	-36.96	-23.21	-36.92	3.18	
849.00	12.950	235.410	844.59	-51.74	-33.69	-51.69	3.00	
939.00	13.130	235.020	932.27	-68.44	-45.28	-68.37	0.22	
1029.00	14.950	233.430	1019.57	-86.16	-58.05	-86.07	2.07	
1119.00	18.190	233.990	1105.83	-106.88	-73.23	-106.76	3.60	
1209.00	17.170	233.580	1191.57	-128.96	-89.38	-128.82	1.14	
1299.00	16.400	233.990	1277.74	-149.95	-104.74	-149.78	0.87	
1389.00	16.210	236.160	1364.12	-170.68	-119.20	-170.49	0.71	
1479.00	16.050	237.910	1450.58	-191.68	-132.81	-191.47	0.57	
1569.00	15.780	236.930	1537.13	-212.49	-146.09	-212.27	0.42	
1659.00	15.880	237.500	1623.71	-233.16	-159.39	-232.90	0.21	
1749.00	15.630	238.030	1710.33	-253.85	-172.42	-253.57	0.32	
1781.00	15.180	239.400	1741.18	-261.12	-176.84	-260.84	1.81	
1851.00	14.850	242.940	1808.79	-277.01	-185.58	-276.72	1.39	
1945.00	18.430	246.480	1898.85	-301.38	-197.00	-301.08	3.96	
2038.00	18.850	245.910	1986.97	-328.60	-209.00	-328.27	0.49	
2131.00	18.880	243.470	2074.97	-355.80	-221.85	-355.45	0.85	
2225.00	18.900	240.970	2163.91	-382.74	-236.03	-382.37	0.86	
2317.00	18.860	240.430	2250.96	-408.72	-250.60	-408.33	0.19	
2409.00	18.840	240.650	2338.03	-434.63	-265.22	-434.21	0.08	
2502.00	18.780	239.560	2426.06	-460.64	-280.16	-460.20	0.38	



# Actual Wellpath Report

BOST FARM 40C-8-L AWP

Page 3 of 10



REFERENCE WELLPATH IDENTIFICATION			
Operator	SRC ENERGY	Slot	SLOT#48 BOST FARM 40C-8-L (1517'FNL & 939'FWL, SEC.07)
Area	COLORADO	Well	BOST FARM 40C-8-L
Field	WELD COUNTY (NAD83,TRUE NORTH)	Wellbore	BOST FARM 40C-8-L AWB
Facility	SEC.07-T05N-R66W		

WELLPATH DATA (196 stations)								
MD [ft]	Inclination [°]	Azimuth [°]	TVD [ft]	Vert Sect [ft]	North [ft]	East [ft]	DLS [°/100ft]	Comments
2594.00	14.170	230.200	2514.28	-482.10	-294.88	-481.64	5.77	
2689.00	12.960	225.690	2606.63	-498.68	-309.77	-498.20	1.69	
2781.00	12.820	225.670	2696.31	-513.39	-324.11	-512.88	0.15	
2873.00	12.870	226.010	2786.01	-528.08	-338.36	-527.55	0.10	
2966.00	12.800	229.670	2876.68	-543.41	-352.22	-542.86	0.88	
3060.00	12.730	229.630	2968.36	-559.26	-365.67	-558.69	0.08	
3153.00	15.220	232.510	3058.60	-576.78	-379.74	-576.18	2.78	
3245.00	15.680	233.120	3147.28	-596.33	-394.55	-595.71	0.53	
3338.00	15.790	233.310	3236.79	-616.55	-409.65	-615.91	0.13	
3431.00	15.770	236.370	3326.29	-637.24	-424.21	-636.58	0.89	
3523.00	15.270	237.940	3414.93	-657.94	-437.56	-657.25	0.71	
3617.00	15.990	243.290	3505.46	-680.02	-449.95	-679.31	1.71	
3711.00	16.020	241.890	3595.82	-703.04	-461.88	-702.32	0.41	
3804.00	16.210	232.680	3685.18	-724.71	-475.80	-723.96	2.75	
3896.00	16.040	220.230	3773.59	-743.16	-493.30	-742.39	3.76	
3989.00	16.030	216.310	3862.97	-759.10	-513.45	-758.29	1.16	
4083.00	16.170	215.910	3953.28	-774.49	-534.51	-773.66	0.19	
4175.00	15.970	216.050	4041.69	-789.49	-555.12	-788.62	0.22	
4269.00	15.940	223.800	4132.08	-806.06	-574.90	-805.16	2.26	
4362.00	16.020	231.450	4221.50	-824.97	-592.11	-824.04	2.26	
4456.00	15.960	240.180	4311.87	-846.35	-606.62	-845.40	2.56	
4550.00	15.970	239.510	4402.25	-868.73	-619.61	-867.75	0.20	
4645.00	15.900	235.690	4493.60	-890.76	-633.58	-889.77	1.11	
4738.00	16.100	234.950	4583.00	-911.86	-648.16	-910.84	0.31	
4831.00	15.810	238.960	4672.42	-933.30	-662.10	-932.26	1.23	
4926.00	15.980	241.640	4763.78	-955.91	-674.99	-954.85	0.79	
5018.00	15.810	241.220	4852.27	-978.06	-687.04	-976.98	0.22	
5112.00	15.790	238.390	4942.72	-1000.19	-699.91	-999.10	0.82	
5206.00	15.790	239.860	5033.17	-1022.17	-713.03	-1021.05	0.43	
5299.00	15.670	241.390	5122.69	-1044.16	-725.40	-1043.02	0.46	



# Actual Wellpath Report

BOST FARM 40C-8-L AWP

Page 4 of 10



## REFERENCE WELLPATH IDENTIFICATION

Operator	SRC ENERGY	Slot	SLOT#48 BOST FARM 40C-8-L (1517'FNL & 939'FWL, SEC.07)
Area	COLORADO	Well	BOST FARM 40C-8-L
Field	WELD COUNTY (NAD83,TRUE NORTH)	Wellbore	BOST FARM 40C-8-L AWB
Facility	SEC.07-T05N-R66W		

## WELLPATH DATA (196 stations) † = interpolated/extrapolated station

MD [ft]	Inclination [°]	Azimuth [°]	TVD [ft]	Vert Sect [ft]	North [ft]	East [ft]	DLS [°/100ft]	Comments
5393.00	15.920	241.550	5213.14	-1066.65	-737.62	-1065.50	0.27	
5488.00	16.050	238.260	5304.47	-1089.30	-750.73	-1088.12	0.96	
5581.00	15.480	237.670	5393.97	-1110.74	-764.13	-1109.54	0.64	
5674.00	15.990	233.320	5483.49	-1131.52	-778.42	-1130.30	1.38	
5766.00	16.180	233.090	5571.88	-1151.96	-793.69	-1150.71	0.22	
5859.00	15.750	234.720	5661.30	-1172.65	-808.76	-1171.38	0.67	
5952.00	15.880	237.970	5750.78	-1193.76	-822.80	-1192.47	0.96	
6045.00	15.930	240.400	5840.22	-1215.67	-835.85	-1214.35	0.72	
6137.00	15.860	240.670	5928.70	-1237.62	-848.25	-1236.29	0.11	
6231.00	15.660	240.820	6019.17	-1259.92	-860.73	-1258.57	0.22	
6324.00	15.570	243.940	6108.74	-1282.11	-872.33	-1280.74	0.91	
6417.00	15.990	242.330	6198.23	-1304.68	-883.76	-1303.29	0.65	
6510.00	15.480	239.350	6287.75	-1326.72	-896.04	-1325.32	1.03	
6602.00	15.950	239.550	6376.31	-1348.20	-908.70	-1346.78	0.51	
6694.00	10.810	213.010	6465.86	-1363.84	-922.36	-1362.40	8.57	
6787.00	8.850	183.840	6557.55	-1369.10	-936.83	-1367.63	5.68	
6880.00	11.030	188.780	6649.15	-1370.96	-952.76	-1369.47	2.51	
6973.00	14.110	143.220	6740.12	-1365.55	-970.68	-1364.03	10.84	
7066.00	19.510	117.700	6829.23	-1344.99	-987.01	-1343.45	9.70	
7159.00	29.300	116.600	6913.82	-1310.84	-1004.46	-1309.27	10.54	
7251.00	40.960	106.680	6989.00	-1261.65	-1023.27	-1260.04	14.08	
7343.00	50.060	91.670	7053.59	-1197.20	-1033.00	-1195.58	15.23	
7436.00	61.580	91.970	7105.75	-1120.44	-1035.46	-1118.81	12.39	
7530.00	68.540	100.540	7145.42	-1035.90	-1044.91	-1034.26	11.09	
7623.00	75.950	99.930	7173.76	-948.83	-1060.62	-947.16	7.99	
7717.00	82.410	93.260	7191.42	-857.22	-1071.16	-855.54	9.78	
7800.00†	86.487	88.812	7199.45	-774.67	-1072.64	-772.98	7.25	LANDING (2604'FNL & 160'FWL, SEC.07)
7810.00	86.980	88.280	7200.02	-764.69	-1072.39	-763.00	7.25	
7904.00	87.070	84.290	7204.90	-671.02	-1066.31	-669.35	4.24	
7998.00	86.640	84.260	7210.05	-577.61	-1056.94	-575.96	0.46	



# Actual Wellpath Report

BOST FARM 40C-8-L AWP

Page 5 of 10



## REFERENCE WELLPATH IDENTIFICATION

Operator	SRC ENERGY	Slot	SLOT#48 BOST FARM 40C-8-L (1517'FNL & 939'FWL, SEC.07)
Area	COLORADO	Well	BOST FARM 40C-8-L
Field	WELD COUNTY (NAD83,TRUE NORTH)	Wellbore	BOST FARM 40C-8-L AWP
Facility	SEC.07-T05N-R66W		

## WELLPATH DATA (196 stations)

MD [ft]	Inclination [°]	Azimuth [°]	TVD [ft]	Vert Sect [ft]	North [ft]	East [ft]	DLS [°/100ft]	Comments
8090.00	86.740	86.590	7215.37	-486.06	-1049.62	-484.41	2.53	
8182.00	86.800	88.440	7220.55	-394.29	-1045.63	-392.64	2.01	
8276.00	86.860	89.650	7225.75	-300.44	-1044.07	-298.80	1.29	
8368.00	86.860	90.820	7230.79	-208.58	-1044.45	-206.94	1.27	
8460.00	86.270	90.320	7236.30	-116.76	-1045.36	-115.11	0.84	
8553.00	86.430	88.290	7242.22	-23.95	-1044.23	-22.31	2.19	
8646.00	86.330	88.700	7248.09	68.83	-1041.80	70.47	0.45	
8739.00	86.300	91.450	7254.07	161.63	-1041.92	163.27	2.95	
8832.00	86.370	93.750	7260.02	254.33	-1046.13	255.97	2.47	
8926.00	86.980	95.480	7265.47	347.85	-1053.68	349.51	1.95	
9020.00	88.090	94.970	7269.51	441.36	-1062.23	443.03	1.30	
9113.00	88.550	92.310	7272.24	534.11	-1068.13	535.79	2.90	
9206.00	85.630	91.950	7276.96	626.91	-1071.58	628.60	3.16	
9299.00	83.430	92.100	7285.83	719.42	-1074.86	721.11	2.37	
9391.00	83.950	94.090	7295.94	810.72	-1079.79	812.42	2.22	
9484.00	82.940	94.420	7306.56	902.84	-1086.65	904.55	1.14	
9577.00	83.060	92.340	7317.89	994.98	-1092.09	996.69	2.22	
9670.00	82.840	89.720	7329.31	1087.25	-1093.75	1088.97	2.81	
9763.00	84.270	88.280	7339.75	1179.64	-1092.13	1181.36	2.18	
9856.00	84.170	88.080	7349.11	1272.13	-1089.20	1273.84	0.24	
9950.00	85.350	88.690	7357.70	1365.70	-1086.56	1367.41	1.41	
10043.00	85.940	90.520	7364.76	1458.43	-1085.92	1460.13	2.06	
10135.00	88.060	92.000	7369.57	1550.27	-1087.94	1551.98	2.81	
10229.00	88.280	90.550	7372.58	1644.19	-1090.03	1645.90	1.56	
10323.00	88.120	89.700	7375.53	1738.14	-1090.24	1739.86	0.92	
10416.00	88.250	87.970	7378.47	1831.07	-1088.35	1832.79	1.86	
10510.00	88.250	86.840	7381.35	1924.94	-1084.09	1926.64	1.20	
10604.00	88.120	87.760	7384.32	2018.79	-1079.67	2020.49	0.99	
10697.00	90.090	89.380	7385.78	2111.75	-1077.35	2113.44	2.74	
10790.00	89.750	89.920	7385.91	2204.75	-1076.78	2206.44	0.69	



# Actual Wellpath Report

BOST FARM 40C-8-L AWP

Page 6 of 10



## REFERENCE WELLPATH IDENTIFICATION

Operator	SRC ENERGY	Slot	SLOT#48 BOST FARM 40C-8-L (1517'FNL & 939'FWL, SEC.07)
Area	COLORADO	Well	BOST FARM 40C-8-L
Field	WELD COUNTY (NAD83,TRUE NORTH)	Wellbore	BOST FARM 40C-8-L AWP
Facility	SEC.07-T05N-R66W		

## WELLPATH DATA (196 stations)

MD [ft]	Inclination [°]	Azimuth [°]	TVD [ft]	Vert Sect [ft]	North [ft]	East [ft]	DLS [°/100ft]	Comments
10884.00	90.580	90.760	7385.63	2298.74	-1077.34	2300.44	1.26	
10978.00	90.430	90.020	7384.81	2392.74	-1077.98	2394.43	0.80	
11072.00	90.580	89.270	7383.98	2486.73	-1077.39	2488.43	0.81	
11166.00	90.520	89.150	7383.08	2580.72	-1076.10	2582.41	0.14	
11259.00	90.460	89.680	7382.28	2673.71	-1075.15	2675.40	0.57	
11352.00	90.800	89.370	7381.26	2766.70	-1074.38	2768.39	0.49	
11446.00	90.710	86.150	7380.02	2860.62	-1070.70	2862.30	3.43	
11539.00	90.740	85.000	7378.84	2953.34	-1063.53	2955.02	1.24	
11633.00	90.370	85.710	7377.93	3047.04	-1055.92	3048.70	0.85	
11725.00	90.370	88.370	7377.34	3138.91	-1051.17	3140.57	2.89	
11819.00	89.850	91.260	7377.16	3232.90	-1050.86	3234.56	3.12	
11911.00	90.370	93.620	7376.98	3324.81	-1054.78	3326.47	2.63	
12004.00	90.030	93.910	7376.66	3417.60	-1060.89	3419.27	0.48	
12097.00	90.340	92.490	7376.35	3510.44	-1066.08	3512.12	1.56	
12190.00	90.340	90.960	7375.80	3603.39	-1068.88	3605.07	1.65	
12283.00	90.400	90.180	7375.20	3696.38	-1069.80	3698.06	0.84	
12375.00	90.250	91.250	7374.68	3788.37	-1070.95	3790.05	1.17	
12467.00	89.880	91.880	7374.58	3880.33	-1073.46	3882.02	0.79	
12562.00	90.120	91.930	7374.58	3975.27	-1076.62	3976.97	0.26	
12656.00	90.060	92.630	7374.43	4069.19	-1080.36	4070.89	0.75	
12749.00	90.280	92.440	7374.15	4162.09	-1084.47	4163.80	0.31	
12842.00	90.580	90.930	7373.45	4255.04	-1087.21	4256.75	1.66	
12935.00	90.060	90.230	7372.94	4348.03	-1088.15	4349.75	0.94	
13028.00	89.420	87.850	7373.36	4441.01	-1086.59	4442.73	2.65	
13123.00	88.340	86.020	7375.21	4535.86	-1081.51	4537.57	2.24	
13216.00	88.180	84.540	7378.04	4628.51	-1073.87	4630.21	1.60	
13309.00	89.260	86.020	7380.12	4721.18	-1066.22	4722.86	1.97	
13402.00	89.420	88.220	7381.19	4814.06	-1061.54	4815.73	2.37	
13496.00	89.380	90.970	7382.17	4908.05	-1060.88	4909.72	2.93	
13590.00	89.600	91.220	7383.01	5002.02	-1062.67	5003.70	0.35	



# Actual Wellpath Report

## BOST FARM 40C-8-L AWP

Page 7 of 10



### REFERENCE WELLPATH IDENTIFICATION

Operator	SRC ENERGY	Slot	SLOT#48 BOST FARM 40C-8-L (1517'FNL & 939'FWL, SEC.07)
Area	COLORADO	Well	BOST FARM 40C-8-L
Field	WELD COUNTY (NAD83,TRUE NORTH)	Wellbore	BOST FARM 40C-8-L AWP
Facility	SEC.07-T05N-R66W		

### WELLPATH DATA (196 stations)

MD [ft]	Inclination [°]	Azimuth [°]	TVD [ft]	Vert Sect [ft]	North [ft]	East [ft]	DLS [°/100ft]	Comments
13684.00	89.660	91.410	7383.62	5095.99	-1064.83	5097.67	0.21	
13777.00	89.480	91.750	7384.31	5188.95	-1067.40	5190.63	0.41	
13870.00	89.600	92.100	7385.06	5281.89	-1070.52	5283.58	0.40	
13963.00	89.690	92.430	7385.64	5374.81	-1074.20	5376.50	0.37	
14057.00	89.600	93.290	7386.22	5468.68	-1078.89	5470.38	0.92	
14151.00	89.320	94.330	7387.10	5562.46	-1085.13	5564.17	1.15	
14245.00	89.480	94.130	7388.09	5656.18	-1092.06	5657.91	0.27	
14339.00	89.480	95.150	7388.94	5749.86	-1099.67	5751.59	1.09	
14432.00	89.630	93.280	7389.66	5842.59	-1106.50	5844.34	2.02	
14524.00	89.540	89.750	7390.33	5934.54	-1108.94	5936.29	3.84	
14617.00	89.660	88.040	7390.98	6027.52	-1107.14	6029.26	1.84	
14710.00	89.420	89.120	7391.73	6120.49	-1104.84	6122.23	1.19	
14803.00	90.060	89.790	7392.15	6213.48	-1103.95	6215.22	1.00	
14897.00	90.220	89.200	7391.92	6307.48	-1103.12	6309.22	0.65	
14990.00	90.030	87.950	7391.72	6400.45	-1100.81	6402.19	1.36	
15084.00	89.850	87.780	7391.82	6494.39	-1097.31	6496.12	0.26	
15176.00	89.750	87.700	7392.14	6586.33	-1093.68	6588.05	0.14	
15270.00	89.880	85.850	7392.44	6680.18	-1088.39	6681.90	1.97	
15363.00	89.720	86.580	7392.76	6772.99	-1082.25	6774.69	0.80	
15455.00	89.720	89.630	7393.21	6864.93	-1079.21	6866.63	3.32	
15548.00	89.910	91.970	7393.51	6957.91	-1080.51	6959.62	2.52	
15640.00	89.940	93.970	7393.63	7049.77	-1085.28	7051.49	2.17	
15733.00	90.060	94.710	7393.63	7142.50	-1092.32	7144.22	0.81	
15825.00	90.250	92.060	7393.39	7234.32	-1097.75	7236.05	2.89	
15918.00	90.090	89.280	7393.11	7327.30	-1098.83	7329.03	2.99	
16012.00	90.180	87.660	7392.89	7421.27	-1096.32	7423.00	1.73	
16105.00	90.060	88.250	7392.69	7514.21	-1093.01	7515.94	0.65	
16199.00	90.150	87.900	7392.52	7608.16	-1089.85	7609.88	0.38	
16293.00	89.970	84.730	7392.42	7701.97	-1083.81	7703.68	3.38	
16387.00	89.820	87.740	7392.60	7795.76	-1077.64	7797.46	3.21	



# Actual Wellpath Report

BOST FARM 40C-8-L AWP

Page 8 of 10



## REFERENCE WELLPATH IDENTIFICATION

Operator	SRC ENERGY	Slot	SLOT#48 BOST FARM 40C-8-L (1517'FNL & 939'FWL, SEC.07)
Area	COLORADO	Well	BOST FARM 40C-8-L
Field	WELD COUNTY (NAD83,TRUE NORTH)	Wellbore	BOST FARM 40C-8-L AWB
Facility	SEC.07-T05N-R66W		

## WELLPATH DATA (196 stations)

MD [ft]	Inclination [°]	Azimuth [°]	TVD [ft]	Vert Sect [ft]	North [ft]	East [ft]	DLS [°/100ft]	Comments
16479.00	89.630	89.790	7393.04	7887.74	-1075.65	7889.44	2.24	
16572.00	90.060	91.030	7393.29	7980.73	-1076.32	7982.43	1.41	
16665.00	90.030	91.990	7393.22	8073.69	-1078.77	8075.40	1.03	
16758.00	90.060	94.770	7393.14	8166.51	-1084.25	8168.23	2.99	
16851.00	91.080	95.430	7392.22	8259.13	-1092.52	8260.85	1.31	
16943.00	90.950	93.900	7390.59	8350.79	-1100.00	8352.53	1.67	
17038.00	90.680	90.540	7389.24	8445.69	-1103.68	8447.44	3.55	
17133.00	90.610	87.570	7388.17	8540.67	-1102.11	8542.41	3.13	
17226.00	90.310	84.280	7387.42	8633.43	-1095.50	8635.16	3.55	
17318.00	90.250	84.130	7386.97	8724.97	-1086.21	8726.69	0.18	
17412.00	90.370	83.790	7386.46	8818.46	-1076.32	8820.16	0.38	
17504.00	90.220	85.070	7385.99	8910.04	-1067.39	8911.72	1.40	
17596.00	90.400	86.320	7385.49	9001.78	-1060.49	9003.46	1.37	
17689.00	90.400	87.940	7384.84	9094.67	-1055.83	9096.34	1.74	
17794.00	90.220	91.250	7384.27	9199.65	-1055.09	9201.32	3.16	LAST BH SURVEY (2530'FNL & 439'FEL, SEC.08)
17820.00	90.220	91.250	7384.17	9225.64	-1055.66	9227.31	0.00	PROJ TO BIT (2531'FNL & 413'FEL, SEC.08)

## HOLE & CASING SECTIONS - Ref Wellbore: BOST FARM 40C-8-L AWB Ref Wellpath: BOST FARM 40C-8-L AWP

String/Diameter	Start MD [ft]	End MD [ft]	Interval [ft]	Start TVD [ft]	End TVD [ft]	Start N/S [ft]	Start E/W [ft]	End N/S [ft]	End E/W [ft]
13.5in Open Hole	20.00	1825.00	1805.00	20.00	1783.67	0.00	0.00	-182.47	-270.79
9.625in Casing Surface	20.00	1825.00	1805.00	20.00	1783.67	0.00	0.00	-182.47	-270.79
8.5in Open Hole	1825.00	17820.00	15995.00	1783.67	7384.17	-182.47	-270.79	-1055.66	9227.31



# Actual Wellpath Report

BOST FARM 40C-8-L AWP

Page 9 of 10



REFERENCE WELLPATH IDENTIFICATION			
Operator	SRC ENERGY	Slot	SLOT#48 BOST FARM 40C-8-L (1517'FNL & 939'FWL, SEC.07)
Area	COLORADO	Well	BOST FARM 40C-8-L
Field	WELD COUNTY (NAD83,TRUE NORTH)	Wellbore	BOST FARM 40C-8-L AWB
Facility	SEC.07-T05N-R66W		

TARGETS								
Name	TVD [ft]	North [ft]	East [ft]	Grid East [US ft]	Grid North [US ft]	Latitude	Longitude	Shape
SEC.07-T05N-R66W	24.00	-1288.55	325.26	3187161.59	1394309.79	40°24'49.806"N	104°49'40.249"W	polygon
SEC.08-T05N-R66W	24.00	-1288.55	325.26	3187161.59	1394309.79	40°24'49.806"N	104°49'40.249"W	polygon
BOST FARM 40C-8-L TOP OF PROD REV-1 (2587'FNL & 150'FWL, SEC.07)	7192.95	-1056.11	-783.31	3186051.33	1394533.83	40°24'52.103"N	104°49'54.581"W	point
BOST FARM 40C-8-L TOP OF PROD ON PLAT (2587'FNL & 150'FWL, SEC.07)	7205.00	-1056.11	-783.31	3186051.33	1394533.83	40°24'52.103"N	104°49'54.581"W	point
BOST FARM 1N-8C-L HARDLINE BOX	7285.00	180.03	1.39	3186826.63	1395775.82	40°25'04.318"N	104°49'44.436"W	polygon
BOST FARM 40C-8-L BHL ON PLAT (2551'FNL & 460'FEL, SEC.08)	7375.00	-1075.91	9180.07	3196014.18	1394589.41	40°24'51.890"N	104°47'45.773"W	point
BOST FARM 40C-8-L BHL REV-1 (2551'FNL & 460'FEL, SEC.08)	7389.68	-1075.91	9180.07	3196014.18	1394589.41	40°24'51.890"N	104°47'45.773"W	point

WELLPATH COMPOSITION - Ref Wellbore: BOST FARM 40C-8-L AWB      Ref Wellpath: BOST FARM 40C-8-L AWP				
Start MD [ft]	End MD [ft]	Positional Uncertainty Model	Log Name/Comment	Wellbore
20.00	1781.00	BHI NaviTrak (Standard)	13 1/2" SURFACE SECTION <121-1765>	BOST FARM 40C-8-L AWB
1781.00	17794.00	BHI AutoTrak Curve (MagCAD+IFR1, Short spacing)	8 1/2" MONOBORE SURVEYS <1851-17794>	BOST FARM 40C-8-L AWB
17794.00	17820.00	Blind Drilling (std)	Projection to bit	BOST FARM 40C-8-L AWB



# Actual Wellpath Report

## BOST FARM 40C-8-L AWP

Page 10 of 10



REFERENCE WELLPATH IDENTIFICATION			
Operator	SRC ENERGY	Slot	SLOT#48 BOST FARM 40C-8-L (1517'FNL & 939'FWL, SEC.07)
Area	COLORADO	Well	BOST FARM 40C-8-L
Field	WELD COUNTY (NAD83,TRUE NORTH)	Wellbore	BOST FARM 40C-8-L AWB
Facility	SEC.07-T05N-R66W		

WELLPATH COMMENTS				
MD [ft]	Inclination [°]	Azimuth [°]	TVD [ft]	Comment
7800.00	86.487	88.812	7199.45	LANDING (2604'FNL & 160'FWL, SEC.07)
17794.00	90.220	91.250	7384.27	LAST BH SURVEY (2530'FNL & 439'FEL, SEC.08)
17820.00	90.220	91.250	7384.17	PROJ TO BIT (2531'FNL & 413'FEL, SEC.08)