



March 4, 2019

Kate Graves
Reclamation Representative
Kerr-McGee Oil & Gas Onshore LP
501 N Division Blvd
Platteville, Colorado 80651

**RE: Colorado Oil & Gas Conservation Commission (COGCC)
Form 4 (Interim Reclamation Completion Notice)
XCEL 11C-22HZ (434970)
Kerr-McGee Oil & Gas Onshore LP (Operator: 47120)**

Dear Ms. Graves :

Apex Companies, LLC (Apex) is presenting this letter to Kerr-McGee Oil & Gas Onshore LP (Kerr-McGee) documenting the results of a vegetation assessment that demonstrates successful completion of interim reclamation efforts, per COGCC Rule 1003, on the above-referenced location in Weld County, Colorado. Attached is a topographic location map, which identifies the referenced location.

Site visits and the completed vegetation assessment confirmed that the unused portions of the reduced production footprint have been regraded and returned by the landowner to cropland and agricultural use. Based on this result, interim reclamation as defined by COGCC Rule 1003.e (1) has been achieved. Photographs required by Rule 1003.e (3) are also attached along with a site map illustrating photo origins.

On June 5, 2018, the site was visited and four photographs documenting crop establishment on all sides of the location were taken along with one photograph illustrating planted crops.

Apex appreciates the opportunity to provide environmental consulting services to Kerr-McGee with this project. Should you have any questions or require additional information, please do not hesitate to contact me.

Sincerely,
Apex Companies, LLC

A handwritten signature in black ink, appearing to read 'Adam Roll', written over a light blue horizontal line.

Adam Roll
Environmental Scientist
970-589-6111
Adam.Roll@apexcos.com

On behalf of-
Chris Hines
Oil & Gas Program Manager
970-773-9865
Chris.Hines@apexcos.com

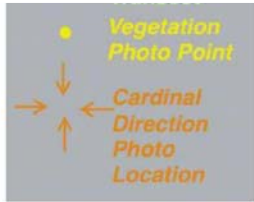
Attachments:

1. Vegetation Survey Site Map
2. Topographic Location Map
3. Vegetation Survey Photos



Vegetation Survey Site Map

Xcel 14-27HZ
(434970)



Legal Description: SESW Sec 27,
T1N-R67W
County: Weld
Land Use: Crop Land

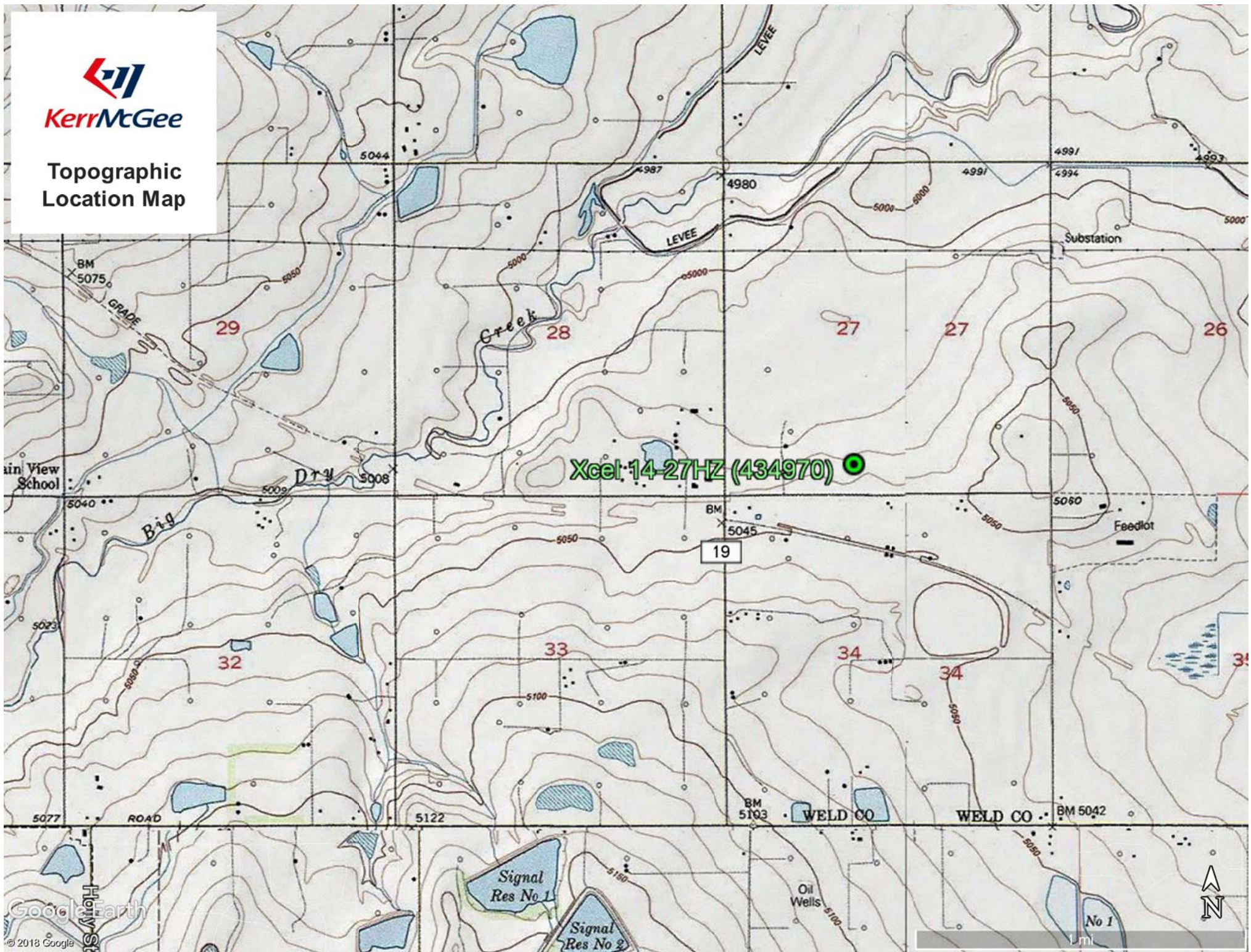
Inspector: A. Gibbard
Assessment Date: 06/05/2018





KerrMcGee

Topographic
Location Map



Xcel 14-27Hz (434970)



1 mi

Vegetation Assessment Photo Log

Date Completed - 06/05/2018

Client - Kerr-McGee Oil & Gas Onshore LP

Location Name (ID) - XCEL 11C-22HZ (434970)



North of Disturbance - Facing South



South of Disturbance - Facing North



West of Disturbance - Facing East



East of Disturbance - Facing West

Vegetation Assessment Photo Log

Date Completed - 06/05/2018

Client - Kerr-McGee Oil & Gas Onshore LP

Location Name (ID) - XCEL 11C-22HZ (434970)



Crop Vegetation Photo Point