

HALLIBURTON

iCem[®] Service

SRC ENERGY INC-EBUS

Bost Farm 40N-8B-L Production

Sincerely,
Meghan Jacobs

Legal Notice

Disclaimer:

All information in this report is provided subject to the terms and conditions which govern the services provided by Halliburton. Halliburton personnel use their best efforts in gathering information and their best judgment in interpreting it, but any interpretation, research, analysis or recommendation furnished by Halliburton are opinions based upon inferences from measurements and empirical relationships and assumptions, which inferences and empirical relationships and assumptions are not infallible, and with respect to which professionals in the industry may differ. iCem 3D Displacement results are used to understand how fluids intermix during a cement job. Simulation and 3D displacement results are not intended as and should not be used as a replacement for bond logs in determining top of cement. Current 3D model calculations are known to model more volume than the input volume for standard cases due to known calculation improvements required. For rotational cases, the modeled volume will be impacted by the same calculations impacting the standard cases, as well as additional constraints imposed to make the calculation time required operationally feasible. Therefore, until further notice, 3D displacement results should not be used for replacement of a bond log, or used as an identifier of top of cement. HALLIBURTON IS UNABLE TO GUARANTEE THE ACCURACY OF ANY CHART INTERPRETATION, RESEARCH ANALYSIS, OR JOB RECOMMENDATION and any interpretation or recommendation is not for use of or reliance upon by any third party. The customer has full responsibility for any of its decisions which are based on the information provided in this report.

Table of Contents

1.0 Cementing Job Summary 4

 1.1 Executive Summary4

2.0 Real-Time Job Summary 7

 2.1 Job Event Log7

3.0 Attachments..... 11

 3.1 Bost Farm 40N-8B-L Production – Job Chart with Events11

 3.2 Bost Farm 40N-8B-L Production – Job Chart without Events12

 3.3 Bost Farm 40N-8B-L Production – Job Chart without Nitrogen.....13

1.0 Cementing Job Summary

1.1 Executive Summary

Halliburton appreciates the opportunity to perform the cementing services on the **Bost Farm 40N-8B-L** cement **Production** casing job. A pre-job safety meeting was held before the job where details of the job were discussed, potential safety hazards were reviewed, and environmental compliance procedures were outlined.

Approximately 15 bbls of spacer were returned to surface.

Halliburton maintains a continuous quality improvement process and appreciates any comments or suggestions that you may have. Halliburton again thanks you for the opportunity to perform service work on this well. We hope to be your solutions provider for future projects.

Respectfully,

Halliburton Fort Lupton

HALLIBURTON

Cementing Job Summary

The Road to Excellence Starts with Safety

Sold To #: 359915		Ship To #: 0003902146		Quote #:		Sales Order #: 0905379248				
Customer: SRC ENERGY INC-EBUS				Customer Rep: Buddy Davis/Steve Wilson						
Well Name: BOST FARM		Well #: 40N-8B-L		API/UWI #: 05-123-47701-00						
Field: WATTENBERG	City (SAP): GREELEY	County/Parish: WELD		State: COLORADO						
Legal Description: SW NW-7-5N-66W-1477FNL-939FWL										
Contractor: PRECISION DRLG				Rig/Platform Name/Num: PRECISION 462						
Job BOM: 14143 14143										
Well Type: HORIZONTAL OIL										
Sales Person: HALAMERICA\HB41307				Srv Supervisor: Kamereon White						
Job										
Formation Name										
Formation Depth (MD)		Top			Bottom					
Form Type				BHST						
Job depth MD		17,560ft		Job Depth TVD		7224				
Water Depth				Wk Ht Above Floor		5				
Perforation Depth (MD)		From			To					
Well Data										
Description	New / Used	Size in	ID in	Weight lbm/ft	Thread	Grade	Top MD ft	Bottom MD ft	Top TVD ft	Bottom TVD ft
Casing		9.625	8.921	36	LTC	J-55	0	1837		1837
Casing		5.5	4.778	20	TXP-BTC	P110IC	0	17546	0	7224
Open Hole Section			8.5				1837	17560	1837	7224
Tools and Accessories										
Type	Size in	Qty	Make	Depth ft		Type	Size in	Qty	Make	
Wet Shoe	5.5	1	WTHR	17,441		Top Plug	5.5	1	WTHR	
Float Shoe	5.5	1	WTHR	17,546		Bottom Plug	5.5	1	WTHR	
Float Collar	5.5	1	WTHR							
						Plug Container	5.5	1	HES	
						Centralizers	5.5	253	HES	
Fluid Data										
Stage/Plug #: 1										
Fluid #	Stage Type	Fluid Name		Qty	Qty UoM	Mixing Density lbm/gal	Yield ft3/sack	Mix Fluid Gal	Rate bbl/min	Total Mix Fluid Gal
1	Tuned Spacer III	Tuned Spacer III		40	bbl	11.5	3.84	24	5	
Stage/Plug #: 2										
Fluid #	Stage Type	Fluid Name		Qty	Qty UoM	Mixing Density lbm/gal	Yield ft3/sack	Mix Fluid Gal	Rate bbl/min	Total Mix Fluid Gal
2	HalCem	HALCEM (TM) SYSTEM		545	sack	15.6	1.18		5	5.2

HALLIBURTON

Cementing Job Summary

Fluid #	Stage Type	Fluid Name	Qty	Qty UoM	Mixing Density lbm/gal	Yield ft3/sack	Mix Fluid Gal	Rate bbl/mi n	Total Mix Fluid Gal
3	HalSeal	HALSEAL (TM) SYSTEM	795	sack	15.6	1.18		5	5.2
Fluid #	Stage Type	Fluid Name	Qty	Qty UoM	Mixing Density lbm/gal	Yield ft3/sack	Mix Fluid Gal	Rate bbl/mi n	Total Mix Fluid Gal
4	NeoCem	NeoCem TM	1080	sack	13.2	2.06		8	9.83
Fluid #	Stage Type	Fluid Name	Qty	Qty UoM	Mixing Density lbm/gal	Yield ft3/sack	Mix Fluid Gal	Rate bbl/mi n	Total Mix Fluid Gal
5	MMCR Displacement	MMCR Displacement	20	bbl	8.34				
Fluid #	Stage Type	Fluid Name	Qty	Qty UoM	Mixing Density lbm/gal	Yield ft3/sack	Mix Fluid Gal	Rate bbl/mi n	Total Mix Fluid Gal
6	Water	Water	295	bbl	8.33				
Fluid #	Stage Type	Fluid Name	Qty	Qty UoM	Mixing Density lbm/gal	Yield ft3/sack	Mix Fluid Gal	Rate bbl/mi n	Total Mix Fluid Gal
7	MMCR Displacement	MMCR Displacement	70	bbl	8.34				

2.0 Real-Time Job Summary

2.1 Job Event Log

Type	Seq. No.	Activity	Graph Label	Date	Time	Source	DH Density (ppg)	Comb Pump Rate (bbl/min)	DS Pump Press (psi)	Comments
Event	1	Call Out	Call Out	1/1/2019	15:00:00	USER				Crew called out and was requested to be on location @ 21:00 .
Event	2	Depart Yard Safety Meeting	Depart Yard Safety Meeting	1/1/2019	20:15:00	USER				Crew discussed the route of travel and supervisor called in a journey.
Event	3	Crew Leave Yard	Crew Leave Yard	1/1/2019	20:30:00	USER				Crew left the yard
Event	4	Arrive at Location from Service Center	Arrive at Location from Service Center	1/1/2019	21:30:00	USER				Crew arrived on location and the rig was circulating.
Event	5	Safety Meeting - Assessment of Location	Safety Meeting - Assessment of Location	1/1/2019	21:50:00	USER				Spotting in trucks and supervisor met with the customer and got the well information. TD-17560' TP-17,546' FC-17498' Cas-5.5" 20 # P110 PC-9.625" 36# Set @ 1837' Mud Weight-10.2 ppg OBM, Wet Shoe- 6 Bbls TVD-7224' OH- 8.5."
Event	6	Safety Meeting - Pre Rig-Up	Safety Meeting - Pre Rig-Up	1/1/2019	22:00:00	USER				Discussed rig up procedure and signed the JSA.
Event	7	Rig-Up Equipment	Rig-Up Equipment	1/1/2019	22:15:00	USER				Rigged up all HES equipment and lines.
Event	8	Rig-Up Completed	Rig-Up Completed	1/2/2019	00:00:00	USER				All HES equipment and lines rigged up safely.
Event	9	Comment	Comment	1/2/2019	02:20:00	USER	0.04	0.00	-54.00	Picked up Commander Head onto cat walk
Event	10	Comment	Comment	1/2/2019	02:30:00	USER	0.03	0.00	-54.00	Made up on the Top Drive, torqued to 30,000lbs
Event	11	Comment	Comment	1/2/2019	02:46:00	USER	0.03	0.00	-54.00	torqued commander head to casing, 18,000lbs
Event	12	Comment	Comment	1/2/2019	03:15:00	USER	0.03	0.00	-54.00	floor was rigged up for the rig to circulate, rig circulated at 10bbl/min, 2060psi circulating pressure, 160,000lb hook load,
Event	13	Pre-Job Safety Meeting	Pre-Job Safety Meeting	1/2/2019	03:30:00	USER	0.04	0.00	-54.00	Discussed the job procedure and pressures with all personnel involved with the cement job.

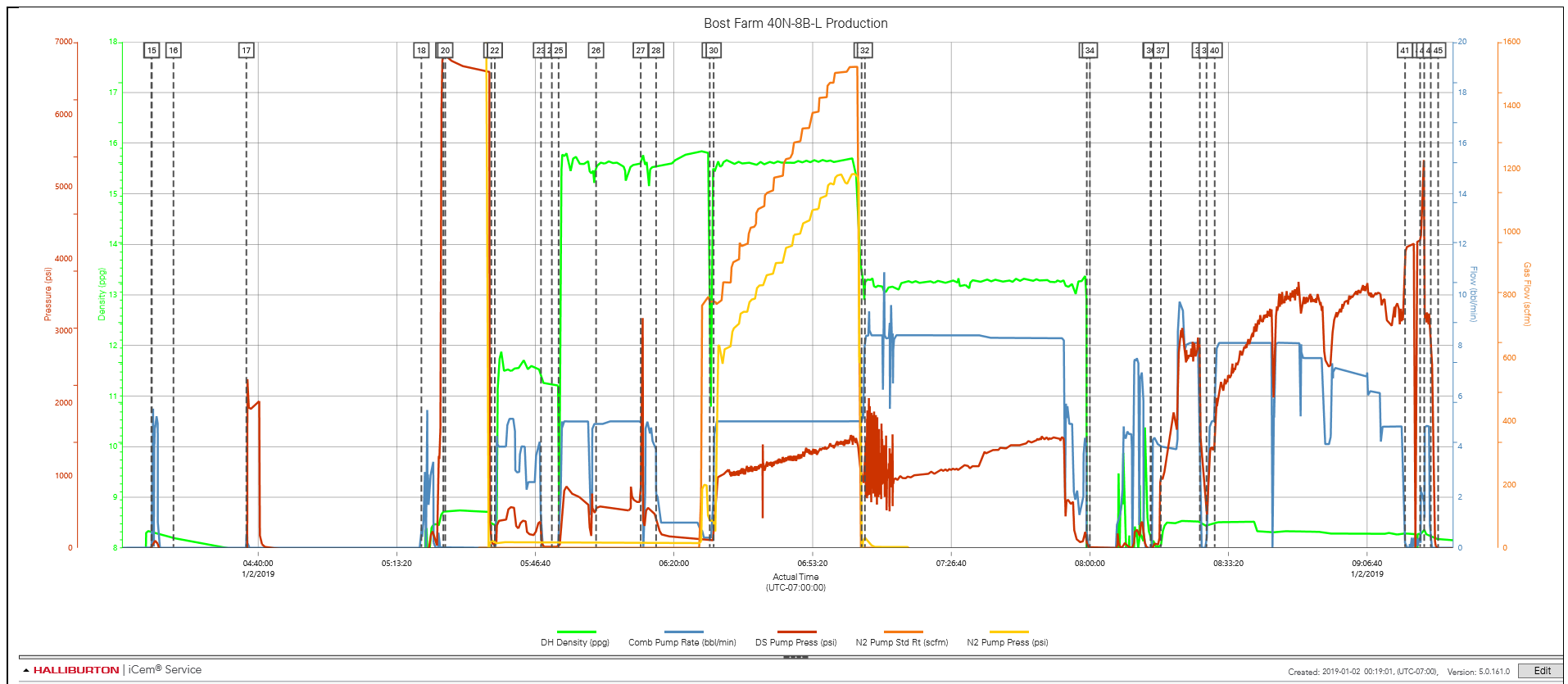
Event	14	Start Job	Start Job	1/2/2019	04:14:19	COM11	8.30	0.00	6.00	
Event	15	Prime Pumps	Prime Pumps	1/2/2019	04:14:26	COM9	8.33	0.00	10.00	
Event	16	Check Weight	Check Weight	1/2/2019	04:19:38	COM9	8.20	0.00	-45.00	Batch up tub of Tuned Spacer 11.5ppg, Weight verified by pressurized mud scale.
Event	17	Other	Other	1/2/2019	04:37:11	COM9	7.92	0.00	-44.00	attempted to fill, HPVT was frozen, used steam to thaw out iron
Event	18	Other	Other	1/2/2019	05:19:15	COM9	1.07	0.00	-26.00	fill lines, 3bbl fresh water, 3bbl/min 240psi,
Event	19	Test Lines	Test Lines	1/2/2019	05:24:32	COM9	8.72	0.00	6824.00	Tested the lines to 500 psi to test the EKO's They worked so we performed a high psi test to 7000 psi and held for N2 to perform their pressure test.
Event	20	Test Lines	Test Lines	1/2/2019	05:25:00	USER	8.72	0.00	6816.00	N2 Crew performed 10,000 psi pressure test, engineers had com ports switched and did not record N2 pressure at this time
Event	21	Drop Bottom Plug	Drop Bottom Plug	1/2/2019	05:36:04	COM9	8.46	0.00	86.00	Customer and Halliburton Rep witnessed the bottom plug being dropped
Event	22	Pump Spacer 1	Pump Spacer 1	1/2/2019	05:36:54	COM9	8.46	0.00	29.00	Pump 40 bbls of 11.5ppg Tuned Spacer III, 3.84 yield, 20 gallons each of Musol A and Dual B added on the fly, 10 gallons D-Air 3000L used as well.
Event	23	Shutdown	Shutdown	1/2/2019	05:48:01	COM9	11.54	0.00	174.00	Shutdown to mix up first tub of Cap cement
Event	24	Check Weight	Check Weight	1/2/2019	05:50:37	COM9	11.23	0.00	17.00	Weight verified by pressurized mud scale.
Event	25	Pump Cap Cement	Pump Cap Cement	1/2/2019	05:52:15	COM9	11.21	0.60	17.00	Pump 114.80bbls(545sks) of cap cement at 15.6ppg, 1.182 ft3/sk, 5.195 gal/sk, 5bbl/min 720psi
Event	26	Check Weight	Check Weight	1/2/2019	06:01:15	COM9	15.57	4.90	548.00	Weight verified by pressurized mud scale.
Event	27	Pressure Up	Pressure Up	1/2/2019	06:12:00	USER	15.61	5.00	825.00	Shut in N2 manifold bypass and pressure increased because of frozen check valve
Event	28	Slow Rate	Shutdown	1/2/2019	06:15:41	USER	15.58	2.20	432.00	Foam manifold bypass froze, slowed down to thaw
Event	29	Check Weight	Check Weight	1/2/2019	06:28:36	COM9	13.09	0.40	106.00	Weight verified by pressurized mud scale.
Event	30	Pump Foam Cement	Pump Foam Cement	1/2/2019	06:29:32	COM9	15.42	4.20	230.00	Pump 167 bbls (795 sacks) foamed lead cement at 15.6ppg, 1.18 yield. Foamed down to 13.2ppg. Pumped at 5 bbls/min, 1230 psi

Event	31	Pump Tail Cement	Pump Tail Cement	1/2/2019	07:05:06	COM9	13.39	5.00	1023.00	Pumped 397 bbls (1080 sacks) tail cement at 13.2ppg, 2.057 yield. 8bbl/min, 1210psi
Event	32	Check Weight	Check Weight	1/2/2019	07:05:54	COM9	13.24	8.40	1288.00	density verified with pressurized mud scale
Event	33	Shutdown	Shutdown	1/2/2019	07:59:16	COM9	3.49	0.00	64.00	Shutdown to wash up pumps and lines, annular closed
Event	34	Clean Lines	Clean Lines	1/2/2019	08:00:00	USER	0.70	0.00	1.00	Clean lines and wash up pump
Event	35	Drop Top Plug	Drop Top Plug	1/2/2019	08:14:34	COM9	8.20	0.00	-21.00	Customer witnessed HES employee drop top plug
Event	36	Pump Displacement	Pump Displacement	1/2/2019	08:14:43	COM9	8.18	0.00	-23.00	Pump 385 bbls displace. 10 gal. MMCR in first 20 bbls, 10 gal. MMCR in last 70bbls
Event	37	Displ Reached Cement	Displ Reached Cement	1/2/2019	08:17:04	COM9	8.06	4.00	1005.00	At 60bbls away we caught the plug
Event	38	Shutdown	Shutdown	1/2/2019	08:26:26	COM9	8.53	0.00	2097.00	Company rep wanted to shut down because there were no returns, got returns immediately before shutting down.
Event	39	Pump Displacement	Pump Displacement	1/2/2019	08:28:03	COM9	8.43	0.00	457.00	Upon company reps. approval we slowly began to increase rate until 8bbl/min was reached
Event	40	Comment	Comment	1/2/2019	08:30:00	USER	8.49	5.60	1388.00	176 gallons of Foamer 1026 used. The N2 unit started with 216,600 scf and ended with 96,600. Total N2 used for the job was 120,000 scf (44,903 scf for foam cement and 75,097 scf during conditioning and cool down)
Event	41	Bump Plug	Bump Plug	1/2/2019	09:15:47	COM9	8.30	0.20	4013.00	bump plug @ calculated displacement, final circulating pressure was 3500psi, took 500psi over to 4000psi, held for 3 minutes
Event	42	Other	Other	1/2/2019	09:19:24	COM9	8.27	0.40	4254.00	Pressured up to shift the wet shoe sub at 2bbl/min, shifted at 5400psi
Event	43	Other	Other	1/2/2019	09:20:24	COM9	8.35	1.60	3852.00	Pumped 6bbl wet shoe at 5bbl/min, pressure was at 3300psi
Event	44	Other	Other	1/2/2019	09:21:58	COM9	8.24	0.00	2740.00	floats held, got 3.5bbls back to the truck
Event	45	End Job	End Job	1/2/2019	09:23:45	COM9				cement job completed, 15bbls of spacer were returned to surface, calculated TOTC 7815', TOLC 3722', TOCC 1042"
Event	46	Post-Job Safety Meeting (Pre Rig-Down)	Post-Job Safety Meeting (Pre Rig-Down)	1/2/2019	09:30:00	USER	8.16	10.60	359.00	Discussed job and delegated tasks for rig down procedure
Event	47	Rig Down Lines	Rig Down Lines	1/2/2019	09:40:00	USER				EE's began to rig down all HES lines and equipment

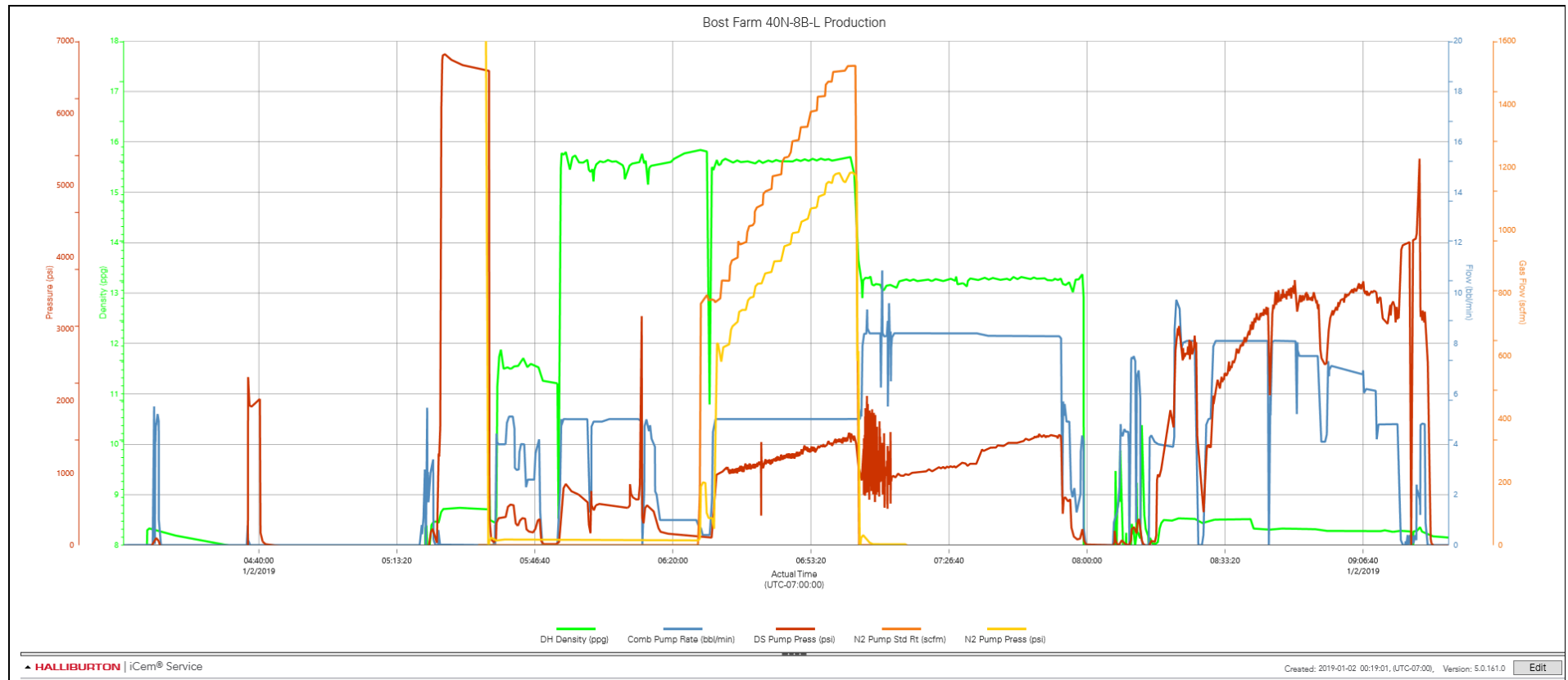
Event	48	Rig-Down Completed	Rig-Down Completed	1/2/2019	10:30:00	USER	All HES lines and equipment were rigged down without incident, EE's staged at Exit to location in preparation for journey
Event	49	Depart Location for Service Center or Other Site	Depart Location for Service Center or Other Site	1/2/2019	11:00:00	USER	Kameron White and crew would like to thank you for your business and choosing Halliburton Cement, please give us a call if you have any questions or concerns

3.0 Attachments

3.1 Bost Farm 40N-8B-L Production – Job Chart with Events



3.2 Bost Farm 40N-8B-L Production – Job Chart without Events



3.3 Bost Farm 40N-8B-L Production – Job Chart without Nitrogen

