



# Log Variables

DatabaseC:\ProgramData\Warrior\Data\12-19-18\_1.db  
 Dataset field/well/run1/pass9/\_vars\_

## Top - Bottom

BHTEMP_Src TEMP	BOREID in 7.875	BOTTEMP degF 100	CASEOD in 4.5	CASETHCK in 0	CASEWGHT lb/ft 11.6	MAXAMPL mV 0
MINAMPL mV 1	MINATTN db/ft 0.08	PERFS 0	PPT usec 0	SRFTEMP degF 0	TDEPTH ft 0	

## Variable Description

BHTEMP\_Src : BHTEMP Input Source Selector  
 BOREID : Borehole I.D.  
 BOTTEMP : Bottom Hole Temperature  
 CASEOD : Casing O.D.  
 CASETHCK : Casing Thickness  
 CASEWGHT : Casing Weight  
 MAXAMPL : Maximum Amplitude

MINAMPL : Minimum Amplitude  
 MINATTN : Minimum Attenuation  
 PERFS : Perforation Flag  
 PPT : Predicted Pipe Time  
 SRFTEMP : Surface Temperature  
 TDEPTH : Total Depth

Sensor	Offset (ft)	Schematic	Description	Length (ft)	O.D. (in)	Weight (lb)	
			Cable Head-Titan_144 1 7/16" Titan Cable Head	1.03	1.44	2.00	
			Centralizer-275 Probe 2 3/4" Probe Adjustable Spring Centralizer	2.88	2.75	15.00	
TEMP	17.33						
WVFS8	15.03			PROBE-RBT-DIGITAL-RBL-DCT (FW1411-9.21) Probe 2 3/4" Radii Bond with Temp-Corrosion Package		2.75	105.00
WVFS7	15.03						
WVFS6	15.03						
WVFS5	15.03						
WVFS4	15.03						
WVFS3	15.03						
WVFS2	15.03						
WVFS1	15.03						
WVFCAL	15.03						
WV3FT	15.03						
WV5FT	14.03						
HEADVOLT	10.84		Centralizer-275 Probe 2 3/4" Probe Adjustable Spring Centralizer	2.88	2.75	15.00	

CCL	7.09		PROBE-GR/CCL-DIGITAL-275 Probe GCT 4.75181)	2.75	60.00
GCT_TEMP	6.30		Probe 2 3/4" Gamma Ray/Temp/CCL		
GR	5.71				
			Centralizer-275 Probe 2 3/4" Probe Adjustable Spring Centralizer	2.88	15.00
			Bullnose-PROBE Probe Go Pin Pressure Cap	0.33	1.00
Dataset: 12-19-18_1.db: field/well/run1/pass9 Total length: 23.96 ft Total weight: 213.00 lb O.D.: 2.75 in					

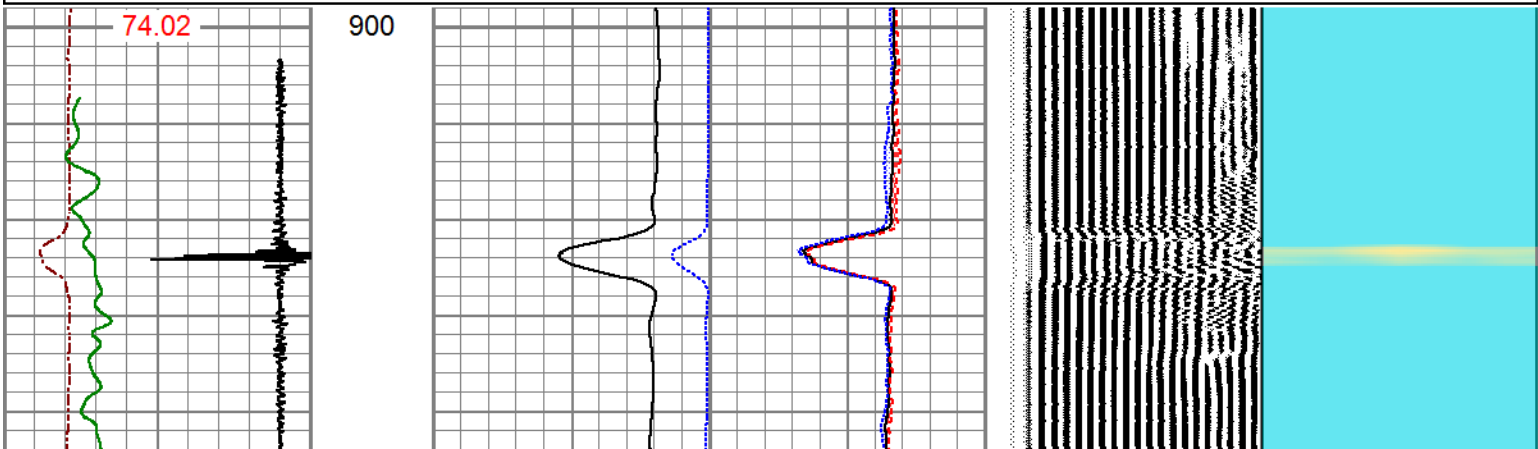
**PIONEER**  
Pioneer Energy Services

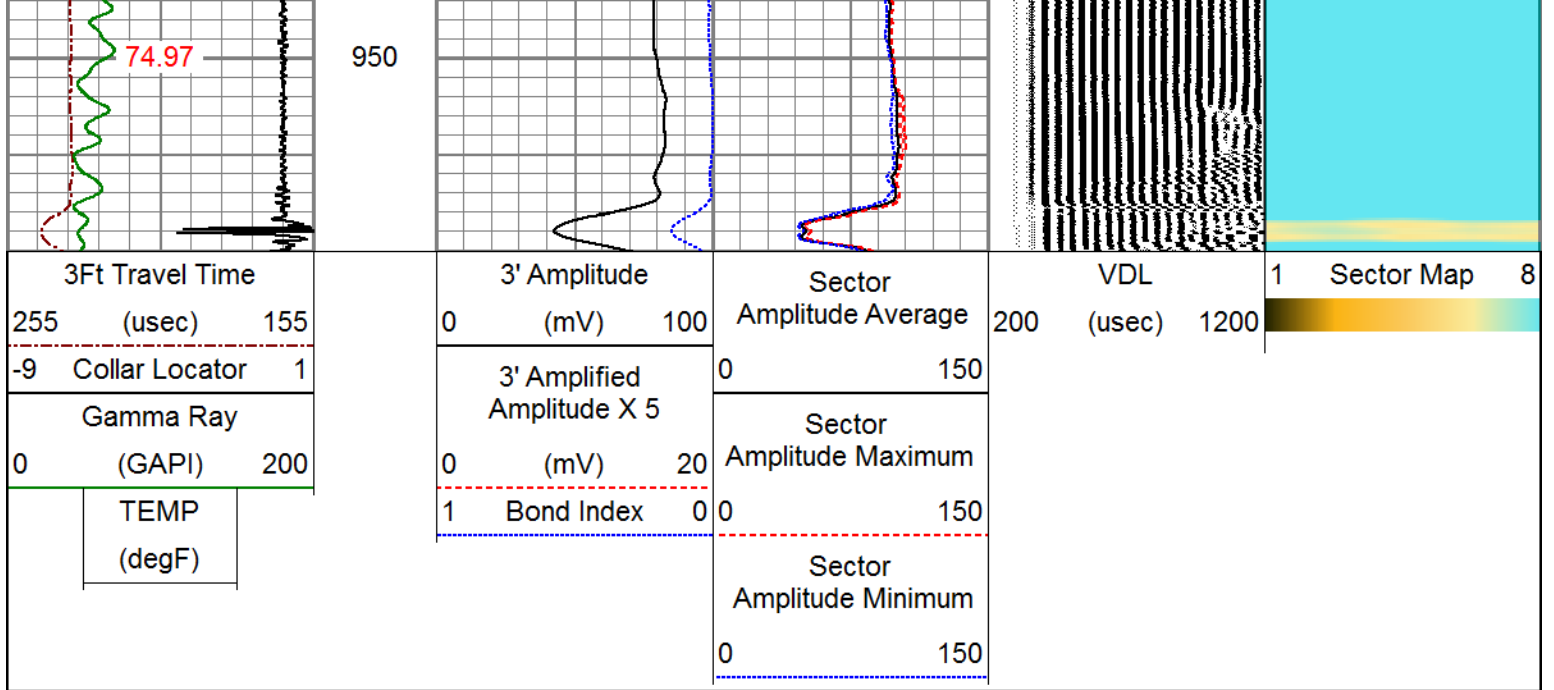
## FREE PIPE SECTION

### ZERO PSI APPLIED AT SURFACE

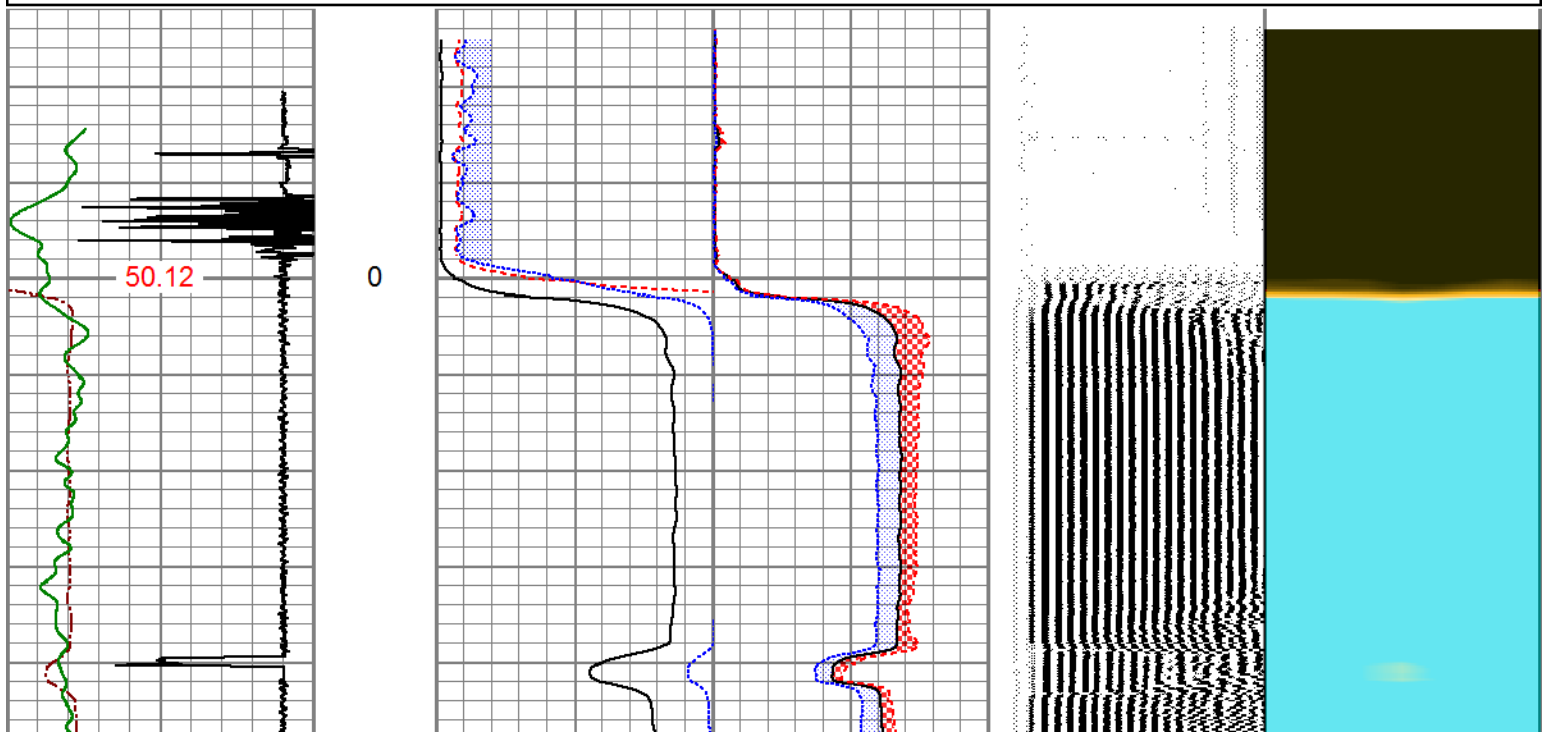
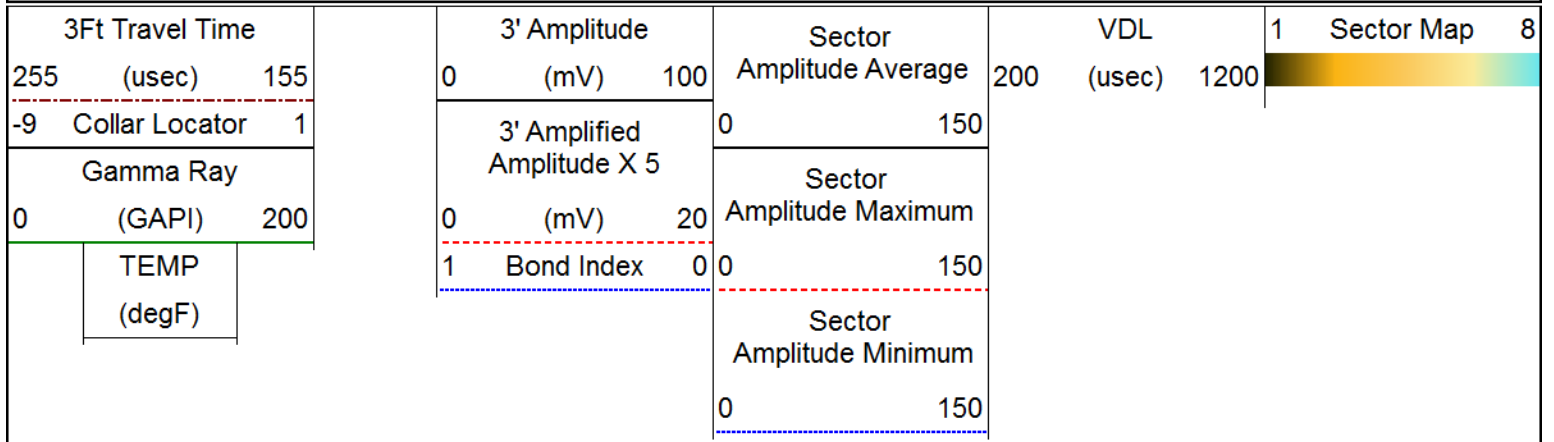
Database File	12-19-18_1.db
Dataset Pathname	pass7
Presentation Format	pinr_scbl
Dataset Creation	Wed Dec 19 08:08:43 2018
Charted by	Depth in Feet scaled 1:240

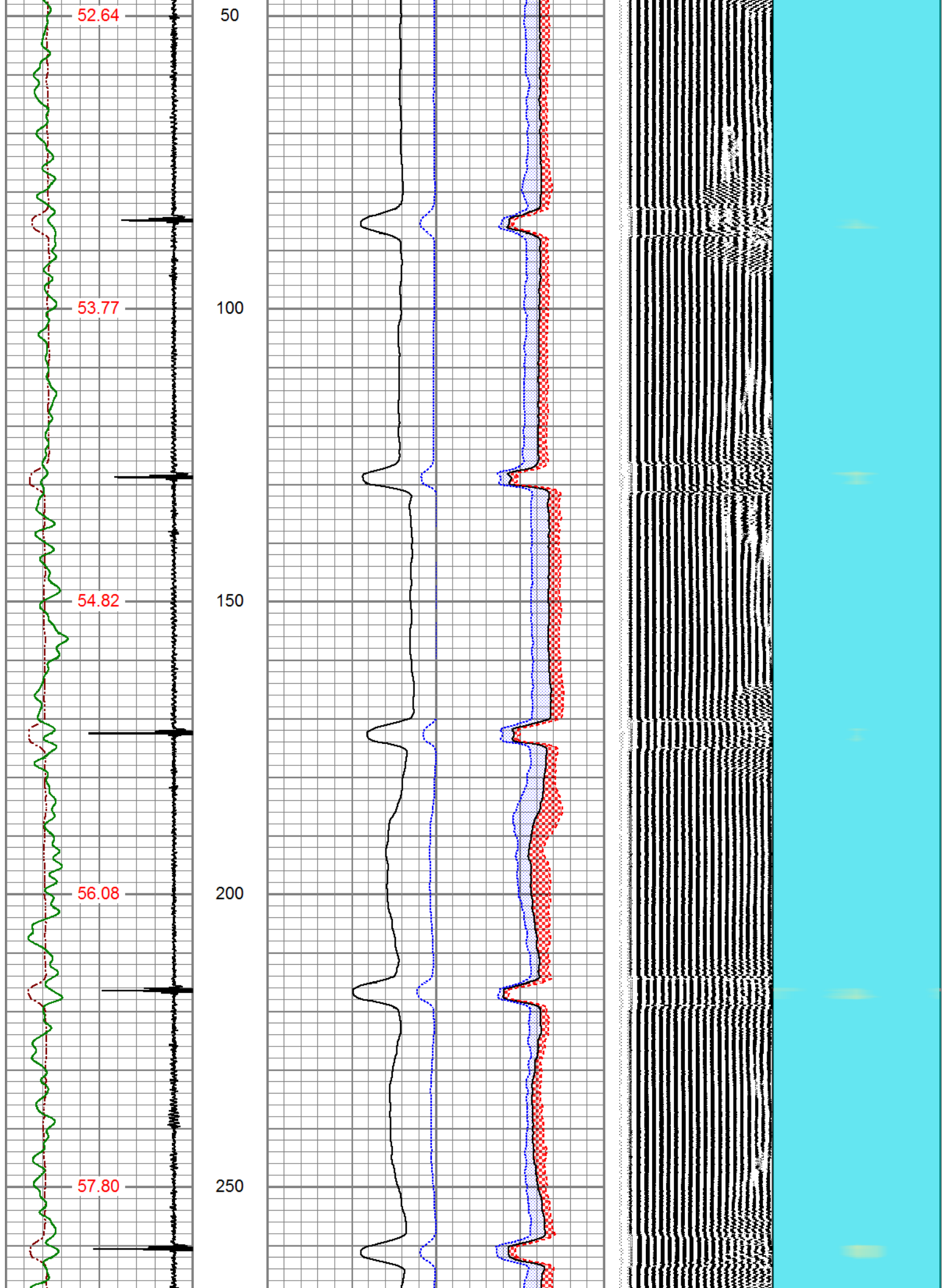
3Ft Travel Time 255 (usec) 155	3' Amplitude 0 (mV) 100	Sector Amplitude Average 0 150	VDL 200 (usec) 1200	1 Sector Map 8
-9 Collar Locator 1	3' Amplified Amplitude X 5 0 (mV) 20	Sector Amplitude Maximum 0 150		
Gamma Ray 0 (GAPI) 200	1 Bond Index 0	Sector Amplitude Minimum 0 150		
TEMP (degF)				

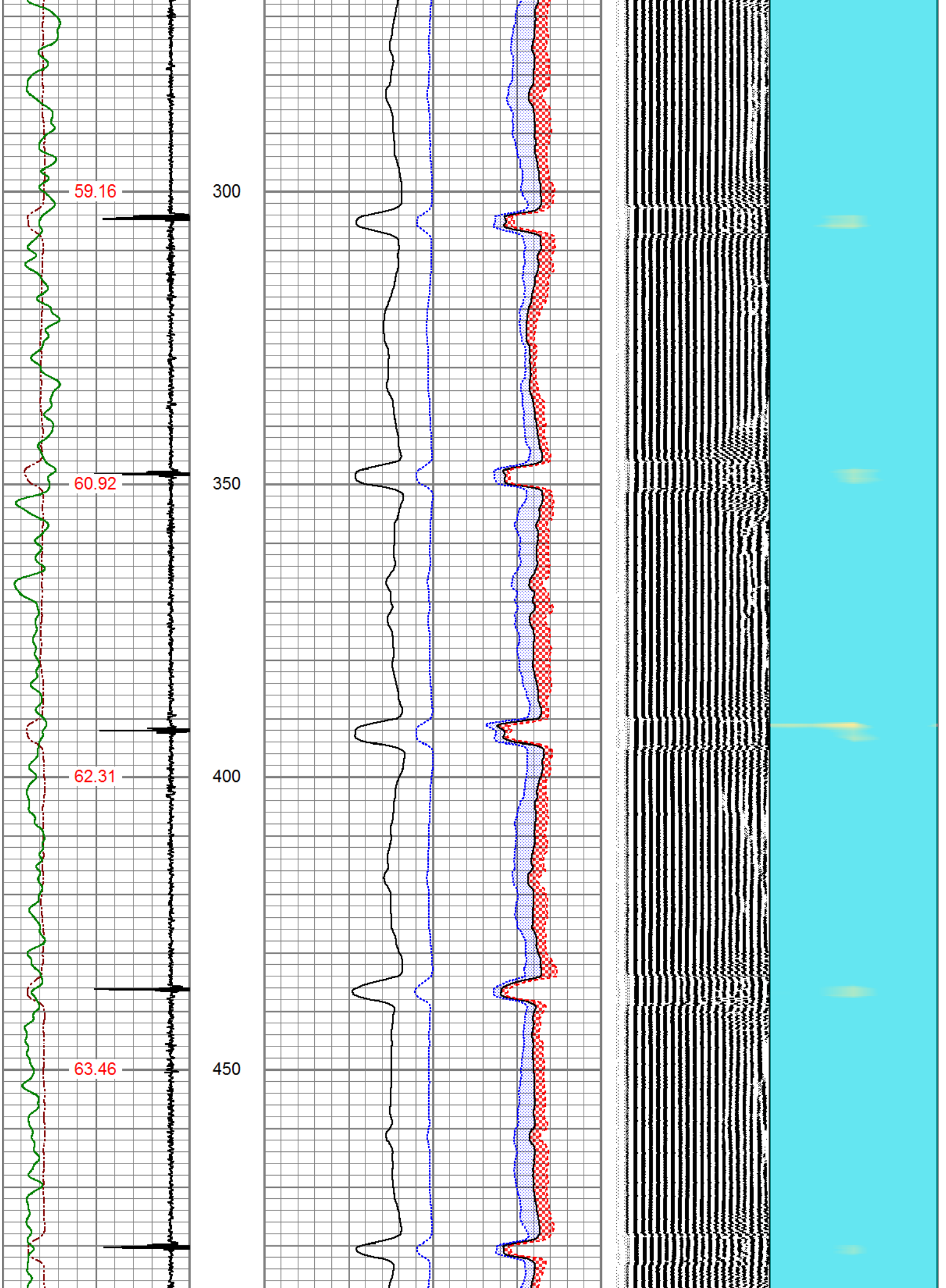


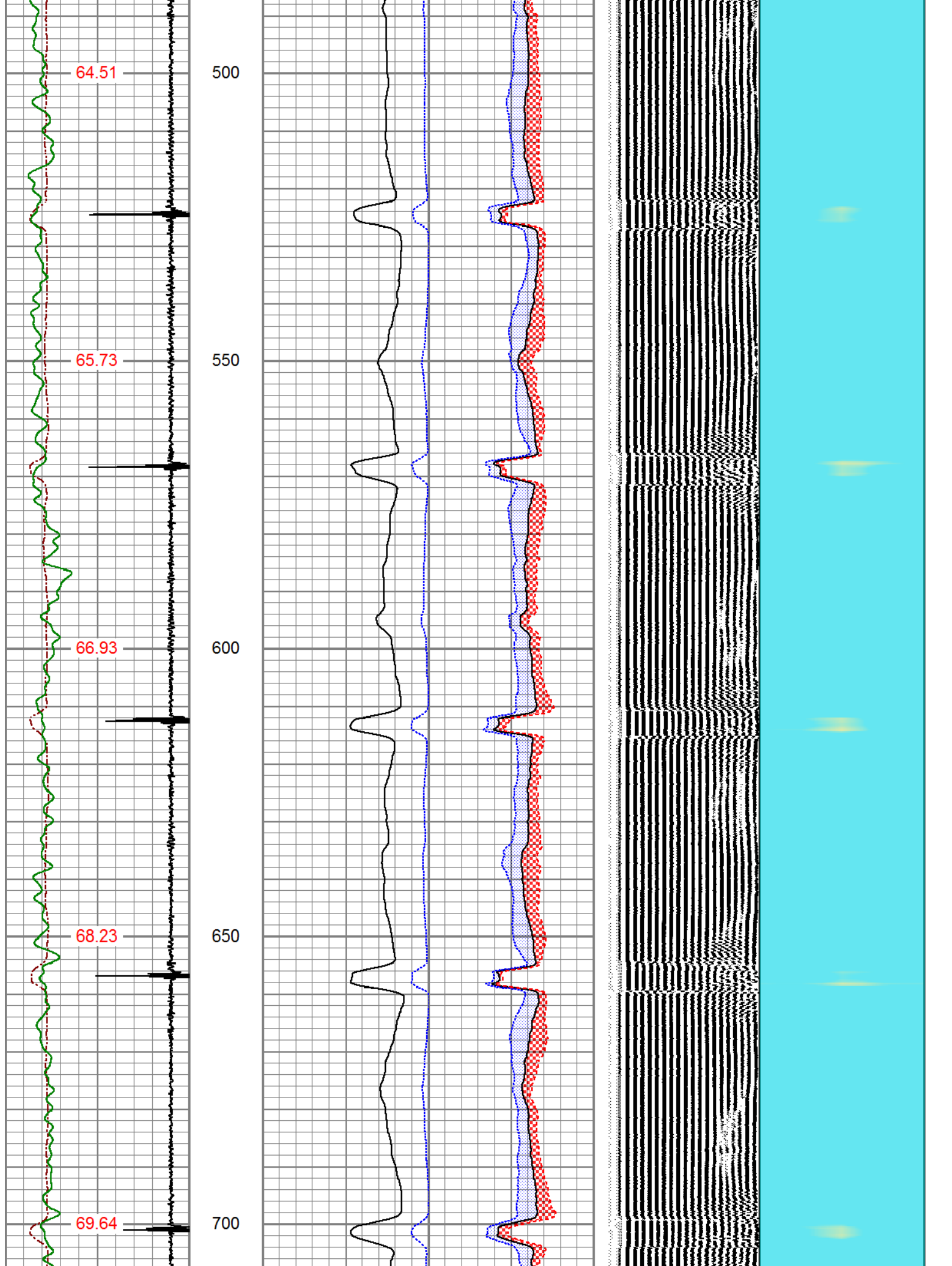


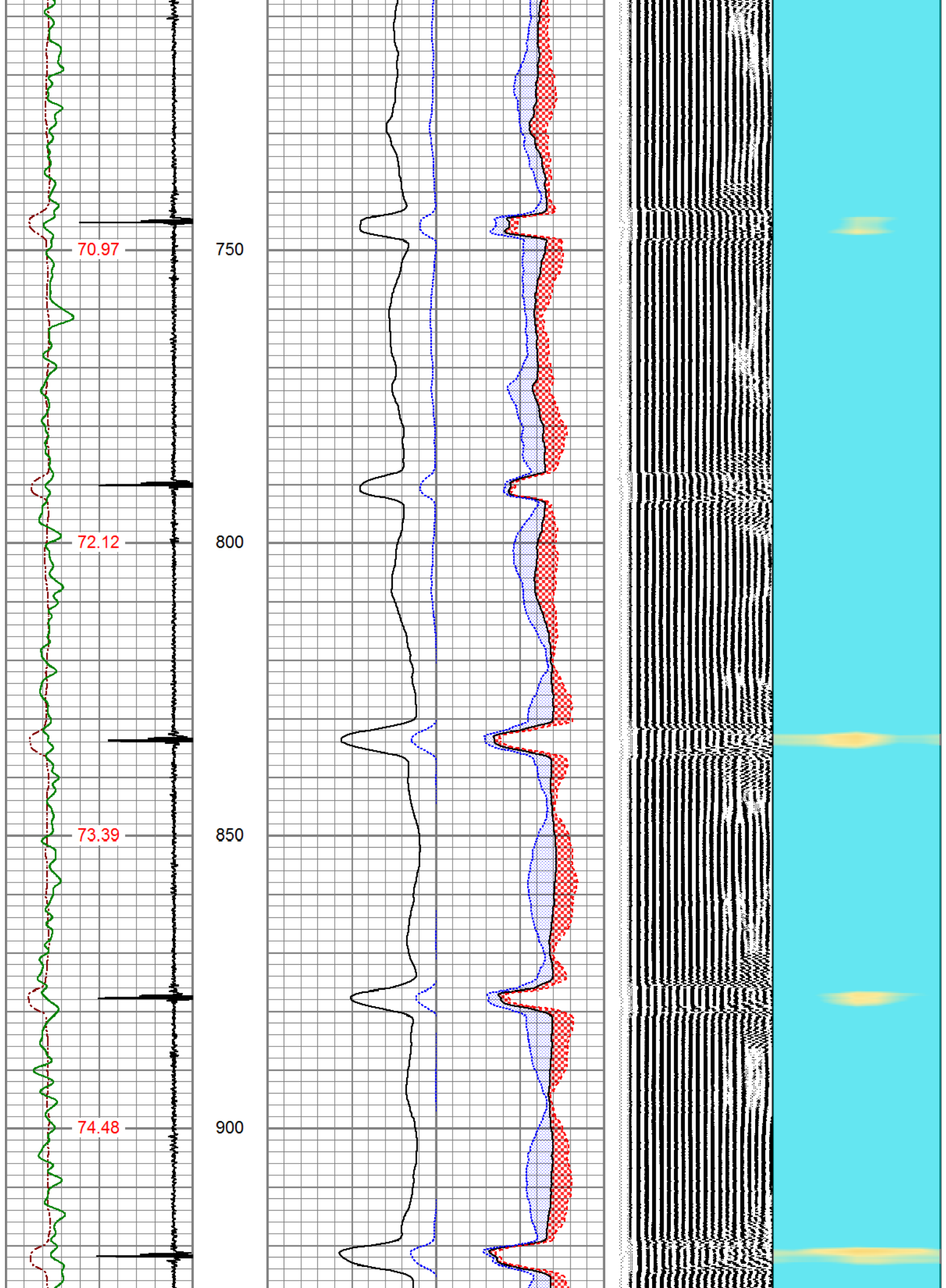
Database File 12-19-18\_1.db  
 Dataset Pathname pass9  
 Presentation Format pinr\_scb1  
 Dataset Creation Wed Dec 19 08:23:07 2018  
 Charted by Depth in Feet scaled 1:240

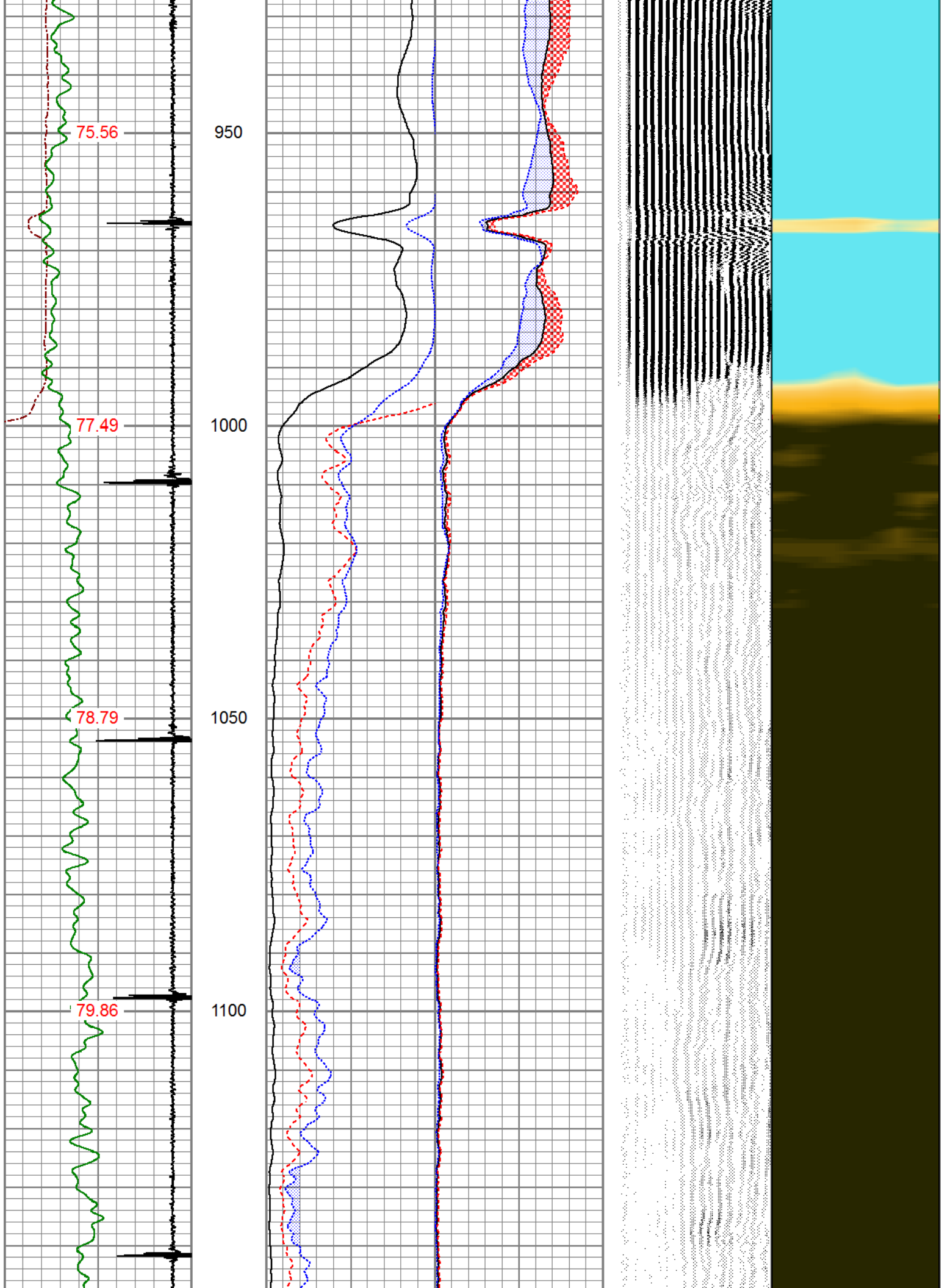


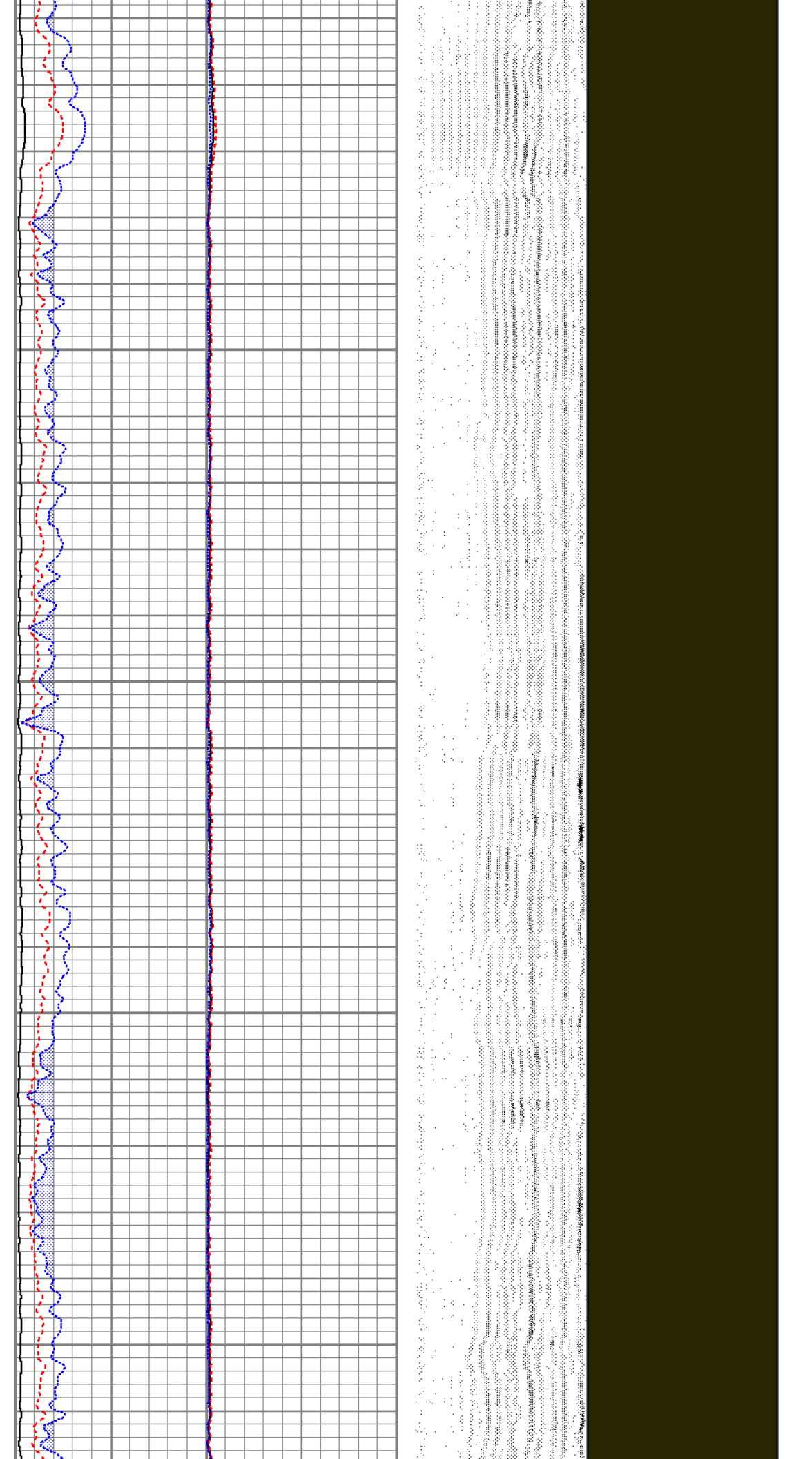
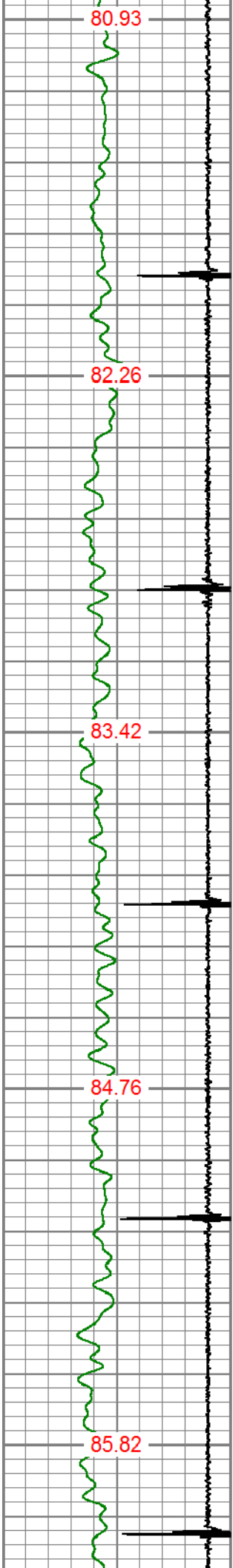


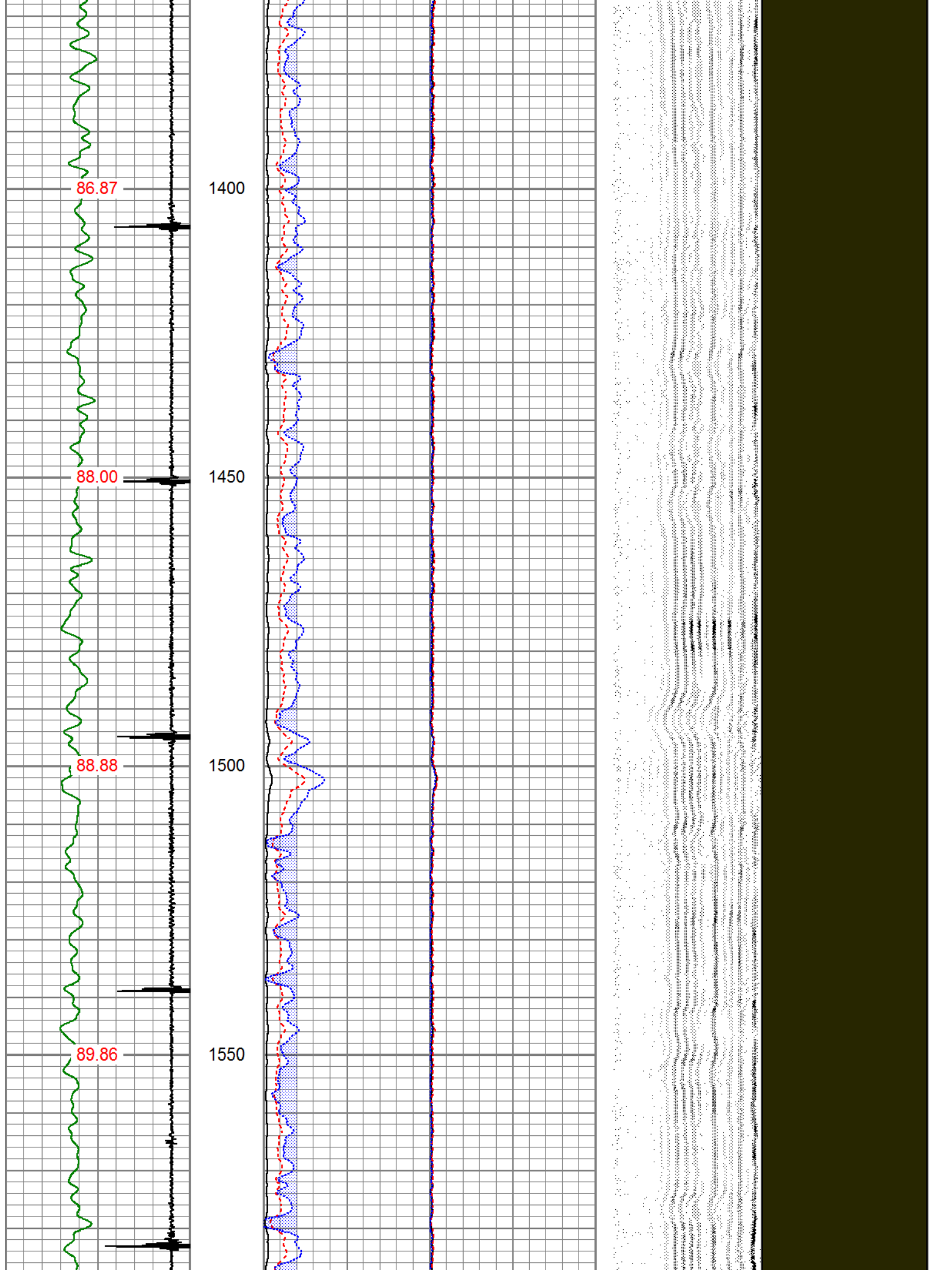


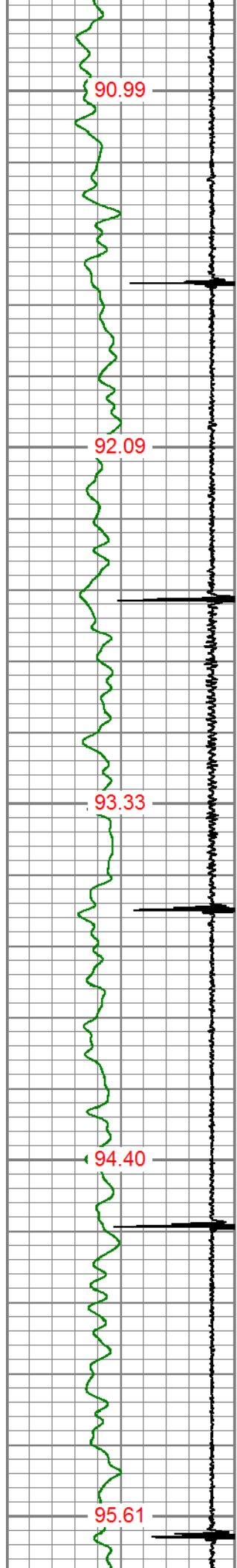




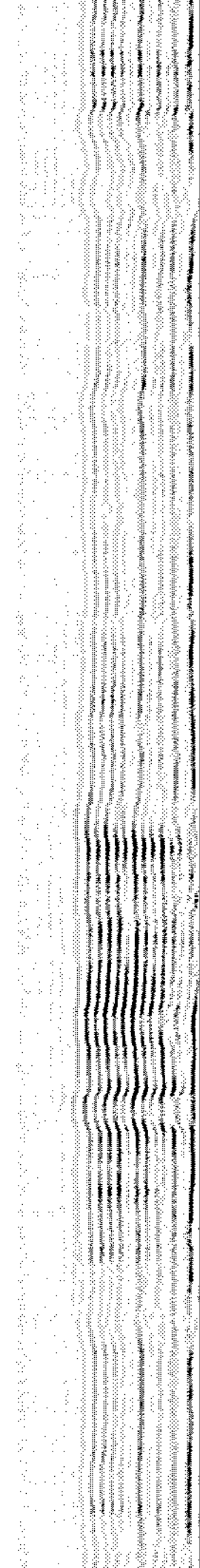
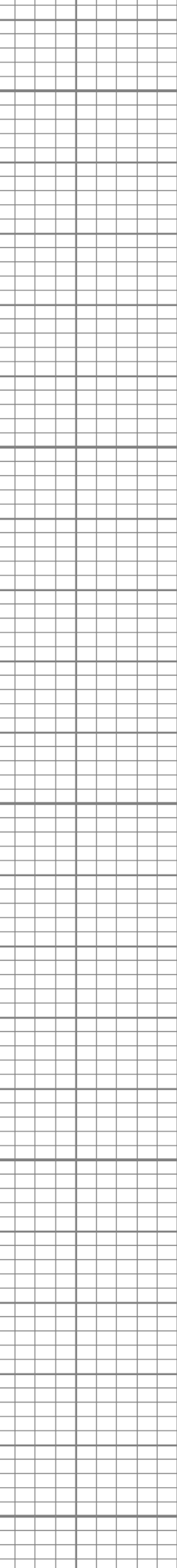
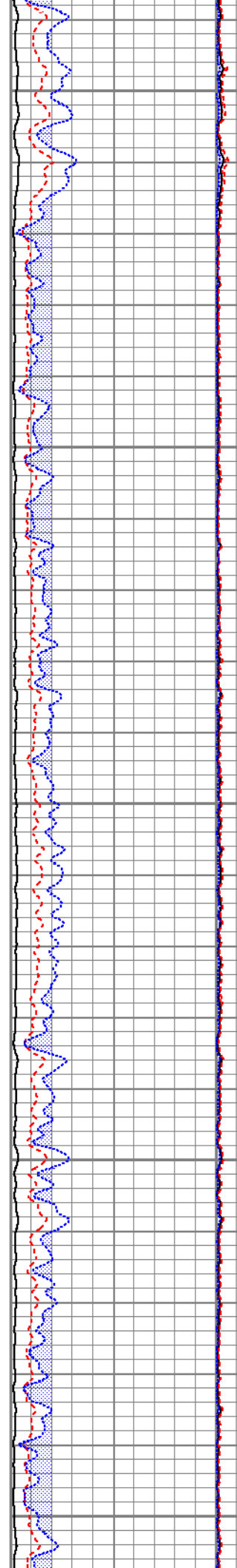


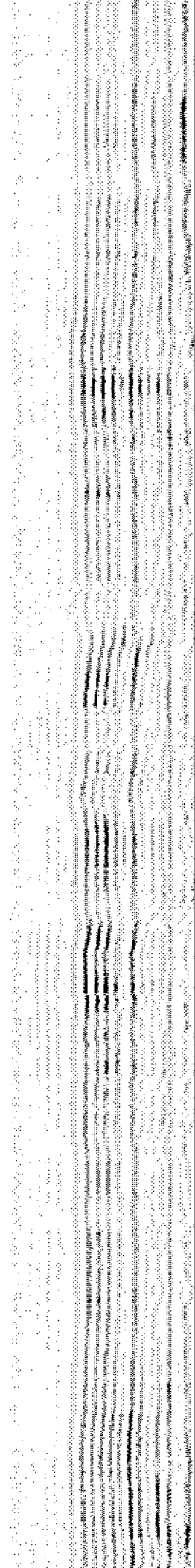
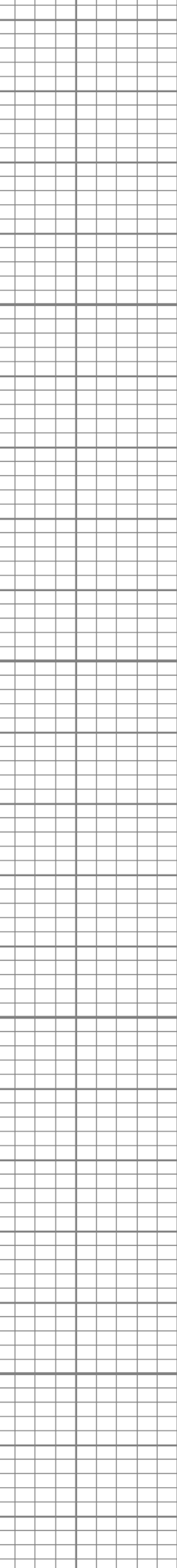
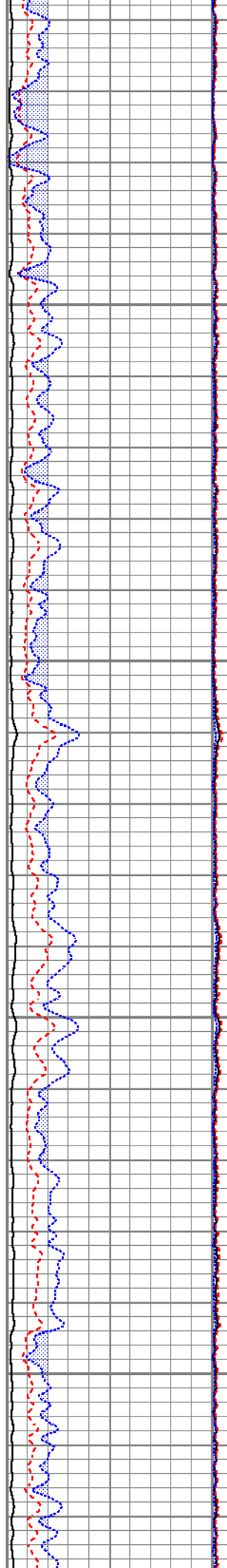
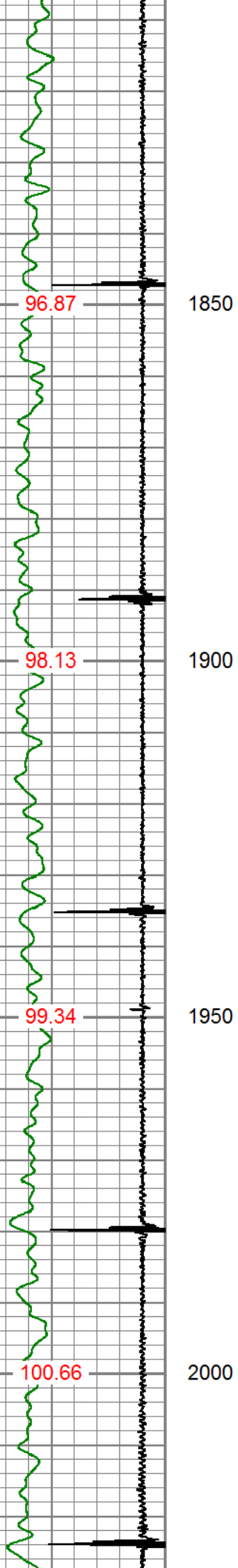


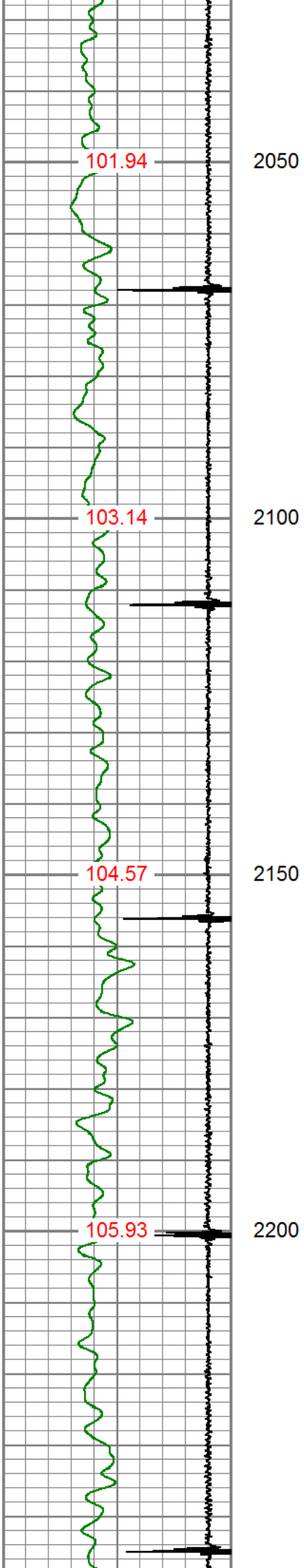




1600  
1650  
1700  
1750  
1800





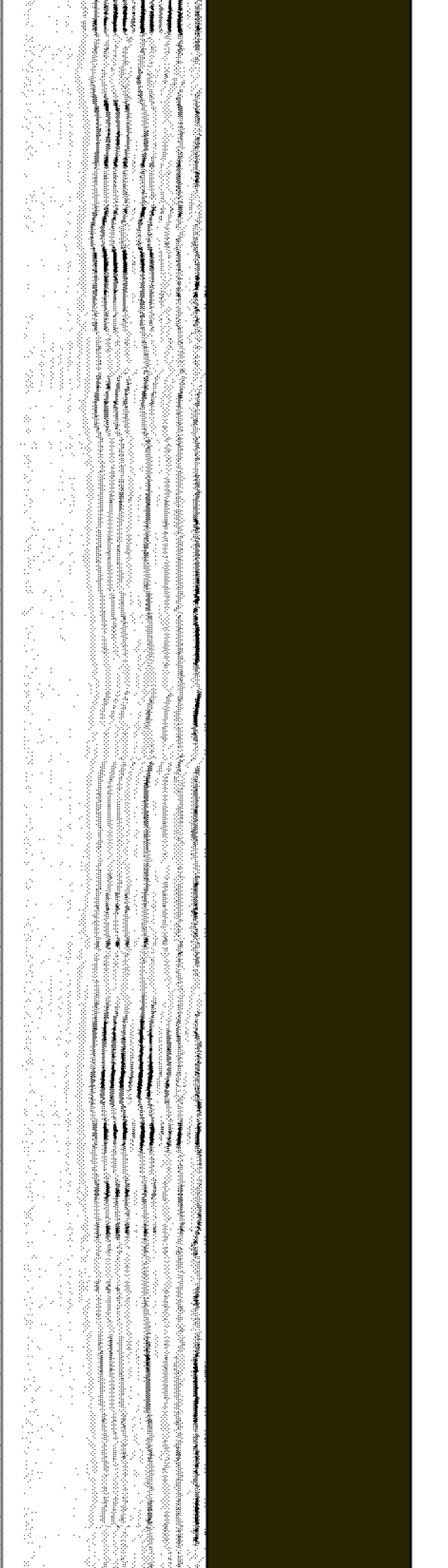
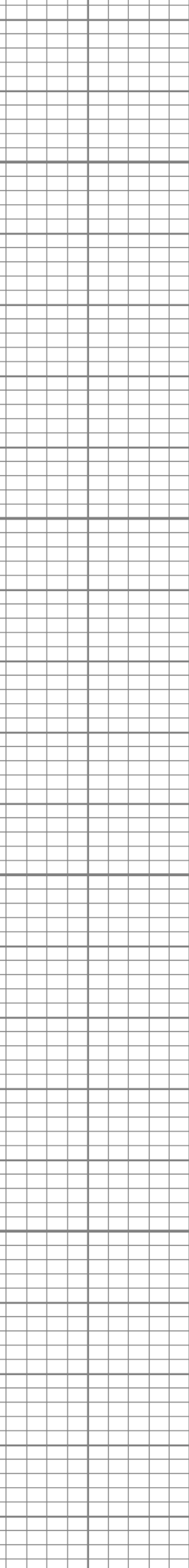
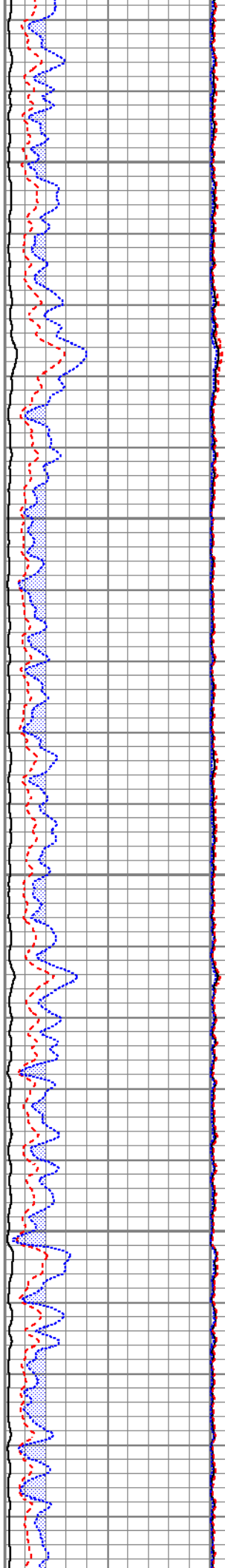


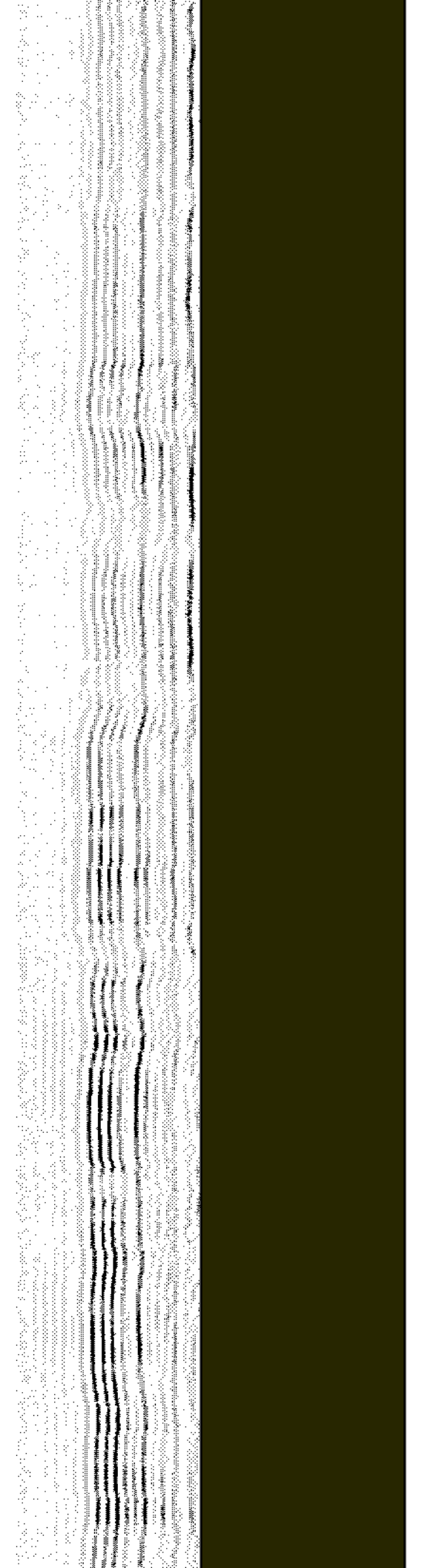
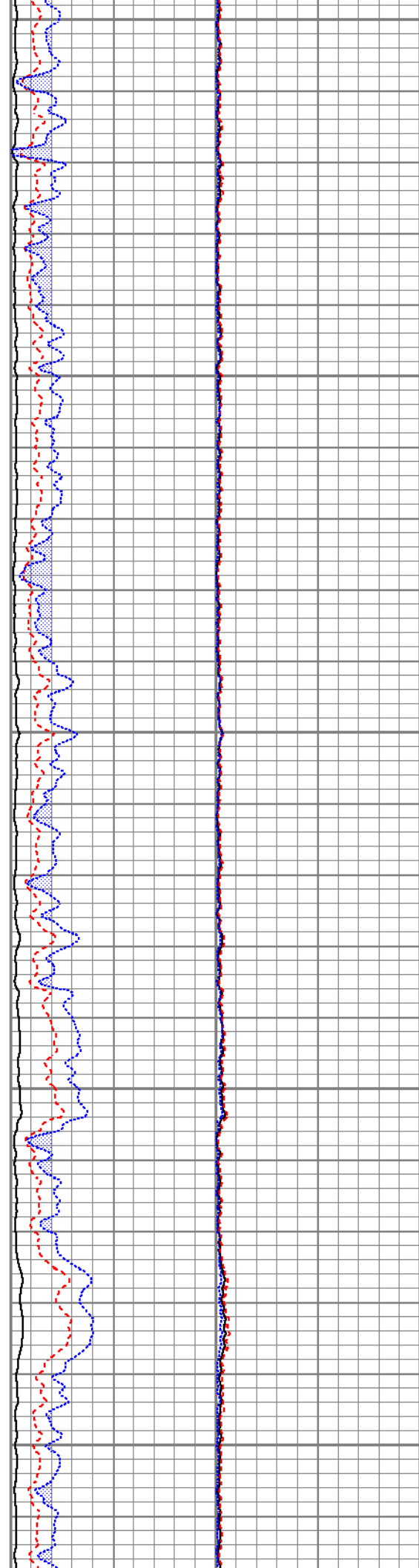
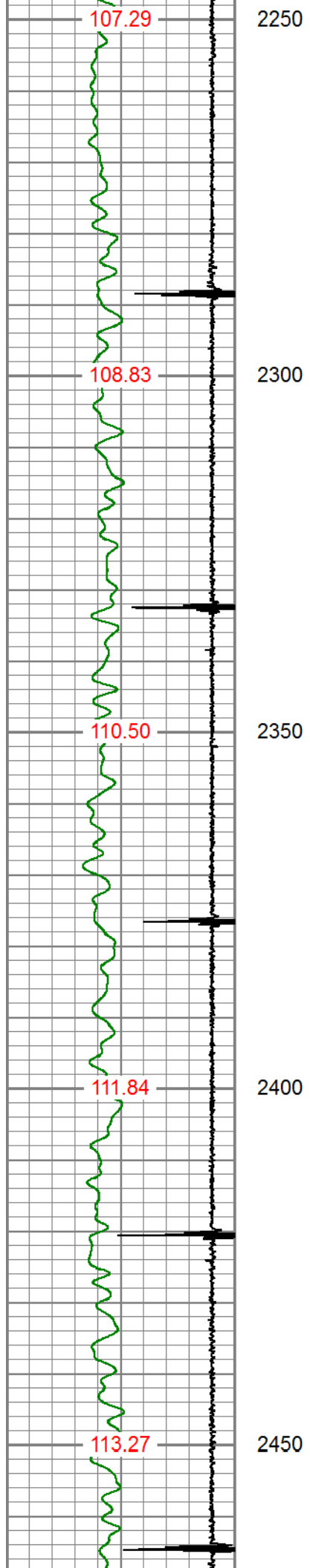
2050

2100

2150

2200



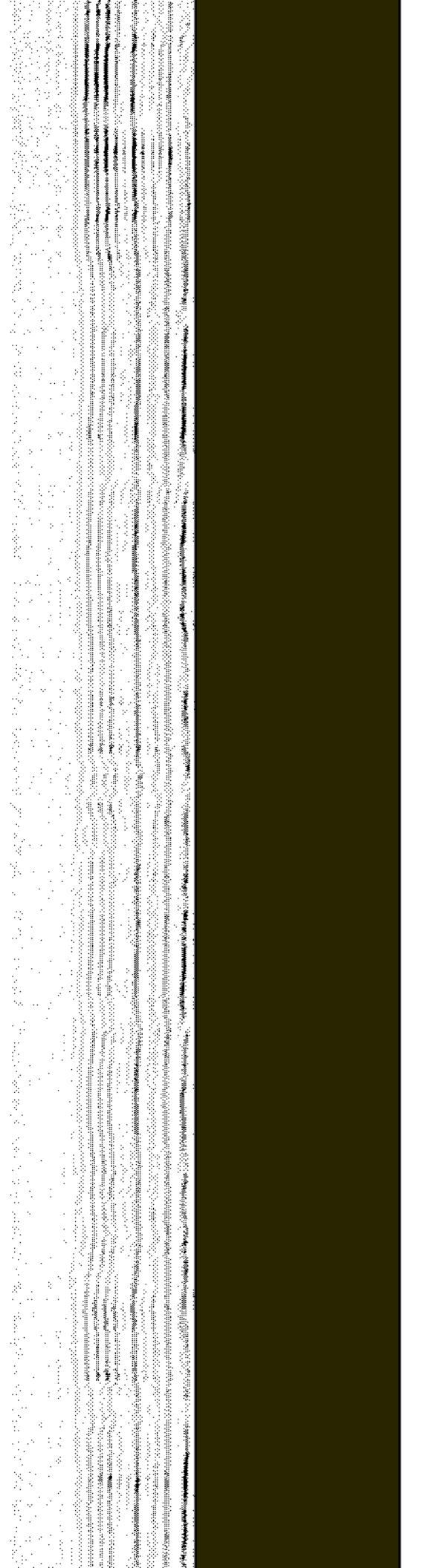
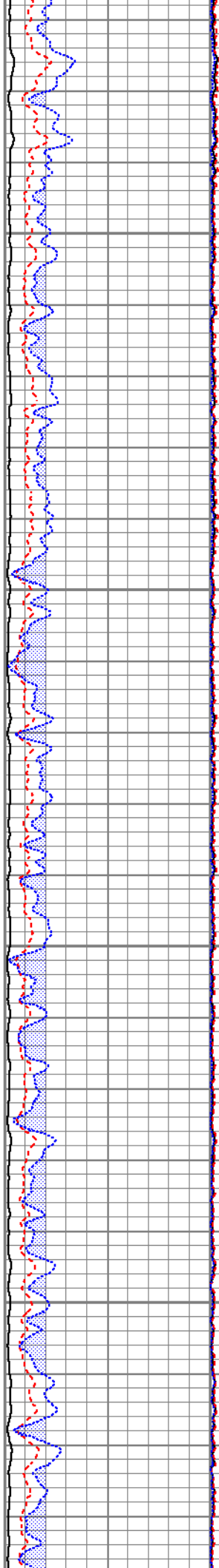


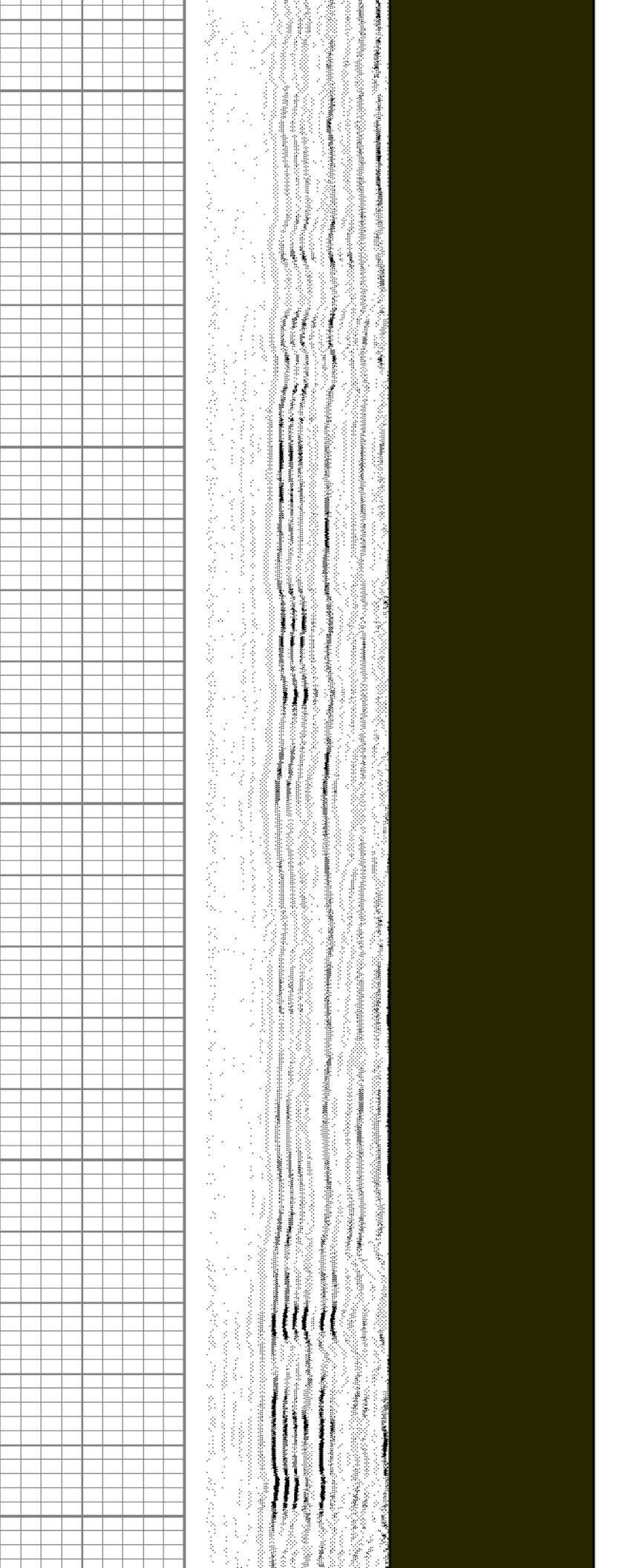
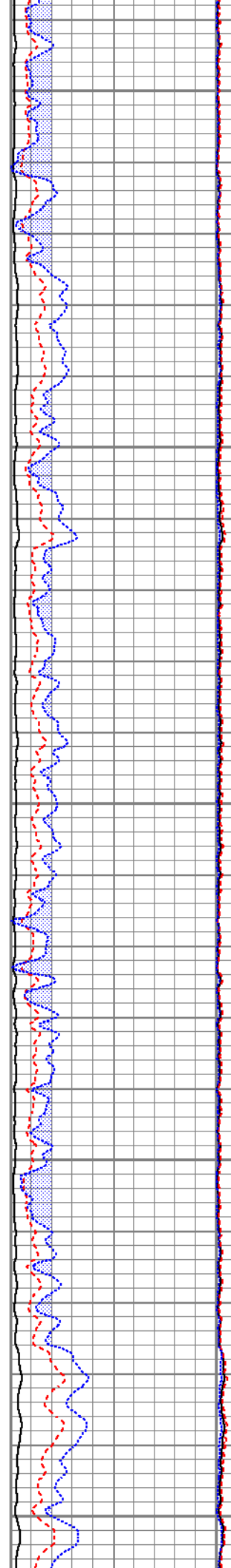
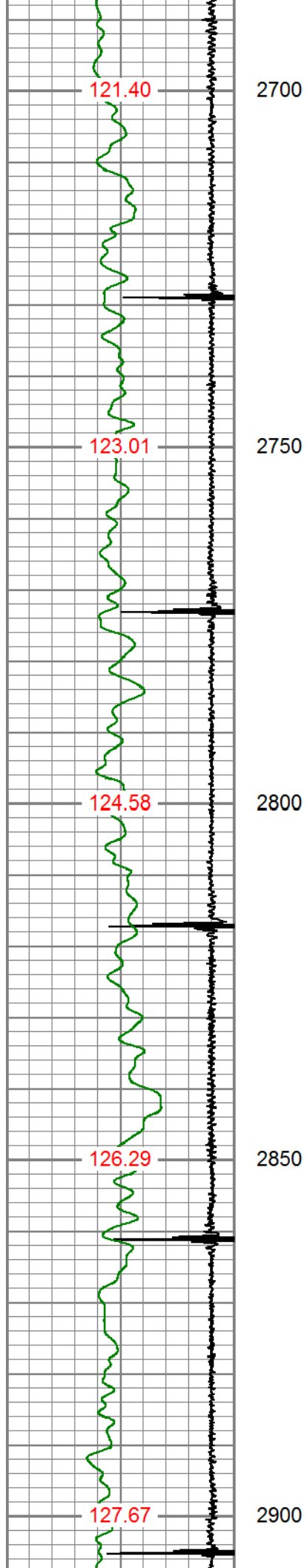
114.88 2500

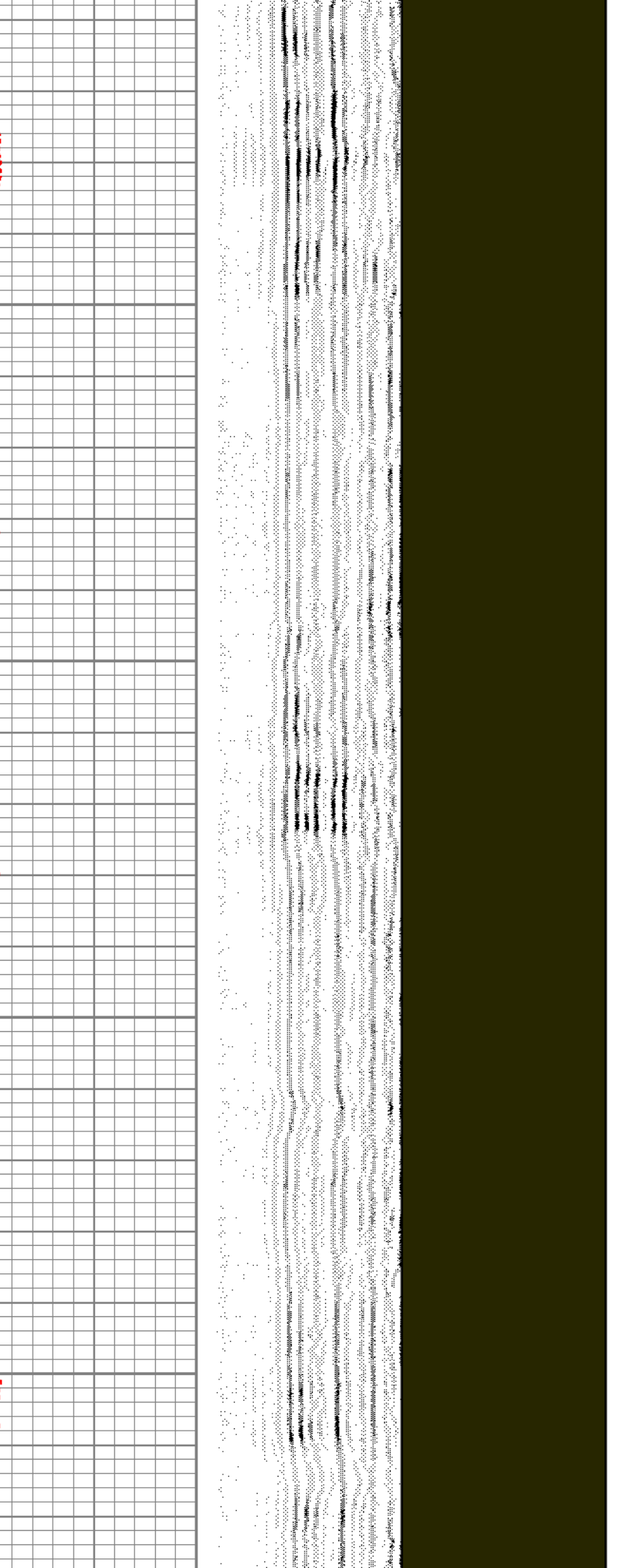
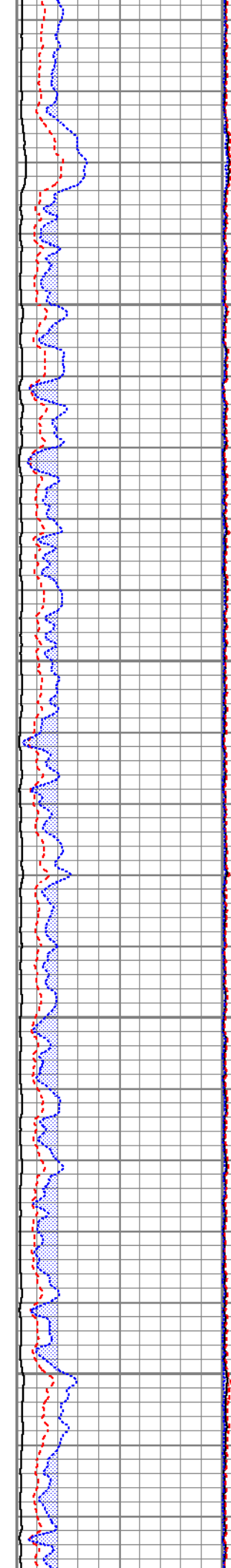
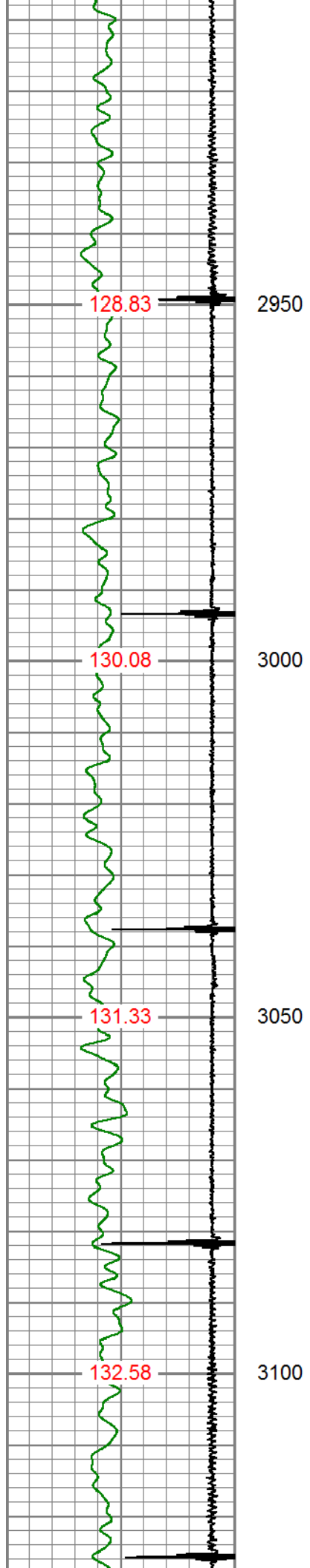
116.42 2550

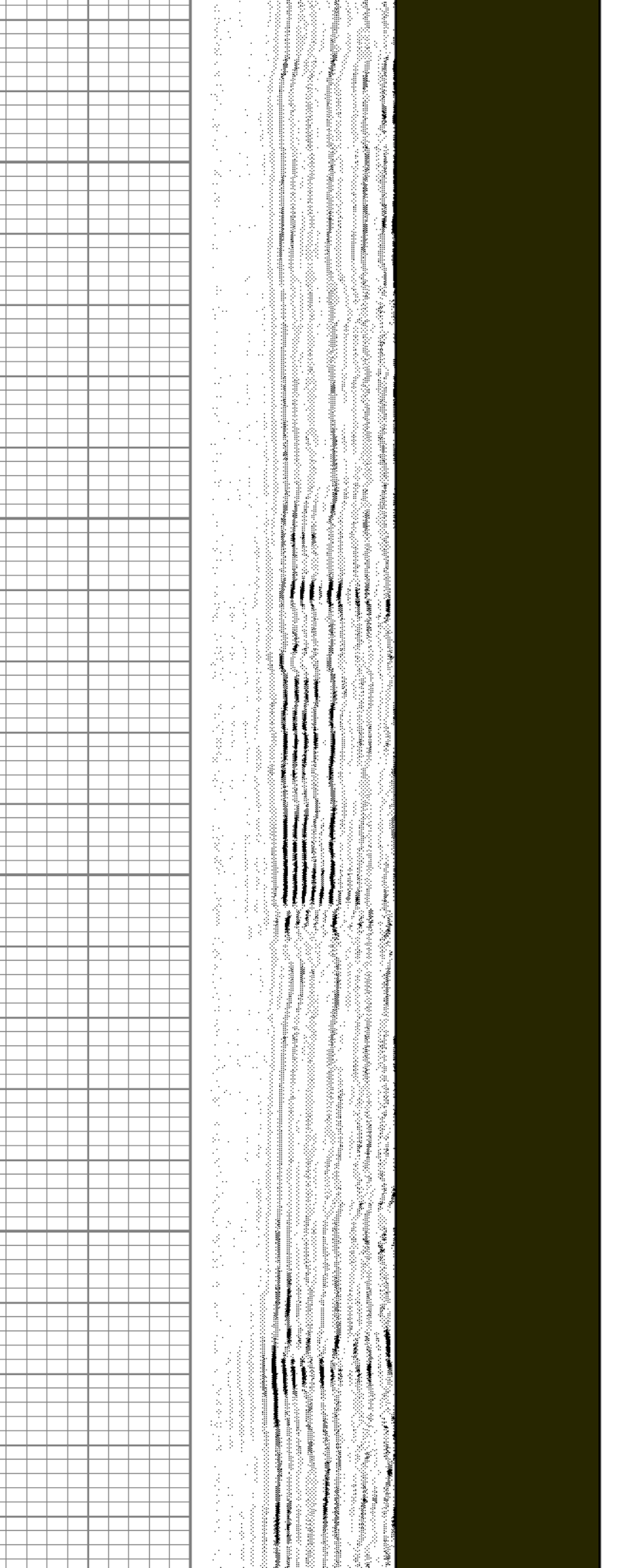
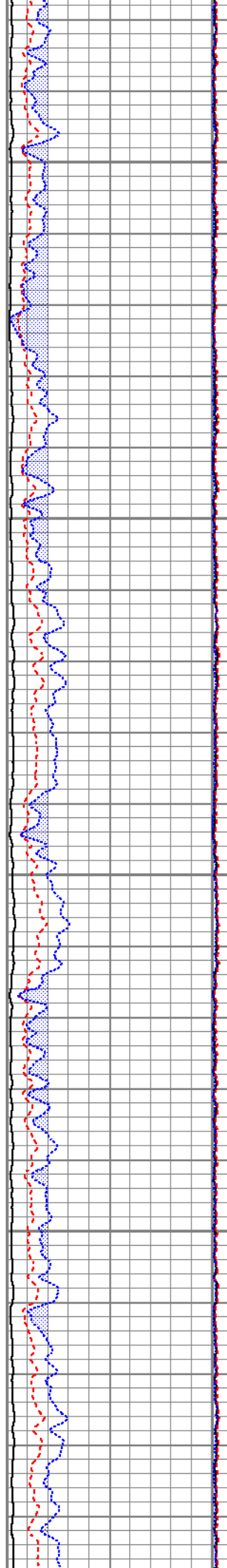
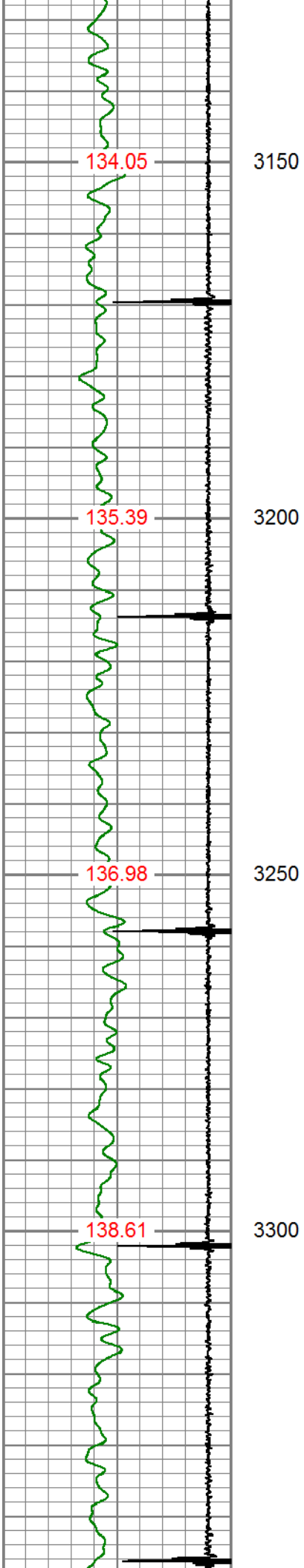
118.13 2600

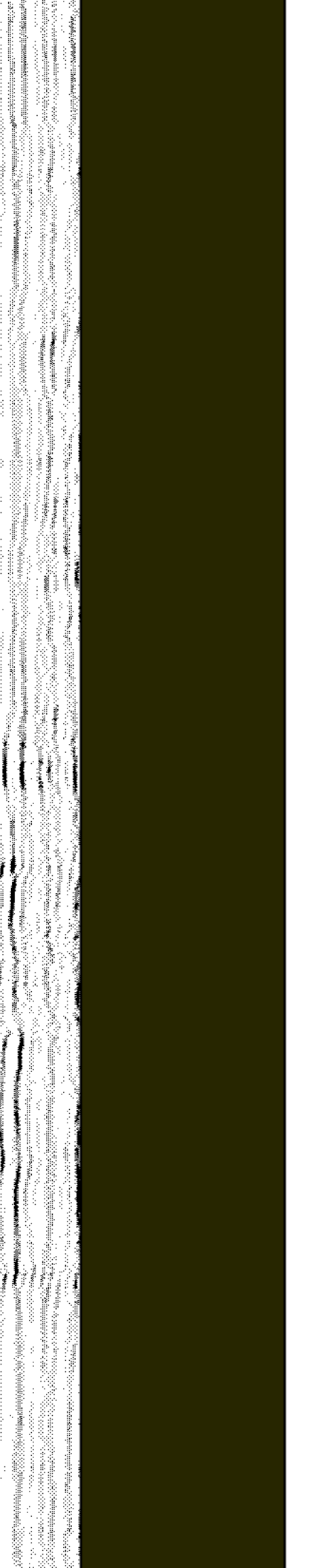
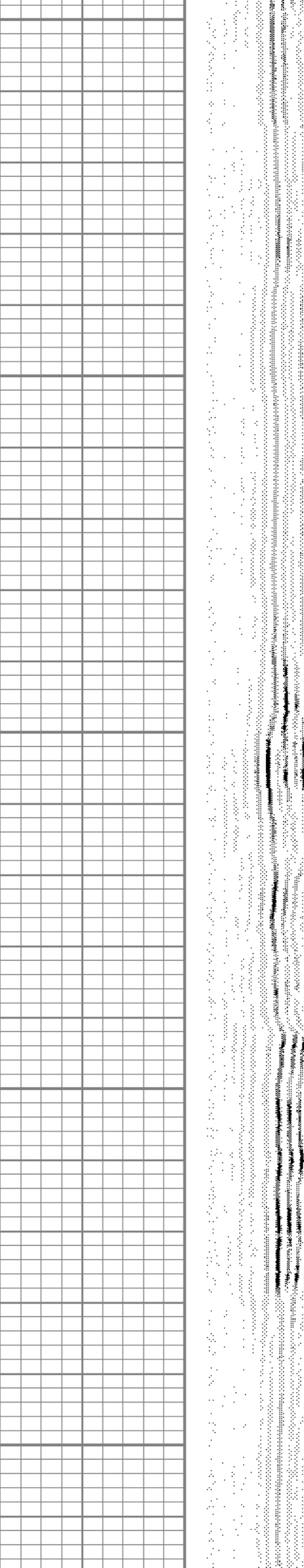
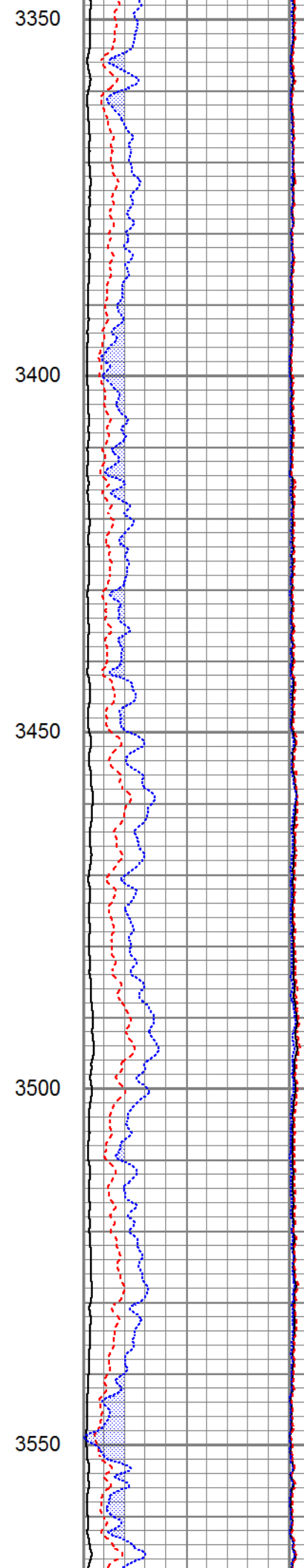
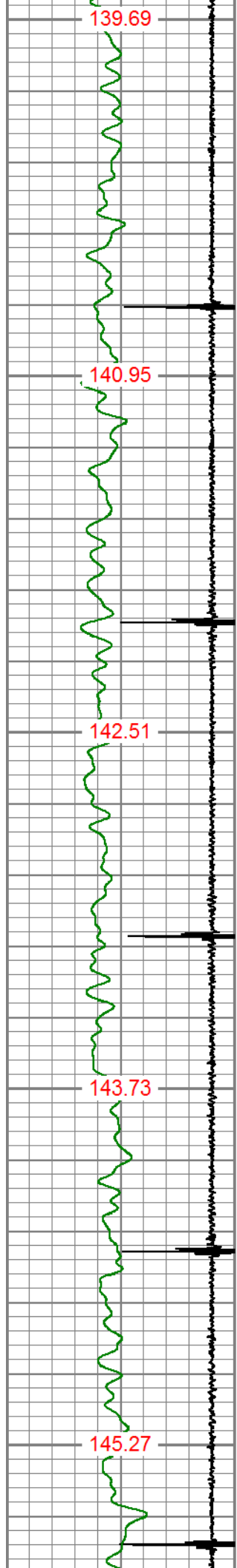
119.76 2650

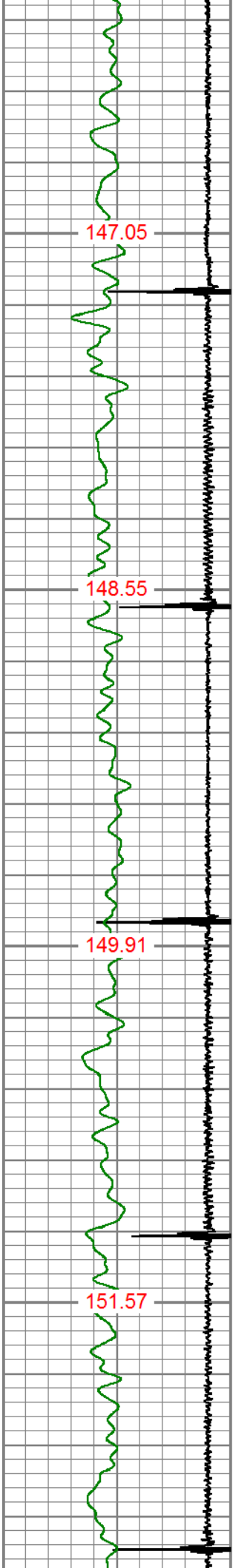










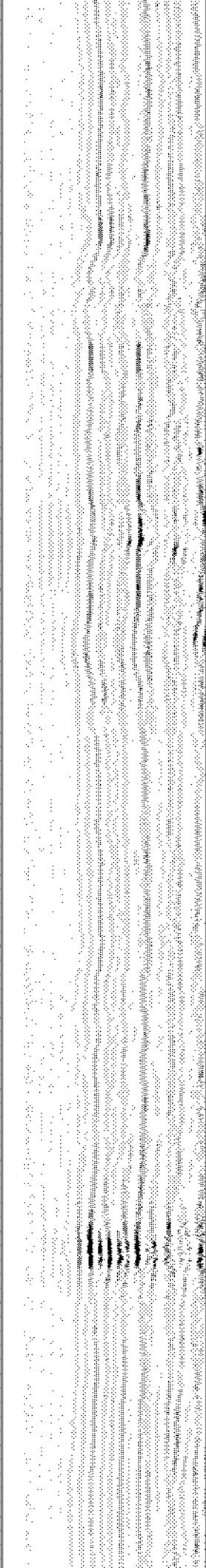
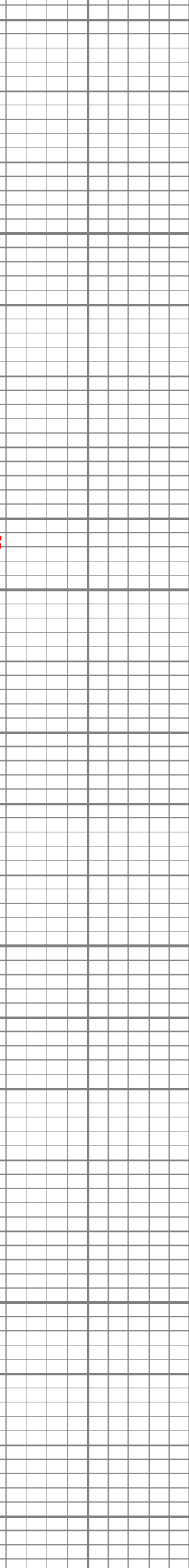
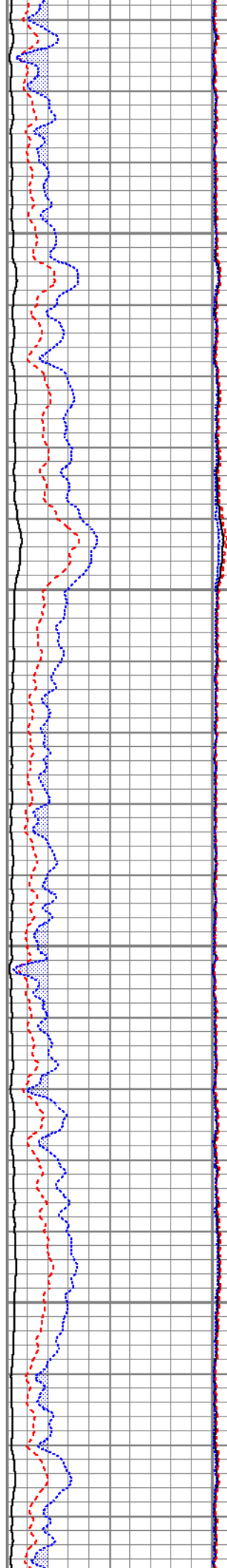


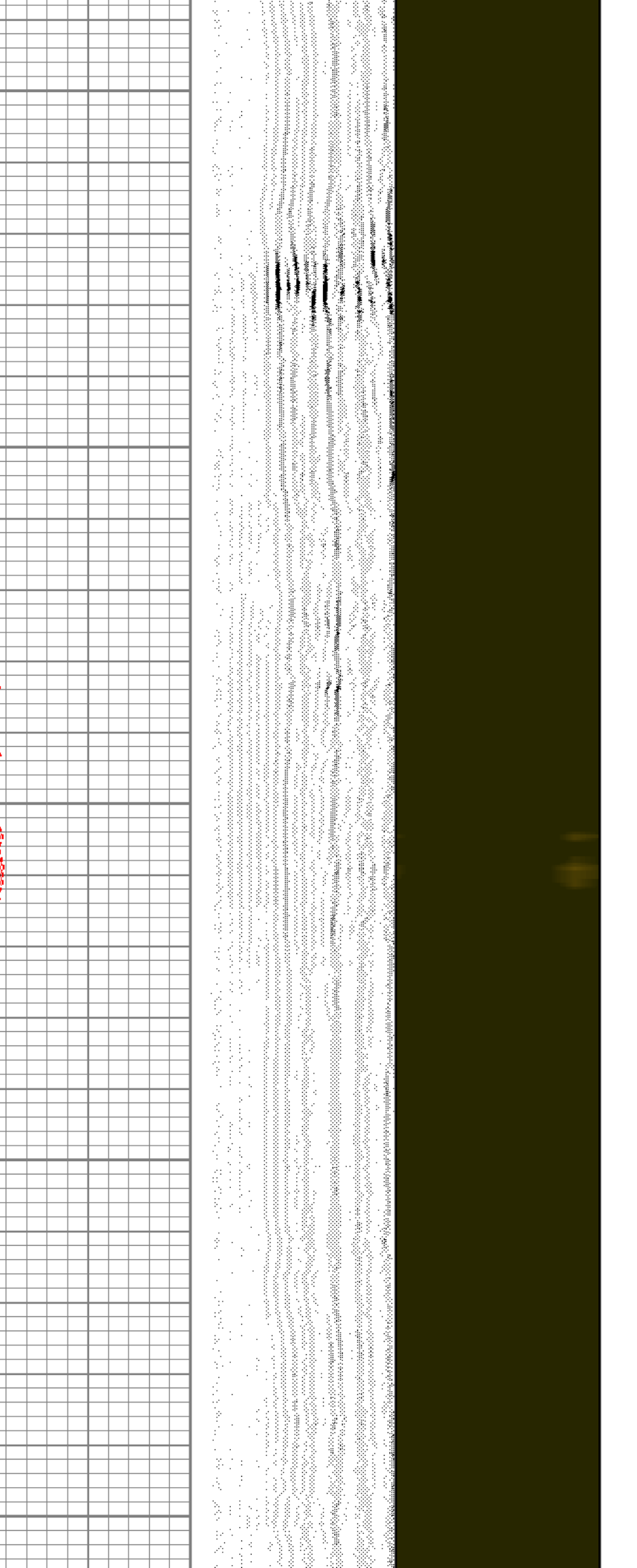
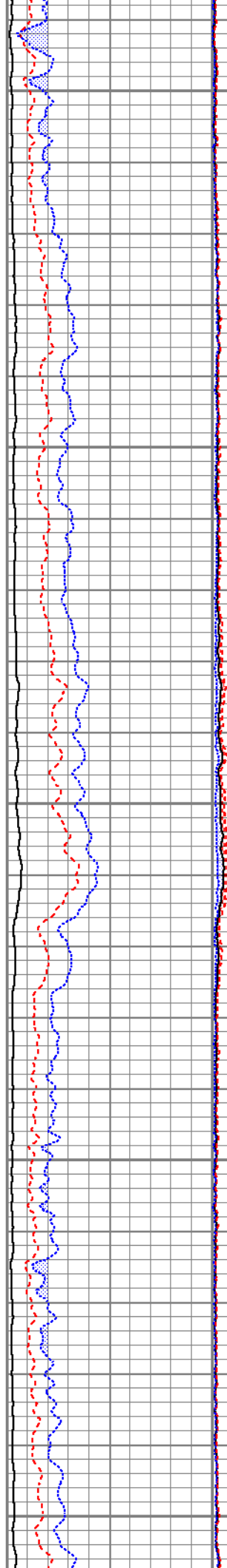
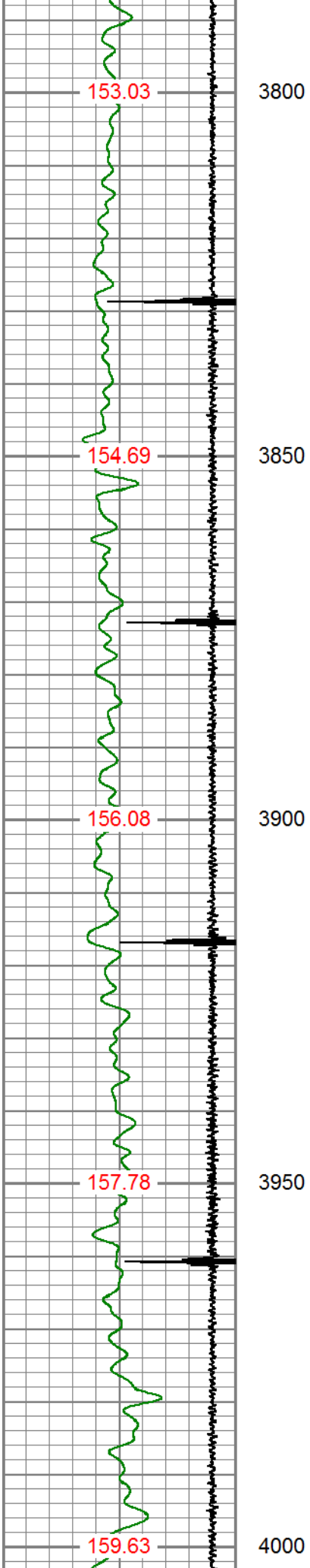
3600

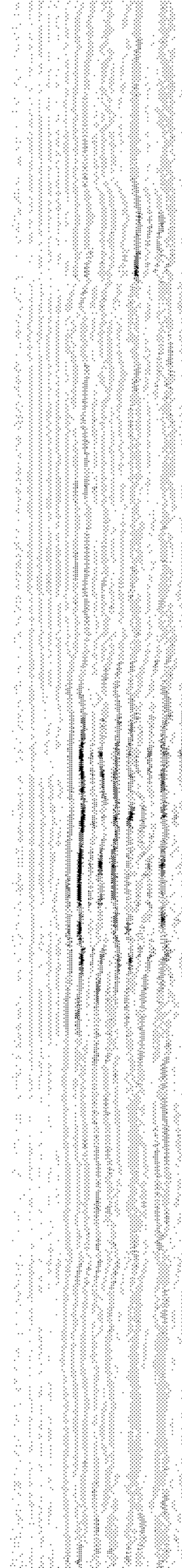
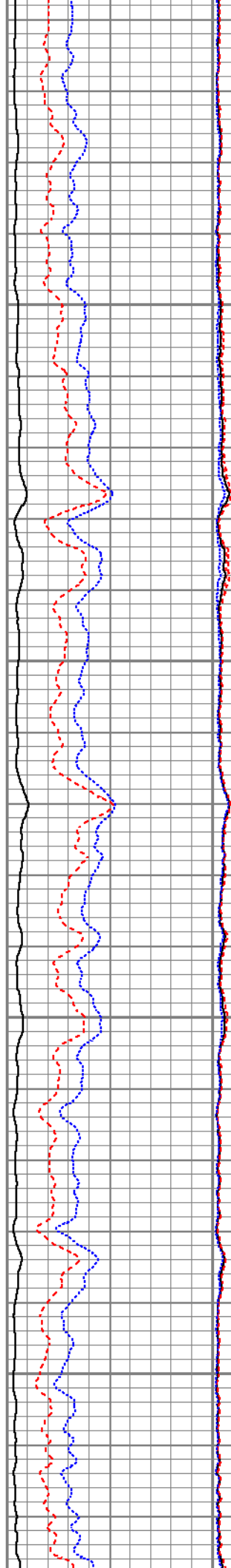
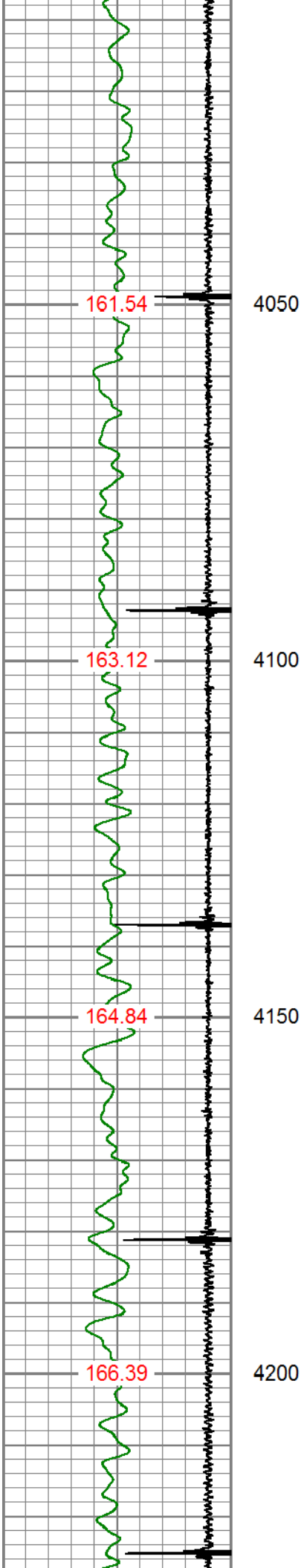
3650

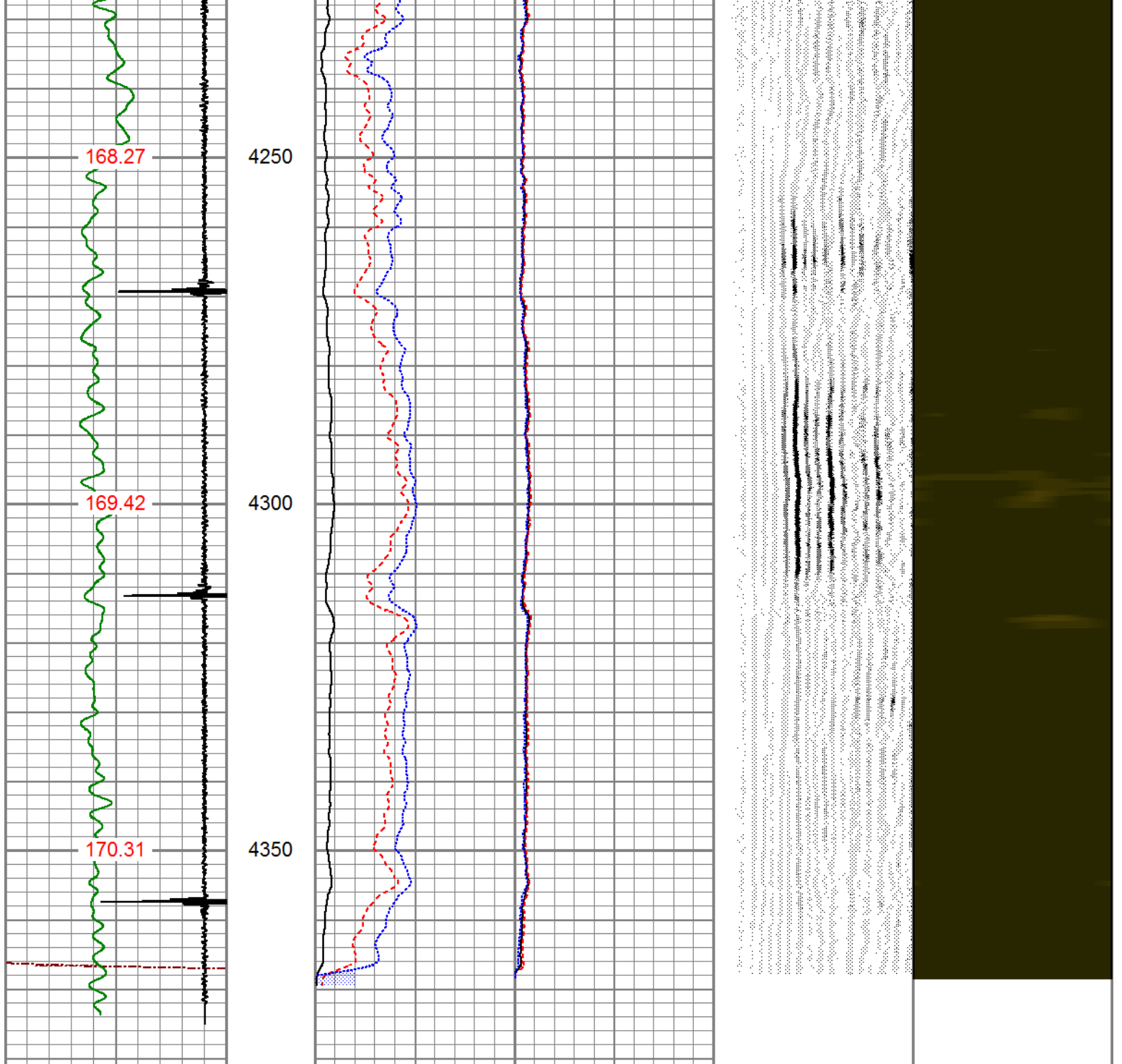
3700

3750









3Ft Travel Time		
255	(usec)	155
-----		
-9	Collar Locator	1
Gamma Ray		
0	(GAPI)	200
TEMP		
(degF)		

3' Amplitude		
0	(mV)	100
-----		
3' Amplified Amplitude X 5		
0	(mV)	20
-----		
1	Bond Index	0
-----		
Sector Amplitude Average		
0		150
-----		
Sector Amplitude Maximum		
0		150
-----		
Sector Amplitude Minimum		
0		150
-----		

VDL		
200	(usec)	1200

1	Sector Map	8
---	------------	---

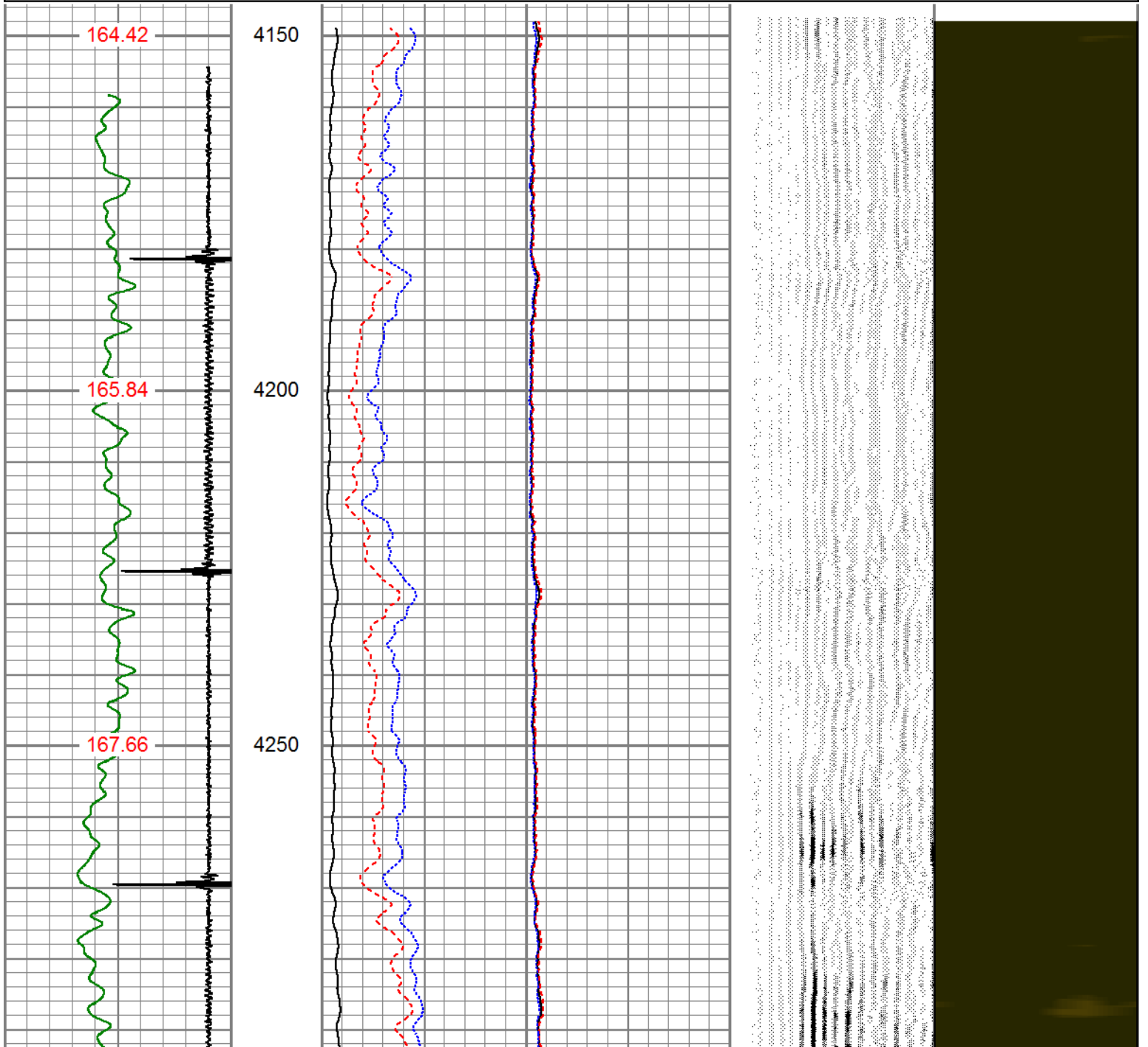


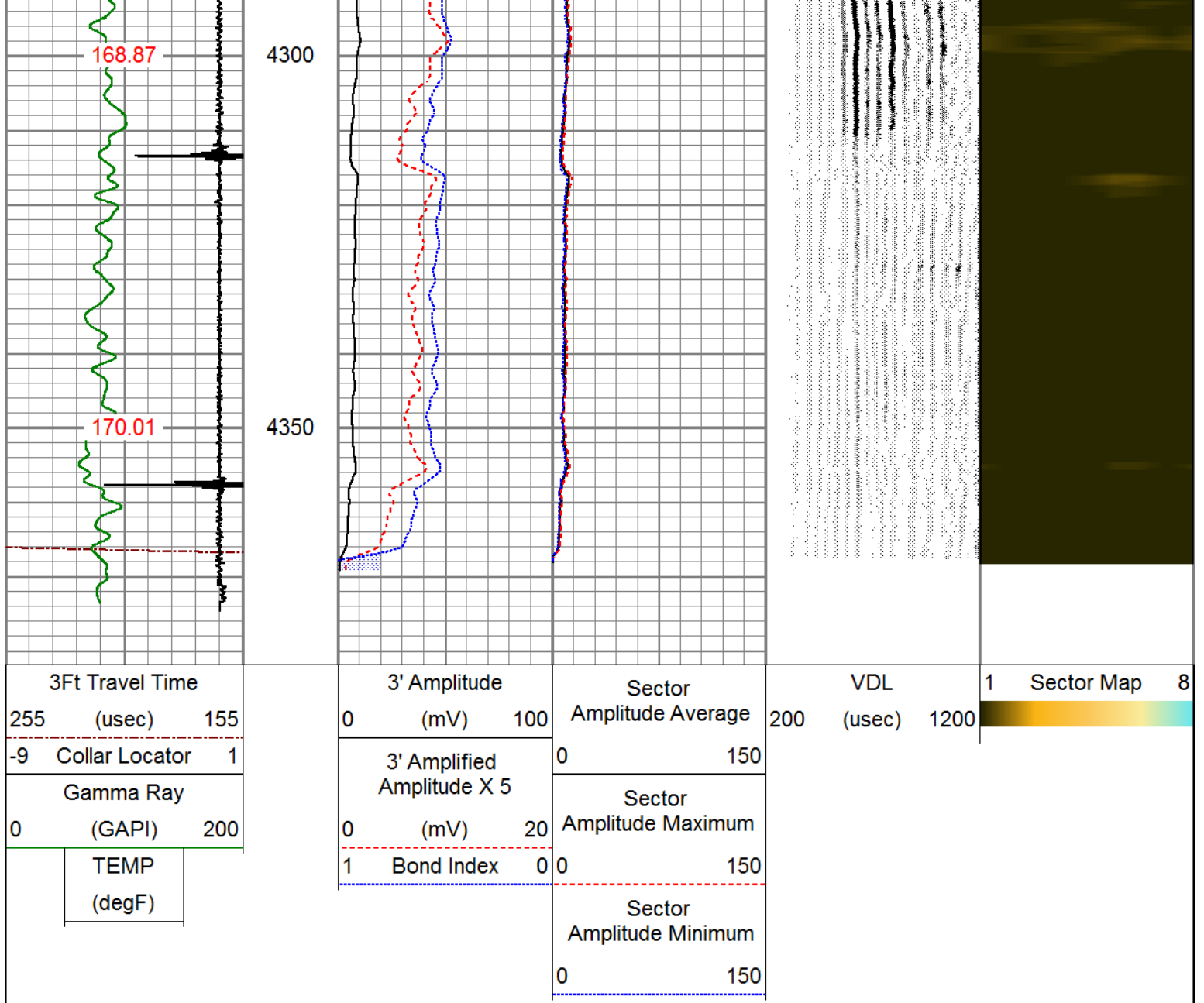
REPEAT SECTION

ZERO DCI APPLIED AT SURFACE

Database File 12-19-18\_1.db  
 Dataset Pathname pass8  
 Presentation Format pinr\_scbl  
 Dataset Creation Wed Dec 19 08:18:04 2018  
 Charted by Depth in Feet scaled 1:240

3Ft Travel Time 255 (usec) 155	3' Amplitude 0 (mV) 100	Sector Amplitude Average	200	VDL (usec) 1200	1 Sector Map 8	
-9 Collar Locator 1		3' Amplified Amplitude X 5	0 150			
Gamma Ray 0 (GAPI) 200		0 (mV) 20	Sector Amplitude Maximum	0 150		
TEMP (degF)		1 Bond Index 0	Sector Amplitude Minimum	0 150		





### Calibration Report

Database File 12-19-18\_1.db  
 Dataset Pathname pass8  
 Dataset Creation Wed Dec 19 08:18:04 2018

### Gamma Ray Calibration Report

Serial Number: 140181  
 Tool Model: 275 Probe GCT  
 Performed: Sun Oct 21 21:49:08 2018

Calibrator Value: 1.0 GAPI

Background Reading: 0.0 cps  
 Calibrator Reading: 1.0 cps

Sensitivity: 0.6800 GAPI/cps

### Segmented Cement Bond Log Calibration Report

Serial Number: FW1411-67-T  
 Tool Model: RBL-DCT

Calibration Casing Diameter: 4.500 in  
 Calibration Depth: 910.500 ft

Master Calibration, performed Wed Dec 19 08:08:33 2018:

	Raw (v)		Calibrated (mv)		Results	
	Zero	Cal	Zero	Cal	Gain	Offset
3'	0.000	0.818	0.700	81.196	98.432	0.700
CAL	0.000	1.567				
5'	0.000	0.837	0.700	81.196	96.217	0.700
SUM						
S1	0.000	0.773	0.000	100.000	129.285	0.000
S2	0.000	0.778	0.000	100.000	128.460	0.000
S3	0.000	0.790	0.000	100.000	126.541	0.000
S4	0.000	0.943	0.000	100.000	106.022	0.000
S5	0.000	1.143	0.000	100.000	87.456	0.000
S6	0.000	1.085	0.000	100.000	92.133	0.000
S7	0.000	0.931	0.000	100.000	107.387	0.000
S8	0.000	0.807	0.000	100.000	123.952	0.000

Air Zero Calibration, performed Thu Nov 29 15:51:21 2018:

	Raw (v)		Calibrated (v)		Results	
	Zero		Zero		Offset	
3'	0.000		0.000			0.000
5'	0.000		0.000			0.000
SUM						
S1	0.000		0.000			0.000
S2	0.000		0.000			0.000
S3	0.000		0.000			0.000
S4	0.000		0.000			0.000
S5	0.000		0.000			0.000
S6	0.000		0.000			0.000
S7	0.000		0.000			0.000
S8	0.000		0.000			0.000

Temperature Calibration Report

Serial Number: FW1411-67-T  
 Tool Model: RBL-DCT  
 Performed: (Not Performed)

	Reference	Reading
Low Reference:	0.00 degF	0.00 degF
High Reference:	1.00 degF	1.00 degF

Gain: 1.00  
 Offset: 0.00  
 Delta Spacing: 1



**PIONEER**

Pioneer Energy Services

Company ANADARKO PETROLEUM CORP  
 Well NRC 5-9  
 Field WATTENBERG  
 County WELD  
 State COLORADO

