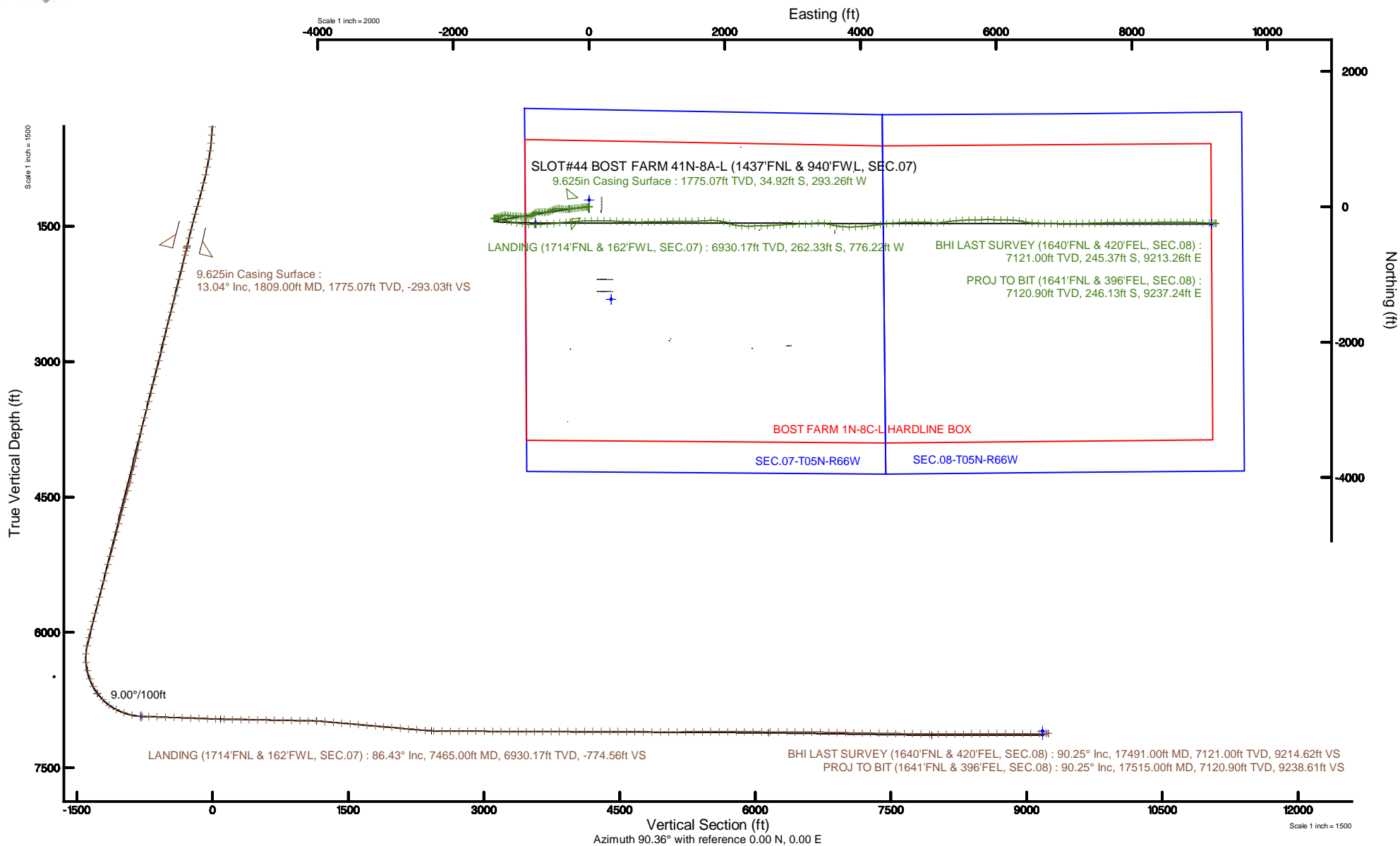


# SRC ENERGY

Location: COLORADO Slot: SLOT#44 BOST FARM 41N-8A-L (1437'FNL & 940'FWL, SEC.07)  
 Field: WELD COUNTY (NAD83,TRUE NORTH) Well: BOST FARM 41N-8A-L  
 Facility: SEC.07-T05N-R66W Wellbore: BOST FARM 41N-8A-L PWB

Plot reference wellpath is BOST FARM 41N-8A-L (REV-B.0) PWP	Grid System: NAD83 / Lambert Colorado SP, Northern Zone (501), US feet
True vertical depths are referenced to PRECISION 462 (20') (RKB)	North Reference: True north
Measured depths are referenced to PRECISION 462 (20') (RKB)	Scale: True distance
PRECISION 462 (20') (RKB) to Mean Sea Level: 4901 feet	Depths are in feet
Mean Sea Level to Mud line (At Slot: SLOT#44 BOST FARM 41N-8A-L (1437'FNL & 940'FWL, SEC.07)): 0 feet	Created by: hanisab on 2019-02-04
Coordinates are in feet referenced to Slot	Database: WellArchitectDB





# Actual Wellpath Report

BOST FARM 41N-8A-L AWP

Page 1 of 10



## REFERENCE WELLPATH IDENTIFICATION

Operator	SRC ENERGY	Slot	SLOT#44 BOST FARM 41N-8A-L (1437'FNL & 940'FWL, SEC.07)
Area	COLORADO	Well	BOST FARM 41N-8A-L
Field	WELD COUNTY (NAD83,TRUE NORTH)	Wellbore	BOST FARM 41N-8A-L AWB
Facility	SEC.07-T05N-R66W		

## REPORT SETUP INFORMATION

Projection System	NAD83 / Lambert Colorado SP, Northern Zone (501), US feet	Software System	WellArchitect® 5.1
North Reference	True	User	Hanisab
Scale	0.999961	Report Generated	2/4/2019 at 11:16:32 PM
Convergence at slot	0.43° East	Database/Source file	WellArchitectDB/BOST_FARM_41N-8A-L_AWP.xml

## WELLPATH LOCATION

	Local coordinates		Grid coordinates		Geographic coordinates	
	North[ft]	East[ft]	Easting[US ft]	Northing[US ft]	Latitude	Longitude
Slot Location	1368.71	-324.70	3186826.54	1395675.94	40°25'03.331"N	104°49'44.447"W
Facility Reference Pt			3187161.59	1394309.79	40°24'49.806"N	104°49'40.249"W
Field Reference Pt			3171284.48	1426358.81	40°30'07.643"N	104°53'02.634"W

## WELLPATH DATUM

Calculation method	Minimum curvature	PRECISION 462 (20') (RKB) to Facility Vertical Datum	4901.00ft
Horizontal Reference Pt	Slot	PRECISION 462 (20') (RKB) to Mean Sea Level	4901.00ft
Vertical Reference Pt	PRECISION 462 (20') (RKB)	PRECISION 462 (20') (RKB) to Mud Line at Slot (SLOT#44 BOST FARM 41N-8A-L (1437'FNL & 940'FWL, SEC.07))	4901.00ft
MD Reference Pt	PRECISION 462 (20') (RKB)	Section Origin	N 0.00, E 0.00 ft
Field Vertical Reference	Mean Sea Level	Section Azimuth	90.36°



# Actual Wellpath Report

BOST FARM 41N-8A-L AWP

Page 2 of 10



## REFERENCE WELLPATH IDENTIFICATION

Operator	SRC ENERGY	Slot	SLOT#44 BOST FARM 41N-8A-L (1437'FNL & 940'FWL, SEC.07)
Area	COLORADO	Well	BOST FARM 41N-8A-L
Field	WELD COUNTY (NAD83,TRUE NORTH)	Wellbore	BOST FARM 41N-8A-L AWB
Facility	SEC.07-T05N-R66W		

## WELLPATH DATA (193 stations) † = interpolated/extrapolated station

MD [ft]	Inclination [°]	Azimuth [°]	TVD [ft]	Vert Sect [ft]	North [ft]	East [ft]	DLS [°/100ft]	Comments
0.00†	0.000	155.070	0.00	0.00	0.00	0.00	0.00	
20.00	0.000	155.070	20.00	0.00	0.00	0.00	0.00	
137.00	0.880	155.070	137.00	0.38	-0.81	0.38	0.75	
226.00	0.740	139.360	225.99	1.05	-1.87	1.04	0.29	
309.00	1.590	227.680	308.97	0.56	-3.05	0.54	2.09	
399.00	2.720	245.240	398.91	-2.29	-4.79	-2.32	1.44	
489.00	3.830	272.520	488.77	-7.23	-5.55	-7.27	2.09	
579.00	6.320	275.840	578.41	-15.17	-4.91	-15.20	2.78	
669.00	8.310	270.150	667.67	-26.60	-4.39	-26.63	2.35	
759.00	10.470	265.300	756.46	-41.25	-5.05	-41.29	2.55	
849.00	11.380	263.230	844.83	-58.21	-6.76	-58.25	1.10	
939.00	12.840	263.610	932.82	-76.95	-8.92	-77.01	1.62	
1029.00	14.490	263.110	1020.27	-98.06	-11.39	-98.13	1.84	
1119.00	15.300	263.030	1107.25	-121.00	-14.18	-121.09	0.90	
1209.00	15.060	262.630	1194.11	-144.37	-17.12	-144.48	0.29	
1299.00	14.850	263.150	1281.06	-167.39	-19.99	-167.52	0.28	
1389.00	14.860	263.580	1368.05	-190.30	-22.66	-190.44	0.12	
1479.00	14.830	263.520	1455.05	-213.19	-25.25	-213.35	0.04	
1569.00	14.290	263.150	1542.16	-235.65	-27.88	-235.83	0.61	
1659.00	14.170	262.910	1629.40	-257.59	-30.56	-257.79	0.15	
1749.00	13.860	263.060	1716.72	-279.21	-33.22	-279.42	0.35	
1759.00	13.700	262.820	1726.43	-281.57	-33.51	-281.78	1.70	
1854.00	12.440	263.720	1818.97	-302.88	-36.04	-303.12	1.34	
1948.00	14.160	267.100	1910.44	-324.42	-37.73	-324.67	2.01	
2041.00	13.780	269.270	2000.69	-346.85	-38.45	-347.10	0.70	
2134.00	14.370	274.750	2090.90	-369.43	-37.63	-369.68	1.57	
2227.00	13.980	279.000	2181.07	-392.05	-34.92	-392.28	1.19	
2319.00	14.200	279.200	2270.31	-414.19	-31.38	-414.39	0.24	
2412.00	14.170	275.280	2360.47	-436.80	-28.50	-436.99	1.03	
2504.00	14.250	267.450	2449.67	-459.33	-27.97	-459.51	2.09	



# Actual Wellpath Report

BOST FARM 41N-8A-L AWP

Page 3 of 10



## REFERENCE WELLPATH IDENTIFICATION

Operator	SRC ENERGY	Slot	SLOT#44 BOST FARM 41N-8A-L (1437'FNL & 940'FWL, SEC.07)
Area	COLORADO	Well	BOST FARM 41N-8A-L
Field	WELD COUNTY (NAD83,TRUE NORTH)	Wellbore	BOST FARM 41N-8A-L AWB
Facility	SEC.07-T05N-R66W		

## WELLPATH DATA (193 stations)

MD [ft]	Inclination [°]	Azimuth [°]	TVD [ft]	Vert Sect [ft]	North [ft]	East [ft]	DLS [°/100ft]	Comments
2597.00	14.570	260.750	2539.75	-482.29	-30.36	-482.50	1.82	
2691.00	14.690	250.950	2630.71	-505.20	-36.15	-505.43	2.63	
2784.00	14.480	242.730	2720.73	-526.62	-45.33	-526.92	2.24	
2876.00	14.290	244.630	2809.84	-547.04	-55.47	-547.40	0.55	
2968.00	14.420	253.280	2898.98	-568.22	-63.63	-568.63	2.33	
3062.00	14.430	254.010	2990.02	-590.65	-70.22	-591.10	0.19	
3155.00	14.300	255.140	3080.11	-612.85	-76.36	-613.34	0.33	
3247.00	14.310	264.460	3169.27	-635.13	-80.37	-635.64	2.50	
3340.00	14.460	267.340	3259.35	-658.15	-82.02	-658.68	0.79	
3434.00	14.340	272.740	3350.41	-681.51	-82.01	-682.03	1.43	
3526.00	14.310	274.770	3439.55	-704.23	-80.52	-704.75	0.55	
3620.00	14.440	271.710	3530.60	-727.53	-79.20	-728.04	0.82	
3714.00	14.460	268.880	3621.63	-750.97	-79.08	-751.49	0.75	
3807.00	15.200	252.770	3711.57	-774.21	-82.92	-774.75	4.49	
3899.00	14.520	233.700	3800.55	-794.98	-93.33	-795.58	5.34	
3992.00	14.320	228.820	3890.62	-812.94	-107.80	-813.63	1.32	
4085.00	14.400	234.380	3980.72	-830.90	-122.11	-831.69	1.48	
4178.00	13.290	243.640	4071.03	-849.81	-133.59	-850.67	2.66	
4272.00	14.490	256.280	4162.30	-870.88	-141.18	-871.78	3.46	
4365.00	14.150	257.440	4252.41	-893.24	-146.41	-894.18	0.48	
4458.00	14.480	265.460	4342.53	-915.91	-149.81	-916.87	2.16	
4553.00	15.310	265.950	4434.34	-940.25	-151.63	-941.22	0.88	
4647.00	14.930	272.830	4525.09	-964.72	-151.91	-965.69	1.95	
4741.00	15.050	282.150	4615.90	-988.77	-148.74	-989.72	2.57	
4833.00	15.250	286.210	4704.71	-1012.10	-142.85	-1013.02	1.17	
4928.00	15.160	274.490	4796.41	-1036.51	-138.39	-1037.40	3.23	
5021.00	15.200	263.130	4886.18	-1060.74	-138.90	-1061.64	3.19	
5115.00	14.620	262.120	4977.02	-1084.71	-142.00	-1085.62	0.68	
5208.00	14.230	274.590	5067.11	-1107.73	-142.69	-1108.65	3.36	
5302.00	15.210	282.150	5158.03	-1131.33	-139.17	-1132.22	2.29	



# Actual Wellpath Report

BOST FARM 41N-8A-L AWP

Page 4 of 10



## REFERENCE WELLPATH IDENTIFICATION

Operator	SRC ENERGY	Slot	SLOT#44 BOST FARM 41N-8A-L (1437'FNL & 940'FWL, SEC.07)
Area	COLORADO	Well	BOST FARM 41N-8A-L
Field	WELD COUNTY (NAD83,TRUE NORTH)	Wellbore	BOST FARM 41N-8A-L AWB
Facility	SEC.07-T05N-R66W		

## WELLPATH DATA (193 stations) † = interpolated/extrapolated station

MD [ft]	Inclination [°]	Azimuth [°]	TVD [ft]	Vert Sect [ft]	North [ft]	East [ft]	DLS [°/100ft]	Comments
5395.00	15.110	279.410	5247.79	-1155.24	-134.62	-1156.11	0.78	
5491.00	15.090	280.490	5340.48	-1179.90	-130.30	-1180.74	0.29	
5584.00	15.300	282.940	5430.23	-1203.79	-125.35	-1204.60	0.73	
5676.00	15.190	265.220	5519.04	-1227.65	-123.64	-1228.45	5.05	
5769.00	15.050	257.310	5608.83	-1251.55	-127.30	-1252.38	2.22	
5862.00	15.110	258.890	5698.63	-1275.19	-132.29	-1276.05	0.45	
5955.00	15.180	256.290	5788.40	-1298.89	-137.51	-1299.77	0.73	
6047.00	15.260	251.010	5877.18	-1321.99	-144.31	-1322.93	1.51	
6140.00	14.800	249.140	5966.99	-1344.61	-152.52	-1345.60	0.72	
6233.00	14.910	249.760	6056.89	-1366.89	-160.89	-1367.92	0.21	
6327.00	13.490	246.690	6148.01	-1388.25	-169.41	-1389.34	1.71	
6420.00	2.490	216.520	6239.99	-1399.41	-175.35	-1400.54	12.26	
6512.00	5.910	81.130	6331.85	-1395.91	-176.22	-1397.05	8.56	
6605.00	13.430	82.650	6423.46	-1380.46	-174.10	-1381.58	8.09	
6697.00	19.290	101.840	6511.76	-1354.94	-175.86	-1356.07	8.59	
6791.00	27.620	104.000	6597.92	-1318.49	-184.33	-1319.67	8.91	
6883.00	36.700	103.930	6675.72	-1270.94	-196.13	-1272.20	9.87	
6976.00	45.250	104.090	6745.87	-1211.73	-210.89	-1213.08	9.19	
7070.00	54.580	102.640	6806.33	-1141.73	-227.43	-1143.18	9.99	
7162.00	63.500	98.630	6853.63	-1064.18	-241.84	-1065.72	10.39	
7255.00	70.390	97.820	6890.03	-979.46	-254.06	-981.08	7.45	
7347.00	77.750	93.090	6915.27	-891.43	-262.40	-893.09	9.40	
7440.00	85.900	87.990	6928.50	-799.48	-263.22	-801.15	10.31	
7465.00†	86.432	87.912	6930.17	-774.56	-262.33	-776.22	2.15	LANDING (1714'FNL & 162'FWL, SEC.07)
7533.00	87.880	87.700	6933.54	-706.71	-259.73	-708.36	2.15	
7627.00	88.180	87.630	6936.77	-612.87	-255.90	-614.49	0.33	
7721.00	88.030	85.820	6939.88	-519.12	-250.54	-520.70	1.93	
7814.00	88.090	82.960	6943.03	-426.69	-241.45	-428.21	3.07	
7908.00	87.940	82.990	6946.29	-333.52	-229.96	-334.97	0.16	
8001.00	87.910	85.450	6949.65	-241.12	-220.60	-242.51	2.64	



# Actual Wellpath Report

BOST FARM 41N-8A-L AWP

Page 5 of 10



## REFERENCE WELLPATH IDENTIFICATION

Operator	SRC ENERGY	Slot	SLOT#44 BOST FARM 41N-8A-L (1437'FNL & 940'FWL, SEC.07)
Area	COLORADO	Well	BOST FARM 41N-8A-L
Field	WELD COUNTY (NAD83,TRUE NORTH)	Wellbore	BOST FARM 41N-8A-L AWB
Facility	SEC.07-T05N-R66W		

## WELLPATH DATA (193 stations)

MD [ft]	Inclination [°]	Azimuth [°]	TVD [ft]	Vert Sect [ft]	North [ft]	East [ft]	DLS [°/100ft]	Comments
8093.00	88.060	87.150	6952.89	-149.41	-214.67	-150.77	1.85	
8186.00	87.780	87.970	6956.26	-56.59	-210.71	-57.91	0.93	
8279.00	88.000	88.260	6959.69	36.28	-207.66	34.98	0.39	
8372.00	88.800	88.890	6962.29	129.22	-206.16	127.92	1.95	
8464.00	88.920	91.510	6964.12	221.19	-207.28	219.89	1.77	
8556.00	89.020	92.230	6965.77	313.15	-210.28	311.83	0.79	
8649.00	88.870	94.230	6967.48	406.01	-215.52	404.66	2.16	
8743.00	88.970	92.760	6969.25	499.85	-221.25	498.47	1.57	
8836.00	89.030	91.180	6970.88	592.79	-224.45	591.40	1.70	
8929.00	89.120	90.490	6972.38	685.78	-225.80	684.37	0.75	
9023.00	89.000	89.660	6973.92	779.76	-225.92	778.36	0.89	
9117.00	89.030	89.590	6975.54	873.74	-225.31	872.34	0.08	
9210.00	89.090	88.410	6977.06	966.70	-223.69	965.32	1.27	
9303.00	88.660	89.170	6978.89	1059.65	-221.72	1058.28	0.94	
9395.00	87.060	88.120	6982.32	1151.54	-219.55	1150.18	2.08	
9487.00	85.390	88.050	6988.38	1243.26	-216.48	1241.93	1.82	
9581.00	84.990	89.200	6996.26	1336.89	-214.23	1335.57	1.29	
9673.00	84.990	90.150	7004.30	1428.53	-213.71	1427.21	1.03	
9766.00	84.930	90.690	7012.47	1521.17	-214.39	1519.85	0.58	
9859.00	85.020	87.530	7020.62	1613.78	-212.95	1612.47	3.39	
9953.00	84.860	86.500	7028.91	1707.25	-208.08	1705.98	1.10	
10046.00	84.990	89.110	7037.13	1799.79	-204.53	1798.54	2.80	
10139.00	85.170	94.090	7045.12	1892.39	-207.12	1891.13	5.34	
10232.00	84.990	106.060	7053.12	1983.55	-223.29	1982.19	12.82	
10327.00	84.960	109.900	7061.45	2073.73	-252.50	2072.18	4.03	
10420.00	84.920	98.130	7069.68	2163.59	-274.90	2161.90	12.61	
10513.00	85.050	93.250	7077.81	2255.80	-284.08	2254.06	5.23	
10608.00	86.430	89.770	7084.87	2350.50	-286.57	2348.75	3.93	
10701.00	86.370	89.060	7090.71	2443.31	-285.62	2441.56	0.76	
10794.00	89.750	88.370	7093.86	2536.20	-283.54	2534.47	3.71	



# Actual Wellpath Report

BOST FARM 41N-8A-L AWP

Page 6 of 10



## REFERENCE WELLPATH IDENTIFICATION

Operator	SRC ENERGY	Slot	SLOT#44 BOST FARM 41N-8A-L (1437'FNL & 940'FWL, SEC.07)
Area	COLORADO	Well	BOST FARM 41N-8A-L
Field	WELD COUNTY (NAD83,TRUE NORTH)	Wellbore	BOST FARM 41N-8A-L AWB
Facility	SEC.07-T05N-R66W		

## WELLPATH DATA (193 stations)

MD [ft]	Inclination [°]	Azimuth [°]	TVD [ft]	Vert Sect [ft]	North [ft]	East [ft]	DLS [°/100ft]	Comments
10887.00	89.780	87.250	7094.24	2629.11	-279.99	2627.40	1.20	
10982.00	89.630	86.730	7094.73	2723.94	-275.00	2722.27	0.57	
11076.00	89.940	86.230	7095.08	2817.73	-269.23	2816.09	0.63	
11169.00	89.630	87.580	7095.43	2910.55	-264.21	2908.95	1.49	
11262.00	89.690	87.840	7095.98	3003.45	-260.49	3001.87	0.29	
11356.00	89.690	88.540	7096.49	3097.38	-257.52	3095.83	0.74	
11450.00	89.630	90.530	7097.05	3191.37	-256.76	3189.82	2.12	
11543.00	89.540	82.680	7097.72	3284.09	-251.25	3282.58	8.44	
11637.00	89.630	84.840	7098.40	3377.46	-241.04	3376.01	2.30	
11729.00	89.570	97.930	7099.05	3469.24	-243.26	3467.78	14.23	
11822.00	89.660	106.960	7099.67	3560.09	-263.28	3558.50	9.71	
11915.00	90.280	100.940	7099.72	3650.44	-285.69	3648.72	6.51	
12007.00	90.370	92.890	7099.20	3741.76	-296.75	3739.97	8.75	
12100.00	90.460	90.370	7098.53	3834.73	-299.40	3832.92	2.71	
12193.00	90.370	88.500	7097.85	3927.71	-298.48	3925.91	2.01	
12286.00	90.520	85.890	7097.13	4020.56	-293.93	4018.79	2.81	
12378.00	89.720	83.960	7096.94	4112.14	-285.79	4110.43	2.27	
12471.00	89.910	83.180	7097.24	4204.49	-275.38	4202.84	0.86	
12565.00	89.660	83.150	7097.59	4297.75	-264.19	4296.17	0.27	
12660.00	89.690	83.640	7098.13	4392.04	-253.27	4390.54	0.52	
12752.00	89.600	84.670	7098.70	4483.50	-243.90	4482.06	1.12	
12845.00	89.510	85.700	7099.42	4576.12	-236.09	4574.72	1.11	
12938.00	89.570	87.810	7100.17	4668.93	-230.83	4667.57	2.27	
13032.00	89.630	89.980	7100.83	4762.89	-229.01	4761.54	2.31	
13127.00	89.690	90.870	7101.39	4857.88	-229.72	4856.54	0.94	
13220.00	89.420	89.440	7102.11	4950.88	-229.97	4949.53	1.56	
13312.00	90.520	97.410	7102.16	5042.67	-235.46	5041.29	8.75	
13405.00	90.180	87.960	7101.59	5135.49	-239.81	5134.08	10.17	
13500.00	90.650	80.570	7100.90	5229.88	-230.33	5228.54	7.79	
13593.00	90.490	82.820	7099.98	5321.81	-216.90	5320.55	2.43	





# Actual Wellpath Report

BOST FARM 41N-8A-L AWP

Page 7 of 10



## REFERENCE WELLPATH IDENTIFICATION

Operator	SRC ENERGY	Slot	SLOT#44 BOST FARM 41N-8A-L (1437'FNL & 940'FWL, SEC.07)
Area	COLORADO	Well	BOST FARM 41N-8A-L
Field	WELD COUNTY (NAD83,TRUE NORTH)	Wellbore	BOST FARM 41N-8A-L AWB
Facility	SEC.07-T05N-R66W		

## WELLPATH DATA (193 stations)

MD [ft]	Inclination [°]	Azimuth [°]	TVD [ft]	Vert Sect [ft]	North [ft]	East [ft]	DLS [°/100ft]	Comments
13687.00	90.620	86.010	7099.07	5415.29	-207.75	5414.09	3.40	
13780.00	89.780	86.700	7098.74	5508.06	-201.84	5506.90	1.17	
13874.00	89.820	87.740	7099.07	5601.92	-197.28	5600.79	1.11	
13966.00	89.820	88.620	7099.36	5693.85	-194.36	5692.74	0.96	
14061.00	89.780	89.080	7099.69	5788.81	-192.45	5787.72	0.49	
14154.00	89.750	90.080	7100.07	5881.80	-191.77	5880.71	1.08	
14248.00	89.660	90.780	7100.55	5975.80	-192.47	5974.71	0.75	
14342.00	89.600	91.170	7101.16	6069.79	-194.07	6068.69	0.42	
14435.00	89.570	92.110	7101.84	6162.77	-196.73	6161.65	1.01	
14528.00	89.320	92.360	7102.74	6255.71	-200.36	6254.58	0.38	
14620.00	90.180	100.650	7103.14	6347.10	-210.77	6345.90	9.06	
14713.00	89.690	101.400	7103.24	6438.50	-228.56	6437.19	0.96	
14807.00	90.340	93.660	7103.22	6531.69	-240.87	6530.30	8.26	
14900.00	88.980	91.890	7103.77	6624.60	-245.37	6623.19	2.40	
14994.00	88.980	91.730	7105.44	6718.55	-248.34	6717.13	0.17	
15087.00	88.860	90.590	7107.20	6811.53	-250.22	6810.09	1.23	
15179.00	88.920	90.050	7108.98	6903.51	-250.73	6902.07	0.59	
15274.00	88.920	89.970	7110.77	6998.49	-250.75	6997.05	0.08	
15366.00	88.830	89.380	7112.58	7090.47	-250.23	7089.03	0.65	
15459.00	88.860	89.480	7114.45	7183.43	-249.30	7182.01	0.11	
15551.00	89.170	89.070	7116.03	7275.40	-248.14	7273.99	0.56	
15644.00	89.260	88.310	7117.31	7368.36	-246.01	7366.95	0.82	
15736.00	88.980	87.670	7118.72	7460.27	-242.79	7458.89	0.76	
15829.00	89.170	88.680	7120.22	7553.18	-239.83	7551.83	1.10	
15922.00	89.290	88.720	7121.47	7646.14	-237.72	7644.79	0.14	
16015.00	89.260	89.100	7122.65	7739.10	-235.95	7737.77	0.41	
16109.00	89.230	89.800	7123.89	7833.08	-235.05	7831.76	0.75	
16203.00	89.290	90.540	7125.10	7927.07	-235.33	7925.75	0.79	
16296.00	90.220	90.370	7125.50	8020.07	-236.06	8018.74	1.02	
16390.00	90.280	89.510	7125.09	8114.06	-235.97	8112.74	0.92	





# Actual Wellpath Report

BOST FARM 41N-8A-L AWP

Page 8 of 10



## REFERENCE WELLPATH IDENTIFICATION

Operator	SRC ENERGY	Slot	SLOT#44 BOST FARM 41N-8A-L (1437'FNL & 940'FWL, SEC.07)
Area	COLORADO	Well	BOST FARM 41N-8A-L
Field	WELD COUNTY (NAD83,TRUE NORTH)	Wellbore	BOST FARM 41N-8A-L AWB
Facility	SEC.07-T05N-R66W		

## WELLPATH DATA (193 stations)

MD [ft]	Inclination [°]	Azimuth [°]	TVD [ft]	Vert Sect [ft]	North [ft]	East [ft]	DLS [°/100ft]	Comments
16482.00	90.280	89.120	7124.64	8206.05	-234.87	8204.73	0.42	
16575.00	90.310	89.200	7124.16	8299.03	-233.50	8297.72	0.09	
16669.00	90.280	89.350	7123.68	8393.01	-232.31	8391.71	0.16	
16761.00	90.250	89.980	7123.25	8485.00	-231.77	8483.71	0.69	
16854.00	90.180	89.820	7122.90	8578.00	-231.61	8576.71	0.19	
16946.00	90.180	88.200	7122.61	8669.97	-230.02	8668.69	1.76	
17041.00	90.150	89.330	7122.34	8764.93	-227.98	8763.67	1.19	
17136.00	90.180	91.570	7122.07	8859.92	-228.72	8858.66	2.36	
17229.00	90.120	93.060	7121.82	8952.86	-232.48	8951.58	1.60	
17322.00	90.180	93.080	7121.58	9045.76	-237.46	9044.45	0.07	
17415.00	90.180	92.850	7121.29	9138.66	-242.27	9137.32	0.25	
17491.00	90.250	91.820	7121.00	9214.62	-245.37	9213.26	1.36	BHI LAST SURVEY (1640'FNL & 420'FEL, SEC.08)
17515.00	90.250	91.820	7120.90	9238.61	-246.13	9237.24	0.00	PROJ TO BIT (1641'FNL & 396'FEL, SEC.08)

## HOLE & CASING SECTIONS - Ref Wellbore: BOST FARM 41N-8A-L AWB Ref Wellpath: BOST FARM 41N-8A-L AWP

String/Diameter	Start MD [ft]	End MD [ft]	Interval [ft]	Start TVD [ft]	End TVD [ft]	Start N/S [ft]	Start E/W [ft]	End N/S [ft]	End E/W [ft]
13.5in Open Hole	20.00	1809.00	1789.00	20.00	1775.07	0.00	0.00	-34.92	-293.26
9.625in Casing Surface	20.00	1809.00	1789.00	20.00	1775.07	0.00	0.00	-34.92	-293.26
8.5in Open Hole	1809.00	17515.00	15706.00	1775.07	7120.90	-34.92	-293.26	-246.13	9237.24



# Actual Wellpath Report

BOST FARM 41N-8A-L AWP

Page 9 of 10



## REFERENCE WELLPATH IDENTIFICATION

Operator	SRC ENERGY	Slot	SLOT#44 BOST FARM 41N-8A-L (1437'FNL & 940'FWL, SEC.07)
Area	COLORADO	Well	BOST FARM 41N-8A-L
Field	WELD COUNTY (NAD83,TRUE NORTH)	Wellbore	BOST FARM 41N-8A-L AWB
Facility	SEC.07-T05N-R66W		

## TARGETS

Name	TVD [ft]	North [ft]	East [ft]	Grid East [US ft]	Grid North [US ft]	Latitude	Longitude	Shape
SEC.07-T05N-R66W	25.00	-1368.70	324.72	3187161.59	1394309.79	40°24'49.806"N	104°49'40.249"W	polygon
SEC.08-T05N-R66W	25.00	-1368.70	324.72	3187161.59	1394309.79	40°24'49.806"N	104°49'40.249"W	polygon
BOST FARM 41N-8A-L TOP OF PROD ON PLAT (1691'FNL & 150'FWL, SEC.07)	6862.00	-239.32	-788.28	3186040.12	1395430.67	40°25'00.966"N	104°49'54.638"W	point
BOST FARM 41N-8A-L TOP OF PROD REV-1 (1691'FNL & 150'FWL, SEC.07)	6930.58	-239.32	-788.28	3186040.12	1395430.67	40°25'00.966"N	104°49'54.638"W	point
BOST FARM 41N-8A-L BHL ON PLAT (1651'FNL & 460'FEL, SEC.08)	7094.00	-256.21	9173.07	3196000.91	1395489.15	40°25'00.782"N	104°47'45.852"W	point
BOST FARM 41N-8A-L BHL REV-1 (1651'FNL & 460'FEL, SEC.08)	7135.98	-256.21	9173.07	3196000.91	1395489.15	40°25'00.782"N	104°47'45.852"W	point
BOST FARM 1N-8C-L HARDLINE BOX	7286.00	99.88	0.85	3186826.63	1395775.82	40°25'04.318"N	104°49'44.436"W	polygon

## WELLPATH COMPOSITION - Ref Wellbore: BOST FARM 41N-8A-L AWB Ref Wellpath: BOST FARM 41N-8A-L AWP

Start MD [ft]	End MD [ft]	Positional Uncertainty Model	Log Name/Comment	Wellbore
20.00	1759.00	BHI NaviTrak (Standard)	13 1/2" SURFACE SECTION <121-1743>	BOST FARM 41N-8A-L AWB
1759.00	17491.00	BHI AutoTrak Curve (MagCAD+IFR1, Short spacing)	8 1/2" MONOBORE SURVEYS <1854-17491>	BOST FARM 41N-8A-L AWB
17491.00	17515.00	Blind Drilling (std)	Projection to bit	BOST FARM 41N-8A-L AWB



# Actual Wellpath Report

## BOST FARM 41N-8A-L AWP

Page 10 of 10



REFERENCE WELLPATH IDENTIFICATION			
Operator	SRC ENERGY	Slot	SLOT#44 BOST FARM 41N-8A-L (1437'FNL & 940'FWL, SEC.07)
Area	COLORADO	Well	BOST FARM 41N-8A-L
Field	WELD COUNTY (NAD83,TRUE NORTH)	Wellbore	BOST FARM 41N-8A-L AWB
Facility	SEC.07-T05N-R66W		

WELLPATH COMMENTS				
MD [ft]	Inclination [°]	Azimuth [°]	TVD [ft]	Comment
7465.00	86.432	87.912	6930.17	LANDING (1714'FNL & 162'FWL, SEC.07)
17491.00	90.250	91.820	7121.00	BHI LAST SURVEY (1640'FNL & 420'FEL, SEC.08)
17515.00	90.250	91.820	7120.90	PROJ TO BIT (1641'FNL & 396'FEL, SEC.08)