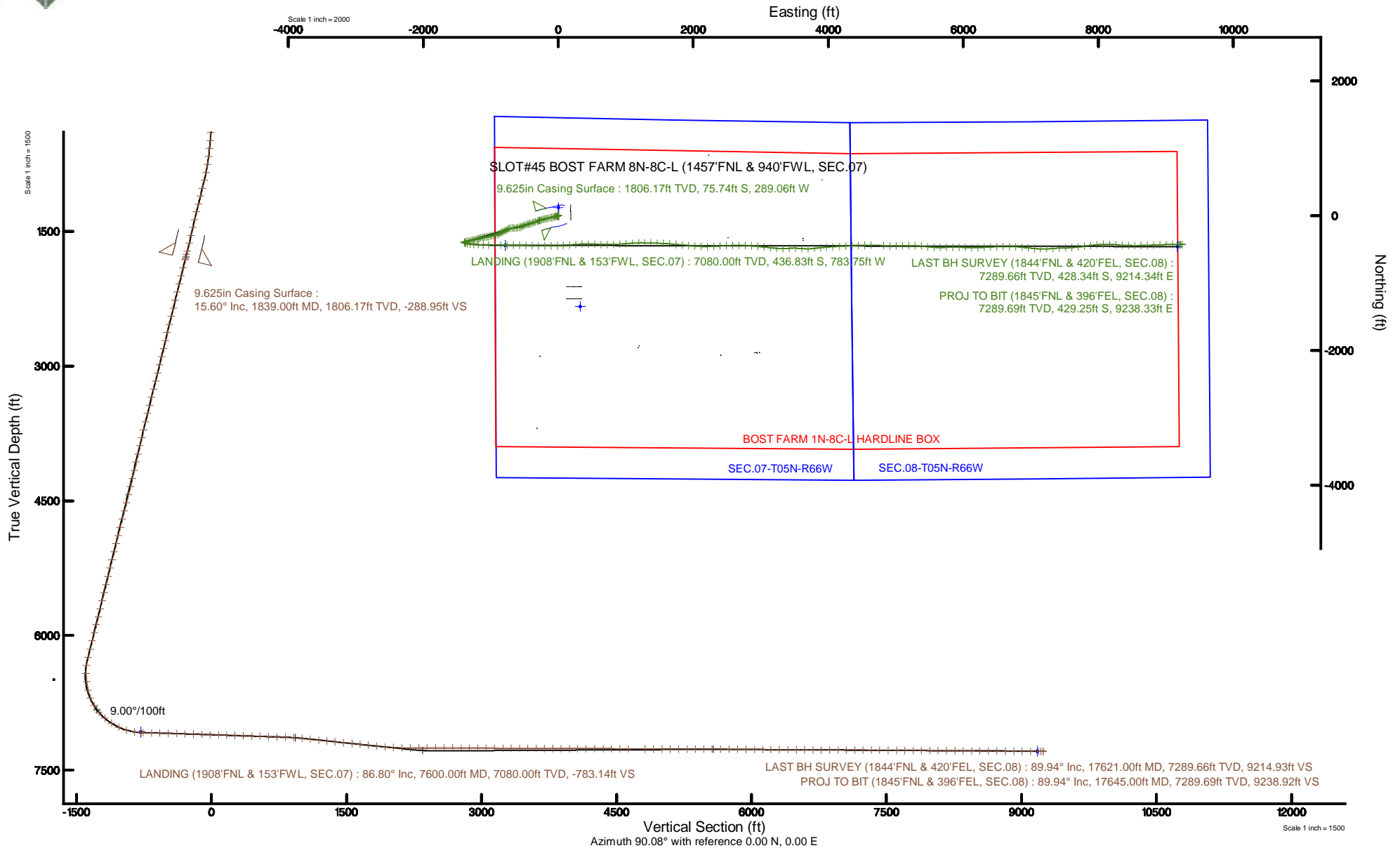


SRC ENERGY

Location: COLORADO Slot: SLOT#45 BOST FARM 8N-8C-L (1457'FNL & 940'FWL, SEC.07)
 Field: WELD COUNTY (NAD83,TRUE NORTH) Well: BOST FARM 8N-8C-L
 Facility: SEC.07-T05N-R66W Wellbore: BOST FARM 8N-8C-L PWB

Plot reference wellpath is BOST FARM 8N-8C-L (REV-B.0) PWP	Grid System: NAD83 / Lambert Colorado SP, Northern Zone (501), US feet
True vertical depths are referenced to PRECISION 462 (20) (RKB)	North Reference: True north
Measured depths are referenced to PRECISION 462 (20) (RKB)	Scale: True distance
PRECISION 462 (20) (RKB) to Mean Sea Level: 4901 feet	Depths are in feet
Mean Sea Level to Mud line (At Slot: SLOT#45 BOST FARM 8N-8C-L (1457'FNL & 940'FWL, SEC.07)): 0 feet	Created by: hanisab on 2019-02-04
Coordinates are in feet referenced to Slot	Database: WellArchitectDB





Actual Wellpath Report

BOST FARM 8N-8C-L AWP

Page 1 of 10



REFERENCE WELLPATH IDENTIFICATION			
Operator	SRC ENERGY	Slot	SLOT#45 BOST FARM 8N-8C-L (1457'FNL & 940'FWL, SEC.07)
Area	COLORADO	Well	BOST FARM 8N-8C-L
Field	WELD COUNTY (NAD83,TRUE NORTH)	Wellbore	BOST FARM 8N-8C-L AWB
Facility	SEC.07-T05N-R66W		

REPORT SETUP INFORMATION			
Projection System	NAD83 / Lambert Colorado SP, Northern Zone (501), US feet	Software System	WellArchitect® 5.1
North Reference	True	User	Hanisab
Scale	0.999961	Report Generated	2/4/2019 at 11:40:14 PM
Convergence at slot	0.43° East	Database/Source file	WellArchitectDB/BOST_FARM_8N-8C-L_AWP.xml

WELLPATH LOCATION						
	Local coordinates		Grid coordinates		Geographic coordinates	
	North[ft]	East[ft]	Easting[US ft]	Northing[US ft]	Latitude	Longitude
Slot Location	1348.67	-324.70	3186826.69	1395655.90	40°25'03.133"N	104°49'44.447"W
Facility Reference Pt			3187161.59	1394309.79	40°24'49.806"N	104°49'40.249"W
Field Reference Pt			3171284.48	1426358.81	40°30'07.643"N	104°53'02.634"W

WELLPATH DATUM			
Calculation method	Minimum curvature	PRECISION 462 (20') (RKB) to Facility Vertical Datum	4901.00ft
Horizontal Reference Pt	Slot	PRECISION 462 (20') (RKB) to Mean Sea Level	4901.00ft
Vertical Reference Pt	PRECISION 462 (20') (RKB)	PRECISION 462 (20') (RKB) to Mud Line at Slot (SLOT#45 BOST FARM 8N-8C-L (1457'FNL & 940'FWL, SEC.07))	4901.00ft
MD Reference Pt	PRECISION 462 (20') (RKB)	Section Origin	N 0.00, E 0.00 ft
Field Vertical Reference	Mean Sea Level	Section Azimuth	90.08°



Actual Wellpath Report

BOST FARM 8N-8C-L AWP

Page 2 of 10



REFERENCE WELLPATH IDENTIFICATION

Operator	SRC ENERGY	Slot	SLOT#45 BOST FARM 8N-8C-L (1457'FNL & 940'FWL, SEC.07)
Area	COLORADO	Well	BOST FARM 8N-8C-L
Field	WELD COUNTY (NAD83,TRUE NORTH)	Wellbore	BOST FARM 8N-8C-L AWB
Facility	SEC.07-T05N-R66W		

WELLPATH DATA (194 stations) † = interpolated/extrapolated station

MD [ft]	Inclination [°]	Azimuth [°]	TVD [ft]	Vert Sect [ft]	North [ft]	East [ft]	DLS [°/100ft]	Comments
0.00†	0.000	268.950	0.00	0.00	0.00	0.00	0.00	
20.00	0.000	268.950	20.00	0.00	0.00	0.00	0.00	
137.00	0.220	268.950	137.00	-0.22	0.00	-0.22	0.19	
226.00	0.500	292.160	226.00	-0.76	0.14	-0.76	0.35	
309.00	2.130	240.270	308.97	-2.43	-0.49	-2.43	2.25	
399.00	3.190	240.130	398.88	-6.05	-2.57	-6.05	1.18	
489.00	5.380	246.760	488.62	-12.10	-5.48	-12.10	2.49	
579.00	6.310	257.910	578.15	-20.81	-8.18	-20.82	1.63	
669.00	7.280	261.690	667.52	-31.28	-10.04	-31.30	1.19	
759.00	9.340	257.360	756.57	-44.05	-12.46	-44.07	2.39	
849.00	11.530	253.630	845.08	-59.80	-16.60	-59.82	2.55	
939.00	14.080	257.180	932.84	-79.10	-21.56	-79.13	2.96	
1029.00	14.330	255.930	1020.08	-100.57	-26.70	-100.61	0.44	
1119.00	14.440	258.580	1107.26	-122.37	-31.63	-122.41	0.74	
1209.00	14.510	257.500	1194.41	-144.37	-36.29	-144.42	0.31	
1299.00	14.240	257.620	1281.59	-166.18	-41.10	-166.24	0.30	
1389.00	12.960	256.450	1369.06	-186.80	-45.84	-186.86	1.45	
1479.00	13.190	260.230	1456.73	-206.72	-49.95	-206.79	0.98	
1569.00	12.860	255.540	1544.42	-226.54	-54.19	-226.61	1.23	
1659.00	13.400	248.340	1632.07	-245.92	-60.54	-246.00	1.91	
1749.00	14.950	249.990	1719.33	-266.51	-68.36	-266.61	1.78	
1789.00	15.140	251.440	1757.96	-276.31	-71.79	-276.41	1.05	
1851.00	15.720	254.420	1817.72	-292.07	-76.62	-292.17	1.58	
1945.00	14.450	251.030	1908.48	-315.41	-83.86	-315.53	1.64	
2038.00	14.420	249.880	1998.55	-337.25	-91.61	-337.38	0.31	
2131.00	14.470	250.070	2088.61	-359.03	-99.56	-359.17	0.07	
2224.00	14.390	250.760	2178.67	-380.86	-107.33	-381.01	0.20	
2317.00	14.020	253.930	2268.83	-402.58	-114.25	-402.74	0.93	
2409.00	13.910	255.710	2358.11	-424.00	-120.07	-424.17	0.48	
2501.00	14.320	254.560	2447.34	-445.68	-125.83	-445.85	0.54	



Actual Wellpath Report

BOST FARM 8N-8C-L AWP

Page 3 of 10



REFERENCE WELLPATH IDENTIFICATION

Operator	SRC ENERGY	Slot	SLOT#45 BOST FARM 8N-8C-L (1457'FNL & 940'FWL, SEC.07)
Area	COLORADO	Well	BOST FARM 8N-8C-L
Field	WELD COUNTY (NAD83, TRUE NORTH)	Wellbore	BOST FARM 8N-8C-L AWB
Facility	SEC.07-T05N-R66W		

WELLPATH DATA (194 stations)

MD [ft]	Inclination [°]	Azimuth [°]	TVD [ft]	Vert Sect [ft]	North [ft]	East [ft]	DLS [°/100ft]	Comments
2594.00	14.580	256.830	2537.39	-468.15	-131.55	-468.34	0.67	
2688.00	14.620	246.950	2628.37	-490.58	-138.90	-490.78	2.65	
2781.00	14.310	242.790	2718.43	-511.59	-148.75	-511.80	1.17	
2873.00	14.210	245.790	2807.59	-531.99	-158.58	-532.21	0.81	
2965.00	14.210	250.990	2896.78	-552.95	-166.89	-553.18	1.39	
3060.00	14.200	255.470	2988.88	-575.25	-173.61	-575.49	1.16	
3152.00	14.040	259.460	3078.10	-597.13	-178.48	-597.38	1.07	
3245.00	14.200	263.680	3168.30	-619.56	-181.80	-619.81	1.12	
3337.00	14.160	268.390	3257.50	-642.02	-183.36	-642.28	1.25	
3431.00	14.250	270.020	3348.62	-665.08	-183.68	-665.34	0.44	
3523.00	14.170	266.610	3437.81	-687.65	-184.34	-687.90	0.91	
3617.00	14.040	259.460	3528.98	-710.34	-187.10	-710.60	1.86	
3711.00	14.450	250.820	3620.10	-732.62	-193.04	-732.89	2.30	
3804.00	14.820	240.880	3710.10	-753.96	-202.65	-754.24	2.73	
3896.00	14.510	239.370	3799.10	-774.14	-214.24	-774.44	0.53	
3989.00	14.810	242.360	3889.08	-794.68	-225.69	-795.00	0.88	
4083.00	14.450	244.580	3980.03	-815.90	-236.30	-816.23	0.71	
4175.00	14.630	242.180	4069.08	-836.53	-246.65	-836.87	0.68	
4269.00	14.540	240.410	4160.05	-857.27	-258.02	-857.63	0.48	
4362.00	14.270	245.020	4250.13	-877.80	-268.62	-878.18	1.27	
4455.00	14.470	249.730	4340.23	-899.08	-277.49	-899.47	1.27	
4550.00	14.530	253.130	4432.20	-921.61	-285.06	-922.00	0.90	
4644.00	14.510	260.070	4523.21	-944.48	-290.51	-944.89	1.85	
4738.00	14.650	260.390	4614.18	-967.80	-294.53	-968.21	0.17	
4830.00	14.510	255.190	4703.22	-990.40	-299.42	-990.82	1.43	
4926.00	14.610	256.700	4796.14	-1013.81	-305.28	-1014.23	0.41	
5018.00	14.550	260.210	4885.18	-1036.48	-309.91	-1036.91	0.96	
5112.00	13.780	260.680	4976.32	-1059.16	-313.73	-1059.60	0.83	
5205.00	13.860	260.420	5066.63	-1081.07	-317.38	-1081.51	0.11	
5299.00	14.120	259.270	5157.84	-1103.43	-321.39	-1103.88	0.40	



Actual Wellpath Report

BOST FARM 8N-8C-L AWP

Page 4 of 10



REFERENCE WELLPATH IDENTIFICATION			
Operator	SRC ENERGY	Slot	SLOT#45 BOST FARM 8N-8C-L (1457'FNL & 940'FWL, SEC.07)
Area	COLORADO	Well	BOST FARM 8N-8C-L
Field	WELD COUNTY (NAD83,TRUE NORTH)	Wellbore	BOST FARM 8N-8C-L AWB
Facility	SEC.07-T05N-R66W		

WELLPATH DATA (194 stations) † = interpolated/extrapolated station								
MD [ft]	Inclination [°]	Azimuth [°]	TVD [ft]	Vert Sect [ft]	North [ft]	East [ft]	DLS [°/100ft]	Comments
5393.00	14.060	256.260	5249.01	-1125.78	-326.23	-1126.23	0.78	
5488.00	14.350	256.320	5341.11	-1148.42	-331.76	-1148.88	0.31	
5581.00	14.390	253.620	5431.20	-1170.70	-337.74	-1171.17	0.72	
5674.00	13.900	252.420	5521.38	-1192.42	-344.38	-1192.90	0.61	
5766.00	13.950	254.800	5610.68	-1213.65	-350.62	-1214.14	0.62	
5859.00	14.430	255.540	5700.84	-1235.68	-356.45	-1236.18	0.55	
5952.00	14.120	257.200	5790.97	-1257.95	-361.86	-1258.46	0.55	
6044.00	14.140	258.470	5880.18	-1279.90	-366.59	-1280.42	0.34	
6137.00	14.350	259.030	5970.32	-1302.34	-371.06	-1302.86	0.27	
6230.00	14.040	259.640	6060.48	-1324.75	-375.28	-1325.27	0.37	
6324.00	14.340	257.570	6151.62	-1347.32	-379.84	-1347.86	0.63	
6417.00	13.860	259.410	6241.81	-1369.51	-384.36	-1370.05	0.71	
6510.00	10.570	244.250	6332.72	-1388.15	-390.12	-1388.69	4.91	
6602.00	5.830	143.820	6424.09	-1393.00	-397.59	-1393.56	14.07	
6694.00	5.920	114.700	6515.63	-1385.92	-403.34	-1386.49	3.21	
6788.00	12.590	109.910	6608.35	-1371.86	-408.86	-1372.43	7.14	
6880.00	22.180	103.170	6696.06	-1345.45	-416.25	-1346.03	10.63	
6974.00	31.850	97.080	6779.72	-1303.44	-423.37	-1304.04	10.69	
7067.00	40.070	94.140	6854.93	-1249.13	-428.56	-1249.73	9.03	
7159.00	48.330	92.190	6920.84	-1185.14	-432.02	-1185.75	9.10	
7252.00	57.830	90.540	6976.64	-1110.90	-433.72	-1111.51	10.31	
7344.00	64.430	89.860	7021.03	-1030.38	-433.99	-1030.99	7.20	
7437.00	73.390	89.990	7054.46	-943.70	-433.88	-944.30	9.64	
7530.00	82.780	91.370	7073.64	-852.81	-434.98	-853.42	10.20	
7600.00†	86.801	91.683	7080.00	-783.14	-436.83	-783.75	5.76	LANDING (1908'FNL & 153'FWL, SEC.07)
7624.00	88.180	91.790	7081.05	-759.17	-437.56	-759.78	5.76	
7718.00	88.340	90.460	7083.90	-665.23	-439.41	-665.85	1.42	
7811.00	88.150	90.270	7086.75	-572.28	-440.00	-572.89	0.29	
7905.00	88.210	92.250	7089.74	-478.35	-442.06	-478.97	2.11	
7998.00	88.150	92.000	7092.69	-385.45	-445.51	-386.08	0.28	



Actual Wellpath Report

BOST FARM 8N-8C-L AWP

Page 5 of 10



REFERENCE WELLPATH IDENTIFICATION

Operator	SRC ENERGY	Slot	SLOT#45 BOST FARM 8N-8C-L (1457'FNL & 940'FWL, SEC.07)
Area	COLORADO	Well	BOST FARM 8N-8C-L
Field	WELD COUNTY (NAD83,TRUE NORTH)	Wellbore	BOST FARM 8N-8C-L AWB
Facility	SEC.07-T05N-R66W		

WELLPATH DATA (194 stations)

MD [ft]	Inclination [°]	Azimuth [°]	TVD [ft]	Vert Sect [ft]	North [ft]	East [ft]	DLS [°/100ft]	Comments
8091.00	88.250	90.750	7095.61	-292.53	-447.74	-293.15	1.35	
8183.00	88.250	89.040	7098.42	-200.57	-447.57	-201.20	1.86	
8277.00	88.150	90.640	7101.38	-106.62	-447.31	-107.25	1.70	
8369.00	88.120	89.270	7104.37	-14.67	-447.24	-15.30	1.49	
8461.00	88.250	86.750	7107.28	77.21	-444.04	76.59	2.74	
8553.00	88.000	83.720	7110.30	168.82	-436.41	168.21	3.30	
8646.00	88.030	85.720	7113.52	261.36	-427.85	260.76	2.15	
8740.00	88.030	87.790	7116.75	355.14	-422.54	354.55	2.20	
8833.00	87.970	90.590	7119.99	448.06	-421.22	447.47	3.01	
8926.00	88.210	92.300	7123.09	540.98	-423.57	540.39	1.86	
9020.00	87.910	92.610	7126.28	634.84	-427.59	634.25	0.46	
9114.00	87.940	90.570	7129.68	728.75	-430.20	728.15	2.17	
9207.00	88.000	87.220	7132.98	821.65	-428.41	821.06	3.60	
9300.00	86.360	86.240	7137.55	914.38	-423.11	913.79	2.05	
9392.00	84.110	84.940	7145.19	1005.77	-416.06	1005.19	2.82	
9485.00	83.930	86.020	7154.88	1097.97	-408.77	1097.40	1.17	
9578.00	83.980	88.100	7164.68	1190.31	-404.03	1189.75	2.22	
9670.00	84.140	91.910	7174.20	1281.80	-404.04	1281.24	4.12	
9763.00	84.020	91.460	7183.79	1374.27	-406.76	1373.70	0.50	
9857.00	83.890	91.510	7193.69	1467.72	-409.18	1467.15	0.15	
9950.00	84.170	91.910	7203.37	1560.18	-411.94	1559.60	0.52	
10043.00	83.800	95.860	7213.12	1652.44	-418.20	1651.86	4.24	
10135.00	84.080	95.070	7222.83	1743.52	-426.92	1742.93	0.91	
10229.00	83.830	95.450	7232.73	1836.62	-435.49	1836.01	0.48	
10324.00	85.100	94.650	7241.89	1930.82	-443.81	1930.20	1.58	
10417.00	87.440	94.840	7247.94	2023.31	-451.48	2022.68	2.52	
10511.00	87.880	91.720	7251.78	2117.07	-456.86	2116.44	3.35	
10605.00	90.220	88.540	7253.34	2211.04	-457.07	2210.40	4.20	
10698.00	90.030	87.940	7253.13	2303.99	-454.21	2303.36	0.68	
10791.00	90.060	87.140	7253.06	2396.90	-450.22	2396.27	0.86	



Actual Wellpath Report

BOST FARM 8N-8C-L AWP

Page 6 of 10



REFERENCE WELLPATH IDENTIFICATION

Operator	SRC ENERGY	Slot	SLOT#45 BOST FARM 8N-8C-L (1457'FNL & 940'FWL, SEC.07)
Area	COLORADO	Well	BOST FARM 8N-8C-L
Field	WELD COUNTY (NAD83,TRUE NORTH)	Wellbore	BOST FARM 8N-8C-L AWB
Facility	SEC.07-T05N-R66W		

WELLPATH DATA (194 stations)

MD [ft]	Inclination [°]	Azimuth [°]	TVD [ft]	Vert Sect [ft]	North [ft]	East [ft]	DLS [°/100ft]	Comments
10884.00	89.780	87.880	7253.19	2489.80	-446.18	2489.18	0.85	
10979.00	90.120	88.110	7253.27	2584.74	-442.86	2584.13	0.43	
11073.00	89.660	90.550	7253.45	2678.73	-441.76	2678.11	2.64	
11167.00	89.600	92.370	7254.06	2772.69	-444.15	2772.08	1.94	
11259.00	89.720	93.740	7254.61	2864.57	-449.06	2863.94	1.49	
11353.00	89.660	95.700	7255.12	2958.25	-456.79	2957.62	2.09	
11447.00	89.690	95.940	7255.65	3051.78	-466.32	3051.13	0.26	
11540.00	89.820	96.360	7256.05	3144.26	-476.29	3143.59	0.47	
11634.00	89.720	93.750	7256.42	3237.89	-484.57	3237.22	2.78	
11726.00	89.600	89.280	7256.97	3329.84	-487.00	3329.16	4.86	
11819.00	89.820	87.160	7257.44	3422.78	-484.11	3422.11	2.29	
11912.00	90.000	91.370	7257.59	3515.75	-482.92	3515.08	4.53	
12005.00	89.630	94.760	7257.89	3608.61	-487.89	3607.93	3.67	
12097.00	89.820	89.650	7258.33	3700.52	-491.43	3699.84	5.56	
12190.00	89.630	84.040	7258.78	3793.33	-486.31	3792.66	6.04	
12283.00	89.750	83.500	7259.28	3885.77	-476.22	3885.11	0.59	
12375.00	89.880	86.130	7259.58	3977.37	-467.91	3976.72	2.86	
12468.00	89.850	85.700	7259.80	4070.12	-461.28	4069.48	0.46	
12563.00	89.850	86.720	7260.04	4164.91	-455.00	4164.27	1.07	
12657.00	89.880	86.910	7260.27	4258.75	-449.78	4258.13	0.20	
12749.00	89.820	86.880	7260.51	4350.61	-444.80	4349.99	0.07	
12843.00	89.570	88.920	7261.01	4444.54	-441.35	4443.92	2.19	
12936.00	89.630	89.420	7261.66	4537.52	-440.00	4536.91	0.54	
13029.00	89.510	88.660	7262.35	4630.50	-438.45	4629.89	0.83	
13217.00	89.850	95.490	7263.41	4818.27	-445.25	4817.66	3.64	
13310.00	89.810	90.660	7263.68	4911.12	-450.24	4910.50	5.19	
13403.00	90.090	87.350	7263.76	5004.09	-448.62	5003.47	3.57	
13497.00	89.690	89.510	7263.94	5098.04	-446.05	5097.43	2.34	
13590.00	89.970	89.660	7264.22	5191.04	-445.37	5190.42	0.34	
13685.00	90.000	92.120	7264.24	5286.02	-446.85	5285.41	2.59	



Actual Wellpath Report

BOST FARM 8N-8C-L AWP

Page 7 of 10



REFERENCE WELLPATH IDENTIFICATION

Operator	SRC ENERGY	Slot	SLOT#45 BOST FARM 8N-8C-L (1457'FNL & 940'FWL, SEC.07)
Area	COLORADO	Well	BOST FARM 8N-8C-L
Field	WELD COUNTY (NAD83,TRUE NORTH)	Wellbore	BOST FARM 8N-8C-L AWB
Facility	SEC.07-T05N-R66W		

WELLPATH DATA (194 stations)

MD [ft]	Inclination [°]	Azimuth [°]	TVD [ft]	Vert Sect [ft]	North [ft]	East [ft]	DLS [°/100ft]	Comments
13777.00	90.060	95.070	7264.20	5377.84	-452.62	5377.21	3.21	
13871.00	89.940	95.510	7264.20	5471.45	-461.28	5470.81	0.49	
13963.00	89.630	95.120	7264.54	5563.07	-469.81	5562.42	0.54	
14058.00	89.410	88.780	7265.34	5657.97	-473.04	5657.31	6.68	
14152.00	89.510	87.940	7266.22	5751.92	-470.35	5751.27	0.90	
14246.00	88.860	88.720	7267.56	5845.86	-467.61	5845.22	1.08	
14339.00	89.510	92.080	7268.88	5938.84	-468.26	5938.19	3.68	
14433.00	89.170	92.860	7269.97	6032.75	-472.31	6032.10	0.91	
14525.00	89.480	90.240	7271.05	6124.70	-474.80	6124.05	2.87	
14617.00	89.540	88.900	7271.84	6216.70	-474.10	6216.04	1.46	
14710.00	89.570	86.330	7272.56	6309.60	-470.24	6308.95	2.76	
14804.00	89.820	87.910	7273.06	6403.47	-465.51	6402.83	1.70	
14898.00	89.570	87.210	7273.56	6497.38	-461.51	6496.74	0.79	
14991.00	89.970	89.300	7273.93	6590.32	-458.68	6589.69	2.29	
15084.00	89.780	92.450	7274.14	6683.30	-460.10	6682.67	3.39	
15177.00	89.850	91.030	7274.44	6776.26	-462.92	6775.62	1.53	
15271.00	89.850	95.010	7274.68	6870.12	-467.87	6869.47	4.23	
15363.00	89.910	97.160	7274.88	6961.61	-477.63	6960.95	2.34	
15456.00	89.720	95.060	7275.18	7054.09	-487.52	7053.41	2.27	
15548.00	89.690	91.150	7275.65	7145.94	-492.51	7145.26	4.25	
15641.00	89.820	88.550	7276.05	7238.93	-492.26	7238.25	2.80	
15733.00	89.690	85.640	7276.44	7330.79	-487.60	7330.12	3.17	
15826.00	89.600	88.120	7277.02	7423.64	-482.54	7422.97	2.67	
15919.00	89.350	87.820	7277.87	7516.57	-479.25	7515.91	0.42	
16013.00	89.570	85.210	7278.76	7610.38	-473.53	7609.73	2.79	
16106.00	89.910	83.110	7279.18	7702.88	-464.07	7702.24	2.29	
16200.00	89.450	82.810	7279.70	7796.15	-452.55	7795.53	0.58	
16293.00	89.480	83.480	7280.57	7888.47	-441.45	7887.86	0.72	
16387.00	89.660	85.550	7281.28	7982.01	-432.47	7981.42	2.21	
16479.00	89.660	87.960	7281.82	8073.85	-427.26	8073.26	2.62	



Actual Wellpath Report

BOST FARM 8N-8C-L AWP

Page 8 of 10



REFERENCE WELLPATH IDENTIFICATION

Operator	SRC ENERGY	Slot	SLOT#45 BOST FARM 8N-8C-L (1457'FNL & 940'FWL, SEC.07)
Area	COLORADO	Well	BOST FARM 8N-8C-L
Field	WELD COUNTY (NAD83,TRUE NORTH)	Wellbore	BOST FARM 8N-8C-L AWB
Facility	SEC.07-T05N-R66W		

WELLPATH DATA (194 stations)

MD [ft]	Inclination [°]	Azimuth [°]	TVD [ft]	Vert Sect [ft]	North [ft]	East [ft]	DLS [°/100ft]	Comments
16573.00	89.540	91.210	7282.48	8167.83	-426.58	8167.24	3.46	
16666.00	89.050	94.970	7283.62	8260.68	-431.59	8260.09	4.08	
16759.00	89.600	94.080	7284.72	8353.39	-438.93	8352.79	1.12	
16851.00	89.570	90.990	7285.39	8445.29	-442.99	8444.68	3.36	
16944.00	89.510	90.320	7286.13	8538.29	-444.06	8537.67	0.72	
17038.00	89.630	88.680	7286.84	8632.28	-443.24	8631.67	1.75	
17133.00	89.480	87.820	7287.58	8727.22	-440.34	8726.62	0.92	
17227.00	89.660	87.810	7288.28	8821.15	-436.75	8820.55	0.19	
17320.00	89.850	87.440	7288.68	8914.06	-432.90	8913.47	0.45	
17413.00	89.850	88.010	7288.92	9006.98	-429.21	9006.39	0.61	
17505.00	89.780	89.270	7289.22	9098.95	-427.02	9098.36	1.37	
17597.00	89.750	91.430	7289.60	9190.94	-427.58	9190.36	2.35	
17621.00	89.940	92.170	7289.66	9214.93	-428.34	9214.34	3.18	LAST BH SURVEY (1844'FNL & 420'FEL, SEC.08)
17645.00	89.940	92.170	7289.69	9238.92	-429.25	9238.33	0.00	PROJ TO BIT (1845'FNL & 396'FEL, SEC.08)

HOLE & CASING SECTIONS - Ref Wellbore: BOST FARM 8N-8C-L AWB Ref Wellpath: BOST FARM 8N-8C-L AWP

String/Diameter	Start MD [ft]	End MD [ft]	Interval [ft]	Start TVD [ft]	End TVD [ft]	Start N/S [ft]	Start E/W [ft]	End N/S [ft]	End E/W [ft]
13.5in Open Hole	20.00	1839.00	1819.00	20.00	1806.17	0.00	0.00	-75.74	-289.06
9.625in Casing Surface	20.00	1839.00	1819.00	20.00	1806.17	0.00	0.00	-75.74	-289.06
8.5in Open Hole	1839.00	17645.00	15806.00	1806.17	7289.69	-75.74	-289.06	-429.25	9238.33



Actual Wellpath Report

BOST FARM 8N-8C-L AWP

Page 9 of 10



REFERENCE WELLPATH IDENTIFICATION

Operator	SRC ENERGY	Slot	SLOT#45 BOST FARM 8N-8C-L (1457'FNL & 940'FWL, SEC.07)
Area	COLORADO	Well	BOST FARM 8N-8C-L
Field	WELD COUNTY (NAD83,TRUE NORTH)	Wellbore	BOST FARM 8N-8C-L AWB
Facility	SEC.07-T05N-R66W		

TARGETS

Name	TVD [ft]	North [ft]	East [ft]	Grid East [US ft]	Grid North [US ft]	Latitude	Longitude	Shape
SEC.07-T05N-R66W	25.00	-1348.66	324.72	3187161.59	1394309.79	40°24'49.806"N	104°49'40.249"W	polygon
SEC.08-T05N-R66W	25.00	-1348.66	324.72	3187161.59	1394309.79	40°24'49.806"N	104°49'40.249"W	polygon
BOST FARM 8N-8C-L TOP OF PROD ON PLAT (1912'FNL & 150'FWL, SEC.07)	7072.00	-440.79	-787.18	3186042.90	1395209.19	40°24'58.777"N	104°49'54.624"W	point
BOST FARM 8N-8C-L TOP OF PROD REV-1 (1912'FNL & 150'FWL, SEC.07)	7079.47	-440.79	-787.18	3186042.90	1395209.19	40°24'58.777"N	104°49'54.624"W	point
BOST FARM 8N-8C-L BHL ON PLAT (1874'FNL & 460'FEL, SEC.08)	7267.00	-458.77	9174.55	3196004.07	1395266.59	40°24'58.583"N	104°47'45.834"W	point
BOST FARM 1N-8C-L HARDLINE BOX	7286.00	119.92	0.85	3186826.63	1395775.82	40°25'04.318"N	104°49'44.436"W	polygon
BOST FARM 8N-8C-L BHL REV-1 (1874'FNL & 460'FEL, SEC.08)	7288.14	-458.77	9174.55	3196004.07	1395266.59	40°24'58.583"N	104°47'45.834"W	point

WELLPATH COMPOSITION - Ref Wellbore: BOST FARM 8N-8C-L AWB Ref Wellpath: BOST FARM 8N-8C-L AWP

Start MD [ft]	End MD [ft]	Positional Uncertainty Model	Log Name/Comment	Wellbore
20.00	1789.00	BHI NaviTrak (Standard)	13 1/2" SURFACE SECTION <121-1773>	BOST FARM 8N-8C-L AWB
1789.00	17621.00	BHI AutoTrak Curve (MagCAD+IFR1, Short spacing)	8 1/2" MONOBORE SURVEYS <1851-17621>	BOST FARM 8N-8C-L AWB
17621.00	17645.00	Blind Drilling (std)	Projection to bit	BOST FARM 8N-8C-L AWB



Actual Wellpath Report

BOST FARM 8N-8C-L AWP

Page 10 of 10



REFERENCE WELLPATH IDENTIFICATION

Operator	SRC ENERGY	Slot	SLOT#45 BOST FARM 8N-8C-L (1457'FNL & 940'FWL, SEC.07)
Area	COLORADO	Well	BOST FARM 8N-8C-L
Field	WELD COUNTY (NAD83,TRUE NORTH)	Wellbore	BOST FARM 8N-8C-L AWB
Facility	SEC.07-T05N-R66W		

WELLPATH COMMENTS

MD [ft]	Inclination [°]	Azimuth [°]	TVD [ft]	Comment
7600.00	86.801	91.683	7080.00	LANDING (1908'FNL & 153'FWL, SEC.07)
17621.00	89.940	92.170	7289.66	LAST BH SURVEY (1844'FNL & 420'FEL, SEC.08)
17645.00	89.940	92.170	7289.69	PROJ TO BIT (1845'FNL & 396'FEL, SEC.08)