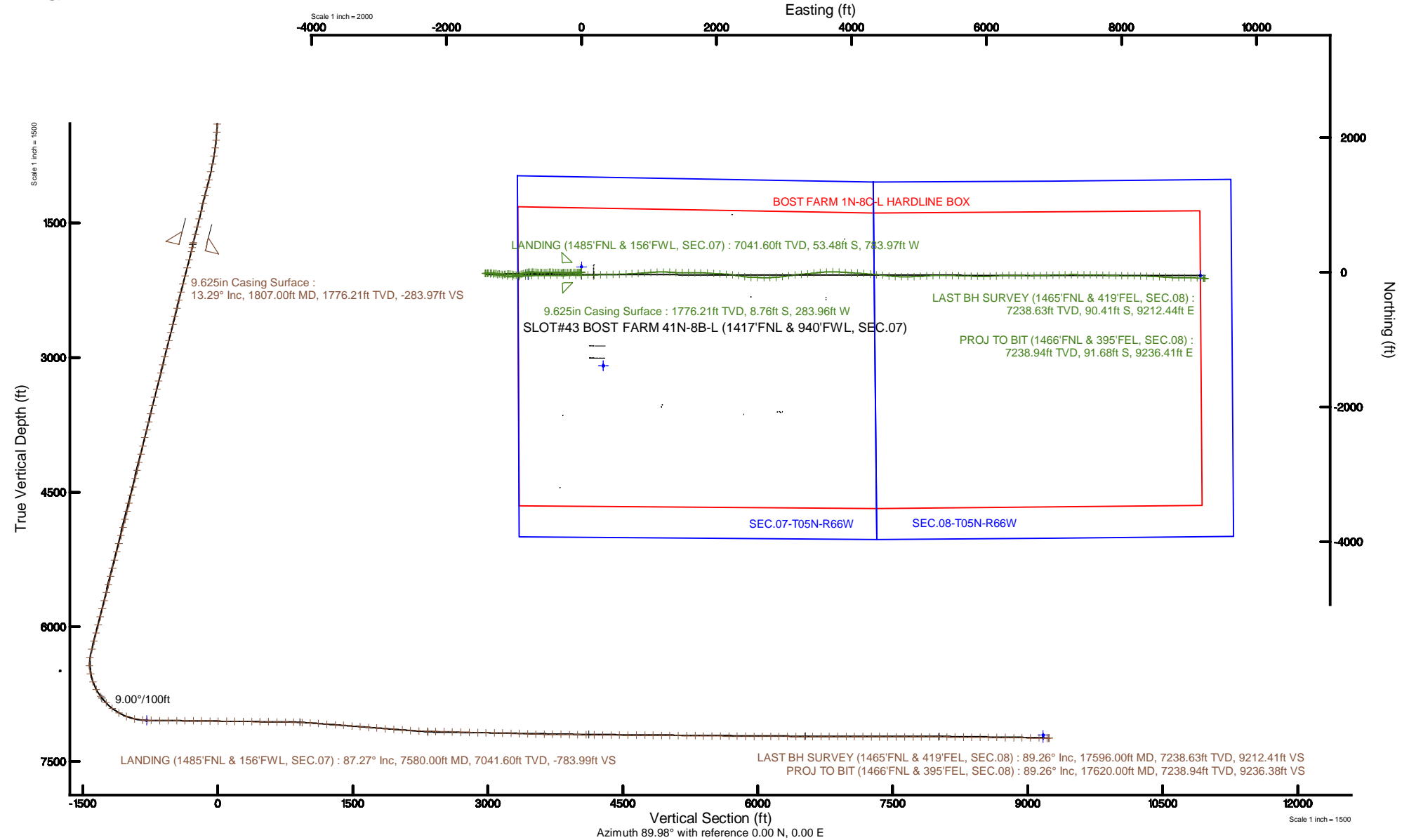


SRC ENERGY

Location: COLORADO Slot: SLOT#43 BOST FARM 41N-8B-L (1417'FNL & 940'FWL, SEC.07)
Field: WELD COUNTY (NAD83,TRUE NORTH) Well: BOST FARM 41N-8B-L
Facility: SEC.07-T05N-R66W Wellbore: BOST FARM 41N-8B-L PWB

| | |
|---|--|
| Plot reference wellpath is BOST FARM 41N-8B-L (REV-B.0) PWP | Grid System: NAD83 / Lambert Colorado SP, Northern Zone (501), US feet |
| True vertical depths are referenced to PRECISION 462 (20') (RKB) | North Reference: True north |
| Measured depths are referenced to PRECISION 462 (20') (RKB) | Scale: True distance |
| PRECISION 462 (20') (RKB) to Mean Sea Level: 4901 feet | Depths are in feet |
| Mean Sea Level to Mud line (At Slot: SLOT#43 BOST FARM 41N-8B-L (1417'FNL & 940'FWL, SEC.07)): 0 feet | Created by: hanisab on 2019-02-04 |
| Coordinates are in feet referenced to Slot | Database: WellArchitectDB |





Actual Wellpath Report

BOST FARM 41N-8B-L AWP

Page 1 of 10



REFERENCE WELLPATH IDENTIFICATION

| | | | |
|----------|--------------------------------|----------|---|
| Operator | SRC ENERGY | Slot | SLOT#43 BOST FARM 41N-8B-L (1417'FNL & 940'FWL, SEC.07) |
| Area | COLORADO | Well | BOST FARM 41N-8B-L |
| Field | WELD COUNTY (NAD83,TRUE NORTH) | Wellbore | BOST FARM 41N-8B-L AWB |
| Facility | SEC.07-T05N-R66W | | |

REPORT SETUP INFORMATION

| | | | |
|---------------------|---|----------------------|--|
| Projection System | NAD83 / Lambert Colorado SP, Northern Zone (501), US feet | Software System | WellArchitect® 5.1 |
| North Reference | True | User | Hanisab |
| Scale | 0.999961 | Report Generated | 2/4/2019 at 10:59:32 PM |
| Convergence at slot | 0.43° East | Database/Source file | WellArchitectDB/BOST_FARM_41N-8B-L_AWP.xml |

WELLPATH LOCATION

| | Local coordinates | | Grid coordinates | | Geographic coordinates | |
|-----------------------|-------------------|----------|------------------|-----------------|------------------------|-----------------|
| | North[ft] | East[ft] | Easting[US ft] | Northing[US ft] | Latitude | Longitude |
| Slot Location | 1388.74 | -324.39 | 3186826.69 | 1395695.98 | 40°25'03.529"N | 104°49'44.443"W |
| Facility Reference Pt | | | 3187161.59 | 1394309.79 | 40°24'49.806"N | 104°49'40.249"W |
| Field Reference Pt | | | 3171284.48 | 1426358.81 | 40°30'07.643"N | 104°53'02.634"W |

WELLPATH DATUM

| | | | |
|--------------------------|---------------------------|---|-------------------|
| Calculation method | Minimum curvature | PRECISION 462 (20') (RKB) to Facility Vertical Datum | 4901.00ft |
| Horizontal Reference Pt | Slot | PRECISION 462 (20') (RKB) to Mean Sea Level | 4901.00ft |
| Vertical Reference Pt | PRECISION 462 (20') (RKB) | PRECISION 462 (20') (RKB) to Mud Line at Slot (SLOT#43 BOST FARM 41N-8B-L (1417'FNL & 940'FWL, SEC.07)) | 4901.00ft |
| MD Reference Pt | PRECISION 462 (20') (RKB) | Section Origin | N 0.00, E 0.00 ft |
| Field Vertical Reference | Mean Sea Level | Section Azimuth | 89.98° |



Actual Wellpath Report

BOST FARM 41N-8B-L AWP

Page 2 of 10



REFERENCE WELLPATH IDENTIFICATION

| | | | |
|----------|--------------------------------|----------|---|
| Operator | SRC ENERGY | Slot | SLOT#43 BOST FARM 41N-8B-L (1417'FNL & 940'FWL, SEC.07) |
| Area | COLORADO | Well | BOST FARM 41N-8B-L |
| Field | WELD COUNTY (NAD83,TRUE NORTH) | Wellbore | BOST FARM 41N-8B-L AWB |
| Facility | SEC.07-T05N-R66W | | |

WELLPATH DATA (194 stations) † = interpolated/extrapolated station

| MD [ft] | Inclination [°] | Azimuth [°] | TVD [ft] | Vert Sect [ft] | North [ft] | East [ft] | DLS [°/100ft] | Comments |
|------------|--------------------|----------------|-------------|-------------------|---------------|--------------|------------------|----------|
| 0.00† | 0.000 | 137.780 | 0.00 | 0.00 | 0.00 | 0.00 | 0.00 | |
| 20.00 | 0.000 | 137.780 | 20.00 | 0.00 | 0.00 | 0.00 | 0.00 | |
| 137.00 | 0.410 | 137.780 | 137.00 | 0.28 | -0.31 | 0.28 | 0.35 | |
| 226.00 | 0.940 | 234.220 | 225.99 | -0.10 | -0.97 | -0.10 | 1.20 | |
| 309.00 | 1.840 | 258.090 | 308.97 | -1.95 | -1.65 | -1.95 | 1.27 | |
| 399.00 | 2.640 | 263.780 | 398.90 | -5.43 | -2.17 | -5.43 | 0.92 | |
| 489.00 | 4.180 | 265.120 | 488.74 | -10.76 | -2.67 | -10.76 | 1.71 | |
| 579.00 | 5.010 | 258.120 | 578.45 | -17.87 | -3.76 | -17.87 | 1.11 | |
| 669.00 | 8.140 | 265.080 | 667.85 | -28.07 | -5.12 | -28.07 | 3.58 | |
| 759.00 | 9.850 | 278.550 | 756.75 | -42.03 | -4.52 | -42.03 | 3.00 | |
| 849.00 | 11.160 | 272.950 | 845.24 | -58.34 | -2.93 | -58.34 | 1.84 | |
| 939.00 | 12.800 | 268.680 | 933.28 | -77.01 | -2.71 | -77.01 | 2.07 | |
| 1029.00 | 13.820 | 267.250 | 1020.86 | -97.71 | -3.45 | -97.71 | 1.19 | |
| 1119.00 | 13.870 | 265.520 | 1108.24 | -119.21 | -4.81 | -119.21 | 0.46 | |
| 1209.00 | 14.070 | 268.520 | 1195.58 | -140.90 | -5.94 | -140.90 | 0.83 | |
| 1299.00 | 14.180 | 269.700 | 1282.86 | -162.86 | -6.28 | -162.86 | 0.34 | |
| 1389.00 | 13.790 | 268.920 | 1370.20 | -184.61 | -6.54 | -184.60 | 0.48 | |
| 1479.00 | 13.940 | 269.310 | 1457.57 | -206.17 | -6.87 | -206.17 | 0.20 | |
| 1569.00 | 13.590 | 268.970 | 1544.99 | -227.58 | -7.19 | -227.58 | 0.40 | |
| 1659.00 | 13.940 | 268.100 | 1632.40 | -248.99 | -7.74 | -248.99 | 0.45 | |
| 1749.00 | 13.730 | 268.600 | 1719.79 | -270.50 | -8.36 | -270.50 | 0.27 | |
| 1757.00 | 13.510 | 267.630 | 1727.57 | -272.39 | -8.42 | -272.38 | 3.96 | |
| 1853.00 | 13.090 | 270.440 | 1820.99 | -294.46 | -8.80 | -294.46 | 0.80 | |
| 1946.00 | 14.580 | 273.420 | 1911.29 | -316.68 | -8.02 | -316.67 | 1.78 | |
| 2040.00 | 14.570 | 275.510 | 2002.27 | -340.26 | -6.18 | -340.25 | 0.56 | |
| 2133.00 | 14.260 | 273.390 | 2092.34 | -363.33 | -4.38 | -363.33 | 0.66 | |
| 2226.00 | 14.150 | 272.350 | 2182.50 | -386.12 | -3.24 | -386.12 | 0.30 | |
| 2318.00 | 14.120 | 274.050 | 2271.71 | -408.55 | -1.98 | -408.55 | 0.45 | |
| 2410.00 | 14.190 | 270.690 | 2360.92 | -431.02 | -1.05 | -431.02 | 0.90 | |
| 2503.00 | 14.190 | 270.690 | 2451.08 | -453.82 | -0.78 | -453.82 | 0.00 | |



Actual Wellpath Report

BOST FARM 41N-8B-L AWP

Page 3 of 10



REFERENCE WELLPATH IDENTIFICATION

| | | | |
|----------|--------------------------------|----------|---|
| Operator | SRC ENERGY | Slot | SLOT#43 BOST FARM 41N-8B-L (1417'FNL & 940'FWL, SEC.07) |
| Area | COLORADO | Well | BOST FARM 41N-8B-L |
| Field | WELD COUNTY (NAD83,TRUE NORTH) | Wellbore | BOST FARM 41N-8B-L AWB |
| Facility | SEC.07-T05N-R66W | | |

WELLPATH DATA (194 stations)

| MD [ft] | Inclination [°] | Azimuth [°] | TVD [ft] | Vert Sect [ft] | North [ft] | East [ft] | DLS [°/100ft] | Comments |
|------------|--------------------|----------------|-------------|-------------------|---------------|--------------|------------------|----------|
| 2596.00 | 14.060 | 267.590 | 2541.27 | -476.50 | -1.12 | -476.50 | 0.83 | |
| 2690.00 | 14.240 | 266.470 | 2632.42 | -499.45 | -2.31 | -499.45 | 0.35 | |
| 2782.00 | 14.120 | 264.350 | 2721.62 | -521.91 | -4.11 | -521.91 | 0.58 | |
| 2874.00 | 13.840 | 265.560 | 2810.89 | -544.05 | -6.07 | -544.05 | 0.44 | |
| 2968.00 | 14.080 | 270.970 | 2902.12 | -566.70 | -6.74 | -566.69 | 1.41 | |
| 3062.00 | 13.810 | 271.740 | 2993.35 | -589.34 | -6.21 | -589.34 | 0.35 | |
| 3154.00 | 13.880 | 271.540 | 3082.68 | -611.35 | -5.58 | -611.35 | 0.09 | |
| 3246.00 | 13.800 | 273.950 | 3172.01 | -633.33 | -4.53 | -633.32 | 0.63 | |
| 3340.00 | 13.770 | 274.810 | 3263.30 | -655.66 | -2.82 | -655.66 | 0.22 | |
| 3433.00 | 13.790 | 276.780 | 3353.62 | -677.69 | -0.58 | -677.69 | 0.50 | |
| 3526.00 | 13.950 | 277.060 | 3443.91 | -699.82 | 2.11 | -699.82 | 0.19 | |
| 3619.00 | 13.840 | 272.600 | 3534.19 | -722.06 | 3.99 | -722.06 | 1.16 | |
| 3713.00 | 13.840 | 270.540 | 3625.47 | -744.53 | 4.60 | -744.53 | 0.52 | |
| 3805.00 | 14.310 | 262.750 | 3714.71 | -766.82 | 3.27 | -766.82 | 2.12 | |
| 3898.00 | 14.140 | 256.560 | 3804.86 | -789.27 | -0.82 | -789.27 | 1.64 | |
| 3990.00 | 13.900 | 253.920 | 3894.13 | -810.82 | -6.49 | -810.82 | 0.74 | |
| 4084.00 | 13.770 | 253.990 | 3985.40 | -832.42 | -12.70 | -832.42 | 0.14 | |
| 4177.00 | 13.630 | 254.670 | 4075.75 | -853.63 | -18.65 | -853.63 | 0.23 | |
| 4270.00 | 13.730 | 254.120 | 4166.11 | -874.82 | -24.57 | -874.81 | 0.18 | |
| 4364.00 | 13.960 | 255.010 | 4257.38 | -896.50 | -30.56 | -896.49 | 0.33 | |
| 4458.00 | 14.080 | 252.550 | 4348.58 | -918.37 | -36.92 | -918.35 | 0.65 | |
| 4553.00 | 14.180 | 259.250 | 4440.72 | -940.83 | -42.55 | -940.81 | 1.72 | |
| 4646.00 | 14.060 | 271.710 | 4530.93 | -963.31 | -44.34 | -963.30 | 3.26 | |
| 4740.00 | 13.940 | 283.160 | 4622.15 | -985.76 | -41.42 | -985.74 | 2.94 | |
| 4833.00 | 14.330 | 285.900 | 4712.34 | -1007.73 | -35.72 | -1007.72 | 0.83 | |
| 4927.00 | 14.010 | 279.040 | 4803.48 | -1030.16 | -30.74 | -1030.14 | 1.82 | |
| 5021.00 | 14.250 | 273.790 | 4894.64 | -1052.94 | -28.19 | -1052.93 | 1.39 | |
| 5114.00 | 14.260 | 268.180 | 4984.78 | -1075.81 | -27.80 | -1075.80 | 1.48 | |
| 5207.00 | 14.240 | 269.240 | 5074.92 | -1098.69 | -28.31 | -1098.68 | 0.28 | |
| 5300.00 | 14.250 | 268.980 | 5165.06 | -1121.57 | -28.67 | -1121.56 | 0.07 | |



Actual Wellpath Report

BOST FARM 41N-8B-L AWP

Page 4 of 10



REFERENCE WELLPATH IDENTIFICATION

| | | | |
|----------|--------------------------------|----------|---|
| Operator | SRC ENERGY | Slot | SLOT#43 BOST FARM 41N-8B-L (1417'FNL & 940'FWL, SEC.07) |
| Area | COLORADO | Well | BOST FARM 41N-8B-L |
| Field | WELD COUNTY (NAD83,TRUE NORTH) | Wellbore | BOST FARM 41N-8B-L AWB |
| Facility | SEC.07-T05N-R66W | | |

WELLPATH DATA (194 stations) † = interpolated/extrapolated station

| MD [ft] | Inclination [°] | Azimuth [°] | TVD [ft] | Vert Sect [ft] | North [ft] | East [ft] | DLS [°/100ft] | Comments |
|------------|--------------------|----------------|-------------|-------------------|---------------|--------------|------------------|--------------------------------------|
| 5395.00 | 14.520 | 266.810 | 5257.09 | -1145.16 | -29.54 | -1145.15 | 0.63 | |
| 5489.00 | 14.320 | 268.910 | 5348.12 | -1168.54 | -30.42 | -1168.53 | 0.60 | |
| 5583.00 | 14.470 | 275.000 | 5439.18 | -1191.87 | -29.61 | -1191.86 | 1.62 | |
| 5675.00 | 14.310 | 277.540 | 5528.29 | -1214.59 | -27.12 | -1214.58 | 0.71 | |
| 5768.00 | 14.420 | 278.090 | 5618.39 | -1237.45 | -23.98 | -1237.44 | 0.19 | |
| 5862.00 | 14.460 | 276.450 | 5709.42 | -1260.69 | -21.02 | -1260.69 | 0.44 | |
| 5954.00 | 14.080 | 276.390 | 5798.58 | -1283.23 | -18.48 | -1283.22 | 0.41 | |
| 6046.00 | 14.390 | 276.240 | 5887.75 | -1305.71 | -15.99 | -1305.71 | 0.34 | |
| 6139.00 | 14.320 | 273.450 | 5977.85 | -1328.68 | -14.05 | -1328.68 | 0.75 | |
| 6232.00 | 14.450 | 269.790 | 6067.94 | -1351.76 | -13.40 | -1351.76 | 0.99 | |
| 6325.00 | 14.410 | 269.010 | 6158.00 | -1374.94 | -13.64 | -1374.93 | 0.21 | |
| 6419.00 | 14.370 | 270.800 | 6249.05 | -1398.30 | -13.68 | -1398.29 | 0.48 | |
| 6511.00 | 11.300 | 266.890 | 6338.75 | -1418.72 | -14.01 | -1418.71 | 3.47 | |
| 6604.00 | 3.130 | 129.350 | 6431.22 | -1425.89 | -16.12 | -1425.88 | 14.81 | |
| 6697.00 | 13.670 | 93.400 | 6523.13 | -1412.91 | -18.39 | -1412.91 | 12.13 | |
| 6789.00 | 19.760 | 91.800 | 6611.20 | -1386.49 | -19.52 | -1386.49 | 6.64 | |
| 6882.00 | 27.390 | 96.230 | 6696.39 | -1349.46 | -22.34 | -1349.45 | 8.42 | |
| 6976.00 | 37.640 | 99.320 | 6775.55 | -1299.50 | -29.36 | -1299.49 | 11.04 | |
| 7068.00 | 44.170 | 99.740 | 6845.05 | -1240.13 | -39.34 | -1240.12 | 7.10 | |
| 7161.00 | 51.600 | 98.610 | 6907.37 | -1172.07 | -50.29 | -1172.06 | 8.04 | |
| 7253.00 | 60.050 | 95.090 | 6959.01 | -1096.58 | -59.25 | -1096.56 | 9.71 | |
| 7346.00 | 69.390 | 90.700 | 6998.70 | -1012.71 | -63.36 | -1012.69 | 10.91 | |
| 7439.00 | 77.870 | 86.810 | 7024.90 | -923.60 | -61.36 | -923.58 | 9.96 | |
| 7532.00 | 85.310 | 86.550 | 7038.49 | -831.82 | -56.03 | -831.80 | 8.00 | |
| 7580.00† | 87.266 | 87.327 | 7041.60 | -783.99 | -53.48 | -783.97 | 4.38 | LANDING (1485'FNL & 156'FWL, SEC.07) |
| 7626.00 | 89.140 | 88.070 | 7043.04 | -738.05 | -51.63 | -738.04 | 4.38 | |
| 7720.00 | 89.660 | 88.770 | 7044.02 | -644.09 | -49.04 | -644.08 | 0.93 | |
| 7814.00 | 89.690 | 88.690 | 7044.56 | -550.12 | -46.95 | -550.10 | 0.09 | |
| 7907.00 | 89.480 | 90.390 | 7045.23 | -457.13 | -46.21 | -457.11 | 1.84 | |
| 8000.00 | 89.140 | 89.900 | 7046.35 | -364.13 | -46.44 | -364.12 | 0.64 | |



Actual Wellpath Report

BOST FARM 41N-8B-L AWP

Page 5 of 10



REFERENCE WELLPATH IDENTIFICATION

| | | | |
|----------|--------------------------------|----------|---|
| Operator | SRC ENERGY | Slot | SLOT#43 BOST FARM 41N-8B-L (1417'FNL & 940'FWL, SEC.07) |
| Area | COLORADO | Well | BOST FARM 41N-8B-L |
| Field | WELD COUNTY (NAD83,TRUE NORTH) | Wellbore | BOST FARM 41N-8B-L AWB |
| Facility | SEC.07-T05N-R66W | | |

WELLPATH DATA (194 stations)

| MD [ft] | Inclination [°] | Azimuth [°] | TVD [ft] | Vert Sect [ft] | North [ft] | East [ft] | DLS [°/100ft] | Comments |
|------------|--------------------|----------------|-------------|-------------------|---------------|--------------|------------------|----------|
| 8092.00 | 89.320 | 89.150 | 7047.59 | -272.15 | -45.68 | -272.13 | 0.84 | |
| 8185.00 | 89.380 | 89.170 | 7048.64 | -179.16 | -44.32 | -179.15 | 0.07 | |
| 8278.00 | 89.260 | 88.980 | 7049.75 | -86.18 | -42.82 | -86.17 | 0.24 | |
| 8370.00 | 89.050 | 88.840 | 7051.10 | 5.79 | -41.07 | 5.81 | 0.27 | |
| 8463.00 | 89.350 | 89.160 | 7052.40 | 98.77 | -39.44 | 98.78 | 0.47 | |
| 8555.00 | 89.420 | 89.890 | 7053.39 | 190.76 | -38.68 | 190.78 | 0.80 | |
| 8649.00 | 89.110 | 88.600 | 7054.59 | 284.74 | -37.44 | 284.76 | 1.41 | |
| 8742.00 | 89.290 | 88.820 | 7055.89 | 377.71 | -35.35 | 377.72 | 0.31 | |
| 8835.00 | 89.450 | 88.910 | 7056.92 | 470.69 | -33.51 | 470.70 | 0.20 | |
| 8929.00 | 89.450 | 87.810 | 7057.82 | 564.65 | -30.82 | 564.66 | 1.17 | |
| 9023.00 | 89.170 | 87.030 | 7058.95 | 658.54 | -26.59 | 658.55 | 0.88 | |
| 9116.00 | 89.110 | 87.160 | 7060.35 | 751.42 | -21.87 | 751.42 | 0.15 | |
| 9208.00 | 89.510 | 86.310 | 7061.45 | 843.26 | -16.63 | 843.27 | 1.02 | |
| 9301.00 | 87.170 | 85.420 | 7064.15 | 935.97 | -9.93 | 935.98 | 2.69 | |
| 9394.00 | 85.630 | 85.910 | 7069.99 | 1028.53 | -2.92 | 1028.53 | 1.74 | |
| 9486.00 | 85.590 | 87.380 | 7077.03 | 1120.10 | 2.45 | 1120.10 | 1.59 | |
| 9579.00 | 85.590 | 90.970 | 7084.18 | 1212.80 | 3.79 | 1212.80 | 3.85 | |
| 9672.00 | 85.650 | 93.280 | 7091.29 | 1305.45 | 0.35 | 1305.45 | 2.48 | |
| 9766.00 | 86.020 | 93.290 | 7098.11 | 1399.05 | -5.02 | 1399.05 | 0.39 | |
| 9858.00 | 85.680 | 90.120 | 7104.77 | 1490.76 | -7.75 | 1490.76 | 3.46 | |
| 9952.00 | 85.500 | 90.210 | 7112.00 | 1584.48 | -8.02 | 1584.48 | 0.21 | |
| 10045.00 | 85.620 | 90.870 | 7119.20 | 1677.19 | -8.90 | 1677.20 | 0.72 | |
| 10137.00 | 85.280 | 89.830 | 7126.50 | 1768.90 | -9.46 | 1768.90 | 1.19 | |
| 10232.00 | 85.750 | 93.530 | 7133.93 | 1863.55 | -12.23 | 1863.55 | 3.91 | |
| 10326.00 | 85.960 | 94.670 | 7140.73 | 1957.06 | -18.94 | 1957.07 | 1.23 | |
| 10419.00 | 85.560 | 91.330 | 7147.60 | 2049.66 | -23.79 | 2049.67 | 3.61 | |
| 10513.00 | 86.610 | 94.760 | 7154.02 | 2143.29 | -28.77 | 2143.30 | 3.81 | |
| 10607.00 | 86.240 | 96.960 | 7159.89 | 2236.61 | -38.35 | 2236.63 | 2.37 | |
| 10700.00 | 88.830 | 100.580 | 7163.89 | 2328.41 | -52.52 | 2328.43 | 4.78 | |
| 10793.00 | 88.800 | 97.420 | 7165.81 | 2420.23 | -67.06 | 2420.25 | 3.40 | |



Actual Wellpath Report

BOST FARM 41N-8B-L AWP

Page 6 of 10



REFERENCE WELLPATH IDENTIFICATION

| | | | |
|----------|--------------------------------|----------|---|
| Operator | SRC ENERGY | Slot | SLOT#43 BOST FARM 41N-8B-L (1417'FNL & 940'FWL, SEC.07) |
| Area | COLORADO | Well | BOST FARM 41N-8B-L |
| Field | WELD COUNTY (NAD83,TRUE NORTH) | Wellbore | BOST FARM 41N-8B-L AWB |
| Facility | SEC.07-T05N-R66W | | |

WELLPATH DATA (194 stations)

| MD [ft] | Inclination [°] | Azimuth [°] | TVD [ft] | Vert Sect [ft] | North [ft] | East [ft] | DLS [°/100ft] | Comments |
|------------|--------------------|----------------|-------------|-------------------|---------------|--------------|------------------|----------|
| 10887.00 | 88.430 | 92.530 | 7168.08 | 2513.82 | -75.21 | 2513.84 | 5.22 | |
| 10981.00 | 88.490 | 90.790 | 7170.61 | 2607.74 | -77.93 | 2607.77 | 1.85 | |
| 11075.00 | 88.240 | 90.650 | 7173.29 | 2701.69 | -79.11 | 2701.72 | 0.30 | |
| 11168.00 | 88.490 | 88.640 | 7175.95 | 2794.65 | -78.54 | 2794.68 | 2.18 | |
| 11261.00 | 88.550 | 86.500 | 7178.35 | 2887.53 | -74.59 | 2887.56 | 2.30 | |
| 11355.00 | 89.110 | 83.000 | 7180.27 | 2981.10 | -66.00 | 2981.13 | 3.77 | |
| 11448.00 | 88.860 | 80.970 | 7181.92 | 3073.18 | -53.03 | 3073.20 | 2.20 | |
| 11542.00 | 88.980 | 83.110 | 7183.69 | 3166.26 | -40.02 | 3166.27 | 2.28 | |
| 11635.00 | 88.180 | 84.900 | 7185.99 | 3258.72 | -30.31 | 3258.73 | 2.11 | |
| 11728.00 | 88.340 | 85.060 | 7188.82 | 3351.32 | -22.17 | 3351.33 | 0.24 | |
| 11821.00 | 88.240 | 84.150 | 7191.59 | 3443.87 | -13.43 | 3443.88 | 0.98 | |
| 11914.00 | 88.240 | 83.650 | 7194.45 | 3536.30 | -3.55 | 3536.31 | 0.54 | |
| 12006.00 | 89.510 | 86.800 | 7196.25 | 3627.96 | 4.10 | 3627.96 | 3.69 | |
| 12099.00 | 89.510 | 90.410 | 7197.05 | 3720.91 | 6.36 | 3720.91 | 3.88 | |
| 12192.00 | 89.290 | 93.660 | 7198.02 | 3813.83 | 3.06 | 3813.83 | 3.50 | |
| 12285.00 | 89.230 | 94.210 | 7199.22 | 3906.60 | -3.32 | 3906.61 | 0.59 | |
| 12377.00 | 89.050 | 93.760 | 7200.61 | 3998.37 | -9.71 | 3998.37 | 0.53 | |
| 12470.00 | 89.170 | 93.000 | 7202.05 | 4091.19 | -15.19 | 4091.20 | 0.83 | |
| 12564.00 | 89.350 | 93.760 | 7203.26 | 4185.02 | -20.74 | 4185.03 | 0.83 | |
| 12659.00 | 89.480 | 95.370 | 7204.23 | 4279.71 | -28.30 | 4279.72 | 1.70 | |
| 12751.00 | 89.540 | 95.390 | 7205.02 | 4371.30 | -36.92 | 4371.31 | 0.07 | |
| 12845.00 | 89.480 | 96.630 | 7205.83 | 4464.77 | -46.76 | 4464.79 | 1.32 | |
| 12937.00 | 89.570 | 94.930 | 7206.59 | 4556.29 | -56.03 | 4556.31 | 1.85 | |
| 13032.00 | 90.120 | 93.090 | 7206.84 | 4651.05 | -62.67 | 4651.07 | 2.02 | |
| 13126.00 | 89.420 | 91.010 | 7207.22 | 4744.98 | -66.03 | 4745.01 | 2.33 | |
| 13219.00 | 88.920 | 89.150 | 7208.57 | 4837.97 | -66.16 | 4837.99 | 2.07 | |
| 13311.00 | 89.540 | 88.090 | 7209.81 | 4929.93 | -63.95 | 4929.96 | 1.33 | |
| 13405.00 | 89.720 | 87.090 | 7210.41 | 5023.85 | -60.00 | 5023.87 | 1.08 | |
| 13499.00 | 89.690 | 86.220 | 7210.90 | 5117.69 | -54.51 | 5117.71 | 0.93 | |
| 13592.00 | 89.320 | 86.860 | 7211.70 | 5210.52 | -48.90 | 5210.54 | 0.79 | |



Actual Wellpath Report

BOST FARM 41N-8B-L AWP

Page 7 of 10



REFERENCE WELLPATH IDENTIFICATION

| | | | |
|----------|--------------------------------|----------|---|
| Operator | SRC ENERGY | Slot | SLOT#43 BOST FARM 41N-8B-L (1417'FNL & 940'FWL, SEC.07) |
| Area | COLORADO | Well | BOST FARM 41N-8B-L |
| Field | WELD COUNTY (NAD83,TRUE NORTH) | Wellbore | BOST FARM 41N-8B-L AWB |
| Facility | SEC.07-T05N-R66W | | |

WELLPATH DATA (194 stations)

| MD [ft] | Inclination [°] | Azimuth [°] | TVD [ft] | Vert Sect [ft] | North [ft] | East [ft] | DLS [°/100ft] | Comments |
|------------|--------------------|----------------|-------------|-------------------|---------------|--------------|------------------|----------|
| 13687.00 | 89.050 | 89.110 | 7213.05 | 5305.44 | -45.56 | 5305.46 | 2.39 | |
| 13779.00 | 89.450 | 91.350 | 7214.26 | 5397.43 | -45.93 | 5397.45 | 2.47 | |
| 13873.00 | 89.540 | 92.640 | 7215.08 | 5491.37 | -49.20 | 5491.38 | 1.38 | |
| 13966.00 | 89.450 | 90.860 | 7215.90 | 5584.31 | -52.04 | 5584.33 | 1.92 | |
| 14060.00 | 89.350 | 92.270 | 7216.89 | 5678.27 | -54.61 | 5678.29 | 1.50 | |
| 14154.00 | 89.570 | 91.760 | 7217.77 | 5772.21 | -57.91 | 5772.23 | 0.59 | |
| 14248.00 | 89.480 | 90.560 | 7218.55 | 5866.18 | -59.81 | 5866.20 | 1.28 | |
| 14342.00 | 89.540 | 89.620 | 7219.36 | 5960.18 | -59.96 | 5960.20 | 1.00 | |
| 14434.00 | 89.850 | 88.250 | 7219.85 | 6052.16 | -58.25 | 6052.18 | 1.53 | |
| 14527.00 | 89.660 | 86.920 | 7220.25 | 6145.07 | -54.33 | 6145.09 | 1.44 | |
| 14619.00 | 89.880 | 86.080 | 7220.61 | 6236.90 | -48.72 | 6236.92 | 0.94 | |
| 14712.00 | 89.690 | 91.010 | 7220.96 | 6329.84 | -46.36 | 6329.86 | 5.30 | |
| 14806.00 | 89.820 | 91.670 | 7221.37 | 6423.82 | -48.56 | 6423.83 | 0.72 | |
| 14899.00 | 89.600 | 90.820 | 7221.84 | 6516.79 | -50.58 | 6516.81 | 0.94 | |
| 14993.00 | 90.000 | 90.450 | 7222.16 | 6610.78 | -51.62 | 6610.80 | 0.58 | |
| 15086.00 | 90.090 | 88.950 | 7222.09 | 6703.78 | -51.13 | 6703.80 | 1.62 | |
| 15178.00 | 89.880 | 89.060 | 7222.12 | 6795.77 | -49.53 | 6795.78 | 0.26 | |
| 15273.00 | 89.750 | 88.300 | 7222.42 | 6890.74 | -47.34 | 6890.76 | 0.81 | |
| 15365.00 | 89.940 | 88.050 | 7222.67 | 6982.70 | -44.41 | 6982.71 | 0.34 | |
| 15458.00 | 89.880 | 87.860 | 7222.82 | 7075.64 | -41.10 | 7075.65 | 0.21 | |
| 15550.00 | 89.880 | 89.140 | 7223.01 | 7167.60 | -38.69 | 7167.62 | 1.39 | |
| 15643.00 | 89.750 | 89.830 | 7223.31 | 7260.60 | -37.85 | 7260.61 | 0.75 | |
| 15735.00 | 89.880 | 90.490 | 7223.61 | 7352.60 | -38.11 | 7352.61 | 0.73 | |
| 15827.00 | 89.850 | 90.730 | 7223.82 | 7444.59 | -39.09 | 7444.61 | 0.26 | |
| 15921.00 | 89.880 | 90.260 | 7224.05 | 7538.59 | -39.90 | 7538.60 | 0.50 | |
| 16014.00 | 89.850 | 90.880 | 7224.26 | 7631.58 | -40.83 | 7631.60 | 0.67 | |
| 16109.00 | 89.910 | 92.000 | 7224.46 | 7726.55 | -43.21 | 7726.57 | 1.18 | |
| 16201.00 | 89.850 | 91.910 | 7224.66 | 7818.50 | -46.35 | 7818.51 | 0.12 | |
| 16296.00 | 89.750 | 91.810 | 7224.99 | 7913.44 | -49.43 | 7913.46 | 0.15 | |
| 16389.00 | 89.880 | 91.140 | 7225.29 | 8006.41 | -51.83 | 8006.43 | 0.73 | |



Actual Wellpath Report

BOST FARM 41N-8B-L AWP

Page 8 of 10



REFERENCE WELLPATH IDENTIFICATION

| | | | |
|----------|--------------------------------|----------|---|
| Operator | SRC ENERGY | Slot | SLOT#43 BOST FARM 41N-8B-L (1417'FNL & 940'FWL, SEC.07) |
| Area | COLORADO | Well | BOST FARM 41N-8B-L |
| Field | WELD COUNTY (NAD83,TRUE NORTH) | Wellbore | BOST FARM 41N-8B-L AWB |
| Facility | SEC.07-T05N-R66W | | |

WELLPATH DATA (194 stations)

| MD [ft] | Inclination [°] | Azimuth [°] | TVD [ft] | Vert Sect [ft] | North [ft] | East [ft] | DLS [°/100ft] | Comments |
|------------|--------------------|----------------|-------------|-------------------|---------------|--------------|------------------|---|
| 16482.00 | 89.320 | 90.600 | 7225.94 | 8099.40 | -53.24 | 8099.42 | 0.84 | |
| 16575.00 | 89.260 | 90.660 | 7227.09 | 8192.38 | -54.26 | 8192.40 | 0.09 | |
| 16668.00 | 89.260 | 91.040 | 7228.29 | 8285.36 | -55.64 | 8285.38 | 0.41 | |
| 16760.00 | 89.320 | 91.850 | 7229.43 | 8377.33 | -57.96 | 8377.35 | 0.88 | |
| 16853.00 | 89.780 | 92.130 | 7230.16 | 8470.27 | -61.19 | 8470.29 | 0.58 | |
| 16946.00 | 89.260 | 93.900 | 7230.94 | 8563.13 | -66.08 | 8563.15 | 1.98 | |
| 17041.00 | 89.170 | 94.990 | 7232.24 | 8657.83 | -73.44 | 8657.86 | 1.15 | |
| 17136.00 | 89.420 | 91.010 | 7233.41 | 8752.67 | -78.42 | 8752.70 | 4.20 | |
| 17229.00 | 89.260 | 90.090 | 7234.48 | 8845.66 | -79.31 | 8845.69 | 1.00 | |
| 17321.00 | 89.380 | 90.760 | 7235.57 | 8937.65 | -79.99 | 8937.68 | 0.74 | |
| 17414.00 | 89.350 | 91.880 | 7236.61 | 9030.62 | -82.13 | 9030.65 | 1.20 | |
| 17507.00 | 89.420 | 92.760 | 7237.60 | 9123.53 | -85.90 | 9123.56 | 0.95 | |
| 17596.00 | 89.260 | 93.050 | 7238.63 | 9212.41 | -90.41 | 9212.44 | 0.37 | LAST BH SURVEY (1465'FNL & 419'FEL, SEC.08) |
| 17620.00 | 89.260 | 93.050 | 7238.94 | 9236.38 | -91.68 | 9236.41 | 0.00 | PROJ TO BIT (1466'FNL & 395'FEL, SEC.08) |

HOLE & CASING SECTIONS - Ref Wellbore: BOST FARM 41N-8B-L AWB Ref Wellpath: BOST FARM 41N-8B-L AWP

| String/Diameter | Start MD [ft] | End MD [ft] | Interval [ft] | Start TVD [ft] | End TVD [ft] | Start N/S [ft] | Start E/W [ft] | End N/S [ft] | End E/W [ft] |
|------------------------|------------------|----------------|------------------|-------------------|-----------------|-------------------|-------------------|-----------------|-----------------|
| 13.5in Open Hole | 20.00 | 1807.00 | 1787.00 | 20.00 | 1776.21 | 0.00 | 0.00 | -8.76 | -283.96 |
| 9.625in Casing Surface | 20.00 | 1807.00 | 1787.00 | 20.00 | 1776.21 | 0.00 | 0.00 | -8.76 | -283.96 |
| 8.5in Open Hole | 1807.00 | 17620.00 | 15813.00 | 1776.21 | 7238.94 | -8.76 | -283.96 | -91.68 | 9236.41 |



Actual Wellpath Report

BOST FARM 41N-8B-L AWP

Page 9 of 10



REFERENCE WELLPATH IDENTIFICATION

| | | | |
|----------|--------------------------------|----------|---|
| Operator | SRC ENERGY | Slot | SLOT#43 BOST FARM 41N-8B-L (1417'FNL & 940'FWL, SEC.07) |
| Area | COLORADO | Well | BOST FARM 41N-8B-L |
| Field | WELD COUNTY (NAD83,TRUE NORTH) | Wellbore | BOST FARM 41N-8B-L AWB |
| Facility | SEC.07-T05N-R66W | | |

TARGETS

| Name | TVD [ft] | North [ft] | East [ft] | Grid East [US ft] | Grid North [US ft] | Latitude | Longitude | Shape |
|---|-------------|---------------|--------------|----------------------|-----------------------|----------------|-----------------|---------|
| SEC.07-T05N-R66W | 25.00 | -1388.74 | 324.41 | 3187161.59 | 1394309.79 | 40°24'49.806"N | 104°49'40.249"W | polygon |
| SEC.08-T05N-R66W | 25.00 | -1388.74 | 324.41 | 3187161.59 | 1394309.79 | 40°24'49.806"N | 104°49'40.249"W | polygon |
| BOST FARM 41N-8B-L TOP OF PROD ON PLAT (1466'FNL & 150'FWL, SEC.07) | 6992.00 | -34.58 | -789.70 | 3186037.31 | 1395655.43 | 40°25'03.187"N | 104°49'54.653"W | point |
| BOST FARM 41N-8B-L TOP OF PROD REV-1 (1466'FNL & 150'FWL, SEC.07) | 7041.54 | -34.58 | -789.70 | 3186037.31 | 1395655.43 | 40°25'03.187"N | 104°49'54.653"W | point |
| BOST FARM 41N-8B-L BHL ON PLAT (1425'FNL & 460'FEL, SEC.08) | 7206.00 | -50.37 | 9171.01 | 3195997.45 | 1395715.00 | 40°25'03.014"N | 104°47'45.874"W | point |
| BOST FARM 41N-8B-L BHL REV-1 (1425'FNL & 460'FEL, SEC.08) | 7233.85 | -50.37 | 9171.01 | 3195997.45 | 1395715.00 | 40°25'03.014"N | 104°47'45.874"W | point |
| BOST FARM 1N-8C-L HARDLINE BOX | 7286.00 | 79.85 | 0.54 | 3186826.63 | 1395775.82 | 40°25'04.318"N | 104°49'44.436"W | polygon |

WELLPATH COMPOSITION - Ref Wellbore: BOST FARM 41N-8B-L AWB Ref Wellpath: BOST FARM 41N-8B-L AWP

| Start MD [ft] | End MD [ft] | Positional Uncertainty Model | Log Name/Comment | Wellbore |
|------------------|----------------|---|--------------------------------------|------------------------|
| 20.00 | 1757.00 | BHI NaviTrak (Standard) | 13 1/2" SURFACE SECTION <121-1741> | BOST FARM 41N-8B-L AWB |
| 1757.00 | 17596.00 | BHI AutoTrak Curve (MagCAD+IFR1, Short spacing) | 8 1/2" MONOBORE SURVEYS <1853-17596> | BOST FARM 41N-8B-L AWB |
| 17596.00 | 17620.00 | Blind Drilling (std) | Projection to bit | BOST FARM 41N-8B-L AWB |



Actual Wellpath Report

BOST FARM 41N-8B-L AWP

Page 10 of 10



| REFERENCE WELLPATH IDENTIFICATION | | | |
|-----------------------------------|--------------------------------|----------|---|
| Operator | SRC ENERGY | Slot | SLOT#43 BOST FARM 41N-8B-L (1417'FNL & 940'FWL, SEC.07) |
| Area | COLORADO | Well | BOST FARM 41N-8B-L |
| Field | WELD COUNTY (NAD83,TRUE NORTH) | Wellbore | BOST FARM 41N-8B-L AWB |
| Facility | SEC.07-T05N-R66W | | |

| WELLPATH COMMENTS | | | | |
|-------------------|--------------------|----------------|-------------|---|
| MD [ft] | Inclination [°] | Azimuth [°] | TVD [ft] | Comment |
| 7580.00 | 87.266 | 87.327 | 7041.60 | LANDING (1485'FNL & 156'FWL, SEC.07) |
| 17596.00 | 89.260 | 93.050 | 7238.63 | LAST BH SURVEY (1465'FNL & 419'FEL, SEC.08) |
| 17620.00 | 89.260 | 93.050 | 7238.94 | PROJ TO BIT (1466'FNL & 395'FEL, SEC.08) |