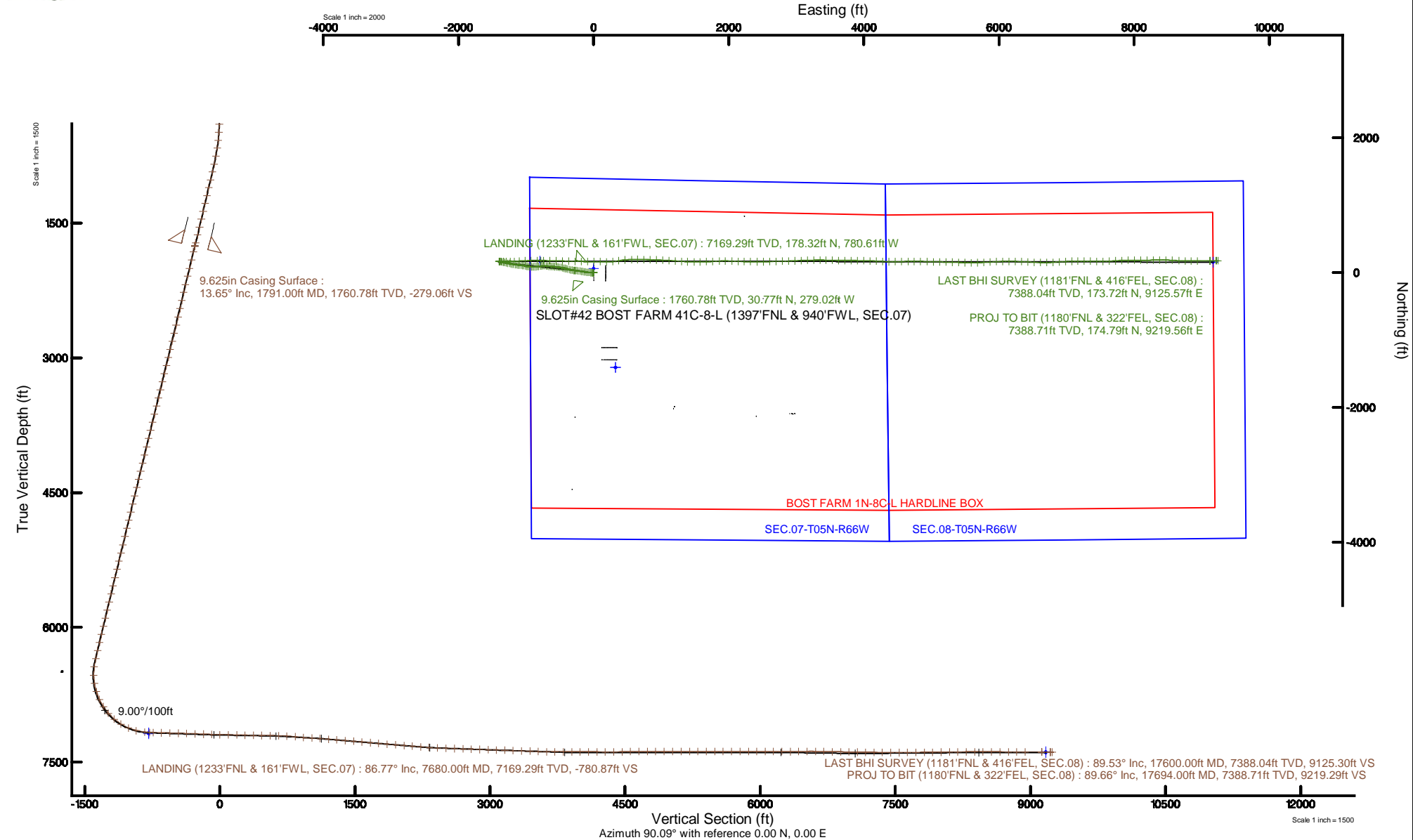


SRC ENERGY

Location: COLORADO Slot: SLOT#42 BOST FARM 41C-8-L (1397'FNL & 940'FWL, SEC.07)
Field: WELD COUNTY (NAD83,TRUE NORTH) Well: BOST FARM 41C-8-L
Facility: SEC.07-T05N-R66W Wellbore: BOST FARM 41C-8-L PWB

Plot reference wellpath is BOST FARM 41C-8-L (REV-B.0) PWP	Grid System: NAD83 / Lambert Colorado SP, Northern Zone (501), US feet
True vertical depths are referenced to PRECISION 462 (20') (RKB)	North Reference: True north
Measured depths are referenced to PRECISION 462 (20') (RKB)	Scale: True distance
PRECISION 462 (20') (RKB) to Mean Sea Level: 4901 feet	Depths are in feet
Mean Sea Level to Mud line (At Slot: SLOT#42 BOST FARM 41C-8-L (1397'FNL & 940'FWL, SEC.07)): 0 feet	Created by: hanisab on 2019-02-04
Coordinates are in feet referenced to Slot	Database: WellArchitectDB





Actual Wellpath Report

BOST FARM 41C-8-L AWP

Page 1 of 10



REFERENCE WELLPATH IDENTIFICATION

Operator	SRC ENERGY	Slot	SLOT#42 BOST FARM 41C-8-L (1397'FNL & 940'FWL, SEC.07)
Area	COLORADO	Well	BOST FARM 41C-8-L
Field	WELD COUNTY (NAD83,TRUE NORTH)	Wellbore	BOST FARM 41C-8-L AWB
Facility	SEC.07-T05N-R66W		

REPORT SETUP INFORMATION

Projection System	NAD83 / Lambert Colorado SP, Northern Zone (501), US feet	Software System	WellArchitect® 5.1
North Reference	True	User	Hanisab
Scale	0.999961	Report Generated	2/4/2019 at 10:43:38 PM
Convergence at slot	0.43° East	Database/Source file	WellArchitectDB/BOST_FARM_41C-8-L_AWP.xml

WELLPATH LOCATION

	Local coordinates		Grid coordinates		Geographic coordinates	
	North[ft]	East[ft]	Easting[US ft]	Northing[US ft]	Latitude	Longitude
Slot Location	1408.48	-324.16	3186826.78	1395715.71	40°25'03.724"N	104°49'44.440"W
Facility Reference Pt			3187161.59	1394309.79	40°24'49.806"N	104°49'40.249"W
Field Reference Pt			3171284.48	1426358.81	40°30'07.643"N	104°53'02.634"W

WELLPATH DATUM

Calculation method	Minimum curvature	PRECISION 462 (20') (RKB) to Facility Vertical Datum	4901.00ft
Horizontal Reference Pt	Slot	PRECISION 462 (20') (RKB) to Mean Sea Level	4901.00ft
Vertical Reference Pt	PRECISION 462 (20') (RKB)	PRECISION 462 (20') (RKB) to Mud Line at Slot (SLOT#42 BOST FARM 41C-8-L (1397'FNL & 940'FWL, SEC.07))	4901.00ft
MD Reference Pt	PRECISION 462 (20') (RKB)	Section Origin	N 0.00, E 0.00 ft
Field Vertical Reference	Mean Sea Level	Section Azimuth	90.09°



Actual Wellpath Report

BOST FARM 41C-8-L AWP

Page 2 of 10



REFERENCE WELLPATH IDENTIFICATION

Operator	SRC ENERGY	Slot	SLOT#42 BOST FARM 41C-8-L (1397'FNL & 940'FWL, SEC.07)
Area	COLORADO	Well	BOST FARM 41C-8-L
Field	WELD COUNTY (NAD83,TRUE NORTH)	Wellbore	BOST FARM 41C-8-L AWB
Facility	SEC.07-T05N-R66W		

WELLPATH DATA (194 stations) † = interpolated/extrapolated station

MD [ft]	Inclination [°]	Azimuth [°]	TVD [ft]	Vert Sect [ft]	North [ft]	East [ft]	DLS [°/100ft]	Comments
0.00†	0.000	158.530	0.00	0.00	0.00	0.00	0.00	
20.00	0.000	158.530	20.00	0.00	0.00	0.00	0.00	
137.00	0.240	158.530	137.00	0.09	-0.23	0.09	0.21	
226.00	0.210	312.480	226.00	0.04	-0.29	0.04	0.49	
309.00	1.520	275.330	308.99	-1.17	-0.09	-1.17	1.64	
399.00	3.260	266.440	398.91	-4.91	-0.13	-4.91	1.97	
489.00	3.180	261.600	488.77	-9.94	-0.66	-9.94	0.31	
579.00	6.430	264.310	578.44	-17.42	-1.52	-17.42	3.62	
669.00	9.380	276.010	667.58	-29.73	-1.25	-29.74	3.72	
759.00	9.990	277.510	756.29	-44.77	0.53	-44.77	0.73	
849.00	12.580	273.270	844.55	-62.30	2.11	-62.30	3.02	
939.00	12.820	277.100	932.35	-82.00	3.91	-81.99	0.97	
1029.00	13.780	278.520	1019.93	-102.51	6.73	-102.50	1.13	
1119.00	13.440	278.850	1107.41	-123.45	9.93	-123.44	0.39	
1209.00	13.360	278.770	1194.96	-144.07	13.12	-144.05	0.09	
1299.00	13.320	278.750	1282.53	-164.59	16.28	-164.57	0.04	
1389.00	13.110	279.740	1370.14	-184.91	19.59	-184.88	0.34	
1479.00	12.900	278.940	1457.84	-204.89	22.88	-204.86	0.31	
1569.00	13.440	276.630	1545.47	-225.21	25.64	-225.17	0.84	
1659.00	14.500	274.910	1632.81	-246.83	27.82	-246.79	1.26	
1749.00	14.130	275.320	1720.01	-269.00	29.80	-268.95	0.43	
1781.00	13.840	275.580	1751.06	-276.70	30.53	-276.65	0.93	
1853.00	12.480	277.600	1821.17	-292.98	32.40	-292.94	1.99	
1947.00	13.870	280.230	1912.70	-314.14	35.74	-314.09	1.61	
2041.00	13.980	281.470	2003.93	-336.37	40.00	-336.31	0.34	
2133.00	14.060	282.720	2093.19	-358.17	44.67	-358.10	0.34	
2227.00	13.590	282.550	2184.47	-380.09	49.59	-380.02	0.50	
2319.00	13.490	286.230	2273.91	-400.95	54.94	-400.87	0.94	
2411.00	13.230	284.630	2363.42	-421.45	60.59	-421.36	0.49	
2504.00	13.300	284.910	2453.94	-442.09	66.03	-441.99	0.10	



Actual Wellpath Report

BOST FARM 41C-8-L AWP

Page 3 of 10



REFERENCE WELLPATH IDENTIFICATION

Operator	SRC ENERGY	Slot	SLOT#42 BOST FARM 41C-8-L (1397'FNL & 940'FWL, SEC.07)
Area	COLORADO	Well	BOST FARM 41C-8-L
Field	WELD COUNTY (NAD83,TRUE NORTH)	Wellbore	BOST FARM 41C-8-L AWP
Facility	SEC.07-T05N-R66W		

WELLPATH DATA (194 stations)

MD [ft]	Inclination [°]	Azimuth [°]	TVD [ft]	Vert Sect [ft]	North [ft]	East [ft]	DLS [°/100ft]	Comments
2597.00	13.410	284.460	2544.43	-462.88	71.48	-462.77	0.16	
2691.00	13.580	279.580	2635.84	-484.32	76.04	-484.21	1.22	
2783.00	13.820	275.500	2725.22	-505.92	78.89	-505.80	1.08	
2875.00	13.630	276.740	2814.59	-527.62	81.21	-527.50	0.38	
2969.00	13.970	279.140	2905.88	-549.83	84.32	-549.70	0.71	
3062.00	13.660	276.180	2996.19	-571.83	87.28	-571.71	0.83	
3155.00	13.630	274.720	3086.57	-593.68	89.37	-593.54	0.37	
3247.00	13.830	274.140	3175.94	-615.45	91.05	-615.31	0.26	
3340.00	13.500	274.090	3266.31	-637.37	92.63	-637.23	0.36	
3433.00	13.640	274.830	3356.71	-659.12	94.33	-658.98	0.24	
3526.00	13.590	276.780	3447.10	-680.90	96.54	-680.76	0.50	
3619.00	13.650	277.890	3537.48	-702.63	99.34	-702.48	0.29	
3713.00	13.810	276.100	3628.80	-724.77	102.05	-724.62	0.48	
3806.00	13.900	267.640	3719.10	-746.97	102.77	-746.82	2.18	
3899.00	13.900	259.450	3809.38	-769.11	100.26	-768.97	2.11	
3991.00	13.870	258.880	3898.70	-790.79	96.11	-790.65	0.15	
4085.00	13.640	259.610	3990.00	-812.74	91.94	-812.61	0.31	
4178.00	13.710	264.270	4080.37	-834.49	88.86	-834.36	1.19	
4271.00	13.910	269.430	4170.68	-856.63	87.65	-856.50	1.34	
4365.00	13.550	268.760	4262.00	-878.94	87.30	-878.81	0.42	
4459.00	13.710	267.190	4353.35	-901.07	86.52	-900.95	0.43	
4553.00	13.890	267.620	4444.64	-923.47	85.50	-923.35	0.22	
4647.00	13.750	273.000	4535.92	-945.90	85.62	-945.78	1.37	
4740.00	13.650	283.440	4626.29	-967.62	88.75	-967.49	2.66	
4834.00	13.500	285.490	4717.66	-988.99	94.26	-988.85	0.54	
4928.00	13.520	282.180	4809.06	-1010.31	99.51	-1010.17	0.82	
5021.00	13.800	279.050	4899.43	-1031.90	103.54	-1031.75	0.85	
5114.00	13.520	276.790	4989.80	-1053.65	106.57	-1053.49	0.65	
5208.00	13.550	275.200	5081.19	-1075.53	108.87	-1075.37	0.40	
5301.00	13.690	277.800	5171.58	-1097.29	111.35	-1097.12	0.68	



Actual Wellpath Report

BOST FARM 41C-8-L AWP

Page 4 of 10



REFERENCE WELLPATH IDENTIFICATION

Operator	SRC ENERGY	Slot	SLOT#42 BOST FARM 41C-8-L (1397'FNL & 940'FWL, SEC.07)
Area	COLORADO	Well	BOST FARM 41C-8-L
Field	WELD COUNTY (NAD83,TRUE NORTH)	Wellbore	BOST FARM 41C-8-L AWB
Facility	SEC.07-T05N-R66W		

WELLPATH DATA (194 stations) † = interpolated/extrapolated station

MD [ft]	Inclination [°]	Azimuth [°]	TVD [ft]	Vert Sect [ft]	North [ft]	East [ft]	DLS [°/100ft]	Comments
5396.00	13.590	277.010	5263.90	-1119.51	114.24	-1119.34	0.22	
5490.00	13.820	276.210	5355.22	-1141.63	116.80	-1141.46	0.32	
5583.00	13.800	276.500	5445.53	-1163.70	119.26	-1163.53	0.08	
5676.00	13.620	277.570	5535.88	-1185.58	121.96	-1185.40	0.33	
5769.00	13.530	281.480	5626.29	-1207.10	125.56	-1206.92	0.99	
5862.00	13.540	283.480	5716.70	-1228.36	130.27	-1228.16	0.50	
5954.00	13.660	282.750	5806.12	-1249.43	135.18	-1249.23	0.23	
6047.00	13.590	282.790	5896.51	-1270.81	140.02	-1270.60	0.08	
6140.00	13.700	283.130	5986.88	-1292.19	144.94	-1291.98	0.15	
6233.00	13.680	281.180	6077.24	-1313.71	149.57	-1313.49	0.50	
6326.00	13.550	281.670	6167.63	-1335.18	153.91	-1334.95	0.19	
6419.00	13.610	283.690	6258.03	-1356.49	158.70	-1356.25	0.51	
6512.00	13.410	283.830	6348.46	-1377.60	163.87	-1377.35	0.22	
6604.00	8.360	267.480	6438.79	-1394.65	166.13	-1394.41	6.38	
6698.00	0.950	106.730	6532.49	-1400.75	165.60	-1400.50	9.85	
6790.00	10.320	88.550	6623.95	-1391.76	165.59	-1391.52	10.24	
6883.00	17.200	89.200	6714.22	-1369.66	165.99	-1369.41	7.40	
6977.00	24.380	91.690	6802.05	-1336.32	165.62	-1336.08	7.69	
7069.00	33.110	90.720	6882.63	-1292.13	164.74	-1291.89	9.50	
7162.00	40.840	89.440	6956.87	-1236.24	164.72	-1236.00	8.35	
7254.00	48.800	87.010	7022.08	-1171.49	166.82	-1171.24	8.85	
7346.00	58.550	86.580	7076.52	-1097.58	170.98	-1097.33	10.60	
7440.00	66.900	87.530	7119.55	-1014.22	175.24	-1013.96	8.93	
7532.00	75.720	88.830	7149.01	-927.21	177.98	-926.95	9.68	
7627.00	84.540	90.230	7165.28	-833.71	178.73	-833.45	9.40	
7680.00†	86.767	90.659	7169.29	-780.87	178.32	-780.61	4.28	LANDING (1233'FNL & 161'FWL, SEC.07)
7721.00	88.490	90.990	7170.99	-739.91	177.73	-739.65	4.28	
7814.00	88.310	90.840	7173.59	-646.96	176.24	-646.70	0.25	
7908.00	88.490	91.390	7176.21	-553.01	174.42	-552.75	0.62	
8001.00	88.310	92.280	7178.81	-460.09	171.44	-459.84	0.98	



Actual Wellpath Report

BOST FARM 41C-8-L AWP

Page 5 of 10



REFERENCE WELLPATH IDENTIFICATION

Operator	SRC ENERGY	Slot	SLOT#42 BOST FARM 41C-8-L (1397'FNL & 940'FWL, SEC.07)
Area	COLORADO	Well	BOST FARM 41C-8-L
Field	WELD COUNTY (NAD83,TRUE NORTH)	Wellbore	BOST FARM 41C-8-L AWB
Facility	SEC.07-T05N-R66W		

WELLPATH DATA (194 stations)

MD [ft]	Inclination [°]	Azimuth [°]	TVD [ft]	Vert Sect [ft]	North [ft]	East [ft]	DLS [°/100ft]	Comments
8093.00	87.880	91.930	7181.87	-368.20	168.06	-367.95	0.60	
8185.00	88.060	91.260	7185.13	-276.29	165.50	-276.04	0.75	
8279.00	87.660	90.370	7188.64	-182.36	164.17	-182.12	1.04	
8371.00	87.810	90.170	7192.27	-90.43	163.73	-90.19	0.27	
8463.00	89.510	91.050	7194.42	1.53	162.75	1.77	2.08	
8556.00	88.860	90.580	7195.75	94.51	161.43	94.75	0.86	
8649.00	89.050	92.360	7197.44	187.47	159.05	187.70	1.92	
8743.00	87.940	83.750	7199.92	281.29	162.23	281.53	9.23	
8835.00	89.170	79.590	7202.24	372.25	175.55	372.51	4.71	
8929.00	89.010	85.420	7203.73	465.37	187.81	465.65	6.20	
9024.00	89.260	88.840	7205.16	560.22	192.56	560.51	3.61	
9117.00	89.260	89.780	7206.37	653.20	193.68	653.49	1.01	
9209.00	85.560	91.580	7210.52	745.08	192.59	745.37	4.47	
9302.00	85.100	91.440	7218.09	837.75	190.15	838.03	0.52	
9395.00	84.970	91.810	7226.14	930.36	187.52	930.64	0.42	
9487.00	86.920	93.330	7232.65	1022.04	183.41	1022.31	2.68	
9580.00	86.580	93.720	7237.92	1114.72	177.70	1114.99	0.56	
9673.00	84.910	93.860	7244.82	1207.27	171.57	1207.53	1.80	
9766.00	85.010	93.090	7252.99	1299.75	165.95	1299.99	0.83	
9859.00	85.500	92.900	7260.69	1392.31	161.11	1392.55	0.56	
9953.00	85.410	90.070	7268.14	1485.98	158.68	1486.21	3.00	
10046.00	85.100	89.060	7275.83	1578.65	159.39	1578.89	1.13	
10138.00	85.160	88.650	7283.64	1670.30	161.22	1670.54	0.45	
10232.00	85.220	86.890	7291.52	1763.89	164.86	1764.13	1.87	
10327.00	85.410	87.430	7299.28	1858.45	169.55	1858.70	0.60	
10420.00	85.190	90.400	7306.90	1951.10	171.31	1951.36	3.19	
10514.00	85.100	91.590	7314.86	2044.75	169.68	2045.01	1.27	
10608.00	85.160	91.930	7322.84	2138.37	166.81	2138.62	0.37	
10701.00	85.040	91.660	7330.78	2230.99	163.90	2231.24	0.32	
10793.00	86.090	91.340	7337.90	2322.69	161.50	2322.93	1.19	



Actual Wellpath Report

BOST FARM 41C-8-L AWP

Page 6 of 10



REFERENCE WELLPATH IDENTIFICATION

Operator	SRC ENERGY	Slot	SLOT#42 BOST FARM 41C-8-L (1397'FNL & 940'FWL, SEC.07)
Area	COLORADO	Well	BOST FARM 41C-8-L
Field	WELD COUNTY (NAD83,TRUE NORTH)	Wellbore	BOST FARM 41C-8-L AWB
Facility	SEC.07-T05N-R66W		

WELLPATH DATA (194 stations)

MD [ft]	Inclination [°]	Azimuth [°]	TVD [ft]	Vert Sect [ft]	North [ft]	East [ft]	DLS [°/100ft]	Comments
10888.00	87.940	90.140	7342.84	2417.55	160.28	2417.79	2.32	
10982.00	88.210	88.870	7346.00	2511.49	161.09	2511.73	1.38	
11076.00	88.180	87.730	7348.96	2605.39	163.88	2605.64	1.21	
11169.00	87.780	89.140	7352.24	2698.29	166.42	2698.54	1.58	
11262.00	88.150	88.990	7355.54	2791.22	167.93	2791.47	0.43	
11356.00	88.210	87.980	7358.53	2885.13	170.42	2885.39	1.08	
11449.00	87.940	87.420	7361.65	2978.00	174.15	2978.26	0.67	
11543.00	88.000	87.780	7364.98	3071.85	178.08	3072.12	0.39	
11636.00	88.000	87.920	7368.23	3164.73	181.57	3165.00	0.15	
11728.00	87.810	89.220	7371.59	3256.63	183.86	3256.91	1.43	
11821.00	87.970	89.990	7375.02	3349.56	184.50	3349.84	0.85	
11914.00	88.150	91.390	7378.16	3442.50	183.38	3442.78	1.52	
12007.00	88.000	91.100	7381.29	3535.43	181.36	3535.70	0.35	
12100.00	88.400	90.630	7384.21	3628.38	179.96	3628.65	0.66	
12193.00	89.940	90.460	7385.56	3721.36	179.08	3721.63	1.67	
12286.00	90.000	90.560	7385.61	3814.36	178.25	3814.63	0.13	
12378.00	90.120	90.900	7385.51	3906.35	177.08	3906.62	0.39	
12471.00	89.880	91.230	7385.51	3999.34	175.35	3999.60	0.44	
12565.00	89.910	91.790	7385.68	4093.31	172.87	4093.57	0.60	
12659.00	89.630	92.520	7386.06	4187.25	169.34	4187.50	0.83	
12752.00	89.720	93.650	7386.59	4280.11	164.33	4280.36	1.22	
12846.00	90.060	90.480	7386.77	4374.05	160.94	4374.29	3.39	
12938.00	91.750	88.830	7385.31	4466.03	161.50	4466.27	2.57	
13032.00	91.510	88.920	7382.64	4559.97	163.34	4560.21	0.27	
13127.00	89.780	89.150	7381.57	4654.94	164.94	4655.19	1.84	
13219.00	90.000	90.380	7381.75	4746.94	165.32	4747.19	1.36	
13312.00	90.090	90.490	7381.67	4839.94	164.61	4840.19	0.15	
13406.00	89.880	91.940	7381.70	4933.92	162.62	4934.16	1.56	
13499.00	89.660	91.570	7382.07	5026.87	159.77	5027.12	0.46	
13593.00	89.720	90.800	7382.58	5120.86	157.83	5121.10	0.82	



Actual Wellpath Report

BOST FARM 41C-8-L AWP

Page 7 of 10



REFERENCE WELLPATH IDENTIFICATION

Operator	SRC ENERGY	Slot	SLOT#42 BOST FARM 41C-8-L (1397'FNL & 940'FWL, SEC.07)
Area	COLORADO	Well	BOST FARM 41C-8-L
Field	WELD COUNTY (NAD83,TRUE NORTH)	Wellbore	BOST FARM 41C-8-L AWB
Facility	SEC.07-T05N-R66W		

WELLPATH DATA (194 stations)

MD [ft]	Inclination [°]	Azimuth [°]	TVD [ft]	Vert Sect [ft]	North [ft]	East [ft]	DLS [°/100ft]	Comments
13687.00	89.880	91.310	7382.91	5214.84	156.10	5215.08	0.57	
13780.00	90.220	91.630	7382.83	5307.81	153.71	5308.05	0.50	
13873.00	90.030	91.990	7382.62	5400.77	150.77	5401.00	0.44	
13967.00	90.060	92.000	7382.55	5494.72	147.50	5494.94	0.03	
14061.00	89.880	89.730	7382.60	5588.70	146.08	5588.93	2.42	
14155.00	90.090	88.190	7382.62	5682.68	147.79	5682.91	1.65	
14249.00	90.030	86.980	7382.53	5776.59	151.75	5776.82	1.29	
14342.00	89.940	86.630	7382.55	5869.44	156.93	5869.68	0.39	
14435.00	90.060	87.470	7382.55	5962.31	161.72	5962.55	0.91	
14527.00	89.910	89.320	7382.57	6054.26	164.30	6054.51	2.02	
14620.00	90.220	90.370	7382.47	6147.26	164.55	6147.51	1.18	
14713.00	89.450	90.170	7382.74	6240.26	164.11	6240.51	0.86	
14807.00	89.540	92.430	7383.57	6334.23	161.98	6334.48	2.41	
14900.00	90.920	92.620	7383.19	6427.14	157.88	6427.38	1.50	
14994.00	91.100	92.740	7381.54	6521.03	153.49	6521.27	0.23	
15087.00	89.200	91.620	7381.29	6613.96	149.95	6614.19	2.37	
15179.00	89.100	89.840	7382.66	6705.94	148.78	6706.17	1.94	
15273.00	89.010	86.780	7384.21	6799.87	151.55	6800.11	3.26	
15366.00	89.100	85.990	7385.74	6892.67	157.41	6892.91	0.85	
15458.00	89.200	86.750	7387.11	6984.46	163.23	6984.71	0.83	
15551.00	89.290	87.890	7388.33	7077.34	167.58	7077.60	1.23	
15643.00	89.160	89.060	7389.58	7169.30	170.03	7169.56	1.28	
15736.00	89.200	90.820	7390.91	7262.28	170.13	7262.54	1.89	
15828.00	89.290	91.320	7392.12	7354.26	168.41	7354.52	0.55	
15921.00	89.200	91.380	7393.34	7447.23	166.22	7447.49	0.12	
16015.00	90.580	89.560	7393.52	7541.22	165.45	7541.48	2.43	
16109.00	90.550	86.690	7392.60	7635.15	168.52	7635.41	3.05	
16202.00	90.610	86.130	7391.66	7727.96	174.35	7728.22	0.61	
16296.00	90.610	87.750	7390.66	7821.81	179.36	7822.08	1.72	
16389.00	90.520	88.600	7389.74	7914.75	182.33	7915.03	0.92	



Actual Wellpath Report

BOST FARM 41C-8-L AWP

Page 8 of 10



REFERENCE WELLPATH IDENTIFICATION

Operator	SRC ENERGY	Slot	SLOT#42 BOST FARM 41C-8-L (1397'FNL & 940'FWL, SEC.07)
Area	COLORADO	Well	BOST FARM 41C-8-L
Field	WELD COUNTY (NAD83,TRUE NORTH)	Wellbore	BOST FARM 41C-8-L AWB
Facility	SEC.07-T05N-R66W		

WELLPATH DATA (194 stations)

MD [ft]	Inclination [°]	Azimuth [°]	TVD [ft]	Vert Sect [ft]	North [ft]	East [ft]	DLS [°/100ft]	Comments
16483.00	90.550	89.960	7388.86	8008.73	183.51	8009.02	1.45	
16576.00	90.580	90.380	7387.94	8101.73	183.23	8102.01	0.45	
16668.00	90.580	89.750	7387.01	8193.72	183.13	8194.01	0.68	
16761.00	90.610	88.390	7386.05	8286.70	184.64	8286.99	1.46	
16854.00	90.610	88.950	7385.06	8379.67	186.79	8379.96	0.60	
16947.00	89.630	91.980	7384.86	8472.65	186.04	8472.94	3.42	
17042.00	89.690	93.740	7385.43	8567.54	181.30	8567.82	1.85	
17136.00	89.500	92.740	7386.09	8661.39	175.99	8661.66	1.08	
17230.00	89.810	91.160	7386.66	8755.34	172.79	8755.60	1.71	
17322.00	89.810	90.680	7386.96	8847.33	171.31	8847.59	0.52	
17415.00	89.930	89.280	7387.17	8940.32	171.34	8940.59	1.51	
17600.00	89.530	89.250	7388.04	9125.30	173.72	9125.57	0.22	LAST BHI SURVEY (1181'FNL & 416'FEL, SEC.08)
17694.00	89.660	89.440	7388.71	9219.29	174.79	9219.56	0.24	PROJ TO BIT (1180'FNL & 322'FEL, SEC.08)
17718.00	89.660	89.440	7388.85	9243.29	175.03	9243.56	0.00	

HOLE & CASING SECTIONS - Ref Wellbore: BOST FARM 41C-8-L AWB Ref Wellpath: BOST FARM 41C-8-L AWP

String/Diameter	Start MD [ft]	End MD [ft]	Interval [ft]	Start TVD [ft]	End TVD [ft]	Start N/S [ft]	Start E/W [ft]	End N/S [ft]	End E/W [ft]
13.5in Open Hole	20.00	1791.00	1771.00	20.00	1760.78	0.00	0.00	30.77	-279.02
9.625in Casing Surface	20.00	1791.00	1771.00	20.00	1760.78	0.00	0.00	30.77	-279.02
8.5in Open Hole	1791.00	17694.00	15903.00	1760.78	7388.71	30.77	-279.02	174.79	9219.56



Actual Wellpath Report

BOST FARM 41C-8-L AWP

Page 9 of 10



REFERENCE WELLPATH IDENTIFICATION

Operator	SRC ENERGY	Slot	SLOT#42 BOST FARM 41C-8-L (1397'FNL & 940'FWL, SEC.07)
Area	COLORADO	Well	BOST FARM 41C-8-L
Field	WELD COUNTY (NAD83,TRUE NORTH)	Wellbore	BOST FARM 41C-8-L AWB
Facility	SEC.07-T05N-R66W		

TARGETS

Name	TVD [ft]	North [ft]	East [ft]	Grid East [US ft]	Grid North [US ft]	Latitude	Longitude	Shape
SEC.07-T05N-R66W	25.00	-1408.47	324.18	3187161.59	1394309.79	40°24'49.806"N	104°49'40.249"W	polygon
SEC.08-T05N-R66W	25.00	-1408.47	324.18	3187161.59	1394309.79	40°24'49.806"N	104°49'40.249"W	polygon
BOST FARM 41C-8-L TOP OF PROD REV-1 (1241'FNL & 150'FWL, SEC.07)	7173.53	170.43	-791.32	3186034.23	1395880.14	40°25'05.408"N	104°49'54.671"W	point
BOST FARM 41C-8-L TOP OF PROD ON PLAT (1241'FNL & 150'FWL, SEC.07)	7183.00	170.43	-791.32	3186034.23	1395880.14	40°25'05.408"N	104°49'54.671"W	point
BOST FARM 1N-8C-L HARDLINE BOX	7286.00	60.11	0.31	3186826.63	1395775.82	40°25'04.318"N	104°49'44.436"W	polygon
BOST FARM 41C-8-L BHL ON PLAT (1199'FNL & 460'FEL, SEC.08)	7385.00	155.77	9169.02	3195993.98	1395940.84	40°25'05.246"N	104°47'45.895"W	point
BOST FARM 41C-8-L BHL REV-1 (1199'FNL & 460'FEL, SEC.08)	7395.90	155.77	9169.02	3195993.98	1395940.84	40°25'05.246"N	104°47'45.895"W	point

WELLPATH COMPOSITION - Ref Wellbore: BOST FARM 41C-8-L AWB Ref Wellpath: BOST FARM 41C-8-L AWP

Start MD [ft]	End MD [ft]	Positional Uncertainty Model	Log Name/Comment	Wellbore
20.00	1781.00	BHI NaviTrak (Standard)	13 1/2" SURFACE SECTION <121-1765>	BOST FARM 41C-8-L AWB
1781.00	17694.00	BHI AutoTrak Curve (MagCAD+IFR1, Short spacing)	8 1/2" MONOBORE SURVEYS <1853-17694>	BOST FARM 41C-8-L AWB
17694.00	17718.00	Blind Drilling (std)	Projection to bit	BOST FARM 41C-8-L AWB



Actual Wellpath Report

BOST FARM 41C-8-L AWP

Page 10 of 10



REFERENCE WELLPATH IDENTIFICATION

Operator	SRC ENERGY	Slot	SLOT#42 BOST FARM 41C-8-L (1397'FNL & 940'FWL, SEC.07)
Area	COLORADO	Well	BOST FARM 41C-8-L
Field	WELD COUNTY (NAD83,TRUE NORTH)	Wellbore	BOST FARM 41C-8-L AWB
Facility	SEC.07-T05N-R66W		

WELLPATH COMMENTS

MD [ft]	Inclination [°]	Azimuth [°]	TVD [ft]	Comment
7680.00	86.767	90.659	7169.29	LANDING (1233'FNL & 161'FWL, SEC.07)
17600.00	89.530	89.250	7388.04	LAST BHI SURVEY (1181'FNL & 416'FEL, SEC.08)
17694.00	89.660	89.440	7388.71	PROJ TO BIT (1180'FNL & 322'FEL, SEC.08)