

HALLIBURTON

iCem[®] Service

SRC ENERGY INC

Bost Farm 41C-8-L Production

Sincerely,
Meghan Jacobs

Legal Notice

Disclaimer:

All information in this report is provided subject to the terms and conditions which govern the services provided by Halliburton. Halliburton personnel use their best efforts in gathering information and their best judgment in interpreting it, but any interpretation, research, analysis or recommendation furnished by Halliburton are opinions based upon inferences from measurements and empirical relationships and assumptions, which inferences and empirical relationships and assumptions are not infallible, and with respect to which professionals in the industry may differ. iCem 3D Displacement results are used to understand how fluids intermix during a cement job. Simulation and 3D displacement results are not intended as and should not be used as a replacement for bond logs in determining top of cement. Current 3D model calculations are known to model more volume than the input volume for standard cases due to known calculation improvements required. For rotational cases, the modeled volume will be impacted by the same calculations impacting the standard cases, as well as additional constraints imposed to make the calculation time required operationally feasible. Therefore, until further notice, 3D displacement results should not be used for replacement of a bond log, or used as an identifier of top of cement. HALLIBURTON IS UNABLE TO GUARANTEE THE ACCURACY OF ANY CHART INTERPRETATION, RESEARCH ANALYSIS, OR JOB RECOMMENDATION and any interpretation or recommendation is not for use of or reliance upon by any third party. The customer has full responsibility for any of its decisions which are based on the information provided in this report.

Table of Contents

1.0 Cementing Job Summary 4

 1.1 Executive Summary4

2.0 Real-Time Job Summary 7

 2.1 Job Event Log7

3.0 Attachments..... 9

 3.1 Bost Farm 41C-8-L Production – Job Chart with Events9

 3.2 Bost Farm 41C-8-L Production – Job Chart without Events.....10

1.0 Cementing Job Summary

1.1 Executive Summary

Halliburton appreciates the opportunity to perform the cementing services on the **Bost Farm 41C-8-L cement Production** casing job. A pre-job safety meeting was held before the job where details of the job were discussed, potential safety hazards were reviewed, and environmental compliance procedures were outlined.

Approximately 50 bbls of cement were returned to surface.

Halliburton maintains a continuous quality improvement process and appreciates any comments or suggestions that you may have. Halliburton again thanks you for the opportunity to perform service work on this well. We hope to be your solutions provider for future projects.

Respectfully,

Halliburton Fort Lupton

HALLIBURTON

Cementing Job Summary

The Road to Excellence Starts with Safety

Sold To #: 359915	Ship To #: 3902144	Quote #: 0022519419	Sales Order #: 0905311696							
Customer: SRC ENERGY INC-EBUS		Customer Rep: Buddy Davis								
Well Name: BOST FARM	Well #: 41C-8-L	API/UWI #: 05-123-47702-00								
Field: WATTENBERG	City (SAP): GREELEY	County/Parish: WELD	State: COLORADO							
Legal Description: SW NW-7-5N-66W-1397FNL-941FWL										
Contractor: PRECISION DRLG		Rig/Platform Name/Num: PRECISION 462								
Job BOM: 7523 7523										
Well Type: HORIZONTAL OIL										
Sales Person: HALAMERICA\HB41307		Srv Supervisor: Kendall Broom - H194727								
Job										
Formation Name										
Formation Depth (MD)	Top	Bottom								
Form Type	BHST									
Job depth MD	17718ft	Job Depth TVD								
Water Depth		Wk Ht Above Floor								
Perforation Depth (MD)	From	To								
Well Data										
Description	New / Used	Size in	ID in	Weight lbm/ft	Thread	Grade	Top MD ft	Bottom MD ft	Top TVD ft	Bottom TVD ft
Casing		9.625	8.921	36	LTC	J-55	0	1844	0	1800
Casing		5.5	4.778	20	TXP-BTC	P110IC	0	17706	0	7396
Open Hole Section			8.5				1831	17718	1800	7396
Tools and Accessories										
Type	Size in	Qty	Make	Depth ft	Type	Size in	Qty	Make		
Guide Shoe	5.5				Top Plug	5.5		HES		
Float Shoe	5.5			17706	Bottom Plug	5.5		HES		
Float Collar	5.5				SSR plug set	5.5		HES		
Insert Float	5.5				Plug Container	5.5	1	HES		
Stage Tool	5.5				Centralizers	5.5		HES		
Fluid Data										
Stage/Plug #: 1										
Fluid #	Stage Type	Fluid Name	Qty	Qty UoM	Mixing Density lbm/gal	Yield ft3/sack	Mix Fluid Gal	Rate bbl/min	Total Mix Fluid Gal	
1	Tuned Spacer III	Tuned Spacer III	40	bbl	11.5	3.84				
Fluid #	Stage Type	Fluid Name	Qty	Qty UoM	Mixing Density lbm/gal	Yield ft3/sack	Mix Fluid Gal	Rate bbl/min	Total Mix Fluid Gal	
2	ElastiCem Cap	ELASTICEM (TM) SYSTEM	414	sack	13.2	1.57		6	7.52	

last updated on 12/3/2018 2:10:02 PM

Page 1 of 3

HALLIBURTON

Cementing Job Summary

Fluid #	Stage Type	Fluid Name	Qty	Qty UoM	Mixing Density lbm/gal	Yield ft3/sack	Mix Fluid Gal	Rate bbl/min	Total Mix Fluid Gal
3	LockCem	SBM LOCKCEM CEMENT BBL	353	sack	13.3	1.59		6	7.61
Fluid #	Stage Type	Fluid Name	Qty	Qty UoM	Mixing Density lbm/gal	Yield ft3/sack	Mix Fluid Gal	Rate bbl/min	Total Mix Fluid Gal
4	ElastiCem Cap	ELASTICEM (TM) SYSTEM	422	sack	13.2	1.57		6	7.52
Fluid #	Stage Type	Fluid Name	Qty	Qty UoM	Mixing Density lbm/gal	Yield ft3/sack	Mix Fluid Gal	Rate bbl/min	Total Mix Fluid Gal
5	NeoCem	NeoCem TM	1144	sack	13.2	2.06		6	9.83
Fluid #	Stage Type	Fluid Name	Qty	Qty UoM	Mixing Density lbm/gal	Yield ft3/sack	Mix Fluid Gal	Rate bbl/min	Total Mix Fluid Gal
6	MMCR Displacement	MMCR Displacement	20	bbl	8.34				
0.20 gal/bbl		MICRO MATRIX CEMENT RETARDER, 5 GAL PAIL (100003781)							
Fluid #	Stage Type	Fluid Name	Qty	Qty UoM	Mixing Density lbm/gal	Yield ft3/sack	Mix Fluid Gal	Rate bbl/min	Total Mix Fluid Gal
7	Water	Water		bbl	8.33				
1 gal/Mgal		CLA-WEB - BULK (101985043)							
Fluid #	Stage Type	Fluid Name	Qty	Qty UoM	Mixing Density lbm/gal	Yield ft3/sack	Mix Fluid Gal	Rate bbl/min	Total Mix Fluid Gal
8	MMCR Displacement	MMCR Displacement	70	bbl	8.34				
0.20 gal/bbl		MICRO MATRIX CEMENT RETARDER, 5 GAL PAIL (100003781)							
Cement Left In Pipe		Amount	40 ft		Reason			Shoe Joint	
Mix Water:		pH 7	Mix Water Chloride:0 ppm			Mix Water Temperature:		50 °F °C	
Plug Bumped?		Yes				Floats Held?		Yes	
Cement Returns:		50							
Comment Got 50 bbls cement back. Burst shoe at 5004 psi Pumped 6 bbl wet shoe. Floats hld 3.5 bbls back on the truck									

2.0 Real-Time Job Summary

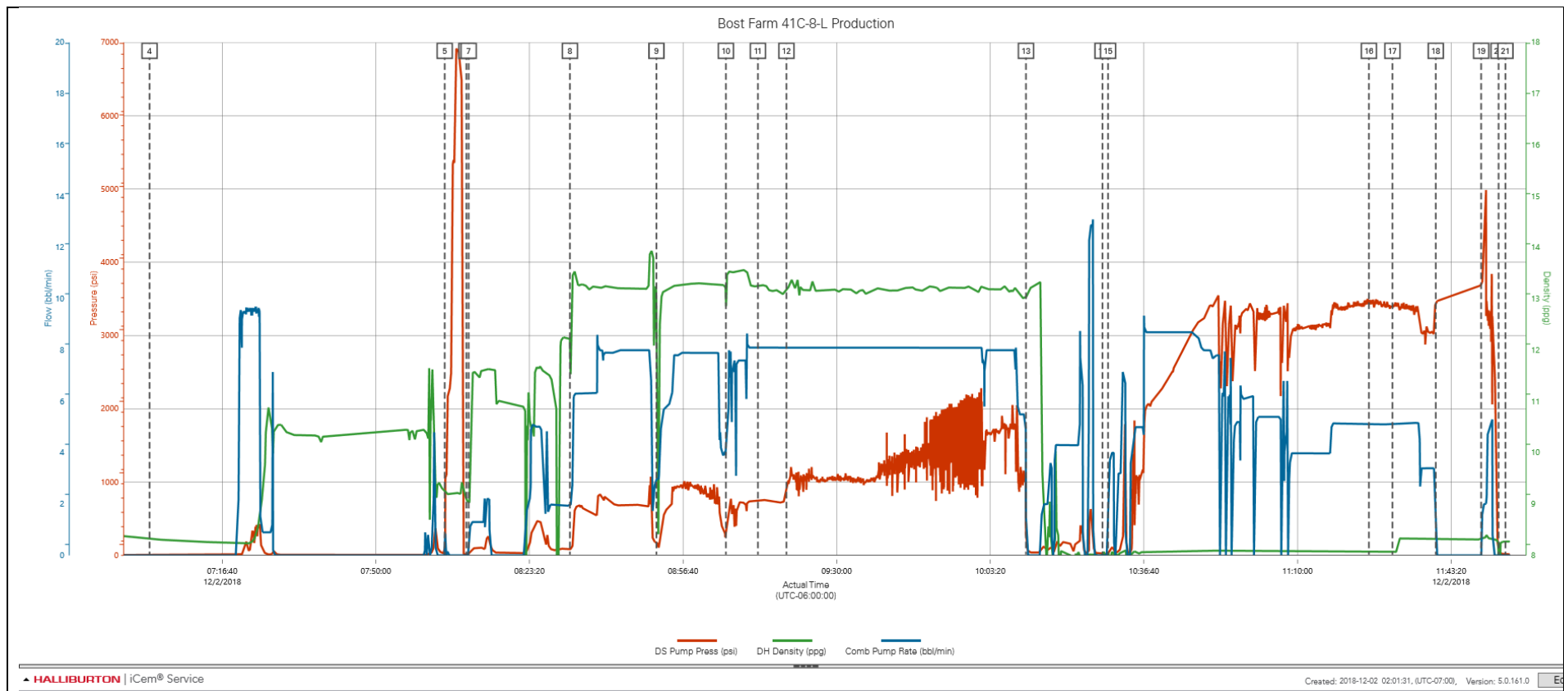
2.1 Job Event Log

Type	Seq. No.	Activity	Graph Label	Date	Time	Source	Pumping Pressure (1) (psi)	Slurry Density (1) (ppg)	Combined Slurry Rate (1) (bbl/min)	Comments
Event	1	Call Out	Call Out	12/1/2018	16:05:56	USER				Crew called out for OL time of 2300.
Event	2	Arrive At Loc	Arrive At Loc	12/1/2018	23:00:41	USER				
Event	3	Pre-Job Safety Meeting	Pre-Job Safety Meeting	12/2/2018	06:00:25	USER				Discussed JSA and job procedure.
Event	4	Start Job	Start Job	12/2/2018	07:00:53	COM4				
Event	5	Pressure Test	Pressure Test	12/2/2018	08:04:57	USER				Pressure test lines with fresh water; 500psi eKo test and high pressure test at 6500psi.
Event	6	Drop Bottom Plug	Drop Bottom Plug	12/2/2018	08:09:38	USER				Witnessed by Halliburton rep and customer.
Event	7	Pump Spacer 1	Pump Spacer	12/2/2018	08:10:08	COM4				Pump 40bbls of TSIII at 11.5ppg
Stage	2	Next Stage	SRC TSIII Spacer 2511221	12/2/2018	08:10:52	USER				
Event	8	Pump Cap Cement	Pump Cap Cement	12/2/2018	08:32:07	COM4				Pump 414sks (115bbls) of 13.2ppg, 1.57cuft/sk, and 7.52gal/sk ElastiCem cap cement.
Stage	3	Next Stage	SRC Cap for LockCem 2497825/11	12/2/2018	08:32:14	USER				
Stage	4	Next Stage	SRC LockCem 2497825/10	12/2/2018	08:50:46	USER				
Event	9	Pump Cement	Pump Lead Cement	12/2/2018	08:50:53	COM4				Pump 353sks (100bbls) of 13.3ppg, 1.59cuft/sk, and 7.61gal/sk LockCem lead cement.
Event	10	Pump Cap Cement	Pump Cap Cement	12/2/2018	09:05:58	COM4				Pump 422sks (118bbls) of 13.2ppg, 1.7cuft/sk, and 7.52gal/sk ElastiCem cap cement.
Stage	5	Next Stage	SRC Cap for LockCem 2497825/11	12/2/2018	09:06:03	USER				
Event	11	Check Weight	Check Weight	12/2/2018	09:12:54	COM4				

Event	12	Pump Tail Cement	Pump Tail Cement	12/2/2018	09:19:06	COM4	Pump 1144sks (429bbls) of 13.2ppg, 2.06cuft/sk, and 9.83gal/sk NeoCem tail cement.
Stage	6	Next Stage	13.2 Thick NeoCem 2505308/6	12/2/2018	09:19:15	USER	
Event	13	Shutdown	Shutdown	12/2/2018	10:11:05	COM4	Wash pumps and lines.
Event	14	Drop Top Plug	Drop Top Plug	12/2/2018	10:27:41	COM4	Witnessed by Halliburton rep and customer.
Stage	7	Next Stage	Water	12/2/2018	10:28:00	USER	
Event	15	Pump Displacement	Pump Displacement	12/2/2018	10:28:53	COM4	Pump 383bbls of fresh water displacement. MMCR in first 20bbls and last 70bbls, with Clay-web throughout.
Event	16	Spacer Returns to Surface	Spacer Returns to Surface	12/2/2018	11:25:30	USER	315bbls into displacement, spacer to surface.
Event	17	Cement Returns to Surface	Cement Returns to Surface	12/2/2018	11:30:36	USER	343bbls into displacement, cement returns to surface. Total of 40bbls returned to surface.
Event	18	Bump Plug	Bump Plug	12/2/2018	11:40:00	COM4	Final circulating pressure of 3120psi; bumped plug at 3490psi. Hold pressure for 10 min casing test.
Event	19	Other	Pump Wet Shoe	12/2/2018	11:49:51	USER	Shift wet shoe sub at 5150psi and pump 6bbl wet shoe.
Event	20	Check Floats	Check Floats	12/2/2018	11:53:38	USER	Floats held, 3bbls back to the truck.
Event	21	End Job	End Job	12/2/2018	11:55:07	USER	Thank you for choosing Halliburton - Kendall Broom and crew.

3.0 Attachments

3.1 Bost Farm 41C-8-L Production – Job Chart with Events



3.2 Bost Farm 41C-8-L Production – Job Chart without Events

