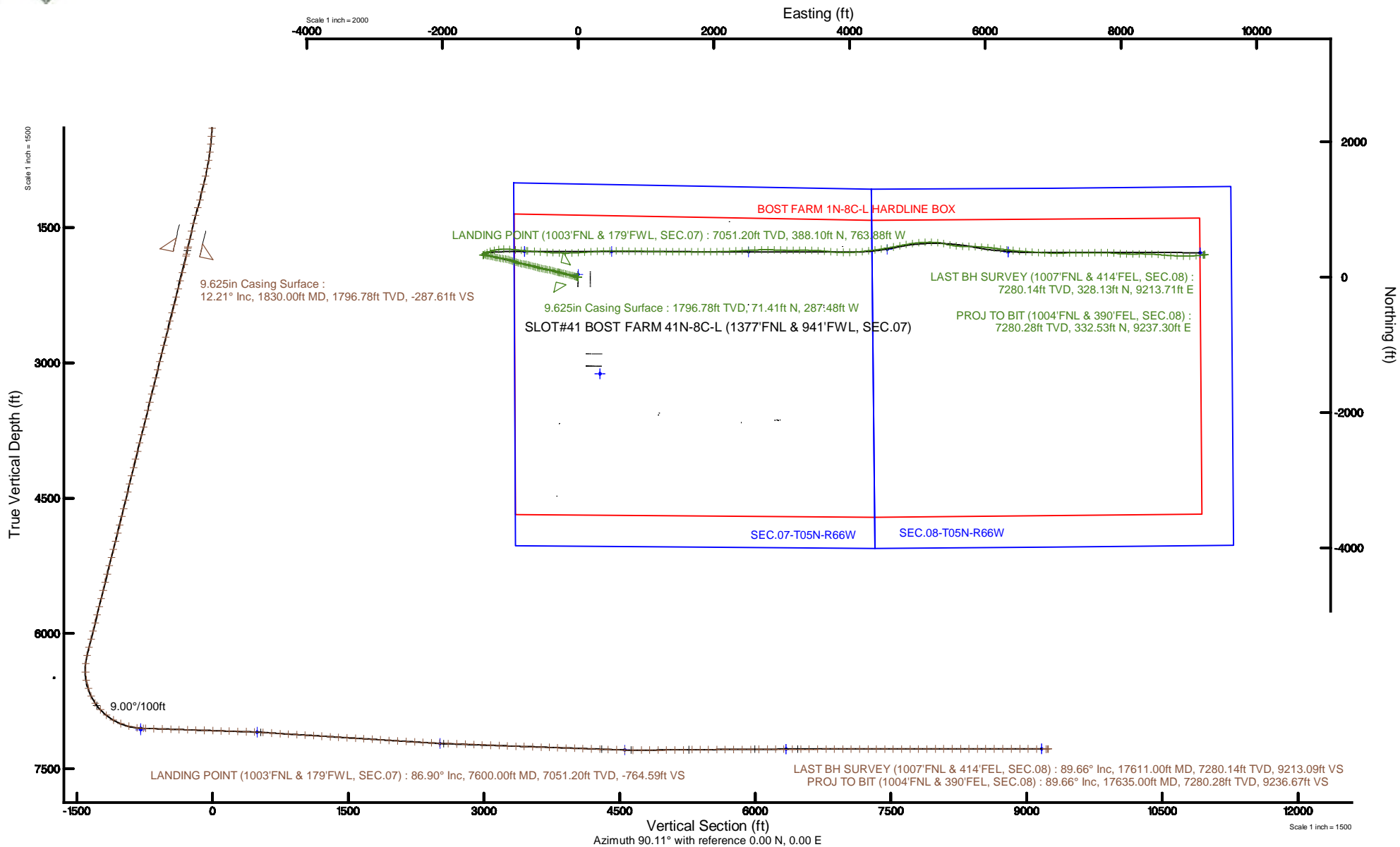


# SRC ENERGY

Location: COLORADO Slot: SLOT#41 BOST FARM 41N-8C-L (1377'FNL & 941'FWL, SEC.07)  
 Field: WELD COUNTY (NAD83,TRUE NORTH) Well: BOST FARM 41N-8C-L  
 Facility: SEC.07-T05N-R66W Wellbore: BOST FARM 41N-8C-L PWB

Plot reference wellpath is BOST FARM 41N-8C-L (REV-B.0) PWP	Grid System: NAD83 / Lambert Colorado SP, Northern Zone (501), US feet
True vertical depths are referenced to PRECISION 462 (20') (RKB)	North Reference: True north
Measured depths are referenced to PRECISION 462 (20') (RKB)	Scale: True distance
PRECISION 462 (20') (RKB) to Mean Sea Level: 4901 feet	Depths are in feet
Mean Sea Level to Mud line (At Slot: SLOT#41 BOST FARM 41N-8C-L (1377'FNL & 941'FWL, SEC.07)): 0 feet	Created by: hanisab on 2019-02-04
Coordinates are in feet referenced to Slot	Database: WellArchitectDB





# Actual Wellpath Report

BOST FARM 41N-8C-L AWP

Page 1 of 11



## REFERENCE WELLPATH IDENTIFICATION

Operator	SRC ENERGY	Slot	SLOT#41 BOST FARM 41N-8C-L (1377'FNL & 941'FWL, SEC.07)
Area	COLORADO	Well	BOST FARM 41N-8C-L
Field	WELD COUNTY (NAD83,TRUE NORTH)	Wellbore	BOST FARM 41N-8C-L AWB
Facility	SEC.07-T05N-R66W		

## REPORT SETUP INFORMATION

Projection System	NAD83 / Lambert Colorado SP, Northern Zone (501), US feet	Software System	WellArchitect® 5.1
North Reference	True	User	Hanisab
Scale	0.999961	Report Generated	2/4/2019 at 10:26:03 PM
Convergence at slot	0.43° East	Database/Source file	WellArchitectDB/BOST_FARM_41N-8C-L_AWP.xml

## WELLPATH LOCATION

	Local coordinates		Grid coordinates		Geographic coordinates	
	North[ft]	East[ft]	Easting[US ft]	Northing[US ft]	Latitude	Longitude
Slot Location	1428.51	-324.16	3186826.63	1395735.75	40°25'03.922"N	104°49'44.440"W
Facility Reference Pt			3187161.59	1394309.79	40°24'49.806"N	104°49'40.249"W
Field Reference Pt			3171284.48	1426358.81	40°30'07.643"N	104°53'02.634"W

## WELLPATH DATUM

Calculation method	Minimum curvature	PRECISION 462 (20') (RKB) to Facility Vertical Datum	4901.00ft
Horizontal Reference Pt	Slot	PRECISION 462 (20') (RKB) to Mean Sea Level	4901.00ft
Vertical Reference Pt	PRECISION 462 (20') (RKB)	PRECISION 462 (20') (RKB) to Mud Line at Slot (SLOT#41 BOST FARM 41N-8C-L (1377'FNL & 941'FWL, SEC.07))	4901.00ft
MD Reference Pt	PRECISION 462 (20') (RKB)	Section Origin	N 0.00, E 0.00 ft
Field Vertical Reference	Mean Sea Level	Section Azimuth	90.11°



# Actual Wellpath Report

BOST FARM 41N-8C-L AWP

Page 2 of 11



## REFERENCE WELLPATH IDENTIFICATION

Operator	SRC ENERGY	Slot	SLOT#41 BOST FARM 41N-8C-L (1377'FNL & 941'FWL, SEC.07)
Area	COLORADO	Well	BOST FARM 41N-8C-L
Field	WELD COUNTY (NAD83,TRUE NORTH)	Wellbore	BOST FARM 41N-8C-L AWB
Facility	SEC.07-T05N-R66W		

## WELLPATH DATA (194 stations) † = interpolated/extrapolated station

MD [ft]	Inclination [°]	Azimuth [°]	TVD [ft]	Vert Sect [ft]	North [ft]	East [ft]	DLS [°/100ft]	Comments
0.00†	0.000	156.340	0.00	0.00	0.00	0.00	0.00	
20.00	0.000	156.340	20.00	0.00	0.00	0.00	0.00	
137.00	0.690	156.340	137.00	0.28	-0.65	0.28	0.59	
226.00	0.530	128.460	225.99	0.82	-1.39	0.82	0.37	
309.00	1.150	246.500	308.99	0.36	-1.96	0.36	1.78	
399.00	3.960	266.920	398.89	-3.57	-2.49	-3.58	3.23	
489.00	5.200	281.620	488.60	-10.67	-1.84	-10.67	1.89	
579.00	6.390	295.830	578.15	-19.18	1.17	-19.18	2.06	
669.00	7.380	291.960	667.50	-29.06	5.51	-29.05	1.21	
759.00	10.500	287.310	756.39	-42.26	10.11	-42.24	3.56	
849.00	11.080	284.000	844.80	-58.49	14.65	-58.46	0.94	
939.00	12.460	284.520	932.91	-76.29	19.17	-76.25	1.54	
1029.00	14.430	282.640	1020.44	-96.64	24.06	-96.60	2.24	
1119.00	14.020	282.840	1107.68	-118.22	28.94	-118.17	0.46	
1209.00	14.100	282.980	1194.98	-139.54	33.82	-139.48	0.10	
1299.00	16.540	285.590	1281.78	-162.58	39.73	-162.50	2.82	
1389.00	15.280	285.640	1368.33	-186.35	46.37	-186.26	1.40	
1479.00	14.330	284.330	1455.34	-208.57	52.32	-208.48	1.12	
1569.00	13.870	284.410	1542.63	-229.82	57.77	-229.72	0.51	
1659.00	13.220	282.930	1630.13	-250.31	62.75	-250.19	0.82	
1749.00	13.000	283.250	1717.78	-270.20	67.38	-270.08	0.26	
1762.00	13.140	282.580	1730.44	-273.07	68.03	-272.94	1.59	
1851.00	11.930	284.020	1817.32	-291.88	72.46	-291.74	1.40	
1945.00	14.190	284.680	1908.88	-312.46	77.74	-312.32	2.41	
2038.00	14.270	287.610	1999.03	-334.42	84.10	-334.27	0.78	
2131.00	14.610	286.980	2089.09	-356.58	90.99	-356.41	0.40	
2224.00	14.500	285.440	2179.11	-379.03	97.51	-378.85	0.43	
2317.00	14.560	282.450	2269.13	-401.68	103.13	-401.49	0.81	
2409.00	14.370	279.860	2358.22	-424.23	107.58	-424.03	0.73	
2501.00	14.570	279.060	2447.30	-446.91	111.36	-446.70	0.31	



# Actual Wellpath Report

## BOST FARM 41N-8C-L AWP

Page 3 of 11



### REFERENCE WELLPATH IDENTIFICATION

Operator	SRC ENERGY	Slot	SLOT#41 BOST FARM 41N-8C-L (1377'FNL & 941'FWL, SEC.07)
Area	COLORADO	Well	BOST FARM 41N-8C-L
Field	WELD COUNTY (NAD83,TRUE NORTH)	Wellbore	BOST FARM 41N-8C-L AWB
Facility	SEC.07-T05N-R66W		

### WELLPATH DATA (194 stations)

MD [ft]	Inclination [°]	Azimuth [°]	TVD [ft]	Vert Sect [ft]	North [ft]	East [ft]	DLS [°/100ft]	Comments
2595.00	14.570	278.020	2538.28	-470.30	114.87	-470.09	0.28	
2688.00	14.530	279.590	2628.30	-493.39	118.45	-493.17	0.43	
2781.00	14.530	280.210	2718.32	-516.39	122.46	-516.16	0.17	
2873.00	14.270	281.640	2807.43	-538.86	126.79	-538.62	0.48	
2965.00	14.410	285.550	2896.57	-561.00	132.15	-560.76	1.06	
3060.00	14.380	286.490	2988.58	-583.71	138.66	-583.46	0.25	
3153.00	14.220	286.980	3078.70	-605.72	145.28	-605.46	0.22	
3245.00	14.300	286.780	3167.87	-627.42	151.86	-627.14	0.10	
3337.00	14.360	285.380	3257.01	-649.31	158.16	-649.02	0.38	
3431.00	14.350	282.630	3348.07	-671.93	163.80	-671.62	0.73	
3523.00	14.130	280.990	3437.25	-694.08	168.44	-693.77	0.50	
3617.00	13.770	284.130	3528.47	-716.21	173.36	-715.89	0.89	
3711.00	14.290	285.090	3619.67	-738.27	179.11	-737.94	0.61	
3804.00	14.390	283.950	3709.77	-760.57	184.88	-760.23	0.32	
3896.00	14.340	280.510	3798.90	-782.88	189.71	-782.53	0.93	
3989.00	14.350	278.660	3889.00	-805.60	193.55	-805.25	0.49	
4083.00	14.240	277.870	3980.09	-828.58	196.89	-828.22	0.24	
4175.00	14.210	281.530	4069.27	-850.86	200.69	-850.49	0.98	
4269.00	14.200	286.380	4160.40	-873.24	206.25	-872.86	1.27	
4362.00	14.220	288.520	4250.55	-895.02	213.10	-894.63	0.57	
4456.00	14.170	291.070	4341.68	-916.72	220.90	-916.31	0.67	
4550.00	14.290	289.320	4432.80	-938.42	228.88	-938.00	0.48	
4644.00	14.110	288.320	4523.93	-960.26	236.31	-959.82	0.32	
4738.00	14.130	289.640	4615.09	-981.96	243.77	-981.51	0.34	
4830.00	14.270	290.450	4704.28	-1003.17	251.51	-1002.71	0.26	
4926.00	14.430	285.770	4797.29	-1025.78	258.89	-1025.31	1.22	
5018.00	14.540	280.810	4886.36	-1048.17	264.18	-1047.68	1.35	
5112.00	14.330	277.280	4977.40	-1071.31	267.86	-1070.81	0.96	
5205.00	14.400	277.870	5067.49	-1094.18	270.90	-1093.68	0.17	
5299.00	14.260	279.640	5158.57	-1117.18	274.44	-1116.68	0.49	



# Actual Wellpath Report

BOST FARM 41N-8C-L AWP

Page 4 of 11



## REFERENCE WELLPATH IDENTIFICATION

Operator	SRC ENERGY	Slot	SLOT#41 BOST FARM 41N-8C-L (1377'FNL & 941'FWL, SEC.07)
Area	COLORADO	Well	BOST FARM 41N-8C-L
Field	WELD COUNTY (NAD83,TRUE NORTH)	Wellbore	BOST FARM 41N-8C-L AWB
Facility	SEC.07-T05N-R66W		

## WELLPATH DATA (194 stations) † = interpolated/extrapolated station

MD [ft]	Inclination [°]	Azimuth [°]	TVD [ft]	Vert Sect [ft]	North [ft]	East [ft]	DLS [°/100ft]	Comments
5393.00	14.410	279.090	5249.64	-1140.15	278.23	-1139.64	0.22	
5488.00	14.360	279.380	5341.66	-1163.45	282.02	-1162.93	0.09	
5581.00	14.400	280.300	5431.75	-1186.22	285.96	-1185.69	0.25	
5674.00	14.300	282.530	5521.85	-1208.82	290.52	-1208.28	0.60	
5766.00	14.280	286.010	5611.00	-1230.82	296.12	-1230.28	0.93	
5859.00	14.140	283.470	5701.16	-1252.91	301.93	-1252.35	0.69	
5952.00	14.100	282.900	5791.35	-1275.01	307.10	-1274.44	0.16	
6044.00	14.140	280.980	5880.57	-1296.97	311.75	-1296.39	0.51	
6137.00	14.040	278.130	5970.77	-1319.30	315.50	-1318.71	0.75	
6231.00	14.020	278.650	6061.97	-1341.85	318.83	-1341.26	0.14	
6324.00	14.360	276.510	6152.13	-1364.45	321.83	-1363.85	0.67	
6417.00	14.020	276.600	6242.29	-1387.10	324.43	-1386.50	0.37	
6510.00	3.920	261.160	6334.05	-1401.47	325.24	-1400.87	11.07	
6602.00	1.450	61.860	6425.99	-1403.55	325.31	-1402.96	5.77	
6694.00	12.120	56.760	6517.21	-1394.43	331.17	-1393.82	11.60	
6788.00	19.540	58.490	6607.59	-1372.77	344.81	-1372.14	7.91	
6880.00	26.890	63.210	6692.09	-1341.07	362.26	-1340.40	8.24	
6974.00	36.130	70.000	6772.16	-1295.98	381.36	-1295.28	10.52	
7067.00	43.590	77.850	6843.55	-1238.78	397.52	-1238.05	9.66	
7159.00	51.630	83.720	6905.55	-1171.81	408.16	-1171.05	9.92	
7252.00	59.250	89.550	6958.30	-1095.46	412.47	-1094.70	9.68	
7344.00	68.550	93.800	6998.74	-1012.99	409.94	-1012.24	10.92	
7437.00	75.190	95.230	7027.67	-924.92	402.97	-924.18	7.29	
7530.00	83.150	95.530	7045.13	-834.04	394.41	-833.31	8.56	
7600.00†	86.896	94.851	7051.20	-764.59	388.10	-763.88	5.44	LANDING POINT (1003'FNL & 179'FWL, SEC.07)
7624.00	88.180	94.620	7052.23	-740.69	386.12	-739.98	5.44	
7718.00	87.970	94.170	7055.39	-647.01	378.92	-646.31	0.53	
7811.00	88.180	93.980	7058.51	-554.29	372.32	-553.60	0.30	
7905.00	88.280	94.240	7061.42	-460.56	365.58	-459.88	0.30	
7998.00	87.940	93.200	7064.48	-367.80	359.55	-367.13	1.18	



# Actual Wellpath Report

BOST FARM 41N-8C-L AWP

Page 5 of 11



## REFERENCE WELLPATH IDENTIFICATION

Operator	SRC ENERGY	Slot	SLOT#41 BOST FARM 41N-8C-L (1377'FNL & 941'FWL, SEC.07)
Area	COLORADO	Well	BOST FARM 41N-8C-L
Field	WELD COUNTY (NAD83,TRUE NORTH)	Wellbore	BOST FARM 41N-8C-L AWB
Facility	SEC.07-T05N-R66W		

## WELLPATH DATA (194 stations)

MD [ft]	Inclination [°]	Azimuth [°]	TVD [ft]	Vert Sect [ft]	North [ft]	East [ft]	DLS [°/100ft]	Comments
8091.00	88.310	91.230	7067.53	-274.91	355.96	-274.26	2.15	
8183.00	88.000	89.880	7070.49	-182.97	355.07	-182.31	1.50	
8277.00	88.210	88.100	7073.60	-89.04	356.72	-88.38	1.91	
8369.00	88.120	86.460	7076.54	2.80	361.09	3.47	1.78	
8461.00	88.150	86.300	7079.54	94.56	366.89	95.23	0.18	
8553.00	88.180	85.780	7082.48	186.28	373.24	186.97	0.57	
8646.00	88.090	86.540	7085.51	279.01	379.47	279.71	0.82	
8740.00	88.060	87.740	7088.67	372.83	384.16	373.54	1.28	
8833.00	87.970	89.310	7091.89	465.73	386.55	466.45	1.69	
8926.00	86.090	90.170	7096.71	558.60	386.97	559.32	2.22	
9020.00	85.960	90.940	7103.22	652.37	386.06	653.08	0.83	
9114.00	86.430	90.810	7109.46	746.15	384.63	746.87	0.52	
9207.00	86.340	90.550	7115.33	838.96	383.53	839.67	0.30	
9300.00	86.710	90.970	7120.96	931.79	382.30	932.50	0.60	
9392.00	86.340	90.860	7126.54	1023.61	380.83	1024.31	0.42	
9485.00	86.270	91.090	7132.53	1116.40	379.25	1117.11	0.26	
9578.00	86.490	91.630	7138.40	1209.20	377.05	1209.90	0.63	
9670.00	86.550	90.780	7143.99	1301.01	375.12	1301.70	0.92	
9763.00	86.490	90.350	7149.63	1393.83	374.20	1394.53	0.47	
9857.00	86.300	90.300	7155.54	1487.65	373.67	1488.34	0.21	
9950.00	86.400	90.080	7161.47	1580.46	373.36	1581.15	0.26	
10043.00	86.460	90.170	7167.26	1673.28	373.16	1673.97	0.12	
10136.00	86.430	89.920	7173.02	1766.10	373.09	1766.79	0.27	
10229.00	86.520	90.100	7178.74	1858.92	373.07	1859.62	0.22	
10324.00	86.490	89.130	7184.53	1953.74	373.71	1954.44	1.02	
10417.00	86.400	88.890	7190.30	2046.54	375.31	2047.24	0.28	
10511.00	86.520	87.240	7196.10	2140.30	378.48	2141.01	1.76	
10605.00	86.370	88.540	7201.93	2234.05	381.93	2234.76	1.39	
10698.00	86.520	87.720	7207.70	2326.81	384.96	2327.53	0.89	
10791.00	86.950	86.130	7213.00	2419.52	389.94	2420.24	1.77	



# Actual Wellpath Report

BOST FARM 41N-8C-L AWP

Page 6 of 11



## REFERENCE WELLPATH IDENTIFICATION

Operator	SRC ENERGY	Slot	SLOT#41 BOST FARM 41N-8C-L (1377'FNL & 941'FWL, SEC.07)
Area	COLORADO	Well	BOST FARM 41N-8C-L
Field	WELD COUNTY (NAD83,TRUE NORTH)	Wellbore	BOST FARM 41N-8C-L AWB
Facility	SEC.07-T05N-R66W		

## WELLPATH DATA (194 stations)

MD [ft]	Inclination [°]	Azimuth [°]	TVD [ft]	Vert Sect [ft]	North [ft]	East [ft]	DLS [°/100ft]	Comments
10884.00	88.000	86.940	7217.09	2512.24	395.56	2512.98	1.43	
10979.00	88.060	87.620	7220.36	2607.07	400.06	2607.82	0.72	
11073.00	88.000	88.640	7223.59	2700.96	403.13	2701.71	1.09	
11167.00	87.630	90.370	7227.17	2794.88	403.94	2795.63	1.88	
11260.00	87.570	91.940	7231.07	2887.78	402.07	2888.53	1.69	
11353.00	87.780	92.390	7234.84	2980.65	398.56	2981.39	0.53	
11447.00	87.510	92.560	7238.70	3074.49	394.50	3075.22	0.34	
11540.00	87.570	88.920	7242.70	3167.38	393.30	3168.11	3.91	
11634.00	88.060	88.080	7246.28	3261.27	395.76	3262.01	1.03	
11726.00	87.880	91.220	7249.54	3353.20	396.32	3353.94	3.42	
11819.00	87.970	91.090	7252.91	3446.12	394.45	3446.86	0.17	
11912.00	87.810	93.420	7256.33	3538.99	390.79	3539.72	2.51	
12005.00	88.030	96.390	7259.71	3631.59	382.85	3632.31	3.20	
12097.00	88.090	94.590	7262.82	3723.13	374.05	3723.83	1.96	
12190.00	87.940	92.580	7266.05	3815.90	368.24	3816.58	2.17	
12283.00	88.030	91.000	7269.32	3908.80	365.34	3909.48	1.70	
12376.00	87.970	88.530	7272.56	4001.73	365.72	4002.41	2.66	
12468.00	88.060	86.300	7275.75	4093.57	369.86	4094.26	2.42	
12563.00	88.060	83.880	7278.97	4188.14	377.99	4188.85	2.55	
12657.00	88.000	82.560	7282.20	4281.41	389.08	4282.14	1.40	
12749.00	88.000	82.140	7285.41	4372.51	401.32	4373.26	0.46	
12843.00	88.030	81.070	7288.66	4465.42	415.04	4466.20	1.14	
12936.00	87.880	80.590	7291.98	4557.15	429.85	4557.95	0.54	
13029.00	90.400	80.090	7293.38	4648.78	445.45	4649.61	2.76	
13124.00	90.340	78.850	7292.76	4742.14	462.81	4743.01	1.31	
13217.00	90.280	79.090	7292.26	4833.39	480.60	4834.29	0.27	
13310.00	90.400	81.640	7291.71	4925.04	496.17	4925.97	2.74	
13403.00	90.580	84.470	7290.91	5017.33	507.41	5018.27	3.05	
13497.00	90.460	87.530	7290.06	5111.07	513.97	5112.03	3.26	
13590.00	90.520	90.660	7289.27	5204.04	515.43	5205.00	3.37	





# Actual Wellpath Report

BOST FARM 41N-8C-L AWP

Page 7 of 11



## REFERENCE WELLPATH IDENTIFICATION

Operator	SRC ENERGY	Slot	SLOT#41 BOST FARM 41N-8C-L (1377'FNL & 941'FWL, SEC.07)
Area	COLORADO	Well	BOST FARM 41N-8C-L
Field	WELD COUNTY (NAD83,TRUE NORTH)	Wellbore	BOST FARM 41N-8C-L AWB
Facility	SEC.07-T05N-R66W		

## WELLPATH DATA (194 stations)

MD [ft]	Inclination [°]	Azimuth [°]	TVD [ft]	Vert Sect [ft]	North [ft]	East [ft]	DLS [°/100ft]	Comments
13685.00	90.740	96.330	7288.22	5298.83	509.65	5299.78	5.97	
13777.00	90.400	102.700	7287.30	5389.54	494.45	5390.46	6.93	
13871.00	90.400	101.040	7286.65	5481.56	475.11	5482.45	1.77	
13964.00	90.340	97.010	7286.05	5573.42	460.53	5574.28	4.33	
14058.00	90.400	91.420	7285.44	5667.13	453.62	5667.98	5.95	
14152.00	90.250	89.960	7284.91	5761.13	452.49	5761.97	1.56	
14246.00	90.180	92.710	7284.55	5855.09	450.30	5855.94	2.93	
14340.00	90.280	94.240	7284.18	5948.93	444.60	5949.76	1.63	
14433.00	90.310	95.820	7283.70	6041.58	436.45	6042.40	1.70	
14525.00	90.180	96.580	7283.30	6133.06	426.51	6133.86	0.84	
14617.00	90.280	97.700	7282.93	6224.36	415.08	6225.14	1.22	
14710.00	90.400	97.180	7282.38	6316.60	403.04	6317.36	0.57	
14804.00	90.150	96.330	7281.93	6409.97	391.98	6410.70	0.94	
14898.00	90.060	94.100	7281.76	6503.59	383.44	6504.31	2.37	
14991.00	90.220	93.190	7281.53	6596.41	377.52	6597.12	0.99	
15084.00	90.220	94.300	7281.17	6689.22	371.45	6689.92	1.19	
15177.00	90.150	94.920	7280.87	6781.93	363.97	6782.62	0.67	
15271.00	90.000	92.590	7280.75	6875.73	357.82	6876.41	2.48	
15363.00	89.780	91.900	7280.93	6967.67	354.22	6968.34	0.79	
15456.00	90.090	89.740	7281.03	7060.66	352.88	7061.32	2.35	
15549.00	90.400	88.060	7280.64	7153.63	354.67	7154.30	1.84	
15641.00	90.030	89.660	7280.29	7245.61	356.50	7246.28	1.79	
15733.00	90.060	90.790	7280.22	7337.60	356.14	7338.28	1.23	
15826.00	90.060	89.910	7280.12	7430.60	355.57	7431.27	0.95	
15919.00	89.970	88.760	7280.10	7523.59	356.65	7524.27	1.24	
16013.00	90.150	87.760	7280.00	7617.54	359.50	7618.22	1.08	
16106.00	90.090	89.910	7279.80	7710.51	361.40	7711.20	2.31	
16200.00	90.220	92.890	7279.55	7804.48	359.10	7805.16	3.17	
16293.00	90.310	95.040	7279.12	7897.26	352.67	7897.93	2.31	
16387.00	90.180	93.590	7278.72	7991.01	345.60	7991.66	1.55	





# Actual Wellpath Report

BOST FARM 41N-8C-L AWP

Page 8 of 11



## REFERENCE WELLPATH IDENTIFICATION

Operator	SRC ENERGY	Slot	SLOT#41 BOST FARM 41N-8C-L (1377'FNL & 941'FWL, SEC.07)
Area	COLORADO	Well	BOST FARM 41N-8C-L
Field	WELD COUNTY (NAD83,TRUE NORTH)	Wellbore	BOST FARM 41N-8C-L AWB
Facility	SEC.07-T05N-R66W		

## WELLPATH DATA (194 stations)

MD [ft]	Inclination [°]	Azimuth [°]	TVD [ft]	Vert Sect [ft]	North [ft]	East [ft]	DLS [°/100ft]	Comments
16479.00	90.120	90.720	7278.48	8082.94	342.14	8083.58	3.12	
16573.00	89.970	89.730	7278.40	8176.93	341.77	8177.58	1.07	
16666.00	89.910	89.800	7278.50	8269.93	342.15	8270.58	0.10	
16759.00	89.750	90.720	7278.78	8362.93	341.73	8363.58	1.00	
16851.00	90.150	92.160	7278.86	8454.90	339.42	8455.55	1.62	
16944.00	89.880	96.120	7278.83	8547.65	332.70	8548.29	4.27	
17039.00	90.150	93.670	7278.81	8642.32	324.60	8642.93	2.59	
17133.00	89.940	93.690	7278.73	8736.13	318.56	8736.74	0.22	
17227.00	90.060	91.520	7278.73	8830.04	314.29	8830.63	2.31	
17320.00	90.030	91.660	7278.66	8923.01	311.71	8923.60	0.15	
17413.00	89.690	87.830	7278.89	9015.99	312.13	9016.58	4.13	
17505.00	89.600	87.390	7279.46	9107.90	315.96	9108.50	0.49	
17611.00	89.660	79.420	7280.14	9213.09	328.13	9213.71	7.52	LAST BH SURVEY (1007'FNL & 414'FEL, SEC.08)
17635.00	89.660	79.420	7280.28	9236.67	332.53	9237.30	0.00	PROJ TO BIT (1004'FNL & 390'FEL, SEC.08)

## HOLE & CASING SECTIONS - Ref Wellbore: BOST FARM 41N-8C-L AWB Ref Wellpath: BOST FARM 41N-8C-L AWP

String/Diameter	Start MD [ft]	End MD [ft]	Interval [ft]	Start TVD [ft]	End TVD [ft]	Start N/S [ft]	Start E/W [ft]	End N/S [ft]	End E/W [ft]
13.5in Open Hole	20.00	1830.00	1810.00	20.00	1796.78	0.00	0.00	71.41	-287.48
9.625in Casing Surface	20.00	1830.00	1810.00	20.00	1796.78	0.00	0.00	71.41	-287.48
8.5in Open Hole	1830.00	17635.00	15805.00	1796.78	7280.28	71.41	-287.48	332.53	9237.30



# Actual Wellpath Report

BOST FARM 41N-8C-L AWP

Page 9 of 11



REFERENCE WELLPATH IDENTIFICATION			
Operator	SRC ENERGY	Slot	SLOT#41 BOST FARM 41N-8C-L (1377'FNL & 941'FWL, SEC.07)
Area	COLORADO	Well	BOST FARM 41N-8C-L
Field	WELD COUNTY (NAD83,TRUE NORTH)	Wellbore	BOST FARM 41N-8C-L AWB
Facility	SEC.07-T05N-R66W		

TARGETS								
Name	TVD [ft]	North [ft]	East [ft]	Grid East [US ft]	Grid North [US ft]	Latitude	Longitude	Shape
SEC.07-T05N-R66W	25.00	-1428.51	324.18	3187161.59	1394309.79	40°24'49.806"N	104°49'40.249"W	polygon
SEC.08-T05N-R66W	25.00	-1428.51	324.18	3187161.59	1394309.79	40°24'49.806"N	104°49'40.249"W	polygon
BOST FARM 41N-8C-L TOP OF PROD REV-2 (1011'FNL & 150'FWL, SEC.07)	7050.21	379.95	-792.42	3186031.38	1396109.68	40°25'07.676"N	104°49'54.685"W	point
BOST FARM 41N-8C-L TOP OF PROD ON PLAT (1011'FNL & 150'FWL, SEC.07)	7067.00	379.95	-792.42	3186031.38	1396109.68	40°25'07.676"N	104°49'54.685"W	point
TARGET#1	7093.30	377.57	493.20	3187316.93	1396117.02	40°25'07.653"N	104°49'38.063"W	point
TARGET#2	7219.20	373.83	2514.90	3189338.52	1396128.58	40°25'07.615"N	104°49'11.925"W	point
BOST FARM 41N-8C-L BHL ON PLAT (974'FNL & 460'FEL, SEC.08)	7277.00	361.60	9167.55	3195990.80	1396166.69	40°25'07.478"N	104°47'45.913"W	point
BOST FARM 41N-8C-L BHL REV-2 (974'FNL & 460'FEL, SEC.08)	7280.10	361.60	9167.55	3195990.80	1396166.69	40°25'07.478"N	104°47'45.913"W	point
TARGET#4	7280.30	373.00	6341.70	3193165.06	1396156.70	40°25'07.600"N	104°48'22.448"W	point
TARGET4	7280.30	373.00	6341.70	3193165.06	1396156.70	40°25'07.600"N	104°48'22.448"W	point
BOST FARM 1N-8C-L HARDLINE BOX	7286.00	40.07	0.31	3186826.63	1395775.82	40°25'04.318"N	104°49'44.436"W	polygon
TARGET#3	7290.80	409.00	4558.00	3191381.21	1396179.21	40°25'07.959"N	104°48'45.510"W	point



# Actual Wellpath Report

## BOST FARM 41N-8C-L AWP

Page 10 of 11



### REFERENCE WELLPATH IDENTIFICATION

Operator	SRC ENERGY	Slot	SLOT#41 BOST FARM 41N-8C-L (1377'FNL & 941'FWL, SEC.07)
Area	COLORADO	Well	BOST FARM 41N-8C-L
Field	WELD COUNTY (NAD83,TRUE NORTH)	Wellbore	BOST FARM 41N-8C-L AWB
Facility	SEC.07-T05N-R66W		

### WELLPATH COMPOSITION - Ref Wellbore: BOST FARM 41N-8C-L AWB      Ref Wellpath: BOST FARM 41N-8C-L AWP

Start MD [ft]	End MD [ft]	Positional Uncertainty Model	Log Name/Comment	Wellbore
20.00	1762.00	BHI NaviTrak (Standard)	13 1/2" SURFACE SECTION <137-1762>	BOST FARM 41N-8C-L AWB
1762.00	17611.00	BHI AutoTrak Curve (MagCAD+IFR1, Short spacing)	8 1/2" MONOBORE SURVEYS <1851-17611>	BOST FARM 41N-8C-L AWB
17611.00	17635.00	Blind Drilling (std)	Projection to bit	BOST FARM 41N-8C-L AWB



# Actual Wellpath Report

BOST FARM 41N-8C-L AWP

Page 11 of 11



## REFERENCE WELLPATH IDENTIFICATION

Operator	SRC ENERGY	Slot	SLOT#41 BOST FARM 41N-8C-L (1377'FNL & 941'FWL, SEC.07)
Area	COLORADO	Well	BOST FARM 41N-8C-L
Field	WELD COUNTY (NAD83,TRUE NORTH)	Wellbore	BOST FARM 41N-8C-L AWB
Facility	SEC.07-T05N-R66W		

## WELLPATH COMMENTS

MD [ft]	Inclination [°]	Azimuth [°]	TVD [ft]	Comment
7600.00	86.896	94.851	7051.20	LANDING POINT (1003'FNL & 179'FWL, SEC.07)
17611.00	89.660	79.420	7280.14	LAST BH SURVEY (1007'FNL & 414'FEL, SEC.08)
17635.00	89.660	79.420	7280.28	PROJ TO BIT (1004'FNL & 390'FEL, SEC.08)