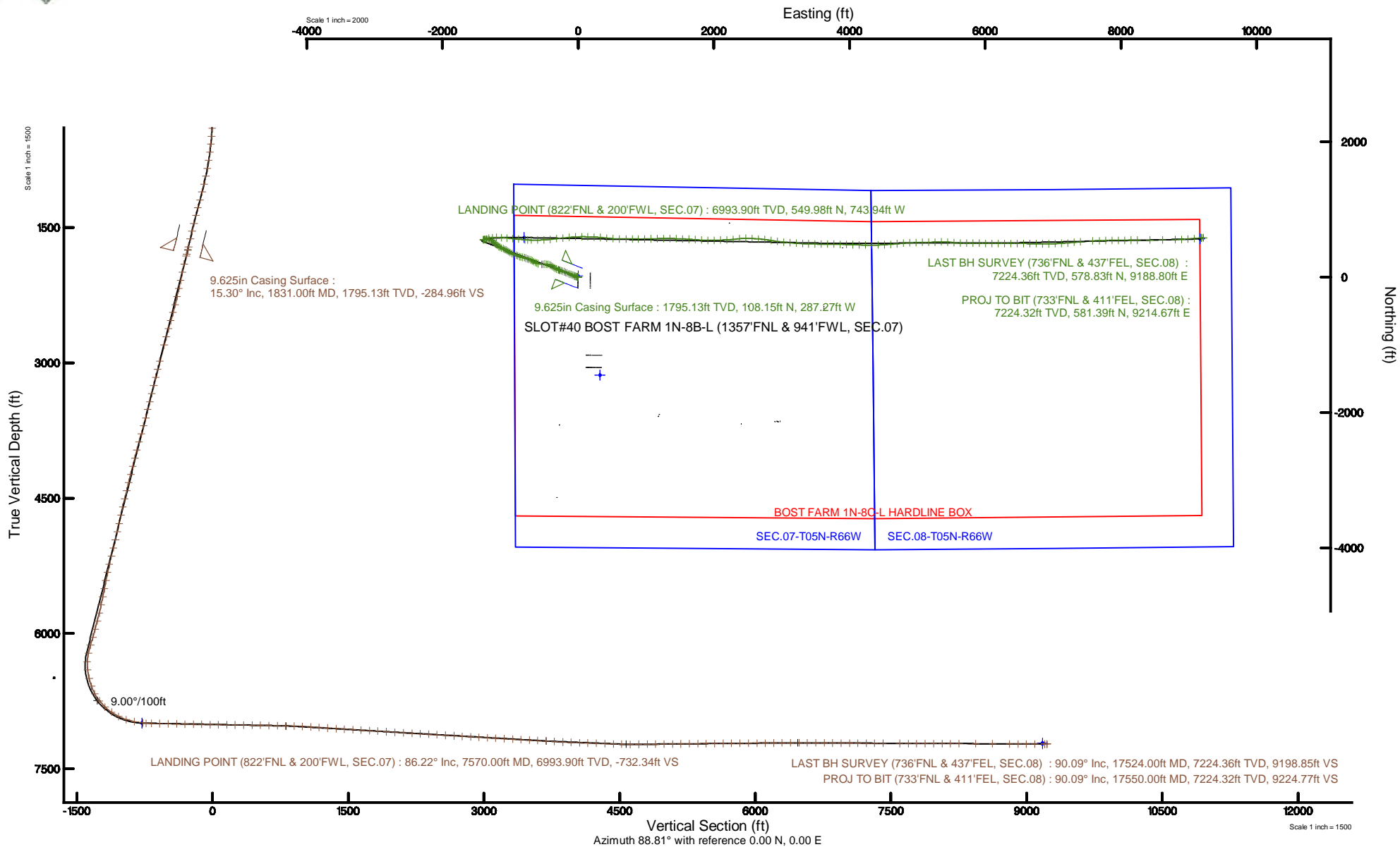


SRC ENERGY

Location: COLORADO Slot: SLOT#40 BOST FARM 1N-8B-L (1357'FNL & 941'FWL, SEC.07)
 Field: WELD COUNTY (NAD83,TRUE NORTH) Well: BOST FARM 1N-8B-L
 Facility: SEC.07-T05N-R66W Wellbore: BOST FARM 1N-8B-L PWB

Plot reference wellpath is BOST FARM 1N-8B-L (REV-B.0) PWP	Grid System: NAD83 / Lambert Colorado SP, Northern Zone (501), US feet
True vertical depths are referenced to PRECISION 462 (20') (RKB)	North Reference: True north
Measured depths are referenced to PRECISION 462 (20') (RKB)	Scale: True distance
PRECISION 462 (20') (RKB) to Mean Sea Level: 4901 feet	Depths are in feet
Mean Sea Level to Mud line (At Slot: SLOT#40 BOST FARM 1N-8B-L (1357'FNL & 941'FWL, SEC.07)): 0 feet	Created by: hanisab on 2019-02-04
Coordinates are in feet referenced to Slot	Database: WellArchitectDB





Actual Wellpath Report

BOST FARM 1N-8B-L AWP

Page 1 of 10



REFERENCE WELLPATH IDENTIFICATION

Operator	SRC ENERGY	Slot	SLOT#40 BOST FARM 1N-8B-L (1357'FNL & 941'FWL, SEC.07)
Area	COLORADO	Well	BOST FARM 1N-8B-L
Field	WELD COUNTY (NAD83,TRUE NORTH)	Wellbore	BOST FARM 1N-8B-L AWP
Facility	SEC.07-T05N-R66W		

REPORT SETUP INFORMATION

Projection System	NAD83 / Lambert Colorado SP, Northern Zone (501), US feet	Software System	WellArchitect® 5.1
North Reference	True	User	Hanisab
Scale	0.999961	Report Generated	2/4/2019 at 10:03:59 PM
Convergence at slot	0.43° East	Database/Source file	WellArchitectDB/BOST_FARM_1N-8B-L_AWP.xml

WELLPATH LOCATION

	Local coordinates		Grid coordinates		Geographic coordinates	
	North[ft]	East[ft]	Easting[US ft]	Northing[US ft]	Latitude	Longitude
Slot Location	1448.55	-323.85	3186826.78	1395755.79	40°25'04.120"N	104°49'44.436"W
Facility Reference Pt			3187161.59	1394309.79	40°24'49.806"N	104°49'40.249"W
Field Reference Pt			3171284.48	1426358.81	40°30'07.643"N	104°53'02.634"W

WELLPATH DATUM

Calculation method	Minimum curvature	PRECISION 462 (20') (RKB) to Facility Vertical Datum	4901.00ft
Horizontal Reference Pt	Slot	PRECISION 462 (20') (RKB) to Mean Sea Level	4901.00ft
Vertical Reference Pt	PRECISION 462 (20') (RKB)	PRECISION 462 (20') (RKB) to Mud Line at Slot (SLOT#40 BOST FARM 1N-8B-L (1357'FNL & 941'FWL, SEC.07))	4901.00ft
MD Reference Pt	PRECISION 462 (20') (RKB)	Section Origin	N 0.00, E 0.00 ft
Field Vertical Reference	Mean Sea Level	Section Azimuth	88.81°



Actual Wellpath Report

BOST FARM 1N-8B-L AWP

Page 2 of 10



REFERENCE WELLPATH IDENTIFICATION

Operator	SRC ENERGY	Slot	SLOT#40 BOST FARM 1N-8B-L (1357'FNL & 941'FWL, SEC.07)
Area	COLORADO	Well	BOST FARM 1N-8B-L
Field	WELD COUNTY (NAD83,TRUE NORTH)	Wellbore	BOST FARM 1N-8B-L AWP
Facility	SEC.07-T05N-R66W		

WELLPATH DATA (188 stations) † = interpolated/extrapolated station

MD [ft]	Inclination [°]	Azimuth [°]	TVD [ft]	Vert Sect [ft]	North [ft]	East [ft]	DLS [°/100ft]	Comments
0.00†	0.000	185.030	0.00	0.00	0.00	0.00	0.00	
20.00	0.000	185.030	20.00	0.00	0.00	0.00	0.00	
137.00	0.280	185.030	137.00	-0.03	-0.28	-0.03	0.24	
226.00	0.470	197.910	226.00	-0.17	-0.85	-0.16	0.23	
309.00	0.860	260.410	308.99	-0.90	-1.28	-0.88	0.92	
399.00	3.540	273.740	398.92	-4.34	-1.21	-4.31	3.01	
489.00	4.280	280.400	488.71	-10.40	-0.42	-10.39	0.96	
579.00	6.500	289.020	578.31	-18.47	1.85	-18.51	2.62	
669.00	7.970	295.390	667.59	-28.83	6.18	-28.96	1.86	
759.00	10.150	294.980	756.46	-41.53	12.21	-41.79	2.42	
849.00	11.270	292.880	844.89	-56.68	18.98	-57.08	1.32	
939.00	13.740	290.940	932.75	-74.61	26.22	-75.17	2.78	
1029.00	14.140	290.600	1020.10	-94.72	33.90	-95.44	0.45	
1119.00	14.320	291.140	1107.34	-115.22	41.79	-116.11	0.25	
1209.00	16.490	291.760	1194.10	-137.28	50.54	-138.36	2.42	
1299.00	16.490	292.260	1280.40	-160.76	60.11	-162.05	0.16	
1389.00	15.720	292.360	1366.87	-183.65	69.59	-185.14	0.86	
1479.00	14.530	292.890	1453.75	-205.14	78.62	-206.82	1.33	
1569.00	13.690	289.730	1541.03	-225.40	86.60	-227.25	1.27	
1659.00	13.320	289.280	1628.54	-245.06	93.62	-247.06	0.43	
1749.00	14.390	290.040	1715.92	-265.19	100.88	-267.35	1.21	
1781.00	15.030	289.850	1746.87	-272.77	103.65	-274.99	2.01	
1852.00	15.420	290.660	1815.38	-290.13	110.11	-292.48	0.63	
1946.00	14.560	291.880	1906.18	-312.60	118.92	-315.14	0.97	
2040.00	13.760	298.870	1997.33	-333.14	128.72	-335.89	2.01	
2132.00	15.320	305.440	2086.39	-352.37	141.05	-355.38	2.47	
2225.00	15.400	307.240	2176.07	-371.90	155.65	-375.22	0.52	
2318.00	15.370	301.340	2265.74	-391.97	169.53	-395.58	1.68	
2410.00	15.400	291.890	2354.46	-413.49	180.43	-417.33	2.72	
2502.00	15.330	281.640	2443.19	-436.59	187.44	-440.58	2.95	



Actual Wellpath Report

BOST FARM 1N-8B-L AWP

Page 3 of 10



REFERENCE WELLPATH IDENTIFICATION

Operator	SRC ENERGY	Slot	SLOT#40 BOST FARM 1N-8B-L (1357'FNL & 941'FWL, SEC.07)
Area	COLORADO	Well	BOST FARM 1N-8B-L
Field	WELD COUNTY (NAD83,TRUE NORTH)	Wellbore	BOST FARM 1N-8B-L AWB
Facility	SEC.07-T05N-R66W		

WELLPATH DATA (188 stations)

MD [ft]	Inclination [°]	Azimuth [°]	TVD [ft]	Vert Sect [ft]	North [ft]	East [ft]	DLS [°/100ft]	Comments
2596.00	15.390	275.200	2533.84	-461.10	191.08	-465.17	1.81	
2689.00	15.400	269.840	2623.50	-485.71	192.16	-489.81	1.53	
2782.00	15.490	266.070	2713.15	-510.46	191.28	-514.55	1.08	
2874.00	14.930	271.120	2801.93	-534.58	190.67	-538.66	1.56	
3061.00	15.410	287.660	2982.50	-582.18	198.68	-586.44	2.32	
3154.00	15.480	290.930	3072.14	-605.37	206.86	-609.81	0.94	
3246.00	15.440	296.930	3160.82	-627.55	216.79	-632.19	1.74	
3339.00	15.510	297.530	3250.44	-649.37	228.15	-654.26	0.19	
3432.00	15.730	299.910	3340.01	-671.07	240.18	-676.21	0.73	
3525.00	15.500	297.310	3429.58	-692.78	252.17	-698.18	0.79	
3618.00	15.660	292.940	3519.17	-715.16	262.76	-720.78	1.27	
3712.00	15.460	287.490	3609.73	-738.61	271.47	-744.42	1.57	
3805.00	15.690	287.040	3699.31	-762.29	278.88	-768.26	0.28	
3898.00	15.660	285.680	3788.85	-786.25	285.96	-792.37	0.40	
3990.00	15.660	282.050	3877.44	-810.22	291.91	-816.47	1.06	
4084.00	15.500	282.730	3967.99	-834.76	297.32	-841.13	0.26	
4177.00	15.350	289.990	4057.64	-858.30	304.27	-864.82	2.08	
4270.00	15.580	296.660	4147.28	-880.82	314.08	-887.55	1.93	
4364.00	15.490	292.300	4237.85	-903.50	324.51	-910.44	1.25	
4457.00	14.990	290.430	4327.58	-926.07	333.42	-933.21	0.75	
4552.00	15.190	290.160	4419.31	-949.08	342.00	-956.40	0.22	
4645.00	15.000	293.220	4509.10	-971.39	350.94	-978.90	0.88	
4739.00	14.990	300.920	4599.91	-992.76	361.99	-1000.51	2.12	
4832.00	14.900	302.260	4689.76	-1012.93	374.55	-1020.94	0.38	
4927.00	14.870	302.710	4781.57	-1033.23	387.66	-1041.52	0.13	
5020.00	14.980	300.600	4871.44	-1053.36	400.22	-1061.91	0.60	
5113.00	14.590	294.860	4961.36	-1074.10	411.27	-1082.89	1.63	
5206.00	15.010	292.830	5051.28	-1095.62	420.86	-1104.61	0.72	
5300.00	14.840	294.200	5142.11	-1117.61	430.52	-1126.81	0.42	
5394.00	14.940	295.810	5232.95	-1139.28	440.73	-1148.70	0.45	



Actual Wellpath Report

BOST FARM 1N-8B-L AWP

Page 4 of 10



REFERENCE WELLPATH IDENTIFICATION

Operator	SRC ENERGY	Slot	SLOT#40 BOST FARM 1N-8B-L (1357'FNL & 941'FWL, SEC.07)
Area	COLORADO	Well	BOST FARM 1N-8B-L
Field	WELD COUNTY (NAD83,TRUE NORTH)	Wellbore	BOST FARM 1N-8B-L AWB
Facility	SEC.07-T05N-R66W		

WELLPATH DATA (188 stations) † = interpolated/extrapolated station

MD [ft]	Inclination [°]	Azimuth [°]	TVD [ft]	Vert Sect [ft]	North [ft]	East [ft]	DLS [°/100ft]	Comments
5489.00	14.480	302.260	5324.84	-1160.11	452.40	-1169.77	1.79	
5582.00	14.670	311.380	5414.86	-1178.48	466.40	-1188.44	2.47	
5675.00	15.320	313.440	5504.70	-1195.90	482.63	-1206.20	0.90	
5768.00	15.120	312.180	5594.43	-1213.46	499.22	-1224.11	0.42	
5861.00	15.410	310.490	5684.15	-1231.50	515.39	-1242.49	0.57	
5953.00	15.880	304.030	5772.75	-1250.91	530.37	-1262.22	1.96	
6046.00	15.830	294.270	5862.23	-1272.76	542.71	-1284.33	2.86	
6139.00	16.130	282.050	5951.66	-1296.80	550.62	-1308.54	3.63	
6232.00	16.380	272.980	6040.96	-1322.46	554.00	-1334.27	2.74	
6325.00	16.360	272.610	6130.19	-1348.60	555.28	-1360.45	0.11	
6418.00	12.450	266.700	6220.25	-1371.70	555.30	-1383.55	4.49	
6511.00	3.080	228.920	6312.33	-1383.67	553.07	-1395.48	10.96	
6603.00	6.900	98.320	6404.13	-1380.11	550.64	-1391.86	10.01	
6697.00	14.390	72.080	6496.50	-1363.32	553.42	-1375.13	9.30	
6789.00	20.400	66.480	6584.25	-1337.51	563.35	-1349.52	6.77	
6881.00	28.900	74.280	6667.82	-1301.08	575.80	-1313.35	9.87	
6975.00	38.310	84.390	6746.08	-1249.89	584.83	-1262.33	11.62	
7068.00	46.700	91.340	6814.62	-1187.20	586.86	-1199.66	10.33	
7160.00	54.850	94.480	6872.75	-1116.19	583.13	-1128.57	9.24	
7253.00	63.810	94.960	6920.14	-1036.71	576.54	-1048.93	9.64	
7345.00	72.150	95.750	6954.61	-952.06	568.57	-964.09	9.10	
7439.00	79.370	95.750	6977.72	-861.67	559.45	-873.50	7.68	
7531.00	84.390	93.530	6990.71	-771.10	552.09	-782.75	5.96	
7570.00†	86.225	92.698	6993.90	-732.34	549.98	-743.94	5.16	LANDING POINT (822'FNL & 200'FWL, SEC.07)
7626.00	88.860	91.510	6996.30	-676.49	547.93	-688.04	5.16	
7720.00	88.860	88.830	6998.17	-582.55	547.65	-594.07	2.85	
7813.00	88.770	86.940	7000.09	-489.58	551.08	-501.15	2.03	
7907.00	88.710	85.010	7002.16	-395.72	557.68	-407.41	2.05	
8000.00	88.770	83.510	7004.21	-303.04	566.98	-314.90	1.61	
8092.00	88.920	83.810	7006.06	-211.43	577.14	-223.49	0.36	



Actual Wellpath Report

BOST FARM 1N-8B-L AWP

Page 5 of 10



REFERENCE WELLPATH IDENTIFICATION

Operator	SRC ENERGY	Slot	SLOT#40 BOST FARM 1N-8B-L (1357'FNL & 941'FWL, SEC.07)
Area	COLORADO	Well	BOST FARM 1N-8B-L
Field	WELD COUNTY (NAD83,TRUE NORTH)	Wellbore	BOST FARM 1N-8B-L AWB
Facility	SEC.07-T05N-R66W		

WELLPATH DATA (188 stations)

MD [ft]	Inclination [°]	Azimuth [°]	TVD [ft]	Vert Sect [ft]	North [ft]	East [ft]	DLS [°/100ft]	Comments
8184.00	89.200	84.980	7007.57	-119.72	586.12	-131.94	1.31	
8278.00	88.890	86.670	7009.14	-25.86	592.96	-38.21	1.83	
8370.00	89.050	89.650	7010.79	66.11	595.91	53.72	3.24	
8462.00	89.140	91.810	7012.24	158.04	594.74	145.70	2.35	
8555.00	89.200	92.280	7013.59	250.88	591.42	238.63	0.51	
8648.00	89.170	95.260	7014.91	343.51	585.31	331.41	3.20	
8742.00	89.010	95.850	7016.41	436.85	576.21	424.95	0.65	
8834.00	88.920	93.700	7018.07	528.33	568.56	516.61	2.34	
8928.00	88.770	91.770	7019.96	622.08	564.07	610.48	2.06	
9023.00	88.520	89.800	7022.21	717.00	562.77	705.44	2.09	
9116.00	88.890	90.130	7024.31	809.95	562.83	798.42	0.53	
9208.00	88.460	90.580	7026.44	901.90	562.26	890.39	0.68	
9301.00	86.400	88.890	7030.61	994.78	562.69	983.29	2.86	
9394.00	86.330	87.920	7036.51	1087.59	565.27	1076.06	1.04	
9486.00	86.390	87.950	7042.35	1179.39	568.58	1167.82	0.07	
9579.00	86.360	89.630	7048.23	1272.21	570.54	1260.61	1.80	
9672.00	86.430	90.730	7054.08	1364.99	570.25	1353.42	1.18	
9765.00	86.490	91.450	7059.82	1457.74	568.48	1446.23	0.78	
9858.00	86.430	93.020	7065.56	1550.39	564.86	1538.98	1.69	
9952.00	86.580	93.770	7071.29	1643.92	559.30	1632.64	0.81	
10045.00	86.390	93.730	7076.99	1736.40	553.23	1725.26	0.21	
10137.00	86.360	94.020	7082.81	1827.86	547.03	1816.87	0.32	
10232.00	86.430	91.010	7088.78	1922.46	542.87	1911.58	3.16	
10327.00	86.490	87.190	7094.65	2017.26	544.36	2006.37	4.01	
10420.00	86.460	88.520	7100.37	2110.07	547.83	2099.13	1.43	
10514.00	86.120	88.430	7106.45	2203.87	550.33	2192.89	0.37	
10608.00	86.580	83.270	7112.44	2297.52	557.12	2286.43	5.50	
10701.00	86.760	82.490	7117.84	2389.87	568.62	2378.55	0.86	
10793.00	86.890	91.370	7122.95	2481.58	573.54	2470.19	9.64	
10888.00	86.670	92.760	7128.29	2576.28	570.12	2564.97	1.48	



Actual Wellpath Report

BOST FARM 1N-8B-L AWP

Page 6 of 10

**BAKER
HUGHES**
a GE company



REFERENCE WELLPATH IDENTIFICATION

Operator	SRC ENERGY	Slot	SLOT#40 BOST FARM 1N-8B-L (1357'FNL & 941'FWL, SEC.07)
Area	COLORADO	Well	BOST FARM 1N-8B-L
Field	WELD COUNTY (NAD83,TRUE NORTH)	Wellbore	BOST FARM 1N-8B-L AWB
Facility	SEC.07-T05N-R66W		

WELLPATH DATA (188 stations)

MD [ft]	Inclination [°]	Azimuth [°]	TVD [ft]	Vert Sect [ft]	North [ft]	East [ft]	DLS [°/100ft]	Comments
10982.00	86.800	94.500	7133.64	2669.79	564.18	2658.63	1.85	
11075.00	86.550	96.970	7139.03	2761.95	554.90	2751.00	2.67	
11169.00	86.730	98.750	7144.54	2854.61	542.07	2843.95	1.90	
11262.00	86.730	98.280	7149.85	2946.13	528.32	2935.78	0.50	
11356.00	86.740	97.010	7155.20	3038.86	515.84	3028.79	1.35	
11449.00	86.610	94.940	7160.60	3130.98	506.17	3121.12	2.23	
11543.00	86.580	93.110	7166.18	3224.42	499.59	3214.72	1.94	
11636.00	86.670	92.260	7171.66	3317.04	495.24	3307.46	0.92	
11728.00	86.700	92.030	7176.98	3408.73	491.80	3399.24	0.25	
11821.00	86.550	91.100	7182.45	3501.46	489.26	3492.04	1.01	
11914.00	86.860	90.220	7187.80	3594.26	488.20	3584.88	1.00	
12007.00	86.770	90.050	7192.96	3687.09	487.98	3677.74	0.21	
12100.00	86.920	90.950	7198.08	3779.91	487.17	3770.59	0.98	
12193.00	86.700	91.770	7203.26	3872.67	484.96	3863.42	0.91	
12286.00	88.060	92.260	7207.51	3965.43	481.70	3956.26	1.55	
12378.00	88.060	91.450	7210.62	4057.24	478.72	4048.16	0.88	
12471.00	87.910	91.650	7213.89	4150.08	476.21	4141.07	0.27	
12565.00	87.810	91.150	7217.40	4243.92	473.91	4234.98	0.54	
12659.00	88.030	89.840	7220.82	4337.81	473.10	4328.91	1.41	
12752.00	88.030	88.080	7224.01	4430.75	474.79	4421.84	1.89	
12846.00	87.750	86.810	7227.47	4524.66	478.97	4515.68	1.38	
12938.00	90.120	86.020	7229.18	4616.56	484.72	4607.47	2.72	
13032.00	90.280	85.000	7228.86	4710.40	492.08	4701.18	1.10	
13127.00	90.920	85.500	7227.86	4805.21	499.95	4795.85	0.85	
13219.00	90.550	86.700	7226.68	4897.10	506.21	4887.63	1.36	
13312.00	90.650	88.060	7225.71	4990.06	510.46	4980.52	1.47	
13406.00	90.580	88.840	7224.70	5084.06	513.00	5074.48	0.83	
13499.00	90.680	89.110	7223.67	5177.05	514.66	5167.46	0.31	
13593.00	90.620	88.070	7222.61	5271.04	516.98	5261.43	1.11	
13687.00	90.740	88.800	7221.49	5365.03	519.54	5355.38	0.79	



Actual Wellpath Report

BOST FARM 1N-8B-L AWP

Page 7 of 10



REFERENCE WELLPATH IDENTIFICATION

Operator	SRC ENERGY	Slot	SLOT#40 BOST FARM 1N-8B-L (1357'FNL & 941'FWL, SEC.07)
Area	COLORADO	Well	BOST FARM 1N-8B-L
Field	WELD COUNTY (NAD83,TRUE NORTH)	Wellbore	BOST FARM 1N-8B-L AWB
Facility	SEC.07-T05N-R66W		

WELLPATH DATA (188 stations)

MD [ft]	Inclination [°]	Azimuth [°]	TVD [ft]	Vert Sect [ft]	North [ft]	East [ft]	DLS [°/100ft]	Comments
13780.00	90.800	94.130	7220.24	5457.89	517.17	5448.31	5.73	
13873.00	90.460	96.420	7219.22	5550.29	508.62	5540.91	2.49	
13967.00	90.490	92.390	7218.44	5643.82	501.40	5634.61	4.29	
14061.00	90.310	89.980	7217.78	5737.73	499.46	5728.58	2.57	
14155.00	90.430	89.750	7217.18	5831.71	499.68	5822.57	0.28	
14249.00	90.490	90.570	7216.42	5925.68	499.41	5916.57	0.87	
14342.00	90.520	90.970	7215.60	6018.62	498.16	6009.56	0.43	
14435.00	90.740	90.220	7214.58	6111.57	497.20	6102.55	0.84	
14527.00	90.580	89.940	7213.52	6203.54	497.07	6194.54	0.35	
14620.00	90.520	89.820	7212.63	6296.52	497.27	6287.54	0.14	
14713.00	90.430	89.340	7211.86	6389.51	497.95	6380.53	0.53	
14807.00	89.880	90.710	7211.60	6483.48	497.91	6474.53	1.57	
14900.00	89.570	91.180	7212.05	6576.42	496.37	6567.51	0.61	
14994.00	89.660	90.820	7212.68	6670.35	494.73	6661.50	0.39	
15087.00	89.750	90.930	7213.16	6763.28	493.31	6754.48	0.15	
15179.00	89.600	90.640	7213.68	6855.23	492.05	6846.47	0.35	
15273.00	89.350	89.620	7214.54	6949.20	491.84	6940.47	1.12	
15366.00	89.600	87.670	7215.39	7042.19	494.04	7033.43	2.11	
15458.00	89.690	86.810	7215.96	7134.15	498.47	7125.32	0.94	
15551.00	89.780	85.140	7216.39	7227.03	504.99	7218.09	1.80	
15643.00	89.780	84.580	7216.75	7318.81	513.24	7309.72	0.61	
15736.00	89.600	85.350	7217.25	7411.60	521.40	7402.36	0.85	
15921.00	89.510	86.990	7218.69	7596.40	533.75	7586.93	0.89	
16015.00	89.720	88.120	7219.32	7690.37	537.76	7680.84	1.22	
16109.00	90.000	88.180	7219.55	7784.36	540.80	7774.79	0.30	
16202.00	89.910	88.880	7219.62	7877.36	543.19	7867.76	0.76	
16296.00	89.940	89.690	7219.74	7971.36	544.36	7961.76	0.86	
16389.00	89.750	89.630	7220.00	8064.35	544.91	8054.75	0.21	
16483.00	89.750	90.120	7220.41	8158.33	545.12	8148.75	0.52	
16576.00	89.850	89.190	7220.73	8251.32	545.68	8241.75	1.01	



Actual Wellpath Report

BOST FARM 1N-8B-L AWP

Page 8 of 10



REFERENCE WELLPATH IDENTIFICATION

Operator	SRC ENERGY	Slot	SLOT#40 BOST FARM 1N-8B-L (1357'FNL & 941'FWL, SEC.07)
Area	COLORADO	Well	BOST FARM 1N-8B-L
Field	WELD COUNTY (NAD83,TRUE NORTH)	Wellbore	BOST FARM 1N-8B-L AWB
Facility	SEC.07-T05N-R66W		

WELLPATH DATA (188 stations)

MD [ft]	Inclination [°]	Azimuth [°]	TVD [ft]	Vert Sect [ft]	North [ft]	East [ft]	DLS [°/100ft]	Comments
16761.00	89.660	90.010	7221.52	8436.30	546.97	8426.74	0.45	
16947.00	89.570	87.930	7222.77	8622.28	550.31	8612.70	1.12	
17136.00	89.630	89.140	7224.09	8811.27	555.14	8801.63	0.64	
17230.00	90.030	87.640	7224.37	8905.26	557.78	8895.59	1.65	
17322.00	89.970	86.330	7224.37	8997.22	562.62	8987.46	1.43	
17415.00	89.970	85.540	7224.42	9090.10	569.21	9080.22	0.85	
17524.00	90.090	84.340	7224.36	9198.85	578.83	9188.80	1.11	LAST BH SURVEY (736'FNL & 437'FEL, SEC.08)
17550.00	90.090	84.340	7224.32	9224.77	581.39	9214.67	0.00	PROJ TO BIT (733'FNL & 411'FEL, SEC.08)

HOLE & CASING SECTIONS - Ref Wellbore: BOST FARM 1N-8B-L AWB Ref Wellpath: BOST FARM 1N-8B-L AWP

String/Diameter	Start MD [ft]	End MD [ft]	Interval [ft]	Start TVD [ft]	End TVD [ft]	Start N/S [ft]	Start E/W [ft]	End N/S [ft]	End E/W [ft]
13.5in Open Hole	20.00	1831.00	1811.00	20.00	1795.13	0.00	0.00	108.15	-287.27
9.625in Casing Surface	20.00	1831.00	1811.00	20.00	1795.13	0.00	0.00	108.15	-287.27
8.5in Open Hole	1831.00	17550.00	15719.00	1795.13	7224.32	108.15	-287.27	581.39	9214.67



Actual Wellpath Report

BOST FARM 1N-8B-L AWP

Page 9 of 10



REFERENCE WELLPATH IDENTIFICATION

Operator	SRC ENERGY	Slot	SLOT#40 BOST FARM 1N-8B-L (1357'FNL & 941'FWL, SEC.07)
Area	COLORADO	Well	BOST FARM 1N-8B-L
Field	WELD COUNTY (NAD83,TRUE NORTH)	Wellbore	BOST FARM 1N-8B-L AWB
Facility	SEC.07-T05N-R66W		

TARGETS

Name	TVD [ft]	North [ft]	East [ft]	Grid East [US ft]	Grid North [US ft]	Latitude	Longitude	Shape
SEC.07-T05N-R66W	25.00	-1448.55	323.87	3187161.59	1394309.79	40°24'49.806"N	104°49'40.249"W	polygon
SEC.08-T05N-R66W	25.00	-1448.55	323.87	3187161.59	1394309.79	40°24'49.806"N	104°49'40.249"W	polygon
BOST FARM 1N-8B-L TOP OF PROD ON PLAT (787'FNL 7 150'FWL, SEC.07)	6992.00	584.70	-793.84	3186028.58	1396334.43	40°25'09.898"N	104°49'54.700"W	point
BOST FARM 1N-8B-L TOP OF PROD REV-1 (787'FNL & 150'FWL, SEC.07)	6992.76	584.74	-793.87	3186028.54	1396334.47	40°25'09.898"N	104°49'54.700"W	point
BOST FARM 1N-8B-L BHL ON PLAT (751'FNL & 460'FEL, SEC.08)	7214.00	564.16	9165.48	3195987.36	1396389.26	40°25'09.678"N	104°47'45.935"W	point
BOST FARM 1N-8B-L BHL REV-1 (751'FNL & 460'FEL, SEC.08)	7224.54	564.16	9165.47	3195987.34	1396389.26	40°25'09.678"N	104°47'45.935"W	point

WELLPATH COMPOSITION - Ref Wellbore: BOST FARM 1N-8B-L AWB Ref Wellpath: BOST FARM 1N-8B-L AWP

Start MD [ft]	End MD [ft]	Positional Uncertainty Model	Log Name/Comment	Wellbore
20.00	1781.00	BHI NaviTrak (Standard)	13 1/2" SURFACE SECTION <121-1765>	BOST FARM 1N-8B-L AWB
1781.00	17524.00	BHI AutoTrak Curve (MagCAD+IFR1, Short spacing)	8 1/2" MONOBORE SURVEYS <1852-17524>	BOST FARM 1N-8B-L AWB
17524.00	17550.00	Blind Drilling (std)	Projection to bit	BOST FARM 1N-8B-L AWB



Actual Wellpath Report

BOST FARM 1N-8B-L AWP

Page 10 of 10



REFERENCE WELLPATH IDENTIFICATION

Operator	SRC ENERGY	Slot	SLOT#40 BOST FARM 1N-8B-L (1357'FNL & 941'FWL, SEC.07)
Area	COLORADO	Well	BOST FARM 1N-8B-L
Field	WELD COUNTY (NAD83,TRUE NORTH)	Wellbore	BOST FARM 1N-8B-L AWB
Facility	SEC.07-T05N-R66W		

WELLPATH COMMENTS

MD [ft]	Inclination [°]	Azimuth [°]	TVD [ft]	Comment
7570.00	86.225	92.698	6993.90	LANDING POINT (822'FNL & 200'FWL, SEC.07)
17524.00	90.090	84.340	7224.36	LAST BH SURVEY (736'FNL & 437'FEL, SEC.08)
17550.00	90.090	84.340	7224.32	PROJ TO BIT (733'FNL & 411'FEL, SEC.08)