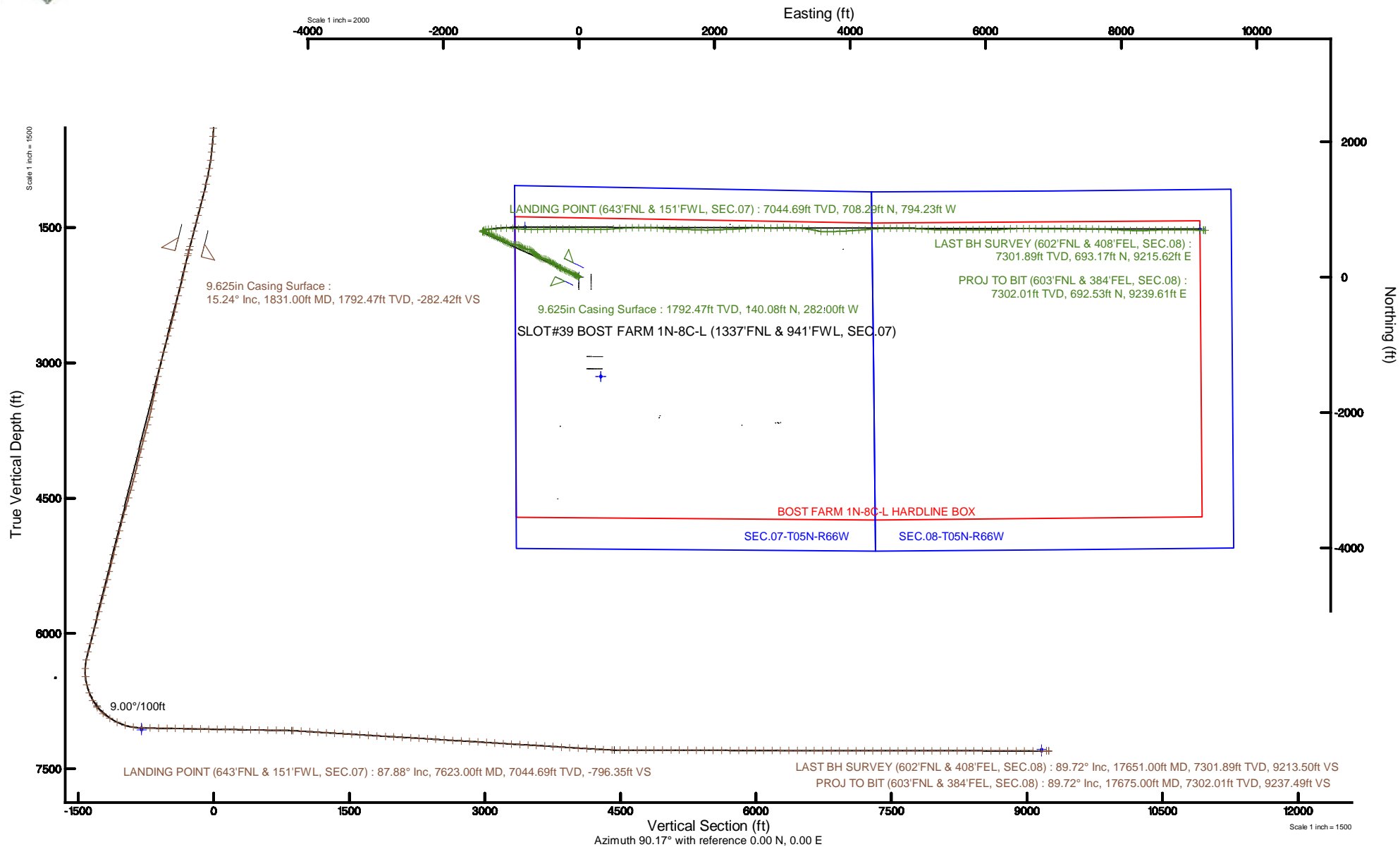


SRC ENERGY

Location: COLORADO Slot: SLOT#39 BOST FARM 1N-8C-L (1337'FNL & 941'FWL, SEC.07)
Field: WELD COUNTY (NAD83,TRUE NORTH) Well: BOST FARM 1N-8C-L
Facility: SEC.07-T05N-R66W Wellbore: BOST FARM 1N-8C-L PWB

Plot reference wellpath is BOST FARM 1N-8C-L (REV-B.0) PWP	Grid System: NAD83 / Lambert Colorado SP, Northern Zone (501), US feet
True vertical depths are referenced to PRECISION 462 (20') (RKB)	North Reference: True north
Measured depths are referenced to PRECISION 462 (20') (RKB)	Scale: True distance
PRECISION 462 (20') (RKB) to Mean Sea Level: 4901 feet	Depths are in feet
Mean Sea Level to Mud line (At Slot: SLOT#39 BOST FARM 1N-8C-L (1337'FNL & 941'FWL, SEC.07)): 0 feet	Created by: hanisab on 2019-02-04
Coordinates are in feet referenced to Slot	Database: WellArchitectDB





Actual Wellpath Report

BOST FARM 1N-8C-L AWP

Page 1 of 10



REFERENCE WELLPATH IDENTIFICATION			
Operator	SRC ENERGY	Slot	SLOT#39 BOST FARM 1N-8C-L (1337'FNL & 941'FWL, SEC.07)
Area	COLORADO	Well	BOST FARM 1N-8C-L
Field	WELD COUNTY (NAD83,TRUE NORTH)	Wellbore	BOST FARM 1N-8C-L AWP
Facility	SEC.07-T05N-R66W		

REPORT SETUP INFORMATION			
Projection System	NAD83 / Lambert Colorado SP, Northern Zone (501), US feet	Software System	WellArchitect® 5.1
North Reference	True	User	Hanisab
Scale	0.999961	Report Generated	2/4/2019 at 9:55:58 PM
Convergence at slot	0.43° East	Database/Source file	WellArchitectDB/BOST_FARM_1N-8C-L_AWP.xml

WELLPATH LOCATION						
	Local coordinates		Grid coordinates		Geographic coordinates	
	North[ft]	East[ft]	Easting[US ft]	Northing[US ft]	Latitude	Longitude
Slot Location	1468.59	-323.85	3186826.63	1395775.82	40°25'04.318"N	104°49'44.436"W
Facility Reference Pt			3187161.59	1394309.79	40°24'49.806"N	104°49'40.249"W
Field Reference Pt			3171284.48	1426358.81	40°30'07.643"N	104°53'02.634"W

WELLPATH DATUM			
Calculation method	Minimum curvature	PRECISION 462 (20') (RKB) to Facility Vertical Datum	4901.00ft
Horizontal Reference Pt	Slot	PRECISION 462 (20') (RKB) to Mean Sea Level	4901.00ft
Vertical Reference Pt	PRECISION 462 (20') (RKB)	PRECISION 462 (20') (RKB) to Mud Line at Slot (SLOT#39 BOST FARM 1N-8C-L (1337'FNL & 941'FWL, SEC.07))	4901.00ft
MD Reference Pt	PRECISION 462 (20') (RKB)	Section Origin	N 0.00, E 0.00 ft
Field Vertical Reference	Mean Sea Level	Section Azimuth	90.17°



Actual Wellpath Report

BOST FARM 1N-8C-L AWP

Page 2 of 10

**BAKER
HUGHES**
a GE company



REFERENCE WELLPATH IDENTIFICATION

Operator	SRC ENERGY	Slot	SLOT#39 BOST FARM 1N-8C-L (1337'FNL & 941'FWL, SEC.07)
Area	COLORADO	Well	BOST FARM 1N-8C-L
Field	WELD COUNTY (NAD83,TRUE NORTH)	Wellbore	BOST FARM 1N-8C-L AWB
Facility	SEC.07-T05N-R66W		

WELLPATH DATA (194 stations) † = interpolated/extrapolated station

MD [ft]	Inclination [°]	Azimuth [°]	TVD [ft]	Vert Sect [ft]	North [ft]	East [ft]	DLS [°/100ft]	Comments
0.00†	0.000	138.550	0.00	0.00	0.00	0.00	0.00	
20.00	0.000	138.550	20.00	0.00	0.00	0.00	0.00	
137.00	0.720	138.550	137.00	0.49	-0.55	0.49	0.62	
226.00	0.210	74.110	225.99	1.02	-0.93	1.01	0.74	
309.00	1.040	323.750	308.99	0.72	-0.28	0.71	1.36	
399.00	2.700	304.770	398.94	-1.51	1.59	-1.51	1.94	
489.00	4.430	303.260	488.76	-6.17	4.71	-6.16	1.92	
579.00	6.870	301.410	578.32	-13.69	9.42	-13.66	2.72	
669.00	8.180	300.920	667.54	-23.79	15.51	-23.75	1.46	
759.00	8.320	299.860	756.61	-34.95	22.05	-34.89	0.23	
849.00	11.770	297.660	845.22	-48.76	29.55	-48.67	3.86	
939.00	12.960	296.460	933.13	-65.95	38.31	-65.83	1.35	
1029.00	14.860	295.180	1020.48	-85.46	47.72	-85.32	2.14	
1119.00	16.020	293.530	1107.24	-107.32	57.59	-107.15	1.38	
1209.00	15.520	293.400	1193.85	-129.78	67.33	-129.58	0.56	
1299.00	16.250	294.840	1280.41	-152.29	77.40	-152.06	0.92	
1389.00	15.890	296.110	1366.89	-174.82	88.11	-174.55	0.56	
1479.00	15.440	296.170	1453.55	-196.66	98.82	-196.37	0.50	
1569.00	15.920	295.720	1540.20	-218.57	109.46	-218.24	0.55	
1659.00	15.830	295.580	1626.77	-240.79	120.11	-240.43	0.11	
1749.00	15.480	295.620	1713.43	-262.73	130.61	-262.33	0.39	
1781.00	15.540	295.180	1744.26	-270.47	134.28	-270.06	0.41	
1850.00	15.130	297.240	1810.81	-286.86	142.33	-286.44	0.99	
1942.00	15.480	305.870	1899.56	-307.53	155.02	-307.06	2.50	
2036.00	16.040	309.670	1990.03	-327.74	170.66	-327.22	1.25	
2129.00	16.070	305.000	2079.40	-348.22	186.25	-347.66	1.39	
2222.00	15.780	296.000	2168.85	-370.17	199.18	-369.57	2.67	
2314.00	15.770	296.710	2257.38	-392.61	210.28	-391.98	0.21	
2407.00	15.920	301.140	2346.85	-414.86	222.56	-414.19	1.31	
2500.00	16.040	304.060	2436.26	-436.46	236.35	-435.75	0.87	



Actual Wellpath Report

BOST FARM 1N-8C-L AWP

Page 3 of 10



REFERENCE WELLPATH IDENTIFICATION

Operator	SRC ENERGY	Slot	SLOT#39 BOST FARM 1N-8C-L (1337'FNL & 941'FWL, SEC.07)
Area	COLORADO	Well	BOST FARM 1N-8C-L
Field	WELD COUNTY (NAD83,TRUE NORTH)	Wellbore	BOST FARM 1N-8C-L AWB
Facility	SEC.07-T05N-R66W		

WELLPATH DATA (194 stations)

MD [ft]	Inclination [°]	Azimuth [°]	TVD [ft]	Vert Sect [ft]	North [ft]	East [ft]	DLS [°/100ft]	Comments
2593.00	15.930	301.060	2525.66	-458.08	250.13	-457.33	0.90	
2686.00	16.650	292.230	2614.94	-481.38	261.76	-480.60	2.77	
2778.00	15.950	277.160	2703.29	-506.16	268.32	-505.35	4.65	
2871.00	15.260	276.300	2792.86	-531.01	271.26	-530.20	0.78	
2964.00	15.040	292.280	2882.66	-554.37	277.18	-553.54	4.48	
3058.00	15.510	299.590	2973.35	-576.62	288.01	-575.75	2.11	
3150.00	15.470	302.470	3062.01	-597.70	300.67	-596.80	0.84	
3243.00	15.470	309.390	3151.65	-617.80	315.20	-616.85	1.98	
3336.00	15.490	312.420	3241.28	-636.60	331.45	-635.61	0.87	
3429.00	15.460	313.430	3330.91	-654.82	348.35	-653.78	0.29	
3522.00	15.120	312.210	3420.61	-672.86	365.02	-671.76	0.50	
3616.00	15.660	312.730	3511.24	-691.31	381.86	-690.16	0.59	
3709.00	15.470	302.610	3600.85	-711.02	397.07	-709.83	2.92	
3801.00	15.600	283.600	3689.55	-733.42	406.60	-732.21	5.51	
3894.00	15.660	274.760	3779.12	-758.10	410.58	-756.87	2.56	
3987.00	15.090	282.010	3868.80	-782.46	414.14	-781.23	2.15	
4080.00	15.640	292.600	3958.49	-805.91	421.48	-804.64	3.07	
4174.00	15.060	301.040	4049.15	-828.10	432.65	-826.81	2.45	
4266.00	15.830	308.200	4137.84	-848.25	446.57	-846.91	2.23	
4360.00	16.080	301.100	4228.22	-869.52	461.22	-868.14	2.09	
4455.00	16.050	287.350	4319.55	-893.36	471.94	-891.95	4.00	
4550.00	15.900	271.470	4410.92	-918.93	476.19	-917.50	4.59	
4642.00	15.710	269.000	4499.45	-943.98	476.30	-942.55	0.76	
4736.00	15.870	279.790	4589.92	-969.38	478.26	-967.95	3.12	
4830.00	15.970	284.550	4680.32	-994.58	483.70	-993.13	1.39	
4923.00	15.930	289.240	4769.74	-1019.04	491.12	-1017.57	1.39	
5017.00	15.950	293.800	4860.13	-1043.06	500.58	-1041.56	1.33	
5110.00	15.930	298.550	4949.56	-1066.00	511.84	-1064.47	1.40	
5203.00	16.100	303.360	5038.95	-1088.02	525.03	-1086.45	1.44	
5297.00	15.970	299.960	5129.30	-1110.15	538.65	-1108.54	1.01	



Actual Wellpath Report

BOST FARM 1N-8C-L AWP

Page 4 of 10



REFERENCE WELLPATH IDENTIFICATION

Operator	SRC ENERGY	Slot	SLOT#39 BOST FARM 1N-8C-L (1337'FNL & 941'FWL, SEC.07)
Area	COLORADO	Well	BOST FARM 1N-8C-L
Field	WELD COUNTY (NAD83,TRUE NORTH)	Wellbore	BOST FARM 1N-8C-L AWB
Facility	SEC.07-T05N-R66W		

WELLPATH DATA (194 stations)

MD [ft]	Inclination [°]	Azimuth [°]	TVD [ft]	Vert Sect [ft]	North [ft]	East [ft]	DLS [°/100ft]	Comments
5392.00	15.900	297.470	5220.65	-1133.06	551.18	-1131.41	0.72	
5486.00	15.800	298.470	5311.07	-1155.77	563.22	-1154.08	0.31	
5579.00	15.930	297.210	5400.53	-1178.28	575.09	-1176.56	0.40	
5671.00	15.860	291.040	5489.02	-1201.28	585.38	-1199.52	1.84	
5764.00	15.460	291.040	5578.57	-1224.73	594.39	-1222.95	0.43	
5858.00	16.040	295.090	5669.04	-1248.22	604.40	-1246.41	1.32	
5950.00	15.770	294.680	5757.52	-1271.12	615.01	-1269.28	0.32	
6042.00	15.850	295.820	5846.04	-1293.82	625.70	-1291.95	0.35	
6136.00	15.940	296.120	5936.44	-1317.00	636.97	-1315.09	0.13	
6228.00	15.930	291.410	6024.91	-1340.13	647.14	-1338.19	1.41	
6322.00	15.810	287.240	6115.33	-1364.39	655.65	-1362.43	1.22	
6415.00	15.940	281.930	6204.79	-1389.01	662.04	-1387.03	1.57	
6507.00	11.220	278.690	6294.20	-1410.24	666.01	-1408.25	5.19	
6600.00	6.770	338.770	6386.21	-1421.21	672.50	-1419.20	10.51	
6693.00	8.810	41.270	6478.49	-1418.53	682.98	-1416.48	8.87	
6786.00	14.120	64.060	6569.65	-1403.64	693.31	-1401.57	7.40	
6878.00	20.630	77.700	6657.44	-1377.70	701.68	-1375.60	8.30	
6972.00	28.320	87.170	6742.96	-1339.20	706.32	-1337.08	9.16	
7065.00	38.410	87.100	6820.53	-1288.19	708.88	-1286.06	10.85	
7157.00	49.270	84.540	6886.80	-1224.76	713.66	-1222.63	11.96	
7249.00	59.420	85.200	6940.35	-1150.43	720.30	-1148.27	11.05	
7342.00	65.290	90.670	6983.51	-1068.18	723.16	-1066.02	8.18	
7436.00	73.260	93.430	7016.76	-980.39	719.97	-978.24	8.91	
7529.00	82.160	93.970	7036.53	-889.79	714.10	-887.65	9.59	
7623.00	87.880	93.150	7044.69	-796.35	708.29	-794.23	6.15	LANDING POINT (643'FNL & 151'FWL, SEC.07)
7717.00	89.290	91.550	7047.01	-702.45	704.44	-700.34	2.27	
7810.00	89.290	88.390	7048.16	-609.47	704.49	-607.36	3.40	
7904.00	88.860	87.170	7049.68	-515.57	708.13	-513.44	1.38	
7996.00	88.800	87.880	7051.56	-423.68	712.10	-421.55	0.77	
8088.00	88.710	89.040	7053.56	-331.75	714.57	-329.60	1.26	



Actual Wellpath Report

BOST FARM 1N-8C-L AWP

Page 5 of 10



REFERENCE WELLPATH IDENTIFICATION

Operator	SRC ENERGY	Slot	SLOT#39 BOST FARM 1N-8C-L (1337'FNL & 941'FWL, SEC.07)
Area	COLORADO	Well	BOST FARM 1N-8C-L
Field	WELD COUNTY (NAD83,TRUE NORTH)	Wellbore	BOST FARM 1N-8C-L AWB
Facility	SEC.07-T05N-R66W		

WELLPATH DATA (194 stations)

MD [ft]	Inclination [°]	Azimuth [°]	TVD [ft]	Vert Sect [ft]	North [ft]	East [ft]	DLS [°/100ft]	Comments
8182.00	88.680	90.790	7055.70	-237.78	714.71	-235.63	1.86	
8274.00	88.950	91.970	7057.60	-145.82	712.50	-143.68	1.32	
8366.00	88.920	92.120	7059.31	-53.88	709.21	-51.76	0.17	
8459.00	88.980	91.570	7061.02	39.06	706.22	41.18	0.59	
8551.00	88.800	90.970	7062.80	131.03	704.18	133.14	0.68	
8645.00	89.290	90.380	7064.36	225.01	703.07	227.12	0.82	
8738.00	88.920	88.290	7065.82	317.98	704.15	320.10	2.28	
8831.00	88.890	86.750	7067.59	410.86	708.18	412.99	1.66	
8925.00	88.890	86.500	7069.42	504.66	713.71	506.81	0.27	
9019.00	88.830	86.610	7071.29	598.46	719.36	600.62	0.13	
9112.00	89.110	86.790	7072.96	691.27	724.71	693.45	0.36	
9204.00	88.950	88.190	7074.51	783.16	728.74	785.35	1.53	
9298.00	88.000	89.420	7077.02	877.09	730.70	879.29	1.65	
9390.00	86.030	90.260	7081.81	968.96	730.95	971.16	2.33	
9483.00	86.060	91.530	7088.22	1061.73	729.51	1063.93	1.36	
9576.00	86.240	94.040	7094.47	1154.42	725.00	1156.60	2.70	
9669.00	86.640	94.530	7100.24	1247.00	718.06	1249.16	0.68	
9762.00	86.490	92.200	7105.81	1339.68	712.61	1341.83	2.51	
9855.00	86.550	91.810	7111.46	1432.46	709.37	1434.60	0.42	
9948.00	86.490	91.860	7117.11	1525.25	706.39	1527.38	0.08	
10041.00	86.550	92.120	7122.75	1618.03	703.17	1620.15	0.29	
10134.00	86.550	92.750	7128.35	1710.79	699.23	1712.90	0.68	
10229.00	86.610	91.080	7134.01	1805.57	696.06	1807.67	1.76	
10323.00	86.670	89.690	7139.52	1899.41	695.43	1901.51	1.48	
10415.00	86.610	87.730	7144.92	1991.22	697.49	1993.32	2.13	
10509.00	86.580	88.290	7150.50	2084.98	700.75	2087.10	0.60	
10603.00	86.610	87.810	7156.08	2178.75	703.94	2180.88	0.51	
10696.00	86.700	87.260	7161.51	2271.50	707.94	2273.63	0.60	
10790.00	86.490	86.560	7167.09	2365.18	713.00	2367.33	0.78	
10883.00	86.490	86.310	7172.79	2457.81	718.77	2459.98	0.27	



Actual Wellpath Report

BOST FARM 1N-8C-L AWP

Page 6 of 10



REFERENCE WELLPATH IDENTIFICATION

Operator	SRC ENERGY	Slot	SLOT#39 BOST FARM 1N-8C-L (1337'FNL & 941'FWL, SEC.07)
Area	COLORADO	Well	BOST FARM 1N-8C-L
Field	WELD COUNTY (NAD83,TRUE NORTH)	Wellbore	BOST FARM 1N-8C-L AWB
Facility	SEC.07-T05N-R66W		

WELLPATH DATA (194 stations)

MD [ft]	Inclination [°]	Azimuth [°]	TVD [ft]	Vert Sect [ft]	North [ft]	East [ft]	DLS [°/100ft]	Comments
10977.00	86.400	86.710	7178.61	2551.43	724.48	2553.62	0.44	
11071.00	86.430	90.210	7184.49	2645.19	727.00	2647.39	3.72	
11165.00	86.460	92.560	7190.32	2738.98	724.73	2741.17	2.50	
11258.00	86.330	87.560	7196.17	2831.77	724.63	2833.96	5.37	
11351.00	86.490	86.490	7202.00	2924.45	729.45	2926.65	1.16	
11445.00	86.370	89.170	7207.85	3018.18	733.00	3020.39	2.85	
11538.00	86.520	92.560	7213.62	3110.98	731.60	3113.19	3.64	
11631.00	86.430	93.330	7219.34	3203.69	726.83	3205.89	0.83	
11724.00	86.430	94.270	7225.13	3296.33	720.68	3298.50	1.01	
11818.00	86.550	100.240	7230.89	3389.39	708.84	3391.53	6.34	
11910.00	86.520	102.210	7236.45	3479.51	690.96	3481.60	2.14	
12002.00	86.520	97.470	7242.04	3570.01	675.27	3572.06	5.14	
12095.00	86.430	88.540	7247.77	3662.63	670.41	3664.66	9.58	
12188.00	86.400	87.710	7253.58	3755.39	673.45	3757.43	0.89	
12281.00	86.360	87.460	7259.46	3848.11	677.36	3850.16	0.27	
12373.00	86.580	87.440	7265.12	3939.83	681.45	3941.89	0.24	
12467.00	86.520	86.120	7270.78	4033.49	686.72	4035.57	1.40	
12561.00	86.980	85.520	7276.11	4127.07	693.56	4129.17	0.80	
12655.00	86.670	85.030	7281.31	4220.58	701.29	4222.71	0.62	
12748.00	87.130	85.250	7286.34	4313.09	709.16	4315.24	0.55	
12841.00	87.750	86.850	7290.50	4405.75	715.56	4407.92	1.84	
12934.00	90.090	89.110	7292.25	4498.66	718.83	4500.83	3.50	
13029.00	90.090	89.390	7292.10	4593.64	720.08	4595.83	0.29	
13123.00	90.000	89.970	7292.03	4687.64	720.60	4689.82	0.62	
13215.00	89.910	89.090	7292.10	4779.63	721.35	4781.82	0.96	
13307.00	90.490	91.610	7291.78	4871.62	720.79	4873.81	2.81	
13402.00	89.570	94.170	7291.73	4966.51	716.00	4968.68	2.86	
13495.00	89.600	92.990	7292.40	5059.34	710.20	5061.49	1.27	
13589.00	89.450	92.630	7293.18	5153.24	705.59	5155.38	0.41	
13683.00	89.630	92.430	7293.93	5247.15	701.44	5249.28	0.29	



Actual Wellpath Report

BOST FARM 1N-8C-L AWP

Page 7 of 10



REFERENCE WELLPATH IDENTIFICATION

Operator	SRC ENERGY	Slot	SLOT#39 BOST FARM 1N-8C-L (1337'FNL & 941'FWL, SEC.07)
Area	COLORADO	Well	BOST FARM 1N-8C-L
Field	WELD COUNTY (NAD83,TRUE NORTH)	Wellbore	BOST FARM 1N-8C-L AWB
Facility	SEC.07-T05N-R66W		

WELLPATH DATA (194 stations)

MD [ft]	Inclination [°]	Azimuth [°]	TVD [ft]	Vert Sect [ft]	North [ft]	East [ft]	DLS [°/100ft]	Comments
13776.00	89.820	92.070	7294.38	5340.09	697.79	5342.21	0.44	
13869.00	89.540	90.430	7294.90	5433.07	695.76	5435.18	1.79	
13963.00	90.030	89.030	7295.25	5527.06	696.20	5529.18	1.58	
14056.00	89.850	88.260	7295.35	5620.03	698.40	5622.15	0.85	
14150.00	89.880	89.630	7295.57	5714.01	700.13	5716.13	1.46	
14244.00	90.090	90.080	7295.60	5808.00	700.37	5810.13	0.53	
14338.00	90.310	90.210	7295.27	5902.00	700.13	5904.13	0.27	
14430.00	89.940	90.280	7295.07	5994.00	699.74	5996.13	0.41	
14523.00	89.910	90.680	7295.19	6087.00	698.96	6089.13	0.43	
14615.00	89.570	87.070	7295.61	6178.96	700.77	6181.09	3.94	
14708.00	89.690	85.490	7296.21	6271.74	706.80	6273.89	1.70	
14802.00	89.660	87.420	7296.74	6365.54	712.61	6367.71	2.05	
14896.00	89.720	88.070	7297.25	6459.45	716.31	6461.63	0.69	
14990.00	89.750	89.990	7297.68	6553.43	717.90	6555.61	2.04	
15082.00	89.720	90.860	7298.11	6645.43	717.22	6647.61	0.95	
15175.00	89.880	92.100	7298.43	6738.40	714.82	6740.58	1.34	
15269.00	89.750	90.790	7298.74	6832.37	712.45	6834.54	1.40	
15361.00	89.630	90.760	7299.24	6924.37	711.20	6926.53	0.13	
15454.00	89.780	89.450	7299.71	7017.36	711.03	7019.53	1.42	
15546.00	89.660	88.460	7300.16	7109.34	712.71	7111.51	1.08	
15639.00	89.940	88.600	7300.49	7202.30	715.10	7204.48	0.34	
15731.00	89.880	89.790	7300.63	7294.29	716.39	7296.47	1.30	
15824.00	90.120	90.880	7300.63	7387.28	715.84	7389.47	1.20	
15917.00	90.000	91.890	7300.54	7480.26	713.60	7482.44	1.09	
16010.00	89.780	91.600	7300.71	7573.23	710.76	7575.39	0.39	
16105.00	90.060	91.820	7300.85	7668.19	707.93	7670.35	0.37	
16198.00	90.120	92.240	7300.70	7761.14	704.64	7763.29	0.46	
16293.00	90.030	92.140	7300.58	7856.08	701.00	7858.22	0.14	
16385.00	89.970	92.450	7300.58	7948.02	697.32	7950.15	0.34	
16478.00	90.030	93.330	7300.58	8040.92	692.63	8043.03	0.95	



Actual Wellpath Report

BOST FARM 1N-8C-L AWP

Page 8 of 10



REFERENCE WELLPATH IDENTIFICATION

Operator	SRC ENERGY	Slot	SLOT#39 BOST FARM 1N-8C-L (1337'FNL & 941'FWL, SEC.07)
Area	COLORADO	Well	BOST FARM 1N-8C-L
Field	WELD COUNTY (NAD83,TRUE NORTH)	Wellbore	BOST FARM 1N-8C-L AWB
Facility	SEC.07-T05N-R66W		

WELLPATH DATA (194 stations)

MD [ft]	Inclination [°]	Azimuth [°]	TVD [ft]	Vert Sect [ft]	North [ft]	East [ft]	DLS [°/100ft]	Comments
16571.00	89.940	90.930	7300.60	8133.85	689.18	8135.96	2.58	
16664.00	90.090	91.610	7300.58	8226.84	687.11	8228.94	0.75	
16757.00	90.000	89.360	7300.50	8319.83	686.33	8321.93	2.42	
16849.00	90.150	86.260	7300.38	8411.74	689.84	8413.85	3.37	
16943.00	90.120	87.700	7300.16	8505.59	694.79	8507.72	1.53	
17038.00	89.970	90.620	7300.09	8600.57	696.19	8602.69	3.08	
17133.00	90.250	89.740	7299.90	8695.56	695.89	8697.69	0.97	
17225.00	89.720	90.000	7299.93	8787.56	696.10	8789.69	0.64	
17318.00	89.780	88.330	7300.33	8880.54	697.45	8882.68	1.80	
17410.00	89.850	91.220	7300.63	8972.53	697.81	8974.67	3.14	
17503.00	89.630	90.860	7301.05	9065.52	696.13	9067.65	0.45	
17595.00	89.690	91.180	7301.60	9157.51	694.49	9159.63	0.35	
17651.00	89.720	91.520	7301.89	9213.50	693.17	9215.62	0.61	LAST BH SURVEY (602'FNL & 408'FEL, SEC.08)
17675.00	89.720	91.520	7302.01	9237.49	692.53	9239.61	0.00	PROJ TO BIT (603'FNL & 384'FEL, SEC.08)

HOLE & CASING SECTIONS - Ref Wellbore: BOST FARM 1N-8C-L AWB Ref Wellpath: BOST FARM 1N-8C-L AWP

String/Diameter	Start MD [ft]	End MD [ft]	Interval [ft]	Start TVD [ft]	End TVD [ft]	Start N/S [ft]	Start E/W [ft]	End N/S [ft]	End E/W [ft]
13.5in Open Hole	20.00	1831.00	1811.00	20.00	1792.47	0.00	0.00	140.08	-282.00
9.625in Casing Surface	20.00	1831.00	1811.00	20.00	1792.47	0.00	0.00	140.08	-282.00
8.5in Open Hole	1831.00	17675.00	15844.00	1792.47	7302.01	140.08	-282.00	692.53	9239.61



Actual Wellpath Report

BOST FARM 1N-8C-L AWP

Page 9 of 10



REFERENCE WELLPATH IDENTIFICATION

Operator	SRC ENERGY	Slot	SLOT#39 BOST FARM 1N-8C-L (1337'FNL & 941'FWL, SEC.07)
Area	COLORADO	Well	BOST FARM 1N-8C-L
Field	WELD COUNTY (NAD83,TRUE NORTH)	Wellbore	BOST FARM 1N-8C-L AWB
Facility	SEC.07-T05N-R66W		

TARGETS

Name	TVD [ft]	North [ft]	East [ft]	Grid East [US ft]	Grid North [US ft]	Latitude	Longitude	Shape
SEC.07-T05N-R66W	25.00	-1468.58	323.87	3187161.59	1394309.79	40°24'49.806"N	104°49'40.249"W	polygon
SEC.08-T05N-R66W	25.00	-1468.58	323.87	3187161.59	1394309.79	40°24'49.806"N	104°49'40.249"W	polygon
BOST FARM 1N-8C-L TOP OF PROD REV-1 (612'FNL & 150'FWL, SEC.07)	7048.34	739.44	-794.94	3186026.15	1396509.19	40°25'11.625"N	104°49'54.714"W	point
BOST FARM 1N-8C-L TOP OF PROD ON PLAT (562'FNL & 150'FWL, SEC.07)	7067.00	789.44	-794.94	3186025.77	1396559.19	40°25'12.119"N	104°49'54.714"W	point
BOST FARM 1N-8C-L BHL ON PLAT (525'FNL & 460'FEL, SEC.08)	7286.00	769.63	9164.01	3195984.18	1396614.74	40°25'11.906"N	104°47'45.953"W	point
BOST FARM 1N-8C-L HARDLINE BOX	7286.00	0.00	0.00	3186826.63	1395775.82	40°25'04.318"N	104°49'44.436"W	polygon
BOST FARM 1N-8C-L BHL REV-1 (585'FNL & 460'FEL, SEC.08)	7302.29	709.63	9163.99	3195984.62	1396554.74	40°25'11.314"N	104°47'45.953"W	point

WELLPATH COMPOSITION - Ref Wellbore: BOST FARM 1N-8C-L AWB Ref Wellpath: BOST FARM 1N-8C-L AWP

Start MD [ft]	End MD [ft]	Positional Uncertainty Model	Log Name/Comment	Wellbore
20.00	1781.00	BHI NaviTrak (Standard)	13 1/2" SURFACE SECTION <121-1765>	BOST FARM 1N-8C-L AWB
1781.00	17651.00	BHI AutoTrak Curve (MagCAD+IFR1, Short spacing)	8 1/2" MONOBORE SURVEYS <1850-17651>	BOST FARM 1N-8C-L AWB
17651.00	17675.00	Blind Drilling (std)	Projection to bit	BOST FARM 1N-8C-L AWB



Actual Wellpath Report

BOST FARM 1N-8C-L AWP

Page 10 of 10



REFERENCE WELLPATH IDENTIFICATION			
Operator	SRC ENERGY	Slot	SLOT#39 BOST FARM 1N-8C-L (1337'FNL & 941'FWL, SEC.07)
Area	COLORADO	Well	BOST FARM 1N-8C-L
Field	WELD COUNTY (NAD83,TRUE NORTH)	Wellbore	BOST FARM 1N-8C-L AWB
Facility	SEC.07-T05N-R66W		

WELLPATH COMMENTS				
MD [ft]	Inclination [°]	Azimuth [°]	TVD [ft]	Comment
7623.00	87.880	93.150	7044.69	LANDING POINT (643'FNL & 151'FWL, SEC.07)
17651.00	89.720	91.520	7301.89	LAST BH SURVEY (602'FNL & 408'FEL, SEC.08)
17675.00	89.720	91.520	7302.01	PROJ TO BIT (603'FNL & 384'FEL, SEC.08)