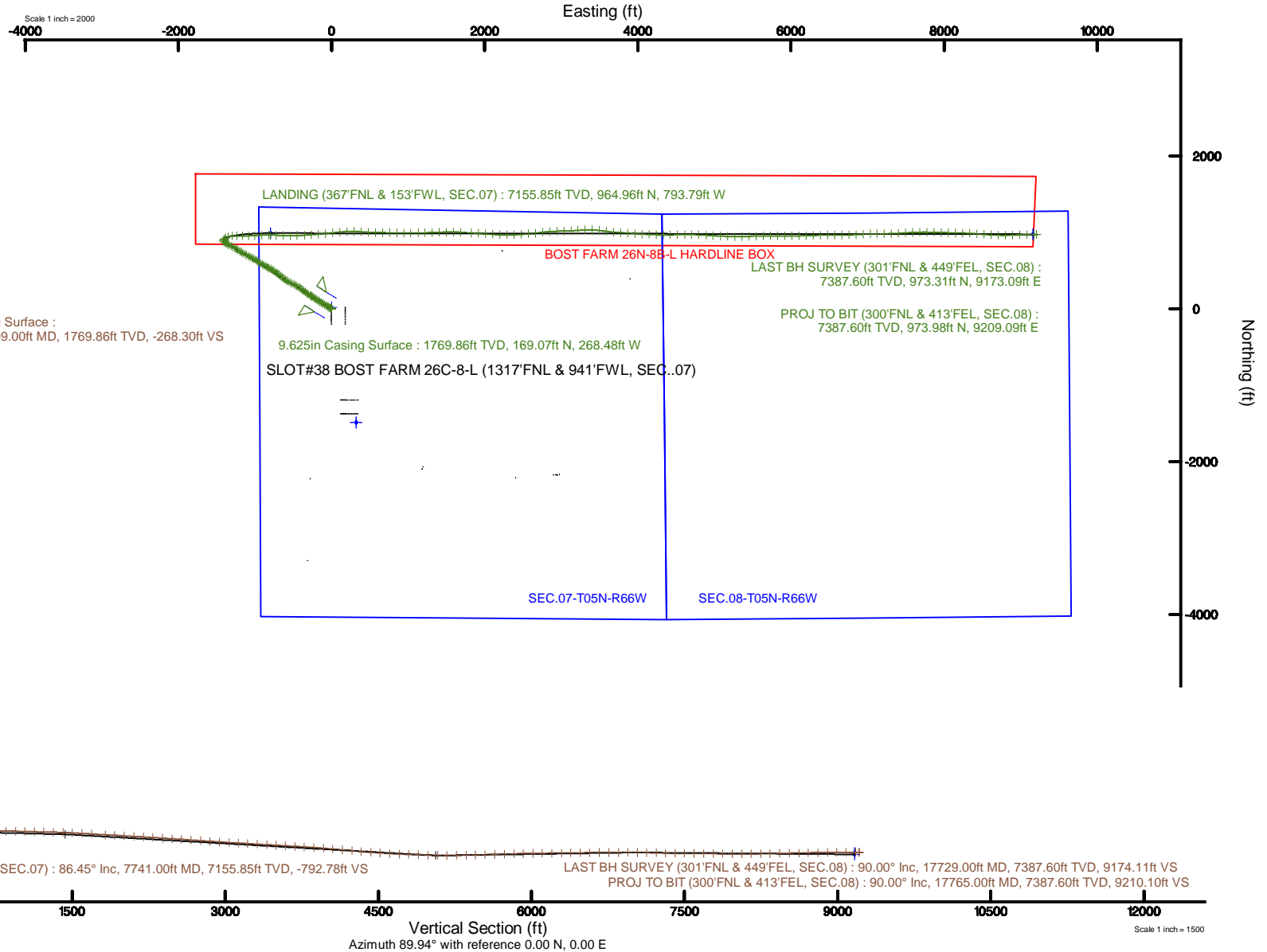


SRC ENERGY

Location: COLORADO Slot: SLOT#38 BOST FARM 26C-8-L (1317'FNL & 941'FWL, SEC..07)
 Field: WELD COUNTY (NAD83,TRUE NORTH) Well: BOST FARM 26C-8-L
 Facility: SEC.07-T05N-R66W Wellbore: BOST FARM 26C-8-L PWB

Plot reference wellpath is BOST FARM 26C-8-L (REV-B.0) FWP	Grid System: NAD83 / Lambert Colorado SP, Northern Zone (501), US feet
True vertical depths are referenced to PRECISION 462 (20) (RKB)	North Reference: True north
Measured depths are referenced to PRECISION 462 (20) (RKB)	Scale: True distance
PRECISION 462 (20) (RKB) to Mean Sea Level: 4901 feet	Depths are in feet
Mean Sea Level to Mud line (At Slot: SLOT#38 BOST FARM 26C-8-L (1317'FNL & 941'FWL, SEC..07)): 0 feet	Created by: haniab on 2019-02-04
Coordinates are in feet referenced to Slot	Database: WellArchitectDB





Actual Wellpath Report

BOST FARM 26C-8-L AWP

Page 1 of 10



REFERENCE WELLPATH IDENTIFICATION			
Operator	SRC ENERGY	Slot	SLOT#38 BOST FARM 26C-8-L (1317'FNL & 941'FWL, SEC..07)
Area	COLORADO	Well	BOST FARM 26C-8-L
Field	WELD COUNTY (NAD83,TRUE NORTH)	Wellbore	BOST FARM 26C-8-L AWB
Facility	SEC.07-T05N-R66W		

REPORT SETUP INFORMATION			
Projection System	NAD83 / Lambert Colorado SP, Northern Zone (501), US feet	Software System	WellArchitect® 5.1
North Reference	True	User	Hanisab
Scale	0.999961	Report Generated	2/4/2019 at 9:32:44 PM
Convergence at slot	0.43° East	Database/Source file	WellArchitectDB/BOST_FARM_26C-8-L_AWP.xml

WELLPATH LOCATION						
	Local coordinates		Grid coordinates		Geographic coordinates	
	North[ft]	East[ft]	Easting[US ft]	Northing[US ft]	Latitude	Longitude
Slot Location	1488.63	-323.54	3186826.79	1395795.86	40°25'04.516"N	104°49'44.432"W
Facility Reference Pt			3187161.59	1394309.79	40°24'49.806"N	104°49'40.249"W
Field Reference Pt			3171284.48	1426358.81	40°30'07.643"N	104°53'02.634"W

WELLPATH DATUM			
Calculation method	Minimum curvature	PRECISION 462 (20') (RKB) to Facility Vertical Datum	4901.00ft
Horizontal Reference Pt	Slot	PRECISION 462 (20') (RKB) to Mean Sea Level	4901.00ft
Vertical Reference Pt	PRECISION 462 (20') (RKB)	PRECISION 462 (20') (RKB) to Mud Line at Slot (SLOT#38 BOST FARM 26C-8-L (1317'FNL & 941'FWL, SEC..07))	4901.00ft
MD Reference Pt	PRECISION 462 (20') (RKB)	Section Origin	N 0.00, E 0.00 ft
Field Vertical Reference	Mean Sea Level	Section Azimuth	89.94°



Actual Wellpath Report

BOST FARM 26C-8-L AWP

Page 2 of 10



REFERENCE WELLPATH IDENTIFICATION

Operator	SRC ENERGY	Slot	SLOT#38 BOST FARM 26C-8-L (1317'FNL & 941'FWL, SEC..07)
Area	COLORADO	Well	BOST FARM 26C-8-L
Field	WELD COUNTY (NAD83,TRUE NORTH)	Wellbore	BOST FARM 26C-8-L AWP
Facility	SEC.07-T05N-R66W		

WELLPATH DATA (195 stations) † = interpolated/extrapolated station

MD [ft]	Inclination [°]	Azimuth [°]	TVD [ft]	Vert Sect [ft]	North [ft]	East [ft]	DLS [°/100ft]	Comments
0.00†	0.000	200.970	0.00	0.00	0.00	0.00	0.00	
20.00	0.000	200.970	20.00	0.00	0.00	0.00	0.00	
137.00	0.170	200.970	137.00	-0.06	-0.16	-0.06	0.15	
226.00	0.150	291.100	226.00	-0.22	-0.24	-0.22	0.26	
309.00	0.970	334.030	309.00	-0.63	0.43	-0.63	1.04	
399.00	2.790	310.850	398.94	-2.62	2.55	-2.62	2.15	
489.00	5.620	298.810	488.69	-8.13	6.10	-8.14	3.28	
579.00	6.390	300.360	578.20	-16.31	10.76	-16.32	0.87	
669.00	8.120	302.230	667.48	-26.00	16.68	-26.02	1.94	
759.00	8.990	302.290	756.47	-37.32	23.83	-37.34	0.97	
849.00	12.240	300.170	844.92	-51.50	32.38	-51.54	3.64	
939.00	14.550	300.520	932.47	-69.48	42.92	-69.53	2.57	
1029.00	14.280	300.270	1019.63	-88.79	54.25	-88.85	0.31	
1119.00	15.150	301.010	1106.68	-108.45	65.91	-108.52	0.99	
1209.00	15.950	302.810	1193.39	-128.91	78.67	-128.99	1.04	
1299.00	16.010	302.970	1279.91	-149.70	92.12	-149.80	0.08	
1389.00	15.620	303.640	1366.50	-170.19	105.59	-170.30	0.48	
1479.00	15.370	303.630	1453.23	-190.19	118.91	-190.32	0.28	
1569.00	15.700	302.850	1539.94	-210.34	132.12	-210.48	0.43	
1659.00	16.150	302.560	1626.49	-231.10	145.46	-231.26	0.51	
1749.00	17.380	302.250	1712.66	-253.01	159.37	-253.17	1.37	
1761.00	17.520	302.290	1724.11	-256.05	161.29	-256.22	1.17	
1850.00	17.870	302.690	1808.90	-278.85	175.82	-279.03	0.42	
1942.00	16.330	301.960	1896.83	-301.69	190.29	-301.89	1.69	
2036.00	16.210	304.850	1987.07	-323.65	204.78	-323.87	0.87	
2129.00	16.510	308.500	2076.30	-344.63	220.43	-344.86	1.15	
2222.00	15.930	306.950	2165.60	-365.16	236.33	-365.40	0.78	
2314.00	16.180	306.610	2254.01	-385.52	251.56	-385.78	0.29	
2406.00	16.020	307.680	2342.40	-405.84	266.96	-406.12	0.37	
2499.00	15.940	305.960	2431.81	-426.32	282.31	-426.61	0.52	



Actual Wellpath Report

BOST FARM 26C-8-L AWP

Page 3 of 10



REFERENCE WELLPATH IDENTIFICATION

Operator	SRC ENERGY	Slot	SLOT#38 BOST FARM 26C-8-L (1317'FNL & 941'FWL, SEC..07)
Area	COLORADO	Well	BOST FARM 26C-8-L
Field	WELD COUNTY (NAD83,TRUE NORTH)	Wellbore	BOST FARM 26C-8-L AWB
Facility	SEC.07-T05N-R66W		

WELLPATH DATA (195 stations)

MD [ft]	Inclination [°]	Azimuth [°]	TVD [ft]	Vert Sect [ft]	North [ft]	East [ft]	DLS [°/100ft]	Comments
2592.00	16.090	304.100	2521.20	-447.31	297.03	-447.62	0.57	
2686.00	16.160	298.680	2611.51	-469.56	310.61	-469.88	1.60	
2778.00	16.080	292.370	2699.90	-492.56	321.61	-492.90	1.91	
2871.00	15.680	291.350	2789.35	-516.17	331.08	-516.52	0.52	
2964.00	16.140	297.600	2878.79	-539.32	341.65	-539.68	1.91	
3058.00	15.950	300.270	2969.13	-562.04	354.21	-562.41	0.81	
3150.00	16.270	301.920	3057.52	-583.88	367.40	-584.27	0.61	
3243.00	16.090	306.370	3146.84	-605.30	381.93	-605.70	1.35	
3336.00	15.780	307.290	3236.27	-625.72	397.23	-626.14	0.43	
3428.00	16.150	309.400	3324.72	-645.55	412.93	-645.98	0.75	
3522.00	16.110	309.360	3415.02	-665.72	429.50	-666.17	0.04	
3615.00	15.790	309.190	3504.44	-685.48	445.68	-685.95	0.35	
3709.00	16.050	309.830	3594.83	-705.36	462.09	-705.84	0.33	
3801.00	16.290	307.020	3683.20	-725.41	478.00	-725.91	0.89	
3894.00	16.170	304.020	3772.49	-746.54	493.10	-747.06	0.91	
3987.00	16.160	301.530	3861.81	-768.29	507.11	-768.82	0.75	
4080.00	15.840	298.010	3951.21	-790.51	519.84	-791.06	1.10	
4173.00	16.170	297.880	4040.61	-813.15	531.86	-813.71	0.36	
4266.00	16.180	300.420	4129.93	-835.76	544.47	-836.33	0.76	
4360.00	16.070	300.000	4220.23	-858.31	557.61	-858.89	0.17	
4455.00	16.130	300.520	4311.50	-881.05	570.89	-881.65	0.16	
4549.00	16.240	300.450	4401.78	-903.62	584.18	-904.23	0.12	
4642.00	16.100	300.150	4491.10	-925.96	597.25	-926.59	0.18	
4736.00	16.060	304.240	4581.43	-947.97	611.11	-948.61	1.21	
4830.00	16.020	303.300	4671.77	-969.54	625.55	-970.20	0.28	
4923.00	16.210	301.910	4761.11	-991.27	639.45	-991.94	0.46	
5017.00	16.340	300.050	4851.35	-1013.84	653.01	-1014.53	0.57	
5109.00	16.080	298.210	4939.69	-1036.26	665.51	-1036.96	0.63	
5203.00	16.420	298.980	5029.93	-1059.34	678.10	-1060.05	0.43	
5297.00	16.280	298.800	5120.13	-1082.50	690.89	-1083.22	0.16	



Actual Wellpath Report

BOST FARM 26C-8-L AWP

Page 4 of 10



REFERENCE WELLPATH IDENTIFICATION

Operator	SRC ENERGY	Slot	SLOT#38 BOST FARM 26C-8-L (1317'FNL & 941'FWL, SEC..07)
Area	COLORADO	Well	BOST FARM 26C-8-L
Field	WELD COUNTY (NAD83,TRUE NORTH)	Wellbore	BOST FARM 26C-8-L AWB
Facility	SEC.07-T05N-R66W		

WELLPATH DATA (195 stations) † = interpolated/extrapolated station

MD [ft]	Inclination [°]	Azimuth [°]	TVD [ft]	Vert Sect [ft]	North [ft]	East [ft]	DLS [°/100ft]	Comments
5392.00	16.220	297.280	5211.34	-1105.94	703.38	-1106.68	0.45	
5486.00	16.250	296.370	5301.59	-1129.38	715.24	-1130.13	0.27	
5579.00	16.210	298.740	5390.88	-1152.41	727.26	-1153.17	0.71	
5671.00	16.310	299.620	5479.20	-1174.89	739.82	-1175.66	0.29	
5764.00	16.240	305.450	5568.48	-1196.82	753.82	-1197.61	1.76	
5857.00	16.380	304.850	5657.74	-1218.16	768.86	-1218.96	0.24	
5950.00	16.310	303.060	5746.98	-1239.85	783.47	-1240.67	0.55	
6042.00	16.380	299.250	5835.27	-1261.98	796.86	-1262.82	1.17	
6136.00	16.190	297.410	5925.50	-1285.17	809.37	-1286.01	0.58	
6228.00	16.310	297.710	6013.82	-1307.98	821.28	-1308.84	0.16	
6322.00	16.190	297.070	6104.07	-1331.32	833.38	-1332.19	0.23	
6415.00	16.030	297.280	6193.41	-1354.26	845.17	-1355.15	0.18	
6507.00	15.660	298.280	6281.92	-1376.48	856.87	-1377.37	0.50	
6600.00	15.110	306.250	6371.59	-1397.29	869.99	-1398.20	2.35	
6693.00	9.030	343.160	6462.62	-1409.20	884.17	-1410.12	10.26	
6785.00	9.120	15.740	6553.53	-1409.29	898.11	-1410.24	5.51	
6878.00	12.180	41.670	6644.97	-1400.75	912.55	-1401.71	6.03	
6972.00	19.330	57.340	6735.42	-1381.01	928.38	-1381.98	8.79	
7064.00	29.220	71.930	6819.25	-1346.71	943.61	-1347.70	12.50	
7157.00	37.290	85.530	6897.07	-1296.88	952.87	-1297.88	11.77	
7249.00	46.730	90.520	6965.37	-1235.45	954.75	-1236.45	10.88	
7341.00	55.650	89.850	7022.97	-1163.83	954.54	-1164.83	9.71	
7435.00	60.900	88.670	7072.38	-1083.91	955.60	-1084.92	5.69	
7528.00	67.800	87.570	7112.62	-1000.17	958.37	-1001.18	7.50	
7623.00	77.770	87.190	7140.70	-909.64	962.52	-910.64	10.50	
7716.00	85.620	89.700	7154.12	-817.72	965.00	-818.73	8.85	
7741.00†	86.449	90.457	7155.85	-792.78	964.96	-793.79	4.49	LANDING (367'FNL & 153'FWL, SEC.07)
7810.00	88.740	92.540	7158.75	-723.88	963.16	-724.89	4.49	
7903.00	88.520	91.690	7160.97	-630.97	959.73	-631.98	0.94	
7996.00	88.770	90.240	7163.17	-538.01	958.16	-539.02	1.58	



Actual Wellpath Report

BOST FARM 26C-8-L AWP

Page 5 of 10



REFERENCE WELLPATH IDENTIFICATION

Operator	SRC ENERGY	Slot	SLOT#38 BOST FARM 26C-8-L (1317'FNL & 941'FWL, SEC..07)
Area	COLORADO	Well	BOST FARM 26C-8-L
Field	WELD COUNTY (NAD83,TRUE NORTH)	Wellbore	BOST FARM 26C-8-L AWB
Facility	SEC.07-T05N-R66W		

WELLPATH DATA (195 stations)

MD [ft]	Inclination [°]	Azimuth [°]	TVD [ft]	Vert Sect [ft]	North [ft]	East [ft]	DLS [°/100ft]	Comments
8088.00	88.710	88.700	7165.19	-446.04	959.01	-447.05	1.67	
8182.00	88.710	86.300	7167.31	-352.16	963.11	-353.17	2.55	
8274.00	89.480	85.920	7168.76	-260.38	969.35	-261.39	0.93	
8366.00	89.630	85.060	7169.48	-168.66	976.58	-169.68	0.95	
8459.00	89.510	84.390	7170.17	-76.05	985.13	-77.08	0.73	
8551.00	89.320	84.090	7171.11	15.49	994.37	14.45	0.39	
8645.00	89.480	84.040	7172.10	109.00	1004.09	107.94	0.18	
8738.00	89.450	87.340	7172.97	201.72	1011.07	200.66	3.55	
8831.00	89.450	91.490	7173.86	294.69	1012.02	293.63	4.46	
8925.00	89.480	94.100	7174.74	388.57	1007.44	387.51	2.78	
9019.00	89.350	92.890	7175.70	482.38	1001.71	481.33	1.29	
9112.00	89.480	91.490	7176.65	575.30	998.16	574.25	1.51	
9204.00	89.510	90.860	7177.46	667.27	996.27	666.23	0.69	
9297.00	89.350	91.060	7178.38	760.25	994.71	759.21	0.28	
9390.00	89.510	91.660	7179.31	853.22	992.51	852.18	0.67	
9483.00	88.550	90.460	7180.88	946.19	990.78	945.15	1.65	
9575.00	88.680	89.060	7183.11	1038.16	991.17	1037.12	1.53	
9669.00	88.550	88.700	7185.38	1132.11	993.01	1131.07	0.41	
9762.00	88.580	88.950	7187.71	1225.07	994.91	1224.03	0.27	
9855.00	88.550	87.330	7190.04	1317.99	997.93	1316.94	1.74	
9948.00	88.460	88.430	7192.46	1410.90	1001.37	1409.85	1.19	
10041.00	86.550	88.270	7196.51	1503.77	1004.04	1502.72	2.06	
10133.00	86.610	90.830	7202.00	1595.59	1004.77	1594.54	2.78	
10228.00	86.610	93.850	7207.62	1690.33	1000.89	1689.29	3.17	
10365.00	86.800	93.490	7215.49	1826.82	992.14	1825.78	0.30	
10457.00	86.610	92.730	7220.78	1918.52	987.16	1917.49	0.85	
10551.00	86.670	94.330	7226.29	2012.17	981.38	2011.15	1.70	
10646.00	86.770	94.750	7231.73	2106.71	973.87	2105.69	0.45	
10739.00	86.730	92.210	7237.00	2199.38	968.24	2198.37	2.73	
10831.00	86.670	89.810	7242.30	2291.20	966.62	2290.19	2.61	



Actual Wellpath Report

BOST FARM 26C-8-L AWP

Page 6 of 10



REFERENCE WELLPATH IDENTIFICATION

Operator	SRC ENERGY	Slot	SLOT#38 BOST FARM 26C-8-L (1317'FNL & 941'FWL, SEC..07)
Area	COLORADO	Well	BOST FARM 26C-8-L
Field	WELD COUNTY (NAD83,TRUE NORTH)	Wellbore	BOST FARM 26C-8-L AWB
Facility	SEC.07-T05N-R66W		

WELLPATH DATA (195 stations)

MD [ft]	Inclination [°]	Azimuth [°]	TVD [ft]	Vert Sect [ft]	North [ft]	East [ft]	DLS [°/100ft]	Comments
10926.00	86.150	87.890	7248.25	2385.99	968.52	2384.98	2.09	
11020.00	86.300	86.320	7254.43	2479.67	973.26	2478.66	1.67	
11113.00	86.270	85.180	7260.46	2572.23	980.13	2571.20	1.22	
11207.00	86.150	83.260	7266.67	2665.55	989.58	2664.52	2.04	
11300.00	86.120	83.340	7272.94	2757.72	1000.41	2756.67	0.09	
11394.00	86.180	85.410	7279.26	2851.06	1009.60	2850.00	2.20	
11487.00	86.020	87.540	7285.58	2943.67	1015.30	2942.61	2.29	
11581.00	86.770	89.960	7291.49	3037.45	1017.35	3036.39	2.69	
11674.00	86.790	86.190	7296.72	3130.24	1020.47	3129.17	4.05	
11766.00	86.610	85.080	7302.02	3221.83	1027.46	3220.75	1.22	
11859.00	86.580	88.220	7307.54	3314.50	1032.88	3313.42	3.37	
11952.00	86.610	91.900	7313.07	3407.32	1032.78	3406.24	3.95	
12045.00	86.610	96.890	7318.57	3499.85	1025.67	3498.77	5.36	
12137.00	86.730	98.420	7323.91	3590.86	1013.44	3589.80	1.67	
12231.00	86.610	95.070	7329.37	3684.02	1002.42	3682.98	3.56	
12323.00	86.300	93.320	7335.06	3775.59	995.70	3774.55	1.93	
12416.00	86.210	93.230	7341.14	3868.23	990.40	3867.20	0.14	
12509.00	85.530	94.560	7347.84	3960.77	984.10	3959.74	1.60	
12603.00	85.100	93.030	7355.51	4054.24	977.90	4053.22	1.69	
12697.00	84.970	92.760	7363.65	4147.76	973.17	4146.75	0.32	
12790.00	84.970	92.280	7371.80	4240.31	969.09	4239.30	0.51	
12884.00	85.220	90.120	7379.84	4333.94	967.13	4332.93	2.30	
12976.00	85.380	88.700	7387.38	4425.62	968.08	4424.61	1.55	
13070.00	86.700	89.290	7393.87	4519.38	969.72	4518.37	1.54	
13165.00	86.670	88.660	7399.37	4614.21	971.42	4613.19	0.66	
13257.00	87.410	90.990	7404.12	4706.08	971.70	4705.06	2.65	
13350.00	88.120	93.380	7407.74	4798.93	968.16	4797.92	2.68	
13444.00	87.940	93.330	7410.98	4892.71	962.66	4891.70	0.20	
13537.00	88.030	93.670	7414.25	4985.47	956.98	4984.47	0.38	
13631.00	88.030	92.490	7417.48	5079.27	951.94	5078.28	1.25	



Actual Wellpath Report

BOST FARM 26C-8-L AWP

Page 7 of 10



REFERENCE WELLPATH IDENTIFICATION

Operator	SRC ENERGY	Slot	SLOT#38 BOST FARM 26C-8-L (1317'FNL & 941'FWL, SEC..07)
Area	COLORADO	Well	BOST FARM 26C-8-L
Field	WELD COUNTY (NAD83,TRUE NORTH)	Wellbore	BOST FARM 26C-8-L AWB
Facility	SEC.07-T05N-R66W		

WELLPATH DATA (195 stations)

MD [ft]	Inclination [°]	Azimuth [°]	TVD [ft]	Vert Sect [ft]	North [ft]	East [ft]	DLS [°/100ft]	Comments
13725.00	90.860	92.630	7418.39	5173.16	947.74	5172.17	3.01	
13818.00	90.890	90.880	7416.97	5266.10	944.89	5265.11	1.88	
13911.00	90.950	88.660	7415.47	5359.08	945.26	5358.09	2.39	
14004.00	91.390	88.050	7413.57	5452.03	947.93	5451.04	0.81	
14099.00	91.450	88.390	7411.22	5546.95	950.88	5545.96	0.36	
14193.00	92.000	89.000	7408.39	5640.89	953.02	5639.89	0.87	
14287.00	91.940	89.620	7405.16	5734.83	954.15	5733.83	0.66	
14380.00	92.030	89.800	7401.94	5827.77	954.62	5826.77	0.22	
14473.00	90.770	90.300	7399.67	5920.74	954.54	5919.74	1.46	
14565.00	90.770	89.730	7398.43	6012.73	954.52	6011.73	0.62	
14658.00	90.890	89.350	7397.08	6105.72	955.27	6104.72	0.43	
14751.00	90.830	88.610	7395.69	6198.69	956.92	6197.70	0.80	
14845.00	90.770	87.480	7394.37	6292.63	960.13	6291.63	1.20	
14938.00	90.830	88.370	7393.08	6385.56	963.49	6384.56	0.96	
15032.00	90.770	89.160	7391.76	6479.53	965.52	6478.53	0.84	
15124.00	90.920	90.080	7390.41	6571.52	966.13	6570.51	1.01	
15217.00	90.800	90.200	7389.01	6664.51	965.90	6663.50	0.18	
15311.00	90.060	88.570	7388.30	6758.50	966.91	6757.49	1.90	
15404.00	89.850	86.840	7388.38	6851.43	970.64	6850.41	1.87	
15496.00	90.370	85.750	7388.20	6943.24	976.58	6942.22	1.31	
15589.00	89.290	90.230	7388.48	7036.16	979.84	7035.14	4.96	
15681.00	88.280	89.580	7390.43	7128.14	979.99	7127.11	1.31	
15774.00	88.610	89.180	7392.95	7221.10	981.00	7220.07	0.56	
15866.00	88.430	87.270	7395.33	7313.02	983.85	7311.99	2.08	
15959.00	89.380	86.890	7397.11	7405.89	988.59	7404.86	1.10	
16053.00	89.510	86.430	7398.02	7499.73	994.06	7498.69	0.51	
16147.00	89.420	87.540	7398.89	7593.60	999.01	7592.56	1.18	
16240.00	89.350	88.890	7399.89	7686.55	1001.90	7685.50	1.45	
16334.00	89.410	90.670	7400.91	7780.54	1002.26	7779.49	1.89	
16427.00	89.850	91.310	7401.51	7873.52	1000.66	7872.48	0.84	



Actual Wellpath Report

BOST FARM 26C-8-L AWP

Page 8 of 10



REFERENCE WELLPATH IDENTIFICATION

Operator	SRC ENERGY	Slot	SLOT#38 BOST FARM 26C-8-L (1317'FNL & 941'FWL, SEC..07)
Area	COLORADO	Well	BOST FARM 26C-8-L
Field	WELD COUNTY (NAD83,TRUE NORTH)	Wellbore	BOST FARM 26C-8-L AWB
Facility	SEC.07-T05N-R66W		

WELLPATH DATA (195 stations)

MD [ft]	Inclination [°]	Azimuth [°]	TVD [ft]	Vert Sect [ft]	North [ft]	East [ft]	DLS [°/100ft]	Comments
16520.00	89.630	91.660	7401.93	7966.49	998.25	7965.44	0.44	
16614.00	89.970	91.830	7402.26	8060.44	995.38	8059.40	0.40	
16706.00	90.310	91.740	7402.04	8152.39	992.52	8151.36	0.38	
16799.00	90.890	91.750	7401.06	8245.34	989.69	8244.31	0.62	
16891.00	90.950	92.330	7399.58	8337.26	986.41	8336.24	0.63	
16985.00	91.020	94.090	7397.97	8431.09	981.15	8430.07	1.87	
17080.00	90.920	94.930	7396.36	8525.78	973.68	8524.76	0.89	
17174.00	90.990	93.440	7394.79	8619.50	966.82	8618.50	1.59	
17267.00	92.060	91.650	7392.32	8712.37	962.69	8711.37	2.24	
17360.00	91.940	89.060	7389.07	8805.30	962.12	8804.30	2.79	
17453.00	89.940	87.220	7387.55	8898.24	965.14	8897.23	2.92	
17547.00	89.970	87.870	7387.62	8992.15	969.16	8991.14	0.69	
17637.00	90.030	88.990	7387.62	9082.12	971.63	9081.11	1.25	
17729.00	90.000	88.920	7387.60	9174.11	973.31	9173.09	0.08	LAST BH SURVEY (301'FNL & 449'FEL, SEC.08)
17765.00	90.000	88.920	7387.60	9210.10	973.98	9209.09	0.00	PROJ TO BIT (300'FNL & 413'FEL, SEC.08)

HOLE & CASING SECTIONS - Ref Wellbore: BOST FARM 26C-8-L AWB Ref Wellpath: BOST FARM 26C-8-L AWP

String/Diameter	Start MD [ft]	End MD [ft]	Interval [ft]	Start TVD [ft]	End TVD [ft]	Start N/S [ft]	Start E/W [ft]	End N/S [ft]	End E/W [ft]
13.5in Open Hole	20.00	1809.00	1789.00	20.00	1769.86	0.00	0.00	169.07	-268.48
9.625in Casing Surface	20.00	1809.00	1789.00	20.00	1769.86	0.00	0.00	169.07	-268.48
8.5in Open Hole	1809.00	17765.00	15956.00	1769.86	7387.60	169.07	-268.48	973.98	9209.09



Actual Wellpath Report

BOST FARM 26C-8-L AWP

Page 9 of 10



REFERENCE WELLPATH IDENTIFICATION

Operator	SRC ENERGY	Slot	SLOT#38 BOST FARM 26C-8-L (1317'FNL & 941'FWL, SEC..07)
Area	COLORADO	Well	BOST FARM 26C-8-L
Field	WELD COUNTY (NAD83,TRUE NORTH)	Wellbore	BOST FARM 26C-8-L AWB
Facility	SEC.07-T05N-R66W		

TARGETS

Name	TVD [ft]	North [ft]	East [ft]	Grid East [US ft]	Grid North [US ft]	Latitude	Longitude	Shape
SEC.07-T05N-R66W	25.00	-1488.62	323.56	3187161.59	1394309.79	40°24'49.806"N	104°49'40.249"W	polygon
SEC.08-T05N-R66W	25.00	-1488.62	323.56	3187161.59	1394309.79	40°24'49.806"N	104°49'40.249"W	polygon
BOST FARM 26C-8-L TOP OF PROD REV-1 (342'FNL & 150'FWL, SEC.07)	7157.92	989.83	-796.33	3186023.03	1396779.60	40°25'14.297"N	104°49'54.728"W	point
BOST FARM 26C-8-L TOP OF PROD ON PLAT (342'FNL & 150'FWL, SEC.07)	7174.00	989.81	-796.36	3186022.99	1396779.58	40°25'14.297"N	104°49'54.728"W	point
BOST FARM 26N-8B-L HARDLINE BOX	7214.00	20.04	0.00	3186826.64	1395815.89	40°25'04.714"N	104°49'44.432"W	polygon
BOST FARM 26C-8-L BHL ON PLAT (299'FNL & 460'FEL, SEC.08)	7393.00	975.47	9161.94	3195980.71	1396840.58	40°25'14.138"N	104°47'45.974"W	point
BOST FARM 26C-8-L BHL REV-1 (299'FNL & 460'FEL, SEC.08)	7407.96	975.43	9161.97	3195980.75	1396840.54	40°25'14.138"N	104°47'45.974"W	point

WELLPATH COMPOSITION - Ref Wellbore: BOST FARM 26C-8-L AWB Ref Wellpath: BOST FARM 26C-8-L AWP

Start MD [ft]	End MD [ft]	Positional Uncertainty Model	Log Name/Comment	Wellbore
20.00	1761.00	BHI NaviTrak (Standard)	13 1/2" SURFACE SECTION <121-1745>	BOST FARM 26C-8-L AWB
1761.00	17729.00	BHI AutoTrak Curve (MagCAD+IFR1, Short spacing)	8 1/2" MONOBORE SURVEYS <1850-17729>	BOST FARM 26C-8-L AWB
17729.00	17765.00	Blind Drilling (std)	Projection to bit	BOST FARM 26C-8-L AWB



Actual Wellpath Report

BOST FARM 26C-8-L AWP

Page 10 of 10



REFERENCE WELLPATH IDENTIFICATION

Operator	SRC ENERGY	Slot	SLOT#38 BOST FARM 26C-8-L (1317'FNL & 941'FWL, SEC..07)
Area	COLORADO	Well	BOST FARM 26C-8-L
Field	WELD COUNTY (NAD83,TRUE NORTH)	Wellbore	BOST FARM 26C-8-L AWB
Facility	SEC.07-T05N-R66W		

WELLPATH COMMENTS

MD [ft]	Inclination [°]	Azimuth [°]	TVD [ft]	Comment
7741.00	86.449	90.457	7155.85	LANDING (367'FNL & 153'FWL, SEC.07)
17729.00	90.000	88.920	7387.60	LAST BH SURVEY (301'FNL & 449'FEL, SEC.08)
17765.00	90.000	88.920	7387.60	PROJ TO BIT (300'FNL & 413'FEL, SEC.08)