

HALLIBURTON

iCem[®] Service

SRC ENERGY INC

Bost Farm 26C-8-L Production

Sincerely,
Meghan Jacobs

Legal Notice

Disclaimer:

All information in this report is provided subject to the terms and conditions which govern the services provided by Halliburton. Halliburton personnel use their best efforts in gathering information and their best judgment in interpreting it, but any interpretation, research, analysis or recommendation furnished by Halliburton are opinions based upon inferences from measurements and empirical relationships and assumptions, which inferences and empirical relationships and assumptions are not infallible, and with respect to which professionals in the industry may differ. iCem 3D Displacement results are used to understand how fluids intermix during a cement job. Simulation and 3D displacement results are not intended as and should not be used as a replacement for bond logs in determining top of cement. Current 3D model calculations are known to model more volume than the input volume for standard cases due to known calculation improvements required. For rotational cases, the modeled volume will be impacted by the same calculations impacting the standard cases, as well as additional constraints imposed to make the calculation time required operationally feasible. Therefore, until further notice, 3D displacement results should not be used for replacement of a bond log, or used as an identifier of top of cement. HALLIBURTON IS UNABLE TO GUARANTEE THE ACCURACY OF ANY CHART INTERPRETATION, RESEARCH ANALYSIS, OR JOB RECOMMENDATION and any interpretation or recommendation is not for use of or reliance upon by any third party. The customer has full responsibility for any of its decisions which are based on the information provided in this report.

Table of Contents

Cementing Job Summary**Error! Bookmark not defined.**
 Executive Summary **Error! Bookmark not defined.**
Real-Time Job Summary**Error! Bookmark not defined.**
 Job Event Log **Error! Bookmark not defined.**

1.0 Cementing Job Summary

1.1 Executive Summary

Halliburton appreciates the opportunity to perform the cementing services on the **Bost Farm 26C-8-L cement Production** casing job. A pre-job safety meeting was held before the job where details of the job were discussed, potential safety hazards were reviewed, and environmental compliance procedures were outlined.

Approximately 70 bbls of cement were returned to surface.

Halliburton maintains a continuous quality improvement process and appreciates any comments or suggestions that you may have. Halliburton again thanks you for the opportunity to perform service work on this well. We hope to be your solutions provider for future projects.

Respectfully,

Halliburton Fort Lupton

HALLIBURTON

Cementing Job Summary

The Road to Excellence Starts with Safety

Sold To #: 359915		Ship To #: 0003902142		Quote #: 0022509171		Sales Order #: 0905257917					
Customer: SRC ENERGY INC-EBUS				Customer Rep: Buddy Davis							
Well Name: BOST FARM			Well #: 26C-8-L			API/UWI #: 05-123-47691-00					
Field: WATTENBERG		City (SAP): GREELEY		County/Parish: WELD		State: COLORADO					
Legal Description: NW NW-7-5N-66W-1317FNL-941FWL											
Contractor: PRECISION DRLG					Rig/Platform Name/Num: PRECISION 462						
Job BOM: 7523 7523											
Well Type: HORIZONTAL OIL											
Sales Person: HALAMERICA\HB41307					Srvc Supervisor: Steven Markovich						
Job											
Formation Name											
Formation Depth (MD)		Top			Bottom						
Form Type					BHST						
Job depth MD		17710ft			Job Depth TVD		7387				
Water Depth					Wk Ht Above Floor		6				
Perforation Depth (MD)		From			To						
Well Data											
Description	New / Used	Size in	ID in	Weight lbm/ft	Thread	Grade	Top MD ft	Bottom MD ft	Top TVD ft	Bottom TVD ft	
Casing		9.625	8.921	36	LTC	J-55	0	1810	0	1810	
Casing		5.5	4.778	20	TXP-BTC	P110IC	0	17756	0	7387	
Open Hole Section			8.5				1809	17765	1810	7387	
Tools and Accessories											
Type	Size in	Qty	Make	Depth ft		Type	Size in	Qty	Make		
Guide Shoe	5.5					Top Plug	5.5	1	W.F.		
Float Shoe	5.5	1	W.F.	17756		Bottom Plug	5.5	1	W.F.		
Wet Shoe Sub	5.5	1	W.F.	17707		SSR plug set	5.5				
Insert Float	5.5					Plug Container	5.5	1	HES		
Stage Tool	5.5					Centralizers	5.5				
Fluid Data											
Stage/Plug #: 1											
Fluid #	Stage Type	Fluid Name	Qty	Qty UoM	Mixing Density lbm/gal	Yield ft ³ /sack	Mix Fluid Gal	Rate bbl/min	Total Mix Fluid Gal		
1	Tuned Spacer III	Tuned Spacer III	40	bbl	11.5	3.84	24	5	1404		
Fluid #	Stage Type	Fluid Name	Qty	Qty UoM	Mixing Density lbm/gal	Yield ft ³ /sack	Mix Fluid Gal	Rate bbl/min	Total Mix Fluid Gal		
2	HalCem	HALCEM (TM) SYSTEM	440	sack	13.2	1.55	7.59	8	3340		

HALLIBURTON

Cementing Job Summary

Fluid #	Stage Type	Fluid Name	Qty	Qty UoM	Mixing Density lbm/gal	Yield ft3/sack	Mix Fluid Gal	Rate bbl/min	Total Mix Fluid Gal
3	Gasstop B1	GASSTOP (TM) SYSTEM		sack	13.2	1.54	7.64	8	6013
4	NeoCem	NeoCem TM	1175	sack	13.2	2.06	9.79	6	11550
5	MMCR Displacement	MMCR Displacement	20	bbl	8.34				
0.20 gal/bbl		MICRO MATRIX CEMENT RETARDER, 5 GAL PAIL (100003781)							
6	Water	Water	303	bbl	8.33				
1 gal/Mgal		CLA-WEB - BULK (101985043)							
7	MMCR Displacement	MMCR Displacement	70	bbl	8.34				
0.20 gal/bbl		MICRO MATRIX CEMENT RETARDER, 5 GAL PAIL (100003781)							
Cement Left In Pipe	Amount	None			Reason Wet Shoe			Shoe Joint	
Mix Water:	pH 7	Mix Water Chloride:<300 ppm			Mix Water Temperature:55 °F				
Cement Temperature:	68	Plug Displaced by:8.33 lb/gal F.W.			Disp. Temperature:48 °F				
Plug Bumped?	Yes	Bump Pressure:2500 psi			Floats Held?Yes				
Cement Returns:	70 bbl	Returns Density:N/A			Returns Temperature:N/A				
Comment The plug bumped @ calculated displacement @ 2500 PSI. The sleeve opened @ 5450 PSI and pumped a 6 BBL wet shoe. The floats held and received 3.5 BBLS back to the truck. Total of 70 BBLS cement returned to surface									

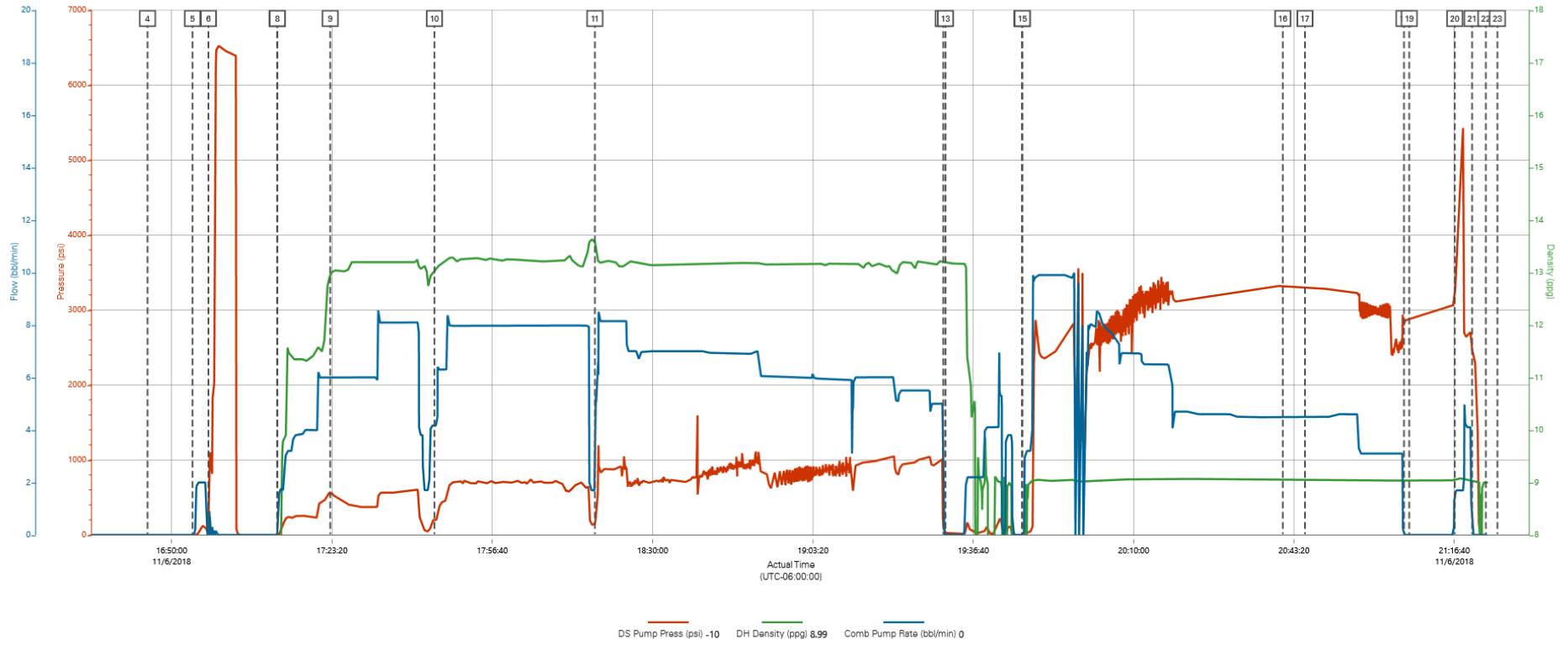
2.0 Real-Time Job Summary

2.1 Job Event Log

Type	Seq. No.	Activity	Graph Label	Date	Time	Source	DS Pump Press <i>(psi)</i>	DH Density <i>(ppg)</i>	Comb Pump Rate <i>(bbl/min)</i>	Comments
Event	1	Call Out	Call Out	11/6/2018	06:00:00	USER				Job called out for OL of 1230
Event	2	Arrive At Loc	Arrive At Loc	11/6/2018	12:00:00	USER				Arrived at location half hour early; discussed water temp and job numbers with company man
Event	3	Start Mix	Start Mixing Latex	11/6/2018	14:49:45	USER	-37.00	7.31	0.00	Started mixing latex, D-air, water in upright tank
Event	4	Pre-Job Safety Meeting	Pre-Job Safety Meeting	11/6/2018	16:45:00	USER	-6.00	7.31	0.00	
Event	5	Start Job	Start Job	11/6/2018	16:54:20	COM5	-9.00	7.34	0.00	
Event	6	Test Lines	Pressure Test Lines	11/6/2018	16:57:40	COM5	23.00	7.29	0.00	Low pressure test at 500psi; high pressure test at 6500psi.
Event	7	Drop Bottom Plug	Drop Bottom Plug	11/6/2018	17:11:56	COM5	-7.00	7.30	0.00	
Event	8	Pump Spacer 1	Pump Spacer 1	11/6/2018	17:12:00	COM5	-7.00	7.30	0.00	Pump 40bbls of 11.5ppg spacer with addition of liquid Musol A and Dual B Spacer.
Stage	2	Next Stage	SRC TSIII Spacer 2511221	11/6/2018	17:12:13	USER	-4.00	7.03	0.80	
Event	9	Pump Cap Cement	Pump Cap Cement	11/6/2018	17:22:58	COM5	568.00	12.96	6.00	Pump 440sks (122bbls) of cap cement with 1.54cuft/sk yield, 7.59gal/sk WR.
Stage	3	Next Stage	SRC Cap for Latex 2498333/8	11/6/2018	17:22:58	USER	568.00	12.96	6.00	
Event	10	Pump Lead Cement	Pump Lead Cement	11/6/2018	17:44:39	COM5	200.00	13.01	4.10	Pump 787sks (216bbls) of latex lead cement with 1.55cuft/sk yield, 7.64gal/sk WR.
Stage	4	Next Stage	13.2 SRC Latex 2498333/7	11/6/2018	17:44:44	USER	200.00	13.02	4.20	
Event	11	Pump Tail Cement	Pump Tail Cement	11/6/2018	18:18:00	COM5	142.00	13.58	1.70	Pump 1175sks (431bbls) of tail cement at 2.06cuft/sk, 9.79gal/sk.
Stage	5	Next Stage	13.2 Thick NeoCem 2505308/6	11/6/2018	18:18:07	USER	191.00	13.55	2.90	

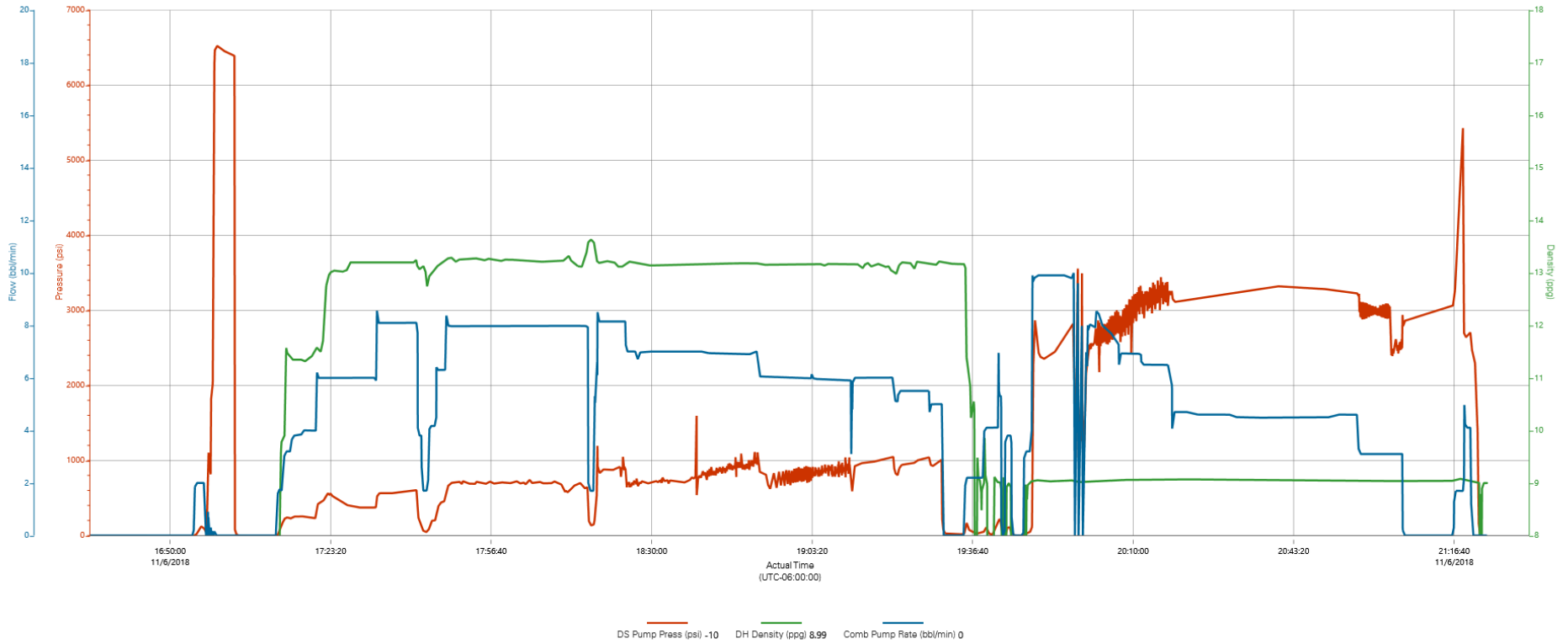
Event	12	Shutdown	Shutdown	11/6/2018	19:30:26	COM5				Shutdown to wash lines.
Event	13	Open Wellhead Bypass	Wash lines	11/6/2018	19:30:54	USER	24.00	13.20	0.00	
Event	14	Drop Top Plug	Drop Top Plug	11/6/2018	19:46:46	COM5	-2.00	2.07	0.00	
Event	15	Pump Displacement	Pump Displacement	11/6/2018	19:46:53	COM5	-2.00	2.07	0.00	Begin pumping fresh water displacement
Stage	6	Next Stage	Water	11/6/2018	19:47:10	USER	-2.00	2.07	0.00	
Event	16	Spacer Returns to Surface	Spacer Returns to Surface	11/6/2018	20:41:00	USER	3323.00	9.06	4.50	Divert tanks; spacer returned 290bbls into displacement.
Event	17	Cement Returns to Surface	Cement Returns to Surface	11/6/2018	20:45:37	USER	3301.00	9.07	4.50	Cement to surface 325bbls into displacement; 69bbls of cement total to surface. Estimated TOLC at 1106ft, TOTC at 6295ft.
Event	18	Bump Plug	Bump Plug	11/6/2018	21:06:13	COM5				Final circulating pressure at 2400psi; bump at 2900psi and 389bbls.
Event	19	Check Tubing Or Casing Pressure	Casing Pressure Test	11/6/2018	21:07:18	USER	2885.00	9.04	0.00	
Event	20	Other	Pump Wet Shoe	11/6/2018	21:16:46	USER	3211.00	9.05	1.70	Pump 6bbls fresh water wet shoe. Open shoe sub at 5452psi.
Event	21	Check Floats	Check Floats	11/6/2018	21:20:22	USER	2470.00	9.03	0.00	Floats held; 3.5bbls back to the truck.
Event	22	End Job	End Job	11/6/2018	21:23:13	COM5				
Event	23	Post-Job Safety Meeting (Pre Rig-Down)	Post-Job Safety Meeting (Pre Rig-Down)	11/6/2018	21:25:37	USER				

Bost Farm 26C-8-L Production



DS Pump Press (psi) -10 DH Density (ppg) 8.99 Comb Pump Rate (bbbl/min) 0

Bost Farm 26C-8-L Production



DS Pump Press (psi) -10 DH Density (ppg) 8.99 Comb Pump Rate (bbt/min) 0