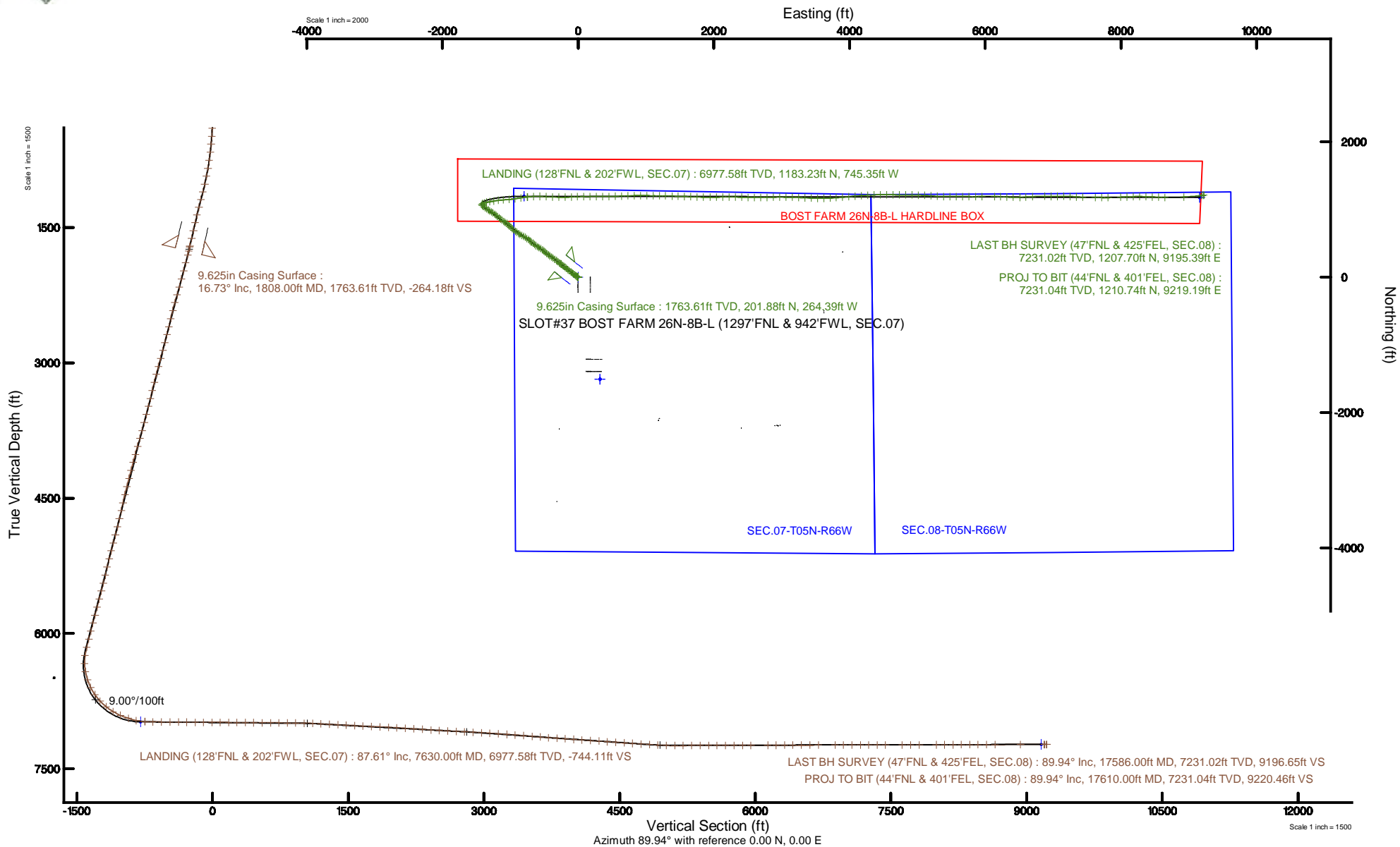


SRC ENERGY

Location: COLORADO Slot: SLOT#37 BOST FARM 26N-8B-L (1297'FNL & 942'FWL, SEC.07)
 Field: WELD COUNTY (NAD83,TRUE NORTH) Well: BOST FARM 26N-8B-L
 Facility: SEC.07-T05N-R66W Wellbore: BOST FARM 26N-8B-L PWB

Plot reference wellpath is BOST FARM 26N-8B-L (REV-B.0) PWP	Grid System: NAD83 / Lambert Colorado SP, Northern Zone (501), US feet
True vertical depths are referenced to PRECISION 462 (20') (RKB)	North Reference: True north
Measured depths are referenced to PRECISION 462 (20') (RKB)	Scale: True distance
PRECISION 462 (20') (RKB) to Mean Sea Level: 4901 feet	Depths are in feet
Mean Sea Level to Mud line (At Slot: SLOT#37 BOST FARM 26N-8B-L (1297'FNL & 942'FWL, SEC.07)): 0 feet	Created by: hanisab on 2019-02-04
Coordinates are in feet referenced to Slot	Database: WellArchitectDB





Actual Wellpath Report

BOST FARM 26N-8B-L AWP

Page 1 of 10



REFERENCE WELLPATH IDENTIFICATION

Operator	SRC ENERGY	Slot	SLOT#37 BOST FARM 26N-8B-L (1297'FNL & 942'FWL, SEC.07)
Area	COLORADO	Well	BOST FARM 26N-8B-L
Field	WELD COUNTY (NAD83,TRUE NORTH)	Wellbore	BOST FARM 26N-8B-L AWB
Facility	SEC.07-T05N-R66W		

REPORT SETUP INFORMATION

Projection System	NAD83 / Lambert Colorado SP, Northern Zone (501), US feet	Software System	WellArchitect® 5.1
North Reference	True	User	Hanisab
Scale	0.999961	Report Generated	2/4/2019 at 9:03:45 PM
Convergence at slot	0.43° East	Database/Source file	WellArchitectDB/BOST_FARM_26N-8B-L_AWP.xml

WELLPATH LOCATION

	Local coordinates		Grid coordinates		Geographic coordinates	
	North[ft]	East[ft]	Easting[US ft]	Northing[US ft]	Latitude	Longitude
Slot Location	1508.66	-323.54	3186826.64	1395815.89	40°25'04.714"N	104°49'44.432"W
Facility Reference Pt			3187161.59	1394309.79	40°24'49.806"N	104°49'40.249"W
Field Reference Pt			3171284.48	1426358.81	40°30'07.643"N	104°53'02.634"W

WELLPATH DATUM

Calculation method	Minimum curvature	PRECISION 462 (20') (RKB) to Facility Vertical Datum	4901.00ft
Horizontal Reference Pt	Slot	PRECISION 462 (20') (RKB) to Mean Sea Level	4901.00ft
Vertical Reference Pt	PRECISION 462 (20') (RKB)	PRECISION 462 (20') (RKB) to Mud Line at Slot (SLOT#37 BOST FARM 26N-8B-L (1297'FNL & 942'FWL, SEC.07))	4901.00ft
MD Reference Pt	PRECISION 462 (20') (RKB)	Section Origin	N 0.00, E 0.00 ft
Field Vertical Reference	Mean Sea Level	Section Azimuth	89.94°



Actual Wellpath Report

BOST FARM 26N-8B-L AWP

Page 2 of 10



REFERENCE WELLPATH IDENTIFICATION

Operator	SRC ENERGY	Slot	SLOT#37 BOST FARM 26N-8B-L (1297'FNL & 942'FWL, SEC.07)
Area	COLORADO	Well	BOST FARM 26N-8B-L
Field	WELD COUNTY (NAD83,TRUE NORTH)	Wellbore	BOST FARM 26N-8B-L AWB
Facility	SEC.07-T05N-R66W		

WELLPATH DATA (186 stations) † = interpolated/extrapolated station

MD [ft]	Inclination [°]	Azimuth [°]	TVD [ft]	Vert Sect [ft]	North [ft]	East [ft]	DLS [°/100ft]	Comments
0.00†	0.000	146.490	0.00	0.00	0.00	0.00	0.00	
20.00	0.000	146.490	20.00	0.00	0.00	0.00	0.00	
137.00	1.310	146.490	136.99	0.74	-1.12	0.74	1.12	
226.00	0.560	176.310	225.98	1.33	-2.40	1.33	0.98	
309.00	1.090	285.050	308.97	0.59	-2.60	0.59	1.66	
399.00	2.930	296.910	398.91	-2.29	-1.33	-2.29	2.09	
489.00	4.760	304.260	488.71	-7.42	1.81	-7.42	2.10	
579.00	7.370	303.560	578.20	-15.31	7.10	-15.32	2.90	
669.00	7.420	303.420	667.45	-24.97	13.50	-24.98	0.06	
759.00	10.240	309.960	756.37	-35.94	21.84	-35.97	3.32	
849.00	13.650	308.010	844.41	-50.44	33.52	-50.47	3.81	
939.00	14.020	308.210	931.80	-67.35	46.80	-67.40	0.41	
1029.00	14.550	305.170	1019.02	-85.15	60.06	-85.21	1.02	
1119.00	18.680	307.380	1105.24	-105.84	75.32	-105.91	4.64	
1209.00	18.810	309.110	1190.47	-128.53	93.23	-128.63	0.63	
1299.00	17.460	309.960	1276.00	-150.12	111.05	-150.23	1.53	
1389.00	17.130	309.680	1361.93	-170.65	128.19	-170.78	0.38	
1479.00	16.730	309.830	1448.03	-190.78	144.95	-190.93	0.45	
1569.00	16.480	310.150	1534.28	-210.47	161.47	-210.64	0.30	
1659.00	15.940	306.500	1620.70	-230.15	177.06	-230.33	1.28	
1749.00	16.550	306.110	1707.11	-250.42	191.96	-250.62	0.69	
1758.00	16.720	305.640	1715.73	-252.51	193.47	-252.71	2.41	
1851.00	16.730	306.000	1804.79	-274.19	209.14	-274.41	0.11	
1944.00	18.580	309.840	1893.41	-296.38	226.50	-296.62	2.35	
2037.00	18.440	309.060	1981.60	-319.16	245.26	-319.42	0.31	
2131.00	18.370	305.990	2070.80	-342.67	263.33	-342.95	1.03	
2224.00	18.530	305.010	2159.02	-366.61	280.42	-366.91	0.38	
2316.00	18.670	303.120	2246.21	-390.90	296.85	-391.21	0.67	
2408.00	18.090	302.030	2333.52	-415.33	312.47	-415.66	0.73	
2501.00	18.180	307.020	2421.90	-439.14	328.87	-439.48	1.67	



Actual Wellpath Report

BOST FARM 26N-8B-L AWP

Page 3 of 10



REFERENCE WELLPATH IDENTIFICATION			
Operator	SRC ENERGY	Slot	SLOT#37 BOST FARM 26N-8B-L (1297'FNL & 942'FWL, SEC.07)
Area	COLORADO	Well	BOST FARM 26N-8B-L
Field	WELD COUNTY (NAD83,TRUE NORTH)	Wellbore	BOST FARM 26N-8B-L AWB
Facility	SEC.07-T05N-R66W		

WELLPATH DATA (186 stations)								
MD [ft]	Inclination [°]	Azimuth [°]	TVD [ft]	Vert Sect [ft]	North [ft]	East [ft]	DLS [°/100ft]	Comments
2594.00	18.140	313.380	2510.28	-461.23	347.55	-461.59	2.13	
2688.00	17.850	314.280	2599.68	-482.15	367.66	-482.54	0.43	
2780.00	17.720	308.470	2687.29	-503.19	386.21	-503.60	1.93	
2873.00	17.730	304.940	2775.88	-525.87	403.13	-526.29	1.16	
2965.00	18.170	305.110	2863.40	-549.07	419.40	-549.51	0.48	
3059.00	17.840	302.570	2952.80	-573.17	435.58	-573.63	0.91	
3152.00	17.860	299.470	3041.33	-597.58	450.27	-598.05	1.02	
3244.00	17.530	304.130	3128.98	-621.32	464.98	-621.81	1.58	
3337.00	17.710	308.070	3217.62	-644.03	481.57	-644.54	1.30	
3431.00	17.500	312.300	3307.22	-665.72	499.89	-666.25	1.38	
3523.00	17.780	311.870	3394.89	-686.39	518.58	-686.94	0.34	
3617.00	17.890	308.270	3484.38	-708.40	537.10	-708.96	1.18	
3711.00	17.860	307.700	3573.84	-731.12	554.86	-731.70	0.19	
3804.00	17.740	304.120	3662.39	-754.12	571.53	-754.71	1.18	
3896.00	18.060	299.410	3749.94	-778.13	586.39	-778.74	1.61	
3988.00	17.930	299.900	3837.44	-802.81	600.46	-803.44	0.22	
4082.00	18.030	299.990	3926.85	-827.94	614.94	-828.58	0.11	
4175.00	17.910	300.880	4015.31	-852.66	629.47	-853.32	0.32	
4268.00	17.640	303.510	4103.88	-876.67	644.59	-877.34	0.91	
4361.00	17.750	304.600	4192.48	-900.07	660.42	-900.76	0.38	
4455.00	17.870	306.850	4281.97	-923.39	677.21	-924.10	0.74	
4550.00	17.880	310.060	4372.39	-946.20	695.33	-946.92	1.04	
4644.00	18.040	310.280	4461.81	-968.32	714.03	-969.07	0.18	
4738.00	17.540	316.120	4551.32	-989.23	733.65	-990.00	1.97	
4830.00	17.690	316.910	4639.01	-1008.36	753.85	-1009.15	0.31	
4925.00	17.890	313.350	4729.47	-1028.81	774.41	-1029.63	1.16	
5018.00	17.700	307.960	4818.02	-1050.33	792.91	-1051.16	1.78	
5112.00	17.770	303.290	4907.56	-1073.57	809.58	-1074.42	1.51	
5205.00	17.290	302.670	4996.24	-1097.05	824.83	-1097.92	0.55	
5298.00	17.540	306.040	5084.98	-1120.00	840.53	-1120.88	1.12	



Actual Wellpath Report

BOST FARM 26N-8B-L AWP

Page 4 of 10



REFERENCE WELLPATH IDENTIFICATION

Operator	SRC ENERGY	Slot	SLOT#37 BOST FARM 26N-8B-L (1297'FNL & 942'FWL, SEC.07)
Area	COLORADO	Well	BOST FARM 26N-8B-L
Field	WELD COUNTY (NAD83,TRUE NORTH)	Wellbore	BOST FARM 26N-8B-L AWB
Facility	SEC.07-T05N-R66W		

WELLPATH DATA (186 stations) † = interpolated/extrapolated station

MD [ft]	Inclination [°]	Azimuth [°]	TVD [ft]	Vert Sect [ft]	North [ft]	East [ft]	DLS [°/100ft]	Comments
5392.00	17.650	309.200	5174.59	-1142.48	857.87	-1143.38	1.02	
5487.00	17.840	311.510	5265.07	-1164.52	876.62	-1165.44	0.77	
5581.00	17.550	312.410	5354.62	-1185.75	895.72	-1186.68	0.42	
5673.00	17.580	310.390	5442.33	-1206.55	914.08	-1207.51	0.66	
5765.00	17.810	306.250	5529.98	-1228.46	931.40	-1229.44	1.39	
5859.00	17.160	302.170	5619.64	-1251.78	947.29	-1252.77	1.48	
5952.00	17.540	302.990	5708.41	-1275.13	962.22	-1276.14	0.49	
6044.00	17.460	303.750	5796.15	-1298.22	977.44	-1299.24	0.26	
6136.00	17.550	303.520	5883.89	-1321.24	992.77	-1322.28	0.12	
6230.00	17.410	304.300	5973.55	-1344.66	1008.52	-1345.71	0.29	
6323.00	17.460	304.600	6062.28	-1367.62	1024.28	-1368.69	0.11	
6417.00	17.400	304.950	6151.96	-1390.73	1040.34	-1391.82	0.13	
6509.00	12.990	319.100	6240.75	-1408.77	1056.05	-1409.88	6.23	
6602.00	10.990	8.440	6331.95	-1414.31	1072.76	-1415.44	10.88	
6694.00	12.710	60.180	6422.23	-1404.20	1086.51	-1405.34	11.30	
6787.00	19.440	68.660	6511.55	-1380.87	1097.24	-1382.02	7.65	
6880.00	25.760	79.170	6597.40	-1346.55	1106.68	-1347.71	8.04	
6973.00	34.600	82.080	6677.72	-1300.44	1114.13	-1301.61	9.63	
7066.00	44.740	78.380	6749.22	-1242.06	1124.39	-1243.24	11.19	
7159.00	50.450	83.160	6811.93	-1174.31	1135.27	-1175.50	7.21	
7251.00	57.510	86.860	6866.01	-1100.23	1141.63	-1101.43	8.33	
7344.00	68.230	85.630	6908.36	-1017.76	1147.08	-1018.97	11.59	
7437.00	71.980	81.940	6940.01	-930.86	1156.58	-932.07	5.49	
7530.00	77.090	80.780	6964.80	-842.26	1170.05	-843.49	5.62	
7623.00	87.470	83.670	6977.28	-751.07	1182.47	-752.31	11.58	
7630.00†	87.610	83.887	6977.58	-744.11	1183.23	-745.35	3.68	LANDING (128'FNL & 202'FWL, SEC.07)
7717.00	89.350	86.580	6979.89	-657.45	1190.45	-658.70	3.68	
7811.00	89.290	91.140	6981.01	-563.50	1192.32	-564.75	4.85	
7904.00	89.450	93.010	6982.03	-470.57	1188.96	-471.82	2.02	
7998.00	89.540	92.410	6982.86	-376.69	1184.51	-377.93	0.65	



Actual Wellpath Report

BOST FARM 26N-8B-L AWP

Page 5 of 10



REFERENCE WELLPATH IDENTIFICATION

Operator	SRC ENERGY	Slot	SLOT#37 BOST FARM 26N-8B-L (1297'FNL & 942'FWL, SEC.07)
Area	COLORADO	Well	BOST FARM 26N-8B-L
Field	WELD COUNTY (NAD83,TRUE NORTH)	Wellbore	BOST FARM 26N-8B-L AWB
Facility	SEC.07-T05N-R66W		

WELLPATH DATA (186 stations)

MD [ft]	Inclination [°]	Azimuth [°]	TVD [ft]	Vert Sect [ft]	North [ft]	East [ft]	DLS [°/100ft]	Comments
8090.00	89.630	90.830	6983.52	-284.73	1181.91	-285.97	1.72	
8183.00	89.600	89.790	6984.15	-191.74	1181.41	-192.97	1.12	
8276.00	89.690	87.490	6984.72	-98.77	1183.61	-100.01	2.47	
8368.00	89.780	87.490	6985.15	-6.85	1187.64	-8.10	0.10	
8461.00	89.910	90.660	6985.40	86.12	1189.14	84.88	3.41	
8553.00	89.140	89.250	6986.16	178.12	1189.22	176.87	1.75	
8646.00	90.120	89.580	6986.76	271.11	1190.17	269.86	1.11	
8738.00	89.450	90.780	6987.11	363.11	1189.88	361.86	1.49	
8831.00	89.230	88.630	6988.18	456.09	1190.36	454.85	2.32	
8925.00	89.420	87.570	6989.29	550.04	1193.47	548.79	1.15	
9017.00	89.630	87.850	6990.05	641.96	1197.15	640.71	0.38	
9110.00	89.320	88.250	6990.90	734.91	1200.31	733.65	0.54	
9203.00	89.510	89.100	6991.85	827.88	1202.46	826.62	0.94	
9295.00	89.260	90.150	6992.84	919.87	1203.07	918.61	1.17	
9388.00	89.230	90.380	6994.07	1012.86	1202.64	1011.61	0.25	
9481.00	87.260	89.880	6996.91	1105.82	1202.42	1104.56	2.19	
9574.00	86.860	90.590	7001.68	1198.69	1202.04	1197.43	0.88	
9667.00	86.760	91.900	7006.86	1291.52	1200.03	1290.26	1.41	
9761.00	87.110	91.920	7011.89	1385.33	1196.90	1384.08	0.37	
9854.00	87.140	92.240	7016.55	1478.15	1193.53	1476.90	0.35	
9946.00	86.950	91.720	7021.29	1569.97	1190.35	1568.72	0.60	
10040.00	86.950	91.630	7026.29	1663.79	1187.61	1662.55	0.10	
10134.00	86.980	92.350	7031.27	1757.60	1184.35	1756.36	0.77	
10227.00	87.320	91.400	7035.90	1850.43	1181.31	1849.19	1.08	
10321.00	87.070	89.820	7040.50	1944.31	1180.31	1943.07	1.70	
10415.00	86.640	88.980	7045.65	2038.16	1181.29	2036.92	1.00	
10508.00	86.390	88.920	7051.31	2130.97	1182.99	2129.74	0.28	
10602.00	86.430	89.880	7057.19	2224.78	1183.98	2223.55	1.02	
10698.00	86.490	91.190	7063.12	2320.59	1183.08	2319.36	1.36	
10791.00	86.330	91.940	7068.94	2413.37	1180.55	2412.14	0.82	



Actual Wellpath Report

BOST FARM 26N-8B-L AWP

Page 6 of 10



REFERENCE WELLPATH IDENTIFICATION

Operator	SRC ENERGY	Slot	SLOT#37 BOST FARM 26N-8B-L (1297'FNL & 942'FWL, SEC.07)
Area	COLORADO	Well	BOST FARM 26N-8B-L
Field	WELD COUNTY (NAD83,TRUE NORTH)	Wellbore	BOST FARM 26N-8B-L AWB
Facility	SEC.07-T05N-R66W		

WELLPATH DATA (186 stations)

MD [ft]	Inclination [°]	Azimuth [°]	TVD [ft]	Vert Sect [ft]	North [ft]	East [ft]	DLS [°/100ft]	Comments
10884.00	86.800	91.480	7074.52	2506.16	1177.78	2504.93	0.71	
10977.00	87.070	90.440	7079.49	2599.01	1176.22	2597.78	1.15	
11071.00	86.980	89.300	7084.37	2692.88	1176.43	2691.65	1.21	
11165.00	87.170	88.370	7089.16	2786.74	1178.34	2785.51	1.01	
11259.00	86.890	88.070	7094.03	2880.57	1181.26	2879.34	0.44	
11352.00	86.150	90.210	7099.68	2973.39	1182.65	2972.15	2.43	
11445.00	86.270	90.320	7105.83	3066.18	1182.22	3064.95	0.17	
11539.00	86.030	91.750	7112.14	3159.95	1180.53	3158.72	1.54	
11632.00	86.090	92.740	7118.53	3252.66	1176.89	3251.42	1.06	
11726.00	85.410	93.280	7125.50	3346.26	1171.97	3345.04	0.92	
11818.00	85.530	92.180	7132.76	3437.86	1167.60	3436.64	1.20	
11912.00	85.620	90.710	7140.02	3531.55	1165.24	3530.33	1.56	
12004.00	85.620	89.160	7147.04	3623.28	1165.35	3622.06	1.68	
12097.00	85.560	87.620	7154.19	3715.97	1167.95	3714.74	1.65	
12189.00	85.990	85.990	7160.97	3807.57	1173.06	3806.35	1.83	
12282.00	86.180	85.220	7167.32	3900.09	1180.17	3898.86	0.85	
12375.00	86.060	84.750	7173.61	3992.53	1188.29	3991.29	0.52	
12468.00	86.180	84.620	7179.91	4084.93	1196.88	4083.68	0.19	
12561.00	86.030	86.030	7186.23	4177.41	1204.44	4176.15	1.52	
12656.00	86.060	86.310	7192.78	4271.98	1210.77	4270.71	0.30	
12749.00	85.990	88.380	7199.23	4364.65	1215.07	4363.38	2.22	
12842.00	85.930	89.400	7205.78	4457.41	1216.87	4456.13	1.10	
12935.00	86.030	90.550	7212.30	4550.18	1216.91	4548.90	1.24	
13029.00	86.300	90.480	7218.58	4643.96	1216.06	4642.69	0.30	
13123.00	86.270	90.940	7224.68	4737.75	1214.90	4736.49	0.49	
13217.00	86.050	89.000	7230.97	4831.54	1214.95	4830.27	2.07	
13309.00	87.100	91.380	7236.47	4923.37	1214.65	4922.10	2.82	
13401.00	88.180	92.520	7240.26	5015.23	1211.52	5013.96	1.71	
13496.00	90.000	93.690	7241.77	5110.07	1206.37	5108.81	2.28	
13589.00	90.430	94.030	7241.42	5202.85	1200.11	5201.59	0.59	



Actual Wellpath Report

BOST FARM 26N-8B-L AWP

Page 7 of 10



REFERENCE WELLPATH IDENTIFICATION

Operator	SRC ENERGY	Slot	SLOT#37 BOST FARM 26N-8B-L (1297'FNL & 942'FWL, SEC.07)
Area	COLORADO	Well	BOST FARM 26N-8B-L
Field	WELD COUNTY (NAD83,TRUE NORTH)	Wellbore	BOST FARM 26N-8B-L AWB
Facility	SEC.07-T05N-R66W		

WELLPATH DATA (186 stations)

MD [ft]	Inclination [°]	Azimuth [°]	TVD [ft]	Vert Sect [ft]	North [ft]	East [ft]	DLS [°/100ft]	Comments
13683.00	90.210	93.590	7240.89	5296.63	1193.87	5295.38	0.52	
13777.00	90.210	90.490	7240.55	5390.56	1190.52	5389.31	3.30	
13870.00	89.910	89.940	7240.45	5483.55	1190.17	5482.31	0.67	
13963.00	90.180	89.200	7240.38	5576.55	1190.87	5575.31	0.85	
14057.00	90.030	90.510	7240.20	5670.55	1191.11	5669.31	1.40	
14151.00	90.090	91.400	7240.11	5764.53	1189.54	5763.29	0.95	
14245.00	90.030	89.390	7240.01	5858.53	1188.89	5857.28	2.14	
14338.00	90.240	88.900	7239.79	5951.52	1190.28	5950.27	0.57	
14525.00	90.270	90.900	7238.96	6138.50	1190.61	6137.26	1.07	
14617.00	90.240	92.720	7238.55	6230.45	1187.70	6229.21	1.98	
14709.00	90.340	93.120	7238.08	6322.33	1183.01	6321.09	0.45	
14803.00	90.430	90.930	7237.45	6416.26	1179.69	6415.02	2.33	
14897.00	90.240	89.290	7236.90	6510.25	1179.51	6509.02	1.76	
14990.00	90.430	87.010	7236.36	6603.20	1182.51	6601.96	2.46	
15084.00	90.090	86.690	7235.93	6697.06	1187.68	6695.82	0.50	
15270.00	90.000	89.560	7235.78	6882.95	1193.77	6881.70	1.54	
15363.00	90.150	91.740	7235.66	6975.93	1192.71	6974.69	2.35	
15456.00	90.340	88.370	7235.26	7068.92	1192.62	7067.67	3.63	
15548.00	89.840	90.230	7235.12	7160.91	1193.74	7159.66	2.09	
15641.00	90.030	92.740	7235.22	7253.87	1191.33	7252.62	2.71	
15733.00	89.900	94.220	7235.28	7345.69	1185.75	7344.45	1.61	
15825.00	90.090	91.490	7235.29	7437.56	1181.17	7436.33	2.97	
16012.00	90.210	91.120	7234.80	7624.51	1176.91	7623.28	0.21	
16104.00	90.090	90.300	7234.56	7716.50	1175.77	7715.27	0.90	
16200.00	90.120	89.920	7234.38	7812.50	1175.59	7811.27	0.40	
16387.00	90.270	86.330	7233.75	7999.37	1181.70	7998.14	1.92	
16479.00	90.060	89.090	7233.48	8091.29	1185.38	8090.06	3.01	
16572.00	90.030	87.140	7233.41	8184.24	1188.44	8183.00	2.10	
16666.00	90.340	91.160	7233.10	8278.21	1189.83	8276.97	4.29	
16758.00	90.240	91.520	7232.64	8370.18	1187.68	8368.94	0.41	



Actual Wellpath Report

BOST FARM 26N-8B-L AWP

Page 8 of 10



REFERENCE WELLPATH IDENTIFICATION

Operator	SRC ENERGY	Slot	SLOT#37 BOST FARM 26N-8B-L (1297'FNL & 942'FWL, SEC.07)
Area	COLORADO	Well	BOST FARM 26N-8B-L
Field	WELD COUNTY (NAD83,TRUE NORTH)	Wellbore	BOST FARM 26N-8B-L AWB
Facility	SEC.07-T05N-R66W		

WELLPATH DATA (186 stations)

MD [ft]	Inclination [°]	Azimuth [°]	TVD [ft]	Vert Sect [ft]	North [ft]	East [ft]	DLS [°/100ft]	Comments
16851.00	90.210	92.710	7232.27	8463.11	1184.25	8461.88	1.28	
16943.00	90.210	92.160	7231.94	8555.03	1180.34	8553.79	0.60	
17037.00	90.270	91.380	7231.54	8648.98	1177.44	8647.75	0.83	
17319.00	90.000	86.500	7230.88	8930.85	1182.65	8929.61	1.73	
17586.00	89.940	82.730	7231.02	9196.65	1207.70	9195.39	1.41	LAST BH SURVEY (47'FNL & 425'FEL, SEC.08)
17610.00	89.940	82.730	7231.04	9220.46	1210.74	9219.19	0.00	PROJ TO BIT (44'FNL & 401'FEL, SEC.08)

HOLE & CASING SECTIONS - Ref Wellbore: BOST FARM 26N-8B-L AWB Ref Wellpath: BOST FARM 26N-8B-L AWP

String/Diameter	Start MD [ft]	End MD [ft]	Interval [ft]	Start TVD [ft]	End TVD [ft]	Start N/S [ft]	Start E/W [ft]	End N/S [ft]	End E/W [ft]
13.5in Open Hole	20.00	1808.00	1788.00	20.00	1763.61	0.00	0.00	201.88	-264.39
9.625in Casing Surface	20.00	1808.00	1788.00	20.00	1763.61	0.00	0.00	201.88	-264.39
8.5in Open Hole	1808.00	17610.00	15802.00	1763.61	7231.04	201.88	-264.39	1210.74	9219.19



Actual Wellpath Report

BOST FARM 26N-8B-L AWP

Page 9 of 10



REFERENCE WELLPATH IDENTIFICATION

Operator	SRC ENERGY	Slot	SLOT#37 BOST FARM 26N-8B-L (1297'FNL & 942'FWL, SEC.07)
Area	COLORADO	Well	BOST FARM 26N-8B-L
Field	WELD COUNTY (NAD83,TRUE NORTH)	Wellbore	BOST FARM 26N-8B-L AWB
Facility	SEC.07-T05N-R66W		

TARGETS

Name	TVD [ft]	North [ft]	East [ft]	Grid East [US ft]	Grid North [US ft]	Latitude	Longitude	Shape
SEC.07-T05N-R66W	25.00	-1508.66	323.56	3187161.59	1394309.79	40°24'49.806"N	104°49'40.249"W	polygon
SEC.08-T05N-R66W	25.00	-1508.66	323.56	3187161.59	1394309.79	40°24'49.806"N	104°49'40.249"W	polygon
BOST FARM 26N-8B-L TOP OF PROD REV-1 (117'FNL & 150'FWL, SEC.07)	6979.45	1194.56	-797.48	3186020.17	1397004.33	40°25'16.518"N	104°49'54.743"W	point
BOST FARM 26N-8B-L TOP OF PROD ON PLAT (117'FNL & 150'FWL, SEC.07)	7002.00	1194.56	-797.47	3186020.19	1397004.33	40°25'16.518"N	104°49'54.743"W	point
BOST FARM 26N-8B-L BHL ON PLAT (77'FNL & 460'FWL, SEC.08)	7214.00	1178.03	9160.19	3195977.28	1397063.15	40°25'16.338"N	104°47'45.996"W	point
BOST FARM 26N-8B-L HARDLINE BOX	7214.00	0.00	0.00	3186826.64	1395815.89	40°25'04.714"N	104°49'44.432"W	polygon
BOST FARM 26N-8B-L BHL REV-1 (77'FNL & 460'FEL, SEC.08)	7229.80	1178.03	9160.19	3195977.28	1397063.15	40°25'16.338"N	104°47'45.996"W	point

WELLPATH COMPOSITION - Ref Wellbore: BOST FARM 26N-8B-L AWB Ref Wellpath: BOST FARM 26N-8B-L AWP

Start MD [ft]	End MD [ft]	Positional Uncertainty Model	Log Name/Comment	Wellbore
20.00	1758.00	BHI NaviTrak (Standard)	13 1/2" SURFACE SECTION <121-1742>	BOST FARM 26N-8B-L AWB
1758.00	17586.00	BHI AutoTrak Curve (MagCAD+IFR1, Short spacing)	8 1/2" MONOBORE SURVEYS <1851-17586>	BOST FARM 26N-8B-L AWB
17586.00	17610.00	Blind Drilling (std)	Projection to bit	BOST FARM 26N-8B-L AWB



Actual Wellpath Report

BOST FARM 26N-8B-L AWP

Page 10 of 10



REFERENCE WELLPATH IDENTIFICATION			
Operator	SRC ENERGY	Slot	SLOT#37 BOST FARM 26N-8B-L (1297'FNL & 942'FWL, SEC.07)
Area	COLORADO	Well	BOST FARM 26N-8B-L
Field	WELD COUNTY (NAD83,TRUE NORTH)	Wellbore	BOST FARM 26N-8B-L AWB
Facility	SEC.07-T05N-R66W		

WELLPATH COMMENTS				
MD [ft]	Inclination [°]	Azimuth [°]	TVD [ft]	Comment
7630.00	87.610	83.887	6977.58	LANDING (128'FNL & 202'FWL, SEC.07)
17586.00	89.940	82.730	7231.02	LAST BH SURVEY (47'FNL & 425'FEL, SEC.08)
17610.00	89.940	82.730	7231.04	PROJ TO BIT (44'FNL & 401'FEL, SEC.08)