



March 3, 2019

Mr. Jeff Robbins, Acting Director
Colorado Oil & Gas Conservation Commission
1120 Lincoln Street, Ste. 801
Denver, Colorado 80203

RE: Rule 318.A.e.
Livingston S19-25-15N

Surface Location: NESE, Section 7, Township 1 South, Range 68 West, Broomfield County, CO

Dear Acting Director Jeff Robbins,

Extraction Oil and Gas is planning to drill the captioned horizontal well in accordance with the provision of COGCC Rule 318A.e.

The proposed wellbore spacing unit consists of:

Township 1 South, Range 68 West: Section 7: SENE, E2SE; Section 8: SWNW, W2SW; Section 17: W2W2; Section 18: E2E2; Section 19: E2E2; Section 20: W2W2

The spacing unit is an 880-acre wellbore spacing unit for the Niobrara formation.

Extraction Oil and Gas hereby certifies to the Acting Director that all Owners within the proposed spacing unit above were notified and 30 days have passed without valid objection.

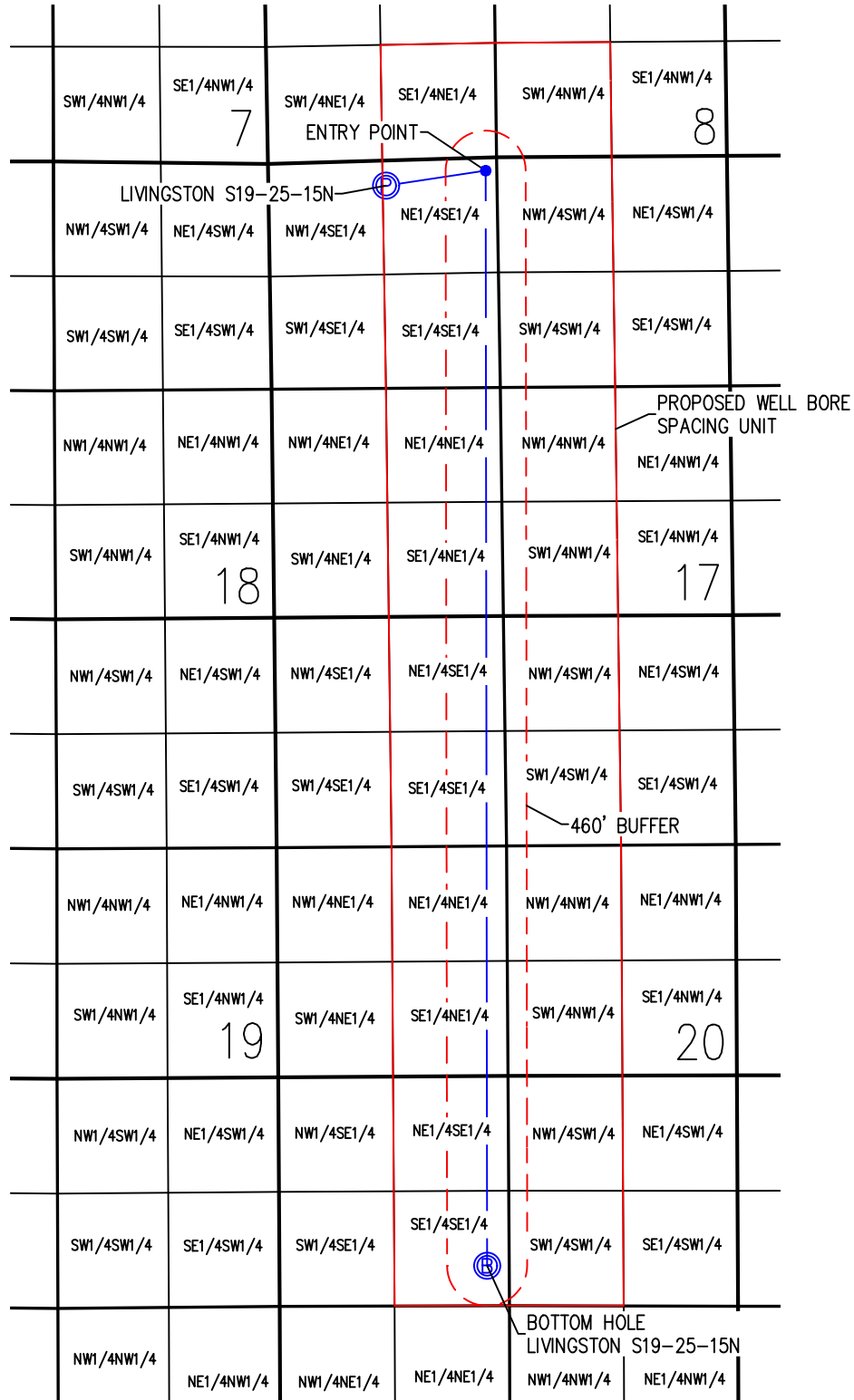
If you have any questions or issues regarding this matter, please contact Jason Rayburn at (720) 974-7798.

Sincerely,



Extraction Oil & Gas, Inc.

WELL BORE DIAGRAM LIVINGSTON PAD LIVINGSTON S19-25-15N



LIVINGSTON S19-25-15N

SURFACE LOCATION

LATITUDE = 39.978560°
LONGITUDE = -105.039223°

ENTRY POINT LOCATION

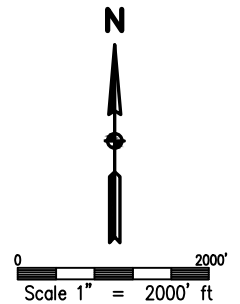
LATITUDE = 39.979016°
LONGITUDE = -105.035135°

BOTTOM HOLE LOCATION

LATITUDE = 39.944470°
LONGITUDE = -105.035309°

NOTES:

- 1) THIS SKETCH DOES NOT REPRESENT A BOUNDARY SURVEY.
- 2) THE DATUM FOR THE LATITUDES AND LONGITUDES ON THIS SKETCH IS NAD83.



LEGEND

- PROPOSED WELL HEAD
- PROPOSED BOTTOM HOLE
- ENTRY POINT



DRAWN BY
DAM

CHECKED BY
AAD

INITIAL SUBMITTAL 12/20/2017

REVISED NA

DRAWING SIZE 8.5" X 11"

JOB NO. EXT01S68W07-01

SHEET 1 OF 1



4007 S. LINCOLN AVENUE, SUITE 405 • LOVELAND, COLORADO 80537
P: 970.353.7800 • F: 970.353.7801 • www.baselinecorp.com