

Inspection Photos

3/04/2019

Operator: SWN PRODUCTION COMPANY LLC -
10396

Location ID: 427955

Inspection Doc. Number: 682504560
Adams County, CO

Aaron Trujillo
NE Reclamation Specialist
COGCC



Photo 1: Photo taken from the south end of the location, facing west. Photos 1-4 provide an overview of the location from west, northwest, northeast to east. Corrective actions and COAs required operator to conduct reclamation and reduce the location's disturbance area to 0.92 acres. Photos show reclamation has not been conducted; disturbance area has not been reduced.



Photo 2: See comments under photo 1.



Photo 3: See comments under photo 1.



Photo 4: See comments under photo 1.



Photo 5: Photo taken from the south end of the location, facing southwest. Photo shows wood-mulch wattle (stormwater ponding BMP). Previous inspections documented that BMP was degrading. Photo shows BMP remains on location.



Photo 6: Photo taken from the ditch on the west end of the location, facing northwest. Previous inspections documented that stormwater runoff has incised the ditch along the west end of the pad and created sinkholes within the ditch. Photo shows stormwater degradation within the ditch has not been repaired and stabilized.



Photo 7: Photo taken from the ditch on the west end of the location, facing west. See comments under photo 6.



Photo 8: Photo taken from the ditch on the west end of the location, facing southwest. See comments under photo 6.



Photo 9: Photo taken from the north end of the location. Photo shows a patch of Canada thistle on location. Canada thistle (*Cirsium arvense*) is a Colorado state listed noxious weeds and requires management.



Photo 10: Photo taken from the north end of the location. Photo shows Canada thistle.



Photo 11: Photo taken from the north end of the location, facing northeast. Photo shows gully erosion has not been repaired and or stabilized.



Photo 12: Photo taken from the north end of the location, facing southwest. Photo shows gully erosion has not been repaired and or stabilized.



Photo 13: Photo taken from the north end of the location, facing south. Photo shows gully erosion has not been repaired and or stabilized.



Photo 14: Photo taken from the ditch on the west end of the location. Photo shows area previously documented where erosion degradation has been cutting eastward into the pad. Photo shows erosion degradation has not been repaired or stabilized.

Inspection Photos
Operator: SWN PRODUCTION COMPANY LLC - 10396
Location ID: 427955

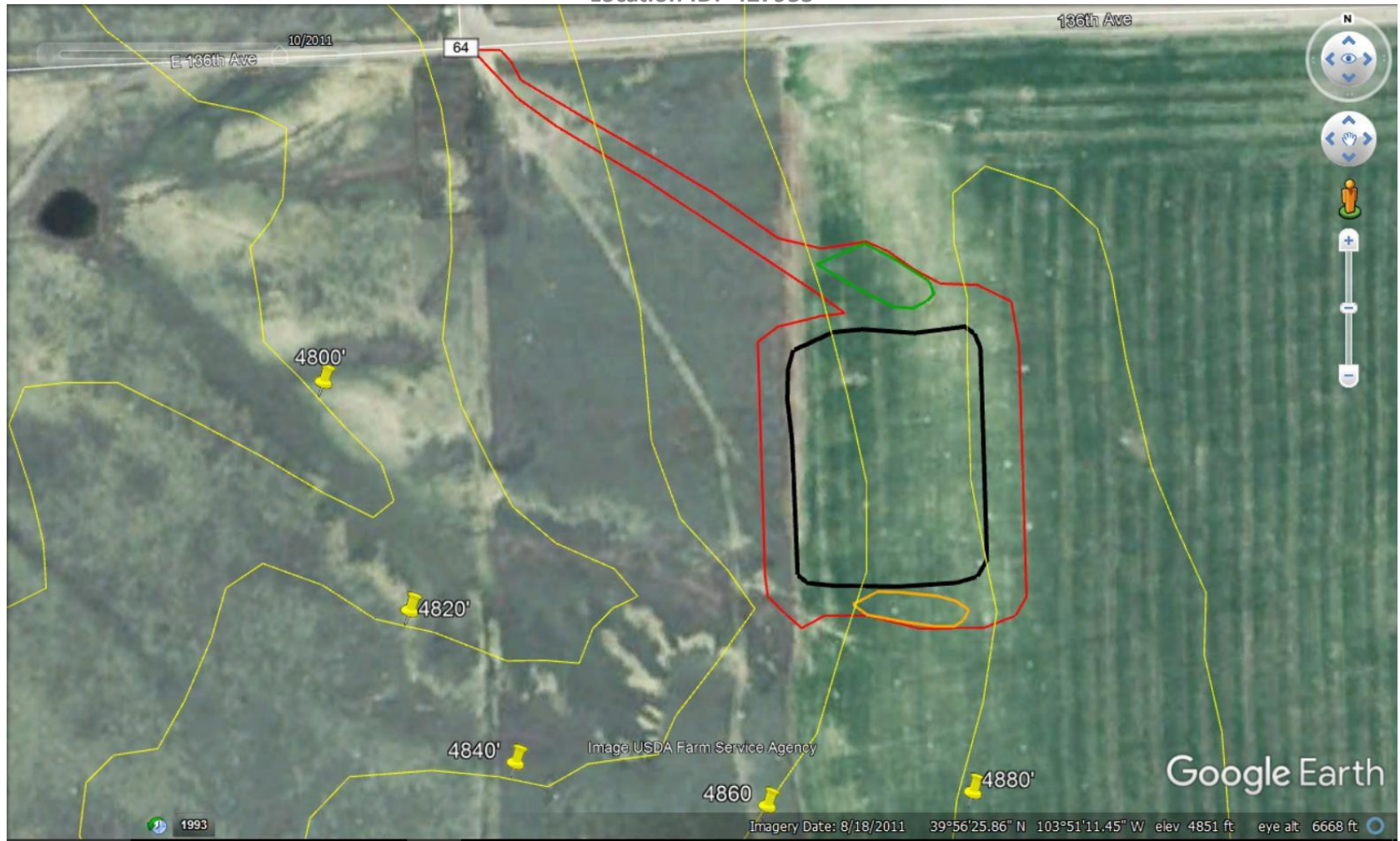


Photo 15: 2011 aerial imagery. Photo shows the location prior to oil and gas disturbances. Yellow lines indicate elevation/topography. Red polygon represents total disturbance (location+access road). Total disturbance is ~4.9 acres (4.5 acres excluding access road). Black polygon represents pad/production area size. Pad size is ~2.43 acres. Green polygon represents area of the topsoil stock pile and orange polygon represents area of “spoils” stockpile based on location drawing, “Exhibit A”, of document #401313989.

Inspection Photos
Operator: SWN PRODUCTION COMPANY LLC - 10396
Location ID: 427955

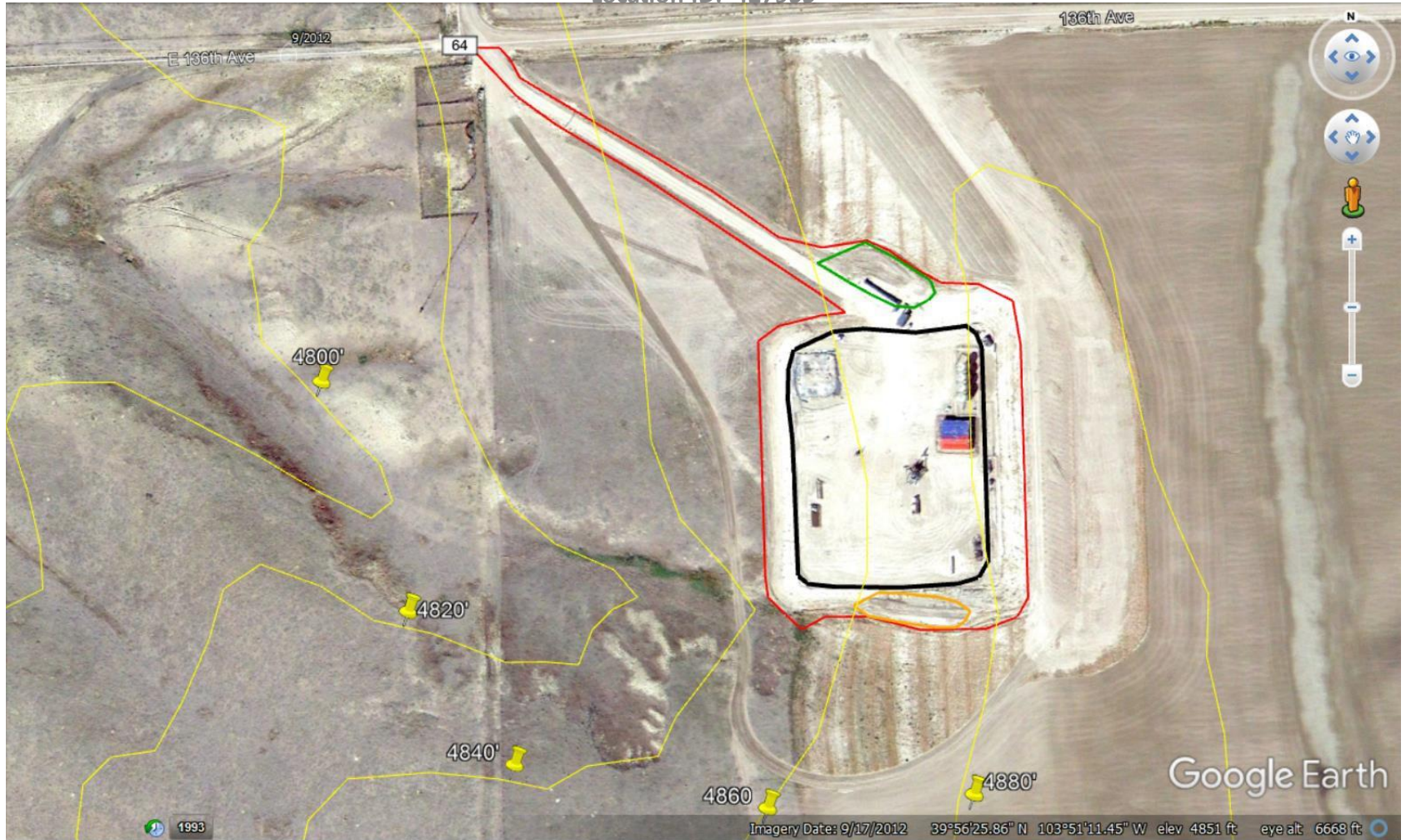


Photo 16: 9/17/2012 Aerial imagery. Well was SPUD 4/11/2012. COGCC records show first production date on 07/2012. COGCC 1003 reclamation rules require operator to perform interim reclamation (IR) on areas no longer reasonably needed for production to occur no later than three (3) months on cropland after drilling operations. Date IR would need to have been conducted is 10/2012. Photo shows location prior to when IR would need to have been conducted. 2A doc. # 400252948 states disturbance size during construction is 3.67 acres. Total disturbance size is ~4.5 acres (4.92 with access road).

Inspection Photos
Operator: SWN PRODUCTION COMPANY LLC - 10396
Location ID: 427955



Photo 17: 9/06/2013 aerial imagery. 2A doc. #400252948 states size of location after IR is 0.92 acres, with IR estimated to begin on 9/1/2012. Based on production records, interim reclamation (IR) on areas no longer reasonably needed for production should have occurred no later than 10/2012. Photo image date is 11 months after when IR should have occurred. Photo shows location does not appear to have been reduced in size; IR does not appear to have been conducted. Total disturbance remains ~4.9 acres with pad/production area ~2.43 acres.

Inspection Photos
Operator: SWN PRODUCTION COMPANY LLC - 10396
Location ID: 427955

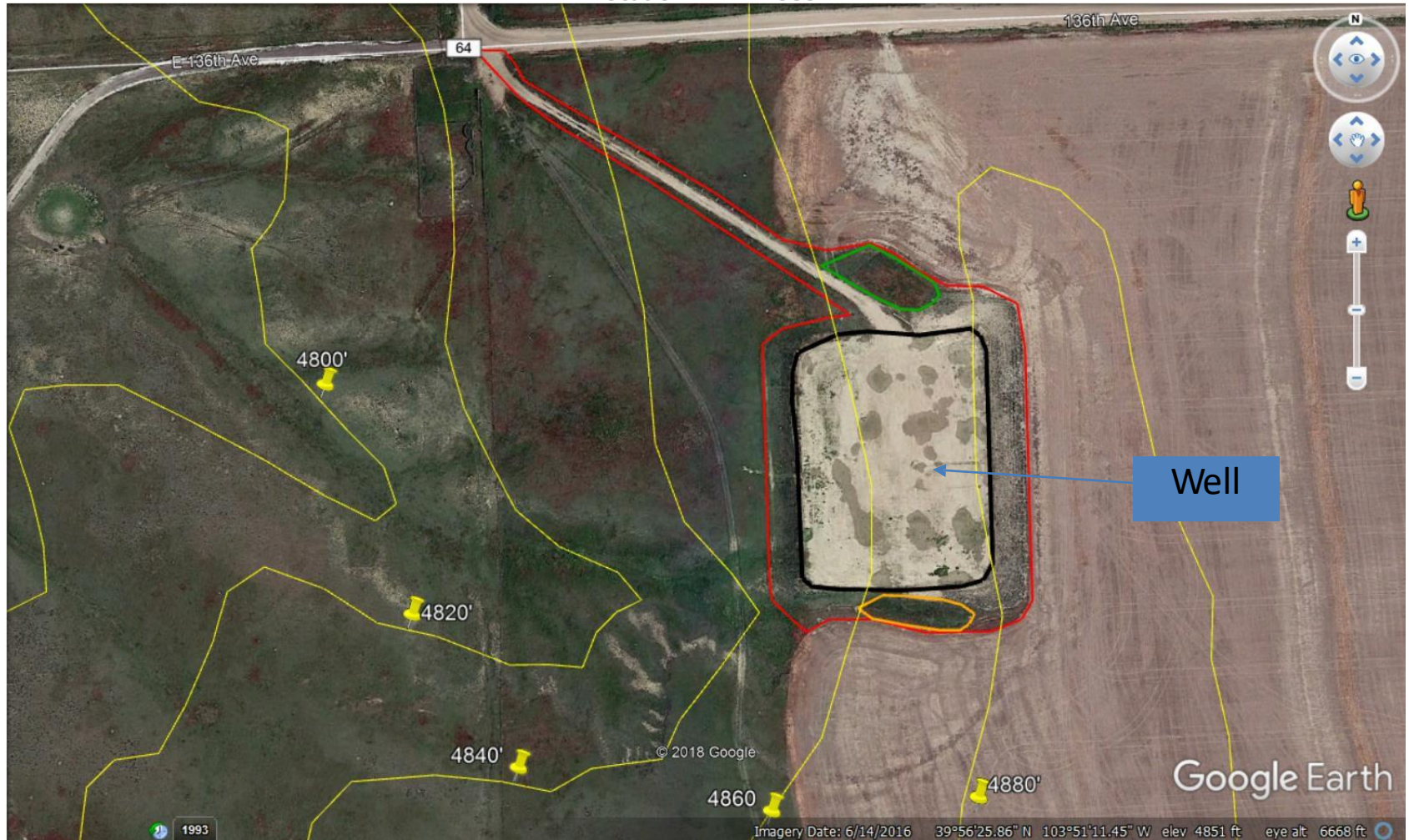


Photo 18: Current available aerial imagery dated 06/14/2016. 6(s) doc. #400900611 states well was PA'd on 8/28/2015. Photo shows well and equipment appear to have been removed. Location would now have been subject to 1004 reclamation rules which require final reclamation to be completed within 3 months on crop land after plugging a well. Final reclamation should have been completed by 11/28/2015. Photo shows location/disturbance size