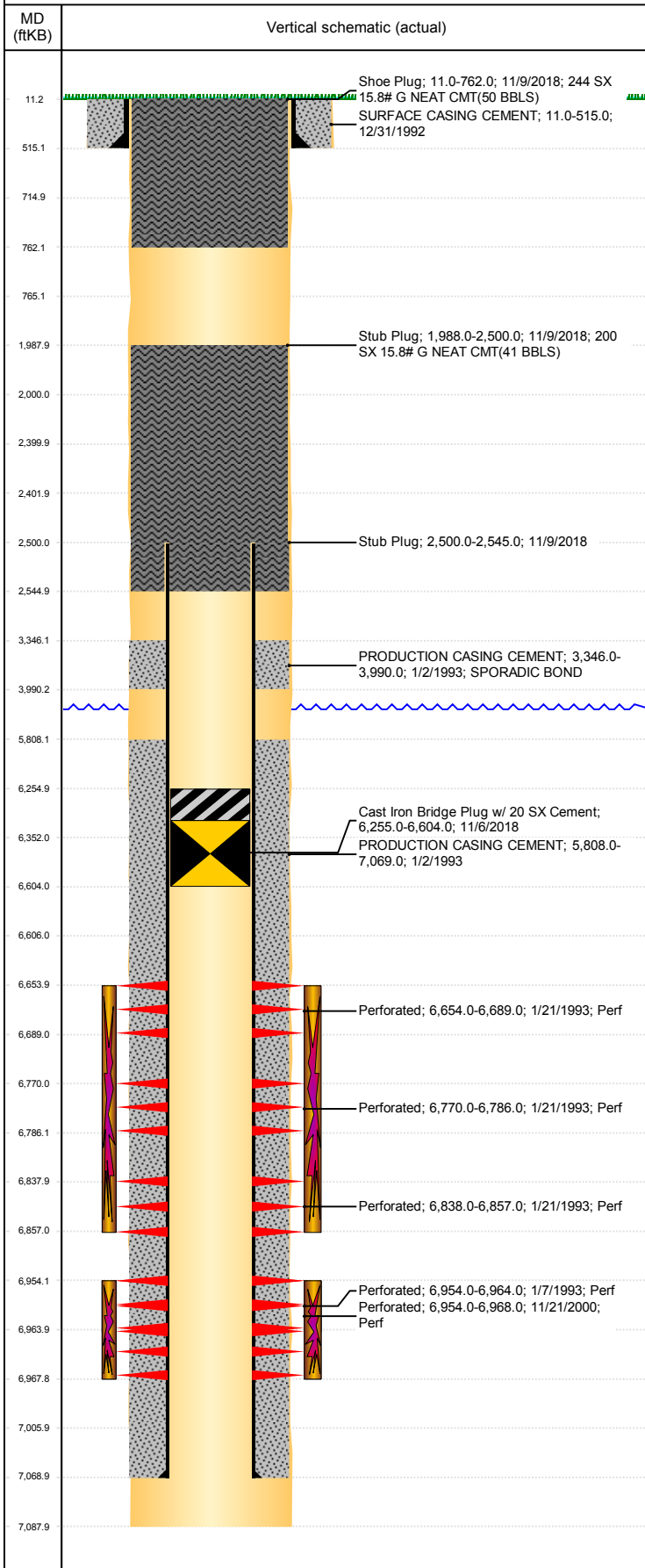


Well Name: HAMILTON 25-08B

VERTICAL, ORIGINAL HOLE, 1/25/2019 8:48:50 AM



Well Header									
API 05-123-16494		Business Unit DJ BASIN			District 15		Well Config VERTICAL		
KB - GL / MSL (ft... 11.00		Spud Date 12/30/1992		P & A Date 11/9/2018		Well Production Status PA			SoRT Yes
Comment LCTN MV'D, KB= 11', ORIGINAL LOGS HAVE INCORRECT GL.									
Surface Location (Congressional)									
Qtr 3 SE	Qtr 4 NE	Section 25	Twنشp 5	Twنشp... N	Range 65	Rng E/... W	Actual Latitude (°) 40.37147290	Actual Longitude (°) -104.60356674	
Wellbore Sections									
Section Des			Size (in)			Act Top, MD (ftKB)		Act Btm, MD (ftKB)	
SURFACE			12 1/4			11		515	
PRODUCTION			7 7/8			515		7,088	
Casing Strings									
Csg Des		Run Date		OD (in)	Wt/Len (lb/ft)	Grade	Top, MD (ftKB)	MD (ftKB)	
Surface Casing		12/31/1992		8 5/8	23.00		11.0	515.0	
Production		1/2/1993		4 1/2	11.60		11.0	7,069.0	
Cement									
Des				Start Date		Top (ftKB)		Btm (ftKB)	
SURFACE CASING CEMENT				12/31/1992		11.0		515.0	
PRODUCTION CASING CEMENT				1/2/1993		3,346.0		3,990.0	
PRODUCTION CASING CEMENT				1/2/1993		5,808.0		7,069.0	
Stub Plug				11/9/2018		1,988.0		2,500.0	
Stub Plug				11/9/2018		2,500.0		2,545.0	
Shoe Plug				11/9/2018		11.0		762.0	
Zone Statuses									
Zone Name		Status Date	Status	Fluid Type	Job			Prod Method	
NIOBRARA		10/27/2016	SI	Water	ABANDON WELL, 11/5/2018 00:00			Flowing	
NIOBRARA		11/7/2018	P&A						
CODELL		2/4/2010	PR						
CODELL		11/7/2018	P&A	ABANDON WELL, 11/5/2018 00:00					
Perforation Data									
Linked Zone		Bnch/Stg	Entered Shot Total	Top (ftKB)		Btm (ftKB)		Date	
NIOBRARA, ORIGINAL HOLE		A	18	6,654.00		6,689.00		1/21/1993	
NIOBRARA, ORIGINAL HOLE		B	16	6,770.00		6,786.00		1/21/1993	
NIOBRARA, ORIGINAL HOLE		C	8	6,838.00		6,857.00		1/21/1993	
CODELL, ORIGINAL HOLE			20	6,954.00		6,964.00		1/7/1993	
CODELL, ORIGINAL HOLE			56	6,954.00		6,968.00		11/21/2000	
Stimulation Intervals									
Zone			Start Date			Top (ftKB)		Btm (ftKB)	
NIOBRARA, ORIGINAL HOLE			1/22/1993			6,654.0		6,857.0	
CODELL, ORIGINAL HOLE			1/12/1993			6,954.0		6,964.0	
CODELL, ORIGINAL HOLE			11/29/2000			6,954.0		6,968.0	
CODELL, ORIGINAL HOLE			2/8/2007			6,954.0		6,968.0	
Other In Hole									
Run Date		Des				OD (in)	Top (ftKB)	Btm (ftKB)	
11/6/2018		Cast Iron Bridge Plug w/ 20 SX Cement				4	6,255.0	6,604.0	
Logs									
Date		Type				Top, MD (ftKB)		Btm, MD (ftKB)	
1/3/1993		COMPENSATED DENSITY				2,650.0		7,068.0	
1/3/1993		DUAL INDUCTION				515.0		7,068.0	
1/3/1993		SONIC				3,150.0		7,001.0	
4/2/2013		GYRO				11.0		6,940.0	
Plug Back Total Depths									
Date		Type		Com				Depth (ftKB)	
								7,006.0	