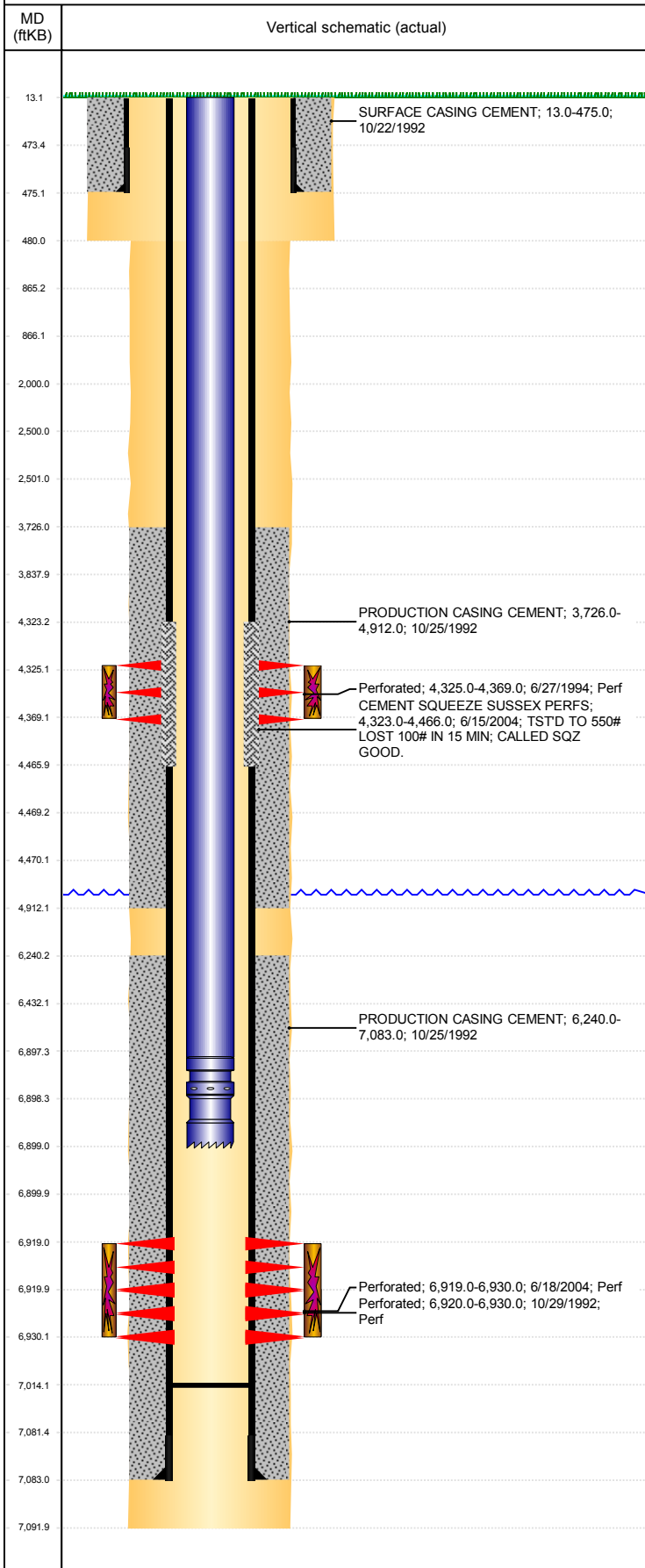


**Well Name: KARCH BLUE D10-08**

VERTICAL, ORIGINAL HOLE, 3/1/2019 9:56:16 AM



Well Header									
API 05-123-16136		Business Unit DJ BASIN			District 15		Well Config VERTICAL		
KB - GL / MSL (ft... 13.00		Spud Date 10/21/1992		P & A Date		Well Production Status SI		SoRT No	
Comment CEMENT SQZD SUSSEX 6/15/04 W/150 SXS.									
Surface Location (Congressional)									
Qtr 3 SE	Qtr 4 NE	Section 10	Twnshp 3	Twنش... N	Range 64	Rng E/... W	Actual Latitude (°) 40.24123559	Actual Longitude (°) -104.53089266	
Wellbore Sections									
Section Des			Size (in)			Act Top, MD (ftKB)		Act Btm, MD (ftKB)	
SURFACE			12 1/4			13		480	
PRODUCTION			7 7/8			480		7,092	
Casing Strings									
Csg Des			Run Date		OD (in)	Wt/Len (lb/ft)	Grade	Top, MD (ftKB)	MD (ftKB)
Surface			10/22/1992		8 5/8	24.00	J-55	13.0	475.0
Production			10/25/1992		4 1/2	15.10		13.0	7,083.0
Cement									
Des					Start Date		Top (ftKB)		Btm (ftKB)
SURFACE CASING CEMENT					10/22/1992		13.0		475.0
PRODUCTION CASING CEMENT					10/25/1992		3,726.0		4,912.0
PRODUCTION CASING CEMENT					10/25/1992		6,240.0		7,083.0
CEMENT SQUEEZE SUSSEX PERFS					6/15/2004		4,323.0		4,466.0
Zone Statuses									
Zone Name		Status Date	Status	Fluid Type	Job			Prod Method	
CODELL		6/29/2004	PR	Oil	RE-FRAC, 6/10/2004 00:00			Flowing	
CODELL		1/28/2010	PR	Water					
SUSSEX		7/25/1994	PR	Oil	RECOMPLETION, 6/27/1994 00:00				
SUSSEX		6/15/2004	PR		RE-FRAC, 6/10/2004 00:00				
NIOBRARA		4/6/2016	PR						
NIOBRARA		10/27/2016	SI						
Perforation Data									
Linked Zone			Bnch/Stg	Entered Shot Total	Top (ftKB)		Btm (ftKB)		Date
SUSSEX, ORIGINAL HOLE				14	4,325.00		4,369.00		6/27/1994
CODELL, ORIGINAL HOLE				44	6,919.00		6,930.00		6/18/2004
CODELL, ORIGINAL HOLE				40	6,920.00		6,930.00		10/29/1992
Stimulation Intervals									
Zone				Start Date		Top (ftKB)		Btm (ftKB)	
SUSSEX, ORIGINAL HOLE				6/28/1994		4,325.0		4,369.0	
CODELL, ORIGINAL HOLE				6/29/2004		6,919.0		6,930.0	
CODELL, ORIGINAL HOLE				11/4/1992		6,920.0		6,930.0	
Other In Hole									
Run Date		Des				OD (in)	Top (ftKB)		Btm (ftKB)
Logs									
Date		Type				Top, MD (ftKB)		Btm, MD (ftKB)	
10/24/1992		COMPENSATED DENSITY				3,900.0		7,065.0	
10/24/1992		INDUCTION				4,100.0		4,550.0	
10/29/1992		CEMENT BOND				3,650.0		7,001.0	
6/27/1994		CEMENT BOND				3,500.0		4,402.0	
8/21/2018		GYRO				13.0		6,850.0	
Plug Back Total Depths									
Date		Type		Com				Depth (ftKB)	
10/25/1992		GUIDE SHOE						7,014.0	