



January 16, 2019

Kate Graves
Reclamation Representative
Kerr-McGee Oil & Gas Onshore LP
501 N Division Blvd
Platteville, Colorado 80651

**RE: Colorado Oil & Gas Conservation Commission (COGCC)
Form 4 (Interim Reclamation Completion Notice)
REYNOLDS CATTLE TANK BATTERY 31C-23HZ (437060)
Kerr-McGee Oil & Gas Onshore LP (Operator: 47120)**

Dear Ms Graves:

Apex Companies, LLC (Apex) is presenting this letter to Kerr-McGee Oil & Gas Onshore LP (Kerr-McGee) documenting the results of a vegetation assessment that demonstrates successful completion of interim reclamation efforts, per COGCC Rule 1003, on the above-referenced location in Weld County, Colorado. Attached is a topographic location map, which identifies the referenced location.

Based on site visits and the completed vegetation assessment, Apex inspectors confirmed that the unused portions of the reduced production footprint have been regraded and returned by the landowner to cropland and agricultural use. Based on this result, interim reclamation as defined by COGCC Rule 1003.e (1) has been achieved. Photographs required by Rule 1003.e (3) are also attached along with a site map illustrating photo origins.

On June 15, 2018 the site was visited and four photographs documenting crop establishment on all sides of the location were taken along with one photograph illustrating planted crops.

Apex appreciates the opportunity to provide environmental consulting services to Kerr-McGee with this project. Should you have any questions or require additional information, please don't hesitate to contact me.

Sincerely,
Apex Companies, LLC

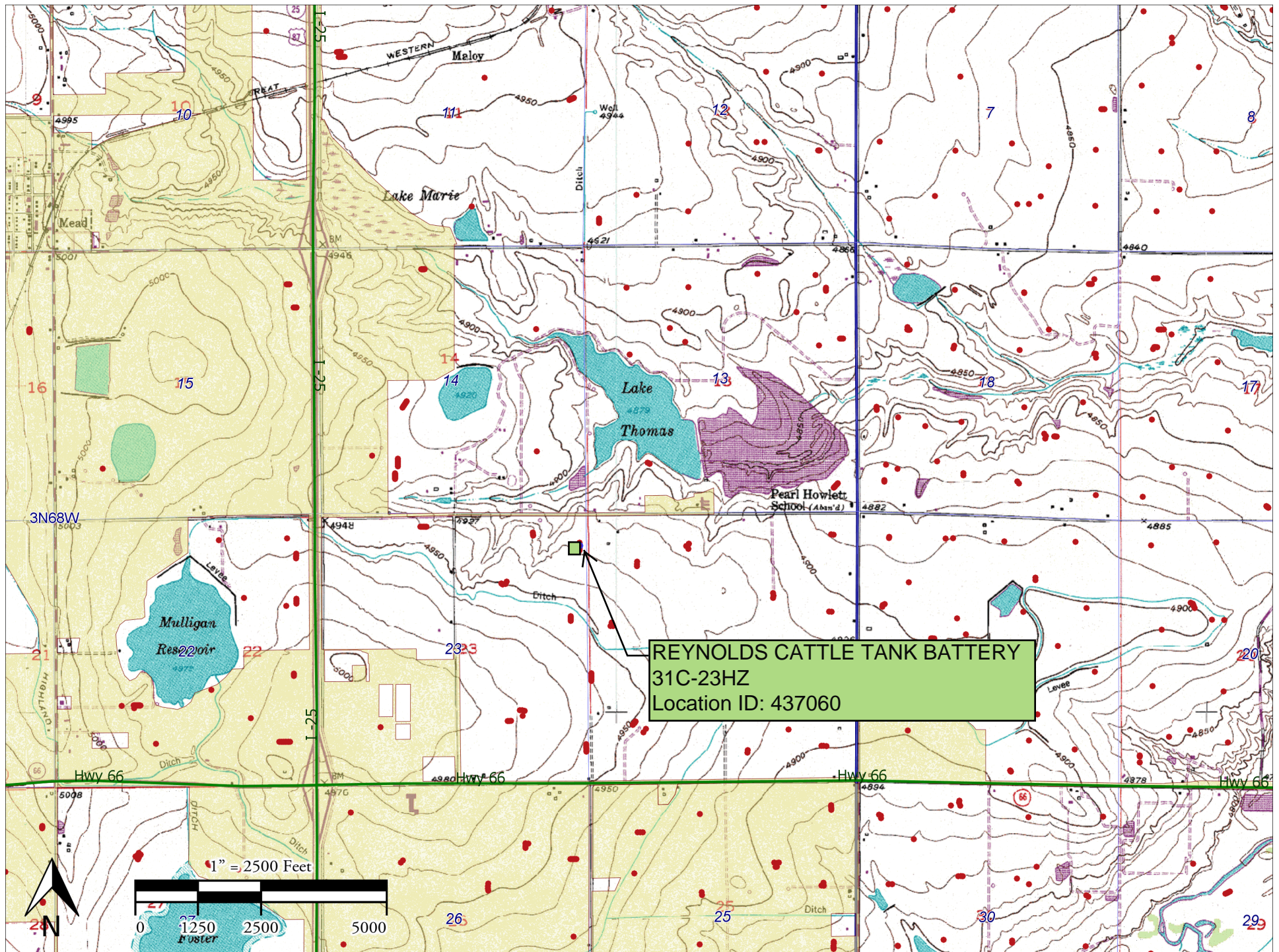
A handwritten signature in black ink, appearing to read 'Chris Hines', written over a horizontal line.

Chris Hines
Project Manager
970-773-9865
chris.hines@apexcoss.com

Attachments:

1. Topographic Location Map
2. Vegetation Survey Site Map
3. Vegetation Survey Photos

REYNOLDS CATTLE TANK BATTERY 31C-23HZ (437060) Topographical Location Map





Kerr-McGee Oil & Gas Onshore LP

REYNOLDS CATTLE TANK BATTERY 31C-23HZ
(437060)

● Crop Photo Point

→ Cardinal Direction
Photos

Legal Description: NENE, Sec. 23, T3N-R68W

County: Weld

Land Use: Crop Land

Inspector: A. Gibbard

Assessment Date: 06/15/2018



Vegetation Assessment Photo Log

Date Completed - 06/15/2018

Client - Kerr-McGee Oil & Gas Onshore LP

Location Name (ID) - REYNOLDS CATTLE TANK BATTERY 31C-23HZ (437060)



Photo Point A: North of Disturbance - Facing South



Photo Point B: South of Disturbance - Facing North



Photo Point A: West of Disturbance - Facing East



Photo Point B: East of Disturbance - Facing West

Vegetation Assessment Photo Log

Date Completed - 06/15/2018

Client - Kerr-McGee Oil & Gas Onshore LP

Location Name (ID) - REYNOLDS CATTLE TANK BATTERY 31C-23HZ (437060)



Photo Point C: Crop Vegetation Photo