



July 13, 2018

Kate Graves
Reclamation Representative
Kerr-McGee Oil & Gas Onshore LP
501 N Division Blvd
Platteville, Colorado 80651

**RE: Colorado Oil & Gas Conservation Commission (COGCC)
Form 4 (Interim Reclamation Completion Notice)
HOWARD 9C-22HZ (434535)
Kerr-McGee Oil & Gas Onshore LP (Operator: 47120)**

Dear Ms. Graves:

Apex Companies, LLC (Apex) is presenting this letter to Kerr-McGee Oil & Gas Onshore LP (Kerr-McGee) documenting the results of a vegetation assessment that demonstrates successful completion of interim reclamation efforts, per COGCC Rule 1003, on the above-referenced location in Weld County, Colorado. Attached is a topographic location map, which identifies the referenced location.

Based on site visits and the completed vegetation assessment, Apex inspectors confirmed that the unused portions of the reduced production footprint have been regraded and returned by the landowner to cropland and agricultural use. Based on this result, interim reclamation as defined by COGCC Rule 1003.e (1) has been achieved. Photographs required by Rule 1003.e (3) are attached, along with a site map that illustrates the photo point locations.

On June 5, 2018 the site was visited and four photographs documenting crop establishment on all sides of the location were taken, along with one photograph illustrating planted crops.

Apex appreciates the opportunity to provide environmental consulting services to Kerr-McGee with this project. Should you have any questions or require additional information, please don't hesitate to contact me.

Sincerely,
Apex Companies, LLC

A handwritten signature in black ink, appearing to read 'Chris Hines', written over a horizontal line.

Chris Hines
Project Manager
970-773-9865
chris.hines@apexcoss.com

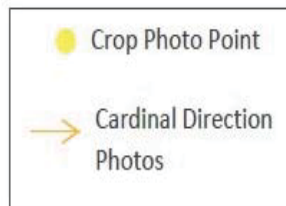
Attachments:

1. Vegetation Survey Site Map
2. Topographic Location Map
3. Vegetation Survey Photos



Vegetation Survey Site Map

Kerr-McGee Oil & Gas Onshore LP
Howard 9C-22HZ
(434535)

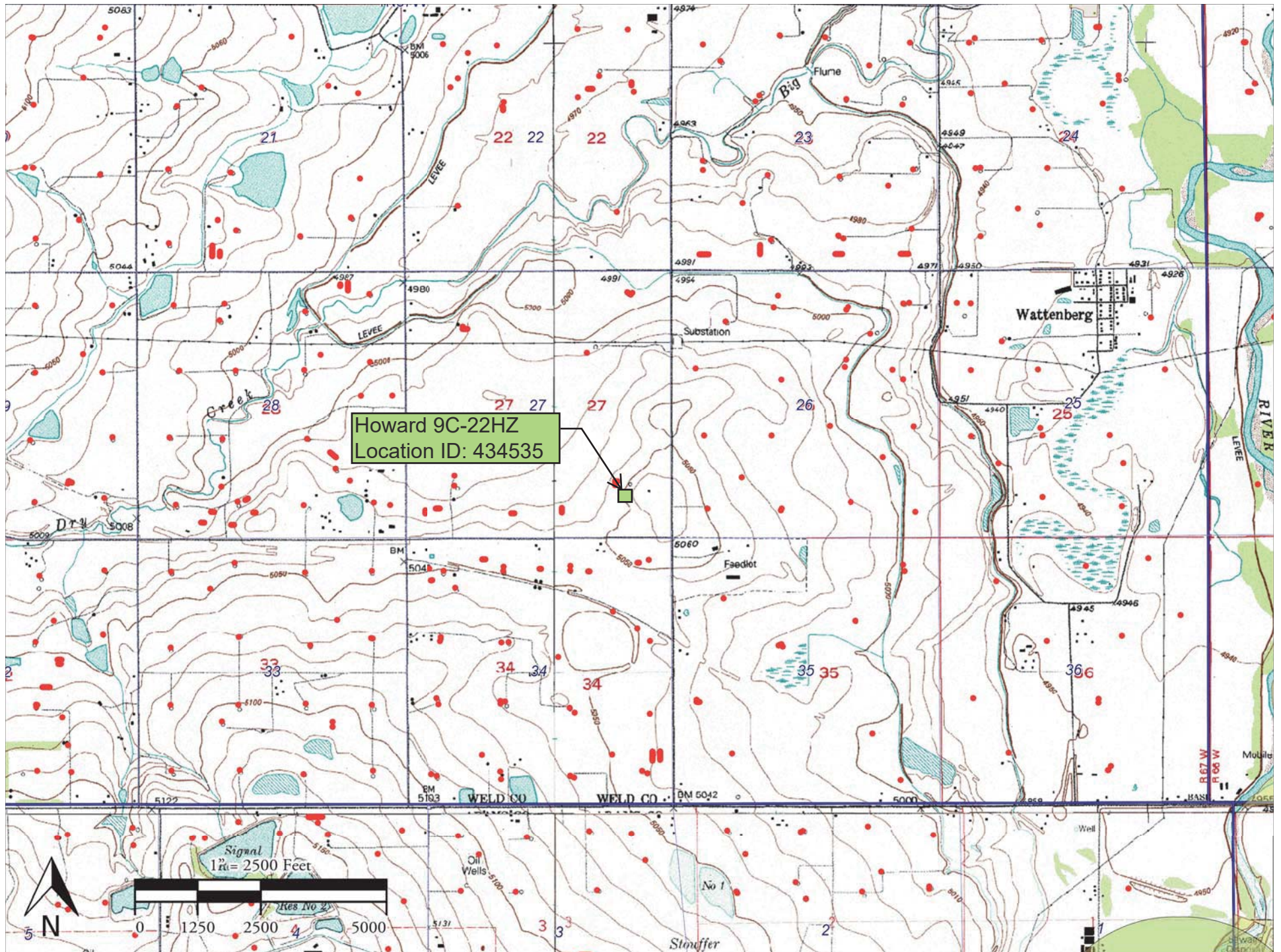


Legal Description: SESE Sec 27, T1N-R67W
County: Weld
Land Use: Crop Land
Inspector: A. Gibbard
Assessment Date: 06/05/2018

Unassociated Location
(319174)



Howard 9C-22HZ (434535) Topographical Location Map



Vegetation Assessment Photo Log

Date Completed - 06/05/2018

Client - Kerr-McGee Oil & Gas Onshore LP

Location Name (ID) - HOWARD 9C-22HZ (434535)



North of Disturbance - Facing South



South of Disturbance - Facing North



West of Disturbance - Facing East



East of Disturbance - Facing West

Vegetation Assessment Photo Log

Date Completed - 06/05/2018

Client - Kerr-McGee Oil & Gas Onshore LP

Location Name (ID) - HOWARD 9C-22HZ (434535)



Crop Vegetation Photo Point