



February 6, 2019

Kate Graves
Reclamation Representative
Kerr-McGee Oil & Gas Onshore LP
501 N Division Blvd.
Platteville, Colorado 80651

**RE: Colorado Oil & Gas Conservation Commission (COGCC)
Vegetation Assessment Report (Interim Reclamation Completion Notice)
Dolph Tank Battery 1N-1HZ (436963)
Kerr-McGee Oil & Gas Onshore LP (Operator: 47120)**

Dear Ms. Graves:

Apex Companies, LLC (Apex) is presenting this letter to Kerr-McGee Oil & Gas Onshore LP (Kerr-McGee) documenting the results of a vegetation assessment that demonstrates successful completion of interim reclamation efforts, per COGCC Rule 1003, on the above-referenced location in Weld County, Colorado. Attached is a topographic location map, which identifies the referenced location.

Based on site visits and the completed vegetation assessment, Apex inspectors confirmed that the unused portions of the reduced production footprint have been stabilized and seeded with a mixture consistent with species composition and reseeding practices common to the area.

On July 12, 2018, modified step-point vegetation surveys were conducted on the reclaimed portion of the well pad, and on adjacent reference areas. Foliar and basal cover, along with non-vegetated and noxious weed occurrences, were documented: 100 survey points were recorded within the reclaimed disturbance and 100 survey points were recorded within the reference area. Vegetation survey points were identified using a bullseye target tool. Noxious weeds listed by the Colorado Department of Agriculture were excluded from the vegetative coverage calculations. The survey methodology employed by Apex is based on the *step-point method* described in an interagency technical reference published by the Bureau of Land Management (BLM, 1996).

Survey results indicate the reclaimed area has a foliar vegetative cover that is 229.43% of the reference area. Vegetation survey results are provided in the attached survey summary tables and data sheets. Based on the results of the survey, interim reclamation, as defined by COGCC Rule 1003.e (2), has been achieved. Photographs required by COGCC Rule 1003.e (3) are also attached along with a site map illustrating vegetation survey efforts.

Apex appreciates the opportunity to provide environmental consulting services to Kerr-McGee with this project. Should you have any questions or require additional information, please do not hesitate to contact me.

Sincerely,

Apex Companies, LLC



Adam Roll

Environmental Scientist

970-589-6111

Adam.Roll@apexcoss.com

On behalf of -

Chris Hines

Oil and Gas Program Manager

970-773-9865

Chris.Hines@apexcoss.com

Attachments:

1. Vegetation Survey - Summary of Field Data
2. Topographic Location Map
3. Vegetation Survey Site Map
4. Vegetation Survey Photos
5. Vegetation Survey (Field Data Tables)

Reference:

United States (U.S.) Department of Agriculture (USDA), Forest Service (USFS), Natural Resource Conservation Service (NRCS) and U.S. Department of the Interior (USDOL) Bureau of Land Management (BLM). "Sampling Vegetation Attributes, Interagency Technical Reference, 1996 (Revised in 1997, and 1999)". USDOL BLM Technical References #1734-4.

Date Accessed: 2 August, 2017

Vegetation Survey - Summary of Field Data

Client	Kerr-McGee Oil & Gas Onshore LP
COGCC Location Name (ID)	DOLPH TANK BATTERY 1N-1HZ (436963)
Assessment Date	7/12/2018
Inspector Name	Adam Roll

Based on the survey methodology, the foliar cover (%) in each survey area is calculated by summing the total number of foliar occurrences, excluding noxious weeds, and dividing by the total occurrences in the transects. For this location:

Reclaim Area (Foliar Cover)	Reference Area (Foliar Cover)
$(60 + 18 + 0) / 187 =$ 41.71%	$(22 + 14 + 0) / 198 =$ 18.18%

For purposes of this assessment, the undesirable foliar cover (%) is calculated by summing the total number of foliar occurrences of Kochia (*Kochia scoparia*) and Russian thistle (*Salsola L.*), and dividing by the total occurrences in the transects, excluding noxious weeds. For this location:

Reclaim Area (Undesirable Foliar Cover)	Reference Area (Undesirable Foliar Cover)
$5 / (60 + 18 + 0) =$ 6.41%	$0 / (22 + 14 + 0) =$ 0.00%

The percent of reference used to evaluate the reclamation area for compliance with COGCC Rule 1003.e(2) is calculated by dividing the foliar cover (%) in the reclaim area by the foliar cover (%) in the reference area. For this location:

Percent of Reference (Reclaim % / Reference %)
$41.71\% / 18.18\% =$ 229.43%

Reclaim Area Vegetation

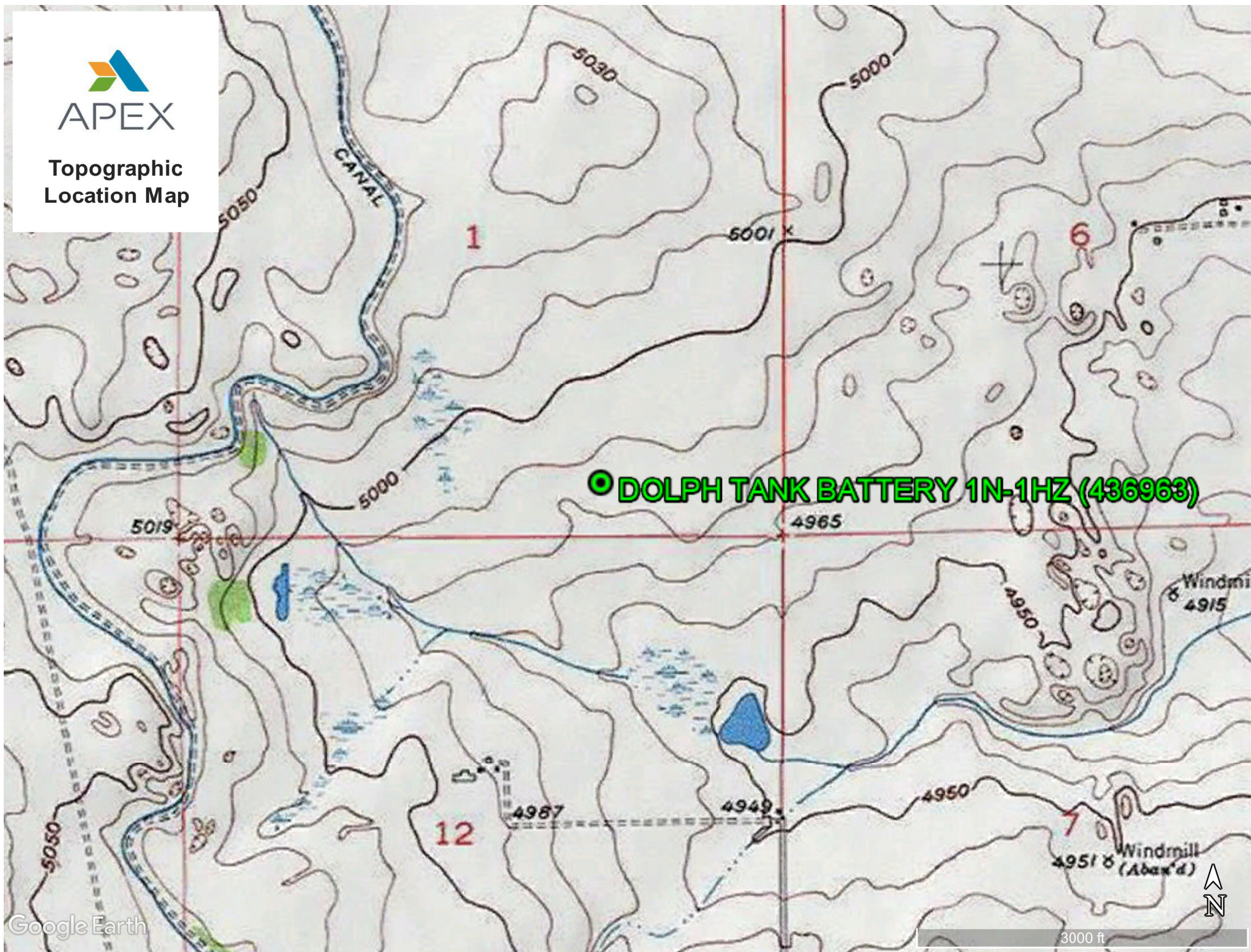
Desirable Foliar Cover	39.04%
Desirable Basal Cover	30.48%
Non Vegetated	18.72%
Noxious Weed Cover	7.49%
Undesirable Cover	4.28%
Quality Assurance Total <i>(must equal 100)</i>	100.00%
Grass (Foliar)	60
Forb (Foliar)	18
Shrubs (Foliar)	0
Noxious Weed (Foliar)	9
Grass (Basal)	40
Forb (Basal)	20
Shrubs (Basal)	0
Noxious Weed (Basal)	5
Bare Ground	9
Litter	26
Rock	0
Total Occurrences	187

Reference Area Vegetation

Desirable Foliar Cover	18.18%
Desirable Basal Cover	9.09%
Non Vegetated	2.02%
Noxious Weed Cover	70.71%
Undesirable Cover	0.00%
Quality Assurance Total <i>(must equal 100)</i>	100.00%
Grass (Foliar)	22
Forb (Foliar)	14
Shrubs (Foliar)	0
Noxious Weed (Foliar)	62
Grass (Basal)	10
Forb (Basal)	8
Shrubs (Basal)	0
Noxious Weed (Basal)	78
Bare Ground	1
Litter	3
Rock	0
Total Occurrences	198



Topographic
Location Map

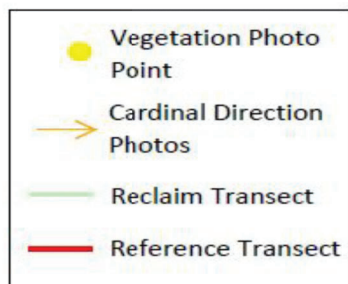




Vegetation Survey Site Map

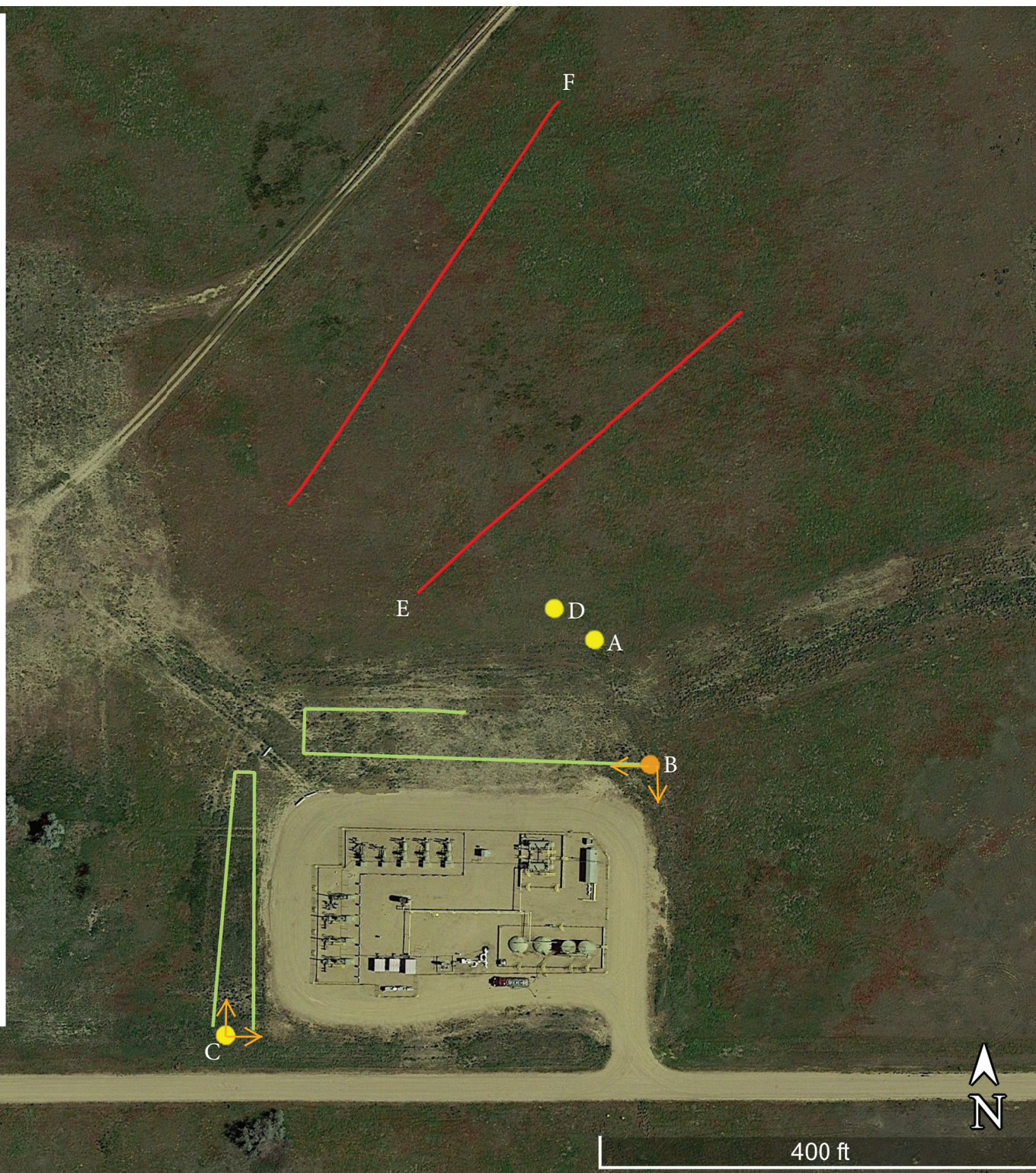
Kerr-McGee
Oil & Gas Onshore LP

Dolph Tank Battery 1N-1HZ
(436963)



Legal Description: SWSE, Sec. 1, T2N-R66W
County: Weld
Land Use: Non-CropLand
Reference Area Cover: 18.18%
Reclaim Area Cover: 41.71%
Cover Ratio (Reclaim/Reference): 229.43%
Inspector: Adam Roll
Assessment Date: 7/12/2018
Aerial Imagery Date: 5/31/2018

**Please reference coordinate disclaimer on the photo log pages.*



Vegetation Assessment Photo Log

Date Completed - 07/12/2018

Client - Kerr-McGee Oil & Gas Onshore LP

Location Name (ID) - DOLPH TANK BATTERY 1N-1HZ (436963)



Photo Point A: Edge of Disturbance - Facing West

*Geographic coordinates provided in the borders of all attached photos are based on points identified by the mobile phone or tablet which collected the photo. Coordinate accuracy in this format is typically no greater than 5 meters, while the points illustrated in the site diagram associated with this submittal were collected with a high accuracy GPS unit with sub-meter accuracy. Discrepancies between the site diagram and photo coordinates will exist.

Vegetation Assessment Photo Log

Date Completed - 07/12/2018

Client - Kerr-McGee Oil & Gas Onshore LP

Location Name (ID) - DOLPH TANK BATTERY 1N-1HZ (436963)



Photo Point B: North of Disturbance - Facing South



Photo Point C: South of Disturbance - Facing North



Photo Point C: West of Disturbance - Facing East



Photo Point B: East of Disturbance - Facing West

Vegetation Assessment Photo Log

Date Completed - 07/12/2018

Client - Kerr-McGee Oil & Gas Onshore LP

Location Name (ID) - DOLPH TANK BATTERY 1N-1HZ (436963)



Photo Point C: Reclaim Area Vegetation - Facing North

Vegetation Assessment Photo Log

Date Completed - 07/12/2018

Client - Kerr-McGee Oil & Gas Onshore LP

Location Name (ID) - DOLPH TANK BATTERY 1N-1HZ (436963)



Photo Point C: Reclaim Transect 1 - Facing North



Photo Point B: Reclaim Transect 2 - Facing West

Vegetation Assessment Photo Log

Date Completed - 07/12/2018

Client - Kerr-McGee Oil & Gas Onshore LP

Location Name (ID) - DOLPH TANK BATTERY 1N-1HZ (436963)



Photo Point D: Reference Area Vegetation - Facing North

Vegetation Assessment Photo Log

Client - Kerr-McGee Oil & Gas Onshore LP



Date Completed - 07/12/2018

Location Name (ID) - DOLPH TANK BATTERY 1N-1HZ (436963)

APEX



Transect Photo E: Reference Transect 1 - Facing Northeast



Transect Photo F: Reference Transect 2 - Facing Southwest

Vegetation Survey (Field Data Table)

Client: Kerr-McGee Oil & Gas Onshore LP
 COGCC Location Name (ID): DOLPH TANK BATTERY 1N-1HZ (436963)
 Transect ID: Reclaim_Transect_1 Length: 481 ft.
 Assessment Date: 7/12/2018
 Inspector: ADAM ROLL

Point	Type	Foliar	Species	Type	Basal	Species
1	Foliar			Non_Vegetative	Litter	Litter
2	Foliar	Grass	Thinopyrum intermedia	Non_Vegetative	Litter	Litter
3	Foliar			Non_Vegetative	Litter	Litter
4	Foliar			Non_Vegetative	Litter	Litter
5	Foliar			Non_Vegetative	Litter	Litter
6	Foliar	Grass	Thinopyrum intermedia	Non_Vegetative	Litter	Litter
7	Foliar	Grass	Thinopyrum intermedia	Basal	Grass	Thinopyrum intermedia
8	Foliar	Grass	Bromus inermis	Basal	Grass	Bromus inermis
9	Foliar	Grass	Thinopyrum intermedia	Basal	Forb	Croton texensis
10	Foliar	Grass	Thinopyrum intermedia	Basal	Grass	Thinopyrum intermedia
11	Foliar	Grass	Bromus inermis	Basal	Grass	Bromus inermis
12	Foliar	Grass	Thinopyrum intermedia	Basal	Forb	Croton texensis
13	Foliar	Grass	Thinopyrum intermedia	Basal	Grass	Thinopyrum intermedia
14	Foliar	Grass	Thinopyrum intermedia	Basal	Grass	Thinopyrum intermedia
15	Foliar	Grass	Thinopyrum intermedia	Basal	Grass	Thinopyrum intermedia
16	Foliar	Grass	Thinopyrum intermedia	Basal	Grass	Thinopyrum intermedia
17	Foliar	Grass	Thinopyrum intermedia	Non_Vegetative	Litter	Litter
18	Foliar	Grass	Thinopyrum intermedia	Non_Vegetative	Litter	Litter
19	Foliar	Grass	Thinopyrum intermedia	Basal	Grass	Bromus inermis
20	Foliar	Grass	Thinopyrum intermedia	Non_Vegetative	Litter	Litter
21	Foliar	Grass	Thinopyrum intermedia	Basal	Grass	Thinopyrum intermedia
22	Foliar	Grass	Thinopyrum intermedia	Non_Vegetative	Litter	Litter
23	Foliar	Grass	Thinopyrum intermedia	Non_Vegetative	Litter	Litter
24	Foliar	Forb	Croton texensis	Basal	Forb	Croton texensis
25	Foliar	Other	Virginia groundcherry	Basal	Other	Virginia groundcherry
26	Foliar	Noxious_Weed_C	Bromus tectorum	Basal	Noxious_Weed_C	Bromus tectorum
27	Foliar	Grass	Thinopyrum intermedia	Non_Vegetative	Litter	Litter
28	Foliar	Grass	Thinopyrum intermedia	Basal	Grass	Thinopyrum intermedia
29	Foliar	Grass	Bromus inermis	Basal	Grass	Bromus inermis
30	Foliar	Grass	Thinopyrum intermedia	Basal	Grass	Thinopyrum intermedia
31	Foliar	Grass	Thinopyrum intermedia	Basal	Grass	Thinopyrum intermedia
32	Foliar	Grass	Thinopyrum intermedia	Non_Vegetative	Litter	Litter
33	Foliar	Grass	Bromus inermis	Basal	Grass	Bromus inermis
34	Foliar	Grass	Bromus inermis	Basal	Grass	Bromus inermis
35	Foliar	Other	Virginia groundcherry	Basal	Other	Virginia groundcherry
36	Foliar	Grass	Bromus inermis	Basal	Grass	Bromus inermis
37	Foliar	Grass	Bromus inermis	Non_Vegetative	Litter	Litter
38	Foliar	Grass	Bromus inermis	Basal	Grass	Bromus inermis
39	Foliar			Non_Vegetative	Litter	Litter
40	Foliar	Grass	Thinopyrum intermedia	Non_Vegetative	Litter	Litter
41	Foliar	Grass	Bromus inermis	Basal	Grass	Bromus inermis
42	Foliar	Grass	Bromus inermis	Basal	Grass	Bromus inermis
43	Foliar	Forb	Argemone polyanthemus	Basal	Forb	Argemone polyanthemus
44	Foliar	Grass	Thinopyrum intermedia	Basal	Grass	Thinopyrum intermedia
45	Foliar	Grass	Thinopyrum intermedia	Basal	Grass	Thinopyrum intermedia
46	Foliar			Non_Vegetative	Litter	Litter
47	Foliar	Grass	Bromus inermis	Basal	Grass	Bromus inermis
48	Foliar	Noxious_Weed_C	Bromus tectorum	Basal	Noxious_Weed_C	Bromus tectorum
49	Foliar	Grass	Thinopyrum intermedia	Basal	Grass	Thinopyrum intermedia
50	Foliar	Forb	Kochia scoparia	Basal	Forb	Kochia scoparia

Vegetation Survey (Field Data Table)

Client: Kerr-McGee Oil & Gas Onshore LP
 COGCC Location Name (ID): DOLPH TANK BATTERY 1N-1HZ (436963)
 Transect ID: Reclaim_Transect_2 Length: 500 ft.
 Assessment Date: 7/12/2018
 Inspector: ADAM ROLL

Point	Type	Foliar	Species	Type	Basal	Species
1	Foliar	Grass	Sporobolus cryptandrus	Basal	Noxious_Weed_C	Bromus tectorum
2	Foliar	Grass	Thinopyrum intermedia	Basal	Grass	Thinopyrum intermedia
3	Foliar	Grass	Thinopyrum intermedia	Basal	Noxious_Weed_C	Bromus tectorum
4	Foliar	Grass	Distichlis spicata	Basal	Grass	Distichlis spicata
5	Foliar			Non_Vegetative	Litter	Litter
6	Foliar	Grass	Sporobolus cryptandrus	Basal	Grass	Sporobolus cryptandrus
7	Foliar	Grass	Sporobolus airoides	Non_Vegetative	Litter	Litter
8	Foliar	Grass	Thinopyrum intermedia	Basal	Grass	Thinopyrum intermedia
9	Foliar	Grass	Distichlis spicata	Basal	Grass	Distichlis spicata
10	Foliar	Forb	Salsola L	Basal	Forb	Ambrosia psilostachya
11	Foliar	Grass	Thinopyrum intermedia	Non_Vegetative	Bare_Ground	Bare Ground
12	Foliar	Forb	Salsola L	Basal	Forb	Salsola L
13	Foliar	Grass	Bouteloua curtipendula	Basal	Grass	Bouteloua curtipendula
14	Foliar	Forb	Salsola L	Non_Vegetative	Bare_Ground	Bare Ground
15	Foliar			Non_Vegetative	Bare_Ground	Bare Ground
16	Foliar	Forb	Ambrosia psilostachya	Basal	Forb	Ambrosia psilostachya
17	Foliar	Forb	Conyza canadensis	Basal	Forb	Conyza canadensis
18	Foliar			Non_Vegetative	Bare_Ground	Bare Ground
19	Foliar	Forb	Ambrosia psilostachya	Basal	Forb	Ambrosia psilostachya
20	Foliar	Noxious_Weed_C	Bromus tectorum	Non_Vegetative	Bare_Ground	Bare Ground
21	Foliar	Grass	Bromus inermis	Basal	Grass	Bromus inermis
22	Foliar	Grass	Thinopyrum intermedia	Non_Vegetative	Litter	Litter
23	Foliar			Non_Vegetative	Bare_Ground	Bare Ground
24	Foliar	Noxious_Weed_C	Bromus tectorum	Non_Vegetative	Litter	Litter
25	Foliar	Noxious_Weed_C	Bromus tectorum	Non_Vegetative	Litter	Litter
26	Foliar			Non_Vegetative	Litter	Litter
27	Foliar	Grass	Thinopyrum intermedia	Basal	Grass	Thinopyrum intermedia
28	Foliar	Grass	Sporobolus cryptandrus	Basal	Grass	Sporobolus cryptandrus
29	Foliar	Grass	Thinopyrum intermedia	Basal	Grass	Thinopyrum intermedia
30	Foliar	Grass	Bromus inermis	Basal	Grass	Bromus inermis
31	Foliar	Grass	Thinopyrum intermedia	Basal	Grass	Thinopyrum intermedia
32	Foliar	Grass	Thinopyrum intermedia	Basal	Grass	Thinopyrum intermedia
33	Foliar	Forb	Ambrosia psilostachya	Basal	Forb	Ambrosia psilostachya
34	Foliar	Grass	Thinopyrum intermedia	Basal	Grass	Thinopyrum intermedia
35	Foliar	Noxious_Weed_C	Bromus tectorum	Basal	Noxious_Weed_C	Bromus tectorum
36	Foliar	Noxious_Weed_C	Bromus tectorum	Basal	Forb	Conyza canadensis
37	Foliar	Grass	Thinopyrum intermedia	Basal	Grass	Thinopyrum intermedia
38	Foliar	Noxious_Weed_C	Bromus tectorum	Non_Vegetative	Litter	Litter
39	Foliar	Forb	Croton texensis	Basal	Forb	Croton texensis
40	Foliar	Grass	Thinopyrum intermedia	Non_Vegetative	Bare_Ground	Bare Ground
41	Foliar	Forb	Ambrosia psilostachya	Basal	Forb	Ambrosia psilostachya
42	Foliar	Forb	Ambrosia psilostachya	Basal	Forb	Ambrosia psilostachya
43	Foliar			Non_Vegetative	Litter	Litter
44	Foliar	Grass	Thinopyrum intermedia	Basal	Grass	Thinopyrum intermedia
45	Foliar	Grass	Thinopyrum intermedia	Non_Vegetative	Bare_Ground	Bare Ground
46	Foliar	Forb	Croton texensis	Basal	Forb	Croton texensis
47	Foliar	Noxious_Weed_C	Bromus tectorum	Non_Vegetative	Litter	Litter
48	Foliar	Forb	Conyza canadensis	Basal	Forb	Conyza canadensis
49	Foliar	Forb	Kochia scoparia	Basal	Forb	Kochia scoparia
50	Foliar			Non_Vegetative	Bare_Ground	Bare Ground

Vegetation Survey (Field Data Table)

Client: Kerr-McGee Oil & Gas Onshore LP
 COGCC Location Name (ID): DOLPH TANK BATTERY 1N-1HZ (436963)
 Transect ID: Reference_Transect_1 Length: 385 ft.
 Assessment Date: 7/12/2018
 Inspector: ADAM ROLL

Point	Type	Foliar	Species	Type	Basal	Species
1	Foliar	Noxious_Weed_C	Bromus tectorum	Basal	Noxious_Weed_C	Bromus tectorum
2	Foliar	Noxious_Weed_C	Bromus tectorum	Basal	Noxious_Weed_C	Bromus tectorum
3	Foliar	Noxious_Weed_C	Bromus tectorum	Basal	Noxious_Weed_C	Bromus tectorum
4	Foliar	Noxious_Weed_C	Bromus tectorum	Basal	Noxious_Weed_C	Bromus tectorum
5	Foliar	Grass	Sporobolus cryptandrus	Basal	Grass	Sporobolus cryptandrus
6	Foliar	Noxious_Weed_C	Bromus tectorum	Basal	Noxious_Weed_C	Bromus tectorum
7	Foliar	Noxious_Weed_C	Bromus tectorum	Basal	Noxious_Weed_C	Bromus tectorum
8	Foliar	Noxious_Weed_C	Bromus tectorum	Basal	Noxious_Weed_C	Bromus tectorum
9	Foliar	Forb	Croton texensis	Basal	Forb	Croton texensis
10	Foliar	Noxious_Weed_C	Bromus tectorum	Basal	Noxious_Weed_C	Bromus tectorum
11	Foliar	Grass	Buchloe dactyloides	Basal	Grass	Buchloe dactyloides
12	Foliar	Noxious_Weed_C	Bromus tectorum	Basal	Noxious_Weed_C	Bromus tectorum
13	Foliar	Forb	Ambrosia psilostachya	Basal	Forb	Ambrosia psilostachya
14	Foliar	Noxious_Weed_C	Bromus tectorum	Basal	Forb	Ambrosia psilostachya
15	Foliar	Noxious_Weed_C	Bromus tectorum	Basal	Noxious_Weed_C	Bromus tectorum
16	Foliar	Grass	Hesperostipa comata	Basal	Grass	Hesperostipa comata
17	Foliar	Grass	Hesperostipa comata	Basal	Noxious_Weed_C	Bromus tectorum
18	Foliar	Grass	Hesperostipa comata	Basal	Noxious_Weed_C	Bromus tectorum
19	Foliar	Forb	Croton texensis	Non_Vegetative	Litter	Litter
20	Foliar	Forb	Croton texensis	Basal	Grass	Hesperostipa comata
21	Foliar	Noxious_Weed_C	Bromus tectorum	Basal	Noxious_Weed_C	Bromus tectorum
22	Foliar	Noxious_Weed_C	Bromus tectorum	Basal	Noxious_Weed_C	Bromus tectorum
23	Foliar	Grass	Hesperostipa comata	Basal	Noxious_Weed_C	Bromus tectorum
24	Foliar	Noxious_Weed_C	Bromus tectorum	Basal	Noxious_Weed_C	Bromus tectorum
25	Foliar	Noxious_Weed_C	Bromus tectorum	Basal	Noxious_Weed_C	Bromus tectorum
26	Foliar	Noxious_Weed_C	Bromus tectorum	Basal	Noxious_Weed_C	Bromus tectorum
27	Foliar	Grass	Hesperostipa comata	Basal	Grass	Hesperostipa comata
28	Foliar	Noxious_Weed_C	Bromus tectorum	Basal	Noxious_Weed_C	Bromus tectorum
29	Foliar	Noxious_Weed_C	Bromus tectorum	Basal	Noxious_Weed_C	Bromus tectorum
30	Foliar	Grass	Hesperostipa comata	Basal	Noxious_Weed_C	Bromus tectorum
31	Foliar	Noxious_Weed_C	Bromus tectorum	Basal	Noxious_Weed_C	Bromus tectorum
32	Foliar	Grass	Hesperostipa comata	Basal	Grass	Hesperostipa comata
33	Foliar	Noxious_Weed_C	Bromus tectorum	Basal	Noxious_Weed_C	Bromus tectorum
34	Foliar	Grass	Hesperostipa comata	Basal	Noxious_Weed_C	Bromus tectorum
35	Foliar	Noxious_Weed_C	Bromus tectorum	Basal	Noxious_Weed_C	Bromus tectorum
36	Foliar	Noxious_Weed_C	Bromus tectorum	Basal	Noxious_Weed_C	Bromus tectorum
37	Foliar	Noxious_Weed_C	Bromus tectorum	Basal	Noxious_Weed_C	Bromus tectorum
38	Foliar	Noxious_Weed_C	Bromus tectorum	Basal	Noxious_Weed_C	Bromus tectorum
39	Foliar	Noxious_Weed_C	Bromus tectorum	Basal	Noxious_Weed_C	Bromus tectorum
40	Foliar	Forb	Ambrosia psilostachya	Basal	Forb	Ambrosia psilostachya
41	Foliar	Noxious_Weed_C	Bromus tectorum	Basal	Noxious_Weed_C	Bromus tectorum
42	Foliar	Noxious_Weed_C	Bromus tectorum	Basal	Noxious_Weed_C	Bromus tectorum
43	Foliar			Non_Vegetative	Bare_Ground	Bare Ground
44	Foliar	Grass	Hesperostipa comata	Basal	Grass	Hesperostipa comata
45	Foliar	Noxious_Weed_C	Bromus tectorum	Basal	Noxious_Weed_C	Bromus tectorum
46	Foliar	Other	Virginia groundcherry	Basal	Other	Virginia groundcherry
47	Foliar	Other	Virginia groundcherry	Basal	Noxious_Weed_C	Bromus tectorum
48	Foliar	Noxious_Weed_C	Bromus tectorum	Basal	Noxious_Weed_C	Bromus tectorum
49	Foliar	Noxious_Weed_C	Bromus tectorum	Basal	Noxious_Weed_C	Bromus tectorum
50	Foliar			Non_Vegetative	Litter	Litter

Vegetation Survey (Field Data Table)

Client: Kerr-McGee Oil & Gas Onshore LP
 COGCC Location Name (ID): DOLPH TANK BATTERY 1N-1HZ (436963)
 Transect ID: Reference_Transect_2 Length: 435 ft.
 Assessment Date: 7/12/2018
 Inspector: ADAM ROLL

Point	Type	Foliar	Species	Type	Basal	Species
1	Foliar	Noxious_Weed_C	Bromus tectorum	Basal	Noxious_Weed_C	Bromus tectorum
2	Foliar	Noxious_Weed_C	Bromus tectorum	Basal	Noxious_Weed_C	Bromus tectorum
3	Foliar	Noxious_Weed_C	Bromus tectorum	Basal	Noxious_Weed_C	Bromus tectorum
4	Foliar	Noxious_Weed_C	Bromus tectorum	Basal	Noxious_Weed_C	Bromus tectorum
5	Foliar	Noxious_Weed_C	Bromus tectorum	Basal	Noxious_Weed_C	Bromus tectorum
6	Foliar	Noxious_Weed_C	Bromus tectorum	Basal	Noxious_Weed_C	Bromus tectorum
7	Foliar	Grass	Sporobolus cryptandrus	Basal	Grass	Sporobolus cryptandrus
8	Foliar	Grass	Distichlis spicata	Basal	Grass	Distichlis spicata
9	Foliar	Grass	Sporobolus cryptandrus	Basal	Noxious_Weed_C	Bromus tectorum
10	Foliar	Noxious_Weed_C	Bromus tectorum	Basal	Noxious_Weed_C	Bromus tectorum
11	Foliar	Grass	Sporobolus cryptandrus	Basal	Noxious_Weed_C	Bromus tectorum
12	Foliar	Grass	Sporobolus cryptandrus	Basal	Noxious_Weed_C	Bromus tectorum
13	Foliar	Noxious_Weed_C	Bromus tectorum	Basal	Noxious_Weed_C	Bromus tectorum
14	Foliar	Noxious_Weed_C	Bromus tectorum	Basal	Noxious_Weed_C	Bromus tectorum
15	Foliar	Noxious_Weed_C	Bromus tectorum	Basal	Noxious_Weed_C	Bromus tectorum
16	Foliar	Grass	Hesperostipa comata	Basal	Noxious_Weed_C	Bromus tectorum
17	Foliar	Noxious_Weed_C	Bromus tectorum	Basal	Noxious_Weed_C	Bromus tectorum
18	Foliar	Grass	Sporobolus cryptandrus	Basal	Noxious_Weed_C	Bromus tectorum
19	Foliar	Grass	Hesperostipa comata	Basal	Noxious_Weed_C	Bromus tectorum
20	Foliar	Grass	Buchloe dactyloides	Basal	Grass	Buchloe dactyloides
21	Foliar	Grass	Hesperostipa comata	Basal	Noxious_Weed_C	Bromus tectorum
22	Foliar	Grass	Sporobolus cryptandrus	Basal	Noxious_Weed_C	Bromus tectorum
23	Foliar	Noxious_Weed_C	Bromus tectorum	Basal	Noxious_Weed_C	Bromus tectorum
24	Foliar	Forb	Croton texensis	Basal	Forb	Croton texensis
25	Foliar	Noxious_Weed_C	Bromus tectorum	Non_Vegetative	Litter	Litter
26	Foliar	Noxious_Weed_C	Bromus tectorum	Basal	Noxious_Weed_C	Bromus tectorum
27	Foliar	Forb	Croton texensis	Basal	Forb	Croton texensis
28	Foliar	Noxious_Weed_C	Bromus tectorum	Basal	Noxious_Weed_C	Bromus tectorum
29	Foliar	Forb	Croton texensis	Basal	Noxious_Weed_C	Bromus tectorum
30	Foliar	Noxious_Weed_C	Bromus tectorum	Basal	Noxious_Weed_C	Bromus tectorum
31	Foliar	Noxious_Weed_C	Bromus tectorum	Basal	Noxious_Weed_C	Bromus tectorum
32	Foliar	Forb	Croton texensis	Basal	Noxious_Weed_C	Bromus tectorum
33	Foliar	Noxious_Weed_C	Bromus tectorum	Basal	Noxious_Weed_C	Bromus tectorum
34	Foliar	Forb	Opuntia spp	Basal	Forb	Opuntia spp
35	Foliar	Noxious_Weed_C	Bromus tectorum	Basal	Noxious_Weed_C	Bromus tectorum
36	Foliar	Noxious_Weed_C	Bromus tectorum	Basal	Noxious_Weed_C	Bromus tectorum
37	Foliar	Noxious_Weed_C	Bromus tectorum	Basal	Noxious_Weed_C	Bromus tectorum
38	Foliar	Noxious_Weed_C	Bromus tectorum	Basal	Noxious_Weed_C	Bromus tectorum
39	Foliar	Noxious_Weed_C	Bromus tectorum	Basal	Noxious_Weed_C	Bromus tectorum
40	Foliar	Noxious_Weed_C	Bromus tectorum	Basal	Noxious_Weed_C	Bromus tectorum
41	Foliar	Noxious_Weed_C	Bromus tectorum	Basal	Noxious_Weed_C	Bromus tectorum
42	Foliar	Noxious_Weed_C	Bromus tectorum	Basal	Noxious_Weed_C	Bromus tectorum
43	Foliar	Noxious_Weed_C	Bromus tectorum	Basal	Noxious_Weed_C	Bromus tectorum
44	Foliar	Noxious_Weed_C	Bromus tectorum	Basal	Noxious_Weed_C	Bromus tectorum
45	Foliar	Forb	Lactuca serriola	Basal	Noxious_Weed_C	Bromus tectorum
46	Foliar	Noxious_Weed_C	Bromus tectorum	Basal	Noxious_Weed_C	Bromus tectorum
47	Foliar	Noxious_Weed_C	Bromus tectorum	Basal	Noxious_Weed_C	Bromus tectorum
48	Foliar	Noxious_Weed_C	Bromus tectorum	Basal	Noxious_Weed_C	Bromus tectorum
49	Foliar	Noxious_Weed_C	Bromus tectorum	Basal	Noxious_Weed_C	Bromus tectorum
50	Foliar	Forb	Ambrosia psilostachya	Basal	Noxious_Weed_C	Bromus tectorum