



September 6, 2018

Kate Graves  
Reclamation Representative  
Kerr-McGee Oil & Gas Onshore LP  
501 N Division Blvd  
Platteville, Colorado 80651

**RE: Colorado Oil & Gas Conservation Commission (COGCC)  
Vegetation Assessment Report (Interim Reclamation Completion Notice)  
BEEBE DRAW UPRR-63N65W 17SWNE (327128)  
Kerr-McGee Oil & Gas Onshore LP (Operator: 47120)**

Dear Ms. Graves:

Apex Companies, LLC (Apex) is presenting this letter to Kerr-McGee Oil & Gas Onshore LP (Kerr-McGee) documenting the results of a vegetation assessment that demonstrates successful completion of interim reclamation efforts, per COGCC Rule 1003, on the above-referenced location in Weld County, Colorado. Attached is a topographic location map, which identifies the referenced location.

Based on site visits and the completed vegetation assessment, Apex inspectors confirmed that the unused portions of the reduced production footprint have been stabilized, and seeded with a mixture consistent with species composition and reseeding practices common to the area.

On June 11, 2018, modified step-point vegetation surveys were conducted on the reclaimed portion of the well pad, and on adjacent reference areas. Foliar and basal cover, along with non-vegetated, and noxious weed occurrences were documented; 100 survey points were recorded within the reclaimed disturbance and 100 survey points were recorded within the reference area. Vegetation survey points were identified using a bullseye target tool. Noxious weeds listed by the Colorado Department of Agriculture were excluded from the vegetative coverage calculations. The survey methodology employed by Apex is based on the *step-point method* described in an interagency technical reference published by the Bureau of Land Management (BLM, 1996).

Survey results indicate the reclaimed area has a foliar vegetative cover that is 106.79% of the reference area. Vegetation survey results are provided in the attached survey summary tables and data sheets. Based on the results of the survey, interim reclamation as defined by COGCC Rule 1003.e (2) has been achieved. Photographs required by COGCC Rule 1003.e (3) are also attached along with a site map illustrating vegetation survey efforts.

Apex appreciates the opportunity to provide environmental consulting services to Kerr-McGee with this project. Should you have any questions or require additional information, please don't hesitate to contact me.

Sincerely,  
**Apex Companies, LLC**



Chris Hines  
Project Manager  
970-773-9865  
[Chris.Hines@apexcos.com](mailto:Chris.Hines@apexcos.com)

**Attachments:**

1. Vegetation Survey Summary of Field Data
2. Vegetation Survey Site Map
3. Topographic Location Map
4. Vegetation Survey Photos
5. Vegetation Survey Field Data Tables

**Reference:**

United States (U.S.) Department of Agriculture (USDA), Forest Service (USFS), Natural Resource Conservation Service (NRCS) and U.S. Department of the Interior (USDOI) Bureau of Land Management (BLM). "Sampling Vegetation Attributes, Interagency Technical Reference, 1996 (Revised in 1997, and 1999)". USDOI BLM Technical References #1734-4.

<https://www.blm.gov/nstc/library/pdf/samplveg.pdf>

Date Accessed: 2 August, 2017



## Vegetation Survey (Summary of Field Data)

<b>Client</b>	Kerr-McGee
<b>COGCC Location Name (ID)</b>	BEEBE DRAW UPRR-63N65W 17SWNE (327128)
<b>Assessment Date</b>	6/11/2018
<b>Inspector Name</b>	ADAM ROLL

Based on the survey methodology, the Foliar Cover % in each survey area is calculated by summing the total number of foliar occurrences, excluding noxious weeds, and dividing by the total occurrences in the transect. For this location:

<b>Reclaim Area (Foliar Cover)</b>	<b>Reference Area (Foliar Cover)</b>
$(12 + 17 + 0) / 192 =$ <b>15.10%</b>	$(13 + 2 + 13) / 198 =$ <b>14.14%</b>

For purposes of this assessment, the undesirable foliar cover is calculated by summing the total number of foliar occurrences of *Kochia* and *Russian thistle*, and dividing by the total foliar occurrences in the transect, excluding noxious weeds. For this location:

<b>Reclaim Area (Undesirable Foliar Cover)</b>	<b>Reference Area (Undesirable Foliar Cover)</b>
$0 / (12 + 17 + 0) =$ <b>0.00%</b>	$0 / (13 + 2 + 13) =$ <b>0.00%</b>

The Percent of Reference (%) used to evaluate each reclaim area for compliance with COGCC Rule 1003.e(2) for determining interim reclamation success, is calculated by dividing the Foliar Cover % in the Reclaim Area by the Foliar Cover % in the Reference Area. For this location:

<b>Percent of Reference (Reclaim % / Reference %)</b>
$15.10\% / 14.14\% =$ <b>106.79%</b>

### Reclaim Area Vegetation

Foliar Cover	15.10%
Basal Cover	27.60%
Non Vegetated	9.90%
Noxious Weeds	47.40%
Undesirable	0.00%
<b>QA Total</b> (must equal 100)	<b>100.00%</b>
Grass (Foliar)	12
Forb (Foliar)	17
Shrubs (Foliar)	0
Noxious Weed (Foliar)	63
Grass (Basal)	28
Forb (Basal)	25
Shrubs (Basal)	0
Noxious Weed (Basal)	28
Bare Ground	4
Litter	15
Rock	0
<b>Total Occurrences</b>	<b>192</b>

### Reference Area Vegetation

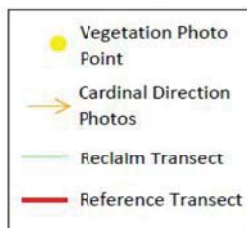
Foliar Cover	14.14%
Basal Cover	18.69%
Non Vegetated	1.52%
Noxious Weeds	65.66%
Undesirable	0.00%
<b>QA Total</b> (must equal 100)	<b>100.00%</b>
Grass (Foliar)	13
Forb (Foliar)	2
Shrubs (Foliar)	13
Noxious Weed (Foliar)	70
Grass (Basal)	12
Forb (Basal)	8
Shrubs (Basal)	17
Noxious Weed (Basal)	60
Bare Ground	0
Litter	3
Rock	0
<b>Total Occurrences</b>	<b>198</b>



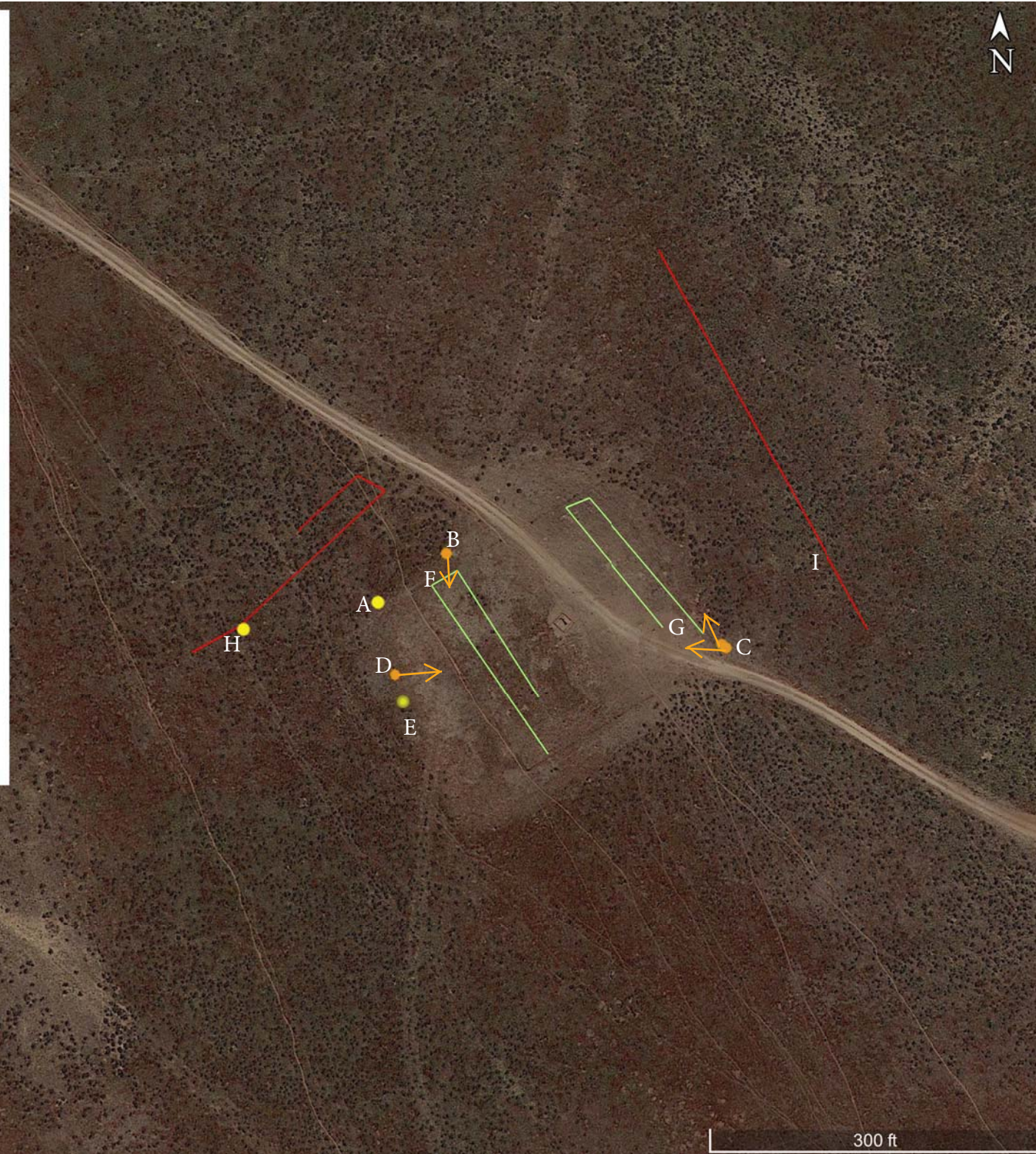


## Kerr-McGee Oil & Gas Onshore LP

BEEBE DRAW UPRR-63N65W 17SWNE  
(327128)



Legal Description: SWNE, Sec. 17, T3N-R65W  
County: Weld  
Land Use: Rangeland  
Reference Area Cover: 14.14%  
Reclamation Cover: 15.10%  
Cover Ratio (Reclaim/Reference): 106.79%  
Inspector: A. Roll  
Assessment Date: 06/11/2018



\*Aerial imagery from 06/2017

Google Earth

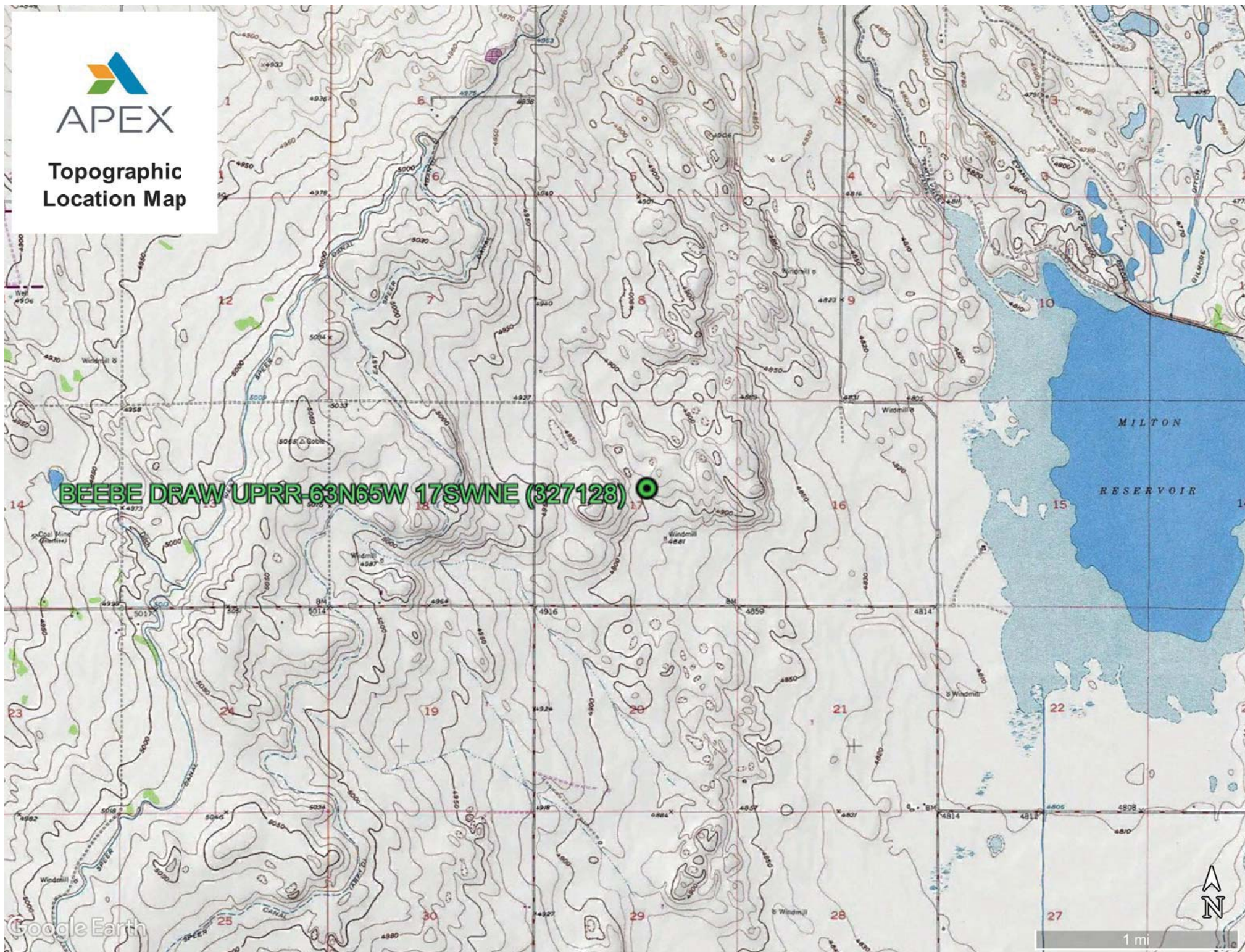
300 ft





# Topographic Location Map

BEEBE DRAW UPRR-63N65W 17SWNE (327128) ●





# Vegetation Assessment Photo Log

Date Completed - 06/11/2018

Client - Kerr-McGee Oil & Gas Onshore LP

Location Name (ID) - BEEBE DRAW UPRR-63N65W 17SWNE (327128)



Photo Point A: Edge of Disturbance - Facing South



# Vegetation Assessment Photo Log

Date Completed - 06/11/2018

Client - Kerr-McGee Oil & Gas Onshore LP

Location Name (ID) - BEEBE DRAW UPRR-63N65W 17SWNE (327128)



Photo Point B: North of Disturbance - Facing South



Photo Point C: South of Disturbance - Facing North



Photo Point D: West of Disturbance - Facing East



Photo Point C: East of Disturbance - Facing West



# Vegetation Assessment Photo Log

Date Completed - 06/11/2018

Client - Kerr-McGee Oil & Gas Onshore LP

Location Name (ID) - BEEBE DRAW UPRR-63N65W 17SWNE (327128)



Photo Point E: Reclaim Area Vegetation Photo Point



# Vegetation Assessment Photo Log

Date Completed - 06/11/2018

Client - Kerr-McGee Oil & Gas Onshore LP

Location Name (ID) - BEEBE DRAW UPRR-63N65W 17SWNE (327128)



Transect Photo F: Reclaim Transect 1 - Facing South



Transect Photo G: Reclaim Transect 2 -Facing North



# Vegetation Assessment Photo Log

Date Completed - 06/11/2018

Client - Kerr-McGee Oil & Gas Onshore LP

Location Name (ID) - BEEBE DRAW UPRR-63N65W 17SWNE (327128)



Photo Point H: Reference Area Vegetation Photo Point



# Vegetation Assessment Photo Log

Client - Kerr-McGee Oil & Gas Onshore LP



Date Completed - 06/11/2018

Location Name (ID) - BEEBE DRAW UPRR-63N65W 17SWNE (327128)

APEX



Transect Photo H: Reference Transect 1 - Facing East



Transect Photo I: Reference Transect 2 - Facing North





Client: Kerr-McGee  
 COGCC Location Name (ID): BEEBE DRAW UPRR-63N65W 17SWNE(327128)  
 Transect ID: Reclaim\_Transect\_1 Length: 300  
 Assessment Date: 6/11/2018  
 Inspector: ADAM ROLL

Point	Type	Foliar	Species	Type	Basal	Species
1	Foliar	Forb	Plantago patagonica	Basal	Forb	Plantago patagonica
2	Foliar	Noxious_Weed_C	Bromus tectorum	Basal	Grass	Buchloe dactyloides
3	Foliar	Noxious_Weed_C	Bromus tectorum	Basal	Forb	Plantago patagonica
4	Foliar	Grass	Agropyron cristatum	Basal	Grass	Agropyron cristatum
5	Foliar	Noxious_Weed_C	Bromus tectorum	Non_Vegetative	Litter	Litter
6	Foliar	Noxious_Weed_C	Bromus tectorum	Basal	Grass	Buchloe dactyloides
7	Foliar	Forb	Plantago patagonica	Basal	Forb	Plantago patagonica
8	Foliar	Grass	Agropyron cristatum	Basal	Grass	Agropyron cristatum
9	Foliar	Noxious_Weed_C	Bromus tectorum	Basal	Forb	Plantago patagonica
10	Foliar	Noxious_Weed_C	Bromus tectorum	Basal	Grass	Buchloe dactyloides
11	Foliar	Noxious_Weed_C	Bromus tectorum	Basal	Noxious_Weed_C	Bromus tectorum
12	Foliar	Forb	Plantago patagonica	Basal	Grass	Agropyron cristatum
13	Foliar	Noxious_Weed_C	Bromus tectorum	Basal	Forb	Plantago patagonica
14	Foliar	Noxious_Weed_C	Bromus tectorum	Non_Vegetative	Litter	Litter
15	Foliar	Forb	Opuntia spp	Basal	Forb	Opuntia spp
16	Foliar	Forb	Plantago patagonica	Basal	Forb	Plantago patagonica
17	Foliar	Noxious_Weed_C	Bromus tectorum	Basal	Noxious_Weed_C	Bromus tectorum
18	Foliar	Noxious_Weed_C	Bromus tectorum	Basal	Forb	Plantago patagonica
19	Foliar	Noxious_Weed_C	Bromus tectorum	Basal	Noxious_Weed_C	Bromus tectorum
20	Foliar	Noxious_Weed_C	Bromus tectorum	Basal	Noxious_Weed_C	Bromus tectorum
21	Foliar	Noxious_Weed_C	Bromus tectorum	Basal	Noxious_Weed_C	Bromus tectorum
22	Foliar	Noxious_Weed_C	Bromus tectorum	Basal	Grass	Agropyron cristatum
23	Foliar	Noxious_Weed_C	Bromus tectorum	Basal	Forb	Plantago patagonica
24	Foliar	Noxious_Weed_C	Bromus tectorum	Non_Vegetative	Litter	Litter
25	Foliar	Noxious_Weed_C	Bromus tectorum	Basal	Forb	Plantago patagonica
26	Foliar	Noxious_Weed_C	Bromus tectorum	Basal	Noxious_Weed_C	Bromus tectorum
27	Foliar	Forb	Plantago patagonica	Basal	Noxious_Weed_C	Bromus tectorum
28	Foliar	Forb	Plantago patagonica	Basal	Grass	Buchloe dactyloides
29	Foliar	Grass	Buchloe dactyloides	Basal	Grass	Buchloe dactyloides
30	Foliar	Forb	Plantago patagonica	Basal	Forb	Plantago patagonica
31	Foliar	Forb	Opuntia spp	Basal	Forb	Opuntia spp
32	Foliar	Noxious_Weed_C	Bromus tectorum	Basal	Grass	Buchloe dactyloides
33	Foliar	Noxious_Weed_C	Bromus tectorum	Non_Vegetative	Litter	Litter
34	Foliar	Noxious_Weed_C	Bromus tectorum	Non_Vegetative	Litter	Litter
35	Foliar	Noxious_Weed_C	Bromus tectorum	Basal	Noxious_Weed_C	Bromus tectorum
36	Foliar	Noxious_Weed_C	Bromus tectorum	Basal	Noxious_Weed_C	Bromus tectorum
37	Foliar	Noxious_Weed_C	Bromus tectorum	Basal	Grass	Agropyron cristatum
38	Foliar	Noxious_Weed_C	Bromus tectorum	Basal	Grass	Buchloe dactyloides
39	Foliar			Non_Vegetative	Bare_Ground	Bare Ground
40	Foliar	Noxious_Weed_C	Bromus tectorum	Non_Vegetative	Litter	Litter
41	Foliar	Noxious_Weed_C	Bromus tectorum	Basal	Noxious_Weed_C	Bromus tectorum
42	Foliar	Noxious_Weed_C	Bromus tectorum	Basal	Noxious_Weed_C	Bromus tectorum
43	Foliar	Grass	Agropyron cristatum	Basal	Grass	Agropyron cristatum
44	Foliar	Forb	Plantago patagonica	Basal	Forb	Plantago patagonica
45	Foliar	Noxious_Weed_C	Bromus tectorum	Basal	Noxious_Weed_C	Bromus tectorum
46	Foliar	Noxious_Weed_C	Bromus tectorum	Basal	Noxious_Weed_C	Bromus tectorum
47	Foliar	Noxious_Weed_C	Bromus tectorum	Basal	Grass	Agropyron cristatum
48	Foliar	Noxious_Weed_C	Bromus tectorum	Basal	Noxious_Weed_C	Bromus tectorum
49	Foliar	Noxious_Weed_C	Bromus tectorum	Basal	Forb	Plantago patagonica
50	Foliar	Noxious_Weed_C	Bromus tectorum	Basal	Noxious_Weed_C	Bromus tectorum





Client: Kerr-McGee  
 COGCC Location Name (ID): BEEBE DRAW UPRR-63N65W 17SWNE(327128)  
 Transect ID: Reclaim\_Transect\_2 Length: 350  
 Assessment Date: 6/11/2018  
 Inspector: ADAM ROLL

Point	Type	Foliar	Species	Type	Basal	Species
1	Foliar			Non_Vegetative	Bare_Ground	Bare Ground
2	Foliar	Noxious_Weed_C	Bromus tectorum	Basal	Grass	Buchloe dactyloides
3	Foliar			Non_Vegetative	Litter	Litter
4	Foliar	Noxious_Weed_C	Bromus tectorum	Non_Vegetative	Litter	Litter
5	Foliar	Noxious_Weed_C	Bromus tectorum	Basal	Noxious_Weed_C	Bromus tectorum
6	Foliar			Non_Vegetative	Bare_Ground	Bare Ground
7	Foliar			Non_Vegetative	Bare_Ground	Bare Ground
8	Foliar	Grass	Buchloe dactyloides	Basal	Grass	Buchloe dactyloides
9	Foliar	Grass	Buchloe dactyloides	Basal	Grass	Buchloe dactyloides
10	Foliar	Grass	Agropyron cristatum	Basal	Grass	Agropyron cristatum
11	Foliar	Noxious_Weed_C	Bromus tectorum	Basal	Forb	Plantago patagonica
12	Foliar			Non_Vegetative	Litter	Litter
13	Foliar	Grass	Buchloe dactyloides	Basal	Grass	Buchloe dactyloides
14	Foliar	Grass	Buchloe dactyloides	Basal	Grass	Buchloe dactyloides
15	Foliar	Noxious_Weed_C	Bromus tectorum	Basal	Grass	Buchloe dactyloides
16	Foliar	Noxious_Weed_C	Bromus tectorum	Basal	Noxious_Weed_C	Bromus tectorum
17	Foliar	Noxious_Weed_C	Bromus tectorum	Basal	Noxious_Weed_C	Bromus tectorum
18	Foliar	Noxious_Weed_C	Bromus tectorum	Basal	Grass	Buchloe dactyloides
19	Foliar	Forb	Plantago patagonica	Basal	Forb	Plantago patagonica
20	Foliar	Forb	Opuntia spp	Basal	Forb	Opuntia spp
21	Foliar	Noxious_Weed_C	Bromus tectorum	Basal	Noxious_Weed_C	Bromus tectorum
22	Foliar	Grass	Buchloe dactyloides	Basal	Grass	Buchloe dactyloides
23	Foliar	Noxious_Weed_C	Bromus tectorum	Basal	Grass	Buchloe dactyloides
24	Foliar	Noxious_Weed_C	Bromus tectorum	Non_Vegetative	Litter	Litter
25	Foliar	Noxious_Weed_C	Bromus tectorum	Basal	Grass	Buchloe dactyloides
26	Foliar			Non_Vegetative	Litter	Litter
27	Foliar	Noxious_Weed_C	Bromus tectorum	Basal	Noxious_Weed_C	Bromus tectorum
28	Foliar	Forb	Plantago patagonica	Basal	Forb	Plantago patagonica
29	Foliar	Noxious_Weed_C	Bromus tectorum	Non_Vegetative	Litter	Litter
30	Foliar	Noxious_Weed_C	Bromus tectorum	Basal	Noxious_Weed_C	Bromus tectorum
31	Foliar	Grass	Buchloe dactyloides	Basal	Grass	Buchloe dactyloides
32	Foliar	Noxious_Weed_C	Bromus tectorum	Basal	Noxious_Weed_C	Bromus tectorum
33	Foliar	Grass	Buchloe dactyloides	Basal	Grass	Buchloe dactyloides
34	Foliar	Noxious_Weed_C	Bromus tectorum	Basal	Forb	Plantago patagonica
35	Foliar	Forb	Plantago patagonica	Basal	Forb	Plantago patagonica
36	Foliar	Noxious_Weed_C	Bromus tectorum	Non_Vegetative	Litter	Litter
37	Foliar	Forb	Opuntia spp	Basal	Forb	Opuntia spp
38	Foliar	Noxious_Weed_C	Bromus tectorum	Basal	Noxious_Weed_C	Bromus tectorum
39	Foliar	Noxious_Weed_C	Bromus tectorum	Basal	Grass	Buchloe dactyloides
40	Foliar	Noxious_Weed_C	Bromus tectorum	Basal	Forb	Plantago patagonica
41	Foliar			Non_Vegetative	Litter	Litter
42	Foliar	Noxious_Weed_C	Bromus tectorum	Basal	Noxious_Weed_C	Bromus tectorum
43	Foliar	Noxious_Weed_C	Bromus tectorum	Non_Vegetative	Litter	Litter
44	Foliar	Noxious_Weed_C	Bromus tectorum	Basal	Noxious_Weed_C	Bromus tectorum
45	Foliar	Noxious_Weed_C	Bromus tectorum	Basal	Noxious_Weed_C	Bromus tectorum
46	Foliar	Other	Clasping pepperweed	Basal	Other	Clasping pepperweed
47	Foliar	Noxious_Weed_C	Bromus tectorum	Basal	Noxious_Weed_C	Bromus tectorum
48	Foliar	Forb	Opuntia spp	Basal	Forb	Opuntia spp
49	Foliar	Noxious_Weed_C	Bromus tectorum	Basal	Forb	Plantago patagonica
50	Foliar	Forb	Plantago patagonica	Basal	Forb	Plantago patagonica





Client: Kerr-McGee  
 COGCC Location Name (ID): BEEBE DRAW UPRR-63N65W 17SWNE(327128)  
 Transect ID: Reference\_Transect\_1 Length: 350  
 Assessment Date: 6/11/2018  
 Inspector: ADAM ROLL

Point	Type	Foliar	Species	Type	Basal	Species
1	Foliar	Noxious_Weed_C	Bromus tectorum	Basal	Noxious_Weed_C	Bromus tectorum
2	Foliar	Noxious_Weed_C	Bromus tectorum	Basal	Noxious_Weed_C	Bromus tectorum
3	Foliar	Noxious_Weed_C	Bromus tectorum	Basal	Noxious_Weed_C	Bromus tectorum
4	Foliar	Grass	Thinopyrum intermedia	Basal	Grass	Thinopyrum intermedia
5	Foliar	Grass	Hesperostipa comata	Basal	Grass	Hesperostipa comata
6	Foliar	Noxious_Weed_C	Bromus tectorum	Basal	Noxious_Weed_C	Bromus tectorum
7	Foliar	Noxious_Weed_C	Bromus tectorum	Basal	Noxious_Weed_C	Bromus tectorum
8	Foliar	Noxious_Weed_C	Bromus tectorum	Basal	Noxious_Weed_C	Bromus tectorum
9	Foliar	Noxious_Weed_C	Bromus tectorum	Basal	Noxious_Weed_C	Bromus tectorum
10	Foliar	Noxious_Weed_C	Bromus tectorum	Basal	Noxious_Weed_C	Bromus tectorum
11	Foliar	Shrub	Artemisia cana	Basal	Shrub	Artemisia cana
12	Foliar	Shrub	Artemisia cana	Basal	Shrub	Artemisia cana
13	Foliar	Noxious_Weed_C	Bromus tectorum	Basal	Noxious_Weed_C	Bromus tectorum
14	Foliar	Noxious_Weed_C	Bromus tectorum	Basal	Noxious_Weed_C	Bromus tectorum
15	Foliar	Noxious_Weed_C	Bromus tectorum	Basal	Noxious_Weed_C	Bromus tectorum
16	Foliar	Noxious_Weed_C	Bromus tectorum	Basal	Noxious_Weed_C	Bromus tectorum
17	Foliar	Shrub	Artemisia cana	Basal	Shrub	Artemisia cana
18	Foliar	Shrub	Artemisia cana	Basal	Noxious_Weed_C	Bromus tectorum
19	Foliar	Noxious_Weed_C	Bromus tectorum	Basal	Shrub	Artemisia cana
20	Foliar	Noxious_Weed_C	Bromus tectorum	Basal	Noxious_Weed_C	Bromus tectorum
21	Foliar	Noxious_Weed_C	Bromus tectorum	Basal	Noxious_Weed_C	Bromus tectorum
22	Foliar	Noxious_Weed_C	Bromus tectorum	Basal	Noxious_Weed_C	Bromus tectorum
23	Foliar	Noxious_Weed_C	Bromus tectorum	Basal	Noxious_Weed_C	Bromus tectorum
24	Foliar	Noxious_Weed_C	Bromus tectorum	Basal	Forb	Opuntia spp
25	Foliar	Noxious_Weed_C	Bromus tectorum	Basal	Noxious_Weed_C	Bromus tectorum
26	Foliar	Noxious_Weed_C	Bromus tectorum	Basal	Forb	Plantago patagonica
27	Foliar	Shrub	Artemisia cana	Basal	Shrub	Artemisia cana
28	Foliar	Noxious_Weed_C	Bromus tectorum	Basal	Noxious_Weed_C	Bromus tectorum
29	Foliar	Grass	Hesperostipa comata	Basal	Grass	Hesperostipa comata
30	Foliar	Other	Clasping pepperweed	Basal	Other	Clasping pepperweed
31	Foliar	Noxious_Weed_C	Bromus tectorum	Basal	Noxious_Weed_C	Bromus tectorum
32	Foliar	Noxious_Weed_C	Bromus tectorum	Basal	Forb	Plantago patagonica
33	Foliar	Forb	Plantago patagonica	Basal	Noxious_Weed_C	Bromus tectorum
34	Foliar	Shrub	Artemisia cana	Basal	Shrub	Artemisia cana
35	Foliar	Noxious_Weed_C	Bromus tectorum	Basal	Noxious_Weed_C	Bromus tectorum
36	Foliar			Non_Vegetative	Litter	Litter
37	Foliar	Shrub	Artemisia cana	Basal	Noxious_Weed_C	Bromus tectorum
38	Foliar	Shrub	Artemisia cana	Basal	Shrub	Artemisia cana
39	Foliar	Noxious_Weed_C	Bromus tectorum	Basal	Noxious_Weed_C	Bromus tectorum
40	Foliar	Noxious_Weed_C	Bromus tectorum	Basal	Noxious_Weed_C	Bromus tectorum
41	Foliar	Shrub	Artemisia cana	Basal	Shrub	Artemisia cana
42	Foliar	Grass	Hesperostipa comata	Basal	Grass	Hesperostipa comata
43	Foliar	Noxious_Weed_C	Bromus tectorum	Basal	Noxious_Weed_C	Bromus tectorum
44	Foliar	Noxious_Weed_C	Bromus tectorum	Basal	Noxious_Weed_C	Bromus tectorum
45	Foliar	Noxious_Weed_C	Bromus tectorum	Basal	Shrub	Artemisia cana
46	Foliar	Noxious_Weed_C	Bromus tectorum	Basal	Grass	Hesperostipa comata
47	Foliar	Noxious_Weed_C	Bromus tectorum	Basal	Noxious_Weed_C	Bromus tectorum
48	Foliar	Shrub	Artemisia cana	Basal	Shrub	Artemisia cana
49	Foliar	Noxious_Weed_C	Bromus tectorum	Basal	Noxious_Weed_C	Bromus tectorum
50	Foliar	Grass	Hesperostipa comata	Basal	Grass	Hesperostipa comata





Client: Kerr-McGee  
COGCC Location Name (ID): BEEBE DRAW UPRR-63N65W 17SWNE(327128)  
Transect ID: Reference\_Transect\_2 Length: 350  
Assessment Date: 6/11/2018  
Inspector: ADAM ROLL

Point	Type	Foliar	Species	Type	Basal	Species
1	Foliar	Noxious_Weed_C	Bromus tectorum	Basal	Noxious_Weed_C	Bromus tectorum
2	Foliar	Noxious_Weed_C	Bromus tectorum	Basal	Noxious_Weed_C	Bromus tectorum
3	Foliar	Noxious_Weed_C	Bromus tectorum	Basal	Forb	Opuntia spp
4	Foliar	Shrub	Artemisia cana	Basal	Noxious_Weed_C	Bromus tectorum
5	Foliar	Grass	Hesperostipa comata	Basal	Noxious_Weed_C	Bromus tectorum
6	Foliar	Grass	Hesperostipa comata	Basal	Grass	Hesperostipa comata
7	Foliar	Grass	Hesperostipa comata	Basal	Noxious_Weed_C	Bromus tectorum
8	Foliar	Grass	Hesperostipa comata	Basal	Grass	Hesperostipa comata
9	Foliar	Noxious_Weed_C	Bromus tectorum	Basal	Noxious_Weed_C	Bromus tectorum
10	Foliar	Noxious_Weed_C	Bromus tectorum	Basal	Grass	Hesperostipa comata
11	Foliar	Noxious_Weed_C	Bromus tectorum	Basal	Forb	Plantago patagonica
12	Foliar	Noxious_Weed_C	Bromus tectorum	Basal	Grass	Hesperostipa comata
13	Foliar	Noxious_Weed_C	Bromus tectorum	Basal	Forb	Plantago patagonica
14	Foliar	Noxious_Weed_C	Bromus tectorum	Basal	Shrub	Artemisia cana
15	Foliar	Noxious_Weed_C	Bromus tectorum	Basal	Other	Clasping pepperweed
16	Foliar	Noxious_Weed_C	Bromus tectorum	Non_Vegetative	Litter	Litter
17	Foliar	Noxious_Weed_C	Bromus tectorum	Basal	Noxious_Weed_C	Bromus tectorum
18	Foliar	Noxious_Weed_C	Bromus tectorum	Basal	Shrub	Artemisia cana
19	Foliar	Noxious_Weed_C	Bromus tectorum	Basal	Other	Clasping pepperweed
20	Foliar	Noxious_Weed_C	Bromus tectorum	Basal	Noxious_Weed_C	Bromus tectorum
21	Foliar	Shrub	Artemisia cana	Basal	Shrub	Artemisia cana
22	Foliar	Noxious_Weed_C	Bromus tectorum	Basal	Shrub	Artemisia cana
23	Foliar	Grass	Hesperostipa comata	Basal	Noxious_Weed_C	Bromus tectorum
24	Foliar	Noxious_Weed_C	Bromus tectorum	Basal	Noxious_Weed_C	Bromus tectorum
25	Foliar	Noxious_Weed_C	Bromus tectorum	Basal	Other	Clasping pepperweed
26	Foliar	Noxious_Weed_C	Bromus tectorum	Basal	Noxious_Weed_C	Bromus tectorum
27	Foliar	Noxious_Weed_C	Bromus tectorum	Basal	Noxious_Weed_C	Bromus tectorum
28	Foliar	Noxious_Weed_C	Bromus tectorum	Basal	Noxious_Weed_C	Bromus tectorum
29	Foliar			Non_Vegetative	Litter	Litter
30	Foliar	Noxious_Weed_C	Bromus tectorum	Basal	Noxious_Weed_C	Bromus tectorum
31	Foliar	Noxious_Weed_C	Bromus tectorum	Basal	Noxious_Weed_C	Bromus tectorum
32	Foliar	Noxious_Weed_C	Bromus tectorum	Basal	Noxious_Weed_C	Bromus tectorum
33	Foliar	Noxious_Weed_C	Bromus tectorum	Basal	Forb	Plantago patagonica
34	Foliar	Forb	Plantago patagonica	Basal	Forb	Plantago patagonica
35	Foliar	Shrub	Artemisia cana	Basal	Shrub	Artemisia cana
36	Foliar	Grass	Hesperostipa comata	Basal	Grass	Hesperostipa comata
37	Foliar	Noxious_Weed_C	Bromus tectorum	Basal	Noxious_Weed_C	Bromus tectorum
38	Foliar	Grass	Hesperostipa comata	Basal	Noxious_Weed_C	Bromus tectorum
39	Foliar	Noxious_Weed_C	Bromus tectorum	Basal	Noxious_Weed_C	Bromus tectorum
40	Foliar	Noxious_Weed_C	Bromus tectorum	Basal	Shrub	Artemisia cana
41	Foliar	Grass	Thinopyrum intermedia	Basal	Grass	Thinopyrum intermedia
42	Foliar	Noxious_Weed_C	Bromus tectorum	Basal	Noxious_Weed_C	Bromus tectorum
43	Foliar	Noxious_Weed_C	Bromus tectorum	Basal	Noxious_Weed_C	Bromus tectorum
44	Foliar	Noxious_Weed_C	Bromus tectorum	Basal	Noxious_Weed_C	Bromus tectorum
45	Foliar	Noxious_Weed_C	Bromus tectorum	Basal	Noxious_Weed_C	Bromus tectorum
46	Foliar	Noxious_Weed_C	Bromus tectorum	Basal	Noxious_Weed_C	Bromus tectorum
47	Foliar	Noxious_Weed_C	Bromus tectorum	Basal	Noxious_Weed_C	Bromus tectorum
48	Foliar	Noxious_Weed_C	Bromus tectorum	Basal	Shrub	Artemisia cana
49	Foliar	Noxious_Weed_C	Bromus tectorum	Basal	Noxious_Weed_C	Bromus tectorum
50	Foliar	Noxious_Weed_C	Bromus tectorum	Basal	Noxious_Weed_C	Bromus tectorum