



February 6, 2019

Kate Graves
Reclamation Representative
Kerr-McGee Oil & Gas Onshore LP
501 N Division Blvd
Platteville, Colorado 80651

**RE: Colorado Oil & Gas Conservation Commission (COGCC)
Vegetation Assessment Report (Interim Reclamation Completion Notice)
Barclay 16C-26HZ (311479)
Kerr-McGee Oil & Gas Onshore LP (Operator: 47120)**

Dear Ms. Graves:

Apex Companies, LLC (Apex) is presenting this letter to Kerr-McGee Oil & Gas Onshore LP (Kerr-McGee) documenting the results of a vegetation assessment that demonstrates successful completion of interim reclamation efforts, per COGCC Rule 1003, on the above-referenced location in Weld County, Colorado. Attached is a topographic location map, which identifies the referenced location.

Based on site visits and the completed vegetation assessment, Apex inspectors confirmed that the unused portions of the reduced production footprint have been stabilized, and seeded with a mixture consistent with species composition and reseeding practices common to the area.

On July 10, 2018, modified step-point vegetation surveys were conducted on the reclaimed portion of the well pad, and on adjacent reference areas. Foliar and basal cover, along with non-vegetated, and noxious weed occurrences were documented; 100 survey points were recorded within the reclaimed disturbance and 100 survey points were recorded within the reference area. Vegetation survey points were identified using a bullseye target tool. Noxious weeds listed by the Colorado Department of Agriculture were excluded from the vegetative coverage calculations. The survey methodology employed by Apex is based on the *step-point method* described in an interagency technical reference published by the Bureau of Land Management (BLM, 1996).

Survey results indicate the reclaimed area has a foliar vegetative cover that is 119% of the reference area. Vegetation survey results are provided in the attached survey summary tables and data sheets. Based on the results of the survey, interim reclamation as defined by COGCC Rule 1003.e (2) has been achieved. Photographs required by COGCC Rule 1003.e (3) are also attached along with a site map illustrating vegetation survey efforts.

Apex appreciates the opportunity to provide environmental consulting services to Kerr-McGee with this project. Should you have any questions or require additional information, please do not hesitate to contact me.

Sincerely,
Apex Companies, LLC



Chris Hines
Program Manager
970-773-9865
Chris.Hines@apexcos.com

Attachments:

1. Vegetation Survey (Summary of Field Data)
2. Vegetation Survey Site Map
3. Topographic Location Map
4. Vegetation Survey Photos
5. Vegetation Survey Field Data Tables

Reference:

United States (U.S.) Department of Agriculture (USDA), Forest Service (USFS), Natural Resource Conservation Service (NRCS) and U.S. Department of the Interior (USDOL) Bureau of Land Management (BLM). "Sampling Vegetation Attributes, Interagency Technical Reference, 1996 (Revised in 1997, and 1999)". USDOL BLM Technical References #1734-4.
Date Accessed: 2 August, 2017



Vegetation Survey (Summary of Field Data)

Client	Kerr-McGee
COGCC Location Name (ID)	Barclay 16C-26HZ (311479)
Assessment Date	7/10/2018
Inspector Name	Adam Roll

Based on the survey methodology, the foliar cover (%) in each survey area is calculated by summing the total number of foliar occurrences, excluding noxious weeds, and dividing by the total occurrences in the transects. For this location:

Reclaim Area (Foliar Cover)	Reference Area (Foliar Cover)
$(64 + 9 + 0) / 175 = 41.71\%$	$(58 + 5 + 5) / 194 = 35.05\%$

For purposes of this assessment, the undesirable foliar cover (%) is calculated by summing the total number of foliar occurrences of Kochia (*Kochia scoparia*) and Russian thistle (*Salsola L.*), and dividing by the total occurrences in the transects, excluding noxious weeds. For this location:

Reclaim Area (Undesirable Foliar Cover)	Reference Area (Undesirable Foliar Cover)
$7 / (64 + 9 + 0) = 9.59\%$	$0 / (58 + 5 + 5) = 0.00\%$

The percent of reference used to evaluate the reclamation area for compliance with COGCC Rule 1003.e(2) is calculated by dividing the foliar cover (%) in the reclaim area by the foliar cover (%) in the reference area. For this location:

Percent of Reference (Reclaim % / Reference %)
$41.71\% / 35.05\% = 119.00\%$

Reclaim Area Vegetation

Desirable Foliar Cover	37.71%
Desirable Basal Cover	20.00%
Non Vegetated	30.29%
Noxious Weed Cover	3.43%
Undesirable Cover	8.57%
QA Total (must equal 100)	100.00%
Grass (Foliar)	64
Forb (Foliar)	9
Shrubs (Foliar)	0
Noxious Weed (Foliar)	2
Grass (Basal)	34
Forb (Basal)	9
Shrubs (Basal)	0
Noxious Weed (Basal)	4
Bare Ground	16
Litter	37
Rock	0
Total Occurrences	175

Reference Area Vegetation

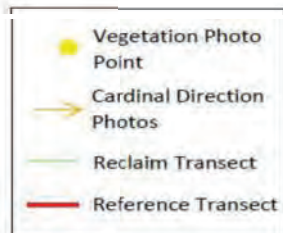
Desirable Foliar Cover	35.05%
Desirable Basal Cover	20.10%
Non Vegetated	6.19%
Noxious Weed Cover	38.66%
Undesirable Cover	0.00%
QA Total (must equal 100)	100.00%
Grass (Foliar)	58
Forb (Foliar)	5
Shrubs (Foliar)	5
Noxious Weed (Foliar)	26
Grass (Basal)	28
Forb (Basal)	7
Shrubs (Basal)	4
Noxious Weed (Basal)	49
Bare Ground	0
Litter	12
Rock	0
Total Occurrences	194



Vegetation Survey Site Map

Kerr-McGee Oil & Gas Onshore LP

BARCLAY 16C-26HZ
(311479)



Legal Description: SESE, Sec. 14, T2N-R67W

County: Weld

Land Use: Non-CropLand

Reference Area Cover: 35.05%

Reclaim Area Cover: 41.71%

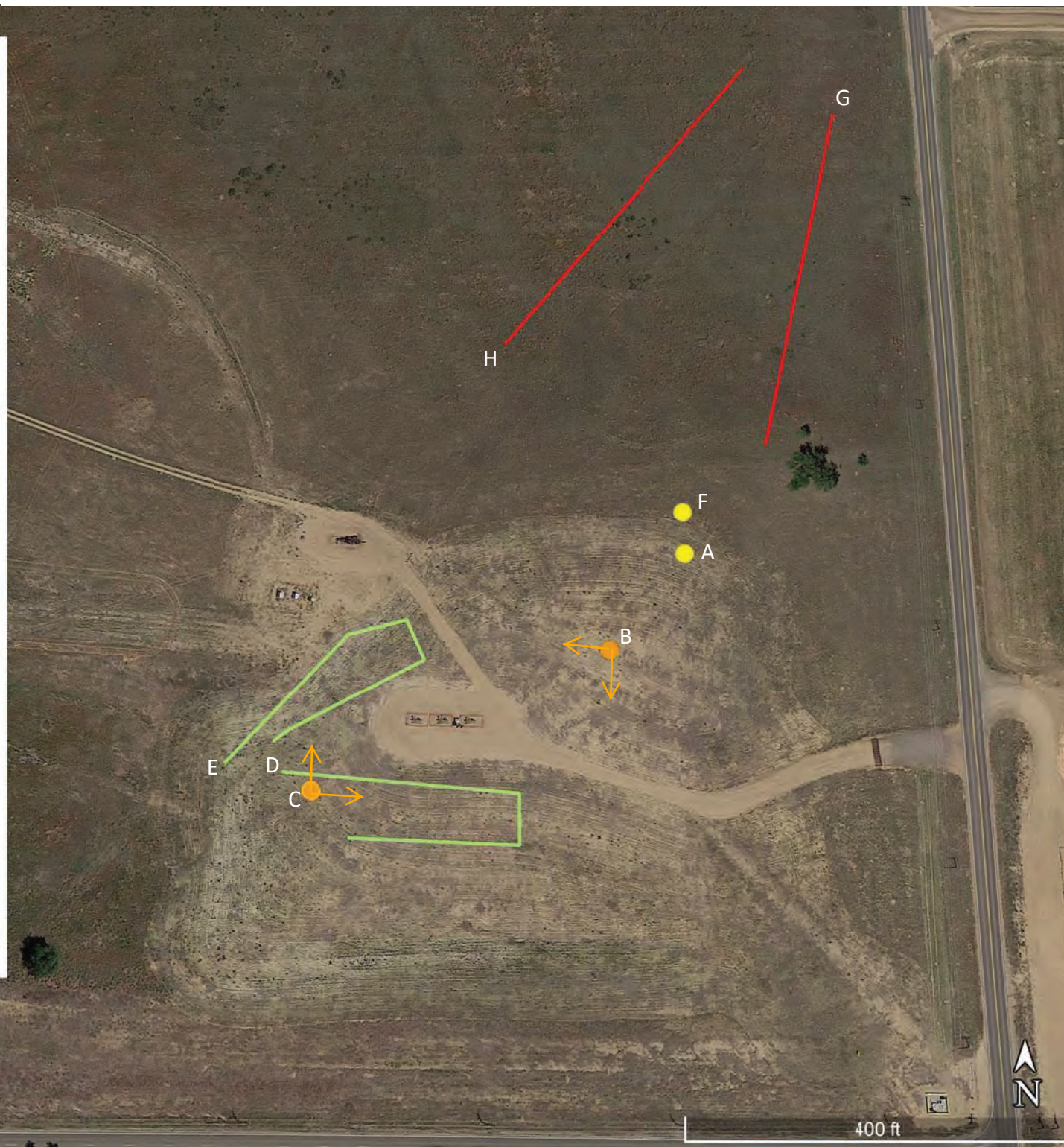
Cover Ratio (Reclaim/Reference): 119.00%

Inspector: Adam Roll

Assessment Date: 07/10/2018

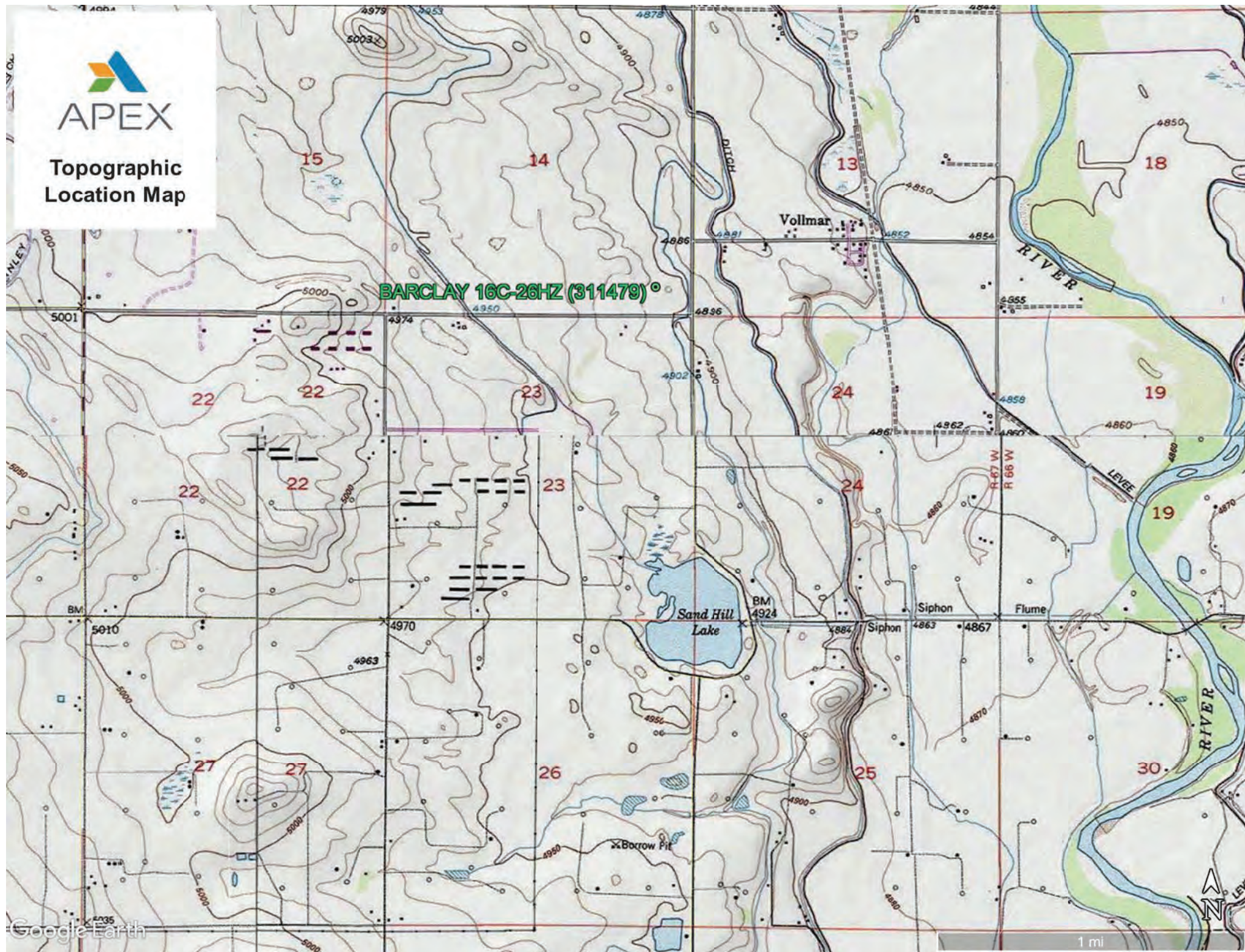
Aerial Imagery Date: 06/09/2017

**Please reference coordinate disclaimer on the photo log pages.*





Topographic Location Map



Vegetation Assessment Photo Log

Date Completed - 07/10/2018

Client - Kerr-McGee Oil & Gas Onshore LP

Location Name (ID) - Barclay 16C-26HZ (311479)



Photo Point A: Edge of Disturbance - Facing West

*Geographic coordinates provided in the borders of all attached photos are based on points identified by the mobile phone or tablet which collected the photo. Coordinate accuracy in this format is typically no greater than 5 meters, while the points illustrated in the site diagram associated with this submittal were collected with a high accuracy GPS unit with sub-meter accuracy. Discrepancies between the site diagram and photo coordinates will exist.

Vegetation Assessment Photo Log

Date Completed - 07/10/2018

Client - Kerr-McGee Oil & Gas Onshore LP

Location Name (ID) - Barclay 16C-26HZ (311479)



Photo Point B: North of Disturbance - Facing South



Photo Point C: South of Disturbance - Facing North



Photo Point C: West of Disturbance - Facing East



Photo Point B: East of Disturbance - Facing West

Vegetation Assessment Photo Log

Date Completed - 07/10/2018

Client - Kerr-McGee Oil & Gas Onshore LP

Location Name (ID) - Barclay 16C-26HZ (311479)



Photo Point C: Reclaim Area Vegetation Photo Point - Facing North

Vegetation Assessment Photo Log

Date Completed - 07/10/2018

Client - Kerr-McGee Oil & Gas Onshore LP

Location Name (ID) - Barclay 16C-26HZ (311479)



Transect Photo D: Reclaim Transect 1 - Facing East



Transect Photo E: Reclaim Transect 2 - Facing Northeast

Vegetation Assessment Photo Log

Date Completed - 07/10/2018

Client - Kerr-McGee Oil & Gas Onshore LP

Location Name (ID) - Barclay 16C-26HZ (311479)



Photo Point F: Reference Area Vegetation Photo Point - Facing North

Vegetation Assessment Photo Log

Client - Kerr-McGee Oil & Gas Onshore LP

Date Completed - 07/10/2018

Location Name (ID) - Barclay 16C-26HZ (311479)



Transect Photo G: Reference Transect 1 - Facing South



Transect Photo H: Reference Transect 2 - Facing Northeast



Client: Kerr-McGee
COGCC Location Name (ID): BARCLAY 16C-26HZ (311479)
Transect ID: Reclaim_Transect_1 Length: 500
Assessment Date: 7/10/2018
Inspector: ADAM ROLL

Point	Type	Foliar	Species	Type	Basal	Species
1	Foliar	Grass	Thinopyrum intermedia	Basal	Grass	Thinopyrum intermedia
2	Foliar	Grass	Thinopyrum intermedia	Basal	Grass	Thinopyrum intermedia
3	Foliar			Non_Vegetative	Bare_Ground	Bare Ground
4	Foliar	Grass	Sporobolus cryptandrus	Non_Vegetative	Bare_Ground	Bare Ground
5	Foliar	Grass	Sporobolus cryptandrus	Non_Vegetative	Bare_Ground	Bare Ground
6	Foliar	Grass	Thinopyrum intermedia	Non_Vegetative	Litter	Litter
7	Foliar	Grass	Sporobolus cryptandrus	Basal	Grass	Sporobolus cryptandrus
8	Foliar	Grass	Thinopyrum intermedia	Non_Vegetative	Litter	Litter
9	Foliar	Grass	Thinopyrum intermedia	Basal	Grass	Thinopyrum intermedia
10	Foliar			Non_Vegetative	Litter	Litter
11	Foliar	Grass	Elymus L	Non_Vegetative	Litter	Litter
12	Foliar	Grass	Sporobolus cryptandrus	Non_Vegetative	Litter	Litter
13	Foliar	Forb	Salsola L	Basal	Forb	Salsola L
14	Foliar	Grass	Elymus L	Basal	Noxious_Weed_C	Bromus tectorum
15	Foliar	Forb	Salsola L	Basal	Forb	Salsola L
16	Foliar	Forb	Salsola L	Basal	Forb	Salsola L
17	Foliar	Forb	Salsola L	Basal	Forb	Salsola L
18	Foliar	Grass	Elymus L	Basal	Grass	Elymus L
19	Foliar	Forb	Helianthus petiolaris	Basal	Grass	Elymus L
20	Foliar	Grass	Sporobolus cryptandrus	Basal	Grass	Sporobolus cryptandrus
21	Foliar			Non_Vegetative	Litter	Litter
22	Foliar	Grass	Bromus inermis	Non_Vegetative	Litter	Litter
23	Foliar			Non_Vegetative	Litter	Litter
24	Foliar	Grass	Bromus inermis	Basal	Other	Sweet clover
25	Foliar	Grass	Sporobolus airoides	Basal	Grass	Sporobolus airoides
26	Foliar	Grass	Sporobolus airoides	Basal	Grass	Sporobolus airoides
27	Foliar	Grass	Bromus inermis	Basal	Grass	Bromus inermis
28	Foliar	Forb	Salsola L	Basal	Forb	Salsola L
29	Foliar	Grass	Sporobolus airoides	Basal	Grass	Sporobolus airoides
30	Foliar	Grass	Sporobolus cryptandrus	Basal	Grass	Sporobolus cryptandrus
31	Foliar			Non_Vegetative	Litter	Litter
32	Foliar	Grass	Elymus L	Basal	Grass	Elymus L
33	Foliar			Non_Vegetative	Bare_Ground	Bare Ground
34	Foliar	Grass	Sporobolus cryptandrus	Basal	Forb	Salsola L
35	Foliar			Non_Vegetative	Litter	Litter
36	Foliar	Grass	Thinopyrum intermedia	Basal	Grass	Thinopyrum intermedia
37	Foliar	Grass	Thinopyrum intermedia	Basal	Grass	Thinopyrum intermedia
38	Foliar			Non_Vegetative	Litter	Litter
39	Foliar	Grass	Thinopyrum intermedia	Non_Vegetative	Bare_Ground	Bare Ground
40	Foliar	Grass	Sporobolus cryptandrus	Non_Vegetative	Litter	Litter
41	Foliar	Grass	Sporobolus cryptandrus	Non_Vegetative	Litter	Litter
42	Foliar	Grass	Sporobolus cryptandrus	Non_Vegetative	Litter	Litter
43	Foliar	Grass	Thinopyrum intermedia	Non_Vegetative	Bare_Ground	Bare Ground
44	Foliar	Grass	Sporobolus cryptandrus	Basal	Grass	Sporobolus cryptandrus
45	Foliar			Non_Vegetative	Litter	Litter
46	Foliar	Grass	Thinopyrum intermedia	Non_Vegetative	Litter	Litter
47	Foliar			Non_Vegetative	Litter	Litter
48	Foliar			Non_Vegetative	Bare_Ground	Bare Ground
49	Foliar	Grass	Thinopyrum intermedia	Basal	Grass	Thinopyrum intermedia
50	Foliar	Grass	Thinopyrum intermedia	Non_Vegetative	Litter	Litter



Client: Kerr-McGee
COGCC Location Name (ID): BARCLAY 16C-26HZ (311479)
Transect ID: Reclaim_Transect_2 Length: 500
Assessment Date: 7/10/2018
Inspector: ADAM ROLL

Point	Type	Foliar	Species	Type	Basal	Species
1	Foliar			Non_Vegetative	Litter	Litter
2	Foliar	Grass	Bouteloua curtipendula	Basal	Noxious_Weed_C	Tribulus terrestris
3	Foliar			Non_Vegetative	Litter	Litter
4	Foliar	Grass	Thinopyrum intermedia	Basal	Grass	Thinopyrum intermedia
5	Foliar	Grass	Bouteloua curtipendula	Non_Vegetative	Bare_Ground	Bare Ground
6	Foliar	Grass	Thinopyrum intermedia	Basal	Grass	Thinopyrum intermedia
7	Foliar	Grass	Thinopyrum intermedia	Non_Vegetative	Bare_Ground	Bare Ground
8	Foliar	Grass	Sporobolus airoides	Basal	Grass	Sporobolus airoides
9	Foliar	Grass	Thinopyrum intermedia	Basal	Grass	Thinopyrum intermedia
10	Foliar	Grass	Bromus inermis	Basal	Grass	Bromus inermis
11	Foliar	Grass	Thinopyrum intermedia	Non_Vegetative	Litter	Litter
12	Foliar			Non_Vegetative	Litter	Litter
13	Foliar	Grass	Thinopyrum intermedia	Basal	Grass	Thinopyrum intermedia
14	Foliar	Grass	Sporobolus cryptandrus	Basal	Grass	Sporobolus cryptandrus
15	Foliar			Non_Vegetative	Bare_Ground	Bare Ground
16	Foliar	Noxious_Weed_C	Tribulus terrestris	Basal	Noxious_Weed_C	Tribulus terrestris
17	Foliar	Grass	Sporobolus airoides	Basal	Grass	Sporobolus airoides
18	Foliar	Forb	Medicago sativa	Non_Vegetative	Litter	Litter
19	Foliar	Grass	Sporobolus cryptandrus	Non_Vegetative	Litter	Litter
20	Foliar	Forb	Salsola L	Basal	Forb	Salsola L
21	Foliar			Non_Vegetative	Litter	Litter
22	Foliar	Grass	Sporobolus cryptandrus	Non_Vegetative	Litter	Litter
23	Foliar			Non_Vegetative	Litter	Litter
24	Foliar			Non_Vegetative	Litter	Litter
25	Foliar			Non_Vegetative	Bare_Ground	Bare Ground
26	Foliar	Grass	Sporobolus airoides	Basal	Grass	Sporobolus airoides
27	Foliar			Non_Vegetative	Litter	Litter
28	Foliar	Grass	Elymus L	Basal	Grass	Elymus L
29	Foliar	Grass	Thinopyrum intermedia	Basal	Grass	Thinopyrum intermedia
30	Foliar	Grass	Bromus inermis	Basal	Grass	Bromus inermis
31	Foliar			Non_Vegetative	Bare_Ground	Bare Ground
32	Foliar			Non_Vegetative	Litter	Litter
33	Foliar			Non_Vegetative	Bare_Ground	Bare Ground
34	Foliar	Grass	Bromus inermis	Basal	Grass	Bromus inermis
35	Foliar	Grass	Bromus inermis	Basal	Grass	Bromus inermis
36	Foliar			Non_Vegetative	Bare_Ground	Bare Ground
37	Foliar	Grass	Thinopyrum intermedia	Basal	Grass	Thinopyrum intermedia
38	Foliar	Grass	Sporobolus airoides	Non_Vegetative	Bare_Ground	Bare Ground
39	Foliar			Non_Vegetative	Bare_Ground	Bare Ground
40	Foliar	Grass	Thinopyrum intermedia	Non_Vegetative	Litter	Litter
41	Foliar	Grass	Sporobolus cryptandrus	Non_Vegetative	Litter	Litter
42	Foliar	Grass	Bromus inermis	Non_Vegetative	Litter	Litter
43	Foliar	Grass	Thinopyrum intermedia	Non_Vegetative	Litter	Litter
44	Foliar	Grass	Thinopyrum intermedia	Basal	Grass	Bromus inermis
45	Foliar	Grass	Thinopyrum intermedia	Basal	Grass	Thinopyrum intermedia
46	Foliar	Grass	Sporobolus cryptandrus	Non_Vegetative	Litter	Litter
47	Foliar	Grass	Thinopyrum intermedia	Non_Vegetative	Litter	Litter
48	Foliar	Grass	Thinopyrum intermedia	Non_Vegetative	Litter	Litter
49	Foliar	Forb	Salsola L	Basal	Forb	Salsola L
50	Foliar	Noxious_Weed_C	Tribulus terrestris	Basal	Noxious_Weed_C	Tribulus terrestris



Client: Kerr-McGee
 COGCC Location Name (ID): BARCLAY 16C-26HZ (311479)
 Transect ID: Reference_Transect_1 Length: 420
 Assessment Date: 7/10/2018
 Inspector: ADAM ROLL

Point	Type	Foliar	Species	Type	Basal	Species
1	Foliar	Grass	Elymus L	Non_Vegetative	Litter	Litter
2	Foliar	Grass	Elymus L	Non_Vegetative	Litter	Litter
3	Foliar			Non_Vegetative	Litter	Litter
4	Foliar	Grass	Elymus L	Basal	Grass	Elymus L
5	Foliar			Non_Vegetative	Litter	Litter
6	Foliar	Grass	Sporobolus cryptandrus	Basal	Noxious_Weed_C	Bromus tectorum
7	Foliar	Grass	Elymus L	Basal	Noxious_Weed_C	Bromus tectorum
8	Foliar	Grass	Elymus L	Basal	Noxious_Weed_C	Bromus tectorum
9	Foliar	Grass	Sporobolus cryptandrus	Basal	Grass	Sporobolus cryptandrus
10	Foliar	Forb	Ambrosia psilostachya	Basal	Forb	Ambrosia psilostachya
11	Foliar	Grass	Elymus L	Basal	Noxious_Weed_C	Bromus tectorum
12	Foliar	Shrub	Ericameria nauseosa	Basal	Shrub	Ericameria nauseosa
13	Foliar	Grass	Sporobolus cryptandrus	Basal	Grass	Sporobolus cryptandrus
14	Foliar	Grass	Sporobolus cryptandrus	Basal	Noxious_Weed_C	Bromus tectorum
15	Foliar	Noxious_Weed_C	Bromus tectorum	Basal	Noxious_Weed_C	Bromus tectorum
16	Foliar	Grass	Sporobolus cryptandrus	Basal	Grass	Sporobolus cryptandrus
17	Foliar	Noxious_Weed_C	Bromus tectorum	Non_Vegetative	Litter	Litter
18	Foliar	Shrub	Ericameria nauseosa	Basal	Shrub	Ericameria nauseosa
19	Foliar	Grass	Hesperostipa comata	Basal	Noxious_Weed_C	Bromus tectorum
20	Foliar	Grass	Sporobolus airoides	Basal	Grass	Sporobolus airoides
21	Foliar	Grass	Hesperostipa comata	Basal	Forb	Sphaeralcea coccinea
22	Foliar	Noxious_Weed_C	Bromus tectorum	Non_Vegetative	Litter	Litter
23	Foliar	Noxious_Weed_C	Bromus tectorum	Basal	Forb	Ambrosia psilostachya
24	Foliar	Shrub	Ericameria nauseosa	Basal	Shrub	Ericameria nauseosa
25	Foliar	Noxious_Weed_C	Bromus tectorum	Basal	Grass	Bromus inermis
26	Foliar	Grass	Bromus inermis	Basal	Noxious_Weed_A	Chondrilla juncea
27	Foliar	Grass	Sporobolus cryptandrus	Basal	Noxious_Weed_C	Bromus tectorum
28	Foliar	Grass	Sporobolus cryptandrus	Basal	Grass	Sporobolus cryptandrus
29	Foliar	Grass	Bromus inermis	Basal	Noxious_Weed_C	Bromus tectorum
30	Foliar	Grass	Elymus L	Basal	Noxious_Weed_C	Bromus tectorum
31	Foliar	Noxious_Weed_C	Bromus tectorum	Basal	Noxious_Weed_C	Bromus tectorum
32	Foliar	Noxious_Weed_C	Bromus tectorum	Non_Vegetative	Litter	Litter
33	Foliar	Grass	Bromus inermis	Basal	Grass	Bromus inermis
34	Foliar	Grass	Sporobolus airoides	Basal	Grass	Sporobolus airoides
35	Foliar	Grass	Elymus L	Basal	Noxious_Weed_C	Bromus tectorum
36	Foliar	Noxious_Weed_C	Bromus tectorum	Basal	Noxious_Weed_C	Bromus tectorum
37	Foliar	Grass	Bromus inermis	Basal	Forb	Ambrosia psilostachya
38	Foliar	Noxious_Weed_C	Bromus tectorum	Basal	Noxious_Weed_C	Bromus tectorum
39	Foliar	Grass	Elymus L	Basal	Noxious_Weed_C	Bromus tectorum
40	Foliar			Non_Vegetative	Litter	Litter
41	Foliar	Forb	Ambrosia psilostachya	Basal	Forb	Ambrosia psilostachya
42	Foliar	Noxious_Weed_C	Bromus tectorum	Basal	Noxious_Weed_C	Bromus tectorum
43	Foliar	Grass	Sporobolus cryptandrus	Basal	Noxious_Weed_C	Bromus tectorum
44	Foliar	Grass	Elymus L	Basal	Noxious_Weed_C	Bromus tectorum
45	Foliar	Noxious_Weed_C	Bromus tectorum	Basal	Noxious_Weed_C	Bromus tectorum
46	Foliar			Non_Vegetative	Litter	Litter
47	Foliar	Grass	Bromus inermis	Basal	Noxious_Weed_C	Bromus tectorum
48	Foliar	Grass	Elymus L	Basal	Grass	Elymus L
49	Foliar	Noxious_Weed_C	Bromus tectorum	Basal	Noxious_Weed_C	Bromus tectorum
50	Foliar	Grass	Elymus L	Basal	Grass	Elymus L



Client: Kerr-McGee
 COGCC Location Name (ID): BARCLAY 16C-26HZ (311479)
 Transect ID: Reference_Transect_2 Length: 455
 Assessment Date: 7/10/2018
 Inspector: ADAM ROLL

Point	Type	Foliar	Species	Type	Basal	Species
1	Foliar	Grass	Elymus L	Basal	Grass	Elymus L
2	Foliar	Grass	Elymus L	Basal	Noxious_Weed_C	Bromus tectorum
3	Foliar	Grass	Elymus L	Basal	Grass	Elymus L
4	Foliar	Grass	Sporobolus cryptandrus	Basal	Noxious_Weed_C	Bromus tectorum
5	Foliar	Noxious_Weed_C	Bromus tectorum	Basal	Noxious_Weed_C	Bromus tectorum
6	Foliar	Forb	Ambrosia psilostachya	Basal	Forb	Ambrosia psilostachya
7	Foliar	Grass	Sporobolus cryptandrus	Basal	Noxious_Weed_C	Bromus tectorum
8	Foliar	Grass	Elymus L	Basal	Grass	Elymus L
9	Foliar	Grass	Thinopyrum intermedia	Basal	Grass	Thinopyrum intermedia
10	Foliar	Grass	Bromus inermis	Basal	Noxious_Weed_C	Bromus tectorum
11	Foliar	Grass	Elymus L	Basal	Noxious_Weed_C	Bromus tectorum
12	Foliar	Forb	Lactuca serriola	Basal	Noxious_Weed_C	Bromus tectorum
13	Foliar	Grass	Elymus L	Basal	Noxious_Weed_A	Chondrilla juncea
14	Foliar	Noxious_Weed_C	Bromus tectorum	Basal	Noxious_Weed_C	Bromus tectorum
15	Foliar	Grass	Elymus L	Basal	Noxious_Weed_C	Bromus tectorum
16	Foliar	Grass	Elymus L	Basal	Noxious_Weed_C	Bromus tectorum
17	Foliar	Noxious_Weed_C	Bromus tectorum	Basal	Noxious_Weed_C	Bromus tectorum
18	Foliar			Non_Vegetative	Litter	Litter
19	Foliar	Noxious_Weed_C	Bromus tectorum	Basal	Noxious_Weed_C	Bromus tectorum
20	Foliar	Grass	Sporobolus cryptandrus	Basal	Grass	Sporobolus cryptandrus
21	Foliar	Noxious_Weed_C	Bromus tectorum	Basal	Noxious_Weed_C	Bromus tectorum
22	Foliar	Grass	Sporobolus airoides	Basal	Noxious_Weed_C	Bromus tectorum
23	Foliar	Shrub	Ericameria nauseosa	Basal	Noxious_Weed_C	Bromus tectorum
24	Foliar	Noxious_Weed_C	Bromus tectorum	Basal	Grass	Sporobolus cryptandrus
25	Foliar	Grass	Sporobolus cryptandrus	Basal	Noxious_Weed_C	Bromus tectorum
26	Foliar	Shrub	Ericameria nauseosa	Basal	Shrub	Ericameria nauseosa
27	Foliar	Grass	Sporobolus cryptandrus	Basal	Noxious_Weed_C	Bromus tectorum
28	Foliar	Noxious_Weed_C	Bromus tectorum	Basal	Grass	Sporobolus cryptandrus
29	Foliar	Grass	Hesperostipa comata	Basal	Grass	Hesperostipa comata
30	Foliar	Noxious_Weed_C	Bromus tectorum	Basal	Noxious_Weed_C	Bromus tectorum
31	Foliar	Forb	Ambrosia psilostachya	Basal	Forb	Ambrosia psilostachya
32	Foliar	Grass	Bromus inermis	Basal	Grass	Bromus inermis
33	Foliar	Grass	Hesperostipa comata	Basal	Grass	Hesperostipa comata
34	Foliar	Grass	Bromus inermis	Basal	Noxious_Weed_C	Bromus tectorum
35	Foliar	Noxious_Weed_C	Bromus tectorum	Basal	Noxious_Weed_C	Bromus tectorum
36	Foliar	Noxious_Weed_C	Bromus tectorum	Basal	Grass	Sporobolus airoides
37	Foliar	Grass	Sporobolus cryptandrus	Basal	Grass	Sporobolus cryptandrus
38	Foliar	Noxious_Weed_C	Bromus tectorum	Basal	Noxious_Weed_C	Bromus tectorum
39	Foliar	Grass	Bromus inermis	Basal	Grass	Bromus inermis
40	Foliar	Noxious_Weed_C	Bromus tectorum	Basal	Noxious_Weed_C	Bromus tectorum
41	Foliar			Non_Vegetative	Litter	Litter
42	Foliar	Grass	Sporobolus cryptandrus	Basal	Noxious_Weed_C	Bromus tectorum
43	Foliar	Noxious_Weed_C	Bromus tectorum	Basal	Noxious_Weed_C	Bromus tectorum
44	Foliar	Grass	Bromus inermis	Basal	Grass	Bromus inermis
45	Foliar	Noxious_Weed_C	Bromus tectorum	Non_Vegetative	Litter	Litter
46	Foliar	Grass	Elymus L	Basal	Noxious_Weed_C	Bromus tectorum
47	Foliar	Grass	Elymus L	Basal	Grass	Elymus L
48	Foliar	Grass	Elymus L	Basal	Grass	Elymus L
49	Foliar	Grass	Elymus L	Basal	Grass	Elymus L
50	Foliar	Grass	Elymus L	Basal	Noxious_Weed_C	Bromus tectorum