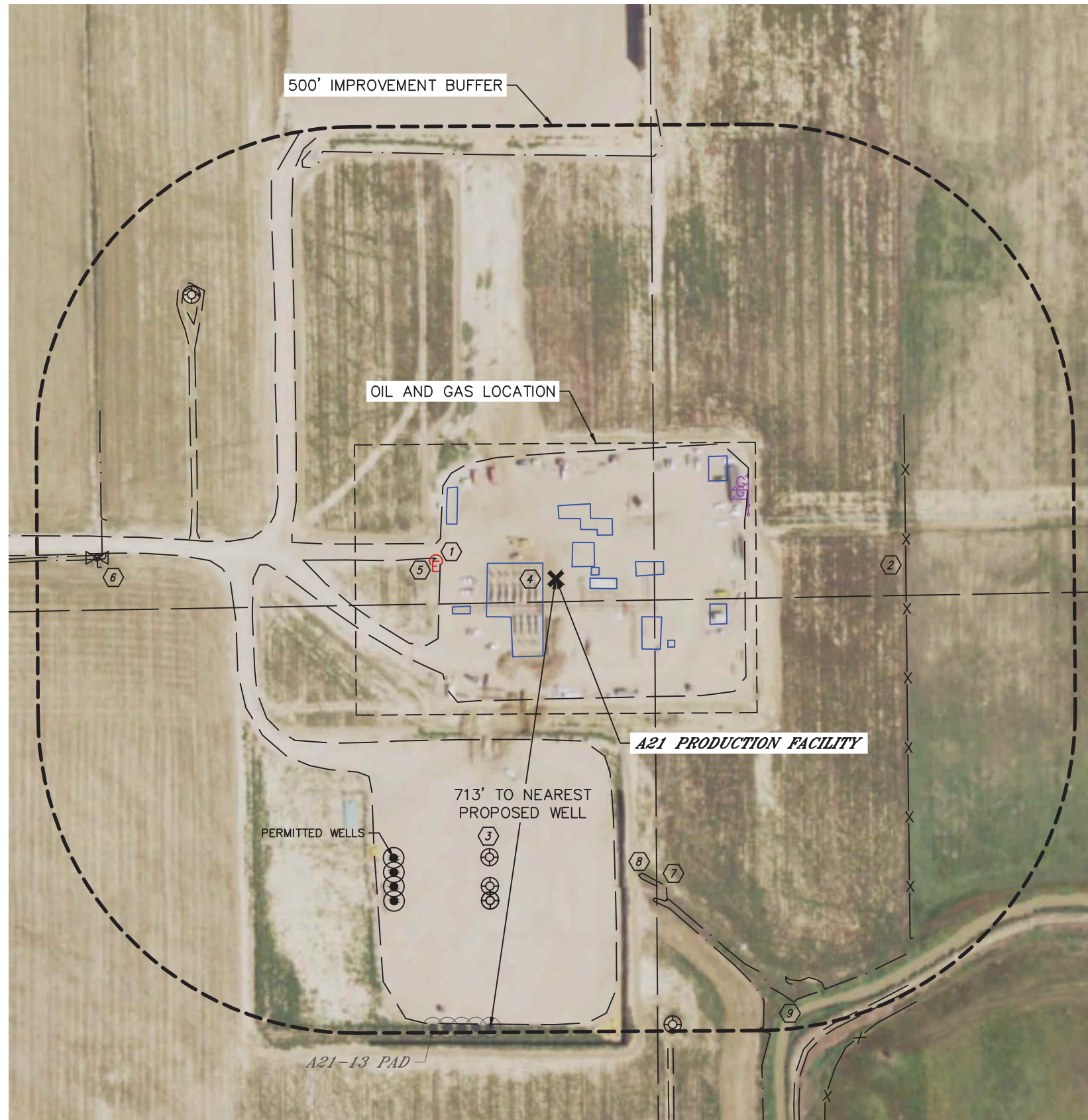


LOCATION DRAWING
A21 PRODUCTION FACILITY



IMPROVEMENTS:
(MEASURED FROM THE PROPOSED REFERENCE POINT WELL LOCATION)

- Ⓚ NO BUILDING UNITS WITHIN 500' IMPROVEMENT BUFFER
- Ⓛ NO BUILDINGS WITHIN 500' IMPROVEMENT BUFFER
- ① ROAD/EDGE OF GRAVEL 184', 419' & 563' NW, 208' SW, 253' S, 829' SE
- ② FENCE 550' E
- ③ EXISTING WELL 450', 494' & 516' SW, 725' SE, 726' NW
- ④ EXISTING PRODUCTION EQUIPMENT (NOBLE) 20' W, 32', 56', 95' & 285' NE, 54' & 127' E, 141' SW, 148', 201' & 245' SE, 178' NW
- ⑤ ELECTRIC SHUT OFF 190' NW
- ⑥ GATE VALVE 721' W
- ⑦ PIPE 517' SE, 714' & 715' W
- ⑧ DITCH 484', 527' & 723' SE, 666' N, 707' NW, 708' W
- ⑨ GREELEY NO. 2 DITCH 762' SE

CLIENT: NOBLE ENERGY, INC.				LANDMAN: TONY BALL			
INSTRUMENT OPERATOR: JAKE STILLE				SURVEY DATE: 9/26/2018		SURFACE USE: CROP LAND	
REF. PT.	FOOTAGE	REF. PT. LAT °	REF. PT. LONG °	REF. PT. PDOP	REF. PT. ELEV. (FT.)	REF. PT. 1/4/1/4	REF. PT. S-T-R
1351	FSL	1157	FWL	40.46798	-104.56044	1.7	4729
						NWSW	21-6-64

ASSOCIATED WELLS: RAMPART A33-770, RAMPART A33-760, RAMPART A33-750, RAMPART A33-740, RAMPART A33-730, RAMPART A33-780, RAMPART A33-790, RAMPART A32-721, RAMPART A32-751, RAMPART A32-739, RAMPART A32-730, HARPER A21-618, HARPER A21-626, HARPER A21-631, HARPER A21-637, HARPER A21-643, HARPER A21-649, HARPER A21-656, HARPER A21-664, HARPER A21-669, HARPER A21-674, HARPER A21-681, KONA A19-646, KONA A19-662, KONA A19-670, KONA A19-670, KONA A19-685, KONA A19-616, KONA A19-624, KONA A19-636