

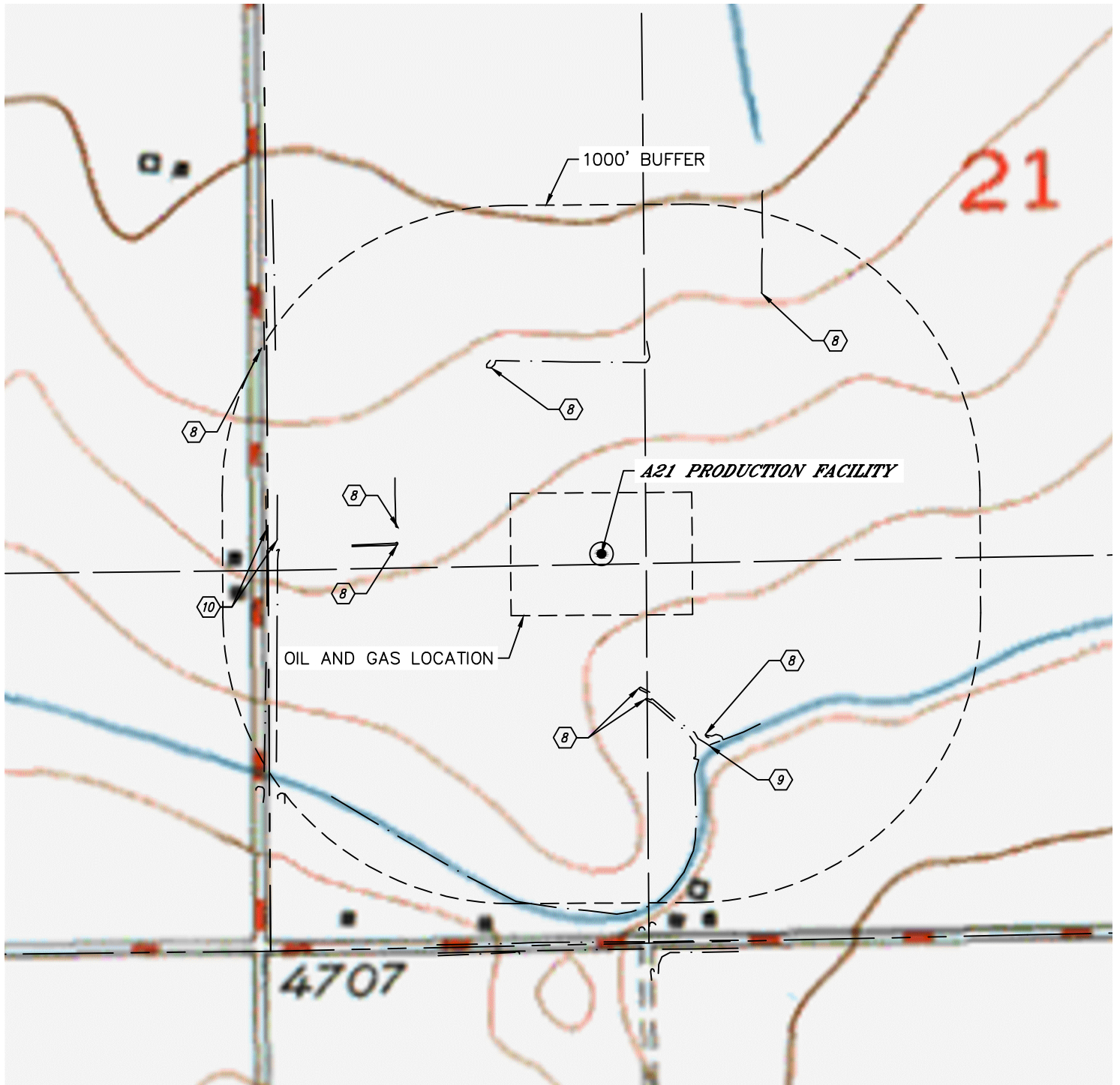


Lat40°, Inc. 6250 W. 10th Street, Unit 2, Greeley, CO 970-515-5294

HYDROLOGY MAP

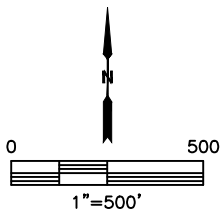
A21 PRODUCTION FACILITY

SECTION: 21
TOWNSHIP: 6N
RANGE: 64W
6TH. P.M.
WELD COUNTY, CO



DISTANCES MEASURED FROM THE EDGE OF THE OIL AND GAS LOCATION.

- ⑧ DITCH 390' & 391' W, 251', 291' S, 418' SE, 441' & 998' NW, 732' NE
- ⑨ GREELEY NO. 2 DITCH 459' SE
- ⑩ BORROW DITCH 811' & 847' W



DATE: 9/26/2018
PROJECT#: 2018024