

SRC ENERGY

Location: COLORADO Slot: SLOT#09 BOST FARM 13N-11B-L (2666'FSL & 1214'FWL, SEC.07)
 Field: WELD COUNTY (NAD83,TRUE NORTH) Well: BOST FARM 13N-11B-L
 Facility: SEC.07-T05N-R66W Wellbore: BOST FARM 13N-11B-L PWB

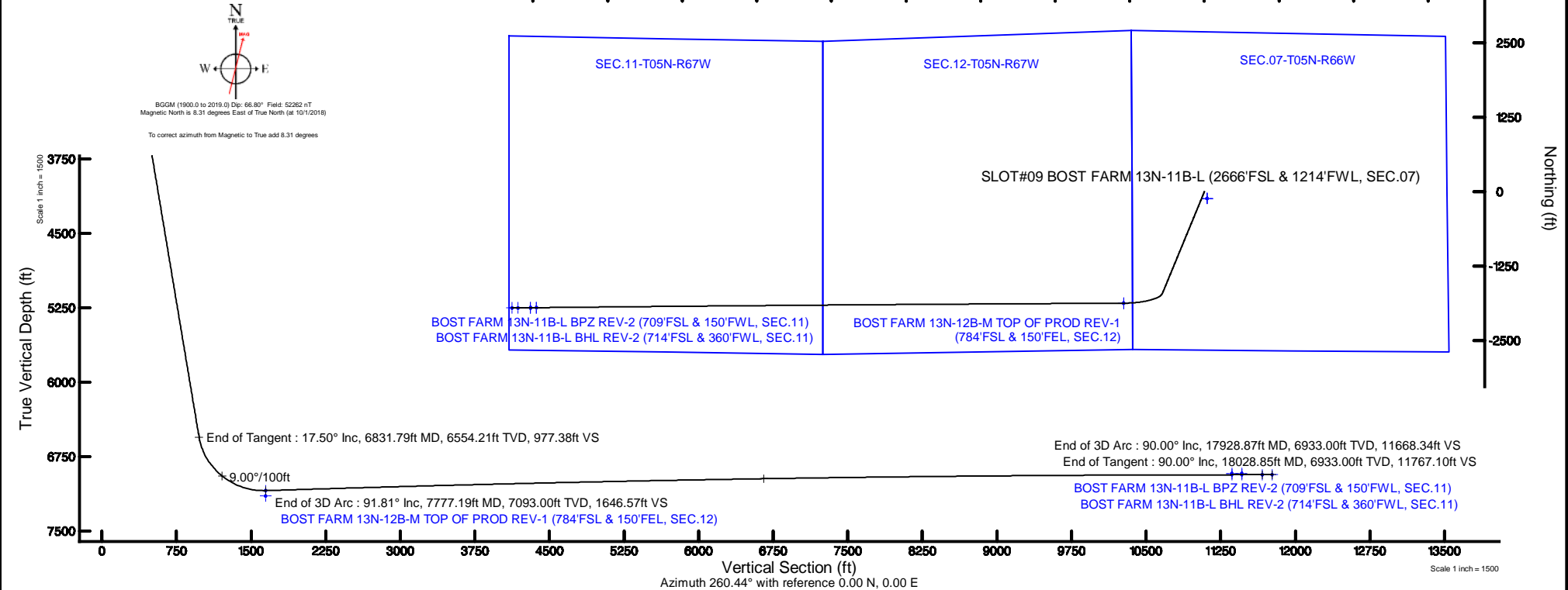
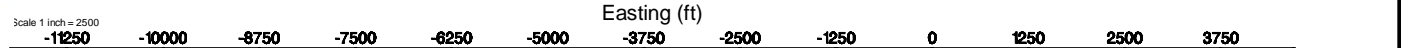
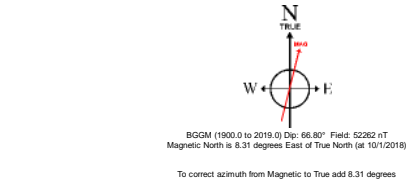
Plot reference wellpath is BOST FARM 13N-11B-L (REV-C.0) PWP
 Grid System: NAD83 / Lambert Colorado SP, Northern Zone (501), US feet
 True vertical depths are referenced to IKON 12 (4) (RKB) North Reference: True north
 Measured depths are referenced to IKON 12 (4) (RKB) Scale: True distance
 IKON 12 (4) (RKB) to Mean Sea Level: 4877 feet Depths are in feet
 Mean Sea Level to Mud line (At Slot: SLOT#09 BOST FARM 13N-11B-L (2666'FSL & 1214'FWL, SEC.07)): 0 feet Created by: haribasi on 2019-01-03
 Coordinates are in feet referenced to Slot Database: WA DENVER

Location Information

Facility Name	Grid East (US ft)	Grid North (US ft)	Latitude	Longitude		
SEC.07-T05N-R66W	3187161.591	1394309.789	40°24'49.806"N	104°49'40.249"W		
Slot	Local N (ft)	Local E (ft)	Grid East (US ft)	Grid North (US ft)	Latitude	Longitude
SLOT#09 BOST FARM 13N-11B-L (2666'FSL & 1214'FWL, SEC.07)	114.03	-44.29	3187116.439	1394423.475	40°24'50.933"N	104°49'40.822"W
IKON 12 (4) (RKB) to Mud line (At Slot: SLOT#09 BOST FARM 13N-11B-L (2666'FSL & 1214'FWL, SEC.07))						4877ft
Mean Sea Level to Mud line (At Slot: SLOT#09 BOST FARM 13N-11B-L (2666'FSL & 1214'FWL, SEC.07))						0ft
IKON 12 (4) (RKB) to Mean Sea Level						4877ft

Survey Program

Start MD (ft)	End MD (ft)	Tool	Model	Log Name/Comment	Wellbore
4.00	1750.00	BHI NaviTrak	BHI NaviTrak (Axial)		BOST FARM 13N-11B-L PWB
1750.00	18028.85	BHI AutoTrak Curve	BHI AutoTrak Curve (MagCAD+IFR1, Short spacing)		BOST FARM 13N-11B-L PWB



Targets

Name	MD (ft)	TVD (ft)	Local N (ft)	Local E (ft)	Grid East (US ft)	Grid North (US ft)	Latitude	Longitude
SEC.07-T05N-R66W	1.00	-114.03	44.29	3187161.59	1394309.79	40°24'49.806"N	104°49'40.249"W	
SEC.11-T05N-R67W	1.00	-114.03	44.29	3187161.59	1394309.79	40°24'49.806"N	104°49'40.249"W	
SEC.12-T05N-R67W	1.00	-114.03	44.29	3187161.59	1394309.79	40°24'49.806"N	104°49'40.249"W	
BOST FARM 13N-11B-L BHL ON PLAT (714'FSL & 360'FWL, SEC.11)	6919.00	-1951.96	-11293.71	3175838.31	1392386.07	40°24'31.619"N	104°52'06.816"W	
BOST FARM 13N-11B-L BPZ ON PLAT (716'FSL & 460'FWL, SEC.11)	6919.00	-1950.91	-11193.73	3175938.27	1392387.88	40°24'31.630"N	104°52'05.524"W	
BOST FARM 13N-11B-L BHL REV-1 (714'FSL & 360'FWL, SEC.11)	6933.00	-1951.94	-11293.71	3175838.31	1392386.09	40°24'31.619"N	104°52'06.816"W	
BOST FARM 13N-11B-L BHL REV-2 (714'FSL & 360'FWL, SEC.11)	18028.85	6933.00	-1954.36	-11603.67	3175628.39	1392381.32	40°24'31.594"N	104°52'10.823"W
BOST FARM 13N-11B-L BPZ REV-1 (716'FSL & 460'FWL, SEC.11)		6933.00	-1950.87	-11193.76	3175938.24	1392387.92	40°24'31.630"N	104°52'05.524"W
BOST FARM 13N-11B-L BPZ REV-2 (709'FSL & 150'FWL, SEC.11)	17928.87	6933.00	-1953.32	-11503.69	3175628.36	1392383.12	40°24'31.604"N	104°52'09.530"W
BOST FARM 13N-12B-M TOP OF PROD REV-1 (784'FSL & 150'FEL, SEC.12)	7777.19	7093.00	-1874.74	-1354.01	3185776.73	1392538.61	40°24'32.407"N	104°49'58.325"W
BOST FARM 13N-12B-M TOP OF PROD ON PLAT (784'FSL & 150'FEL, SEC.12)	7148.00	-1874.72	-1353.99	3185776.75	1392538.63	40°24'32.407"N	104°49'58.325"W	

Hole and Casing Sections

Name	Start MD (ft)	End MD (ft)	Interval (ft)	Start TVD (ft)	End TVD (ft)	Start Local N (ft)	Start Local E (ft)	End Local N (ft)	End Local E (ft)	Wellbore
13.5in Open Hole	4.00	1750.00	1746.00	4.00	1707.54	0.00	0.00	-296.40	-121.94	BOST FARM 13N-11B-L PWB
9.625in Casing Surface	4.00	1750.00	1746.00	4.00	1707.54	0.00	0.00	-296.40	-121.94	BOST FARM 13N-11B-L PWB
8.5in Open Hole	1750.00	18028.85	16278.85	1707.54	6933.00	-296.40	-121.94	-1954.36	-11603.67	BOST FARM 13N-11B-L PWB

Well Profile Data

Design Comment	MD (ft)	Inc (°)	Az (°)	TVD (ft)	Local N (ft)	Local E (ft)	DLS (°/100ft)	VS (ft)
Tie On	4.00	0.000	202.363	4.00	0.00	0.00	0.00	0.00
End of Tangent	250.00	0.000	202.363	250.00	0.00	0.00	0.00	0.00
End of Build	1124.85	17.497	202.363	1111.32	-122.58	-50.43	2.00	70.09
End of Tangent	6831.79	17.497	202.363	6554.21	-1709.36	-703.25	0.00	977.38
End of 3D Arc	7777.19	91.806	269.712	7093.00	-1874.74	-1354.01	9.00	1646.57
End of 3D Arc	17928.87	90.000	269.400	6933.00	-1953.32	-11503.69	0.02	11668.34
End of Tangent	18028.85	90.000	269.400	6933.00	-1954.36	-11603.67	0.00	11767.10

Easting (ft)

Northing (ft)

Scale 1 inch = 1500

Vertical Section (ft)
Azimuth 260.44° with reference 0.00 N, 0.00 E

BOST FARM 13N-11B-L (REV-C.0) LAS.las

~VERSION INFORMATION

VERS. 2.0 : CWLS LOG ASCII STANDARD-VERSION 2.0
 WRAP. NO : ASCII DATA SECTION CONTAINS ONE ROW PER WELLPATH STATION

~WELL INFORMATION

#MNEM	.UNITS	DATA	:DESCRIPTION
#----	.-----	----	:-----
STRT	.ft	0.00	:START MD
STOP	.ft	18028.85	:STOP MD
STEP	.ft	0.0	:STEP (non-uniform increment)
NULL	.	-999.99	:NULL
COMP	.	SRC ENERGY	:OPERATOR
WELL	.	BOST FARM 13N-11B-L	:WELL
FLD	.	WELD COUNTY (NAD83,TRUE NORTH)	:FIELD
LOC	.	COLORADO	:AREA (aka: Location)
CNTY	.	N/A	:COUNTY
STAT	.	N/A	:STATE
CTRY	.	N/A	:COUNTRY
SRVC	.	Baker Hughes	:CONTRACTOR
DATE	.	09/25/2018	:LOG REV DATE
API	.		:API NUMBER

~OTHER INFORMATION

#Software: WellArchitect(R) Version 5.1

#MNEM	.UNITS	DATA	:DESCRIPTION
#----	.-----	----	:-----
WPTYPE	.	PLANNED WELLPATH	:WELLPATH TYPE
FACILITY	.	SEC.07-T05N-R66W	:FACILITY
SLOT	.	SLOT#09 BOST FARM 13N-11B-L (2666'FSL & 1214'FWL, SEC.07):SLOT	:SLOT
WELLBORE	.	BOST FARM 13N-11B-L PWB	:WELLBORE
WELLPATH	.	BOST FARM 13N-11B-L (REV-C.0) PWP	:WELLPATH
MDREFPT	.	IKON 12 (4') (RKB)	:MD REFERENCE POINT
TVDREFPT	.	IKON 12 (4') (RKB)	:TVD REFERENCE POINT
LCLREFPT	.	Slot	:LOCAL COORDINATE REFERENCE PT

BOST FARM 13N-11B-L (REV-C.0) LAS.las

VSAZIMUTH.deg 260.44 :VERTICAL SECTION AZIMUTH
 VSORIGN .ft 0.00 :VERTICAL SECTION ORIGIN NORTH
 VSORIGE .ft 0.00 :VERTICAL SECTION ORIGIN EAST

~CURVE (WELLPATH) INFORMATION

#MNEM .UNITS :DESCRIPTION
 #----- .----- :-----
 DEPT .ft :MEASURED DEPTH
 INC .deg :INCLINATION
 AZI .deg :AZIMUTH
 TVD .ft :TRUE VERTICAL DEPTH
 SECT .ft :CROSS SECTION (CURTAIN/VERTICAL)
 LOCALN .ft :LOCAL NORTH
 LOCALE .ft :LOCAL EAST
 LAT .deg :LATITUDE
 LONG .deg :LONGITUDE
 DLS .deg/100ft :DOGLEG SEVERITY

~ASCII DATA

0.00	0.00	202.36	0.00	0.00	0.00	0.00	40.4141480	-104.8280060	0.00
4.00	0.00	202.36	4.00	0.00	0.00	0.00	40.4141480	-104.8280060	0.00
104.00	0.00	202.36	104.00	0.00	0.00	0.00	40.4141480	-104.8280060	0.00
204.00	0.00	202.36	204.00	0.00	0.00	0.00	40.4141480	-104.8280060	0.00
250.00	0.00	202.36	250.00	0.00	0.00	0.00	40.4141480	-104.8280060	0.00
304.00	1.08	202.36	304.00	0.27	-0.47	-0.19	40.4141467	-104.8280067	2.00
404.00	3.08	202.36	403.93	2.19	-3.83	-1.57	40.4141375	-104.8280117	2.00
504.00	5.08	202.36	503.67	5.95	-10.41	-4.28	40.4141194	-104.8280214	2.00
604.00	7.08	202.36	603.10	11.55	-20.20	-8.31	40.4140925	-104.8280358	2.00
704.00	9.08	202.36	702.10	18.98	-33.20	-13.66	40.4140569	-104.8280550	2.00
804.00	11.08	202.36	800.55	28.24	-49.38	-20.32	40.4140124	-104.8280790	2.00
904.00	13.08	202.36	898.33	39.30	-68.74	-28.28	40.4139593	-104.8281076	2.00
1004.00	15.08	202.36	995.32	52.17	-91.23	-37.53	40.4138976	-104.8281408	2.00
1104.00	17.08	202.36	1091.41	66.81	-116.85	-48.07	40.4138273	-104.8281786	2.00
1124.85	17.50	202.36	1111.32	70.09	-122.58	-50.43	40.4138115	-104.8281871	2.00

BOST FARM 13N-11B-L (REV-C.0) LAS.las

1204.00	17.50	202.36	1186.80	82.67	-144.59	-59.48	40.4137511	-104.8282196	0.00
1304.00	17.50	202.36	1282.18	98.57	-172.39	-70.92	40.4136748	-104.8282607	0.00
1404.00	17.50	202.36	1377.55	114.47	-200.19	-82.36	40.4135985	-104.8283018	0.00
1504.00	17.50	202.36	1472.92	130.37	-228.00	-93.80	40.4135222	-104.8283428	0.00
1604.00	17.50	202.36	1568.30	146.26	-255.80	-105.24	40.4134458	-104.8283839	0.00
1704.00	17.50	202.36	1663.67	162.16	-283.61	-116.68	40.4133695	-104.8284250	0.00
1804.00	17.50	202.36	1759.04	178.06	-311.41	-128.12	40.4132932	-104.8284661	0.00
1904.00	17.50	202.36	1854.42	193.96	-339.22	-139.56	40.4132169	-104.8285072	0.00
2004.00	17.50	202.36	1949.79	209.86	-367.02	-151.00	40.4131406	-104.8285482	0.00
2104.00	17.50	202.36	2045.16	225.75	-394.83	-162.43	40.4130642	-104.8285893	0.00
2204.00	17.50	202.36	2140.54	241.65	-422.63	-173.87	40.4129879	-104.8286304	0.00
2304.00	17.50	202.36	2235.91	257.55	-450.43	-185.31	40.4129116	-104.8286715	0.00
2404.00	17.50	202.36	2331.28	273.45	-478.24	-196.75	40.4128353	-104.8287125	0.00
2504.00	17.50	202.36	2426.66	289.35	-506.04	-208.19	40.4127590	-104.8287536	0.00
2604.00	17.50	202.36	2522.03	305.24	-533.85	-219.63	40.4126826	-104.8287947	0.00
2704.00	17.50	202.36	2617.40	321.14	-561.65	-231.07	40.4126063	-104.8288358	0.00
2804.00	17.50	202.36	2712.78	337.04	-589.46	-242.51	40.4125300	-104.8288769	0.00
2904.00	17.50	202.36	2808.15	352.94	-617.26	-253.95	40.4124537	-104.8289179	0.00
3004.00	17.50	202.36	2903.52	368.84	-645.07	-265.38	40.4123774	-104.8289590	0.00
3104.00	17.50	202.36	2998.90	384.73	-672.87	-276.82	40.4123010	-104.8290001	0.00
3204.00	17.50	202.36	3094.27	400.63	-700.67	-288.26	40.4122247	-104.8290412	0.00
3304.00	17.50	202.36	3189.64	416.53	-728.48	-299.70	40.4121484	-104.8290822	0.00
3404.00	17.50	202.36	3285.02	432.43	-756.28	-311.14	40.4120721	-104.8291233	0.00
3504.00	17.50	202.36	3380.39	448.33	-784.09	-322.58	40.4119958	-104.8291644	0.00
3604.00	17.50	202.36	3475.76	464.22	-811.89	-334.02	40.4119194	-104.8292055	0.00
3704.00	17.50	202.36	3571.14	480.12	-839.70	-345.46	40.4118431	-104.8292465	0.00
3804.00	17.50	202.36	3666.51	496.02	-867.50	-356.90	40.4117668	-104.8292876	0.00
3904.00	17.50	202.36	3761.88	511.92	-895.31	-368.34	40.4116905	-104.8293287	0.00
4004.00	17.50	202.36	3857.26	527.82	-923.11	-379.77	40.4116142	-104.8293698	0.00
4104.00	17.50	202.36	3952.63	543.71	-950.91	-391.21	40.4115378	-104.8294108	0.00
4204.00	17.50	202.36	4048.00	559.61	-978.72	-402.65	40.4114615	-104.8294519	0.00
4304.00	17.50	202.36	4143.37	575.51	-1006.52	-414.09	40.4113852	-104.8294930	0.00
4404.00	17.50	202.36	4238.75	591.41	-1034.33	-425.53	40.4113089	-104.8295341	0.00
4504.00	17.50	202.36	4334.12	607.31	-1062.13	-436.97	40.4112325	-104.8295751	0.00

BOST FARM 13N-11B-L (REV-C.0) LAS.las

4604.00	17.50	202.36	4429.49	623.20	-1089.94	-448.41	40.4111562	-104.8296162	0.00
4704.00	17.50	202.36	4524.87	639.10	-1117.74	-459.85	40.4110799	-104.8296573	0.00
4804.00	17.50	202.36	4620.24	655.00	-1145.55	-471.29	40.4110036	-104.8296984	0.00
4904.00	17.50	202.36	4715.61	670.90	-1173.35	-482.73	40.4109273	-104.8297394	0.00
5004.00	17.50	202.36	4810.99	686.80	-1201.16	-494.16	40.4108509	-104.8297805	0.00
5104.00	17.50	202.36	4906.36	702.70	-1228.96	-505.60	40.4107746	-104.8298216	0.00
5204.00	17.50	202.36	5001.73	718.59	-1256.76	-517.04	40.4106983	-104.8298627	0.00
5304.00	17.50	202.36	5097.11	734.49	-1284.57	-528.48	40.4106220	-104.8299037	0.00
5404.00	17.50	202.36	5192.48	750.39	-1312.37	-539.92	40.4105457	-104.8299448	0.00
5504.00	17.50	202.36	5287.85	766.29	-1340.18	-551.36	40.4104693	-104.8299859	0.00
5604.00	17.50	202.36	5383.23	782.19	-1367.98	-562.80	40.4103930	-104.8300270	0.00
5704.00	17.50	202.36	5478.60	798.08	-1395.79	-574.24	40.4103167	-104.8300680	0.00
5804.00	17.50	202.36	5573.97	813.98	-1423.59	-585.68	40.4102404	-104.8301091	0.00
5904.00	17.50	202.36	5669.35	829.88	-1451.40	-597.12	40.4101641	-104.8301502	0.00
6004.00	17.50	202.36	5764.72	845.78	-1479.20	-608.55	40.4100877	-104.8301913	0.00
6104.00	17.50	202.36	5860.09	861.68	-1507.00	-619.99	40.4100114	-104.8302323	0.00
6204.00	17.50	202.36	5955.47	877.57	-1534.81	-631.43	40.4099351	-104.8302734	0.00
6304.00	17.50	202.36	6050.84	893.47	-1562.61	-642.87	40.4098588	-104.8303145	0.00
6404.00	17.50	202.36	6146.21	909.37	-1590.42	-654.31	40.4097824	-104.8303556	0.00
6504.00	17.50	202.36	6241.59	925.27	-1618.22	-665.75	40.4097061	-104.8303966	0.00
6604.00	17.50	202.36	6336.96	941.17	-1646.03	-677.19	40.4096298	-104.8304377	0.00
6704.00	17.50	202.36	6432.33	957.06	-1673.83	-688.63	40.4095535	-104.8304788	0.00
6804.00	17.50	202.36	6527.71	972.96	-1701.64	-700.07	40.4094772	-104.8305199	0.00
6831.79	17.50	202.36	6554.21	977.38	-1709.36	-703.25	40.4094560	-104.8305313	0.00
6904.00	20.81	219.51	6622.47	992.83	-1729.32	-715.55	40.4094012	-104.8305755	9.00
7004.00	27.29	235.02	6713.83	1027.03	-1756.23	-745.70	40.4093273	-104.8306837	9.00
7104.00	34.84	244.58	6799.47	1075.31	-1781.68	-790.38	40.4092574	-104.8308441	9.00
7204.00	42.90	251.01	6877.30	1136.49	-1805.06	-848.48	40.4091933	-104.8310528	9.00
7304.00	51.21	255.72	6945.39	1209.05	-1825.79	-918.57	40.4091364	-104.8313045	9.00
7404.00	59.68	259.43	7002.07	1291.22	-1843.35	-998.94	40.4090881	-104.8315931	9.00
7504.00	68.24	262.55	7045.94	1380.97	-1857.32	-1087.59	40.4090498	-104.8319114	9.00
7604.00	76.85	265.31	7075.92	1476.08	-1867.35	-1182.36	40.4090222	-104.8322517	9.00
7704.00	85.48	267.88	7091.27	1574.22	-1873.20	-1280.90	40.4090062	-104.8326055	9.00
7777.19	91.81	269.71	7093.00	1646.57	-1874.74	-1354.01	40.4090019	-104.8328681	9.00

BOST FARM 13N-11B-L (REV-C.0) LAS.las

7804.00	91.80	269.71	7092.16	1673.02	-1874.87	-1380.80	40.4090016	-104.8329643	0.02
7904.00	91.78	269.71	7089.03	1771.66	-1875.38	-1480.75	40.4090002	-104.8333232	0.02
8004.00	91.77	269.71	7085.93	1870.31	-1875.89	-1580.71	40.4089987	-104.8336821	0.02
8104.00	91.75	269.70	7082.86	1968.96	-1876.40	-1680.66	40.4089973	-104.8340410	0.02
8204.00	91.73	269.70	7079.83	2067.61	-1876.93	-1780.61	40.4089959	-104.8343999	0.02
8304.00	91.71	269.70	7076.83	2166.26	-1877.45	-1880.56	40.4089944	-104.8347588	0.02
8404.00	91.70	269.69	7073.85	2264.92	-1877.99	-1980.52	40.4089929	-104.8351178	0.02
8504.00	91.68	269.69	7070.91	2363.58	-1878.52	-2080.47	40.4089914	-104.8354767	0.02
8604.00	91.66	269.69	7068.00	2462.23	-1879.07	-2180.43	40.4089899	-104.8358356	0.02
8704.00	91.64	269.68	7065.12	2560.89	-1879.62	-2280.39	40.4089884	-104.8361945	0.02
8804.00	91.62	269.68	7062.27	2659.56	-1880.17	-2380.34	40.4089868	-104.8365535	0.02
8904.00	91.61	269.68	7059.45	2758.22	-1880.73	-2480.30	40.4089853	-104.8369124	0.02
9004.00	91.59	269.68	7056.67	2856.88	-1881.29	-2580.26	40.4089837	-104.8372714	0.02
9104.00	91.57	269.67	7053.91	2955.55	-1881.86	-2680.22	40.4089821	-104.8376303	0.02
9204.00	91.55	269.67	7051.19	3054.22	-1882.44	-2780.18	40.4089805	-104.8379892	0.02
9304.00	91.54	269.67	7048.49	3152.89	-1883.02	-2880.15	40.4089788	-104.8383482	0.02
9404.00	91.52	269.66	7045.83	3251.56	-1883.61	-2980.11	40.4089772	-104.8387071	0.02
9504.00	91.50	269.66	7043.20	3350.23	-1884.20	-3080.07	40.4089755	-104.8390661	0.02
9604.00	91.48	269.66	7040.60	3448.91	-1884.80	-3180.04	40.4089739	-104.8394251	0.02
9704.00	91.46	269.65	7038.03	3547.59	-1885.40	-3280.00	40.4089722	-104.8397840	0.02
9804.00	91.45	269.65	7035.49	3646.26	-1886.01	-3379.97	40.4089705	-104.8401430	0.02
9904.00	91.43	269.65	7032.98	3744.94	-1886.62	-3479.93	40.4089688	-104.8405020	0.02
10004.00	91.41	269.64	7030.51	3843.63	-1887.24	-3579.90	40.4089670	-104.8408609	0.02
10104.00	91.39	269.64	7028.06	3942.31	-1887.86	-3679.87	40.4089653	-104.8412199	0.02
10204.00	91.37	269.64	7025.65	4040.99	-1888.49	-3779.84	40.4089635	-104.8415789	0.02
10304.00	91.36	269.64	7023.27	4139.68	-1889.13	-3879.81	40.4089617	-104.8419378	0.02
10404.00	91.34	269.63	7020.91	4238.37	-1889.77	-3979.78	40.4089599	-104.8422968	0.02
10504.00	91.32	269.63	7018.59	4337.06	-1890.41	-4079.75	40.4089581	-104.8426558	0.02
10604.00	91.30	269.63	7016.30	4435.75	-1891.06	-4179.72	40.4089563	-104.8430148	0.02
10704.00	91.29	269.62	7014.04	4534.44	-1891.72	-4279.69	40.4089544	-104.8433738	0.02
10804.00	91.27	269.62	7011.82	4633.14	-1892.38	-4379.67	40.4089526	-104.8437328	0.02
10904.00	91.25	269.62	7009.62	4731.83	-1893.05	-4479.64	40.4089507	-104.8440917	0.02
11004.00	91.23	269.61	7007.45	4830.53	-1893.72	-4579.61	40.4089488	-104.8444507	0.02
11104.00	91.21	269.61	7005.32	4929.23	-1894.40	-4679.59	40.4089469	-104.8448097	0.02

BOST FARM 13N-11B-L (REV-C.0) LAS.las

11204.00	91.20	269.61	7003.22	5027.93	-1895.08	-4779.57	40.4089449	-104.8451687	0.02
11304.00	91.18	269.60	7001.14	5126.63	-1895.77	-4879.54	40.4089430	-104.8455277	0.02
11404.00	91.16	269.60	6999.10	5225.34	-1896.46	-4979.52	40.4089410	-104.8458867	0.02
11504.00	91.14	269.60	6997.09	5324.04	-1897.16	-5079.50	40.4089391	-104.8462457	0.02
11604.00	91.13	269.60	6995.11	5422.75	-1897.86	-5179.47	40.4089371	-104.8466047	0.02
11704.00	91.11	269.59	6993.16	5521.45	-1898.57	-5279.45	40.4089351	-104.8469638	0.02
11804.00	91.09	269.59	6991.25	5620.16	-1899.29	-5379.43	40.4089330	-104.8473228	0.02
11904.00	91.07	269.59	6989.36	5718.87	-1900.01	-5479.41	40.4089310	-104.8476818	0.02
12004.00	91.05	269.58	6987.50	5817.59	-1900.74	-5579.39	40.4089290	-104.8480408	0.02
12104.00	91.04	269.58	6985.68	5916.30	-1901.47	-5679.37	40.4089269	-104.8483998	0.02
12204.00	91.02	269.58	6983.89	6015.01	-1902.20	-5779.35	40.4089248	-104.8487588	0.02
12304.00	91.00	269.57	6982.12	6113.73	-1902.94	-5879.33	40.4089227	-104.8491178	0.02
12404.00	90.98	269.57	6980.39	6212.45	-1903.69	-5979.32	40.4089206	-104.8494769	0.02
12504.00	90.97	269.57	6978.69	6311.17	-1904.44	-6079.30	40.4089184	-104.8498359	0.02
12604.00	90.95	269.56	6977.02	6409.89	-1905.20	-6179.28	40.4089163	-104.8501949	0.02
12704.00	90.93	269.56	6975.39	6508.61	-1905.97	-6279.27	40.4089141	-104.8505539	0.02
12804.00	90.91	269.56	6973.78	6607.33	-1906.73	-6379.25	40.4089120	-104.8509130	0.02
12904.00	90.89	269.56	6972.20	6706.06	-1907.51	-6479.23	40.4089098	-104.8512720	0.02
13004.00	90.88	269.55	6970.66	6804.78	-1908.29	-6579.22	40.4089075	-104.8516310	0.02
13104.00	90.86	269.55	6969.14	6903.51	-1909.07	-6679.21	40.4089053	-104.8519901	0.02
13204.00	90.84	269.55	6967.66	7002.24	-1909.86	-6779.19	40.4089031	-104.8523491	0.02
13304.00	90.82	269.54	6966.21	7100.97	-1910.66	-6879.18	40.4089008	-104.8527081	0.02
13404.00	90.81	269.54	6964.79	7199.70	-1911.46	-6979.16	40.4088985	-104.8530672	0.02
13504.00	90.79	269.54	6963.40	7298.43	-1912.27	-7079.15	40.4088962	-104.8534262	0.02
13604.00	90.77	269.53	6962.04	7397.17	-1913.08	-7179.14	40.4088939	-104.8537852	0.02
13704.00	90.75	269.53	6960.71	7495.90	-1913.90	-7279.13	40.4088916	-104.8541443	0.02
13804.00	90.73	269.53	6959.42	7594.64	-1914.72	-7379.11	40.4088893	-104.8545033	0.02
13904.00	90.72	269.52	6958.15	7693.37	-1915.55	-7479.10	40.4088869	-104.8548624	0.02
14004.00	90.70	269.52	6956.92	7792.11	-1916.38	-7579.09	40.4088846	-104.8552214	0.02
14104.00	90.68	269.52	6955.71	7890.85	-1917.22	-7679.08	40.4088822	-104.8555805	0.02
14204.00	90.66	269.52	6954.54	7989.59	-1918.06	-7779.07	40.4088798	-104.8559395	0.02
14304.00	90.65	269.51	6953.40	8088.34	-1918.91	-7879.06	40.4088773	-104.8562986	0.02
14404.00	90.63	269.51	6952.29	8187.08	-1919.77	-7979.05	40.4088749	-104.8566576	0.02
14504.00	90.61	269.51	6951.21	8285.82	-1920.62	-8079.04	40.4088725	-104.8570167	0.02

BOST FARM 13N-11B-L (REV-C.0) LAS.las

14604.00	90.59	269.50	6950.16	8384.57	-1921.49	-8179.03	40.4088700	-104.8573757	0.02
14704.00	90.57	269.50	6949.15	8483.32	-1922.36	-8279.02	40.4088675	-104.8577348	0.02
14804.00	90.56	269.50	6948.16	8582.06	-1923.24	-8379.01	40.4088650	-104.8580938	0.02
14904.00	90.54	269.49	6947.21	8680.81	-1924.12	-8479.01	40.4088625	-104.8584529	0.02
15004.00	90.52	269.49	6946.28	8779.56	-1925.01	-8579.00	40.4088600	-104.8588119	0.02
15104.00	90.50	269.49	6945.39	8878.31	-1925.90	-8678.99	40.4088574	-104.8591710	0.02
15204.00	90.49	269.48	6944.53	8977.07	-1926.80	-8778.98	40.4088549	-104.8595300	0.02
15304.00	90.47	269.48	6943.70	9075.82	-1927.70	-8878.97	40.4088523	-104.8598891	0.02
15404.00	90.45	269.48	6942.90	9174.58	-1928.61	-8978.97	40.4088497	-104.8602481	0.02
15504.00	90.43	269.48	6942.13	9273.33	-1929.52	-9078.96	40.4088471	-104.8606072	0.02
15604.00	90.41	269.47	6941.39	9372.09	-1930.44	-9178.95	40.4088445	-104.8609663	0.02
15704.00	90.40	269.47	6940.69	9470.85	-1931.36	-9278.95	40.4088418	-104.8613253	0.02
15804.00	90.38	269.47	6940.01	9569.61	-1932.29	-9378.94	40.4088392	-104.8616844	0.02
15904.00	90.36	269.46	6939.37	9668.37	-1933.23	-9478.93	40.4088365	-104.8620434	0.02
16004.00	90.34	269.46	6938.75	9767.13	-1934.17	-9578.93	40.4088338	-104.8624025	0.02
16104.00	90.33	269.46	6938.17	9865.89	-1935.11	-9678.92	40.4088311	-104.8627616	0.02
16204.00	90.31	269.45	6937.62	9964.65	-1936.07	-9778.92	40.4088284	-104.8631206	0.02
16304.00	90.29	269.45	6937.10	10063.42	-1937.02	-9878.91	40.4088257	-104.8634797	0.02
16404.00	90.27	269.45	6936.61	10162.18	-1937.98	-9978.90	40.4088229	-104.8638388	0.02
16504.00	90.25	269.44	6936.15	10260.95	-1938.95	-10078.90	40.4088201	-104.8641978	0.02
16604.00	90.24	269.44	6935.73	10359.71	-1939.92	-10178.89	40.4088174	-104.8645569	0.02
16704.00	90.22	269.44	6935.33	10458.48	-1940.90	-10278.89	40.4088146	-104.8649159	0.02
16804.00	90.20	269.44	6934.96	10557.25	-1941.89	-10378.88	40.4088117	-104.8652750	0.02
16904.00	90.18	269.43	6934.63	10656.02	-1942.87	-10478.88	40.4088089	-104.8656341	0.02
17004.00	90.17	269.43	6934.33	10754.79	-1943.87	-10578.87	40.4088061	-104.8659931	0.02
17104.00	90.15	269.43	6934.06	10853.56	-1944.87	-10678.86	40.4088032	-104.8663522	0.02
17204.00	90.13	269.42	6933.82	10952.34	-1945.87	-10778.86	40.4088003	-104.8667113	0.02
17304.00	90.11	269.42	6933.61	11051.11	-1946.88	-10878.85	40.4087974	-104.8670703	0.02
17404.00	90.09	269.42	6933.43	11149.89	-1947.90	-10978.85	40.4087945	-104.8674294	0.02
17504.00	90.08	269.41	6933.28	11248.66	-1948.92	-11078.84	40.4087916	-104.8677885	0.02
17604.00	90.06	269.41	6933.16	11347.44	-1949.94	-11178.84	40.4087887	-104.8681475	0.02
17704.00	90.04	269.41	6933.08	11446.21	-1950.98	-11278.83	40.4087857	-104.8685066	0.02
17804.00	90.02	269.40	6933.02	11544.99	-1952.01	-11378.83	40.4087827	-104.8688656	0.02
17904.00	90.00	269.40	6933.00	11643.77	-1953.06	-11478.82	40.4087797	-104.8692247	0.02

BOST FARM 13N-11B-L (REV-C.0) LAS.las

17928.87	90.00	269.40	6933.00	11668.34	-1953.32	-11503.69	40.4087790	-104.8693140	0.02
18004.00	90.00	269.40	6933.00	11742.55	-1954.10	-11578.82	40.4087767	-104.8695838	0.00
18028.85	90.00	269.40	6933.00	11767.10	-1954.36	-11603.67	40.4087760	-104.8696730	0.00



Planned Wellpath Report

BOST FARM 13N-11B-L (REV-C.0) PWP

Page 1 of 10



REFERENCE WELLPATH IDENTIFICATION

Operator	SRC ENERGY	Slot	SLOT#09 BOST FARM 13N-11B-L (2666'FSL & 1214'FWL, SEC.07)
Area	COLORADO	Well	BOST FARM 13N-11B-L
Field	WELD COUNTY (NAD83,TRUE NORTH)	Wellbore	BOST FARM 13N-11B-L PWB
Facility	SEC.07-T05N-R66W		

REPORT SETUP INFORMATION

Projection System	NAD83 / Lambert Colorado SP, Northern Zone (501), US feet	Software System	WellArchitect® 5.1
North Reference	True	User	Bushjamh
Scale	0.999961	Report Generated	01/03/2019 at 14:02
Convergence at slot	0.43° East	Database/Source file	WA_DEN_Denver_Defn/BOST FARM 13N-11B-L (REV-C.0) PWP PR.xml

WELLPATH LOCATION

	Local coordinates		Grid coordinates		Geographic coordinates	
	North[ft]	East[ft]	Easting[US ft]	Northing[US ft]	Latitude	Longitude
Slot Location	114.03	-44.29	3187116.44	1394423.48	40°24'50.933"N	104°49'40.822"W
Facility Reference Pt			3187161.59	1394309.79	40°24'49.806"N	104°49'40.249"W
Field Reference Pt			3171284.48	1426358.81	40°30'07.643"N	104°53'02.634"W

WELLPATH DATUM

Calculation method	Minimum curvature	IKON 12 (4') (RKB) to Facility Vertical Datum	4877.00ft
Horizontal Reference Pt	Slot	IKON 12 (4') (RKB) to Mean Sea Level	4877.00ft
Vertical Reference Pt	IKON 12 (4') (RKB)	IKON 12 (4') (RKB) to Mud Line at Slot (SLOT#09 BOST FARM 13N-11B-L (2666'FSL & 1214'FWL, SEC.07))	4877.00ft
MD Reference Pt	IKON 12 (4') (RKB)	Section Origin	N 0.00, E 0.00 ft
Field Vertical Reference	Mean Sea Level	Section Azimuth	260.44°



Planned Wellpath Report

BOST FARM 13N-11B-L (REV-C.0) PWP

Page 2 of 10



REFERENCE WELLPATH IDENTIFICATION

Operator	SRC ENERGY	Slot	SLOT#09 BOST FARM 13N-11B-L (2666'FSL & 1214'FWL, SEC.07)
Area	COLORADO	Well	BOST FARM 13N-11B-L
Field	WELD COUNTY (NAD83,TRUE NORTH)	Wellbore	BOST FARM 13N-11B-L PWB
Facility	SEC.07-T05N-R66W		

WELLPATH DATA (188 stations) † = interpolated/extrapolated station

MD [ft]	Inclination [°]	Azimuth [°]	TVD [ft]	Vert Sect [ft]	North [ft]	East [ft]	Latitude	Longitude	DLS [°/100ft]	Comments
0.00†	0.000	202.363	0.00	0.00	0.00	0.00	40°24'50.933"N	104°49'40.822"W	0.00	
4.00	0.000	202.363	4.00	0.00	0.00	0.00	40°24'50.933"N	104°49'40.822"W	0.00	Tie On
104.00†	0.000	202.363	104.00	0.00	0.00	0.00	40°24'50.933"N	104°49'40.822"W	0.00	
204.00†	0.000	202.363	204.00	0.00	0.00	0.00	40°24'50.933"N	104°49'40.822"W	0.00	
250.00	0.000	202.363	250.00	0.00	0.00	0.00	40°24'50.933"N	104°49'40.822"W	0.00	End of Tangent
304.00†	1.080	202.363	304.00	0.27	-0.47	-0.19	40°24'50.928"N	104°49'40.824"W	2.00	
404.00†	3.080	202.363	403.93	2.19	-3.83	-1.57	40°24'50.895"N	104°49'40.842"W	2.00	
504.00†	5.080	202.363	503.67	5.95	-10.41	-4.28	40°24'50.830"N	104°49'40.877"W	2.00	
604.00†	7.080	202.363	603.10	11.55	-20.20	-8.31	40°24'50.733"N	104°49'40.929"W	2.00	
704.00†	9.080	202.363	702.10	18.98	-33.20	-13.66	40°24'50.605"N	104°49'40.998"W	2.00	
804.00†	11.080	202.363	800.55	28.24	-49.38	-20.32	40°24'50.445"N	104°49'41.084"W	2.00	
904.00†	13.080	202.363	898.33	39.30	-68.74	-28.28	40°24'50.254"N	104°49'41.187"W	2.00	
1004.00†	15.080	202.363	995.32	52.17	-91.23	-37.53	40°24'50.031"N	104°49'41.307"W	2.00	
1104.00†	17.080	202.363	1091.41	66.81	-116.85	-48.07	40°24'49.778"N	104°49'41.443"W	2.00	
1124.85	17.497	202.363	1111.32	70.09	-122.58	-50.43	40°24'49.722"N	104°49'41.474"W	2.00	End of Build
1204.00†	17.497	202.363	1186.80	82.67	-144.59	-59.48	40°24'49.504"N	104°49'41.591"W	0.00	
1304.00†	17.497	202.363	1282.18	98.57	-172.39	-70.92	40°24'49.229"N	104°49'41.738"W	0.00	
1404.00†	17.497	202.363	1377.55	114.47	-200.19	-82.36	40°24'48.955"N	104°49'41.886"W	0.00	
1504.00†	17.497	202.363	1472.92	130.37	-228.00	-93.80	40°24'48.680"N	104°49'42.034"W	0.00	
1604.00†	17.497	202.363	1568.30	146.26	-255.80	-105.24	40°24'48.405"N	104°49'42.182"W	0.00	
1704.00†	17.497	202.363	1663.67	162.16	-283.61	-116.68	40°24'48.130"N	104°49'42.330"W	0.00	
1804.00†	17.497	202.363	1759.04	178.06	-311.41	-128.12	40°24'47.856"N	104°49'42.478"W	0.00	
1904.00†	17.497	202.363	1854.42	193.96	-339.22	-139.56	40°24'47.581"N	104°49'42.626"W	0.00	
2004.00†	17.497	202.363	1949.79	209.86	-367.02	-151.00	40°24'47.306"N	104°49'42.774"W	0.00	
2104.00†	17.497	202.363	2045.16	225.75	-394.83	-162.43	40°24'47.031"N	104°49'42.922"W	0.00	
2204.00†	17.497	202.363	2140.54	241.65	-422.63	-173.87	40°24'46.757"N	104°49'43.069"W	0.00	
2304.00†	17.497	202.363	2235.91	257.55	-450.43	-185.31	40°24'46.482"N	104°49'43.217"W	0.00	
2404.00†	17.497	202.363	2331.28	273.45	-478.24	-196.75	40°24'46.207"N	104°49'43.365"W	0.00	
2504.00†	17.497	202.363	2426.66	289.35	-506.04	-208.19	40°24'45.932"N	104°49'43.513"W	0.00	
2604.00†	17.497	202.363	2522.03	305.24	-533.85	-219.63	40°24'45.658"N	104°49'43.661"W	0.00	



Planned Wellpath Report

BOST FARM 13N-11B-L (REV-C.0) PWP

Page 3 of 10



REFERENCE WELLPATH IDENTIFICATION

Operator	SRC ENERGY	Slot	SLOT#09 BOST FARM 13N-11B-L (2666'FSL & 1214'FWL, SEC.07)
Area	COLORADO	Well	BOST FARM 13N-11B-L
Field	WELD COUNTY (NAD83,TRUE NORTH)	Wellbore	BOST FARM 13N-11B-L PWB
Facility	SEC.07-T05N-R66W		

WELLPATH DATA (188 stations) † = interpolated/extrapolated station

MD [ft]	Inclination [°]	Azimuth [°]	TVD [ft]	Vert Sect [ft]	North [ft]	East [ft]	Latitude	Longitude	DLS [°/100ft]	Comments
2704.00†	17.497	202.363	2617.40	321.14	-561.65	-231.07	40°24'45.383"N	104°49'43.809"W	0.00	
2804.00†	17.497	202.363	2712.78	337.04	-589.46	-242.51	40°24'45.108"N	104°49'43.957"W	0.00	
2904.00†	17.497	202.363	2808.15	352.94	-617.26	-253.95	40°24'44.833"N	104°49'44.105"W	0.00	
3004.00†	17.497	202.363	2903.52	368.84	-645.07	-265.38	40°24'44.558"N	104°49'44.252"W	0.00	
3104.00†	17.497	202.363	2998.90	384.73	-672.87	-276.82	40°24'44.284"N	104°49'44.400"W	0.00	
3204.00†	17.497	202.363	3094.27	400.63	-700.67	-288.26	40°24'44.009"N	104°49'44.548"W	0.00	
3304.00†	17.497	202.363	3189.64	416.53	-728.48	-299.70	40°24'43.734"N	104°49'44.696"W	0.00	
3404.00†	17.497	202.363	3285.02	432.43	-756.28	-311.14	40°24'43.459"N	104°49'44.844"W	0.00	
3504.00†	17.497	202.363	3380.39	448.33	-784.09	-322.58	40°24'43.185"N	104°49'44.992"W	0.00	
3604.00†	17.497	202.363	3475.76	464.22	-811.89	-334.02	40°24'42.910"N	104°49'45.140"W	0.00	
3704.00†	17.497	202.363	3571.14	480.12	-839.70	-345.46	40°24'42.635"N	104°49'45.288"W	0.00	
3804.00†	17.497	202.363	3666.51	496.02	-867.50	-356.90	40°24'42.360"N	104°49'45.435"W	0.00	
3904.00†	17.497	202.363	3761.88	511.92	-895.31	-368.34	40°24'42.086"N	104°49'45.583"W	0.00	
4004.00†	17.497	202.363	3857.26	527.82	-923.11	-379.77	40°24'41.811"N	104°49'45.731"W	0.00	
4104.00†	17.497	202.363	3952.63	543.71	-950.91	-391.21	40°24'41.536"N	104°49'45.879"W	0.00	
4204.00†	17.497	202.363	4048.00	559.61	-978.72	-402.65	40°24'41.261"N	104°49'46.027"W	0.00	
4304.00†	17.497	202.363	4143.37	575.51	-1006.52	-414.09	40°24'40.987"N	104°49'46.175"W	0.00	
4404.00†	17.497	202.363	4238.75	591.41	-1034.33	-425.53	40°24'40.712"N	104°49'46.323"W	0.00	
4504.00†	17.497	202.363	4334.12	607.31	-1062.13	-436.97	40°24'40.437"N	104°49'46.471"W	0.00	
4604.00†	17.497	202.363	4429.49	623.20	-1089.94	-448.41	40°24'40.162"N	104°49'46.618"W	0.00	
4704.00†	17.497	202.363	4524.87	639.10	-1117.74	-459.85	40°24'39.888"N	104°49'46.766"W	0.00	
4804.00†	17.497	202.363	4620.24	655.00	-1145.55	-471.29	40°24'39.613"N	104°49'46.914"W	0.00	
4904.00†	17.497	202.363	4715.61	670.90	-1173.35	-482.73	40°24'39.338"N	104°49'47.062"W	0.00	
5004.00†	17.497	202.363	4810.99	686.80	-1201.16	-494.16	40°24'39.063"N	104°49'47.210"W	0.00	
5104.00†	17.497	202.363	4906.36	702.70	-1228.96	-505.60	40°24'38.789"N	104°49'47.358"W	0.00	
5204.00†	17.497	202.363	5001.73	718.59	-1256.76	-517.04	40°24'38.514"N	104°49'47.506"W	0.00	
5304.00†	17.497	202.363	5097.11	734.49	-1284.57	-528.48	40°24'38.239"N	104°49'47.653"W	0.00	
5404.00†	17.497	202.363	5192.48	750.39	-1312.37	-539.92	40°24'37.964"N	104°49'47.801"W	0.00	
5504.00†	17.497	202.363	5287.85	766.29	-1340.18	-551.36	40°24'37.690"N	104°49'47.949"W	0.00	
5604.00†	17.497	202.363	5383.23	782.19	-1367.98	-562.80	40°24'37.415"N	104°49'48.097"W	0.00	



Planned Wellpath Report

BOST FARM 13N-11B-L (REV-C.0) PWP

Page 4 of 10



REFERENCE WELLPATH IDENTIFICATION

Operator	SRC ENERGY	Slot	SLOT#09 BOST FARM 13N-11B-L (2666'FSL & 1214'FWL, SEC.07)
Area	COLORADO	Well	BOST FARM 13N-11B-L
Field	WELD COUNTY (NAD83,TRUE NORTH)	Wellbore	BOST FARM 13N-11B-L PWB
Facility	SEC.07-T05N-R66W		

WELLPATH DATA (188 stations) † = interpolated/extrapolated station

MD [ft]	Inclination [°]	Azimuth [°]	TVD [ft]	Vert Sect [ft]	North [ft]	East [ft]	Latitude	Longitude	DLS [°/100ft]	Comments
5704.00†	17.497	202.363	5478.60	798.08	-1395.79	-574.24	40°24'37.140"N	104°49'48.245"W	0.00	
5804.00†	17.497	202.363	5573.97	813.98	-1423.59	-585.68	40°24'36.865"N	104°49'48.393"W	0.00	
5904.00†	17.497	202.363	5669.35	829.88	-1451.40	-597.12	40°24'36.591"N	104°49'48.541"W	0.00	
6004.00†	17.497	202.363	5764.72	845.78	-1479.20	-608.55	40°24'36.316"N	104°49'48.689"W	0.00	
6104.00†	17.497	202.363	5860.09	861.68	-1507.00	-619.99	40°24'36.041"N	104°49'48.836"W	0.00	
6204.00†	17.497	202.363	5955.47	877.57	-1534.81	-631.43	40°24'35.766"N	104°49'48.984"W	0.00	
6304.00†	17.497	202.363	6050.84	893.47	-1562.61	-642.87	40°24'35.492"N	104°49'49.132"W	0.00	
6404.00†	17.497	202.363	6146.21	909.37	-1590.42	-654.31	40°24'35.217"N	104°49'49.280"W	0.00	
6504.00†	17.497	202.363	6241.59	925.27	-1618.22	-665.75	40°24'34.942"N	104°49'49.428"W	0.00	
6604.00†	17.497	202.363	6336.96	941.17	-1646.03	-677.19	40°24'34.667"N	104°49'49.576"W	0.00	
6704.00†	17.497	202.363	6432.33	957.06	-1673.83	-688.63	40°24'34.393"N	104°49'49.724"W	0.00	
6804.00†	17.497	202.363	6527.71	972.96	-1701.64	-700.07	40°24'34.118"N	104°49'49.871"W	0.00	
6831.79	17.497	202.363	6554.21	977.38	-1709.36	-703.25	40°24'34.041"N	104°49'49.913"W	0.00	End of Tangent
6904.00†	20.813	219.514	6622.47	992.83	-1729.32	-715.55	40°24'33.844"N	104°49'50.072"W	9.00	
7004.00†	27.291	235.016	6713.83	1027.03	-1756.23	-745.70	40°24'33.578"N	104°49'50.461"W	9.00	
7104.00†	34.840	244.584	6799.47	1075.31	-1781.68	-790.38	40°24'33.327"N	104°49'51.039"W	9.00	
7204.00†	42.895	251.014	6877.30	1136.49	-1805.06	-848.48	40°24'33.096"N	104°49'51.790"W	9.00	
7304.00†	51.214	255.721	6945.39	1209.05	-1825.79	-918.57	40°24'32.891"N	104°49'52.696"W	9.00	
7404.00†	59.682	259.432	7002.07	1291.22	-1843.35	-998.94	40°24'32.717"N	104°49'53.735"W	9.00	
7504.00†	68.238	262.545	7045.94	1380.97	-1857.32	-1087.59	40°24'32.579"N	104°49'54.881"W	9.00	
7604.00†	76.845	265.305	7075.92	1476.08	-1867.35	-1182.36	40°24'32.480"N	104°49'56.106"W	9.00	
7704.00†	85.480	267.876	7091.27	1574.22	-1873.20	-1280.90	40°24'32.422"N	104°49'57.380"W	9.00	
7777.19	91.806	269.712	7093.00 [†]	1646.57	-1874.74	-1354.01	40°24'32.407"N	104°49'58.325"W	9.00	End of 3D Arc
7804.00†	91.801	269.712	7092.16	1673.02	-1874.87	-1380.80	40°24'32.406"N	104°49'58.671"W	0.02	
7904.00†	91.784	269.709	7089.03	1771.66	-1875.38	-1480.75	40°24'32.401"N	104°49'59.963"W	0.02	
8004.00†	91.766	269.705	7085.93	1870.31	-1875.89	-1580.71	40°24'32.395"N	104°50'01.256"W	0.02	
8104.00†	91.748	269.702	7082.86	1968.96	-1876.40	-1680.66	40°24'32.390"N	104°50'02.548"W	0.02	
8204.00†	91.730	269.699	7079.83	2067.61	-1876.93	-1780.61	40°24'32.385"N	104°50'03.840"W	0.02	
8304.00†	91.712	269.696	7076.83	2166.26	-1877.45	-1880.56	40°24'32.380"N	104°50'05.132"W	0.02	
8404.00†	91.695	269.693	7073.85	2264.92	-1877.99	-1980.52	40°24'32.374"N	104°50'06.424"W	0.02	



Planned Wellpath Report

BOST FARM 13N-11B-L (REV-C.0) PWP

Page 5 of 10



REFERENCE WELLPATH IDENTIFICATION

Operator	SRC ENERGY	Slot	SLOT#09 BOST FARM 13N-11B-L (2666'FSL & 1214'FWL, SEC.07)
Area	COLORADO	Well	BOST FARM 13N-11B-L
Field	WELD COUNTY (NAD83,TRUE NORTH)	Wellbore	BOST FARM 13N-11B-L PWB
Facility	SEC.07-T05N-R66W		

WELLPATH DATA (188 stations) † = interpolated/extrapolated station

MD [ft]	Inclination [°]	Azimuth [°]	TVD [ft]	Vert Sect [ft]	North [ft]	East [ft]	Latitude	Longitude	DLS [°/100ft]	Comments
8504.00†	91.677	269.690	7070.91	2363.58	-1878.52	-2080.47	40°24'32.369"N	104°50'07.716"W	0.02	
8604.00†	91.659	269.687	7068.00	2462.23	-1879.07	-2180.43	40°24'32.364"N	104°50'09.008"W	0.02	
8704.00†	91.641	269.684	7065.12	2560.89	-1879.62	-2280.39	40°24'32.358"N	104°50'10.300"W	0.02	
8804.00†	91.624	269.681	7062.27	2659.56	-1880.17	-2380.34	40°24'32.353"N	104°50'11.593"W	0.02	
8904.00†	91.606	269.678	7059.45	2758.22	-1880.73	-2480.30	40°24'32.347"N	104°50'12.885"W	0.02	
9004.00†	91.588	269.675	7056.67	2856.88	-1881.29	-2580.26	40°24'32.341"N	104°50'14.177"W	0.02	
9104.00†	91.570	269.672	7053.91	2955.55	-1881.86	-2680.22	40°24'32.335"N	104°50'15.469"W	0.02	
9204.00†	91.552	269.669	7051.19	3054.22	-1882.44	-2780.18	40°24'32.330"N	104°50'16.761"W	0.02	
9304.00†	91.535	269.666	7048.49	3152.89	-1883.02	-2880.15	40°24'32.324"N	104°50'18.054"W	0.02	
9404.00†	91.517	269.662	7045.83	3251.56	-1883.61	-2980.11	40°24'32.318"N	104°50'19.346"W	0.02	
9504.00†	91.499	269.659	7043.20	3350.23	-1884.20	-3080.07	40°24'32.312"N	104°50'20.638"W	0.02	
9604.00†	91.481	269.656	7040.60	3448.91	-1884.80	-3180.04	40°24'32.306"N	104°50'21.930"W	0.02	
9704.00†	91.463	269.653	7038.03	3547.59	-1885.40	-3280.00	40°24'32.300"N	104°50'23.222"W	0.02	
9804.00†	91.446	269.650	7035.49	3646.26	-1886.01	-3379.97	40°24'32.294"N	104°50'24.515"W	0.02	
9904.00†	91.428	269.647	7032.98	3744.94	-1886.62	-3479.93	40°24'32.288"N	104°50'25.807"W	0.02	
10004.00†	91.410	269.644	7030.51	3843.63	-1887.24	-3579.90	40°24'32.281"N	104°50'27.099"W	0.02	
10104.00†	91.392	269.641	7028.06	3942.31	-1887.86	-3679.87	40°24'32.275"N	104°50'28.392"W	0.02	
10204.00†	91.374	269.638	7025.65	4040.99	-1888.49	-3779.84	40°24'32.269"N	104°50'29.684"W	0.02	
10304.00†	91.357	269.635	7023.27	4139.68	-1889.13	-3879.81	40°24'32.262"N	104°50'30.976"W	0.02	
10404.00†	91.339	269.632	7020.91	4238.37	-1889.77	-3979.78	40°24'32.256"N	104°50'32.269"W	0.02	
10504.00†	91.321	269.629	7018.59	4337.06	-1890.41	-4079.75	40°24'32.249"N	104°50'33.561"W	0.02	
10604.00†	91.303	269.626	7016.30	4435.75	-1891.06	-4179.72	40°24'32.243"N	104°50'34.853"W	0.02	
10704.00†	91.285	269.622	7014.04	4534.44	-1891.72	-4279.69	40°24'32.236"N	104°50'36.146"W	0.02	
10804.00†	91.268	269.619	7011.82	4633.14	-1892.38	-4379.67	40°24'32.229"N	104°50'37.438"W	0.02	
10904.00†	91.250	269.616	7009.62	4731.83	-1893.05	-4479.64	40°24'32.222"N	104°50'38.730"W	0.02	
11004.00†	91.232	269.613	7007.45	4830.53	-1893.72	-4579.61	40°24'32.216"N	104°50'40.023"W	0.02	
11104.00†	91.214	269.610	7005.32	4929.23	-1894.40	-4679.59	40°24'32.209"N	104°50'41.315"W	0.02	
11204.00†	91.197	269.607	7003.22	5027.93	-1895.08	-4779.57	40°24'32.202"N	104°50'42.607"W	0.02	
11304.00†	91.179	269.604	7001.14	5126.63	-1895.77	-4879.54	40°24'32.195"N	104°50'43.900"W	0.02	
11404.00†	91.161	269.601	6999.10	5225.34	-1896.46	-4979.52	40°24'32.188"N	104°50'45.192"W	0.02	



Planned Wellpath Report

BOST FARM 13N-11B-L (REV-C.0) PWP

Page 6 of 10



REFERENCE WELLPATH IDENTIFICATION

Operator	SRC ENERGY	Slot	SLOT#09 BOST FARM 13N-11B-L (2666'FSL & 1214'FWL, SEC.07)
Area	COLORADO	Well	BOST FARM 13N-11B-L
Field	WELD COUNTY (NAD83,TRUE NORTH)	Wellbore	BOST FARM 13N-11B-L PWB
Facility	SEC.07-T05N-R66W		

WELLPATH DATA (188 stations) † = interpolated/extrapolated station

MD [ft]	Inclination [°]	Azimuth [°]	TVD [ft]	Vert Sect [ft]	North [ft]	East [ft]	Latitude	Longitude	DLS [°/100ft]	Comments
11504.00†	91.143	269.598	6997.09	5324.04	-1897.16	-5079.50	40°24'32.181"N	104°50'46.485"W	0.02	
11604.00†	91.125	269.595	6995.11	5422.75	-1897.86	-5179.47	40°24'32.173"N	104°50'47.777"W	0.02	
11704.00†	91.108	269.592	6993.16	5521.45	-1898.57	-5279.45	40°24'32.166"N	104°50'49.070"W	0.02	
11804.00†	91.090	269.589	6991.25	5620.16	-1899.29	-5379.43	40°24'32.159"N	104°50'50.362"W	0.02	
11904.00†	91.072	269.586	6989.36	5718.87	-1900.01	-5479.41	40°24'32.152"N	104°50'51.654"W	0.02	
12004.00†	91.054	269.583	6987.50	5817.59	-1900.74	-5579.39	40°24'32.144"N	104°50'52.947"W	0.02	
12104.00†	91.036	269.579	6985.68	5916.30	-1901.47	-5679.37	40°24'32.137"N	104°50'54.239"W	0.02	
12204.00†	91.019	269.576	6983.89	6015.01	-1902.20	-5779.35	40°24'32.129"N	104°50'55.532"W	0.02	
12304.00†	91.001	269.573	6982.12	6113.73	-1902.94	-5879.33	40°24'32.122"N	104°50'56.824"W	0.02	
12404.00†	90.983	269.570	6980.39	6212.45	-1903.69	-5979.32	40°24'32.114"N	104°50'58.117"W	0.02	
12504.00†	90.965	269.567	6978.69	6311.17	-1904.44	-6079.30	40°24'32.106"N	104°50'59.409"W	0.02	
12604.00†	90.947	269.564	6977.02	6409.89	-1905.20	-6179.28	40°24'32.099"N	104°51'00.702"W	0.02	
12704.00†	90.930	269.561	6975.39	6508.61	-1905.97	-6279.27	40°24'32.091"N	104°51'01.994"W	0.02	
12804.00†	90.912	269.558	6973.78	6607.33	-1906.73	-6379.25	40°24'32.083"N	104°51'03.287"W	0.02	
12904.00†	90.894	269.555	6972.20	6706.06	-1907.51	-6479.23	40°24'32.075"N	104°51'04.579"W	0.02	
13004.00†	90.876	269.552	6970.66	6804.78	-1908.29	-6579.22	40°24'32.067"N	104°51'05.872"W	0.02	
13104.00†	90.858	269.549	6969.14	6903.51	-1909.07	-6679.21	40°24'32.059"N	104°51'07.164"W	0.02	
13204.00†	90.841	269.546	6967.66	7002.24	-1909.86	-6779.19	40°24'32.051"N	104°51'08.457"W	0.02	
13304.00†	90.823	269.543	6966.21	7100.97	-1910.66	-6879.18	40°24'32.043"N	104°51'09.749"W	0.02	
13404.00†	90.805	269.539	6964.79	7199.70	-1911.46	-6979.16	40°24'32.035"N	104°51'11.042"W	0.02	
13504.00†	90.787	269.536	6963.40	7298.43	-1912.27	-7079.15	40°24'32.026"N	104°51'12.334"W	0.02	
13604.00†	90.769	269.533	6962.04	7397.17	-1913.08	-7179.14	40°24'32.018"N	104°51'13.627"W	0.02	
13704.00†	90.752	269.530	6960.71	7495.90	-1913.90	-7279.13	40°24'32.010"N	104°51'14.919"W	0.02	
13804.00†	90.734	269.527	6959.42	7594.64	-1914.72	-7379.11	40°24'32.001"N	104°51'16.212"W	0.02	
13904.00†	90.716	269.524	6958.15	7693.37	-1915.55	-7479.10	40°24'31.993"N	104°51'17.505"W	0.02	
14004.00†	90.698	269.521	6956.92	7792.11	-1916.38	-7579.09	40°24'31.984"N	104°51'18.797"W	0.02	
14104.00†	90.681	269.518	6955.71	7890.85	-1917.22	-7679.08	40°24'31.976"N	104°51'20.090"W	0.02	
14204.00†	90.663	269.515	6954.54	7989.59	-1918.06	-7779.07	40°24'31.967"N	104°51'21.382"W	0.02	
14304.00†	90.645	269.512	6953.40	8088.34	-1918.91	-7879.06	40°24'31.958"N	104°51'22.675"W	0.02	
14404.00†	90.627	269.509	6952.29	8187.08	-1919.77	-7979.05	40°24'31.950"N	104°51'23.967"W	0.02	



Planned Wellpath Report

BOST FARM 13N-11B-L (REV-C.0) PWP

Page 7 of 10



REFERENCE WELLPATH IDENTIFICATION

Operator	SRC ENERGY	Slot	SLOT#09 BOST FARM 13N-11B-L (2666'FSL & 1214'FWL, SEC.07)
Area	COLORADO	Well	BOST FARM 13N-11B-L
Field	WELD COUNTY (NAD83,TRUE NORTH)	Wellbore	BOST FARM 13N-11B-L PWB
Facility	SEC.07-T05N-R66W		

WELLPATH DATA (188 stations) † = interpolated/extrapolated station

MD [ft]	Inclination [°]	Azimuth [°]	TVD [ft]	Vert Sect [ft]	North [ft]	East [ft]	Latitude	Longitude	DLS [°/100ft]	Comments
14504.00†	90.609	269.506	6951.21	8285.82	-1920.62	-8079.04	40°24'31.941"N	104°51'25.260"W	0.02	
14604.00†	90.592	269.503	6950.16	8384.57	-1921.49	-8179.03	40°24'31.932"N	104°51'26.553"W	0.02	
14704.00†	90.574	269.500	6949.15	8483.32	-1922.36	-8279.02	40°24'31.923"N	104°51'27.845"W	0.02	
14804.00†	90.556	269.496	6948.16	8582.06	-1923.24	-8379.01	40°24'31.914"N	104°51'29.138"W	0.02	
14904.00†	90.538	269.493	6947.21	8680.81	-1924.12	-8479.01	40°24'31.905"N	104°51'30.430"W	0.02	
15004.00†	90.520	269.490	6946.28	8779.56	-1925.01	-8579.00	40°24'31.896"N	104°51'31.723"W	0.02	
15104.00†	90.503	269.487	6945.39	8878.31	-1925.90	-8678.99	40°24'31.887"N	104°51'33.016"W	0.02	
15204.00†	90.485	269.484	6944.53	8977.07	-1926.80	-8778.98	40°24'31.878"N	104°51'34.308"W	0.02	
15304.00†	90.467	269.481	6943.70	9075.82	-1927.70	-8878.97	40°24'31.868"N	104°51'35.601"W	0.02	
15404.00†	90.449	269.478	6942.90	9174.58	-1928.61	-8978.97	40°24'31.859"N	104°51'36.893"W	0.02	
15504.00†	90.431	269.475	6942.13	9273.33	-1929.52	-9078.96	40°24'31.850"N	104°51'38.186"W	0.02	
15604.00†	90.414	269.472	6941.39	9372.09	-1930.44	-9178.95	40°24'31.840"N	104°51'39.479"W	0.02	
15704.00†	90.396	269.469	6940.69	9470.85	-1931.36	-9278.95	40°24'31.831"N	104°51'40.771"W	0.02	
15804.00†	90.378	269.466	6940.01	9569.61	-1932.29	-9378.94	40°24'31.821"N	104°51'42.064"W	0.02	
15904.00†	90.360	269.463	6939.37	9668.37	-1933.23	-9478.93	40°24'31.811"N	104°51'43.356"W	0.02	
16004.00†	90.342	269.460	6938.75	9767.13	-1934.17	-9578.93	40°24'31.802"N	104°51'44.649"W	0.02	
16104.00†	90.325	269.457	6938.17	9865.89	-1935.11	-9678.92	40°24'31.792"N	104°51'45.942"W	0.02	
16204.00†	90.307	269.453	6937.62	9964.65	-1936.07	-9778.92	40°24'31.782"N	104°51'47.234"W	0.02	
16304.00†	90.289	269.450	6937.10	10063.42	-1937.02	-9878.91	40°24'31.772"N	104°51'48.527"W	0.02	
16404.00†	90.271	269.447	6936.61	10162.18	-1937.98	-9978.90	40°24'31.762"N	104°51'49.820"W	0.02	
16504.00†	90.254	269.444	6936.15	10260.95	-1938.95	-10078.90	40°24'31.752"N	104°51'51.112"W	0.02	
16604.00†	90.236	269.441	6935.73	10359.71	-1939.92	-10178.89	40°24'31.742"N	104°51'52.405"W	0.02	
16704.00†	90.218	269.438	6935.33	10458.48	-1940.90	-10278.89	40°24'31.732"N	104°51'53.697"W	0.02	
16804.00†	90.200	269.435	6934.96	10557.25	-1941.89	-10378.88	40°24'31.722"N	104°51'54.990"W	0.02	
16904.00†	90.182	269.432	6934.63	10656.02	-1942.87	-10478.88	40°24'31.712"N	104°51'56.283"W	0.02	
17004.00†	90.165	269.429	6934.33	10754.79	-1943.87	-10578.87	40°24'31.702"N	104°51'57.575"W	0.02	
17104.00†	90.147	269.426	6934.06	10853.56	-1944.87	-10678.86	40°24'31.692"N	104°51'58.868"W	0.02	
17204.00†	90.129	269.423	6933.82	10952.34	-1945.87	-10778.86	40°24'31.681"N	104°52'00.161"W	0.02	
17304.00†	90.111	269.420	6933.61	11051.11	-1946.88	-10878.85	40°24'31.671"N	104°52'01.453"W	0.02	
17404.00†	90.093	269.417	6933.43	11149.89	-1947.90	-10978.85	40°24'31.660"N	104°52'02.746"W	0.02	



Planned Wellpath Report

BOST FARM 13N-11B-L (REV-C.0) PWP

Page 8 of 10



REFERENCE WELLPATH IDENTIFICATION

Operator	SRC ENERGY	Slot	SLOT#09 BOST FARM 13N-11B-L (2666'FSL & 1214'FWL, SEC.07)
Area	COLORADO	Well	BOST FARM 13N-11B-L
Field	WELD COUNTY (NAD83,TRUE NORTH)	Wellbore	BOST FARM 13N-11B-L PWB
Facility	SEC.07-T05N-R66W		

WELLPATH DATA (188 stations) † = interpolated/extrapolated station

MD [ft]	Inclination [°]	Azimuth [°]	TVD [ft]	Vert Sect [ft]	North [ft]	East [ft]	Latitude	Longitude	DLS [°/100ft]	Comments
17504.00†	90.076	269.414	6933.28	11248.66	-1948.92	-11078.84	40°24'31.650"N	104°52'04.038"W	0.02	
17604.00†	90.058	269.410	6933.16	11347.44	-1949.94	-11178.84	40°24'31.639"N	104°52'05.331"W	0.02	
17704.00†	90.040	269.407	6933.08	11446.21	-1950.98	-11278.83	40°24'31.629"N	104°52'06.624"W	0.02	
17804.00†	90.022	269.404	6933.02	11544.99	-1952.01	-11378.83	40°24'31.618"N	104°52'07.916"W	0.02	
17904.00†	90.004	269.401	6933.00	11643.77	-1953.06	-11478.82	40°24'31.607"N	104°52'09.209"W	0.02	
17928.87	90.000	269.400	6933.00 ²	11668.34	-1953.32	-11503.69	40°24'31.604"N	104°52'09.530"W	0.02	End of 3D Arc
18004.00†	90.000	269.400	6933.00	11742.55	-1954.10	-11578.82	40°24'31.596"N	104°52'10.502"W	0.00	
18028.85	90.000	269.400	6933.00 ³	11767.10	-1954.36	-11603.67	40°24'31.594"N	104°52'10.823"W	0.00	End of Tangent

HOLE & CASING SECTIONS - Ref Wellbore: BOST FARM 13N-11B-L PWB Ref Wellpath: BOST FARM 13N-11B-L (REV-C.0) PWP

String/Diameter	Start MD [ft]	End MD [ft]	Interval [ft]	Start TVD [ft]	End TVD [ft]	Start N/S [ft]	Start E/W [ft]	End N/S [ft]	End E/W [ft]
13.5in Open Hole	4.00	1750.00	1746.00	4.00	1707.54	0.00	0.00	-296.40	-121.94
9.625in Casing Surface	4.00	1750.00	1746.00	4.00	1707.54	0.00	0.00	-296.40	-121.94
8.5in Open Hole	1750.00	18028.85	16278.85	1707.54	6933.00	-296.40	-121.94	-1954.36	-11603.67



Planned Wellpath Report

BOST FARM 13N-11B-L (REV-C.0) PWP

Page 9 of 10



REFERENCE WELLPATH IDENTIFICATION

Operator	SRC ENERGY	Slot	SLOT#09 BOST FARM 13N-11B-L (2666'FSL & 1214'FWL, SEC.07)
Area	COLORADO	Well	BOST FARM 13N-11B-L
Field	WELD COUNTY (NAD83,TRUE NORTH)	Wellbore	BOST FARM 13N-11B-L PWB
Facility	SEC.07-T05N-R66W		

TARGETS

Name	MD [ft]	TVD [ft]	North [ft]	East [ft]	Grid East [US ft]	Grid North [US ft]	Latitude	Longitude	Shape
SEC.07-T05N-R66W		1.00	-114.03	44.29	3187161.59	1394309.79	40°24'49.806"N	104°49'40.249"W	polygon
SEC.11-T05N-R67W		1.00	-114.03	44.29	3187161.59	1394309.79	40°24'49.806"N	104°49'40.249"W	polygon
SEC.12-T05N-R67W		1.00	-114.03	44.29	3187161.59	1394309.79	40°24'49.806"N	104°49'40.249"W	polygon
BOST FARM 13N-11B-L BHL ON PLAT (714'FSL & 360'FWL, SEC.11)		6919.00	-1951.96	-11293.71	3175838.31	1392386.07	40°24'31.619"N	104°52'06.816"W	point
BOST FARM 13N-11B-L BPZ ON PLAT (716'FSL & 460'FWL, SEC.11)		6919.00	-1950.91	-11193.73	3175938.27	1392387.88	40°24'31.630"N	104°52'05.524"W	point
BOST FARM 13N-11B-L BHL REV-1 (714'FSL & 360'FWL, SEC.11)		6933.00	-1951.94	-11293.71	3175838.31	1392386.09	40°24'31.619"N	104°52'06.816"W	point
3) BOST FARM 13N-11B-L BHL REV-2 (714'FSL & 360'FWL, SEC.11)	18028.85	6933.00	-1954.36	-11603.67	3175528.39	1392381.32	40°24'31.594"N	104°52'10.823"W	point
BOST FARM 13N-11B-L BPZ REV-1 (716'FSL & 460'FWL, SEC.11)		6933.00	-1950.87	-11193.76	3175938.24	1392387.92	40°24'31.630"N	104°52'05.524"W	point
2) BOST FARM 13N-11B-L BPZ REV-2 (709'FSL & 150'FWL, SEC.11)	17928.87	6933.00	-1953.32	-11503.69	3175628.36	1392383.12	40°24'31.604"N	104°52'09.530"W	point
1) BOST FARM 13N-12B-M TOP OF PROD REV-1 (784'FSL & 150'FEL, SEC.12)	7777.19	7093.00	-1874.74	-1354.01	3185776.73	1392538.61	40°24'32.407"N	104°49'58.325"W	point
BOST FARM 13N-12B-M TOP OF PROD ON PLAT (784'FSL & 150'FEL, SEC.12)		7148.00	-1874.72	-1353.99	3185776.75	1392538.63	40°24'32.407"N	104°49'58.325"W	point



Planned Wellpath Report

BOST FARM 13N-11B-L (REV-C.0) PWP

Page 10 of 10



REFERENCE WELLPATH IDENTIFICATION

Operator	SRC ENERGY	Slot	SLOT#09 BOST FARM 13N-11B-L (2666'FSL & 1214'FWL, SEC.07)
Area	COLORADO	Well	BOST FARM 13N-11B-L
Field	WELD COUNTY (NAD83,TRUE NORTH)	Wellbore	BOST FARM 13N-11B-L PWB
Facility	SEC.07-T05N-R66W		

SURVEY PROGRAM - Ref Wellbore: BOST FARM 13N-11B-L PWB Ref Wellpath: BOST FARM 13N-11B-L (REV-C.0) PWP

Start MD [ft]	End MD [ft]	Positional Uncertainty Model	Log Name/Comment	Wellbore
4.00	1750.00	BHI NaviTrak (Axial)		BOST FARM 13N-11B-L PWB
1750.00	18028.85	BHI AutoTrak Curve (MagCAD+IFR1, Short spacing)		BOST FARM 13N-11B-L PWB