

SRC ENERGY

Location: COLORADO Slot: SLOT#10 BOST FARM 13C-11-L (2666'FSL & 1234'FWL, SEC.07)
Field: WELD COUNTY (NAD83,TRUE NORTH) Well: BOST FARM 13C-11-L
Facility: SEC.07-T05N-R66W Wellbore: BOST FARM 13C-11-L PWB

Plot reference well/path is BOST FARM 13C-11-L (REV-C.0) PWP	Grid System: NAD83 / Lambert Colorado SP, Northern Zone (501), US feet
True vertical depths are referenced to IKON 12 (4) (RKB)	North Reference: True north
Measured depths are referenced to IKON 12 (4) (RKB)	Scale: True distance
IKON 12 (4) (RKB) to Mean Sea Level: 4877 feet	Depths are in feet
Mean Sea Level to Mud line (At Slot: SLOT#10 BOST FARM 13C-11-L (2666'FSL & 1234'FWL, SEC.07): 0 feet	Created by: hanisab on 2019-01-03
Coordinates are in feet referenced to Slot	Database: WA DENVER

Location Information

Facility Name				Grid East (US ft)	Grid North (US ft)	Latitude	Longitude
SEC.07-T05N-R66W				3187161.591	1394309.789	40°24'49.806"N	104°49'40.249"W
Slot	Local N (ft)	Local E (ft)	Grid East (US ft)	Grid North (US ft)	Latitude	Longitude	
SLOT#10 BOST FARM 13C-11-L (2666'FSL & 1234'FWL, SEC.07)	114.03	-24.24	3187136.487	1394423.627	40°24'50.933"N	104°49'40.562"W	
IKON 12 (4) (RKB) to Mud line (At Slot: SLOT#10 BOST FARM 13C-11-L (2666'FSL & 1234'FWL, SEC.07))						4877ft	
Mean Sea Level to Mud line (At Slot: SLOT#10 BOST FARM 13C-11-L (2666'FSL & 1234'FWL, SEC.07))						0ft	
IKON 12 (4) (RKB) to Mean Sea Level						4877ft	

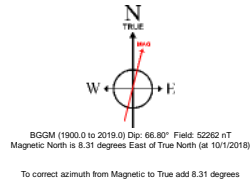
Survey Program

Start MD (ft)	End MD (ft)	Tool	Model	Log Name/Comment	Wellbore
4.00	1750.00	BHl NavTrak	BHl NavTrak (Axial)		BOST FARM 13C-11-L PWB
1750.00	18276.67	BHl AutoTrak Curve	BHl AutoTrak Curve (MagCAD+IFR1, Short spacing)		BOST FARM 13C-11-L PWB

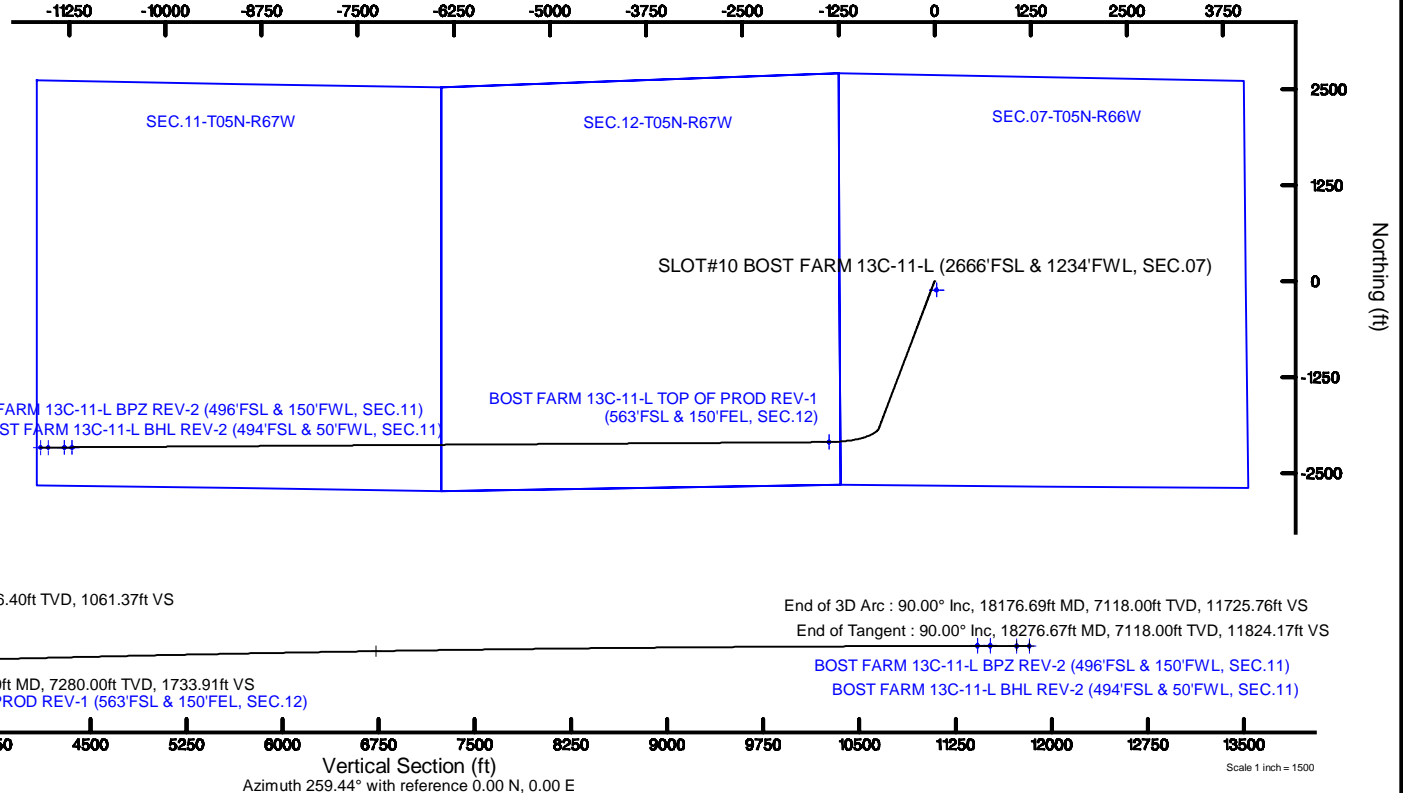


SRC ENERGY

BAKER
HUGHES
a GE company



Scale 1 inch = 2500



BOST FARM 13C-11-L (REV-C.0) LAS.las

~VERSION INFORMATION

VERS. 2.0 : CWLS LOG ASCII STANDARD-VERSION 2.0

WRAP. NO : ASCII DATA SECTION CONTAINS ONE ROW PER WELLPATH STATION

~WELL INFORMATION

#MNEM	.UNITS	DATA	:DESCRIPTION
#----	.-----	----	:-----
STRT	.ft	0.00	:START MD
STOP	.ft	18276.67	:STOP MD
STEP	.ft	0.0	:STEP (non-uniform increment)
NULL	.	-999.99	:NULL
COMP	.	SRC ENERGY	:OPERATOR
WELL	.	BOST FARM 13C-11-L	:WELL
FLD	.	WELD COUNTY (NAD83,TRUE NORTH)	:FIELD
LOC	.	COLORADO	:AREA (aka: Location)
CNTY	.	N/A	:COUNTY
STAT	.	N/A	:STATE
CTRY	.	N/A	:COUNTRY
SRVC	.	Baker Hughes	:CONTRACTOR
DATE	.	09/25/2018	:LOG REV DATE
API	.		:API NUMBER

~OTHER INFORMATION

#Software: WellArchitect(R) Version 5.1

#MNEM	.UNITS	DATA	:DESCRIPTION
#----	.-----	----	:-----
WPTYPE	.	PLANNED WELLPATH	:WELLPATH TYPE
FACILITY	.	SEC.07-T05N-R66W	:FACILITY
SLOT	.	SLOT#10 BOST FARM 13C-11-L (2666'FSL & 1234'FWL, SEC.07)	:SLOT
WELLBORE	.	BOST FARM 13C-11-L PWB	:WELLBORE
WELLPATH	.	BOST FARM 13C-11-L (REV-C.0) PWP	:WELLPATH
MDREFPT	.	IKON 12 (4') (RKB)	:MD REFERENCE POINT
TVDREFPT	.	IKON 12 (4') (RKB)	:TVD REFERENCE POINT
LCLREFPT	.	Slot	:LOCAL COORDINATE REFERENCE PT

BOST FARM 13C-11-L (REV-C.0) LAS.las

VSAZIMUTH.deg	259.44	:VERTICAL SECTION AZIMUTH
VSORIGN .ft	0.00	:VERTICAL SECTION ORIGIN NORTH
VSORIGE .ft	0.00	:VERTICAL SECTION ORIGIN EAST

~CURVE (WELLPATH) INFORMATION

#MNEM	.UNITS	:DESCRIPTION
#----	.-----	:-----
DEPT	.ft	:MEASURED DEPTH
INC	.deg	:INCLINATION
AZI	.deg	:AZIMUTH
TVD	.ft	:TRUE VERTICAL DEPTH
SECT	.ft	:CROSS SECTION (CURTAIN/VERTICAL)
LOCALN	.ft	:LOCAL NORTH
LOCALE	.ft	:LOCAL EAST
LAT	.deg	:LATITUDE
LONG	.deg	:LONGITUDE
DLS	.deg/100ft	:DOGLEG SEVERITY

~ASCII DATA

0.00	0.00	200.67	0.00	0.00	0.00	0.00	40.4141480	-104.8279340	0.00
4.00	0.00	200.67	4.00	0.00	0.00	0.00	40.4141480	-104.8279340	0.00
104.00	0.00	200.67	104.00	0.00	0.00	0.00	40.4141480	-104.8279340	0.00
204.00	0.00	200.67	204.00	0.00	0.00	0.00	40.4141480	-104.8279340	0.00
300.00	0.00	200.67	300.00	0.00	0.00	0.00	40.4141480	-104.8279340	0.00
304.00	0.08	200.67	304.00	0.00	0.00	0.00	40.4141480	-104.8279340	2.00
404.00	2.08	200.67	403.98	0.98	-1.77	-0.67	40.4141432	-104.8279364	2.00
504.00	4.08	200.67	503.83	3.76	-6.79	-2.56	40.4141294	-104.8279432	2.00
604.00	6.08	200.67	603.43	8.36	-15.08	-5.69	40.4141066	-104.8279544	2.00
704.00	8.08	200.67	702.66	14.75	-26.61	-10.04	40.4140750	-104.8279701	2.00
804.00	10.08	200.67	801.40	22.93	-41.37	-15.61	40.4140344	-104.8279901	2.00
904.00	12.08	200.67	899.54	32.90	-59.35	-22.40	40.4139851	-104.8280144	2.00
1004.00	14.08	200.67	996.94	44.63	-80.52	-30.38	40.4139270	-104.8280431	2.00
1104.00	16.08	200.67	1093.49	58.12	-104.87	-39.57	40.4138602	-104.8280761	2.00
1204.00	18.08	200.67	1189.07	73.35	-132.34	-49.94	40.4137847	-104.8281133	2.00

BOST FARM 13C-11-L (REV-C.0) LAS.las

1246.35	18.93	200.67	1229.24	80.32	-144.92	-54.68	40.4137502	-104.8281304	2.00
1304.00	18.93	200.67	1283.77	90.02	-162.41	-61.28	40.4137022	-104.8281541	0.00
1404.00	18.93	200.67	1378.36	106.84	-192.76	-72.74	40.4136189	-104.8281952	0.00
1504.00	18.93	200.67	1472.95	123.66	-223.11	-84.19	40.4135356	-104.8282363	0.00
1604.00	18.93	200.67	1567.54	140.48	-253.46	-95.64	40.4134523	-104.8282774	0.00
1704.00	18.93	200.67	1662.14	157.30	-283.80	-107.09	40.4133690	-104.8283186	0.00
1804.00	18.93	200.67	1756.73	174.12	-314.15	-118.54	40.4132857	-104.8283597	0.00
1904.00	18.93	200.67	1851.32	190.94	-344.50	-129.99	40.4132024	-104.8284008	0.00
2004.00	18.93	200.67	1945.92	207.76	-374.85	-141.44	40.4131191	-104.8284419	0.00
2104.00	18.93	200.67	2040.51	224.58	-405.20	-152.89	40.4130358	-104.8284831	0.00
2204.00	18.93	200.67	2135.10	241.40	-435.54	-164.35	40.4129525	-104.8285242	0.00
2304.00	18.93	200.67	2229.70	258.22	-465.89	-175.80	40.4128692	-104.8285653	0.00
2404.00	18.93	200.67	2324.29	275.04	-496.24	-187.25	40.4127859	-104.8286064	0.00
2504.00	18.93	200.67	2418.88	291.86	-526.59	-198.70	40.4127026	-104.8286475	0.00
2604.00	18.93	200.67	2513.48	308.68	-556.94	-210.15	40.4126193	-104.8286887	0.00
2704.00	18.93	200.67	2608.07	325.50	-587.28	-221.60	40.4125360	-104.8287298	0.00
2804.00	18.93	200.67	2702.66	342.32	-617.63	-233.05	40.4124527	-104.8287709	0.00
2904.00	18.93	200.67	2797.26	359.14	-647.98	-244.50	40.4123694	-104.8288120	0.00
3004.00	18.93	200.67	2891.85	375.96	-678.33	-255.96	40.4122861	-104.8288531	0.00
3104.00	18.93	200.67	2986.44	392.78	-708.67	-267.41	40.4122028	-104.8288943	0.00
3204.00	18.93	200.67	3081.04	409.60	-739.02	-278.86	40.4121195	-104.8289354	0.00
3304.00	18.93	200.67	3175.63	426.42	-769.37	-290.31	40.4120362	-104.8289765	0.00
3404.00	18.93	200.67	3270.22	443.24	-799.72	-301.76	40.4119529	-104.8290176	0.00
3504.00	18.93	200.67	3364.82	460.06	-830.07	-313.21	40.4118696	-104.8290588	0.00
3604.00	18.93	200.67	3459.41	476.88	-860.41	-324.66	40.4117863	-104.8290999	0.00
3704.00	18.93	200.67	3554.00	493.70	-890.76	-336.12	40.4117030	-104.8291410	0.00
3804.00	18.93	200.67	3648.60	510.52	-921.11	-347.57	40.4116196	-104.8291821	0.00
3904.00	18.93	200.67	3743.19	527.34	-951.46	-359.02	40.4115363	-104.8292232	0.00
4004.00	18.93	200.67	3837.78	544.17	-981.80	-370.47	40.4114530	-104.8292644	0.00
4104.00	18.93	200.67	3932.38	560.99	-1012.15	-381.92	40.4113697	-104.8293055	0.00
4204.00	18.93	200.67	4026.97	577.81	-1042.50	-393.37	40.4112864	-104.8293466	0.00
4304.00	18.93	200.67	4121.56	594.63	-1072.85	-404.82	40.4112031	-104.8293877	0.00
4404.00	18.93	200.67	4216.16	611.45	-1103.20	-416.27	40.4111198	-104.8294288	0.00
4504.00	18.93	200.67	4310.75	628.27	-1133.54	-427.73	40.4110365	-104.8294699	0.00

BOST FARM 13C-11-L (REV-C.0) LAS.las

4604.00	18.93	200.67	4405.34	645.09	-1163.89	-439.18	40.4109532	-104.8295111	0.00
4704.00	18.93	200.67	4499.93	661.91	-1194.24	-450.63	40.4108699	-104.8295522	0.00
4804.00	18.93	200.67	4594.53	678.73	-1224.59	-462.08	40.4107866	-104.8295933	0.00
4904.00	18.93	200.67	4689.12	695.55	-1254.93	-473.53	40.4107033	-104.8296344	0.00
5004.00	18.93	200.67	4783.71	712.37	-1285.28	-484.98	40.4106200	-104.8296755	0.00
5104.00	18.93	200.67	4878.31	729.19	-1315.63	-496.43	40.4105367	-104.8297167	0.00
5204.00	18.93	200.67	4972.90	746.01	-1345.98	-507.88	40.4104534	-104.8297578	0.00
5304.00	18.93	200.67	5067.49	762.83	-1376.33	-519.34	40.4103701	-104.8297989	0.00
5404.00	18.93	200.67	5162.09	779.65	-1406.67	-530.79	40.4102868	-104.8298400	0.00
5504.00	18.93	200.67	5256.68	796.47	-1437.02	-542.24	40.4102035	-104.8298811	0.00
5604.00	18.93	200.67	5351.27	813.29	-1467.37	-553.69	40.4101202	-104.8299223	0.00
5704.00	18.93	200.67	5445.87	830.11	-1497.72	-565.14	40.4100369	-104.8299634	0.00
5804.00	18.93	200.67	5540.46	846.93	-1528.06	-576.59	40.4099536	-104.8300045	0.00
5904.00	18.93	200.67	5635.05	863.75	-1558.41	-588.04	40.4098703	-104.8300456	0.00
6004.00	18.93	200.67	5729.65	880.57	-1588.76	-599.49	40.4097870	-104.8300867	0.00
6104.00	18.93	200.67	5824.24	897.39	-1619.11	-610.95	40.4097037	-104.8301278	0.00
6204.00	18.93	200.67	5918.83	914.21	-1649.46	-622.40	40.4096204	-104.8301690	0.00
6304.00	18.93	200.67	6013.43	931.03	-1679.80	-633.85	40.4095371	-104.8302101	0.00
6404.00	18.93	200.67	6108.02	947.85	-1710.15	-645.30	40.4094538	-104.8302512	0.00
6504.00	18.93	200.67	6202.61	964.67	-1740.50	-656.75	40.4093705	-104.8302923	0.00
6604.00	18.93	200.67	6297.21	981.49	-1770.85	-668.20	40.4092872	-104.8303334	0.00
6704.00	18.93	200.67	6391.80	998.31	-1801.20	-679.65	40.4092039	-104.8303745	0.00
6804.00	18.93	200.67	6486.39	1015.13	-1831.54	-691.11	40.4091206	-104.8304157	0.00
6904.00	18.93	200.67	6580.99	1031.95	-1861.89	-702.56	40.4090373	-104.8304568	0.00
7004.00	18.93	200.67	6675.58	1048.77	-1892.24	-714.01	40.4089540	-104.8304979	0.00
7078.87	18.93	200.67	6746.40	1061.37	-1914.96	-722.58	40.4088916	-104.8305287	0.00
7104.00	19.83	206.92	6770.11	1066.07	-1922.57	-725.95	40.4088707	-104.8305408	9.00
7204.00	25.12	226.18	6862.61	1094.20	-1952.45	-748.99	40.4087887	-104.8306235	9.00
7304.00	32.02	238.37	6950.45	1136.78	-1981.11	-786.96	40.4087100	-104.8307598	9.00
7404.00	39.69	246.43	7031.49	1192.74	-2007.83	-838.90	40.4086367	-104.8309464	9.00
7504.00	47.77	252.20	7103.72	1260.73	-2031.97	-903.56	40.4085704	-104.8311785	9.00
7604.00	56.07	256.63	7165.36	1339.05	-2052.93	-979.33	40.4085129	-104.8314506	9.00
7704.00	64.50	260.27	7214.89	1425.79	-2070.18	-1064.34	40.4084655	-104.8317559	9.00
7804.00	73.01	263.42	7251.10	1518.81	-2083.31	-1156.52	40.4084294	-104.8320869	9.00

BOST FARM 13C-11-L (REV-C.0) LAS.las

7904.00	81.56	266.30	7273.10	1615.81	-2092.00	-1253.57	40.4084056	-104.8324354	9.00
8004.00	90.13	269.05	7280.34	1714.42	-2096.02	-1353.13	40.4083945	-104.8327928	9.00
8023.79	91.83	269.59	7280.00	1733.91	-2096.26	-1372.91	40.4083939	-104.8328639	9.00
8104.00	91.81	269.60	7277.45	1812.82	-2096.83	-1453.08	40.4083923	-104.8331518	0.02
8204.00	91.80	269.60	7274.30	1911.21	-2097.53	-1553.03	40.4083904	-104.8335107	0.02
8304.00	91.78	269.60	7271.18	2009.59	-2098.24	-1652.98	40.4083884	-104.8338696	0.02
8404.00	91.76	269.60	7268.09	2107.98	-2098.95	-1752.93	40.4083864	-104.8342285	0.02
8504.00	91.74	269.60	7265.04	2206.37	-2099.65	-1852.88	40.4083845	-104.8345874	0.02
8604.00	91.72	269.60	7262.01	2304.75	-2100.36	-1952.83	40.4083825	-104.8349463	0.02
8704.00	91.71	269.60	7259.02	2403.14	-2101.06	-2052.78	40.4083806	-104.8353052	0.02
8804.00	91.69	269.60	7256.06	2501.53	-2101.77	-2152.74	40.4083786	-104.8356641	0.02
8904.00	91.67	269.60	7253.13	2599.92	-2102.48	-2252.69	40.4083766	-104.8360230	0.02
9004.00	91.65	269.60	7250.23	2698.31	-2103.18	-2352.65	40.4083747	-104.8363819	0.02
9104.00	91.63	269.60	7247.36	2796.70	-2103.89	-2452.60	40.4083727	-104.8367409	0.02
9204.00	91.62	269.60	7244.53	2895.10	-2104.59	-2552.56	40.4083708	-104.8370998	0.02
9304.00	91.60	269.60	7241.72	2993.49	-2105.29	-2652.52	40.4083688	-104.8374587	0.02
9404.00	91.58	269.60	7238.95	3091.88	-2106.00	-2752.48	40.4083668	-104.8378177	0.02
9504.00	91.56	269.60	7236.21	3190.28	-2106.70	-2852.44	40.4083649	-104.8381766	0.02
9604.00	91.54	269.60	7233.50	3288.68	-2107.41	-2952.40	40.4083629	-104.8385355	0.02
9704.00	91.53	269.60	7230.82	3387.07	-2108.11	-3052.36	40.4083609	-104.8388945	0.02
9804.00	91.51	269.60	7228.17	3485.47	-2108.81	-3152.32	40.4083590	-104.8392534	0.02
9904.00	91.49	269.60	7225.56	3583.87	-2109.52	-3252.28	40.4083570	-104.8396124	0.02
10004.00	91.47	269.60	7222.97	3682.27	-2110.22	-3352.25	40.4083550	-104.8399713	0.02
10104.00	91.45	269.60	7220.42	3780.67	-2110.92	-3452.21	40.4083531	-104.8403303	0.02
10204.00	91.44	269.60	7217.90	3879.07	-2111.62	-3552.18	40.4083511	-104.8406893	0.02
10304.00	91.42	269.60	7215.41	3977.47	-2112.32	-3652.15	40.4083492	-104.8410482	0.02
10404.00	91.40	269.60	7212.95	4075.87	-2113.03	-3752.11	40.4083472	-104.8414072	0.02
10504.00	91.38	269.60	7210.52	4174.27	-2113.73	-3852.08	40.4083452	-104.8417661	0.02
10604.00	91.36	269.60	7208.13	4272.68	-2114.43	-3952.05	40.4083432	-104.8421251	0.02
10704.00	91.35	269.60	7205.76	4371.08	-2115.13	-4052.02	40.4083413	-104.8424841	0.02
10804.00	91.33	269.60	7203.43	4469.49	-2115.83	-4151.99	40.4083393	-104.8428431	0.02
10904.00	91.31	269.60	7201.13	4567.89	-2116.53	-4251.96	40.4083373	-104.8432020	0.02
11004.00	91.29	269.60	7198.86	4666.30	-2117.23	-4351.93	40.4083354	-104.8435610	0.02
11104.00	91.27	269.60	7196.62	4764.70	-2117.93	-4451.91	40.4083334	-104.8439200	0.02

BOST FARM 13C-11-L (REV-C.0) LAS.las

11204.00	91.26	269.60	7194.41	4863.11	-2118.63	-4551.88	40.4083314	-104.8442790	0.02
11304.00	91.24	269.60	7192.23	4961.52	-2119.33	-4651.85	40.4083295	-104.8446380	0.02
11404.00	91.22	269.60	7190.09	5059.93	-2120.03	-4751.83	40.4083275	-104.8449970	0.02
11504.00	91.20	269.60	7187.98	5158.34	-2120.73	-4851.80	40.4083255	-104.8453560	0.02
11604.00	91.18	269.60	7185.90	5256.75	-2121.43	-4951.78	40.4083235	-104.8457150	0.02
11704.00	91.17	269.60	7183.85	5355.16	-2122.12	-5051.75	40.4083216	-104.8460740	0.02
11804.00	91.15	269.60	7181.83	5453.57	-2122.82	-5151.73	40.4083196	-104.8464330	0.02
11904.00	91.13	269.60	7179.84	5551.98	-2123.52	-5251.71	40.4083176	-104.8467920	0.02
12004.00	91.11	269.60	7177.88	5650.39	-2124.22	-5351.69	40.4083157	-104.8471510	0.02
12104.00	91.09	269.60	7175.96	5748.81	-2124.92	-5451.67	40.4083137	-104.8475100	0.02
12204.00	91.08	269.60	7174.07	5847.22	-2125.61	-5551.65	40.4083117	-104.8478690	0.02
12304.00	91.06	269.60	7172.20	5945.63	-2126.31	-5651.63	40.4083097	-104.8482280	0.02
12404.00	91.04	269.60	7170.37	6044.05	-2127.01	-5751.61	40.4083078	-104.8485870	0.02
12504.00	91.02	269.60	7168.58	6142.46	-2127.70	-5851.59	40.4083058	-104.8489460	0.02
12604.00	91.00	269.60	7166.81	6240.88	-2128.40	-5951.57	40.4083038	-104.8493050	0.02
12704.00	90.99	269.60	7165.07	6339.29	-2129.10	-6051.55	40.4083018	-104.8496641	0.02
12804.00	90.97	269.60	7163.37	6437.71	-2129.79	-6151.54	40.4082998	-104.8500231	0.02
12904.00	90.95	269.60	7161.69	6536.13	-2130.49	-6251.52	40.4082979	-104.8503821	0.02
13004.00	90.93	269.60	7160.05	6634.54	-2131.18	-6351.50	40.4082959	-104.8507411	0.02
13104.00	90.91	269.60	7158.44	6732.96	-2131.88	-6451.49	40.4082939	-104.8511002	0.02
13204.00	90.90	269.60	7156.86	6831.38	-2132.57	-6551.47	40.4082919	-104.8514592	0.02
13304.00	90.88	269.60	7155.32	6929.80	-2133.27	-6651.46	40.4082900	-104.8518182	0.02
13404.00	90.86	269.60	7153.80	7028.22	-2133.96	-6751.45	40.4082880	-104.8521772	0.02
13504.00	90.84	269.60	7152.32	7126.64	-2134.65	-6851.43	40.4082860	-104.8525363	0.02
13604.00	90.82	269.60	7150.86	7225.06	-2135.35	-6951.42	40.4082840	-104.8528953	0.02
13704.00	90.81	269.60	7149.44	7323.48	-2136.04	-7051.41	40.4082820	-104.8532543	0.02
13804.00	90.79	269.60	7148.05	7421.90	-2136.73	-7151.39	40.4082801	-104.8536134	0.02
13904.00	90.77	269.60	7146.69	7520.32	-2137.43	-7251.38	40.4082781	-104.8539724	0.02
14004.00	90.75	269.60	7145.37	7618.74	-2138.12	-7351.37	40.4082761	-104.8543315	0.02
14104.00	90.73	269.60	7144.07	7717.16	-2138.81	-7451.36	40.4082741	-104.8546905	0.02
14204.00	90.72	269.60	7142.80	7815.59	-2139.50	-7551.35	40.4082721	-104.8550496	0.02
14304.00	90.70	269.60	7141.57	7914.01	-2140.20	-7651.34	40.4082701	-104.8554086	0.02
14404.00	90.68	269.60	7140.37	8012.43	-2140.89	-7751.33	40.4082682	-104.8557676	0.02
14504.00	90.66	269.60	7139.20	8110.85	-2141.58	-7851.32	40.4082662	-104.8561267	0.02

BOST FARM 13C-11-L (REV-C.0) LAS.las

14604.00	90.64	269.60	7138.06	8209.28	-2142.27	-7951.31	40.4082642	-104.8564857	0.02
14704.00	90.63	269.60	7136.95	8307.70	-2142.96	-8051.30	40.4082622	-104.8568448	0.02
14804.00	90.61	269.60	7135.88	8406.13	-2143.65	-8151.30	40.4082602	-104.8572038	0.02
14904.00	90.59	269.61	7134.83	8504.55	-2144.34	-8251.29	40.4082582	-104.8575629	0.02
15004.00	90.57	269.61	7133.82	8602.97	-2145.03	-8351.28	40.4082562	-104.8579220	0.02
15104.00	90.55	269.61	7132.84	8701.40	-2145.72	-8451.27	40.4082543	-104.8582810	0.02
15204.00	90.54	269.61	7131.89	8799.82	-2146.41	-8551.27	40.4082523	-104.8586401	0.02
15304.00	90.52	269.61	7130.97	8898.25	-2147.10	-8651.26	40.4082503	-104.8589991	0.02
15404.00	90.50	269.61	7130.08	8996.68	-2147.79	-8751.25	40.4082483	-104.8593582	0.02
15504.00	90.48	269.61	7129.23	9095.10	-2148.48	-8851.25	40.4082463	-104.8597172	0.02
15604.00	90.46	269.61	7128.40	9193.53	-2149.17	-8951.24	40.4082443	-104.8600763	0.02
15704.00	90.45	269.61	7127.61	9291.95	-2149.85	-9051.24	40.4082423	-104.8604354	0.02
15804.00	90.43	269.61	7126.85	9390.38	-2150.54	-9151.23	40.4082403	-104.8607944	0.02
15904.00	90.41	269.61	7126.12	9488.81	-2151.23	-9251.23	40.4082383	-104.8611535	0.02
16004.00	90.39	269.61	7125.42	9587.23	-2151.92	-9351.22	40.4082364	-104.8615125	0.02
16104.00	90.37	269.61	7124.75	9685.66	-2152.61	-9451.22	40.4082344	-104.8618716	0.02
16204.00	90.36	269.61	7124.12	9784.09	-2153.29	-9551.21	40.4082324	-104.8622307	0.02
16304.00	90.34	269.61	7123.51	9882.52	-2153.98	-9651.21	40.4082304	-104.8625897	0.02
16404.00	90.32	269.61	7122.94	9980.94	-2154.67	-9751.20	40.4082284	-104.8629488	0.02
16504.00	90.30	269.61	7122.40	10079.37	-2155.35	-9851.20	40.4082264	-104.8633079	0.02
16604.00	90.28	269.61	7121.89	10177.80	-2156.04	-9951.20	40.4082244	-104.8636669	0.02
16704.00	90.27	269.61	7121.41	10276.23	-2156.72	-10051.19	40.4082224	-104.8640260	0.02
16804.00	90.25	269.61	7120.96	10374.65	-2157.41	-10151.19	40.4082204	-104.8643851	0.02
16904.00	90.23	269.61	7120.55	10473.08	-2158.09	-10251.19	40.4082184	-104.8647442	0.02
17004.00	90.21	269.61	7120.16	10571.51	-2158.78	-10351.18	40.4082164	-104.8651032	0.02
17104.00	90.19	269.61	7119.81	10669.94	-2159.46	-10451.18	40.4082144	-104.8654623	0.02
17204.00	90.18	269.61	7119.49	10768.37	-2160.15	-10551.18	40.4082124	-104.8658214	0.02
17304.00	90.16	269.61	7119.20	10866.79	-2160.83	-10651.18	40.4082104	-104.8661804	0.02
17404.00	90.14	269.61	7118.94	10965.22	-2161.52	-10751.17	40.4082084	-104.8665395	0.02
17504.00	90.12	269.61	7118.71	11063.65	-2162.20	-10851.17	40.4082064	-104.8668986	0.02
17604.00	90.10	269.61	7118.52	11162.08	-2162.88	-10951.17	40.4082044	-104.8672576	0.02
17704.00	90.09	269.61	7118.35	11260.51	-2163.57	-11051.16	40.4082024	-104.8676167	0.02
17804.00	90.07	269.61	7118.22	11358.94	-2164.25	-11151.16	40.4082005	-104.8679758	0.02
17904.00	90.05	269.61	7118.12	11457.36	-2164.93	-11251.16	40.4081985	-104.8683349	0.02

BOST FARM 13C-11-L (REV-C.0) LAS.las

18004.00	90.03	269.61	7118.05	11555.79	-2165.62	-11351.16	40.4081965	-104.8686939	0.02
18104.00	90.01	269.61	7118.01	11654.22	-2166.30	-11451.16	40.4081945	-104.8690530	0.02
18176.69	90.00	269.61	7118.00	11725.76	-2166.79	-11523.84	40.4081930	-104.8693140	0.02
18204.00	90.00	269.61	7118.00	11752.65	-2166.98	-11551.15	40.4081925	-104.8694121	0.00
18276.67	90.00	269.61	7118.00	11824.17	-2167.48	-11623.82	40.4081910	-104.8696730	0.00



Planned Wellpath Report

BOST FARM 13C-11-L (REV-C.0) PWP

Page 1 of 10



REFERENCE WELLPATH IDENTIFICATION

Operator	SRC ENERGY	Slot	SLOT#10 BOST FARM 13C-11-L (2666'FSL & 1234'FWL, SEC.07)
Area	COLORADO	Well	BOST FARM 13C-11-L
Field	WELD COUNTY (NAD83,TRUE NORTH)	Wellbore	BOST FARM 13C-11-L PWB
Facility	SEC.07-T05N-R66W		

REPORT SETUP INFORMATION

Projection System	NAD83 / Lambert Colorado SP, Northern Zone (501), US feet	Software System	WellArchitect® 5.1
North Reference	True	User	Bushjamh
Scale	0.999961	Report Generated	01/03/2019 at 14:01
Convergence at slot	0.43° East	Database/Source file	WA_DEN_Denver_Defn/BOST FARM 13C-11-L (REV-C.0) PWP PR.xml

WELLPATH LOCATION

	Local coordinates		Grid coordinates		Geographic coordinates	
	North[ft]	East[ft]	Easting[US ft]	Northing[US ft]	Latitude	Longitude
Slot Location	114.03	-24.24	3187136.49	1394423.63	40°24'50.933"N	104°49'40.562"W
Facility Reference Pt			3187161.59	1394309.79	40°24'49.806"N	104°49'40.249"W
Field Reference Pt			3171284.48	1426358.81	40°30'07.643"N	104°53'02.634"W

WELLPATH DATUM

Calculation method	Minimum curvature	IKON 12 (4') (RKB) to Facility Vertical Datum	4877.00ft
Horizontal Reference Pt	Slot	IKON 12 (4') (RKB) to Mean Sea Level	4877.00ft
Vertical Reference Pt	IKON 12 (4') (RKB)	IKON 12 (4') (RKB) to Mud Line at Slot (SLOT#10 BOST FARM 13C-11-L (2666'FSL & 1234'FWL, SEC.07))	4877.00ft
MD Reference Pt	IKON 12 (4') (RKB)	Section Origin	N 0.00, E 0.00 ft
Field Vertical Reference	Mean Sea Level	Section Azimuth	259.44°



Planned Wellpath Report

BOST FARM 13C-11-L (REV-C.0) PWP

Page 2 of 10



REFERENCE WELLPATH IDENTIFICATION

Operator	SRC ENERGY	Slot	SLOT#10 BOST FARM 13C-11-L (2666'FSL & 1234'FWL, SEC.07)
Area	COLORADO	Well	BOST FARM 13C-11-L
Field	WELD COUNTY (NAD83,TRUE NORTH)	Wellbore	BOST FARM 13C-11-L PWB
Facility	SEC.07-T05N-R66W		

WELLPATH DATA (190 stations) † = interpolated/extrapolated station

MD [ft]	Inclination [°]	Azimuth [°]	TVD [ft]	Vert Sect [ft]	North [ft]	East [ft]	Latitude	Longitude	DLS [°/100ft]	Comments
0.00†	0.000	200.673	0.00	0.00	0.00	0.00	40°24'50.933"N	104°49'40.562"W	0.00	
4.00	0.000	200.673	4.00	0.00	0.00	0.00	40°24'50.933"N	104°49'40.562"W	0.00	Tie On
104.00†	0.000	200.673	104.00	0.00	0.00	0.00	40°24'50.933"N	104°49'40.562"W	0.00	
204.00†	0.000	200.673	204.00	0.00	0.00	0.00	40°24'50.933"N	104°49'40.562"W	0.00	
300.00	0.000	200.673	300.00	0.00	0.00	0.00	40°24'50.933"N	104°49'40.562"W	0.00	End of Tangent
304.00†	0.080	200.673	304.00	0.00	0.00	0.00	40°24'50.933"N	104°49'40.562"W	2.00	
404.00†	2.080	200.673	403.98	0.98	-1.77	-0.67	40°24'50.915"N	104°49'40.571"W	2.00	
504.00†	4.080	200.673	503.83	3.76	-6.79	-2.56	40°24'50.866"N	104°49'40.596"W	2.00	
604.00†	6.080	200.673	603.43	8.36	-15.08	-5.69	40°24'50.784"N	104°49'40.636"W	2.00	
704.00†	8.080	200.673	702.66	14.75	-26.61	-10.04	40°24'50.670"N	104°49'40.692"W	2.00	
804.00†	10.080	200.673	801.40	22.93	-41.37	-15.61	40°24'50.524"N	104°49'40.764"W	2.00	
904.00†	12.080	200.673	899.54	32.90	-59.35	-22.40	40°24'50.346"N	104°49'40.852"W	2.00	
1004.00†	14.080	200.673	996.94	44.63	-80.52	-30.38	40°24'50.137"N	104°49'40.955"W	2.00	
1104.00†	16.080	200.673	1093.49	58.12	-104.87	-39.57	40°24'49.897"N	104°49'41.074"W	2.00	
1204.00†	18.080	200.673	1189.07	73.35	-132.34	-49.94	40°24'49.625"N	104°49'41.208"W	2.00	
1246.35	18.927	200.673	1229.24	80.32	-144.92	-54.68	40°24'49.501"N	104°49'41.269"W	2.00	End of Build
1304.00†	18.927	200.673	1283.77	90.02	-162.41	-61.28	40°24'49.328"N	104°49'41.355"W	0.00	
1404.00†	18.927	200.673	1378.36	106.84	-192.76	-72.74	40°24'49.028"N	104°49'41.503"W	0.00	
1504.00†	18.927	200.673	1472.95	123.66	-223.11	-84.19	40°24'48.728"N	104°49'41.651"W	0.00	
1604.00†	18.927	200.673	1567.54	140.48	-253.46	-95.64	40°24'48.428"N	104°49'41.799"W	0.00	
1704.00†	18.927	200.673	1662.14	157.30	-283.80	-107.09	40°24'48.128"N	104°49'41.947"W	0.00	
1804.00†	18.927	200.673	1756.73	174.12	-314.15	-118.54	40°24'47.828"N	104°49'42.095"W	0.00	
1904.00†	18.927	200.673	1851.32	190.94	-344.50	-129.99	40°24'47.529"N	104°49'42.243"W	0.00	
2004.00†	18.927	200.673	1945.92	207.76	-374.85	-141.44	40°24'47.229"N	104°49'42.391"W	0.00	
2104.00†	18.927	200.673	2040.51	224.58	-405.20	-152.89	40°24'46.929"N	104°49'42.539"W	0.00	
2204.00†	18.927	200.673	2135.10	241.40	-435.54	-164.35	40°24'46.629"N	104°49'42.687"W	0.00	
2304.00†	18.927	200.673	2229.70	258.22	-465.89	-175.80	40°24'46.329"N	104°49'42.835"W	0.00	
2404.00†	18.927	200.673	2324.29	275.04	-496.24	-187.25	40°24'46.029"N	104°49'42.983"W	0.00	
2504.00†	18.927	200.673	2418.88	291.86	-526.59	-198.70	40°24'45.729"N	104°49'43.131"W	0.00	
2604.00†	18.927	200.673	2513.48	308.68	-556.94	-210.15	40°24'45.429"N	104°49'43.279"W	0.00	



Planned Wellpath Report

BOST FARM 13C-11-L (REV-C.0) PWP

Page 3 of 10



REFERENCE WELLPATH IDENTIFICATION

Operator	SRC ENERGY	Slot	SLOT#10 BOST FARM 13C-11-L (2666'FSL & 1234'FWL, SEC.07)
Area	COLORADO	Well	BOST FARM 13C-11-L
Field	WELD COUNTY (NAD83,TRUE NORTH)	Wellbore	BOST FARM 13C-11-L PWB
Facility	SEC.07-T05N-R66W		

WELLPATH DATA (190 stations) † = interpolated/extrapolated station

MD [ft]	Inclination [°]	Azimuth [°]	TVD [ft]	Vert Sect [ft]	North [ft]	East [ft]	Latitude	Longitude	DLS [°/100ft]	Comments
2704.00†	18.927	200.673	2608.07	325.50	-587.28	-221.60	40°24'45.129"N	104°49'43.427"W	0.00	
2804.00†	18.927	200.673	2702.66	342.32	-617.63	-233.05	40°24'44.830"N	104°49'43.575"W	0.00	
2904.00†	18.927	200.673	2797.26	359.14	-647.98	-244.50	40°24'44.530"N	104°49'43.723"W	0.00	
3004.00†	18.927	200.673	2891.85	375.96	-678.33	-255.96	40°24'44.230"N	104°49'43.871"W	0.00	
3104.00†	18.927	200.673	2986.44	392.78	-708.67	-267.41	40°24'43.930"N	104°49'44.019"W	0.00	
3204.00†	18.927	200.673	3081.04	409.60	-739.02	-278.86	40°24'43.630"N	104°49'44.167"W	0.00	
3304.00†	18.927	200.673	3175.63	426.42	-769.37	-290.31	40°24'43.330"N	104°49'44.315"W	0.00	
3404.00†	18.927	200.673	3270.22	443.24	-799.72	-301.76	40°24'43.030"N	104°49'44.463"W	0.00	
3504.00†	18.927	200.673	3364.82	460.06	-830.07	-313.21	40°24'42.730"N	104°49'44.612"W	0.00	
3604.00†	18.927	200.673	3459.41	476.88	-860.41	-324.66	40°24'42.431"N	104°49'44.760"W	0.00	
3704.00†	18.927	200.673	3554.00	493.70	-890.76	-336.12	40°24'42.131"N	104°49'44.908"W	0.00	
3804.00†	18.927	200.673	3648.60	510.52	-921.11	-347.57	40°24'41.831"N	104°49'45.056"W	0.00	
3904.00†	18.927	200.673	3743.19	527.34	-951.46	-359.02	40°24'41.531"N	104°49'45.204"W	0.00	
4004.00†	18.927	200.673	3837.78	544.17	-981.80	-370.47	40°24'41.231"N	104°49'45.352"W	0.00	
4104.00†	18.927	200.673	3932.38	560.99	-1012.15	-381.92	40°24'40.931"N	104°49'45.500"W	0.00	
4204.00†	18.927	200.673	4026.97	577.81	-1042.50	-393.37	40°24'40.631"N	104°49'45.648"W	0.00	
4304.00†	18.927	200.673	4121.56	594.63	-1072.85	-404.82	40°24'40.331"N	104°49'45.796"W	0.00	
4404.00†	18.927	200.673	4216.16	611.45	-1103.20	-416.27	40°24'40.031"N	104°49'45.944"W	0.00	
4504.00†	18.927	200.673	4310.75	628.27	-1133.54	-427.73	40°24'39.732"N	104°49'46.092"W	0.00	
4604.00†	18.927	200.673	4405.34	645.09	-1163.89	-439.18	40°24'39.432"N	104°49'46.240"W	0.00	
4704.00†	18.927	200.673	4499.93	661.91	-1194.24	-450.63	40°24'39.132"N	104°49'46.388"W	0.00	
4804.00†	18.927	200.673	4594.53	678.73	-1224.59	-462.08	40°24'38.832"N	104°49'46.536"W	0.00	
4904.00†	18.927	200.673	4689.12	695.55	-1254.93	-473.53	40°24'38.532"N	104°49'46.684"W	0.00	
5004.00†	18.927	200.673	4783.71	712.37	-1285.28	-484.98	40°24'38.232"N	104°49'46.832"W	0.00	
5104.00†	18.927	200.673	4878.31	729.19	-1315.63	-496.43	40°24'37.932"N	104°49'46.980"W	0.00	
5204.00†	18.927	200.673	4972.90	746.01	-1345.98	-507.88	40°24'37.632"N	104°49'47.128"W	0.00	
5304.00†	18.927	200.673	5067.49	762.83	-1376.33	-519.34	40°24'37.332"N	104°49'47.276"W	0.00	
5404.00†	18.927	200.673	5162.09	779.65	-1406.67	-530.79	40°24'37.033"N	104°49'47.424"W	0.00	
5504.00†	18.927	200.673	5256.68	796.47	-1437.02	-542.24	40°24'36.733"N	104°49'47.572"W	0.00	
5604.00†	18.927	200.673	5351.27	813.29	-1467.37	-553.69	40°24'36.433"N	104°49'47.720"W	0.00	



Planned Wellpath Report

BOST FARM 13C-11-L (REV-C.0) PWP

Page 4 of 10



REFERENCE WELLPATH IDENTIFICATION

Operator	SRC ENERGY	Slot	SLOT#10 BOST FARM 13C-11-L (2666'FSL & 1234'FWL, SEC.07)
Area	COLORADO	Well	BOST FARM 13C-11-L
Field	WELD COUNTY (NAD83,TRUE NORTH)	Wellbore	BOST FARM 13C-11-L PWB
Facility	SEC.07-T05N-R66W		

WELLPATH DATA (190 stations) † = interpolated/extrapolated station

MD [ft]	Inclination [°]	Azimuth [°]	TVD [ft]	Vert Sect [ft]	North [ft]	East [ft]	Latitude	Longitude	DLS [°/100ft]	Comments
5704.00†	18.927	200.673	5445.87	830.11	-1497.72	-565.14	40°24'36.133"N	104°49'47.868"W	0.00	
5804.00†	18.927	200.673	5540.46	846.93	-1528.06	-576.59	40°24'35.833"N	104°49'48.016"W	0.00	
5904.00†	18.927	200.673	5635.05	863.75	-1558.41	-588.04	40°24'35.533"N	104°49'48.164"W	0.00	
6004.00†	18.927	200.673	5729.65	880.57	-1588.76	-599.49	40°24'35.233"N	104°49'48.312"W	0.00	
6104.00†	18.927	200.673	5824.24	897.39	-1619.11	-610.95	40°24'34.933"N	104°49'48.460"W	0.00	
6204.00†	18.927	200.673	5918.83	914.21	-1649.46	-622.40	40°24'34.633"N	104°49'48.608"W	0.00	
6304.00†	18.927	200.673	6013.43	931.03	-1679.80	-633.85	40°24'34.334"N	104°49'48.756"W	0.00	
6404.00†	18.927	200.673	6108.02	947.85	-1710.15	-645.30	40°24'34.034"N	104°49'48.904"W	0.00	
6504.00†	18.927	200.673	6202.61	964.67	-1740.50	-656.75	40°24'33.734"N	104°49'49.052"W	0.00	
6604.00†	18.927	200.673	6297.21	981.49	-1770.85	-668.20	40°24'33.434"N	104°49'49.200"W	0.00	
6704.00†	18.927	200.673	6391.80	998.31	-1801.20	-679.65	40°24'33.134"N	104°49'49.348"W	0.00	
6804.00†	18.927	200.673	6486.39	1015.13	-1831.54	-691.11	40°24'32.834"N	104°49'49.496"W	0.00	
6904.00†	18.927	200.673	6580.99	1031.95	-1861.89	-702.56	40°24'32.534"N	104°49'49.644"W	0.00	
7004.00†	18.927	200.673	6675.58	1048.77	-1892.24	-714.01	40°24'32.234"N	104°49'49.792"W	0.00	
7078.87	18.927	200.673	6746.40	1061.37	-1914.96	-722.58	40°24'32.010"N	104°49'49.903"W	0.00	End of Tangent
7104.00†	19.832	206.924	6770.11	1066.07	-1922.57	-725.95	40°24'31.935"N	104°49'49.947"W	9.00	
7204.00†	25.117	226.184	6862.61	1094.20	-1952.45	-748.99	40°24'31.639"N	104°49'50.245"W	9.00	
7304.00†	32.017	238.369	6950.45	1136.78	-1981.11	-786.96	40°24'31.356"N	104°49'50.735"W	9.00	
7404.00†	39.694	246.433	7031.49	1192.74	-2007.83	-838.90	40°24'31.092"N	104°49'51.407"W	9.00	
7504.00†	47.771	252.198	7103.72	1260.73	-2031.97	-903.56	40°24'30.853"N	104°49'52.243"W	9.00	
7604.00†	56.070	256.632	7165.36	1339.05	-2052.93	-979.33	40°24'30.646"N	104°49'53.222"W	9.00	
7704.00†	64.500	260.268	7214.89	1425.79	-2070.18	-1064.34	40°24'30.476"N	104°49'54.321"W	9.00	
7804.00†	73.008	263.423	7251.10	1518.81	-2083.31	-1156.52	40°24'30.346"N	104°49'55.513"W	9.00	
7904.00†	81.560	266.301	7273.10	1615.81	-2092.00	-1253.57	40°24'30.260"N	104°49'56.767"W	9.00	
8004.00†	90.132	269.053	7280.34	1714.42	-2096.02	-1353.13	40°24'30.220"N	104°49'58.054"W	9.00	
8023.79	91.829	269.594	7280.00†	1733.91	-2096.26	-1372.91	40°24'30.218"N	104°49'58.310"W	9.00	End of 3D Arc
8104.00†	91.814	269.595	7277.45	1812.82	-2096.83	-1453.08	40°24'30.212"N	104°49'59.346"W	0.02	
8204.00†	91.796	269.595	7274.30	1911.21	-2097.53	-1553.03	40°24'30.205"N	104°50'00.638"W	0.02	
8304.00†	91.778	269.595	7271.18	2009.59	-2098.24	-1652.98	40°24'30.198"N	104°50'01.930"W	0.02	
8404.00†	91.760	269.595	7268.09	2107.98	-2098.95	-1752.93	40°24'30.191"N	104°50'03.222"W	0.02	



Planned Wellpath Report

BOST FARM 13C-11-L (REV-C.0) PWP

Page 5 of 10



REFERENCE WELLPATH IDENTIFICATION

Operator	SRC ENERGY	Slot	SLOT#10 BOST FARM 13C-11-L (2666'FSL & 1234'FWL, SEC.07)
Area	COLORADO	Well	BOST FARM 13C-11-L
Field	WELD COUNTY (NAD83,TRUE NORTH)	Wellbore	BOST FARM 13C-11-L PWB
Facility	SEC.07-T05N-R66W		

WELLPATH DATA (190 stations) † = interpolated/extrapolated station

MD [ft]	Inclination [°]	Azimuth [°]	TVD [ft]	Vert Sect [ft]	North [ft]	East [ft]	Latitude	Longitude	DLS [°/100ft]	Comments
8504.00†	91.742	269.595	7265.04	2206.37	-2099.65	-1852.88	40°24'30.184"N	104°50'04.515"W	0.02	
8604.00†	91.724	269.595	7262.01	2304.75	-2100.36	-1952.83	40°24'30.177"N	104°50'05.807"W	0.02	
8704.00†	91.706	269.595	7259.02	2403.14	-2101.06	-2052.78	40°24'30.170"N	104°50'07.099"W	0.02	
8804.00†	91.688	269.596	7256.06	2501.53	-2101.77	-2152.74	40°24'30.163"N	104°50'08.391"W	0.02	
8904.00†	91.670	269.596	7253.13	2599.92	-2102.48	-2252.69	40°24'30.156"N	104°50'09.683"W	0.02	
9004.00†	91.652	269.596	7250.23	2698.31	-2103.18	-2352.65	40°24'30.149"N	104°50'10.975"W	0.02	
9104.00†	91.634	269.596	7247.36	2796.70	-2103.89	-2452.60	40°24'30.142"N	104°50'12.267"W	0.02	
9204.00†	91.616	269.596	7244.53	2895.10	-2104.59	-2552.56	40°24'30.135"N	104°50'13.559"W	0.02	
9304.00†	91.598	269.596	7241.72	2993.49	-2105.29	-2652.52	40°24'30.128"N	104°50'14.851"W	0.02	
9404.00†	91.580	269.596	7238.95	3091.88	-2106.00	-2752.48	40°24'30.121"N	104°50'16.144"W	0.02	
9504.00†	91.562	269.597	7236.21	3190.28	-2106.70	-2852.44	40°24'30.114"N	104°50'17.436"W	0.02	
9604.00†	91.544	269.597	7233.50	3288.68	-2107.41	-2952.40	40°24'30.106"N	104°50'18.728"W	0.02	
9704.00†	91.526	269.597	7230.82	3387.07	-2108.11	-3052.36	40°24'30.099"N	104°50'20.020"W	0.02	
9804.00†	91.508	269.597	7228.17	3485.47	-2108.81	-3152.32	40°24'30.092"N	104°50'21.312"W	0.02	
9904.00†	91.490	269.597	7225.56	3583.87	-2109.52	-3252.28	40°24'30.085"N	104°50'22.605"W	0.02	
10004.00†	91.472	269.597	7222.97	3682.27	-2110.22	-3352.25	40°24'30.078"N	104°50'23.897"W	0.02	
10104.00†	91.454	269.597	7220.42	3780.67	-2110.92	-3452.21	40°24'30.071"N	104°50'25.189"W	0.02	
10204.00†	91.436	269.598	7217.90	3879.07	-2111.62	-3552.18	40°24'30.064"N	104°50'26.481"W	0.02	
10304.00†	91.418	269.598	7215.41	3977.47	-2112.32	-3652.15	40°24'30.057"N	104°50'27.774"W	0.02	
10404.00†	91.400	269.598	7212.95	4075.87	-2113.03	-3752.11	40°24'30.050"N	104°50'29.066"W	0.02	
10504.00†	91.382	269.598	7210.52	4174.27	-2113.73	-3852.08	40°24'30.043"N	104°50'30.358"W	0.02	
10604.00†	91.364	269.598	7208.13	4272.68	-2114.43	-3952.05	40°24'30.036"N	104°50'31.650"W	0.02	
10704.00†	91.346	269.598	7205.76	4371.08	-2115.13	-4052.02	40°24'30.029"N	104°50'32.943"W	0.02	
10804.00†	91.328	269.599	7203.43	4469.49	-2115.83	-4151.99	40°24'30.022"N	104°50'34.235"W	0.02	
10904.00†	91.310	269.599	7201.13	4567.89	-2116.53	-4251.96	40°24'30.014"N	104°50'35.527"W	0.02	
11004.00†	91.292	269.599	7198.86	4666.30	-2117.23	-4351.93	40°24'30.007"N	104°50'36.820"W	0.02	
11104.00†	91.274	269.599	7196.62	4764.70	-2117.93	-4451.91	40°24'30.000"N	104°50'38.112"W	0.02	
11204.00†	91.256	269.599	7194.41	4863.11	-2118.63	-4551.88	40°24'29.993"N	104°50'39.404"W	0.02	
11304.00†	91.238	269.599	7192.23	4961.52	-2119.33	-4651.85	40°24'29.986"N	104°50'40.697"W	0.02	
11404.00†	91.220	269.599	7190.09	5059.93	-2120.03	-4751.83	40°24'29.979"N	104°50'41.989"W	0.02	



Planned Wellpath Report

BOST FARM 13C-11-L (REV-C.0) PWP

Page 6 of 10



REFERENCE WELLPATH IDENTIFICATION

Operator	SRC ENERGY	Slot	SLOT#10 BOST FARM 13C-11-L (2666'FSL & 1234'FWL, SEC.07)
Area	COLORADO	Well	BOST FARM 13C-11-L
Field	WELD COUNTY (NAD83,TRUE NORTH)	Wellbore	BOST FARM 13C-11-L PWB
Facility	SEC.07-T05N-R66W		

WELLPATH DATA (190 stations) † = interpolated/extrapolated station

MD [ft]	Inclination [°]	Azimuth [°]	TVD [ft]	Vert Sect [ft]	North [ft]	East [ft]	Latitude	Longitude	DLS [°/100ft]	Comments
11504.00†	91.202	269.600	7187.98	5158.34	-2120.73	-4851.80	40°24'29.972"N	104°50'43.281"W	0.02	
11604.00†	91.184	269.600	7185.90	5256.75	-2121.43	-4951.78	40°24'29.965"N	104°50'44.574"W	0.02	
11704.00†	91.166	269.600	7183.85	5355.16	-2122.12	-5051.75	40°24'29.958"N	104°50'45.866"W	0.02	
11804.00†	91.148	269.600	7181.83	5453.57	-2122.82	-5151.73	40°24'29.951"N	104°50'47.159"W	0.02	
11904.00†	91.130	269.600	7179.84	5551.98	-2123.52	-5251.71	40°24'29.943"N	104°50'48.451"W	0.02	
12004.00†	91.112	269.600	7177.88	5650.39	-2124.22	-5351.69	40°24'29.936"N	104°50'49.743"W	0.02	
12104.00†	91.094	269.600	7175.96	5748.81	-2124.92	-5451.67	40°24'29.929"N	104°50'51.036"W	0.02	
12204.00†	91.076	269.601	7174.07	5847.22	-2125.61	-5551.65	40°24'29.922"N	104°50'52.328"W	0.02	
12304.00†	91.058	269.601	7172.20	5945.63	-2126.31	-5651.63	40°24'29.915"N	104°50'53.621"W	0.02	
12404.00†	91.040	269.601	7170.37	6044.05	-2127.01	-5751.61	40°24'29.908"N	104°50'54.913"W	0.02	
12504.00†	91.022	269.601	7168.58	6142.46	-2127.70	-5851.59	40°24'29.901"N	104°50'56.206"W	0.02	
12604.00†	91.004	269.601	7166.81	6240.88	-2128.40	-5951.57	40°24'29.894"N	104°50'57.498"W	0.02	
12704.00†	90.986	269.601	7165.07	6339.29	-2129.10	-6051.55	40°24'29.887"N	104°50'58.791"W	0.02	
12804.00†	90.968	269.601	7163.37	6437.71	-2129.79	-6151.54	40°24'29.879"N	104°51'00.083"W	0.02	
12904.00†	90.950	269.602	7161.69	6536.13	-2130.49	-6251.52	40°24'29.872"N	104°51'01.376"W	0.02	
13004.00†	90.932	269.602	7160.05	6634.54	-2131.18	-6351.50	40°24'29.865"N	104°51'02.668"W	0.02	
13104.00†	90.914	269.602	7158.44	6732.96	-2131.88	-6451.49	40°24'29.858"N	104°51'03.961"W	0.02	
13204.00†	90.896	269.602	7156.86	6831.38	-2132.57	-6551.47	40°24'29.851"N	104°51'05.253"W	0.02	
13304.00†	90.878	269.602	7155.32	6929.80	-2133.27	-6651.46	40°24'29.844"N	104°51'06.546"W	0.02	
13404.00†	90.860	269.602	7153.80	7028.22	-2133.96	-6751.45	40°24'29.837"N	104°51'07.838"W	0.02	
13504.00†	90.842	269.602	7152.32	7126.64	-2134.65	-6851.43	40°24'29.830"N	104°51'09.131"W	0.02	
13604.00†	90.824	269.603	7150.86	7225.06	-2135.35	-6951.42	40°24'29.822"N	104°51'10.423"W	0.02	
13704.00†	90.806	269.603	7149.44	7323.48	-2136.04	-7051.41	40°24'29.815"N	104°51'11.716"W	0.02	
13804.00†	90.788	269.603	7148.05	7421.90	-2136.73	-7151.39	40°24'29.808"N	104°51'13.008"W	0.02	
13904.00†	90.770	269.603	7146.69	7520.32	-2137.43	-7251.38	40°24'29.801"N	104°51'14.301"W	0.02	
14004.00†	90.752	269.603	7145.37	7618.74	-2138.12	-7351.37	40°24'29.794"N	104°51'15.593"W	0.02	
14104.00†	90.734	269.603	7144.07	7717.16	-2138.81	-7451.36	40°24'29.787"N	104°51'16.886"W	0.02	
14204.00†	90.715	269.603	7142.80	7815.59	-2139.50	-7551.35	40°24'29.780"N	104°51'18.178"W	0.02	
14304.00†	90.697	269.604	7141.57	7914.01	-2140.20	-7651.34	40°24'29.772"N	104°51'19.471"W	0.02	
14404.00†	90.679	269.604	7140.37	8012.43	-2140.89	-7751.33	40°24'29.765"N	104°51'20.764"W	0.02	



Planned Wellpath Report

BOST FARM 13C-11-L (REV-C.0) PWP

Page 7 of 10



REFERENCE WELLPATH IDENTIFICATION

Operator	SRC ENERGY	Slot	SLOT#10 BOST FARM 13C-11-L (2666'FSL & 1234'FWL, SEC.07)
Area	COLORADO	Well	BOST FARM 13C-11-L
Field	WELD COUNTY (NAD83,TRUE NORTH)	Wellbore	BOST FARM 13C-11-L PWB
Facility	SEC.07-T05N-R66W		

WELLPATH DATA (190 stations) † = interpolated/extrapolated station

MD [ft]	Inclination [°]	Azimuth [°]	TVD [ft]	Vert Sect [ft]	North [ft]	East [ft]	Latitude	Longitude	DLS [°/100ft]	Comments
14504.00†	90.661	269.604	7139.20	8110.85	-2141.58	-7851.32	40°24'29.758"N	104°51'22.056"W	0.02	
14604.00†	90.643	269.604	7138.06	8209.28	-2142.27	-7951.31	40°24'29.751"N	104°51'23.349"W	0.02	
14704.00†	90.625	269.604	7136.95	8307.70	-2142.96	-8051.30	40°24'29.744"N	104°51'24.641"W	0.02	
14804.00†	90.607	269.604	7135.88	8406.13	-2143.65	-8151.30	40°24'29.737"N	104°51'25.934"W	0.02	
14904.00†	90.589	269.605	7134.83	8504.55	-2144.34	-8251.29	40°24'29.730"N	104°51'27.226"W	0.02	
15004.00†	90.571	269.605	7133.82	8602.97	-2145.03	-8351.28	40°24'29.722"N	104°51'28.519"W	0.02	
15104.00†	90.553	269.605	7132.84	8701.40	-2145.72	-8451.27	40°24'29.715"N	104°51'29.812"W	0.02	
15204.00†	90.535	269.605	7131.89	8799.82	-2146.41	-8551.27	40°24'29.708"N	104°51'31.104"W	0.02	
15304.00†	90.517	269.605	7130.97	8898.25	-2147.10	-8651.26	40°24'29.701"N	104°51'32.397"W	0.02	
15404.00†	90.499	269.605	7130.08	8996.68	-2147.79	-8751.25	40°24'29.694"N	104°51'33.689"W	0.02	
15504.00†	90.481	269.605	7129.23	9095.10	-2148.48	-8851.25	40°24'29.687"N	104°51'34.982"W	0.02	
15604.00†	90.463	269.606	7128.40	9193.53	-2149.17	-8951.24	40°24'29.680"N	104°51'36.275"W	0.02	
15704.00†	90.445	269.606	7127.61	9291.95	-2149.85	-9051.24	40°24'29.672"N	104°51'37.567"W	0.02	
15804.00†	90.427	269.606	7126.85	9390.38	-2150.54	-9151.23	40°24'29.665"N	104°51'38.860"W	0.02	
15904.00†	90.409	269.606	7126.12	9488.81	-2151.23	-9251.23	40°24'29.658"N	104°51'40.153"W	0.02	
16004.00†	90.391	269.606	7125.42	9587.23	-2151.92	-9351.22	40°24'29.651"N	104°51'41.445"W	0.02	
16104.00†	90.373	269.606	7124.75	9685.66	-2152.61	-9451.22	40°24'29.644"N	104°51'42.738"W	0.02	
16204.00†	90.355	269.606	7124.12	9784.09	-2153.29	-9551.21	40°24'29.637"N	104°51'44.030"W	0.02	
16304.00†	90.337	269.607	7123.51	9882.52	-2153.98	-9651.21	40°24'29.629"N	104°51'45.323"W	0.02	
16404.00†	90.319	269.607	7122.94	9980.94	-2154.67	-9751.20	40°24'29.622"N	104°51'46.616"W	0.02	
16504.00†	90.301	269.607	7122.40	10079.37	-2155.35	-9851.20	40°24'29.615"N	104°51'47.908"W	0.02	
16604.00†	90.283	269.607	7121.89	10177.80	-2156.04	-9951.20	40°24'29.608"N	104°51'49.201"W	0.02	
16704.00†	90.265	269.607	7121.41	10276.23	-2156.72	-10051.19	40°24'29.601"N	104°51'50.494"W	0.02	
16804.00†	90.247	269.607	7120.96	10374.65	-2157.41	-10151.19	40°24'29.593"N	104°51'51.786"W	0.02	
16904.00†	90.229	269.607	7120.55	10473.08	-2158.09	-10251.19	40°24'29.586"N	104°51'53.079"W	0.02	
17004.00†	90.211	269.608	7120.16	10571.51	-2158.78	-10351.18	40°24'29.579"N	104°51'54.372"W	0.02	
17104.00†	90.193	269.608	7119.81	10669.94	-2159.46	-10451.18	40°24'29.572"N	104°51'55.664"W	0.02	
17204.00†	90.175	269.608	7119.49	10768.37	-2160.15	-10551.18	40°24'29.565"N	104°51'56.957"W	0.02	
17304.00†	90.157	269.608	7119.20	10866.79	-2160.83	-10651.18	40°24'29.558"N	104°51'58.250"W	0.02	
17404.00†	90.139	269.608	7118.94	10965.22	-2161.52	-10751.17	40°24'29.550"N	104°51'59.542"W	0.02	



Planned Wellpath Report

BOST FARM 13C-11-L (REV-C.0) PWP

Page 8 of 10



REFERENCE WELLPATH IDENTIFICATION

Operator	SRC ENERGY	Slot	SLOT#10 BOST FARM 13C-11-L (2666'FSL & 1234'FWL, SEC.07)
Area	COLORADO	Well	BOST FARM 13C-11-L
Field	WELD COUNTY (NAD83,TRUE NORTH)	Wellbore	BOST FARM 13C-11-L PWB
Facility	SEC.07-T05N-R66W		

WELLPATH DATA (190 stations) † = interpolated/extrapolated station

MD [ft]	Inclination [°]	Azimuth [°]	TVD [ft]	Vert Sect [ft]	North [ft]	East [ft]	Latitude	Longitude	DLS [°/100ft]	Comments
17504.00†	90.121	269.608	7118.71	11063.65	-2162.20	-10851.17	40°24'29.543"N	104°52'00.835"W	0.02	
17604.00†	90.103	269.608	7118.52	11162.08	-2162.88	-10951.17	40°24'29.536"N	104°52'02.128"W	0.02	
17704.00†	90.085	269.609	7118.35	11260.51	-2163.57	-11051.16	40°24'29.529"N	104°52'03.420"W	0.02	
17804.00†	90.067	269.609	7118.22	11358.94	-2164.25	-11151.16	40°24'29.522"N	104°52'04.713"W	0.02	
17904.00†	90.049	269.609	7118.12	11457.36	-2164.93	-11251.16	40°24'29.514"N	104°52'06.006"W	0.02	
18004.00†	90.031	269.609	7118.05	11555.79	-2165.62	-11351.16	40°24'29.507"N	104°52'07.298"W	0.02	
18104.00†	90.013	269.609	7118.01	11654.22	-2166.30	-11451.16	40°24'29.500"N	104°52'08.591"W	0.02	
18176.69	90.000	269.609	7118.00 ²	11725.76	-2166.79	-11523.84	40°24'29.495"N	104°52'09.530"W	0.02	End of 3D Arc
18204.00†	90.000	269.609	7118.00	11752.65	-2166.98	-11551.15	40°24'29.493"N	104°52'09.883"W	0.00	
18276.67	90.000	269.609	7118.00 ³	11824.17	-2167.48	-11623.82	40°24'29.488"N	104°52'10.823"W	0.00	End of Tangent

HOLE & CASING SECTIONS - Ref Wellbore: BOST FARM 13C-11-L PWB Ref Wellpath: BOST FARM 13C-11-L (REV-C.0) PWP

String/Diameter	Start MD [ft]	End MD [ft]	Interval [ft]	Start TVD [ft]	End TVD [ft]	Start N/S [ft]	Start E/W [ft]	End N/S [ft]	End E/W [ft]
13.5in Open Hole	4.00	1750.00	1746.00	4.00	1705.65	0.00	0.00	-297.76	-112.36
9.625in Casing Surface	4.00	1750.00	1746.00	4.00	1705.65	0.00	0.00	-297.76	-112.36
8.5in Open Hole	1750.00	18276.67	16526.67	1705.65	7118.00	-297.76	-112.36	-2167.48	-11623.82



Planned Wellpath Report

BOST FARM 13C-11-L (REV-C.0) PWP

Page 9 of 10



REFERENCE WELLPATH IDENTIFICATION

Operator	SRC ENERGY	Slot	SLOT#10 BOST FARM 13C-11-L (2666'FSL & 1234'FWL, SEC.07)
Area	COLORADO	Well	BOST FARM 13C-11-L
Field	WELD COUNTY (NAD83,TRUE NORTH)	Wellbore	BOST FARM 13C-11-L PWB
Facility	SEC.07-T05N-R66W		

TARGETS

Name	MD [ft]	TVD [ft]	North [ft]	East [ft]	Grid East [US ft]	Grid North [US ft]	Latitude	Longitude	Shape
SEC.07-T05N-R66W		1.00	-114.03	24.24	3187161.59	1394309.79	40°24'49.806"N	104°49'40.249"W	polygon
SEC.11-T05N-R67W		1.00	-114.03	24.24	3187161.59	1394309.79	40°24'49.806"N	104°49'40.249"W	polygon
SEC.12-T05N-R67W		1.00	-114.03	24.24	3187161.59	1394309.79	40°24'49.806"N	104°49'40.249"W	polygon
BOST FARM 13C-11-L BHL ON PLAT (502'FSL & 460'FWL, SEC.11)		7111.00	-2165.43	-11313.86	3175839.83	1392172.60	40°24'29.509"N	104°52'06.816"W	point
BOST FARM 13C-11-L BPZ ON PLAT (500'FSL & 360'FWL, SEC.11)		7111.00	-2164.75	-11213.88	3175939.79	1392174.04	40°24'29.516"N	104°52'05.524"W	point
BOST FARM 13C-11-L BHL REV-1 (502'FSL & 460'FWL, SEC.11)		7118.00	-2165.45	-11313.86	3175839.83	1392172.58	40°24'29.509"N	104°52'06.816"W	point
3) BOST FARM 13C-11-L BHL REV-2 (494'FSL & 50'FWL, SEC.11)	18276.67	7118.00	-2167.48	-11623.82	3175529.91	1392168.21	40°24'29.488"N	104°52'10.823"W	point
BOST FARM 13C-11-L BPZ REV-1 (500'FSL & 360'FWL, SEC.11)		7118.00	-2164.79	-11213.91	3175939.76	1392174.00	40°24'29.516"N	104°52'05.524"W	point
2) BOST FARM 13C-11-L BPZ REV-2 (496'FSL & 150'FWL, SEC.11)	18176.69	7118.00	-2166.79	-11523.84	3175629.87	1392169.65	40°24'29.495"N	104°52'09.530"W	point
1) BOST FARM 13C-11-L TOP OF PROD REV-1 (563'FSL & 150'FEL, SEC.12)	8023.79	7280.00	-2096.26	-1372.91	3185779.56	1392317.11	40°24'30.218"N	104°49'58.310"W	point
BOST FARM 13C-11-L TOP OF PROD ON PLAT (563'FSL & 150'FEL, SEC.12)		7352.00	-2096.22	-1372.94	3185779.53	1392317.15	40°24'30.218"N	104°49'58.310"W	point



Planned Wellpath Report

BOST FARM 13C-11-L (REV-C.0) PWP

Page 10 of 10



REFERENCE WELLPATH IDENTIFICATION

Operator	SRC ENERGY	Slot	SLOT#10 BOST FARM 13C-11-L (2666'FSL & 1234'FWL, SEC.07)
Area	COLORADO	Well	BOST FARM 13C-11-L
Field	WELD COUNTY (NAD83,TRUE NORTH)	Wellbore	BOST FARM 13C-11-L PWB
Facility	SEC.07-T05N-R66W		

SURVEY PROGRAM - Ref Wellbore: BOST FARM 13C-11-L PWB Ref Wellpath: BOST FARM 13C-11-L (REV-C.0) PWP

Start MD [ft]	End MD [ft]	Positional Uncertainty Model	Log Name/Comment	Wellbore
4.00	1750.00	BHI NaviTrak (Axial)		BOST FARM 13C-11-L PWB
1750.00	18276.67	BHI AutoTrak Curve (MagCAD+IFR1, Short spacing)		BOST FARM 13C-11-L PWB