

SRC ENERGY

Location: COLORADO Slot: SLOT#03 BOST FARM 12N-11C-L (2666'FSL & 1094'FWL, SEC.07)
Field: WELD COUNTY (NAD83,TRUE NORTH) Well: BOST FARM 12N-11C-L
Facility: SEC.07-T05N-R66W Wellbore: BOST FARM 12N-11C-L PWB

Plot reference wellpath is BOST FARM 12N-11C-L (REV-C.0) PWP	Grid System: NAD83 / Lambert Colorado SP, Northern Zone (501), US feet
True vertical depths are referenced to IKON 12 (4) (RKB)	North Reference: True north
Measured depths are referenced to IKON 12 (4) (RKB)	Scale: True distance
IKON 12 (4) (RKB) to Mean Sea Level: 4880 feet	Depths are in feet
Mean Sea Level to Mud line (At Slot: SLOT#03 BOST FARM 12N-11C-L (2666'FSL & 1094'FWL, SEC.07)): 0 feet	Created by: haribasi on 2019-01-03
Coordinates are in feet referenced to Slot	Database: WA DENVER

Location Information

Facility Name			Grid East (US ft)	Grid North (US ft)	Latitude	Longitude
SEC.07-T05N-R66W			3187161.591	1394309.789	40°24'49.806"N	104°49'40.249"W
Slot	Local N (ft)	Local E (ft)	Grid East (US ft)	Grid North (US ft)	Latitude	Longitude
SLOT#03 BOST FARM 12N-11C-L (2666'FSL & 1094'FWL, SEC.07)	115.12	-164.31	3186996.421	1394423.659	40°24'50.944"N	104°49'42.373"W
IKON 12 (4) (RKB) to Mud line (At Slot: SLOT#03 BOST FARM 12N-11C-L (2666'FSL & 1094'FWL, SEC.07))					4880R	
Mean Sea Level to Mud line (At Slot: SLOT#03 BOST FARM 12N-11C-L (2666'FSL & 1094'FWL, SEC.07))					0ft	
IKON 12 (4) (RKB) to Mean Sea Level					4880R	

Survey Program

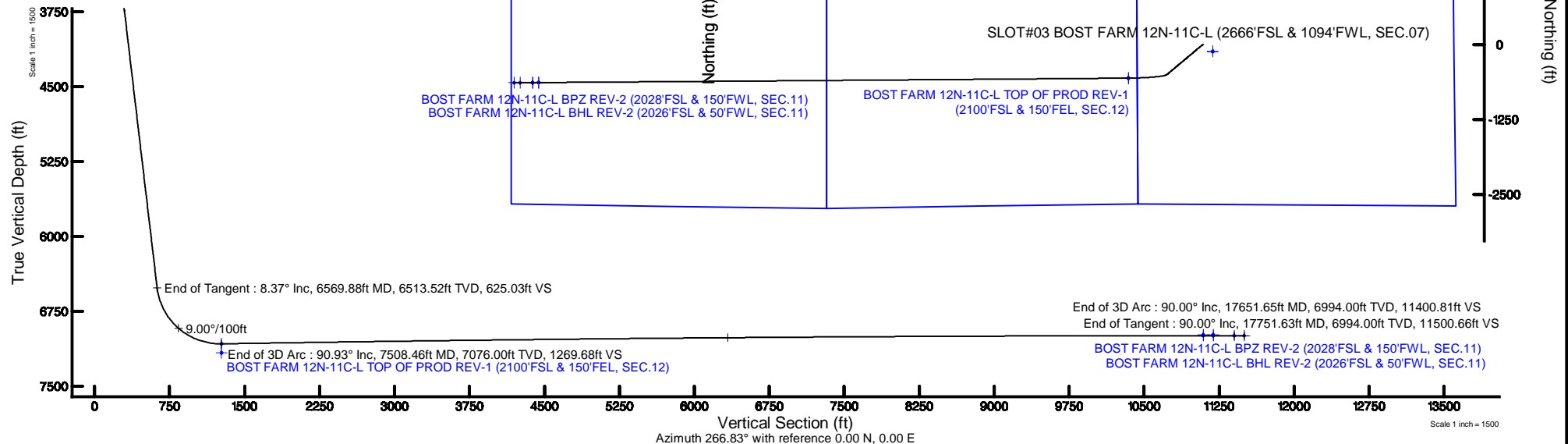
Start MD (ft)	End MD (ft)	Tool	Model	Log Name/Comment	Wellbore
4.00	1750.00	BHI NavTrak	BHI NavTrak (Axial)		BOST FARM 12N-11C-L PWB
1750.00	17751.63	BHI AutoTrak Curve	BHI AutoTrak Curve (MagCAD+IFR1, Short spacing)		BOST FARM 12N-11C-L PWB



SRC ENERGY



N
TRUE
W E
BGM (1900.0 to 2019.0) Dip: 66.80° Field: 5262 nT
Magnetic North is 8.31 degrees East of True North (at 10/1/2018)
To correct azimuth from Magnetic to True add 8.31 degrees



BOST FARM 12N-11C-L (REV-C.0) LAS.las

~VERSION INFORMATION

VERS. 2.0 : CWLS LOG ASCII STANDARD-VERSION 2.0

WRAP. NO : ASCII DATA SECTION CONTAINS ONE ROW PER WELLPATH STATION

~WELL INFORMATION

#MNEM	.UNITS	DATA	:DESCRIPTION
#----	.-----	----	:-----
STRT	.ft	0.00	:START MD
STOP	.ft	17751.63	:STOP MD
STEP	.ft	0.0	:STEP (non-uniform increment)
NULL	.	-999.99	:NULL
COMP	.	SRC ENERGY	:OPERATOR
WELL	.	BOST FARM 12N-11C-L	:WELL
FLD	.	WELD COUNTY (NAD83,TRUE NORTH)	:FIELD
LOC	.	COLORADO	:AREA (aka: Location)
CNTY	.	N/A	:COUNTY
STAT	.	N/A	:STATE
CTRY	.	N/A	:COUNTRY
SRVC	.	Baker Hughes	:CONTRACTOR
DATE	.	09/24/2018	:LOG REV DATE
API	.		:API NUMBER

~OTHER INFORMATION

#Software: WellArchitect(R) Version 5.1

#MNEM	.UNITS	DATA	:DESCRIPTION
#----	.-----	----	:-----
WPTYPE	.	PLANNED WELLPATH	:WELLPATH TYPE
FACILITY	.	SEC.07-T05N-R66W	:FACILITY
SLOT	.	SLOT#03 BOST FARM 12N-11C-L (2666'FSL & 1094'FWL, SEC.07):SLOT	:SLOT
WELLBORE	.	BOST FARM 12N-11C-L PWB	:WELLBORE
WELLPATH	.	BOST FARM 12N-11C-L (REV-C.0) PWP	:WELLPATH
MDREFPT	.	IKON 12 (4') (RKB)	:MD REFERENCE POINT
TVDREFPT	.	IKON 12 (4') (RKB)	:TVD REFERENCE POINT
LCLREFPT	.	Slot	:LOCAL COORDINATE REFERENCE PT

BOST FARM 12N-11C-L (REV-C.0) LAS.las

VSAZIMUTH.deg	266.83	:VERTICAL SECTION AZIMUTH
VSORIGN .ft	0.00	:VERTICAL SECTION ORIGIN NORTH
VSORIGE .ft	0.00	:VERTICAL SECTION ORIGIN EAST

~CURVE (WELLPATH) INFORMATION

#MNEM	.UNITS	:DESCRIPTION
#----	.-----	:-----
DEPT	.ft	:MEASURED DEPTH
INC	.deg	:INCLINATION
AZI	.deg	:AZIMUTH
TVD	.ft	:TRUE VERTICAL DEPTH
SECT	.ft	:CROSS SECTION (CURTAIN/VERTICAL)
LOCALN	.ft	:LOCAL NORTH
LOCALE	.ft	:LOCAL EAST
LAT	.deg	:LATITUDE
LONG	.deg	:LONGITUDE
DLS	.deg/100ft	:DOGLEG SEVERITY

~ASCII DATA

0.00	0.00	230.05	0.00	0.00	0.00	0.00	40.4141510	-104.8284370	0.00
4.00	0.00	230.05	4.00	0.00	0.00	0.00	40.4141510	-104.8284370	0.00
104.00	0.00	230.05	104.00	0.00	0.00	0.00	40.4141510	-104.8284370	0.00
204.00	0.00	230.05	204.00	0.00	0.00	0.00	40.4141510	-104.8284370	0.00
304.00	0.00	230.05	304.00	0.00	0.00	0.00	40.4141510	-104.8284370	0.00
404.00	0.00	230.05	404.00	0.00	0.00	0.00	40.4141510	-104.8284370	0.00
504.00	0.00	230.05	504.00	0.00	0.00	0.00	40.4141510	-104.8284370	0.00
604.00	0.00	230.05	604.00	0.00	0.00	0.00	40.4141510	-104.8284370	0.00
704.00	0.00	230.05	704.00	0.00	0.00	0.00	40.4141510	-104.8284370	0.00
804.00	0.00	230.05	804.00	0.00	0.00	0.00	40.4141510	-104.8284370	0.00
904.00	0.00	230.05	904.00	0.00	0.00	0.00	40.4141510	-104.8284370	0.00
1000.00	0.00	230.05	1000.00	0.00	0.00	0.00	40.4141510	-104.8284370	0.00
1004.00	0.08	230.05	1004.00	0.00	0.00	0.00	40.4141510	-104.8284370	2.00
1104.00	2.08	230.05	1103.98	1.51	-1.21	-1.45	40.4141477	-104.8284422	2.00
1204.00	4.08	230.05	1203.83	5.81	-4.66	-5.57	40.4141382	-104.8284570	2.00

BOST FARM 12N-11C-L (REV-C.0) LAS.las

1304.00	6.08	230.05	1303.43	12.91	-10.35	-12.35	40.4141226	-104.8284814	2.00
1404.00	8.08	230.05	1402.66	22.78	-18.26	-21.80	40.4141009	-104.8285153	2.00
1418.51	8.37	230.05	1417.02	24.44	-19.60	-23.39	40.4140972	-104.8285210	2.00
1504.00	8.37	230.05	1501.60	34.41	-27.59	-32.93	40.4140753	-104.8285553	0.00
1604.00	8.37	230.05	1600.54	46.07	-36.94	-44.09	40.4140496	-104.8285953	0.00
1704.00	8.37	230.05	1699.47	57.73	-46.28	-55.25	40.4140240	-104.8286354	0.00
1804.00	8.37	230.05	1798.41	69.38	-55.63	-66.41	40.4139983	-104.8286755	0.00
1904.00	8.37	230.05	1897.34	81.04	-64.98	-77.56	40.4139726	-104.8287155	0.00
2004.00	8.37	230.05	1996.28	92.70	-74.33	-88.72	40.4139470	-104.8287556	0.00
2104.00	8.37	230.05	2095.21	104.36	-83.68	-99.88	40.4139213	-104.8287957	0.00
2204.00	8.37	230.05	2194.15	116.02	-93.03	-111.04	40.4138957	-104.8288358	0.00
2304.00	8.37	230.05	2293.08	127.68	-102.37	-122.20	40.4138700	-104.8288758	0.00
2404.00	8.37	230.05	2392.02	139.34	-111.72	-133.36	40.4138443	-104.8289159	0.00
2504.00	8.37	230.05	2490.95	151.00	-121.07	-144.52	40.4138187	-104.8289560	0.00
2604.00	8.37	230.05	2589.89	162.66	-130.42	-155.67	40.4137930	-104.8289960	0.00
2704.00	8.37	230.05	2688.82	174.31	-139.77	-166.83	40.4137674	-104.8290361	0.00
2804.00	8.37	230.05	2787.76	185.97	-149.12	-177.99	40.4137417	-104.8290762	0.00
2904.00	8.37	230.05	2886.69	197.63	-158.46	-189.15	40.4137160	-104.8291163	0.00
3004.00	8.37	230.05	2985.62	209.29	-167.81	-200.31	40.4136904	-104.8291563	0.00
3104.00	8.37	230.05	3084.56	220.95	-177.16	-211.47	40.4136647	-104.8291964	0.00
3204.00	8.37	230.05	3183.49	232.61	-186.51	-222.62	40.4136391	-104.8292365	0.00
3304.00	8.37	230.05	3282.43	244.27	-195.86	-233.78	40.4136134	-104.8292765	0.00
3404.00	8.37	230.05	3381.36	255.93	-205.21	-244.94	40.4135877	-104.8293166	0.00
3504.00	8.37	230.05	3480.30	267.59	-214.55	-256.10	40.4135621	-104.8293567	0.00
3604.00	8.37	230.05	3579.23	279.24	-223.90	-267.26	40.4135364	-104.8293968	0.00
3704.00	8.37	230.05	3678.17	290.90	-233.25	-278.42	40.4135108	-104.8294368	0.00
3804.00	8.37	230.05	3777.10	302.56	-242.60	-289.58	40.4134851	-104.8294769	0.00
3904.00	8.37	230.05	3876.04	314.22	-251.95	-300.73	40.4134594	-104.8295170	0.00
4004.00	8.37	230.05	3974.97	325.88	-261.29	-311.89	40.4134338	-104.8295570	0.00
4104.00	8.37	230.05	4073.91	337.54	-270.64	-323.05	40.4134081	-104.8295971	0.00
4204.00	8.37	230.05	4172.84	349.20	-279.99	-334.21	40.4133824	-104.8296372	0.00
4304.00	8.37	230.05	4271.78	360.86	-289.34	-345.37	40.4133568	-104.8296772	0.00
4404.00	8.37	230.05	4370.71	372.52	-298.69	-356.53	40.4133311	-104.8297173	0.00
4504.00	8.37	230.05	4469.65	384.17	-308.04	-367.69	40.4133055	-104.8297574	0.00

BOST FARM 12N-11C-L (REV-C.0) LAS.las

4604.00	8.37	230.05	4568.58	395.83	-317.38	-378.84	40.4132798	-104.8297975	0.00
4704.00	8.37	230.05	4667.52	407.49	-326.73	-390.00	40.4132541	-104.8298375	0.00
4804.00	8.37	230.05	4766.45	419.15	-336.08	-401.16	40.4132285	-104.8298776	0.00
4904.00	8.37	230.05	4865.39	430.81	-345.43	-412.32	40.4132028	-104.8299177	0.00
5004.00	8.37	230.05	4964.32	442.47	-354.78	-423.48	40.4131772	-104.8299577	0.00
5104.00	8.37	230.05	5063.26	454.13	-364.13	-434.64	40.4131515	-104.8299978	0.00
5204.00	8.37	230.05	5162.19	465.79	-373.47	-445.79	40.4131258	-104.8300379	0.00
5304.00	8.37	230.05	5261.13	477.45	-382.82	-456.95	40.4131002	-104.8300780	0.00
5404.00	8.37	230.05	5360.06	489.10	-392.17	-468.11	40.4130745	-104.8301180	0.00
5504.00	8.37	230.05	5459.00	500.76	-401.52	-479.27	40.4130489	-104.8301581	0.00
5604.00	8.37	230.05	5557.93	512.42	-410.87	-490.43	40.4130232	-104.8301982	0.00
5704.00	8.37	230.05	5656.86	524.08	-420.21	-501.59	40.4129975	-104.8302382	0.00
5804.00	8.37	230.05	5755.80	535.74	-429.56	-512.75	40.4129719	-104.8302783	0.00
5904.00	8.37	230.05	5854.73	547.40	-438.91	-523.90	40.4129462	-104.8303184	0.00
6004.00	8.37	230.05	5953.67	559.06	-448.26	-535.06	40.4129206	-104.8303584	0.00
6104.00	8.37	230.05	6052.60	570.72	-457.61	-546.22	40.4128949	-104.8303985	0.00
6204.00	8.37	230.05	6151.54	582.38	-466.96	-557.38	40.4128692	-104.8304386	0.00
6304.00	8.37	230.05	6250.47	594.03	-476.30	-568.54	40.4128436	-104.8304787	0.00
6404.00	8.37	230.05	6349.41	605.69	-485.65	-579.70	40.4128179	-104.8305187	0.00
6504.00	8.37	230.05	6448.34	617.35	-495.00	-590.85	40.4127923	-104.8305588	0.00
6569.88	8.37	230.05	6513.52	625.03	-501.16	-598.21	40.4127754	-104.8305852	0.00
6604.00	10.91	240.46	6547.16	629.92	-504.35	-602.92	40.4127666	-104.8306021	9.00
6704.00	19.26	253.94	6643.66	654.52	-513.59	-627.05	40.4127412	-104.8306888	9.00
6804.00	28.00	259.33	6735.19	693.95	-522.52	-666.04	40.4127167	-104.8308288	9.00
6904.00	36.86	262.29	6819.52	747.24	-530.91	-718.95	40.4126937	-104.8310188	9.00
7004.00	45.77	264.23	6894.55	813.06	-538.55	-784.45	40.4126727	-104.8312540	9.00
7104.00	54.71	265.65	6958.45	889.82	-545.26	-860.95	40.4126543	-104.8315287	9.00
7204.00	63.65	266.79	7009.63	975.60	-550.87	-946.55	40.4126389	-104.8318361	9.00
7304.00	72.61	267.77	7046.84	1068.30	-555.24	-1039.16	40.4126269	-104.8321687	9.00
7404.00	81.57	268.65	7069.17	1165.65	-558.27	-1136.48	40.4126185	-104.8325182	9.00
7504.00	90.53	269.49	7076.06	1265.23	-559.88	-1236.13	40.4126141	-104.8328760	9.00
7508.46	90.93	269.53	7076.00	1269.68	-559.92	-1240.58	40.4126140	-104.8328920	9.00
7604.00	90.92	269.53	7074.46	1365.10	-560.70	-1336.11	40.4126118	-104.8332350	0.01
7704.00	90.91	269.53	7072.87	1464.98	-561.51	-1436.10	40.4126096	-104.8335941	0.01

BOST FARM 12N-11C-L (REV-C.0) LAS.las

7804.00	90.90	269.53	7071.29	1564.86	-562.33	-1536.08	40.4126073	-104.8339531	0.01
7904.00	90.89	269.53	7069.73	1664.73	-563.14	-1636.06	40.4126051	-104.8343122	0.01
8004.00	90.88	269.54	7068.18	1764.61	-563.95	-1736.05	40.4126028	-104.8346712	0.01
8104.00	90.87	269.54	7066.65	1864.48	-564.77	-1836.03	40.4126006	-104.8350303	0.01
8204.00	90.86	269.54	7065.14	1964.36	-565.57	-1936.02	40.4125983	-104.8353893	0.01
8304.00	90.85	269.54	7063.64	2064.24	-566.38	-2036.00	40.4125961	-104.8357484	0.01
8404.00	90.85	269.54	7062.16	2164.12	-567.19	-2135.99	40.4125939	-104.8361075	0.01
8504.00	90.84	269.54	7060.69	2263.99	-567.99	-2235.98	40.4125916	-104.8364665	0.01
8604.00	90.83	269.54	7059.24	2363.87	-568.80	-2335.96	40.4125894	-104.8368256	0.01
8704.00	90.82	269.54	7057.81	2463.75	-569.60	-2435.95	40.4125872	-104.8371846	0.01
8804.00	90.81	269.54	7056.39	2563.63	-570.40	-2535.94	40.4125849	-104.8375437	0.01
8904.00	90.80	269.54	7054.99	2663.50	-571.20	-2635.92	40.4125827	-104.8379027	0.01
9004.00	90.79	269.54	7053.60	2763.38	-572.00	-2735.91	40.4125805	-104.8382618	0.01
9104.00	90.78	269.54	7052.23	2863.26	-572.80	-2835.90	40.4125783	-104.8386208	0.01
9204.00	90.77	269.54	7050.88	2963.14	-573.59	-2935.89	40.4125761	-104.8389799	0.01
9304.00	90.76	269.55	7049.54	3063.02	-574.39	-3035.87	40.4125739	-104.8393390	0.01
9404.00	90.75	269.55	7048.22	3162.90	-575.18	-3135.86	40.4125716	-104.8396980	0.01
9504.00	90.74	269.55	7046.91	3262.77	-575.97	-3235.85	40.4125694	-104.8400571	0.01
9604.00	90.74	269.55	7045.62	3362.65	-576.77	-3335.84	40.4125672	-104.8404162	0.01
9704.00	90.73	269.55	7044.34	3462.53	-577.55	-3435.83	40.4125650	-104.8407752	0.01
9804.00	90.72	269.55	7043.08	3562.41	-578.34	-3535.82	40.4125628	-104.8411343	0.01
9904.00	90.71	269.55	7041.84	3662.29	-579.13	-3635.81	40.4125606	-104.8414934	0.01
10004.00	90.70	269.55	7040.61	3762.17	-579.91	-3735.79	40.4125584	-104.8418524	0.01
10104.00	90.69	269.55	7039.40	3862.05	-580.70	-3835.78	40.4125562	-104.8422115	0.01
10204.00	90.68	269.55	7038.21	3961.93	-581.48	-3935.77	40.4125540	-104.8425706	0.01
10304.00	90.67	269.55	7037.03	4061.81	-582.26	-4035.76	40.4125518	-104.8429296	0.01
10404.00	90.66	269.55	7035.87	4161.69	-583.04	-4135.75	40.4125497	-104.8432887	0.01
10504.00	90.65	269.55	7034.72	4261.57	-583.82	-4235.74	40.4125475	-104.8436478	0.01
10604.00	90.64	269.56	7033.59	4361.45	-584.60	-4335.74	40.4125453	-104.8440068	0.01
10704.00	90.64	269.56	7032.47	4461.33	-585.37	-4435.73	40.4125431	-104.8443659	0.01
10804.00	90.63	269.56	7031.37	4561.21	-586.15	-4535.72	40.4125409	-104.8447250	0.01
10904.00	90.62	269.56	7030.29	4661.09	-586.92	-4635.71	40.4125388	-104.8450840	0.01
11004.00	90.61	269.56	7029.22	4760.97	-587.69	-4735.70	40.4125366	-104.8454431	0.01
11104.00	90.60	269.56	7028.17	4860.85	-588.46	-4835.69	40.4125344	-104.8458022	0.01

BOST FARM 12N-11C-L (REV-C.0) LAS.las

11204.00	90.59	269.56	7027.13	4960.73	-589.23	-4935.68	40.4125323	-104.8461613	0.01
11304.00	90.58	269.56	7026.11	5060.62	-590.00	-5035.67	40.4125301	-104.8465203	0.01
11404.00	90.57	269.56	7025.11	5160.50	-590.77	-5135.67	40.4125279	-104.8468794	0.01
11504.00	90.56	269.56	7024.12	5260.38	-591.53	-5235.66	40.4125258	-104.8472385	0.01
11604.00	90.55	269.56	7023.15	5360.26	-592.30	-5335.65	40.4125236	-104.8475976	0.01
11704.00	90.54	269.56	7022.19	5460.14	-593.06	-5435.64	40.4125215	-104.8479566	0.01
11804.00	90.53	269.56	7021.25	5560.02	-593.82	-5535.64	40.4125193	-104.8483157	0.01
11904.00	90.53	269.57	7020.33	5659.90	-594.58	-5635.63	40.4125172	-104.8486748	0.01
12004.00	90.52	269.57	7019.42	5759.78	-595.34	-5735.62	40.4125150	-104.8490339	0.01
12104.00	90.51	269.57	7018.53	5859.67	-596.10	-5835.62	40.4125129	-104.8493930	0.01
12204.00	90.50	269.57	7017.65	5959.55	-596.85	-5935.61	40.4125107	-104.8497520	0.01
12304.00	90.49	269.57	7016.79	6059.43	-597.61	-6035.60	40.4125086	-104.8501111	0.01
12404.00	90.48	269.57	7015.95	6159.31	-598.36	-6135.60	40.4125065	-104.8504702	0.01
12504.00	90.47	269.57	7015.12	6259.19	-599.11	-6235.59	40.4125043	-104.8508293	0.01
12604.00	90.46	269.57	7014.31	6359.08	-599.86	-6335.58	40.4125022	-104.8511884	0.01
12704.00	90.45	269.57	7013.51	6458.96	-600.61	-6435.58	40.4125001	-104.8515474	0.01
12804.00	90.44	269.57	7012.73	6558.84	-601.36	-6535.57	40.4124980	-104.8519065	0.01
12904.00	90.43	269.57	7011.97	6658.72	-602.11	-6635.57	40.4124958	-104.8522656	0.01
13004.00	90.42	269.57	7011.22	6758.61	-602.85	-6735.56	40.4124937	-104.8526247	0.01
13104.00	90.42	269.57	7010.48	6858.49	-603.60	-6835.55	40.4124916	-104.8529838	0.01
13204.00	90.41	269.58	7009.77	6958.37	-604.34	-6935.55	40.4124895	-104.8533429	0.01
13304.00	90.40	269.58	7009.07	7058.25	-605.08	-7035.54	40.4124874	-104.8537020	0.01
13404.00	90.39	269.58	7008.38	7158.13	-605.82	-7135.54	40.4124853	-104.8540610	0.01
13504.00	90.38	269.58	7007.71	7258.02	-606.56	-7235.53	40.4124831	-104.8544201	0.01
13604.00	90.37	269.58	7007.06	7357.90	-607.30	-7335.53	40.4124810	-104.8547792	0.01
13704.00	90.36	269.58	7006.42	7457.78	-608.03	-7435.52	40.4124789	-104.8551383	0.01
13804.00	90.35	269.58	7005.80	7557.67	-608.77	-7535.52	40.4124768	-104.8554974	0.01
13904.00	90.34	269.58	7005.19	7657.55	-609.50	-7635.52	40.4124747	-104.8558565	0.01
14004.00	90.33	269.58	7004.60	7757.43	-610.23	-7735.51	40.4124727	-104.8562156	0.01
14104.00	90.32	269.58	7004.03	7857.31	-610.96	-7835.51	40.4124706	-104.8565746	0.01
14204.00	90.32	269.58	7003.47	7957.20	-611.69	-7935.50	40.4124685	-104.8569337	0.01
14304.00	90.31	269.58	7002.93	8057.08	-612.42	-8035.50	40.4124664	-104.8572928	0.01
14404.00	90.30	269.58	7002.41	8156.96	-613.15	-8135.49	40.4124643	-104.8576519	0.01
14504.00	90.29	269.58	7001.90	8256.84	-613.87	-8235.49	40.4124622	-104.8580110	0.01

BOST FARM 12N-11C-L (REV-C.0) LAS.las

14604.00	90.28	269.59	7001.40	8356.73	-614.60	-8335.49	40.4124601	-104.8583701	0.01
14704.00	90.27	269.59	7000.93	8456.61	-615.32	-8435.48	40.4124581	-104.8587292	0.01
14804.00	90.26	269.59	7000.46	8556.49	-616.04	-8535.48	40.4124560	-104.8590883	0.01
14904.00	90.25	269.59	7000.02	8656.38	-616.76	-8635.48	40.4124539	-104.8594474	0.01
15004.00	90.24	269.59	6999.59	8756.26	-617.48	-8735.47	40.4124518	-104.8598065	0.01
15104.00	90.23	269.59	6999.17	8856.14	-618.20	-8835.47	40.4124498	-104.8601655	0.01
15204.00	90.22	269.59	6998.77	8956.03	-618.91	-8935.47	40.4124477	-104.8605246	0.01
15304.00	90.21	269.59	6998.39	9055.91	-619.63	-9035.46	40.4124457	-104.8608837	0.01
15404.00	90.21	269.59	6998.03	9155.79	-620.34	-9135.46	40.4124436	-104.8612428	0.01
15504.00	90.20	269.59	6997.68	9255.67	-621.05	-9235.46	40.4124415	-104.8616019	0.01
15604.00	90.19	269.59	6997.34	9355.56	-621.76	-9335.45	40.4124395	-104.8619610	0.01
15704.00	90.18	269.59	6997.02	9455.44	-622.47	-9435.45	40.4124374	-104.8623201	0.01
15804.00	90.17	269.60	6996.72	9555.32	-623.18	-9535.45	40.4124354	-104.8626792	0.01
15904.00	90.16	269.60	6996.43	9655.21	-623.88	-9635.44	40.4124333	-104.8630383	0.01
16004.00	90.15	269.60	6996.16	9755.09	-624.59	-9735.44	40.4124313	-104.8633974	0.01
16104.00	90.14	269.60	6995.91	9854.97	-625.29	-9835.44	40.4124293	-104.8637565	0.01
16204.00	90.13	269.60	6995.67	9954.85	-626.00	-9935.44	40.4124272	-104.8641156	0.01
16304.00	90.12	269.60	6995.45	10054.74	-626.70	-10035.43	40.4124252	-104.8644747	0.01
16404.00	90.11	269.60	6995.24	10154.62	-627.40	-10135.43	40.4124232	-104.8648337	0.01
16504.00	90.11	269.60	6995.05	10254.50	-628.10	-10235.43	40.4124211	-104.8651928	0.01
16604.00	90.10	269.60	6994.87	10354.38	-628.79	-10335.42	40.4124191	-104.8655519	0.01
16704.00	90.09	269.60	6994.72	10454.27	-629.49	-10435.42	40.4124171	-104.8659110	0.01
16804.00	90.08	269.60	6994.57	10554.15	-630.18	-10535.42	40.4124150	-104.8662701	0.01
16904.00	90.07	269.60	6994.45	10654.03	-630.88	-10635.42	40.4124130	-104.8666292	0.01
17004.00	90.06	269.60	6994.33	10753.91	-631.57	-10735.41	40.4124110	-104.8669883	0.01
17104.00	90.05	269.61	6994.24	10853.80	-632.26	-10835.41	40.4124090	-104.8673474	0.01
17204.00	90.04	269.61	6994.16	10953.68	-632.95	-10935.41	40.4124070	-104.8677065	0.01
17304.00	90.03	269.61	6994.10	11053.56	-633.64	-11035.41	40.4124050	-104.8680656	0.01
17404.00	90.02	269.61	6994.05	11153.44	-634.32	-11135.40	40.4124030	-104.8684247	0.01
17504.00	90.01	269.61	6994.02	11253.33	-635.01	-11235.40	40.4124010	-104.8687838	0.01
17604.00	90.00	269.61	6994.00	11353.21	-635.69	-11335.40	40.4123990	-104.8691429	0.01
17651.65	90.00	269.61	6994.00	11400.81	-636.02	-11383.05	40.4123980	-104.8693140	0.01
17704.00	90.00	269.61	6994.00	11453.09	-636.37	-11435.40	40.4123970	-104.8695020	0.00
17751.63	90.00	269.61	6994.00	11500.66	-636.70	-11483.02	40.4123960	-104.8696730	0.00



Planned Wellpath Report

BOST FARM 12N-11C-L (REV-C.0) PWP

Page 1 of 10



REFERENCE WELLPATH IDENTIFICATION

Operator	SRC ENERGY	Slot	SLOT#03 BOST FARM 12N-11C-L (2666'FSL & 1094'FWL, SEC.07)
Area	COLORADO	Well	BOST FARM 12N-11C-L
Field	WELD COUNTY (NAD83,TRUE NORTH)	Wellbore	BOST FARM 12N-11C-L PWB
Facility	SEC.07-T05N-R66W		

REPORT SETUP INFORMATION

Projection System	NAD83 / Lambert Colorado SP, Northern Zone (501), US feet	Software System	WellArchitect® 5.1
North Reference	True	User	Bushjamh
Scale	0.999961	Report Generated	01/03/2019 at 13:59
Convergence at slot	0.43° East	Database/Source file	WA_DEN_Denver_Defn/BOST FARM 12N-11C-L (REV-C.0) PWP PR.xml

WELLPATH LOCATION

	Local coordinates		Grid coordinates		Geographic coordinates	
	North[ft]	East[ft]	Easting[US ft]	Northing[US ft]	Latitude	Longitude
Slot Location	115.12	-164.31	3186996.42	1394423.66	40°24'50.944"N	104°49'42.373"W
Facility Reference Pt			3187161.59	1394309.79	40°24'49.806"N	104°49'40.249"W
Field Reference Pt			3171284.48	1426358.81	40°30'07.643"N	104°53'02.634"W

WELLPATH DATUM

Calculation method	Minimum curvature	IKON 12 (4') (RKB) to Facility Vertical Datum	4880.00ft
Horizontal Reference Pt	Slot	IKON 12 (4') (RKB) to Mean Sea Level	4880.00ft
Vertical Reference Pt	IKON 12 (4') (RKB)	IKON 12 (4') (RKB) to Mud Line at Slot (SLOT#03 BOST FARM 12N-11C-L (2666'FSL & 1094'FWL, SEC.07))	4880.00ft
MD Reference Pt	IKON 12 (4') (RKB)	Section Origin	N 0.00, E 0.00 ft
Field Vertical Reference	Mean Sea Level	Section Azimuth	266.83°



Planned Wellpath Report

BOST FARM 12N-11C-L (REV-C.0) PWP

Page 2 of 10



REFERENCE WELLPATH IDENTIFICATION

Operator	SRC ENERGY	Slot	SLOT#03 BOST FARM 12N-11C-L (2666'FSL & 1094'FWL, SEC.07)
Area	COLORADO	Well	BOST FARM 12N-11C-L
Field	WELD COUNTY (NAD83,TRUE NORTH)	Wellbore	BOST FARM 12N-11C-L PWB
Facility	SEC.07-T05N-R66W		

WELLPATH DATA (185 stations) † = interpolated/extrapolated station

MD [ft]	Inclination [°]	Azimuth [°]	TVD [ft]	Vert Sect [ft]	North [ft]	East [ft]	Latitude	Longitude	DLS [°/100ft]	Comments
0.00†	0.000	230.045	0.00	0.00	0.00	0.00	40°24'50.944"N	104°49'42.373"W	0.00	
4.00	0.000	230.045	4.00	0.00	0.00	0.00	40°24'50.944"N	104°49'42.373"W	0.00	Tie On
104.00†	0.000	230.045	104.00	0.00	0.00	0.00	40°24'50.944"N	104°49'42.373"W	0.00	
204.00†	0.000	230.045	204.00	0.00	0.00	0.00	40°24'50.944"N	104°49'42.373"W	0.00	
304.00†	0.000	230.045	304.00	0.00	0.00	0.00	40°24'50.944"N	104°49'42.373"W	0.00	
404.00†	0.000	230.045	404.00	0.00	0.00	0.00	40°24'50.944"N	104°49'42.373"W	0.00	
504.00†	0.000	230.045	504.00	0.00	0.00	0.00	40°24'50.944"N	104°49'42.373"W	0.00	
604.00†	0.000	230.045	604.00	0.00	0.00	0.00	40°24'50.944"N	104°49'42.373"W	0.00	
704.00†	0.000	230.045	704.00	0.00	0.00	0.00	40°24'50.944"N	104°49'42.373"W	0.00	
804.00†	0.000	230.045	804.00	0.00	0.00	0.00	40°24'50.944"N	104°49'42.373"W	0.00	
904.00†	0.000	230.045	904.00	0.00	0.00	0.00	40°24'50.944"N	104°49'42.373"W	0.00	
1000.00	0.000	230.045	1000.00	0.00	0.00	0.00	40°24'50.944"N	104°49'42.373"W	0.00	End of Tangent
1004.00†	0.080	230.045	1004.00	0.00	0.00	0.00	40°24'50.944"N	104°49'42.373"W	2.00	
1104.00†	2.080	230.045	1103.98	1.51	-1.21	-1.45	40°24'50.932"N	104°49'42.392"W	2.00	
1204.00†	4.080	230.045	1203.83	5.81	-4.66	-5.57	40°24'50.898"N	104°49'42.445"W	2.00	
1304.00†	6.080	230.045	1303.43	12.91	-10.35	-12.35	40°24'50.841"N	104°49'42.533"W	2.00	
1404.00†	8.080	230.045	1402.66	22.78	-18.26	-21.80	40°24'50.763"N	104°49'42.655"W	2.00	
1418.51	8.370	230.045	1417.02	24.44	-19.60	-23.39	40°24'50.750"N	104°49'42.676"W	2.00	End of Build
1504.00†	8.370	230.045	1501.60	34.41	-27.59	-32.93	40°24'50.671"N	104°49'42.799"W	0.00	
1604.00†	8.370	230.045	1600.54	46.07	-36.94	-44.09	40°24'50.579"N	104°49'42.943"W	0.00	
1704.00†	8.370	230.045	1699.47	57.73	-46.28	-55.25	40°24'50.486"N	104°49'43.087"W	0.00	
1804.00†	8.370	230.045	1798.41	69.38	-55.63	-66.41	40°24'50.394"N	104°49'43.232"W	0.00	
1904.00†	8.370	230.045	1897.34	81.04	-64.98	-77.56	40°24'50.301"N	104°49'43.376"W	0.00	
2004.00†	8.370	230.045	1996.28	92.70	-74.33	-88.72	40°24'50.209"N	104°49'43.520"W	0.00	
2104.00†	8.370	230.045	2095.21	104.36	-83.68	-99.88	40°24'50.117"N	104°49'43.664"W	0.00	
2204.00†	8.370	230.045	2194.15	116.02	-93.03	-111.04	40°24'50.024"N	104°49'43.809"W	0.00	
2304.00†	8.370	230.045	2293.08	127.68	-102.37	-122.20	40°24'49.932"N	104°49'43.953"W	0.00	
2404.00†	8.370	230.045	2392.02	139.34	-111.72	-133.36	40°24'49.840"N	104°49'44.097"W	0.00	
2504.00†	8.370	230.045	2490.95	151.00	-121.07	-144.52	40°24'49.747"N	104°49'44.241"W	0.00	
2604.00†	8.370	230.045	2589.89	162.66	-130.42	-155.67	40°24'49.655"N	104°49'44.386"W	0.00	



Planned Wellpath Report

BOST FARM 12N-11C-L (REV-C.0) PWP

Page 3 of 10



REFERENCE WELLPATH IDENTIFICATION

Operator	SRC ENERGY	Slot	SLOT#03 BOST FARM 12N-11C-L (2666'FSL & 1094'FWL, SEC.07)
Area	COLORADO	Well	BOST FARM 12N-11C-L
Field	WELD COUNTY (NAD83,TRUE NORTH)	Wellbore	BOST FARM 12N-11C-L PWB
Facility	SEC.07-T05N-R66W		

WELLPATH DATA (185 stations) † = interpolated/extrapolated station

MD [ft]	Inclination [°]	Azimuth [°]	TVD [ft]	Vert Sect [ft]	North [ft]	East [ft]	Latitude	Longitude	DLS [°/100ft]	Comments
2704.00†	8.370	230.045	2688.82	174.31	-139.77	-166.83	40°24'49.562"N	104°49'44.530"W	0.00	
2804.00†	8.370	230.045	2787.76	185.97	-149.12	-177.99	40°24'49.470"N	104°49'44.674"W	0.00	
2904.00†	8.370	230.045	2886.69	197.63	-158.46	-189.15	40°24'49.378"N	104°49'44.819"W	0.00	
3004.00†	8.370	230.045	2985.62	209.29	-167.81	-200.31	40°24'49.285"N	104°49'44.963"W	0.00	
3104.00†	8.370	230.045	3084.56	220.95	-177.16	-211.47	40°24'49.193"N	104°49'45.107"W	0.00	
3204.00†	8.370	230.045	3183.49	232.61	-186.51	-222.62	40°24'49.101"N	104°49'45.251"W	0.00	
3304.00†	8.370	230.045	3282.43	244.27	-195.86	-233.78	40°24'49.008"N	104°49'45.396"W	0.00	
3404.00†	8.370	230.045	3381.36	255.93	-205.21	-244.94	40°24'48.916"N	104°49'45.540"W	0.00	
3504.00†	8.370	230.045	3480.30	267.59	-214.55	-256.10	40°24'48.823"N	104°49'45.684"W	0.00	
3604.00†	8.370	230.045	3579.23	279.24	-223.90	-267.26	40°24'48.731"N	104°49'45.828"W	0.00	
3704.00†	8.370	230.045	3678.17	290.90	-233.25	-278.42	40°24'48.639"N	104°49'45.973"W	0.00	
3804.00†	8.370	230.045	3777.10	302.56	-242.60	-289.58	40°24'48.546"N	104°49'46.117"W	0.00	
3904.00†	8.370	230.045	3876.04	314.22	-251.95	-300.73	40°24'48.454"N	104°49'46.261"W	0.00	
4004.00†	8.370	230.045	3974.97	325.88	-261.29	-311.89	40°24'48.362"N	104°49'46.405"W	0.00	
4104.00†	8.370	230.045	4073.91	337.54	-270.64	-323.05	40°24'48.269"N	104°49'46.550"W	0.00	
4204.00†	8.370	230.045	4172.84	349.20	-279.99	-334.21	40°24'48.177"N	104°49'46.694"W	0.00	
4304.00†	8.370	230.045	4271.78	360.86	-289.34	-345.37	40°24'48.084"N	104°49'46.838"W	0.00	
4404.00†	8.370	230.045	4370.71	372.52	-298.69	-356.53	40°24'47.992"N	104°49'46.982"W	0.00	
4504.00†	8.370	230.045	4469.65	384.17	-308.04	-367.69	40°24'47.900"N	104°49'47.127"W	0.00	
4604.00†	8.370	230.045	4568.58	395.83	-317.38	-378.84	40°24'47.807"N	104°49'47.271"W	0.00	
4704.00†	8.370	230.045	4667.52	407.49	-326.73	-390.00	40°24'47.715"N	104°49'47.415"W	0.00	
4804.00†	8.370	230.045	4766.45	419.15	-336.08	-401.16	40°24'47.623"N	104°49'47.559"W	0.00	
4904.00†	8.370	230.045	4865.39	430.81	-345.43	-412.32	40°24'47.530"N	104°49'47.704"W	0.00	
5004.00†	8.370	230.045	4964.32	442.47	-354.78	-423.48	40°24'47.438"N	104°49'47.848"W	0.00	
5104.00†	8.370	230.045	5063.26	454.13	-364.13	-434.64	40°24'47.345"N	104°49'47.992"W	0.00	
5204.00†	8.370	230.045	5162.19	465.79	-373.47	-445.79	40°24'47.253"N	104°49'48.136"W	0.00	
5304.00†	8.370	230.045	5261.13	477.45	-382.82	-456.95	40°24'47.161"N	104°49'48.281"W	0.00	
5404.00†	8.370	230.045	5360.06	489.10	-392.17	-468.11	40°24'47.068"N	104°49'48.425"W	0.00	
5504.00†	8.370	230.045	5459.00	500.76	-401.52	-479.27	40°24'46.976"N	104°49'48.569"W	0.00	
5604.00†	8.370	230.045	5557.93	512.42	-410.87	-490.43	40°24'46.884"N	104°49'48.713"W	0.00	



Planned Wellpath Report

BOST FARM 12N-11C-L (REV-C.0) PWP

Page 4 of 10



REFERENCE WELLPATH IDENTIFICATION

Operator	SRC ENERGY	Slot	SLOT#03 BOST FARM 12N-11C-L (2666'FSL & 1094'FWL, SEC.07)
Area	COLORADO	Well	BOST FARM 12N-11C-L
Field	WELD COUNTY (NAD83,TRUE NORTH)	Wellbore	BOST FARM 12N-11C-L PWB
Facility	SEC.07-T05N-R66W		

WELLPATH DATA (185 stations) † = interpolated/extrapolated station

MD [ft]	Inclination [°]	Azimuth [°]	TVD [ft]	Vert Sect [ft]	North [ft]	East [ft]	Latitude	Longitude	DLS [°/100ft]	Comments
5704.00†	8.370	230.045	5656.86	524.08	-420.21	-501.59	40°24'46.791"N	104°49'48.858"W	0.00	
5804.00†	8.370	230.045	5755.80	535.74	-429.56	-512.75	40°24'46.699"N	104°49'49.002"W	0.00	
5904.00†	8.370	230.045	5854.73	547.40	-438.91	-523.90	40°24'46.606"N	104°49'49.146"W	0.00	
6004.00†	8.370	230.045	5953.67	559.06	-448.26	-535.06	40°24'46.514"N	104°49'49.290"W	0.00	
6104.00†	8.370	230.045	6052.60	570.72	-457.61	-546.22	40°24'46.422"N	104°49'49.435"W	0.00	
6204.00†	8.370	230.045	6151.54	582.38	-466.96	-557.38	40°24'46.329"N	104°49'49.579"W	0.00	
6304.00†	8.370	230.045	6250.47	594.03	-476.30	-568.54	40°24'46.237"N	104°49'49.723"W	0.00	
6404.00†	8.370	230.045	6349.41	605.69	-485.65	-579.70	40°24'46.145"N	104°49'49.867"W	0.00	
6504.00†	8.370	230.045	6448.34	617.35	-495.00	-590.85	40°24'46.052"N	104°49'50.012"W	0.00	
6569.88	8.370	230.045	6513.52	625.03	-501.16	-598.21	40°24'45.991"N	104°49'50.107"W	0.00	End of Tangent
6604.00†	10.909	240.462	6547.16	629.92	-504.35	-602.92	40°24'45.960"N	104°49'50.168"W	9.00	
6704.00†	19.256	253.939	6643.66	654.52	-513.59	-627.05	40°24'45.868"N	104°49'50.480"W	9.00	
6804.00†	28.002	259.329	6735.19	693.95	-522.52	-666.04	40°24'45.780"N	104°49'50.984"W	9.00	
6904.00†	36.863	262.290	6819.52	747.24	-530.91	-718.95	40°24'45.697"N	104°49'51.668"W	9.00	
7004.00†	45.773	264.229	6894.55	813.06	-538.55	-784.45	40°24'45.622"N	104°49'52.514"W	9.00	
7104.00†	54.706	265.654	6958.45	889.82	-545.26	-860.95	40°24'45.555"N	104°49'53.503"W	9.00	
7204.00†	63.653	266.794	7009.63	975.60	-550.87	-946.55	40°24'45.500"N	104°49'54.610"W	9.00	
7304.00†	72.607	267.768	7046.84	1068.30	-555.24	-1039.16	40°24'45.457"N	104°49'55.807"W	9.00	
7404.00†	81.566	268.651	7069.17	1165.65	-558.27	-1136.48	40°24'45.427"N	104°49'57.065"W	9.00	
7504.00†	90.527	269.494	7076.06	1265.23	-559.88	-1236.13	40°24'45.411"N	104°49'58.354"W	9.00	
7508.46	90.926	269.531	7076.00†	1269.68	-559.92	-1240.58	40°24'45.410"N	104°49'58.411"W	9.00	End of 3D Arc
7604.00†	90.918	269.532	7074.46	1365.10	-560.70	-1336.11	40°24'45.403"N	104°49'59.646"W	0.01	
7704.00†	90.909	269.533	7072.87	1464.98	-561.51	-1436.10	40°24'45.395"N	104°50'00.939"W	0.01	
7804.00†	90.899	269.534	7071.29	1564.86	-562.33	-1536.08	40°24'45.386"N	104°50'02.231"W	0.01	
7904.00†	90.890	269.534	7069.73	1664.73	-563.14	-1636.06	40°24'45.378"N	104°50'03.524"W	0.01	
8004.00†	90.881	269.535	7068.18	1764.61	-563.95	-1736.05	40°24'45.370"N	104°50'04.816"W	0.01	
8104.00†	90.872	269.536	7066.65	1864.48	-564.77	-1836.03	40°24'45.362"N	104°50'06.109"W	0.01	
8204.00†	90.863	269.537	7065.14	1964.36	-565.57	-1936.02	40°24'45.354"N	104°50'07.402"W	0.01	
8304.00†	90.854	269.537	7063.64	2064.24	-566.38	-2036.00	40°24'45.346"N	104°50'08.694"W	0.01	
8404.00†	90.845	269.538	7062.16	2164.12	-567.19	-2135.99	40°24'45.338"N	104°50'09.987"W	0.01	



Planned Wellpath Report

BOST FARM 12N-11C-L (REV-C.0) PWP

Page 5 of 10



REFERENCE WELLPATH IDENTIFICATION

Operator	SRC ENERGY	Slot	SLOT#03 BOST FARM 12N-11C-L (2666'FSL & 1094'FWL, SEC.07)
Area	COLORADO	Well	BOST FARM 12N-11C-L
Field	WELD COUNTY (NAD83,TRUE NORTH)	Wellbore	BOST FARM 12N-11C-L PWB
Facility	SEC.07-T05N-R66W		

WELLPATH DATA (185 stations) † = interpolated/extrapolated station

MD [ft]	Inclination [°]	Azimuth [°]	TVD [ft]	Vert Sect [ft]	North [ft]	East [ft]	Latitude	Longitude	DLS [°/100ft]	Comments
8504.00†	90.835	269.539	7060.69	2263.99	-567.99	-2235.98	40°24'45.330"N	104°50'11.279"W	0.01	
8604.00†	90.826	269.540	7059.24	2363.87	-568.80	-2335.96	40°24'45.322"N	104°50'12.572"W	0.01	
8704.00†	90.817	269.540	7057.81	2463.75	-569.60	-2435.95	40°24'45.314"N	104°50'13.865"W	0.01	
8804.00†	90.808	269.541	7056.39	2563.63	-570.40	-2535.94	40°24'45.306"N	104°50'15.157"W	0.01	
8904.00†	90.799	269.542	7054.99	2663.50	-571.20	-2635.92	40°24'45.298"N	104°50'16.450"W	0.01	
9004.00†	90.790	269.543	7053.60	2763.38	-572.00	-2735.91	40°24'45.290"N	104°50'17.742"W	0.01	
9104.00†	90.781	269.544	7052.23	2863.26	-572.80	-2835.90	40°24'45.282"N	104°50'19.035"W	0.01	
9204.00†	90.772	269.544	7050.88	2963.14	-573.59	-2935.89	40°24'45.274"N	104°50'20.328"W	0.01	
9304.00†	90.762	269.545	7049.54	3063.02	-574.39	-3035.87	40°24'45.266"N	104°50'21.620"W	0.01	
9404.00†	90.753	269.546	7048.22	3162.90	-575.18	-3135.86	40°24'45.258"N	104°50'22.913"W	0.01	
9504.00†	90.744	269.547	7046.91	3262.77	-575.97	-3235.85	40°24'45.250"N	104°50'24.206"W	0.01	
9604.00†	90.735	269.547	7045.62	3362.65	-576.77	-3335.84	40°24'45.242"N	104°50'25.498"W	0.01	
9704.00†	90.726	269.548	7044.34	3462.53	-577.55	-3435.83	40°24'45.234"N	104°50'26.791"W	0.01	
9804.00†	90.717	269.549	7043.08	3562.41	-578.34	-3535.82	40°24'45.226"N	104°50'28.083"W	0.01	
9904.00†	90.708	269.550	7041.84	3662.29	-579.13	-3635.81	40°24'45.218"N	104°50'29.376"W	0.01	
10004.00†	90.698	269.550	7040.61	3762.17	-579.91	-3735.79	40°24'45.210"N	104°50'30.669"W	0.01	
10104.00†	90.689	269.551	7039.40	3862.05	-580.70	-3835.78	40°24'45.202"N	104°50'31.961"W	0.01	
10204.00†	90.680	269.552	7038.21	3961.93	-581.48	-3935.77	40°24'45.195"N	104°50'33.254"W	0.01	
10304.00†	90.671	269.553	7037.03	4061.81	-582.26	-4035.76	40°24'45.187"N	104°50'34.547"W	0.01	
10404.00†	90.662	269.553	7035.87	4161.69	-583.04	-4135.75	40°24'45.179"N	104°50'35.839"W	0.01	
10504.00†	90.653	269.554	7034.72	4261.57	-583.82	-4235.74	40°24'45.171"N	104°50'37.132"W	0.01	
10604.00†	90.644	269.555	7033.59	4361.45	-584.60	-4335.74	40°24'45.163"N	104°50'38.425"W	0.01	
10704.00†	90.635	269.556	7032.47	4461.33	-585.37	-4435.73	40°24'45.155"N	104°50'39.717"W	0.01	
10804.00†	90.625	269.557	7031.37	4561.21	-586.15	-4535.72	40°24'45.147"N	104°50'41.010"W	0.01	
10904.00†	90.616	269.557	7030.29	4661.09	-586.92	-4635.71	40°24'45.140"N	104°50'42.303"W	0.01	
11004.00†	90.607	269.558	7029.22	4760.97	-587.69	-4735.70	40°24'45.132"N	104°50'43.595"W	0.01	
11104.00†	90.598	269.559	7028.17	4860.85	-588.46	-4835.69	40°24'45.124"N	104°50'44.888"W	0.01	
11204.00†	90.589	269.560	7027.13	4960.73	-589.23	-4935.68	40°24'45.116"N	104°50'46.181"W	0.01	
11304.00†	90.580	269.560	7026.11	5060.62	-590.00	-5035.67	40°24'45.108"N	104°50'47.473"W	0.01	
11404.00†	90.571	269.561	7025.11	5160.50	-590.77	-5135.67	40°24'45.101"N	104°50'48.766"W	0.01	



Planned Wellpath Report

BOST FARM 12N-11C-L (REV-C.0) PWP

Page 6 of 10



REFERENCE WELLPATH IDENTIFICATION

Operator	SRC ENERGY	Slot	SLOT#03 BOST FARM 12N-11C-L (2666'FSL & 1094'FWL, SEC.07)
Area	COLORADO	Well	BOST FARM 12N-11C-L
Field	WELD COUNTY (NAD83,TRUE NORTH)	Wellbore	BOST FARM 12N-11C-L PWB
Facility	SEC.07-T05N-R66W		

WELLPATH DATA (185 stations) † = interpolated/extrapolated station

MD [ft]	Inclination [°]	Azimuth [°]	TVD [ft]	Vert Sect [ft]	North [ft]	East [ft]	Latitude	Longitude	DLS [°/100ft]	Comments
11504.00†	90.561	269.562	7024.12	5260.38	-591.53	-5235.66	40°24'45.093"N	104°50'50.059"W	0.01	
11604.00†	90.552	269.563	7023.15	5360.26	-592.30	-5335.65	40°24'45.085"N	104°50'51.351"W	0.01	
11704.00†	90.543	269.563	7022.19	5460.14	-593.06	-5435.64	40°24'45.077"N	104°50'52.644"W	0.01	
11804.00†	90.534	269.564	7021.25	5560.02	-593.82	-5535.64	40°24'45.070"N	104°50'53.937"W	0.01	
11904.00†	90.525	269.565	7020.33	5659.90	-594.58	-5635.63	40°24'45.062"N	104°50'55.229"W	0.01	
12004.00†	90.516	269.566	7019.42	5759.78	-595.34	-5735.62	40°24'45.054"N	104°50'56.522"W	0.01	
12104.00†	90.507	269.566	7018.53	5859.67	-596.10	-5835.62	40°24'45.046"N	104°50'57.815"W	0.01	
12204.00†	90.498	269.567	7017.65	5959.55	-596.85	-5935.61	40°24'45.039"N	104°50'59.107"W	0.01	
12304.00†	90.488	269.568	7016.79	6059.43	-597.61	-6035.60	40°24'45.031"N	104°51'00.400"W	0.01	
12404.00†	90.479	269.569	7015.95	6159.31	-598.36	-6135.60	40°24'45.023"N	104°51'01.693"W	0.01	
12504.00†	90.470	269.570	7015.12	6259.19	-599.11	-6235.59	40°24'45.016"N	104°51'02.985"W	0.01	
12604.00†	90.461	269.570	7014.31	6359.08	-599.86	-6335.58	40°24'45.008"N	104°51'04.278"W	0.01	
12704.00†	90.452	269.571	7013.51	6458.96	-600.61	-6435.58	40°24'45.000"N	104°51'05.571"W	0.01	
12804.00†	90.443	269.572	7012.73	6558.84	-601.36	-6535.57	40°24'44.993"N	104°51'06.864"W	0.01	
12904.00†	90.434	269.573	7011.97	6658.72	-602.11	-6635.57	40°24'44.985"N	104°51'08.156"W	0.01	
13004.00†	90.424	269.573	7011.22	6758.61	-602.85	-6735.56	40°24'44.977"N	104°51'09.449"W	0.01	
13104.00†	90.415	269.574	7010.48	6858.49	-603.60	-6835.55	40°24'44.970"N	104°51'10.742"W	0.01	
13204.00†	90.406	269.575	7009.77	6958.37	-604.34	-6935.55	40°24'44.962"N	104°51'12.034"W	0.01	
13304.00†	90.397	269.576	7009.07	7058.25	-605.08	-7035.54	40°24'44.955"N	104°51'13.327"W	0.01	
13404.00†	90.388	269.576	7008.38	7158.13	-605.82	-7135.54	40°24'44.947"N	104°51'14.620"W	0.01	
13504.00†	90.379	269.577	7007.71	7258.02	-606.56	-7235.53	40°24'44.939"N	104°51'15.912"W	0.01	
13604.00†	90.370	269.578	7007.06	7357.90	-607.30	-7335.53	40°24'44.932"N	104°51'17.205"W	0.01	
13704.00†	90.361	269.579	7006.42	7457.78	-608.03	-7435.52	40°24'44.924"N	104°51'18.498"W	0.01	
13804.00†	90.351	269.579	7005.80	7557.67	-608.77	-7535.52	40°24'44.917"N	104°51'19.791"W	0.01	
13904.00†	90.342	269.580	7005.19	7657.55	-609.50	-7635.52	40°24'44.909"N	104°51'21.083"W	0.01	
14004.00†	90.333	269.581	7004.60	7757.43	-610.23	-7735.51	40°24'44.902"N	104°51'22.376"W	0.01	
14104.00†	90.324	269.582	7004.03	7857.31	-610.96	-7835.51	40°24'44.894"N	104°51'23.669"W	0.01	
14204.00†	90.315	269.583	7003.47	7957.20	-611.69	-7935.50	40°24'44.886"N	104°51'24.961"W	0.01	
14304.00†	90.306	269.583	7002.93	8057.08	-612.42	-8035.50	40°24'44.879"N	104°51'26.254"W	0.01	
14404.00†	90.297	269.584	7002.41	8156.96	-613.15	-8135.49	40°24'44.871"N	104°51'27.547"W	0.01	



Planned Wellpath Report

BOST FARM 12N-11C-L (REV-C.0) PWP

Page 7 of 10



REFERENCE WELLPATH IDENTIFICATION

Operator	SRC ENERGY	Slot	SLOT#03 BOST FARM 12N-11C-L (2666'FSL & 1094'FWL, SEC.07)
Area	COLORADO	Well	BOST FARM 12N-11C-L
Field	WELD COUNTY (NAD83,TRUE NORTH)	Wellbore	BOST FARM 12N-11C-L PWB
Facility	SEC.07-T05N-R66W		

WELLPATH DATA (185 stations) † = interpolated/extrapolated station

MD [ft]	Inclination [°]	Azimuth [°]	TVD [ft]	Vert Sect [ft]	North [ft]	East [ft]	Latitude	Longitude	DLS [°/100ft]	Comments
14504.00†	90.287	269.585	7001.90	8256.84	-613.87	-8235.49	40°24'44.864"N	104°51'28.840"W	0.01	
14604.00†	90.278	269.586	7001.40	8356.73	-614.60	-8335.49	40°24'44.857"N	104°51'30.132"W	0.01	
14704.00†	90.269	269.586	7000.93	8456.61	-615.32	-8435.48	40°24'44.849"N	104°51'31.425"W	0.01	
14804.00†	90.260	269.587	7000.46	8556.49	-616.04	-8535.48	40°24'44.842"N	104°51'32.718"W	0.01	
14904.00†	90.251	269.588	7000.02	8656.38	-616.76	-8635.48	40°24'44.834"N	104°51'34.011"W	0.01	
15004.00†	90.242	269.589	6999.59	8756.26	-617.48	-8735.47	40°24'44.827"N	104°51'35.303"W	0.01	
15104.00†	90.233	269.589	6999.17	8856.14	-618.20	-8835.47	40°24'44.819"N	104°51'36.596"W	0.01	
15204.00†	90.224	269.590	6998.77	8956.03	-618.91	-8935.47	40°24'44.812"N	104°51'37.889"W	0.01	
15304.00†	90.214	269.591	6998.39	9055.91	-619.63	-9035.46	40°24'44.804"N	104°51'39.181"W	0.01	
15404.00†	90.205	269.592	6998.03	9155.79	-620.34	-9135.46	40°24'44.797"N	104°51'40.474"W	0.01	
15504.00†	90.196	269.593	6997.68	9255.67	-621.05	-9235.46	40°24'44.790"N	104°51'41.767"W	0.01	
15604.00†	90.187	269.593	6997.34	9355.56	-621.76	-9335.45	40°24'44.782"N	104°51'43.060"W	0.01	
15704.00†	90.178	269.594	6997.02	9455.44	-622.47	-9435.45	40°24'44.775"N	104°51'44.352"W	0.01	
15804.00†	90.169	269.595	6996.72	9555.32	-623.18	-9535.45	40°24'44.767"N	104°51'45.645"W	0.01	
15904.00†	90.160	269.596	6996.43	9655.21	-623.88	-9635.44	40°24'44.760"N	104°51'46.938"W	0.01	
16004.00†	90.150	269.596	6996.16	9755.09	-624.59	-9735.44	40°24'44.753"N	104°51'48.231"W	0.01	
16104.00†	90.141	269.597	6995.91	9854.97	-625.29	-9835.44	40°24'44.745"N	104°51'49.523"W	0.01	
16204.00†	90.132	269.598	6995.67	9954.85	-626.00	-9935.44	40°24'44.738"N	104°51'50.816"W	0.01	
16304.00†	90.123	269.599	6995.45	10054.74	-626.70	-10035.43	40°24'44.731"N	104°51'52.109"W	0.01	
16404.00†	90.114	269.599	6995.24	10154.62	-627.40	-10135.43	40°24'44.723"N	104°51'53.401"W	0.01	
16504.00†	90.105	269.600	6995.05	10254.50	-628.10	-10235.43	40°24'44.716"N	104°51'54.694"W	0.01	
16604.00†	90.096	269.601	6994.87	10354.38	-628.79	-10335.42	40°24'44.709"N	104°51'55.987"W	0.01	
16704.00†	90.087	269.602	6994.72	10454.27	-629.49	-10435.42	40°24'44.701"N	104°51'57.280"W	0.01	
16804.00†	90.077	269.602	6994.57	10554.15	-630.18	-10535.42	40°24'44.694"N	104°51'58.572"W	0.01	
16904.00†	90.068	269.603	6994.45	10654.03	-630.88	-10635.42	40°24'44.687"N	104°51'59.865"W	0.01	
17004.00†	90.059	269.604	6994.33	10753.91	-631.57	-10735.41	40°24'44.680"N	104°52'01.158"W	0.01	
17104.00†	90.050	269.605	6994.24	10853.80	-632.26	-10835.41	40°24'44.672"N	104°52'02.451"W	0.01	
17204.00†	90.041	269.606	6994.16	10953.68	-632.95	-10935.41	40°24'44.665"N	104°52'03.743"W	0.01	
17304.00†	90.032	269.606	6994.10	11053.56	-633.64	-11035.41	40°24'44.658"N	104°52'05.036"W	0.01	
17404.00†	90.023	269.607	6994.05	11153.44	-634.32	-11135.40	40°24'44.651"N	104°52'06.329"W	0.01	



Planned Wellpath Report

BOST FARM 12N-11C-L (REV-C.0) PWP

Page 8 of 10



REFERENCE WELLPATH IDENTIFICATION

Operator	SRC ENERGY	Slot	SLOT#03 BOST FARM 12N-11C-L (2666'FSL & 1094'FWL, SEC.07)
Area	COLORADO	Well	BOST FARM 12N-11C-L
Field	WELD COUNTY (NAD83,TRUE NORTH)	Wellbore	BOST FARM 12N-11C-L PWB
Facility	SEC.07-T05N-R66W		

WELLPATH DATA (185 stations) † = interpolated/extrapolated station

MD [ft]	Inclination [°]	Azimuth [°]	TVD [ft]	Vert Sect [ft]	North [ft]	East [ft]	Latitude	Longitude	DLS [°/100ft]	Comments
17504.00†	90.013	269.608	6994.02	11253.33	-635.01	-11235.40	40°24'44.643"N	104°52'07.622"W	0.01	
17604.00†	90.004	269.609	6994.00	11353.21	-635.69	-11335.40	40°24'44.636"N	104°52'08.914"W	0.01	
17651.65	90.000	269.609	6994.00 ²	11400.81	-636.02	-11383.05	40°24'44.633"N	104°52'09.530"W	0.01	End of 3D Arc
17704.00†	90.000	269.609	6994.00	11453.09	-636.37	-11435.40	40°24'44.629"N	104°52'10.207"W	0.00	
17751.63	90.000	269.609	6994.00 ³	11500.66	-636.70	-11483.02	40°24'44.626"N	104°52'10.823"W	0.00	End of Tangent

HOLE & CASING SECTIONS - Ref Wellbore: BOST FARM 12N-11C-L PWB Ref Wellpath: BOST FARM 12N-11C-L (REV-C.0) PWP

String/Diameter	Start MD [ft]	End MD [ft]	Interval [ft]	Start TVD [ft]	End TVD [ft]	Start N/S [ft]	Start E/W [ft]	End N/S [ft]	End E/W [ft]
13.5in Open Hole	4.00	1750.00	1746.00	4.00	1744.98	0.00	0.00	-50.59	-60.38
9.625in Casing Surface	4.00	1750.00	1746.00	4.00	1744.98	0.00	0.00	-50.59	-60.38
8.5in Open Hole	1750.00	17751.63	16001.63	1744.98	N/A	-50.59	-60.38	N/A	N/A



Planned Wellpath Report

BOST FARM 12N-11C-L (REV-C.0) PWP

Page 9 of 10



REFERENCE WELLPATH IDENTIFICATION

Operator	SRC ENERGY	Slot	SLOT#03 BOST FARM 12N-11C-L (2666'FSL & 1094'FWL, SEC.07)
Area	COLORADO	Well	BOST FARM 12N-11C-L
Field	WELD COUNTY (NAD83,TRUE NORTH)	Wellbore	BOST FARM 12N-11C-L PWB
Facility	SEC.07-T05N-R66W		

TARGETS

Name	MD [ft]	TVD [ft]	North [ft]	East [ft]	Grid East [US ft]	Grid North [US ft]	Latitude	Longitude	Shape
SEC.07-T05N-R66W		4.00	-115.12	164.31	3187161.59	1394309.79	40°24'49.806"N	104°49'40.249"W	polygon
SEC.11-T05N-R67W		4.00	-115.12	164.31	3187161.59	1394309.79	40°24'49.806"N	104°49'40.249"W	polygon
SEC.12-T05N-R67W		4.00	-115.12	164.31	3187161.59	1394309.79	40°24'49.806"N	104°49'40.249"W	polygon
BOST FARM 12N-11C-L BHL ON PLAT (2033'FSL & 360'FWL, SEC.11)		6986.00	-634.27	-11173.09	3175828.92	1393704.82	40°24'44.651"N	104°52'06.816"W	point
BOST FARM 12N-11C-L BPZ ON PLAT (2035'FSL & 460'FWL, SEC.11)		6986.00	-633.61	-11073.14	3175928.85	1393706.24	40°24'44.658"N	104°52'05.524"W	point
BOST FARM 12N-11C-L BHL REV-1 (2033'FSL & 360'FWL, SEC.11)		6994.00	-634.27	-11173.09	3175828.92	1393704.82	40°24'44.651"N	104°52'06.816"W	point
3) BOST FARM 12N-11C-L BHL REV-2 (2026'FSL & 50'FWL, SEC.11)	17751.63	6994.00	-636.70	-11483.02	3175519.02	1393700.04	40°24'44.626"N	104°52'10.823"W	point
BOST FARM 12N-11C-L BPZ REV-1 (2035'FSL & 460'FWL, SEC.11)		6994.00	-633.61	-11073.14	3175928.85	1393706.24	40°24'44.658"N	104°52'05.524"W	point
2) BOST FARM 12N-11C-L BPZ REV-2 (2028'FSL & 150'FWL, SEC.11)	17651.65	6994.00	-636.02	-11383.05	3175618.98	1393701.48	40°24'44.633"N	104°52'09.530"W	point
1) BOST FARM 12N-11C-L TOP OF PROD REV-1 (2100'FSL & 150'FEL, SEC.12)	7508.46	7076.00	-559.92	-1240.58	3185760.16	1393854.39	40°24'45.410"N	104°49'58.411"W	point
BOST FARM 12N-11C-L TOP OF PROD ON PLAT (2100'FSL & 150'FEL, SEC.12)		7166.00	-559.96	-1240.57	3185760.18	1393854.34	40°24'45.410"N	104°49'58.411"W	point



Planned Wellpath Report

BOST FARM 12N-11C-L (REV-C.0) PWP

Page 10 of 10

**BAKER
HUGHES**
a GE company



REFERENCE WELLPATH IDENTIFICATION			
Operator	SRC ENERGY	Slot	SLOT#03 BOST FARM 12N-11C-L (2666'FSL & 1094'FWL, SEC.07)
Area	COLORADO	Well	BOST FARM 12N-11C-L
Field	WELD COUNTY (NAD83,TRUE NORTH)	Wellbore	BOST FARM 12N-11C-L PWB
Facility	SEC.07-T05N-R66W		

SURVEY PROGRAM - Ref Wellbore: BOST FARM 12N-11C-L PWB Ref Wellpath: BOST FARM 12N-11C-L (REV-C.0) PWP				
Start MD [ft]	End MD [ft]	Positional Uncertainty Model	Log Name/Comment	Wellbore
4.00	1750.00	BHI NaviTrak (Axial)		BOST FARM 12N-11C-L PWB
1750.00	17751.63	BHI AutoTrak Curve (MagCAD+IFR1, Short spacing)		BOST FARM 12N-11C-L PWB