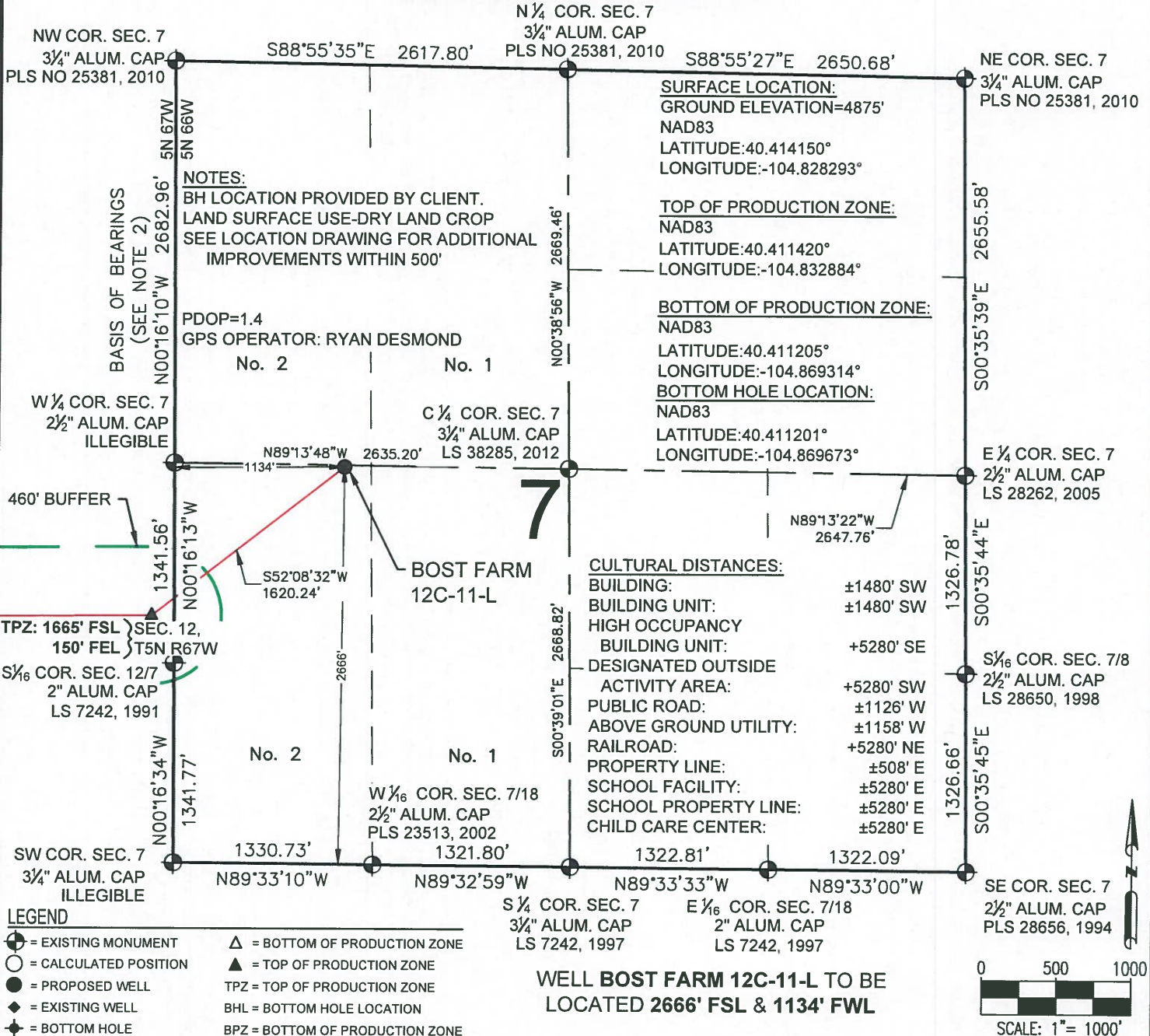
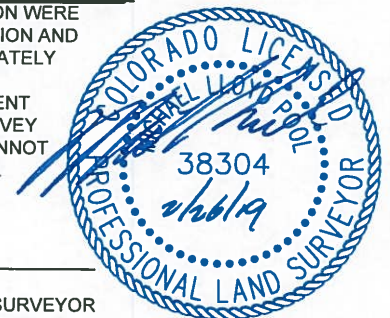


BOST FARM 12C-11-L WELL LOCATION CERTIFICATE



I, MICHAEL L. POOL, A LICENSED PROFESSIONAL LAND SURVEYOR IN THE STATE OF COLORADO DO HEREBY CERTIFY TO **SRC ENERGY, INC.** THAT THE SURVEY AND WELL LOCATION CERTIFICATE SHOWN HEREON WERE DONE BY ME OR UNDER MY DIRECT SUPERVISION AND THAT THE DRAWING SHOWN HEREON ACCURATELY DEPICTS THE PROPOSED LOCATION OF THE WELL. THIS CERTIFICATE DOES NOT REPRESENT A LAND SURVEY PLAT OR IMPROVEMENT SURVEY PLAT AS DEFINED BY C.R.S. 38-51-102 AND CANNOT BE RELIED UPON TO DETERMINE OWNERSHIP.



MICHAEL L. POOL, PLS 38304
COLORADO LICENSED PROFESSIONAL LAND SURVEYOR
FOR AND ON BEHALF OF P.F.S., LLC

SHEET 1 OF 3



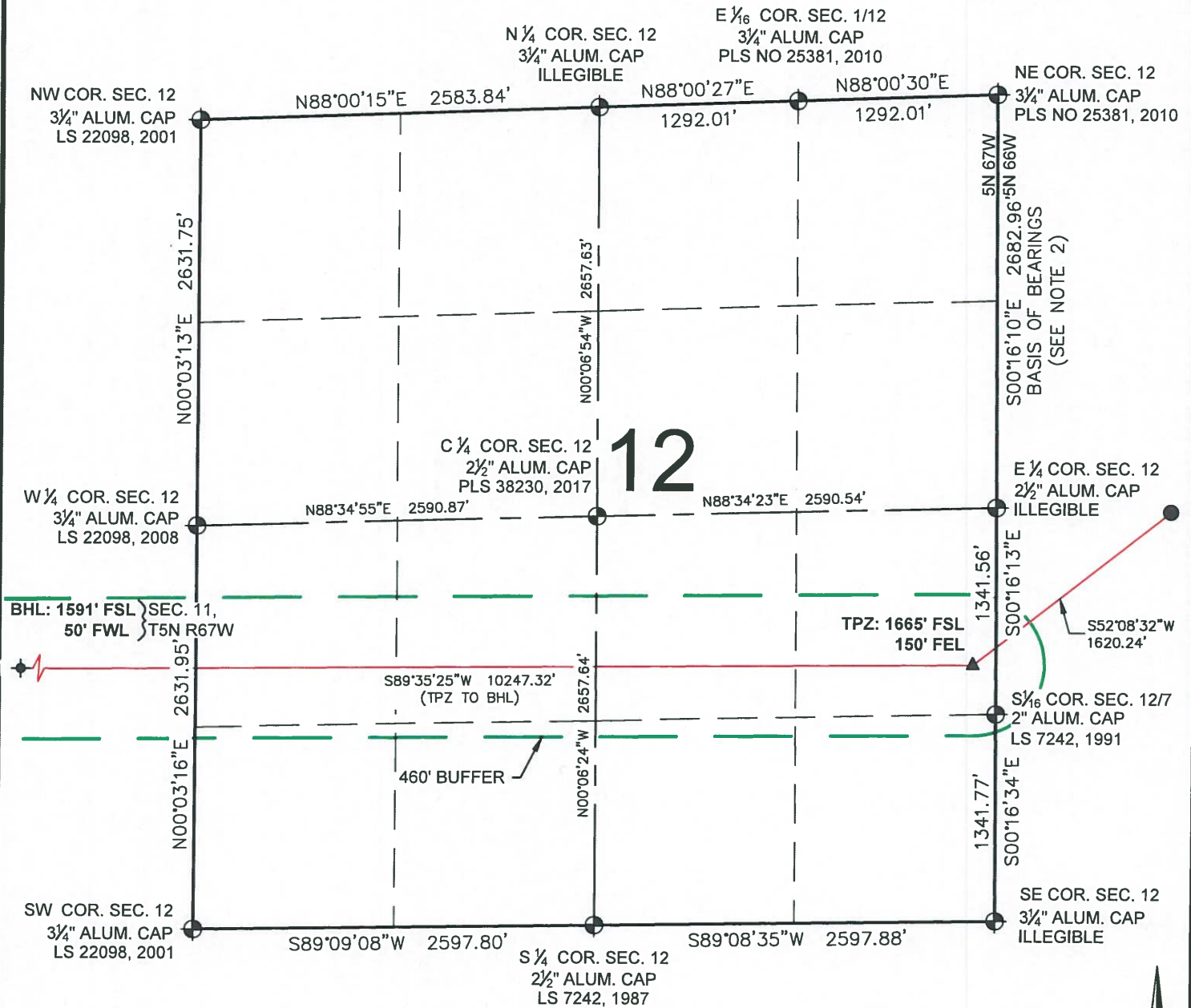
FIELD DATE: 08-09-18	WELL NAME: BOST FARM 12C-11-L
DRAWING DATE: 02-26-19	SURFACE LOCATION: LOT 2 SW 1/4 SEC. 7, T5N, R66W, 6TH P.M.
BY: JAG	CHECKED BY: IJM
WELD COUNTY, COLORADO	

PREPARED FOR:



SRC ENERGY

BOST FARM 12C-11-L WELL LOCATION CERTIFICATE



LEGEND

- = EXISTING MONUMENT ▲ = BOTTOM OF PRODUCTION ZONE
- = CALCULATED POSITION ▲ = TOP OF PRODUCTION ZONE
- = PROPOSED WELL
- ◆ = EXISTING WELL
- ◆ = BOTTOM HOLE
- TPZ = TOP OF PRODUCTION ZONE
- BHL = BOTTOM HOLE LOCATION
- BPZ = BOTTOM OF PRODUCTION ZONE

MICHAEL L. POOL, PLS 38304
COLORADO LICENSED PROFESSIONAL LAND SURVEYOR
FOR AND ON BEHALF OF P.F.S., LLC



SHEET 2 OF 3

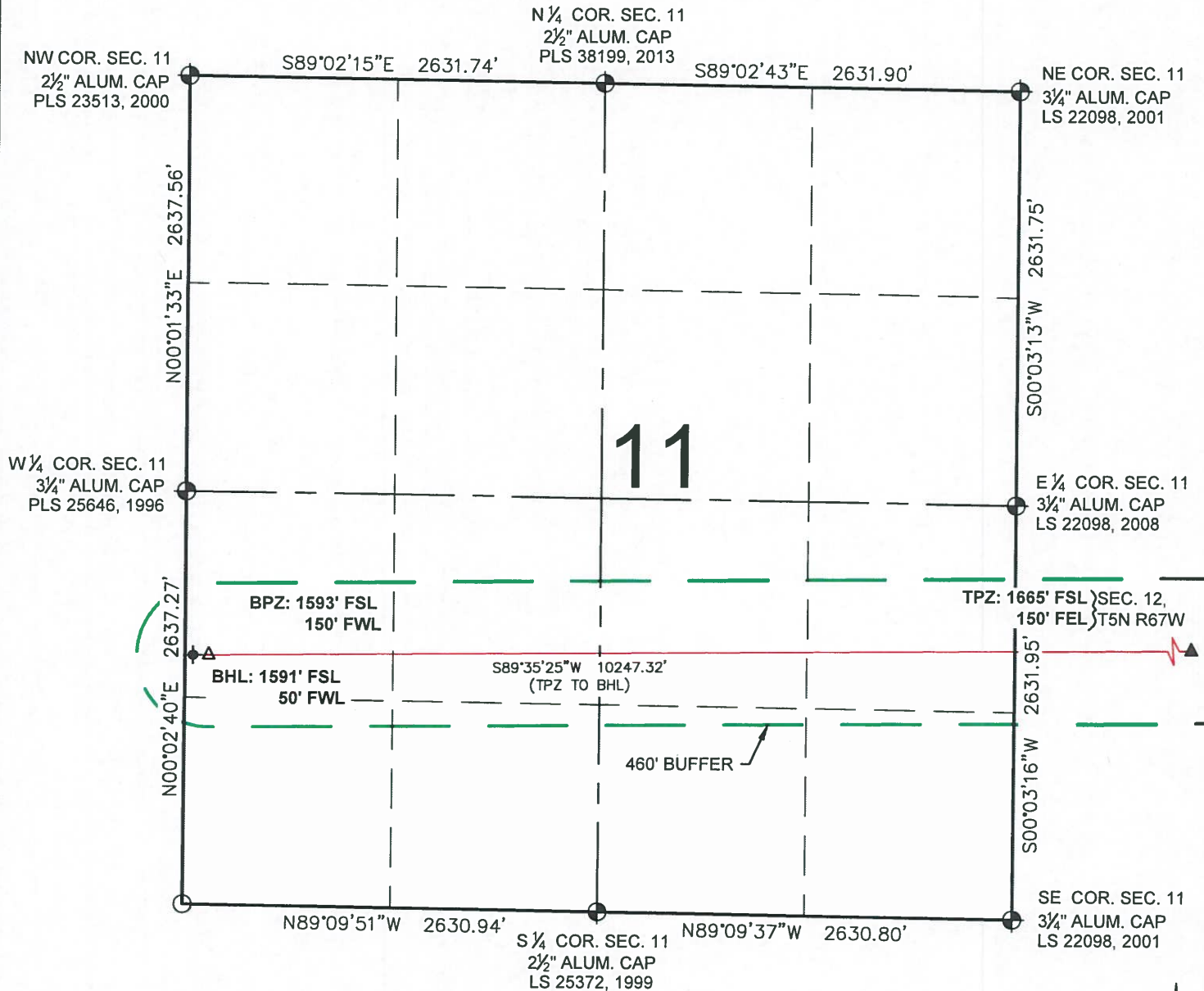


FIELD DATE: 08-09-18	WELL NAME: BOST FARM 12C-11-L
DRAWING DATE: 02-26-19	SURFACE LOCATION: LOT 2 SW 1/4 SEC. 7, T5N, R66W, 6TH P.M. WELD COUNTY, COLORADO
BY: JAG	CHECKED BY: IJM

PREPARED FOR:



BOST FARM 12C-11-L WELL LOCATION CERTIFICATE



LEGEND

- = EXISTING MONUMENT
- = CALCULATED POSITION
- = PROPOSED WELL
- ◆ = EXISTING WELL
- ⬢ = BOTTOM HOLE
- ▲ = BOTTOM OF PRODUCTION ZONE
- ▲ = TOP OF PRODUCTION ZONE
- TPZ = TOP OF PRODUCTION ZONE
- BHL = BOTTOM HOLE LOCATION
- BPZ = BOTTOM OF PRODUCTION ZONE

MICHAEL L. POOL, PLS 38304
COLORADO LICENSED PROFESSIONAL LAND SURVEYOR
FOR AND ON BEHALF OF P.F.S., LLC



SHEET 3 OF 3



FIELD DATE: 08-09-18	WELL NAME: BOST FARM 12C-11-L
DRAWING DATE: 02-26-19	SURFACE LOCATION: LOT 2 SW 1/4 SEC. 7, T5N, R66W, 6TH P.M. WELD COUNTY, COLORADO
BY: JAG	CHECKED BY: IJM

