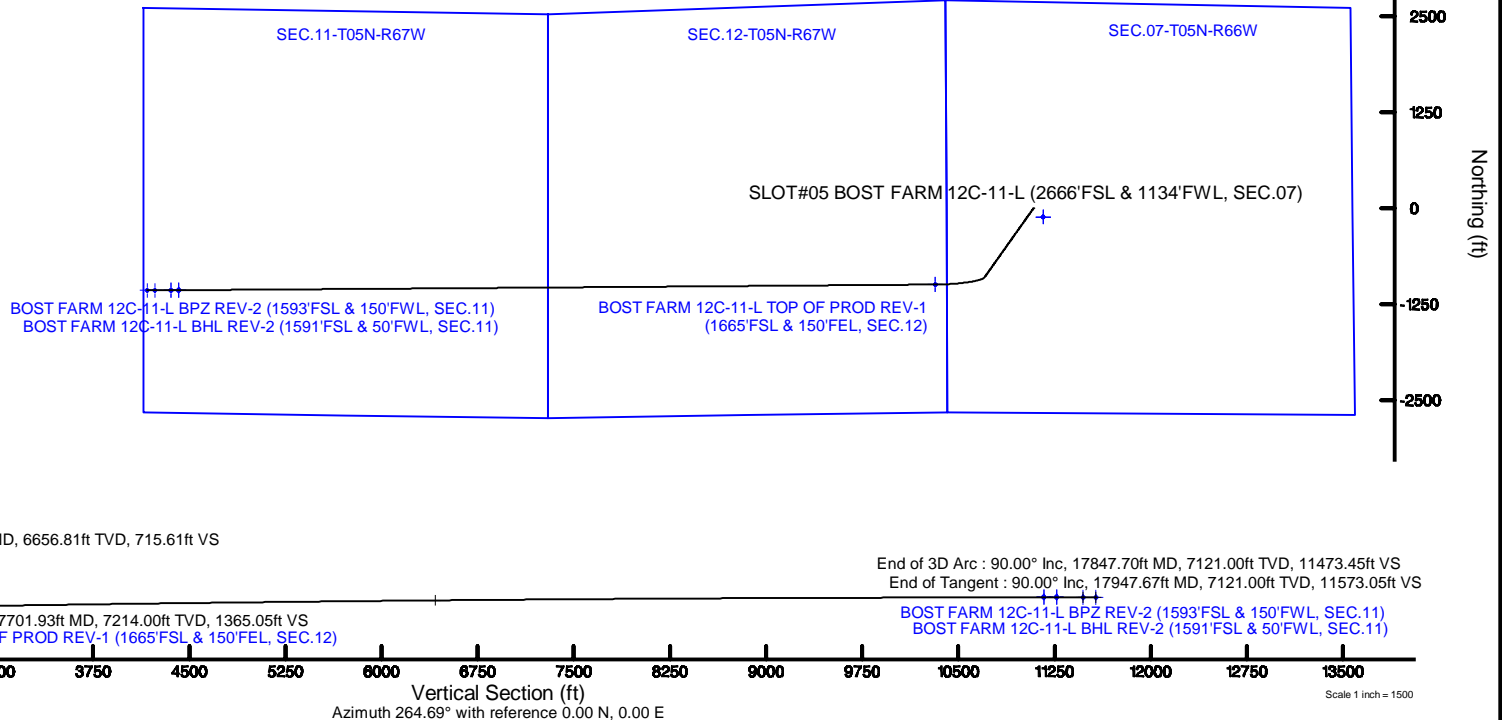
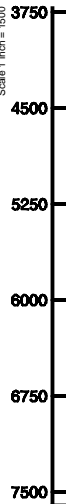


Location:	COLORADO	Slot:	SLOT#05 BOST FARM 12C-11-L (2666FSL & 1134FWL, SEC.07)
Field:	WELD COUNTY (NAD83,TRUE NORTH)	Well:	BOST FARM 12C-11-L
Facility:	SEC.07-T05N-R66W	Wellbore:	BOST FARM 12C-11-L PWB
Plot reference wellpath is BOST FARM 12C-11-L (REV-C.0) PWP		Grid System: NAD83 / Lambert Colorado SP, Northern Zone (501), US feet	
True vertical depths are referenced to IKON 12 (4) (RKB)		North Reference: True north	
Measured depths are referenced to IKON 12 (4) (RKB)		Scale: True distance	
IKON 12 (4) (RKB) to Mean Sea Level: 4875 feet		Depths are in feet	
Mean Sea Level to Mud line (At Slot: SLOT#05 BOST FARM 12C-11-L (2666FSL & 1134FWL, SEC.07): 0 feet		Created by: haniisab on 2019-01-03	
Coordinates are in feet referenced to Slot		Database: WA DENVER	

Facility Name				Grid East (US ft)	Grid North (US ft)	Latitude	Longitude
SEC.07-T05N-R66W				3187161.591	1394305.789	40°24'49.806"N	104°49'40.249"W
Slot	Local N (ft)	Local E (ft)	Grid East (US ft)	Grid North (US ft)	Latitude	Longitude	
SLOT#05 BOST FARM 12C-11-L (2666FSL & 1134FWL, SEC.07)	114.76	-124.21	3187036.520	1394423.598	40°24'50.840"N	104°49'41.855"W	
KON 12 (4) (RKB) to Mud line (N Slot SLOT#05 BOST FARM 12C-11-L (2666FSL & 1134FWL, SEC.07))						4879r	
Mean Sea Level to Mud line (N Slot SLOT#05 BOST FARM 12C-11-L (2666FSL & 1134FWL, SEC.07))						0r	
KON 12 (4) (RKB) to Mean Sea Level						4879r	

Start MD (ft)	End MD (ft)	Tool	Model	Log Name/Comment	Wellbore
4.00	1750.00	BHI NavTrak	BHI NavTrak (Axial)		BOST FARM 12C-11-L PWB
1750.00	17947.67	BHI AutoTrak Curve	BHI AutoTrak Curve (MagCAD+IFR1, Short spacing)		BOST FARM 12C-11-L PWB



# BOST FARM 12C-11-L (REV-C.0) LAS.las

## ~VERSION INFORMATION

VERS. 2.0 : CWLS LOG ASCII STANDARD-VERSION 2.0

WRAP. NO : ASCII DATA SECTION CONTAINS ONE ROW PER WELLPATH STATION

## ~WELL INFORMATION

#MNEM	.UNITS	DATA	:DESCRIPTION
#----	.-----	----	:-----
STRT	.ft	0.00	:START MD
STOP	.ft	17947.67	:STOP MD
STEP	.ft	0.0	:STEP (non-uniform increment)
NULL	.	-999.99	:NULL
COMP	.	SRC ENERGY	:OPERATOR
WELL	.	BOST FARM 12C-11-L	:WELL
FLD	.	WELD COUNTY (NAD83,TRUE NORTH)	:FIELD
LOC	.	COLORADO	:AREA (aka: Location)
CNTY	.	N/A	:COUNTY
STAT	.	N/A	:STATE
CTRY	.	N/A	:COUNTRY
SRVC	.	Baker Hughes	:CONTRACTOR
DATE	.	09/24/2018	:LOG REV DATE
API	.		:API NUMBER

## ~OTHER INFORMATION

#Software: WellArchitect(R) Version 5.1

#MNEM	.UNITS	DATA	:DESCRIPTION
#----	.-----	----	:-----
WPTYPE	.	PLANNED WELLPATH	:WELLPATH TYPE
FACILITY	.	SEC.07-T05N-R66W	:FACILITY
SLOT	.	SLOT#05 BOST FARM 12C-11-L (2666'FSL & 1134'FWL, SEC.07):	SLOT
WELLBORE	.	BOST FARM 12C-11-L PWB	:WELLBORE
WELLPATH	.	BOST FARM 12C-11-L (REV-C.0) PWP	:WELLPATH
MDREFPT	.	IKON 12 (4') (RKB)	:MD REFERENCE POINT
TVDREFPT	.	IKON 12 (4') (RKB)	:TVD REFERENCE POINT
LCLREFPT	.	Slot	:LOCAL COORDINATE REFERENCE PT

BOST FARM 12C-11-L (REV-C.0) LAS.las

VSAZIMUTH.deg	264.69	:VERTICAL SECTION AZIMUTH
VSORIGN .ft	0.00	:VERTICAL SECTION ORIGIN NORTH
VSORIGE .ft	0.00	:VERTICAL SECTION ORIGIN EAST

~CURVE (WELLPATH) INFORMATION

#MNEM	.UNITS	:DESCRIPTION
#----	.-----	:-----
DEPT	.ft	:MEASURED DEPTH
INC	.deg	:INCLINATION
AZI	.deg	:AZIMUTH
TVD	.ft	:TRUE VERTICAL DEPTH
SECT	.ft	:CROSS SECTION (CURTAIN/VERTICAL)
LOCALN	.ft	:LOCAL NORTH
LOCALE	.ft	:LOCAL EAST
LAT	.deg	:LATITUDE
LONG	.deg	:LONGITUDE
DLS	.deg/100ft	:DOGLEG SEVERITY

~ASCII DATA

0.00	0.00	215.26	0.00	0.00	0.00	0.00	40.4141500	-104.8282930	0.00
4.00	0.00	215.26	4.00	0.00	0.00	0.00	40.4141500	-104.8282930	0.00
104.00	0.00	215.26	104.00	0.00	0.00	0.00	40.4141500	-104.8282930	0.00
204.00	0.00	215.26	204.00	0.00	0.00	0.00	40.4141500	-104.8282930	0.00
304.00	0.00	215.26	304.00	0.00	0.00	0.00	40.4141500	-104.8282930	0.00
404.00	0.00	215.26	404.00	0.00	0.00	0.00	40.4141500	-104.8282930	0.00
504.00	0.00	215.26	504.00	0.00	0.00	0.00	40.4141500	-104.8282930	0.00
604.00	0.00	215.26	604.00	0.00	0.00	0.00	40.4141500	-104.8282930	0.00
704.00	0.00	215.26	704.00	0.00	0.00	0.00	40.4141500	-104.8282930	0.00
800.00	0.00	215.26	800.00	0.00	0.00	0.00	40.4141500	-104.8282930	0.00
804.00	0.08	215.26	804.00	0.00	0.00	0.00	40.4141500	-104.8282930	2.00
904.00	2.08	215.26	903.98	1.23	-1.54	-1.09	40.4141458	-104.8282969	2.00
1004.00	4.08	215.26	1003.83	4.72	-5.93	-4.19	40.4141337	-104.8283081	2.00
1104.00	6.08	215.26	1103.43	10.48	-13.16	-9.30	40.4141139	-104.8283264	2.00
1204.00	8.08	215.26	1202.66	18.50	-23.22	-16.42	40.4140863	-104.8283520	2.00

BOST FARM 12C-11-L (REV-C.0) LAS.las

1304.00	10.08	215.26	1301.40	28.76	-36.11	-25.53	40.4140509	-104.8283847	2.00
1357.98	11.16	215.26	1354.46	35.23	-44.23	-31.27	40.4140286	-104.8284053	2.00
1404.00	11.16	215.26	1399.61	41.03	-51.50	-36.41	40.4140086	-104.8284238	0.00
1504.00	11.16	215.26	1497.72	53.62	-67.30	-47.59	40.4139653	-104.8284639	0.00
1604.00	11.16	215.26	1595.83	66.21	-83.11	-58.76	40.4139219	-104.8285040	0.00
1704.00	11.16	215.26	1693.94	78.79	-98.91	-69.94	40.4138785	-104.8285441	0.00
1804.00	11.16	215.26	1792.05	91.38	-114.71	-81.11	40.4138351	-104.8285843	0.00
1904.00	11.16	215.26	1890.15	103.97	-130.52	-92.28	40.4137917	-104.8286244	0.00
2004.00	11.16	215.26	1988.26	116.56	-146.32	-103.46	40.4137484	-104.8286645	0.00
2104.00	11.16	215.26	2086.37	129.15	-162.12	-114.63	40.4137050	-104.8287046	0.00
2204.00	11.16	215.26	2184.48	141.74	-177.93	-125.80	40.4136616	-104.8287448	0.00
2304.00	11.16	215.26	2282.59	154.33	-193.73	-136.98	40.4136182	-104.8287849	0.00
2404.00	11.16	215.26	2380.70	166.92	-209.53	-148.15	40.4135749	-104.8288250	0.00
2504.00	11.16	215.26	2478.81	179.51	-225.33	-159.32	40.4135315	-104.8288652	0.00
2604.00	11.16	215.26	2576.92	192.10	-241.14	-170.50	40.4134881	-104.8289053	0.00
2704.00	11.16	215.26	2675.03	204.68	-256.94	-181.67	40.4134447	-104.8289454	0.00
2804.00	11.16	215.26	2773.14	217.27	-272.74	-192.85	40.4134013	-104.8289855	0.00
2904.00	11.16	215.26	2871.25	229.86	-288.55	-204.02	40.4133580	-104.8290257	0.00
3004.00	11.16	215.26	2969.36	242.45	-304.35	-215.19	40.4133146	-104.8290658	0.00
3104.00	11.16	215.26	3067.46	255.04	-320.15	-226.37	40.4132712	-104.8291059	0.00
3204.00	11.16	215.26	3165.57	267.63	-335.96	-237.54	40.4132278	-104.8291460	0.00
3304.00	11.16	215.26	3263.68	280.22	-351.76	-248.71	40.4131845	-104.8291862	0.00
3404.00	11.16	215.26	3361.79	292.81	-367.56	-259.89	40.4131411	-104.8292263	0.00
3504.00	11.16	215.26	3459.90	305.40	-383.37	-271.06	40.4130977	-104.8292664	0.00
3604.00	11.16	215.26	3558.01	317.99	-399.17	-282.24	40.4130543	-104.8293065	0.00
3704.00	11.16	215.26	3656.12	330.57	-414.97	-293.41	40.4130109	-104.8293467	0.00
3804.00	11.16	215.26	3754.23	343.16	-430.77	-304.58	40.4129676	-104.8293868	0.00
3904.00	11.16	215.26	3852.34	355.75	-446.58	-315.76	40.4129242	-104.8294269	0.00
4004.00	11.16	215.26	3950.45	368.34	-462.38	-326.93	40.4128808	-104.8294670	0.00
4104.00	11.16	215.26	4048.56	380.93	-478.18	-338.10	40.4128374	-104.8295072	0.00
4204.00	11.16	215.26	4146.67	393.52	-493.99	-349.28	40.4127941	-104.8295473	0.00
4304.00	11.16	215.26	4244.78	406.11	-509.79	-360.45	40.4127507	-104.8295874	0.00
4404.00	11.16	215.26	4342.88	418.70	-525.59	-371.62	40.4127073	-104.8296275	0.00
4504.00	11.16	215.26	4440.99	431.29	-541.40	-382.80	40.4126639	-104.8296676	0.00

BOST FARM 12C-11-L (REV-C.0) LAS.las

4604.00	11.16	215.26	4539.10	443.88	-557.20	-393.97	40.4126205	-104.8297078	0.00
4704.00	11.16	215.26	4637.21	456.46	-573.00	-405.15	40.4125772	-104.8297479	0.00
4804.00	11.16	215.26	4735.32	469.05	-588.80	-416.32	40.4125338	-104.8297880	0.00
4904.00	11.16	215.26	4833.43	481.64	-604.61	-427.49	40.4124904	-104.8298281	0.00
5004.00	11.16	215.26	4931.54	494.23	-620.41	-438.67	40.4124470	-104.8298683	0.00
5104.00	11.16	215.26	5029.65	506.82	-636.21	-449.84	40.4124037	-104.8299084	0.00
5204.00	11.16	215.26	5127.76	519.41	-652.02	-461.01	40.4123603	-104.8299485	0.00
5304.00	11.16	215.26	5225.87	532.00	-667.82	-472.19	40.4123169	-104.8299886	0.00
5404.00	11.16	215.26	5323.98	544.59	-683.62	-483.36	40.4122735	-104.8300288	0.00
5504.00	11.16	215.26	5422.09	557.18	-699.43	-494.53	40.4122301	-104.8300689	0.00
5604.00	11.16	215.26	5520.19	569.77	-715.23	-505.71	40.4121868	-104.8301090	0.00
5704.00	11.16	215.26	5618.30	582.35	-731.03	-516.88	40.4121434	-104.8301491	0.00
5804.00	11.16	215.26	5716.41	594.94	-746.83	-528.06	40.4121000	-104.8301893	0.00
5904.00	11.16	215.26	5814.52	607.53	-762.64	-539.23	40.4120566	-104.8302294	0.00
6004.00	11.16	215.26	5912.63	620.12	-778.44	-550.40	40.4120132	-104.8302695	0.00
6104.00	11.16	215.26	6010.74	632.71	-794.24	-561.58	40.4119699	-104.8303096	0.00
6204.00	11.16	215.26	6108.85	645.30	-810.05	-572.75	40.4119265	-104.8303498	0.00
6304.00	11.16	215.26	6206.96	657.89	-825.85	-583.92	40.4118831	-104.8303899	0.00
6404.00	11.16	215.26	6305.07	670.48	-841.65	-595.10	40.4118397	-104.8304300	0.00
6504.00	11.16	215.26	6403.18	683.07	-857.46	-606.27	40.4117964	-104.8304701	0.00
6604.00	11.16	215.26	6501.29	695.66	-873.26	-617.44	40.4117530	-104.8305102	0.00
6704.00	11.16	215.26	6599.40	708.25	-889.06	-628.62	40.4117096	-104.8305504	0.00
6762.52	11.16	215.26	6656.81	715.61	-898.31	-635.16	40.4116842	-104.8305739	0.00
6804.00	13.66	228.25	6697.32	722.17	-904.85	-641.13	40.4116663	-104.8305953	9.00
6904.00	21.21	245.04	6792.72	748.76	-920.38	-666.39	40.4116236	-104.8306860	9.00
7004.00	29.56	252.99	6883.01	790.03	-935.25	-706.46	40.4115828	-104.8308299	9.00
7104.00	38.18	257.64	6965.98	844.97	-949.12	-760.35	40.4115447	-104.8310234	9.00
7204.00	46.93	260.77	7039.57	912.23	-961.62	-826.74	40.4115104	-104.8312618	9.00
7304.00	55.75	263.11	7101.99	990.14	-972.46	-903.98	40.4114807	-104.8315392	9.00
7404.00	64.60	265.01	7151.68	1076.80	-981.36	-990.18	40.4114562	-104.8318487	9.00
7504.00	73.47	266.64	7187.44	1170.06	-988.11	-1083.21	40.4114377	-104.8321828	9.00
7604.00	82.35	268.13	7208.37	1267.63	-992.55	-1180.79	40.4114255	-104.8325332	9.00
7701.93	91.05	269.53	7214.00	1365.05	-994.54	-1278.45	40.4114200	-104.8328839	9.00
7704.00	91.05	269.53	7213.96	1367.11	-994.56	-1280.51	40.4114200	-104.8328913	0.01

BOST FARM 12C-11-L (REV-C.0) LAS.las

7804.00	91.04	269.53	7212.14	1466.74	-995.38	-1380.49	40.4114177	-104.8332503	0.01
7904.00	91.03	269.53	7210.33	1566.36	-996.20	-1480.47	40.4114154	-104.8336094	0.01
8004.00	91.02	269.53	7208.54	1665.99	-997.03	-1580.45	40.4114131	-104.8339684	0.01
8104.00	91.01	269.53	7206.78	1765.62	-997.85	-1680.44	40.4114109	-104.8343274	0.01
8204.00	91.00	269.53	7205.02	1865.24	-998.66	-1780.42	40.4114086	-104.8346865	0.01
8304.00	90.99	269.53	7203.29	1964.87	-999.48	-1880.40	40.4114063	-104.8350455	0.01
8404.00	90.98	269.53	7201.57	2064.50	-1000.30	-1980.38	40.4114041	-104.8354045	0.01
8504.00	90.97	269.53	7199.88	2164.13	-1001.11	-2080.36	40.4114018	-104.8357636	0.01
8604.00	90.96	269.54	7198.20	2263.76	-1001.92	-2180.35	40.4113996	-104.8361226	0.01
8704.00	90.95	269.54	7196.54	2363.38	-1002.73	-2280.33	40.4113973	-104.8364816	0.01
8804.00	90.94	269.54	7194.89	2463.01	-1003.54	-2380.31	40.4113951	-104.8368407	0.01
8904.00	90.93	269.54	7193.27	2562.64	-1004.35	-2480.30	40.4113928	-104.8371997	0.01
9004.00	90.92	269.54	7191.66	2662.27	-1005.16	-2580.28	40.4113906	-104.8375587	0.01
9104.00	90.91	269.54	7190.07	2761.90	-1005.96	-2680.26	40.4113883	-104.8379178	0.01
9204.00	90.90	269.54	7188.50	2861.53	-1006.77	-2780.25	40.4113861	-104.8382768	0.01
9304.00	90.89	269.54	7186.95	2961.16	-1007.57	-2880.23	40.4113839	-104.8386359	0.01
9404.00	90.87	269.54	7185.41	3060.79	-1008.37	-2980.22	40.4113816	-104.8389949	0.01
9504.00	90.86	269.54	7183.90	3160.42	-1009.17	-3080.20	40.4113794	-104.8393540	0.01
9604.00	90.85	269.54	7182.40	3260.05	-1009.97	-3180.19	40.4113772	-104.8397130	0.01
9704.00	90.84	269.54	7180.92	3359.68	-1010.77	-3280.17	40.4113749	-104.8400721	0.01
9804.00	90.83	269.54	7179.46	3459.31	-1011.56	-3380.16	40.4113727	-104.8404311	0.01
9904.00	90.82	269.55	7178.01	3558.94	-1012.36	-3480.15	40.4113705	-104.8407902	0.01
10004.00	90.81	269.55	7176.59	3658.57	-1013.15	-3580.13	40.4113683	-104.8411492	0.01
10104.00	90.80	269.55	7175.18	3758.20	-1013.94	-3680.12	40.4113661	-104.8415083	0.01
10204.00	90.79	269.55	7173.79	3857.83	-1014.73	-3780.11	40.4113639	-104.8418673	0.01
10304.00	90.78	269.55	7172.41	3957.46	-1015.52	-3880.10	40.4113617	-104.8422264	0.01
10404.00	90.77	269.55	7171.06	4057.09	-1016.31	-3980.08	40.4113595	-104.8425854	0.01
10504.00	90.76	269.55	7169.72	4156.72	-1017.10	-4080.07	40.4113573	-104.8429445	0.01
10604.00	90.75	269.55	7168.41	4256.36	-1017.88	-4180.06	40.4113551	-104.8433035	0.01
10704.00	90.74	269.55	7167.11	4355.99	-1018.66	-4280.05	40.4113529	-104.8436626	0.01
10804.00	90.73	269.55	7165.83	4455.62	-1019.45	-4380.04	40.4113507	-104.8440216	0.01
10904.00	90.72	269.55	7164.56	4555.25	-1020.23	-4480.03	40.4113485	-104.8443807	0.01
11004.00	90.71	269.55	7163.32	4654.88	-1021.01	-4580.01	40.4113463	-104.8447398	0.01
11104.00	90.70	269.56	7162.09	4754.51	-1021.78	-4680.00	40.4113441	-104.8450988	0.01

BOST FARM 12C-11-L (REV-C.0) LAS.las

11204.00	90.69	269.56	7160.88	4854.15	-1022.56	-4779.99	40.4113419	-104.8454579	0.01
11304.00	90.68	269.56	7159.69	4953.78	-1023.33	-4879.98	40.4113397	-104.8458169	0.01
11404.00	90.67	269.56	7158.51	5053.41	-1024.11	-4979.97	40.4113376	-104.8461760	0.01
11504.00	90.66	269.56	7157.36	5153.04	-1024.88	-5079.96	40.4113354	-104.8465351	0.01
11604.00	90.65	269.56	7156.22	5252.67	-1025.65	-5179.95	40.4113332	-104.8468941	0.01
11704.00	90.64	269.56	7155.10	5352.31	-1026.42	-5279.95	40.4113310	-104.8472532	0.01
11804.00	90.63	269.56	7154.00	5451.94	-1027.19	-5379.94	40.4113289	-104.8476123	0.01
11904.00	90.62	269.56	7152.92	5551.57	-1027.95	-5479.93	40.4113267	-104.8479713	0.01
12004.00	90.61	269.56	7151.85	5651.20	-1028.72	-5579.92	40.4113245	-104.8483304	0.01
12104.00	90.60	269.56	7150.81	5750.84	-1029.48	-5679.91	40.4113224	-104.8486895	0.01
12204.00	90.58	269.56	7149.78	5850.47	-1030.24	-5779.90	40.4113202	-104.8490485	0.01
12304.00	90.57	269.56	7148.77	5950.10	-1031.01	-5879.89	40.4113181	-104.8494076	0.01
12404.00	90.56	269.57	7147.77	6049.73	-1031.76	-5979.89	40.4113159	-104.8497667	0.01
12504.00	90.55	269.57	7146.80	6149.37	-1032.52	-6079.88	40.4113138	-104.8501257	0.01
12604.00	90.54	269.57	7145.84	6249.00	-1033.28	-6179.87	40.4113116	-104.8504848	0.01
12704.00	90.53	269.57	7144.90	6348.63	-1034.03	-6279.86	40.4113095	-104.8508439	0.01
12804.00	90.52	269.57	7143.98	6448.27	-1034.79	-6379.86	40.4113074	-104.8512030	0.01
12904.00	90.51	269.57	7143.08	6547.90	-1035.54	-6479.85	40.4113052	-104.8515620	0.01
13004.00	90.50	269.57	7142.20	6647.53	-1036.29	-6579.84	40.4113031	-104.8519211	0.01
13104.00	90.49	269.57	7141.33	6747.17	-1037.04	-6679.84	40.4113010	-104.8522802	0.01
13204.00	90.48	269.57	7140.48	6846.80	-1037.79	-6779.83	40.4112988	-104.8526392	0.01
13304.00	90.47	269.57	7139.65	6946.43	-1038.54	-6879.82	40.4112967	-104.8529983	0.01
13404.00	90.46	269.57	7138.84	7046.07	-1039.28	-6979.82	40.4112946	-104.8533574	0.01
13504.00	90.45	269.57	7138.05	7145.70	-1040.03	-7079.81	40.4112925	-104.8537165	0.01
13604.00	90.44	269.58	7137.27	7245.33	-1040.77	-7179.81	40.4112903	-104.8540756	0.01
13704.00	90.43	269.58	7136.51	7344.97	-1041.51	-7279.80	40.4112882	-104.8544346	0.01
13804.00	90.42	269.58	7135.77	7444.60	-1042.25	-7379.80	40.4112861	-104.8547937	0.01
13904.00	90.41	269.58	7135.05	7544.23	-1042.99	-7479.79	40.4112840	-104.8551528	0.01
14004.00	90.40	269.58	7134.35	7643.87	-1043.72	-7579.78	40.4112819	-104.8555119	0.01
14104.00	90.39	269.58	7133.66	7743.50	-1044.46	-7679.78	40.4112798	-104.8558709	0.01
14204.00	90.38	269.58	7133.00	7843.13	-1045.19	-7779.77	40.4112777	-104.8562300	0.01
14304.00	90.37	269.58	7132.35	7942.77	-1045.93	-7879.77	40.4112756	-104.8565891	0.01
14404.00	90.36	269.58	7131.71	8042.40	-1046.66	-7979.77	40.4112735	-104.8569482	0.01
14504.00	90.35	269.58	7131.10	8142.03	-1047.39	-8079.76	40.4112714	-104.8573073	0.01

BOST FARM 12C-11-L (REV-C.0) LAS.las

14604.00	90.34	269.58	7130.51	8241.67	-1048.12	-8179.76	40.4112693	-104.8576663	0.01
14704.00	90.33	269.58	7129.93	8341.30	-1048.84	-8279.75	40.4112672	-104.8580254	0.01
14804.00	90.32	269.58	7129.37	8440.93	-1049.57	-8379.75	40.4112651	-104.8583845	0.01
14904.00	90.31	269.58	7128.83	8540.57	-1050.29	-8479.74	40.4112631	-104.8587436	0.01
15004.00	90.29	269.59	7128.31	8640.20	-1051.02	-8579.74	40.4112610	-104.8591027	0.01
15104.00	90.28	269.59	7127.80	8739.83	-1051.74	-8679.74	40.4112589	-104.8594618	0.01
15204.00	90.27	269.59	7127.31	8839.47	-1052.46	-8779.73	40.4112568	-104.8598208	0.01
15304.00	90.26	269.59	7126.85	8939.10	-1053.18	-8879.73	40.4112548	-104.8601799	0.01
15404.00	90.25	269.59	7126.40	9038.73	-1053.89	-8979.72	40.4112527	-104.8605390	0.01
15504.00	90.24	269.59	7125.96	9138.37	-1054.61	-9079.72	40.4112506	-104.8608981	0.01
15604.00	90.23	269.59	7125.55	9238.00	-1055.32	-9179.72	40.4112486	-104.8612572	0.01
15704.00	90.22	269.59	7125.15	9337.63	-1056.04	-9279.71	40.4112465	-104.8616163	0.01
15804.00	90.21	269.59	7124.77	9437.27	-1056.75	-9379.71	40.4112444	-104.8619753	0.01
15904.00	90.20	269.59	7124.41	9536.90	-1057.46	-9479.71	40.4112424	-104.8623344	0.01
16004.00	90.19	269.59	7124.07	9636.53	-1058.17	-9579.71	40.4112403	-104.8626935	0.01
16104.00	90.18	269.60	7123.75	9736.16	-1058.88	-9679.70	40.4112383	-104.8630526	0.01
16204.00	90.17	269.60	7123.44	9835.80	-1059.58	-9779.70	40.4112362	-104.8634117	0.01
16304.00	90.16	269.60	7123.15	9935.43	-1060.29	-9879.70	40.4112342	-104.8637708	0.01
16404.00	90.15	269.60	7122.88	10035.06	-1060.99	-9979.69	40.4112322	-104.8641299	0.01
16504.00	90.14	269.60	7122.63	10134.69	-1061.69	-10079.69	40.4112301	-104.8644889	0.01
16604.00	90.13	269.60	7122.40	10234.33	-1062.39	-10179.69	40.4112281	-104.8648480	0.01
16704.00	90.12	269.60	7122.18	10333.96	-1063.09	-10279.69	40.4112261	-104.8652071	0.01
16804.00	90.11	269.60	7121.98	10433.59	-1063.79	-10379.68	40.4112240	-104.8655662	0.01
16904.00	90.10	269.60	7121.80	10533.22	-1064.49	-10479.68	40.4112220	-104.8659253	0.01
17004.00	90.09	269.60	7121.64	10632.86	-1065.18	-10579.68	40.4112200	-104.8662844	0.01
17104.00	90.08	269.60	7121.50	10732.49	-1065.87	-10679.68	40.4112179	-104.8666435	0.01
17204.00	90.07	269.60	7121.37	10832.12	-1066.57	-10779.67	40.4112159	-104.8670026	0.01
17304.00	90.06	269.61	7121.27	10931.75	-1067.26	-10879.67	40.4112139	-104.8673616	0.01
17404.00	90.05	269.61	7121.18	11031.38	-1067.95	-10979.67	40.4112119	-104.8677207	0.01
17504.00	90.04	269.61	7121.11	11131.02	-1068.63	-11079.67	40.4112099	-104.8680798	0.01
17604.00	90.03	269.61	7121.05	11230.65	-1069.32	-11179.66	40.4112079	-104.8684389	0.01
17704.00	90.02	269.61	7121.02	11330.28	-1070.01	-11279.66	40.4112059	-104.8687980	0.01
17804.00	90.01	269.61	7121.00	11429.91	-1070.69	-11379.66	40.4112039	-104.8691571	0.01
17847.70	90.00	269.61	7121.00	11473.45	-1070.99	-11423.35	40.4112030	-104.8693140	0.01



BOST FARM 12C-11-L (REV-C.0) LAS.las									
17904.00	90.00	269.61	7121.00	11529.54	-1071.37	-11479.66	40.4112019	-104.8695162	0.00
17947.67	90.00	269.61	7121.00	11573.05	-1071.67	-11523.33	40.4112010	-104.8696730	0.00



# Planned Wellpath Report

BOST FARM 12C-11-L (REV-C.0) PWP

Page 1 of 10



## REFERENCE WELLPATH IDENTIFICATION

Operator	SRC ENERGY	Slot	SLOT#05 BOST FARM 12C-11-L (2666'FSL & 1134'FWL, SEC.07)
Area	COLORADO	Well	BOST FARM 12C-11-L
Field	WELD COUNTY (NAD83,TRUE NORTH)	Wellbore	BOST FARM 12C-11-L PWB
Facility	SEC.07-T05N-R66W		

## REPORT SETUP INFORMATION

Projection System	NAD83 / Lambert Colorado SP, Northern Zone (501), US feet	Software System	WellArchitect® 5.1
North Reference	True	User	Bushjamh
Scale	0.999961	Report Generated	01/03/2019 at 13:57
Convergence at slot	0.43° East	Database/Source file	WA_DEN_Denver_Defn/BOST FARM 12C-11-L (REV-C.0) PWP PR.xml

## WELLPATH LOCATION

	Local coordinates		Grid coordinates		Geographic coordinates	
	North[ft]	East[ft]	Easting[US ft]	Northing[US ft]	Latitude	Longitude
Slot Location	114.76	-124.21	3187036.52	1394423.60	40°24'50.940"N	104°49'41.855"W
Facility Reference Pt			3187161.59	1394309.79	40°24'49.806"N	104°49'40.249"W
Field Reference Pt			3171284.48	1426358.81	40°30'07.643"N	104°53'02.634"W

## WELLPATH DATUM

Calculation method	Minimum curvature	IKON 12 (4') (RKB) to Facility Vertical Datum	4879.00ft
Horizontal Reference Pt	Slot	IKON 12 (4') (RKB) to Mean Sea Level	4879.00ft
Vertical Reference Pt	IKON 12 (4') (RKB)	IKON 12 (4') (RKB) to Mud Line at Slot (SLOT#05 BOST FARM 12C-11-L (2666'FSL & 1134'FWL, SEC.07))	4879.00ft
MD Reference Pt	IKON 12 (4') (RKB)	Section Origin	N 0.00, E 0.00 ft
Field Vertical Reference	Mean Sea Level	Section Azimuth	264.69°



# Planned Wellpath Report

BOST FARM 12C-11-L (REV-C.0) PWP

Page 2 of 10

**BAKER  
HUGHES**  
a GE company



## REFERENCE WELLPATH IDENTIFICATION

Operator	SRC ENERGY	Slot	SLOT#05 BOST FARM 12C-11-L (2666'FSL & 1134'FWL, SEC.07)
Area	COLORADO	Well	BOST FARM 12C-11-L
Field	WELD COUNTY (NAD83,TRUE NORTH)	Wellbore	BOST FARM 12C-11-L PWB
Facility	SEC.07-T05N-R66W		

## WELLPATH DATA (187 stations) † = interpolated/extrapolated station

MD [ft]	Inclination [°]	Azimuth [°]	TVD [ft]	Vert Sect [ft]	North [ft]	East [ft]	Latitude	Longitude	DLS [°/100ft]	Comments
0.00†	0.000	215.263	0.00	0.00	0.00	0.00	40°24'50.940"N	104°49'41.855"W	0.00	
4.00	0.000	215.263	4.00	0.00	0.00	0.00	40°24'50.940"N	104°49'41.855"W	0.00	Tie On
104.00†	0.000	215.263	104.00	0.00	0.00	0.00	40°24'50.940"N	104°49'41.855"W	0.00	
204.00†	0.000	215.263	204.00	0.00	0.00	0.00	40°24'50.940"N	104°49'41.855"W	0.00	
304.00†	0.000	215.263	304.00	0.00	0.00	0.00	40°24'50.940"N	104°49'41.855"W	0.00	
404.00†	0.000	215.263	404.00	0.00	0.00	0.00	40°24'50.940"N	104°49'41.855"W	0.00	
504.00†	0.000	215.263	504.00	0.00	0.00	0.00	40°24'50.940"N	104°49'41.855"W	0.00	
604.00†	0.000	215.263	604.00	0.00	0.00	0.00	40°24'50.940"N	104°49'41.855"W	0.00	
704.00†	0.000	215.263	704.00	0.00	0.00	0.00	40°24'50.940"N	104°49'41.855"W	0.00	
800.00	0.000	215.263	800.00	0.00	0.00	0.00	40°24'50.940"N	104°49'41.855"W	0.00	End of Tangent
804.00†	0.080	215.263	804.00	0.00	0.00	0.00	40°24'50.940"N	104°49'41.855"W	2.00	
904.00†	2.080	215.263	903.98	1.23	-1.54	-1.09	40°24'50.925"N	104°49'41.869"W	2.00	
1004.00†	4.080	215.263	1003.83	4.72	-5.93	-4.19	40°24'50.881"N	104°49'41.909"W	2.00	
1104.00†	6.080	215.263	1103.43	10.48	-13.16	-9.30	40°24'50.810"N	104°49'41.975"W	2.00	
1204.00†	8.080	215.263	1202.66	18.50	-23.22	-16.42	40°24'50.711"N	104°49'42.067"W	2.00	
1304.00†	10.080	215.263	1301.40	28.76	-36.11	-25.53	40°24'50.583"N	104°49'42.185"W	2.00	
1357.98	11.160	215.263	1354.46	35.23	-44.23	-31.27	40°24'50.503"N	104°49'42.259"W	2.00	End of Build
1404.00†	11.160	215.263	1399.61	41.03	-51.50	-36.41	40°24'50.431"N	104°49'42.326"W	0.00	
1504.00†	11.160	215.263	1497.72	53.62	-67.30	-47.59	40°24'50.275"N	104°49'42.470"W	0.00	
1604.00†	11.160	215.263	1595.83	66.21	-83.11	-58.76	40°24'50.119"N	104°49'42.614"W	0.00	
1704.00†	11.160	215.263	1693.94	78.79	-98.91	-69.94	40°24'49.963"N	104°49'42.759"W	0.00	
1804.00†	11.160	215.263	1792.05	91.38	-114.71	-81.11	40°24'49.806"N	104°49'42.903"W	0.00	
1904.00†	11.160	215.263	1890.15	103.97	-130.52	-92.28	40°24'49.650"N	104°49'43.048"W	0.00	
2004.00†	11.160	215.263	1988.26	116.56	-146.32	-103.46	40°24'49.494"N	104°49'43.192"W	0.00	
2104.00†	11.160	215.263	2086.37	129.15	-162.12	-114.63	40°24'49.338"N	104°49'43.337"W	0.00	
2204.00†	11.160	215.263	2184.48	141.74	-177.93	-125.80	40°24'49.182"N	104°49'43.481"W	0.00	
2304.00†	11.160	215.263	2282.59	154.33	-193.73	-136.98	40°24'49.026"N	104°49'43.626"W	0.00	
2404.00†	11.160	215.263	2380.70	166.92	-209.53	-148.15	40°24'48.869"N	104°49'43.770"W	0.00	
2504.00†	11.160	215.263	2478.81	179.51	-225.33	-159.32	40°24'48.713"N	104°49'43.915"W	0.00	
2604.00†	11.160	215.263	2576.92	192.10	-241.14	-170.50	40°24'48.557"N	104°49'44.059"W	0.00	



# Planned Wellpath Report

BOST FARM 12C-11-L (REV-C.0) PWP

Page 3 of 10



## REFERENCE WELLPATH IDENTIFICATION

Operator	SRC ENERGY	Slot	SLOT#05 BOST FARM 12C-11-L (2666'FSL & 1134'FWL, SEC.07)
Area	COLORADO	Well	BOST FARM 12C-11-L
Field	WELD COUNTY (NAD83,TRUE NORTH)	Wellbore	BOST FARM 12C-11-L PWB
Facility	SEC.07-T05N-R66W		

## WELLPATH DATA (187 stations) † = interpolated/extrapolated station

MD [ft]	Inclination [°]	Azimuth [°]	TVD [ft]	Vert Sect [ft]	North [ft]	East [ft]	Latitude	Longitude	DLS [°/100ft]	Comments
2704.00†	11.160	215.263	2675.03	204.68	-256.94	-181.67	40°24'48.401"N	104°49'44.203"W	0.00	
2804.00†	11.160	215.263	2773.14	217.27	-272.74	-192.85	40°24'48.245"N	104°49'44.348"W	0.00	
2904.00†	11.160	215.263	2871.25	229.86	-288.55	-204.02	40°24'48.089"N	104°49'44.492"W	0.00	
3004.00†	11.160	215.263	2969.36	242.45	-304.35	-215.19	40°24'47.933"N	104°49'44.637"W	0.00	
3104.00†	11.160	215.263	3067.46	255.04	-320.15	-226.37	40°24'47.776"N	104°49'44.781"W	0.00	
3204.00†	11.160	215.263	3165.57	267.63	-335.96	-237.54	40°24'47.620"N	104°49'44.926"W	0.00	
3304.00†	11.160	215.263	3263.68	280.22	-351.76	-248.71	40°24'47.464"N	104°49'45.070"W	0.00	
3404.00†	11.160	215.263	3361.79	292.81	-367.56	-259.89	40°24'47.308"N	104°49'45.215"W	0.00	
3504.00†	11.160	215.263	3459.90	305.40	-383.37	-271.06	40°24'47.152"N	104°49'45.359"W	0.00	
3604.00†	11.160	215.263	3558.01	317.99	-399.17	-282.24	40°24'46.996"N	104°49'45.503"W	0.00	
3704.00†	11.160	215.263	3656.12	330.57	-414.97	-293.41	40°24'46.839"N	104°49'45.648"W	0.00	
3804.00†	11.160	215.263	3754.23	343.16	-430.77	-304.58	40°24'46.683"N	104°49'45.792"W	0.00	
3904.00†	11.160	215.263	3852.34	355.75	-446.58	-315.76	40°24'46.527"N	104°49'45.937"W	0.00	
4004.00†	11.160	215.263	3950.45	368.34	-462.38	-326.93	40°24'46.371"N	104°49'46.081"W	0.00	
4104.00†	11.160	215.263	4048.56	380.93	-478.18	-338.10	40°24'46.215"N	104°49'46.226"W	0.00	
4204.00†	11.160	215.263	4146.67	393.52	-493.99	-349.28	40°24'46.059"N	104°49'46.370"W	0.00	
4304.00†	11.160	215.263	4244.78	406.11	-509.79	-360.45	40°24'45.902"N	104°49'46.515"W	0.00	
4404.00†	11.160	215.263	4342.88	418.70	-525.59	-371.62	40°24'45.746"N	104°49'46.659"W	0.00	
4504.00†	11.160	215.263	4440.99	431.29	-541.40	-382.80	40°24'45.590"N	104°49'46.804"W	0.00	
4604.00†	11.160	215.263	4539.10	443.88	-557.20	-393.97	40°24'45.434"N	104°49'46.948"W	0.00	
4704.00†	11.160	215.263	4637.21	456.46	-573.00	-405.15	40°24'45.278"N	104°49'47.092"W	0.00	
4804.00†	11.160	215.263	4735.32	469.05	-588.80	-416.32	40°24'45.122"N	104°49'47.237"W	0.00	
4904.00†	11.160	215.263	4833.43	481.64	-604.61	-427.49	40°24'44.965"N	104°49'47.381"W	0.00	
5004.00†	11.160	215.263	4931.54	494.23	-620.41	-438.67	40°24'44.809"N	104°49'47.526"W	0.00	
5104.00†	11.160	215.263	5029.65	506.82	-636.21	-449.84	40°24'44.653"N	104°49'47.670"W	0.00	
5204.00†	11.160	215.263	5127.76	519.41	-652.02	-461.01	40°24'44.497"N	104°49'47.815"W	0.00	
5304.00†	11.160	215.263	5225.87	532.00	-667.82	-472.19	40°24'44.341"N	104°49'47.959"W	0.00	
5404.00†	11.160	215.263	5323.98	544.59	-683.62	-483.36	40°24'44.185"N	104°49'48.104"W	0.00	
5504.00†	11.160	215.263	5422.09	557.18	-699.43	-494.53	40°24'44.028"N	104°49'48.248"W	0.00	
5604.00†	11.160	215.263	5520.19	569.77	-715.23	-505.71	40°24'43.872"N	104°49'48.392"W	0.00	



# Planned Wellpath Report

BOST FARM 12C-11-L (REV-C.0) PWP

Page 4 of 10



## REFERENCE WELLPATH IDENTIFICATION

Operator	SRC ENERGY	Slot	SLOT#05 BOST FARM 12C-11-L (2666'FSL & 1134'FWL, SEC.07)
Area	COLORADO	Well	BOST FARM 12C-11-L
Field	WELD COUNTY (NAD83,TRUE NORTH)	Wellbore	BOST FARM 12C-11-L PWB
Facility	SEC.07-T05N-R66W		

## WELLPATH DATA (187 stations) † = interpolated/extrapolated station

MD [ft]	Inclination [°]	Azimuth [°]	TVD [ft]	Vert Sect [ft]	North [ft]	East [ft]	Latitude	Longitude	DLS [°/100ft]	Comments
5704.00†	11.160	215.263	5618.30	582.35	-731.03	-516.88	40°24'43.716"N	104°49'48.537"W	0.00	
5804.00†	11.160	215.263	5716.41	594.94	-746.83	-528.06	40°24'43.560"N	104°49'48.681"W	0.00	
5904.00†	11.160	215.263	5814.52	607.53	-762.64	-539.23	40°24'43.404"N	104°49'48.826"W	0.00	
6004.00†	11.160	215.263	5912.63	620.12	-778.44	-550.40	40°24'43.248"N	104°49'48.970"W	0.00	
6104.00†	11.160	215.263	6010.74	632.71	-794.24	-561.58	40°24'43.092"N	104°49'49.115"W	0.00	
6204.00†	11.160	215.263	6108.85	645.30	-810.05	-572.75	40°24'42.935"N	104°49'49.259"W	0.00	
6304.00†	11.160	215.263	6206.96	657.89	-825.85	-583.92	40°24'42.779"N	104°49'49.404"W	0.00	
6404.00†	11.160	215.263	6305.07	670.48	-841.65	-595.10	40°24'42.623"N	104°49'49.548"W	0.00	
6504.00†	11.160	215.263	6403.18	683.07	-857.46	-606.27	40°24'42.467"N	104°49'49.692"W	0.00	
6604.00†	11.160	215.263	6501.29	695.66	-873.26	-617.44	40°24'42.311"N	104°49'49.837"W	0.00	
6704.00†	11.160	215.263	6599.40	708.25	-889.06	-628.62	40°24'42.155"N	104°49'49.981"W	0.00	
6762.52	11.160	215.263	6656.81	715.61	-898.31	-635.16	40°24'42.063"N	104°49'50.066"W	0.00	End of Tangent
6804.00†	13.660	228.251	6697.32	722.17	-904.85	-641.13	40°24'41.999"N	104°49'50.143"W	9.00	
6904.00†	21.210	245.044	6792.72	748.76	-920.38	-666.39	40°24'41.845"N	104°49'50.470"W	9.00	
7004.00†	29.558	252.994	6883.01	790.03	-935.25	-706.46	40°24'41.698"N	104°49'50.988"W	9.00	
7104.00†	38.184	257.637	6965.98	844.97	-949.12	-760.35	40°24'41.561"N	104°49'51.684"W	9.00	
7204.00†	46.933	260.770	7039.57	912.23	-961.62	-826.74	40°24'41.438"N	104°49'52.542"W	9.00	
7304.00†	55.746	263.113	7101.99	990.14	-972.46	-903.98	40°24'41.330"N	104°49'53.541"W	9.00	
7404.00†	64.596	265.007	7151.68	1076.80	-981.36	-990.18	40°24'41.242"N	104°49'54.655"W	9.00	
7504.00†	73.466	266.641	7187.44	1170.06	-988.11	-1083.21	40°24'41.176"N	104°49'55.858"W	9.00	
7604.00†	82.347	268.129	7208.37	1267.63	-992.55	-1180.79	40°24'41.132"N	104°49'57.120"W	9.00	
7701.93	91.050	269.527	7214.00†	1365.05	-994.54	-1278.45	40°24'41.112"N	104°49'58.382"W	9.00	End of 3D Arc
7704.00†	91.050	269.527	7213.96	1367.11	-994.56	-1280.51	40°24'41.112"N	104°49'58.409"W	0.01	
7804.00†	91.040	269.528	7212.14	1466.74	-995.38	-1380.49	40°24'41.104"N	104°49'59.701"W	0.01	
7904.00†	91.029	269.529	7210.33	1566.36	-996.20	-1480.47	40°24'41.095"N	104°50'00.994"W	0.01	
8004.00†	91.019	269.530	7208.54	1665.99	-997.03	-1580.45	40°24'41.087"N	104°50'02.286"W	0.01	
8104.00†	91.009	269.531	7206.78	1765.62	-997.85	-1680.44	40°24'41.079"N	104°50'03.579"W	0.01	
8204.00†	90.998	269.532	7205.02	1865.24	-998.66	-1780.42	40°24'41.071"N	104°50'04.871"W	0.01	
8304.00†	90.988	269.532	7203.29	1964.87	-999.48	-1880.40	40°24'41.063"N	104°50'06.164"W	0.01	
8404.00†	90.978	269.533	7201.57	2064.50	-1000.30	-1980.38	40°24'41.055"N	104°50'07.456"W	0.01	



# Planned Wellpath Report

BOST FARM 12C-11-L (REV-C.0) PWP

Page 5 of 10



## REFERENCE WELLPATH IDENTIFICATION

Operator	SRC ENERGY	Slot	SLOT#05 BOST FARM 12C-11-L (2666'FSL & 1134'FWL, SEC.07)
Area	COLORADO	Well	BOST FARM 12C-11-L
Field	WELD COUNTY (NAD83,TRUE NORTH)	Wellbore	BOST FARM 12C-11-L PWB
Facility	SEC.07-T05N-R66W		

## WELLPATH DATA (187 stations) † = interpolated/extrapolated station

MD [ft]	Inclination [°]	Azimuth [°]	TVD [ft]	Vert Sect [ft]	North [ft]	East [ft]	Latitude	Longitude	DLS [°/100ft]	Comments
8504.00†	90.967	269.534	7199.88	2164.13	-1001.11	-2080.36	40°24'41.047"N	104°50'08.749"W	0.01	
8604.00†	90.957	269.535	7198.20	2263.76	-1001.92	-2180.35	40°24'41.038"N	104°50'10.041"W	0.01	
8704.00†	90.947	269.536	7196.54	2363.38	-1002.73	-2280.33	40°24'41.030"N	104°50'11.334"W	0.01	
8804.00†	90.936	269.536	7194.89	2463.01	-1003.54	-2380.31	40°24'41.022"N	104°50'12.626"W	0.01	
8904.00†	90.926	269.537	7193.27	2562.64	-1004.35	-2480.30	40°24'41.014"N	104°50'13.919"W	0.01	
9004.00†	90.916	269.538	7191.66	2662.27	-1005.16	-2580.28	40°24'41.006"N	104°50'15.211"W	0.01	
9104.00†	90.905	269.539	7190.07	2761.90	-1005.96	-2680.26	40°24'40.998"N	104°50'16.504"W	0.01	
9204.00†	90.895	269.540	7188.50	2861.53	-1006.77	-2780.25	40°24'40.990"N	104°50'17.797"W	0.01	
9304.00†	90.885	269.540	7186.95	2961.16	-1007.57	-2880.23	40°24'40.982"N	104°50'19.089"W	0.01	
9404.00†	90.874	269.541	7185.41	3060.79	-1008.37	-2980.22	40°24'40.974"N	104°50'20.382"W	0.01	
9504.00†	90.864	269.542	7183.90	3160.42	-1009.17	-3080.20	40°24'40.966"N	104°50'21.674"W	0.01	
9604.00†	90.853	269.543	7182.40	3260.05	-1009.97	-3180.19	40°24'40.958"N	104°50'22.967"W	0.01	
9704.00†	90.843	269.544	7180.92	3359.68	-1010.77	-3280.17	40°24'40.950"N	104°50'24.259"W	0.01	
9804.00†	90.833	269.544	7179.46	3459.31	-1011.56	-3380.16	40°24'40.942"N	104°50'25.552"W	0.01	
9904.00†	90.822	269.545	7178.01	3558.94	-1012.36	-3480.15	40°24'40.934"N	104°50'26.845"W	0.01	
10004.00†	90.812	269.546	7176.59	3658.57	-1013.15	-3580.13	40°24'40.926"N	104°50'28.137"W	0.01	
10104.00†	90.802	269.547	7175.18	3758.20	-1013.94	-3680.12	40°24'40.918"N	104°50'29.430"W	0.01	
10204.00†	90.791	269.548	7173.79	3857.83	-1014.73	-3780.11	40°24'40.910"N	104°50'30.722"W	0.01	
10304.00†	90.781	269.548	7172.41	3957.46	-1015.52	-3880.10	40°24'40.902"N	104°50'32.015"W	0.01	
10404.00†	90.771	269.549	7171.06	4057.09	-1016.31	-3980.08	40°24'40.894"N	104°50'33.308"W	0.01	
10504.00†	90.760	269.550	7169.72	4156.72	-1017.10	-4080.07	40°24'40.886"N	104°50'34.600"W	0.01	
10604.00†	90.750	269.551	7168.41	4256.36	-1017.88	-4180.06	40°24'40.878"N	104°50'35.893"W	0.01	
10704.00†	90.740	269.552	7167.11	4355.99	-1018.66	-4280.05	40°24'40.870"N	104°50'37.185"W	0.01	
10804.00†	90.729	269.552	7165.83	4455.62	-1019.45	-4380.04	40°24'40.862"N	104°50'38.478"W	0.01	
10904.00†	90.719	269.553	7164.56	4555.25	-1020.23	-4480.03	40°24'40.854"N	104°50'39.771"W	0.01	
11004.00†	90.709	269.554	7163.32	4654.88	-1021.01	-4580.01	40°24'40.847"N	104°50'41.063"W	0.01	
11104.00†	90.698	269.555	7162.09	4754.51	-1021.78	-4680.00	40°24'40.839"N	104°50'42.356"W	0.01	
11204.00†	90.688	269.556	7160.88	4854.15	-1022.56	-4779.99	40°24'40.831"N	104°50'43.648"W	0.01	
11304.00†	90.677	269.556	7159.69	4953.78	-1023.33	-4879.98	40°24'40.823"N	104°50'44.941"W	0.01	
11404.00†	90.667	269.557	7158.51	5053.41	-1024.11	-4979.97	40°24'40.815"N	104°50'46.234"W	0.01	





# Planned Wellpath Report

BOST FARM 12C-11-L (REV-C.0) PWP

Page 6 of 10



## REFERENCE WELLPATH IDENTIFICATION

Operator	SRC ENERGY	Slot	SLOT#05 BOST FARM 12C-11-L (2666'FSL & 1134'FWL, SEC.07)
Area	COLORADO	Well	BOST FARM 12C-11-L
Field	WELD COUNTY (NAD83,TRUE NORTH)	Wellbore	BOST FARM 12C-11-L PWB
Facility	SEC.07-T05N-R66W		

## WELLPATH DATA (187 stations) † = interpolated/extrapolated station

MD [ft]	Inclination [°]	Azimuth [°]	TVD [ft]	Vert Sect [ft]	North [ft]	East [ft]	Latitude	Longitude	DLS [°/100ft]	Comments
11504.00†	90.657	269.558	7157.36	5153.04	-1024.88	-5079.96	40°24'40.807"N	104°50'47.526"W	0.01	
11604.00†	90.646	269.559	7156.22	5252.67	-1025.65	-5179.95	40°24'40.800"N	104°50'48.819"W	0.01	
11704.00†	90.636	269.560	7155.10	5352.31	-1026.42	-5279.95	40°24'40.792"N	104°50'50.112"W	0.01	
11804.00†	90.626	269.560	7154.00	5451.94	-1027.19	-5379.94	40°24'40.784"N	104°50'51.404"W	0.01	
11904.00†	90.615	269.561	7152.92	5551.57	-1027.95	-5479.93	40°24'40.776"N	104°50'52.697"W	0.01	
12004.00†	90.605	269.562	7151.85	5651.20	-1028.72	-5579.92	40°24'40.768"N	104°50'53.989"W	0.01	
12104.00†	90.595	269.563	7150.81	5750.84	-1029.48	-5679.91	40°24'40.761"N	104°50'55.282"W	0.01	
12204.00†	90.584	269.564	7149.78	5850.47	-1030.24	-5779.90	40°24'40.753"N	104°50'56.575"W	0.01	
12304.00†	90.574	269.564	7148.77	5950.10	-1031.01	-5879.89	40°24'40.745"N	104°50'57.867"W	0.01	
12404.00†	90.564	269.565	7147.77	6049.73	-1031.76	-5979.89	40°24'40.737"N	104°50'59.160"W	0.01	
12504.00†	90.553	269.566	7146.80	6149.37	-1032.52	-6079.88	40°24'40.730"N	104°51'00.453"W	0.01	
12604.00†	90.543	269.567	7145.84	6249.00	-1033.28	-6179.87	40°24'40.722"N	104°51'01.745"W	0.01	
12704.00†	90.533	269.568	7144.90	6348.63	-1034.03	-6279.86	40°24'40.714"N	104°51'03.038"W	0.01	
12804.00†	90.522	269.568	7143.98	6448.27	-1034.79	-6379.86	40°24'40.706"N	104°51'04.331"W	0.01	
12904.00†	90.512	269.569	7143.08	6547.90	-1035.54	-6479.85	40°24'40.699"N	104°51'05.623"W	0.01	
13004.00†	90.501	269.570	7142.20	6647.53	-1036.29	-6579.84	40°24'40.691"N	104°51'06.916"W	0.01	
13104.00†	90.491	269.571	7141.33	6747.17	-1037.04	-6679.84	40°24'40.683"N	104°51'08.209"W	0.01	
13204.00†	90.481	269.572	7140.48	6846.80	-1037.79	-6779.83	40°24'40.676"N	104°51'09.501"W	0.01	
13304.00†	90.470	269.573	7139.65	6946.43	-1038.54	-6879.82	40°24'40.668"N	104°51'10.794"W	0.01	
13404.00†	90.460	269.573	7138.84	7046.07	-1039.28	-6979.82	40°24'40.660"N	104°51'12.087"W	0.01	
13504.00†	90.450	269.574	7138.05	7145.70	-1040.03	-7079.81	40°24'40.653"N	104°51'13.379"W	0.01	
13604.00†	90.439	269.575	7137.27	7245.33	-1040.77	-7179.81	40°24'40.645"N	104°51'14.672"W	0.01	
13704.00†	90.429	269.576	7136.51	7344.97	-1041.51	-7279.80	40°24'40.638"N	104°51'15.965"W	0.01	
13804.00†	90.419	269.577	7135.77	7444.60	-1042.25	-7379.80	40°24'40.630"N	104°51'17.257"W	0.01	
13904.00†	90.408	269.577	7135.05	7544.23	-1042.99	-7479.79	40°24'40.622"N	104°51'18.550"W	0.01	
14004.00†	90.398	269.578	7134.35	7643.87	-1043.72	-7579.78	40°24'40.615"N	104°51'19.843"W	0.01	
14104.00†	90.388	269.579	7133.66	7743.50	-1044.46	-7679.78	40°24'40.607"N	104°51'21.135"W	0.01	
14204.00†	90.377	269.580	7133.00	7843.13	-1045.19	-7779.77	40°24'40.600"N	104°51'22.428"W	0.01	
14304.00†	90.367	269.581	7132.35	7942.77	-1045.93	-7879.77	40°24'40.592"N	104°51'23.721"W	0.01	
14404.00†	90.357	269.581	7131.71	8042.40	-1046.66	-7979.77	40°24'40.585"N	104°51'25.013"W	0.01	



# Planned Wellpath Report

BOST FARM 12C-11-L (REV-C.0) PWP

Page 7 of 10



## REFERENCE WELLPATH IDENTIFICATION

Operator	SRC ENERGY	Slot	SLOT#05 BOST FARM 12C-11-L (2666'FSL & 1134'FWL, SEC.07)
Area	COLORADO	Well	BOST FARM 12C-11-L
Field	WELD COUNTY (NAD83,TRUE NORTH)	Wellbore	BOST FARM 12C-11-L PWB
Facility	SEC.07-T05N-R66W		

## WELLPATH DATA (187 stations) † = interpolated/extrapolated station

MD [ft]	Inclination [°]	Azimuth [°]	TVD [ft]	Vert Sect [ft]	North [ft]	East [ft]	Latitude	Longitude	DLS [°/100ft]	Comments
14504.00†	90.346	269.582	7131.10	8142.03	-1047.39	-8079.76	40°24'40.577"N	104°51'26.306"W	0.01	
14604.00†	90.336	269.583	7130.51	8241.67	-1048.12	-8179.76	40°24'40.570"N	104°51'27.599"W	0.01	
14704.00†	90.325	269.584	7129.93	8341.30	-1048.84	-8279.75	40°24'40.562"N	104°51'28.892"W	0.01	
14804.00†	90.315	269.585	7129.37	8440.93	-1049.57	-8379.75	40°24'40.555"N	104°51'30.184"W	0.01	
14904.00†	90.305	269.585	7128.83	8540.57	-1050.29	-8479.74	40°24'40.547"N	104°51'31.477"W	0.01	
15004.00†	90.294	269.586	7128.31	8640.20	-1051.02	-8579.74	40°24'40.540"N	104°51'32.770"W	0.01	
15104.00†	90.284	269.587	7127.80	8739.83	-1051.74	-8679.74	40°24'40.532"N	104°51'34.062"W	0.01	
15204.00†	90.274	269.588	7127.31	8839.47	-1052.46	-8779.73	40°24'40.525"N	104°51'35.355"W	0.01	
15304.00†	90.263	269.589	7126.85	8939.10	-1053.18	-8879.73	40°24'40.517"N	104°51'36.648"W	0.01	
15404.00†	90.253	269.589	7126.40	9038.73	-1053.89	-8979.72	40°24'40.510"N	104°51'37.940"W	0.01	
15504.00†	90.243	269.590	7125.96	9138.37	-1054.61	-9079.72	40°24'40.502"N	104°51'39.233"W	0.01	
15604.00†	90.232	269.591	7125.55	9238.00	-1055.32	-9179.72	40°24'40.495"N	104°51'40.526"W	0.01	
15704.00†	90.222	269.592	7125.15	9337.63	-1056.04	-9279.71	40°24'40.487"N	104°51'41.819"W	0.01	
15804.00†	90.212	269.593	7124.77	9437.27	-1056.75	-9379.71	40°24'40.480"N	104°51'43.111"W	0.01	
15904.00†	90.201	269.593	7124.41	9536.90	-1057.46	-9479.71	40°24'40.473"N	104°51'44.404"W	0.01	
16004.00†	90.191	269.594	7124.07	9636.53	-1058.17	-9579.71	40°24'40.465"N	104°51'45.697"W	0.01	
16104.00†	90.181	269.595	7123.75	9736.16	-1058.88	-9679.70	40°24'40.458"N	104°51'46.989"W	0.01	
16204.00†	90.170	269.596	7123.44	9835.80	-1059.58	-9779.70	40°24'40.450"N	104°51'48.282"W	0.01	
16304.00†	90.160	269.597	7123.15	9935.43	-1060.29	-9879.70	40°24'40.443"N	104°51'49.575"W	0.01	
16404.00†	90.149	269.597	7122.88	10035.06	-1060.99	-9979.69	40°24'40.436"N	104°51'50.868"W	0.01	
16504.00†	90.139	269.598	7122.63	10134.69	-1061.69	-10079.69	40°24'40.428"N	104°51'52.160"W	0.01	
16604.00†	90.129	269.599	7122.40	10234.33	-1062.39	-10179.69	40°24'40.421"N	104°51'53.453"W	0.01	
16704.00†	90.118	269.600	7122.18	10333.96	-1063.09	-10279.69	40°24'40.414"N	104°51'54.746"W	0.01	
16804.00†	90.108	269.601	7121.98	10433.59	-1063.79	-10379.68	40°24'40.406"N	104°51'56.038"W	0.01	
16904.00†	90.098	269.601	7121.80	10533.22	-1064.49	-10479.68	40°24'40.399"N	104°51'57.331"W	0.01	
17004.00†	90.087	269.602	7121.64	10632.86	-1065.18	-10579.68	40°24'40.392"N	104°51'58.624"W	0.01	
17104.00†	90.077	269.603	7121.50	10732.49	-1065.87	-10679.68	40°24'40.385"N	104°51'59.917"W	0.01	
17204.00†	90.067	269.604	7121.37	10832.12	-1066.57	-10779.67	40°24'40.377"N	104°52'01.209"W	0.01	
17304.00†	90.056	269.605	7121.27	10931.75	-1067.26	-10879.67	40°24'40.370"N	104°52'02.502"W	0.01	
17404.00†	90.046	269.605	7121.18	11031.38	-1067.95	-10979.67	40°24'40.363"N	104°52'03.795"W	0.01	





# Planned Wellpath Report

BOST FARM 12C-11-L (REV-C.0) PWP

Page 8 of 10



## REFERENCE WELLPATH IDENTIFICATION

Operator	SRC ENERGY	Slot	SLOT#05 BOST FARM 12C-11-L (2666'FSL & 1134'FWL, SEC.07)
Area	COLORADO	Well	BOST FARM 12C-11-L
Field	WELD COUNTY (NAD83,TRUE NORTH)	Wellbore	BOST FARM 12C-11-L PWB
Facility	SEC.07-T05N-R66W		

## WELLPATH DATA (187 stations) † = interpolated/extrapolated station

MD [ft]	Inclination [°]	Azimuth [°]	TVD [ft]	Vert Sect [ft]	North [ft]	East [ft]	Latitude	Longitude	DLS [°/100ft]	Comments
17504.00†	90.036	269.606	7121.11	11131.02	-1068.63	-11079.67	40°24'40.356"N	104°52'05.087"W	0.01	
17604.00†	90.025	269.607	7121.05	11230.65	-1069.32	-11179.66	40°24'40.348"N	104°52'06.380"W	0.01	
17704.00†	90.015	269.608	7121.02	11330.28	-1070.01	-11279.66	40°24'40.341"N	104°52'07.673"W	0.01	
17804.00†	90.005	269.609	7121.00	11429.91	-1070.69	-11379.66	40°24'40.334"N	104°52'08.966"W	0.01	
17847.70	90.000	269.609	7121.00 <sup>2</sup>	11473.45	-1070.99	-11423.35	40°24'40.331"N	104°52'09.530"W	0.01	End of 3D Arc
17904.00†	90.000	269.609	7121.00	11529.54	-1071.37	-11479.66	40°24'40.327"N	104°52'10.258"W	0.00	
17947.67	90.000	269.609	7121.00 <sup>3</sup>	11573.05	-1071.67	-11523.33	40°24'40.324"N	104°52'10.823"W	0.00	End of Tangent

## HOLE & CASING SECTIONS - Ref Wellbore: BOST FARM 12C-11-L PWB Ref Wellpath: BOST FARM 12C-11-L (REV-C.0) PWP

String/Diameter	Start MD [ft]	End MD [ft]	Interval [ft]	Start TVD [ft]	End TVD [ft]	Start N/S [ft]	Start E/W [ft]	End N/S [ft]	End E/W [ft]
13.5in Open Hole	4.00	1750.00	1746.00	4.00	1739.07	0.00	0.00	-106.18	-75.08
9.625in Casing Surface	4.00	1750.00	1746.00	4.00	1739.07	0.00	0.00	-106.18	-75.08
8.5in Open Hole	1750.00	17947.67	16197.67	1739.07	7121.00	-106.18	-75.08	-1071.67	-11523.33



# Planned Wellpath Report

BOST FARM 12C-11-L (REV-C.0) PWP

Page 9 of 10



## REFERENCE WELLPATH IDENTIFICATION

Operator	SRC ENERGY	Slot	SLOT#05 BOST FARM 12C-11-L (2666'FSL & 1134'FWL, SEC.07)
Area	COLORADO	Well	BOST FARM 12C-11-L
Field	WELD COUNTY (NAD83,TRUE NORTH)	Wellbore	BOST FARM 12C-11-L PWB
Facility	SEC.07-T05N-R66W		

## TARGETS

Name	MD [ft]	TVD [ft]	North [ft]	East [ft]	Grid East [US ft]	Grid North [US ft]	Latitude	Longitude	Shape
SEC.07-T05N-R66W		3.00	-114.76	124.21	3187161.59	1394309.79	40°24'49.806"N	104°49'40.249"W	polygon
SEC.11-T05N-R67W		3.00	-114.76	124.21	3187161.59	1394309.79	40°24'49.806"N	104°49'40.249"W	polygon
SEC.12-T05N-R67W		3.00	-114.76	124.21	3187161.59	1394309.79	40°24'49.806"N	104°49'40.249"W	polygon
BOST FARM 12C-11-L BHL ON PLAT (1597'FSL & 360'FWL, SEC.11)		7116.00	-1069.26	-11213.38	3175832.02	1393269.47	40°24'40.349"N	104°52'06.816"W	point
BOST FARM 12C-11-L BPZ ON PLAT (1599'FSL & 460'FWL, SEC.11)		7116.00	-1068.58	-11113.41	3175931.98	1393270.91	40°24'40.356"N	104°52'05.524"W	point
BOST FARM 12C-11-L BHL REV-1 (1597'FSL & 360'FWL, SEC.11)		7121.00	-1069.24	-11213.38	3175832.02	1393269.49	40°24'40.349"N	104°52'06.816"W	point
3) BOST FARM 12C-11-L BHL REV-2 (1591'FSL & 50'FWL, SEC.11)	17947.67	7121.00	-1071.67	-11523.33	3175522.11	1393264.72	40°24'40.324"N	104°52'10.823"W	point
BOST FARM 12C-11-L BPZ REV-1 (1599'FSL & 460'FWL, SEC.11)		7121.00	-1068.58	-11113.44	3175931.95	1393270.91	40°24'40.356"N	104°52'05.524"W	point
2) BOST FARM 12C-11-L BPZ REV-2 (1593'FSL & 150'FWL, SEC.11)	17847.70	7121.00	-1070.99	-11423.35	3175622.07	1393266.16	40°24'40.331"N	104°52'09.530"W	point
1) BOST FARM 12C-11-L TOP OF PROD REV-1 (1665'FSL & 150'FEL, SEC.12)	7701.93	7214.00	-994.54	-1278.45	3185765.69	1393419.44	40°24'41.112"N	104°49'58.382"W	point
BOST FARM 12C-11-L TOP OF PROD ON PLAT (1665'FSL & 150'FEL, SEC.12)		7316.00	-994.54	-1278.48	3185765.66	1393419.44	40°24'41.112"N	104°49'58.382"W	point



# Planned Wellpath Report

BOST FARM 12C-11-L (REV-C.0) PWP

Page 10 of 10

**BAKER  
HUGHES**  
a GE company



REFERENCE WELLPATH IDENTIFICATION			
Operator	SRC ENERGY	Slot	SLOT#05 BOST FARM 12C-11-L (2666'FSL & 1134'FWL, SEC.07)
Area	COLORADO	Well	BOST FARM 12C-11-L
Field	WELD COUNTY (NAD83,TRUE NORTH)	Wellbore	BOST FARM 12C-11-L PWB
Facility	SEC.07-T05N-R66W		

SURVEY PROGRAM - Ref Wellbore: BOST FARM 12C-11-L PWB    Ref Wellpath: BOST FARM 12C-11-L (REV-C.0) PWP				
Start MD [ft]	End MD [ft]	Positional Uncertainty Model	Log Name/Comment	Wellbore
4.00	1750.00	BHI NaviTrak (Axial)		BOST FARM 12C-11-L PWB
1750.00	17947.67	BHI AutoTrak Curve (MagCAD+IFR1, Short spacing)		BOST FARM 12C-11-L PWB