

SRC ENERGY

Location: COLORADO Slot: SLOT#06 BOST FARM 33N-11C-L (2666'FSL & 1154'FWL, SEC.07)
Field: WELD COUNTY (NAD83, TRUE NORTH) Well: BOST FARM 33N-11C-L
Facility: SEC.07-T05N-R66W Wellbore: BOST FARM 33N-11C-L PWB

Plot reference wellpath is BOST FARM 33N-11C-L (REV-C.0) PWP	Grid System: NAD83 / Lambert Colorado SP, Northern Zone (501), US feet
True vertical depths are referenced to IKON 12 (4) (RKB)	North Reference: True north
Measured depths are referenced to IKON 12 (4) (RKB)	Scale: True distance
IKON 12 (4) (RKB) to Mean Sea Level: 4878 feet	Depths are in feet
Mean Sea Level to Mud line (At Slot: SLOT#06 BOST FARM 33N-11C-L (2666'FSL & 1154'FWL, SEC.07)): 0 feet	Created by: harisab on 2019-01-03
Coordinates are in feet referenced to Slot	Database: WA DENVER

Location Information

Facility Name				Grid East (US ft)	Grid North (US ft)	Latitude	Longitude
SEC.07-T05N-R66W				3187161.591	1394309.789	40°24'49.806"N	104°49'40.249"W
Slot	Local N (ft)	Local E (ft)	Grid East (US ft)	Grid North (US ft)	Latitude	Longitude	
SLOT#06 BOST FARM 33N-11C-L (2666'FSL & 1154'FWL, SEC.07)	114.76	-104.16	3187056.568	1394423.750	40°24'50.940"N	104°49'41.596"W	
IKON 12 (4) (RKB) to Mud line (At Slot: SLOT#06 BOST FARM 33N-11C-L (2666'FSL & 1154'FWL, SEC.07))						4878ft	
Mean Sea Level to Mud line (At Slot: SLOT#06 BOST FARM 33N-11C-L (2666'FSL & 1154'FWL, SEC.07))						0ft	
IKON 12 (4) (RKB) to Mean Sea Level						4878ft	

Survey Program

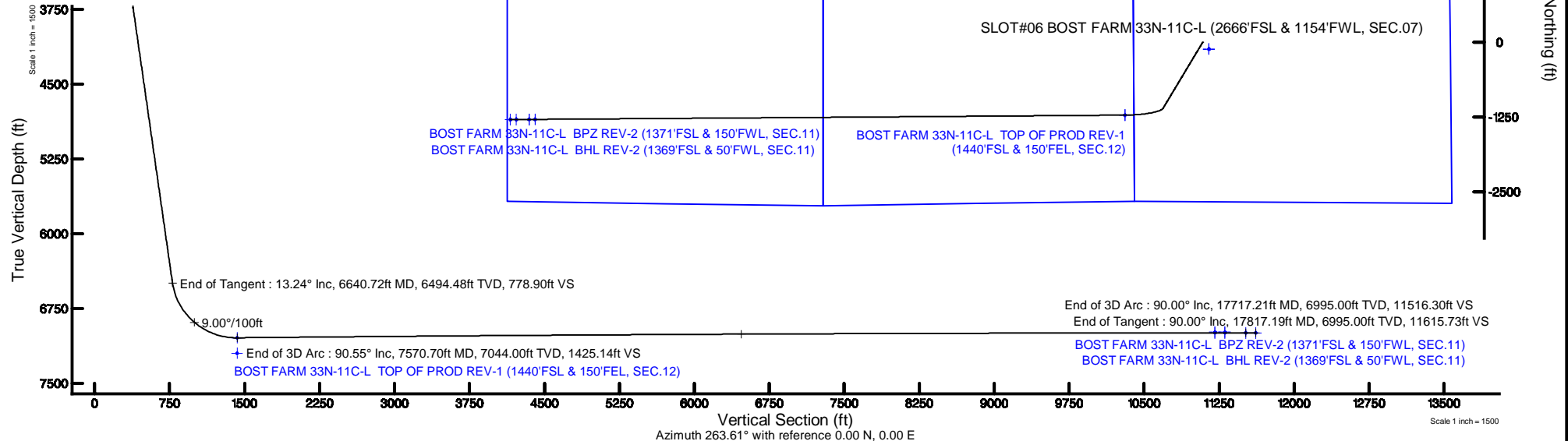
Start MD (ft)	End MD (ft)	Tool	Model	Log Name/Comment	Wellbore
4.00	1750.00	BHI NaviTrak	BHI NaviTrak (Axial)		BOST FARM 33N-11C-L PWB
1750.00	17817.19	BHI AutoTrak Curve	BHI AutoTrak Curve (MagCAD+FR1, Short spacing)		BOST FARM 33N-11C-L PWB



N
TRUE
W
E
MAG

BGGM (1900.0 to 2019.0) Dip: 66.80° Field: 52262 nT
Magnetic North is 8.31 degrees East of True North (at 10/1/2018)

To correct azimuth from Magnetic to True add 8.31 degrees



Targets

Name	MD (ft)	TVD (ft)	Local N (ft)	Local E (ft)	Grid East (US ft)	Grid North (US ft)	Latitude	Longitude	
SEC.07-T05N-R66W		2.00	-114.76	104.16	3187161.59	1394309.79	40°24'49.806"N	104°49'40.249"W	
SEC.11-T05N-R67W		2.00	-114.76	104.16	3187161.59	1394309.79	40°24'49.806"N	104°49'40.249"W	
SEC.12-T05N-R67W		2.00	-114.76	104.16	3187161.59	1394309.79	40°24'49.806"N	104°49'40.249"W	
BOST FARM 33N-11C-L BHL ON PLAT (1376'FSL & 360'FWL, SEC.11)		6987.00	-1291.12	-11233.53	3175933.60	1393047.62	40°24'38.156"N	104°52'06.816"W	
BOST FARM 33N-11C-L BPZ ON PLAT (1378'FSL & 460'FWL, SEC.11)		6987.00	-1290.44	-11133.56	3175933.56	1393049.06	40°24'38.164"N	104°52'05.524"W	
BOST FARM 33N-11C-L BHL REV-1 (1376'FSL & 360'FWL, SEC.11)		6995.00	-1291.16	-11233.53	3175933.60	1393047.58	40°24'38.156"N	104°52'06.816"W	
BOST FARM 33N-11C-L BHL REV-2 (1369'FSL & 50'FWL, SEC.11)	17817.19	6995.00	-1293.53	-11543.48	3175923.69	1393048.87	40°24'38.131"N	104°52'10.823"W	
BOST FARM 33N-11C-L BPZ REV-1 (1378'FSL & 460'FWL, SEC.11)		6995.00	-1290.40	-11133.59	3175933.53	1393049.10	40°24'38.164"N	104°52'05.524"W	
BOST FARM 33N-11C-L BPZ REV-2 (1371'FSL & 150'FWL, SEC.11)	17717.21	6995.00	-1292.84	-11443.51	3175923.65	1393044.81	40°24'38.130"N	104°52'09.530"W	
BOST FARM 33N-11C-L TOP OF PROD REV-1 (1440'FSL & 150'FSL, SEC.12)		7570.70	7044.00	-1219.30	-1297.43	3185768.47	1393194.71	40°24'38.891"N	104°49'58.368"W
BOST FARM 33N-11C-L TOP OF PROD ON PLAT (1440'FSL & 150'FSL, SEC.12)		7199.00	-1219.32	-1297.43	3185768.47	1393194.69	40°24'38.891"N	104°49'58.368"W	

Hole and Casing Sections

Name	Start MD (ft)	End MD (ft)	Interval (ft)	Start TVD (ft)	End TVD (ft)	Start Local N (ft)	Start Local E (ft)	End Local N (ft)	End Local E (ft)	Wellbore
13.Sin Open Hole	4.00	1750.00	1746.00	4.00	1733.81	0.00	0.00	-141.60	-84.76	BOST FARM 33N-11C-L PWB
9.625in Casing Surface	4.00	1750.00	1746.00	4.00	1733.81	0.00	0.00	-141.60	-84.76	BOST FARM 33N-11C-L PWB
8.5in Open Hole	1750.00	17817.19	16067.19	1733.81	6995.00	-141.60	-84.76	-1293.53	-11543.48	BOST FARM 33N-11C-L PWB

Well Profile Data

Design Comment	MD (ft)	Inc (°)	Az (°)	TVD (ft)	Local N (ft)	Local E (ft)	DLS (°/100ft)	VS (ft)
Tie On	4.00	0.000	210.906	4.00	0.00	0.00	0.00	0.00
End of Tangent	700.00	0.000	210.906	700.00	0.00	0.00	0.00	0.00
End of Build	1362.12	13.242	210.906	1356.24	-65.36	-39.13	2.00	46.16
End of Tangent	6640.72	13.242	210.906	6494.48	-1102.86	-660.19	0.00	778.90
End of 3D Arc	7570.70	90.553	269.560	7044.00	-1219.30	-1297.43	9.00	1425.14
End of 3D Arc	17717.21	90.000	269.609	6995.00	-1292.84	-11443.51	0.01	11516.30
End of Tangent	17817.19	90.000	269.609	6995.00	-1293.53	-11543.48	0.00	11615.73

BOST FARM 33N-11C-L (REV-C.0) LAS.las

~VERSION INFORMATION

VERS. 2.0 : CWLS LOG ASCII STANDARD-VERSION 2.0

WRAP. NO : ASCII DATA SECTION CONTAINS ONE ROW PER WELLPATH STATION

~WELL INFORMATION

#MNEM	.UNITS	DATA	:DESCRIPTION
#----	.-----	----	:-----
STRT	.ft	0.00	:START MD
STOP	.ft	17817.19	:STOP MD
STEP	.ft	0.0	:STEP (non-uniform increment)
NULL	.	-999.99	:NULL
COMP	.	SRC ENERGY	:OPERATOR
WELL	.	BOST FARM 33N-11C-L	:WELL
FLD	.	WELD COUNTY (NAD83,TRUE NORTH)	:FIELD
LOC	.	COLORADO	:AREA (aka: Location)
CNTY	.	N/A	:COUNTY
STAT	.	N/A	:STATE
CTRY	.	N/A	:COUNTRY
SRVC	.	Baker Hughes	:CONTRACTOR
DATE	.	09/24/2018	:LOG REV DATE
API	.		:API NUMBER

~OTHER INFORMATION

#Software: WellArchitect(R) Version 5.1

#MNEM	.UNITS	DATA	:DESCRIPTION
#----	.-----	----	:-----
WPTYPE	.	PLANNED WELLPATH	:WELLPATH TYPE
FACILITY	.	SEC.07-T05N-R66W	:FACILITY
SLOT	.	SLOT#06 BOST FARM 33N-11C-L (2666'FSL & 1154'FWL, SEC.07)	:SLOT
WELLBORE	.	BOST FARM 33N-11C-L PWB	:WELLBORE
WELLPATH	.	BOST FARM 33N-11C-L (REV-C.0) PWP	:WELLPATH
MDREFPT	.	IKON 12 (4') (RKB)	:MD REFERENCE POINT
TVDREFPT	.	IKON 12 (4') (RKB)	:TVD REFERENCE POINT
LCLREFPT	.	Slot	:LOCAL COORDINATE REFERENCE PT

BOST FARM 33N-11C-L (REV-C.0) LAS.las

VSAZIMUTH.deg	263.61	:VERTICAL SECTION AZIMUTH
VSORIGN .ft	0.00	:VERTICAL SECTION ORIGIN NORTH
VSORIGE .ft	0.00	:VERTICAL SECTION ORIGIN EAST

~CURVE (WELLPATH) INFORMATION

#MNEM	.UNITS	:DESCRIPTION
#----	.-----	:-----
DEPT	.ft	:MEASURED DEPTH
INC	.deg	:INCLINATION
AZI	.deg	:AZIMUTH
TVD	.ft	:TRUE VERTICAL DEPTH
SECT	.ft	:CROSS SECTION (CURTAIN/VERTICAL)
LOCALN	.ft	:LOCAL NORTH
LOCALE	.ft	:LOCAL EAST
LAT	.deg	:LATITUDE
LONG	.deg	:LONGITUDE
DLS	.deg/100ft	:DOGLEG SEVERITY

~ASCII DATA

0.00	0.00	210.91	0.00	0.00	0.00	0.00	40.4141500	-104.8282210	0.00
4.00	0.00	210.91	4.00	0.00	0.00	0.00	40.4141500	-104.8282210	0.00
104.00	0.00	210.91	104.00	0.00	0.00	0.00	40.4141500	-104.8282210	0.00
204.00	0.00	210.91	204.00	0.00	0.00	0.00	40.4141500	-104.8282210	0.00
304.00	0.00	210.91	304.00	0.00	0.00	0.00	40.4141500	-104.8282210	0.00
404.00	0.00	210.91	404.00	0.00	0.00	0.00	40.4141500	-104.8282210	0.00
504.00	0.00	210.91	504.00	0.00	0.00	0.00	40.4141500	-104.8282210	0.00
604.00	0.00	210.91	604.00	0.00	0.00	0.00	40.4141500	-104.8282210	0.00
700.00	0.00	210.91	700.00	0.00	0.00	0.00	40.4141500	-104.8282210	0.00
704.00	0.08	210.91	704.00	0.00	0.00	0.00	40.4141500	-104.8282210	2.00
804.00	2.08	210.91	803.98	1.14	-1.62	-0.97	40.4141456	-104.8282245	2.00
904.00	4.08	210.91	903.83	4.40	-6.23	-3.73	40.4141329	-104.8282344	2.00
1004.00	6.08	210.91	1003.43	9.77	-13.83	-8.28	40.4141120	-104.8282507	2.00
1104.00	8.08	210.91	1102.66	17.23	-24.40	-14.61	40.4140830	-104.8282735	2.00
1204.00	10.08	210.91	1201.40	26.80	-37.94	-22.71	40.4140459	-104.8283026	2.00

BOST FARM 33N-11C-L (REV-C.0) LAS.las

1304.00	12.08	210.91	1299.54	38.44	-54.43	-32.58	40.4140006	-104.8283380	2.00
1362.12	13.24	210.91	1356.24	46.16	-65.36	-39.13	40.4139706	-104.8283615	2.00
1404.00	13.24	210.91	1397.01	51.97	-73.59	-44.05	40.4139480	-104.8283792	0.00
1504.00	13.24	210.91	1494.35	65.86	-93.25	-55.82	40.4138940	-104.8284215	0.00
1604.00	13.24	210.91	1591.69	79.74	-112.90	-67.58	40.4138401	-104.8284637	0.00
1704.00	13.24	210.91	1689.03	93.62	-132.56	-79.35	40.4137861	-104.8285060	0.00
1804.00	13.24	210.91	1786.37	107.50	-152.21	-91.12	40.4137322	-104.8285482	0.00
1904.00	13.24	210.91	1883.71	121.38	-171.87	-102.88	40.4136782	-104.8285905	0.00
2004.00	13.24	210.91	1981.05	135.26	-191.52	-114.65	40.4136243	-104.8286327	0.00
2104.00	13.24	210.91	2078.39	149.14	-211.17	-126.41	40.4135703	-104.8286750	0.00
2204.00	13.24	210.91	2175.73	163.02	-230.83	-138.18	40.4135164	-104.8287172	0.00
2304.00	13.24	210.91	2273.08	176.91	-250.48	-149.94	40.4134624	-104.8287595	0.00
2404.00	13.24	210.91	2370.42	190.79	-270.14	-161.71	40.4134085	-104.8288017	0.00
2504.00	13.24	210.91	2467.76	204.67	-289.79	-173.48	40.4133545	-104.8288440	0.00
2604.00	13.24	210.91	2565.10	218.55	-309.45	-185.24	40.4133006	-104.8288862	0.00
2704.00	13.24	210.91	2662.44	232.43	-329.10	-197.01	40.4132466	-104.8289285	0.00
2804.00	13.24	210.91	2759.78	246.31	-348.76	-208.77	40.4131927	-104.8289707	0.00
2904.00	13.24	210.91	2857.12	260.19	-368.41	-220.54	40.4131387	-104.8290130	0.00
3004.00	13.24	210.91	2954.46	274.07	-388.07	-232.30	40.4130848	-104.8290552	0.00
3104.00	13.24	210.91	3051.80	287.96	-407.72	-244.07	40.4130308	-104.8290975	0.00
3204.00	13.24	210.91	3149.14	301.84	-427.38	-255.84	40.4129769	-104.8291397	0.00
3304.00	13.24	210.91	3246.49	315.72	-447.03	-267.60	40.4129229	-104.8291820	0.00
3404.00	13.24	210.91	3343.83	329.60	-466.69	-279.37	40.4128690	-104.8292242	0.00
3504.00	13.24	210.91	3441.17	343.48	-486.34	-291.13	40.4128150	-104.8292665	0.00
3604.00	13.24	210.91	3538.51	357.36	-506.00	-302.90	40.4127611	-104.8293087	0.00
3704.00	13.24	210.91	3635.85	371.24	-525.65	-314.66	40.4127071	-104.8293510	0.00
3804.00	13.24	210.91	3733.19	385.13	-545.31	-326.43	40.4126532	-104.8293932	0.00
3904.00	13.24	210.91	3830.53	399.01	-564.96	-338.20	40.4125992	-104.8294355	0.00
4004.00	13.24	210.91	3927.87	412.89	-584.62	-349.96	40.4125453	-104.8294777	0.00
4104.00	13.24	210.91	4025.21	426.77	-604.27	-361.73	40.4124913	-104.8295200	0.00
4204.00	13.24	210.91	4122.55	440.65	-623.92	-373.49	40.4124374	-104.8295622	0.00
4304.00	13.24	210.91	4219.89	454.53	-643.58	-385.26	40.4123834	-104.8296045	0.00
4404.00	13.24	210.91	4317.24	468.41	-663.23	-397.02	40.4123295	-104.8296467	0.00
4504.00	13.24	210.91	4414.58	482.29	-682.89	-408.79	40.4122755	-104.8296890	0.00

BOST FARM 33N-11C-L (REV-C.0) LAS.las

4604.00	13.24	210.91	4511.92	496.18	-702.54	-420.56	40.4122216	-104.8297312	0.00
4704.00	13.24	210.91	4609.26	510.06	-722.20	-432.32	40.4121676	-104.8297735	0.00
4804.00	13.24	210.91	4706.60	523.94	-741.85	-444.09	40.4121137	-104.8298157	0.00
4904.00	13.24	210.91	4803.94	537.82	-761.51	-455.85	40.4120597	-104.8298580	0.00
5004.00	13.24	210.91	4901.28	551.70	-781.16	-467.62	40.4120058	-104.8299002	0.00
5104.00	13.24	210.91	4998.62	565.58	-800.82	-479.38	40.4119518	-104.8299425	0.00
5204.00	13.24	210.91	5095.96	579.46	-820.47	-491.15	40.4118979	-104.8299847	0.00
5304.00	13.24	210.91	5193.30	593.34	-840.13	-502.92	40.4118439	-104.8300270	0.00
5404.00	13.24	210.91	5290.64	607.23	-859.78	-514.68	40.4117900	-104.8300692	0.00
5504.00	13.24	210.91	5387.99	621.11	-879.44	-526.45	40.4117360	-104.8301115	0.00
5604.00	13.24	210.91	5485.33	634.99	-899.09	-538.21	40.4116821	-104.8301537	0.00
5704.00	13.24	210.91	5582.67	648.87	-918.75	-549.98	40.4116281	-104.8301960	0.00
5804.00	13.24	210.91	5680.01	662.75	-938.40	-561.74	40.4115742	-104.8302382	0.00
5904.00	13.24	210.91	5777.35	676.63	-958.06	-573.51	40.4115202	-104.8302805	0.00
6004.00	13.24	210.91	5874.69	690.51	-977.71	-585.28	40.4114663	-104.8303227	0.00
6104.00	13.24	210.91	5972.03	704.39	-997.36	-597.04	40.4114123	-104.8303650	0.00
6204.00	13.24	210.91	6069.37	718.28	-1017.02	-608.81	40.4113584	-104.8304072	0.00
6304.00	13.24	210.91	6166.71	732.16	-1036.67	-620.57	40.4113044	-104.8304495	0.00
6404.00	13.24	210.91	6264.05	746.04	-1056.33	-632.34	40.4112505	-104.8304917	0.00
6504.00	13.24	210.91	6361.40	759.92	-1075.98	-644.10	40.4111965	-104.8305340	0.00
6604.00	13.24	210.91	6458.74	773.80	-1095.64	-655.87	40.4111426	-104.8305762	0.00
6640.72	13.24	210.91	6494.48	778.90	-1102.86	-660.19	40.4111228	-104.8305917	0.00
6704.00	16.87	227.99	6555.61	790.76	-1115.23	-670.74	40.4110888	-104.8306296	9.00
6804.00	24.24	242.97	6649.24	821.83	-1134.31	-699.87	40.4110364	-104.8307342	9.00
6904.00	32.41	251.02	6737.23	867.29	-1152.39	-743.59	40.4109868	-104.8308912	9.00
7004.00	40.90	256.05	6817.40	926.02	-1169.03	-800.82	40.4109411	-104.8310967	9.00
7104.00	49.54	259.59	6887.78	996.57	-1183.83	-870.15	40.4109005	-104.8313457	9.00
7204.00	58.27	262.32	6946.64	1077.20	-1196.41	-949.88	40.4108659	-104.8316320	9.00
7304.00	67.05	264.57	6992.53	1165.93	-1206.47	-1038.04	40.4108383	-104.8319485	9.00
7404.00	75.85	266.55	7024.32	1260.58	-1213.76	-1132.46	40.4108183	-104.8322876	9.00
7504.00	84.67	268.38	7041.22	1358.81	-1218.10	-1230.82	40.4108064	-104.8326408	9.00
7570.70	90.55	269.56	7044.00	1425.14	-1219.30	-1297.43	40.4108031	-104.8328800	9.00
7604.00	90.55	269.56	7043.68	1458.25	-1219.56	-1330.72	40.4108023	-104.8329996	0.01
7704.00	90.55	269.56	7042.72	1557.71	-1220.32	-1430.71	40.4108002	-104.8333586	0.01

BOST FARM 33N-11C-L (REV-C.0) LAS.las

7804.00	90.54	269.56	7041.77	1657.16	-1221.09	-1530.71	40.4107981	-104.8337177	0.01
7904.00	90.54	269.56	7040.83	1756.62	-1221.85	-1630.70	40.4107960	-104.8340768	0.01
8004.00	90.53	269.56	7039.90	1856.08	-1222.62	-1730.69	40.4107939	-104.8344358	0.01
8104.00	90.52	269.56	7038.98	1955.53	-1223.38	-1830.68	40.4107918	-104.8347949	0.01
8204.00	90.52	269.56	7038.07	2054.99	-1224.14	-1930.68	40.4107896	-104.8351540	0.01
8304.00	90.51	269.56	7037.17	2154.44	-1224.91	-2030.67	40.4107875	-104.8355130	0.01
8404.00	90.51	269.56	7036.28	2253.90	-1225.67	-2130.66	40.4107854	-104.8358721	0.01
8504.00	90.50	269.57	7035.40	2353.36	-1226.43	-2230.66	40.4107833	-104.8362312	0.01
8604.00	90.50	269.57	7034.53	2452.81	-1227.19	-2330.65	40.4107812	-104.8365903	0.01
8704.00	90.49	269.57	7033.67	2552.27	-1227.94	-2430.64	40.4107791	-104.8369493	0.01
8804.00	90.49	269.57	7032.81	2651.72	-1228.70	-2530.64	40.4107770	-104.8373084	0.01
8904.00	90.48	269.57	7031.97	2751.18	-1229.46	-2630.63	40.4107749	-104.8376675	0.01
9004.00	90.48	269.57	7031.13	2850.64	-1230.21	-2730.62	40.4107728	-104.8380265	0.01
9104.00	90.47	269.57	7030.31	2950.09	-1230.97	-2830.62	40.4107707	-104.8383856	0.01
9204.00	90.46	269.57	7029.49	3049.55	-1231.72	-2930.61	40.4107686	-104.8387447	0.01
9304.00	90.46	269.57	7028.69	3149.00	-1232.48	-3030.60	40.4107665	-104.8391038	0.01
9404.00	90.45	269.57	7027.89	3248.46	-1233.23	-3130.60	40.4107644	-104.8394628	0.01
9504.00	90.45	269.57	7027.11	3347.91	-1233.98	-3230.59	40.4107623	-104.8398219	0.01
9604.00	90.44	269.57	7026.33	3447.37	-1234.73	-3330.59	40.4107602	-104.8401810	0.01
9704.00	90.44	269.57	7025.56	3546.83	-1235.48	-3430.58	40.4107581	-104.8405401	0.01
9804.00	90.43	269.57	7024.80	3646.28	-1236.23	-3530.58	40.4107560	-104.8408991	0.01
9904.00	90.43	269.57	7024.06	3745.74	-1236.98	-3630.57	40.4107539	-104.8412582	0.01
10004.00	90.42	269.57	7023.32	3845.19	-1237.73	-3730.56	40.4107518	-104.8416173	0.01
10104.00	90.42	269.57	7022.59	3944.65	-1238.47	-3830.56	40.4107497	-104.8419764	0.01
10204.00	90.41	269.57	7021.87	4044.11	-1239.22	-3930.55	40.4107476	-104.8423354	0.01
10304.00	90.40	269.57	7021.16	4143.56	-1239.96	-4030.55	40.4107455	-104.8426945	0.01
10404.00	90.40	269.57	7020.46	4243.02	-1240.71	-4130.54	40.4107434	-104.8430536	0.01
10504.00	90.39	269.57	7019.76	4342.47	-1241.45	-4230.54	40.4107414	-104.8434127	0.01
10604.00	90.39	269.58	7019.08	4441.93	-1242.19	-4330.53	40.4107393	-104.8437717	0.01
10704.00	90.38	269.58	7018.41	4541.38	-1242.93	-4430.53	40.4107372	-104.8441308	0.01
10804.00	90.38	269.58	7017.75	4640.84	-1243.67	-4530.52	40.4107351	-104.8444899	0.01
10904.00	90.37	269.58	7017.09	4740.29	-1244.41	-4630.52	40.4107330	-104.8448490	0.01
11004.00	90.37	269.58	7016.45	4839.75	-1245.15	-4730.51	40.4107309	-104.8452080	0.01
11104.00	90.36	269.58	7015.82	4939.21	-1245.89	-4830.51	40.4107289	-104.8455671	0.01

BOST FARM 33N-11C-L (REV-C.0) LAS.las

11204.00	90.36	269.58	7015.19	5038.66	-1246.63	-4930.50	40.4107268	-104.8459262	0.01
11304.00	90.35	269.58	7014.58	5138.12	-1247.36	-5030.50	40.4107247	-104.8462853	0.01
11404.00	90.34	269.58	7013.97	5237.57	-1248.10	-5130.49	40.4107226	-104.8466444	0.01
11504.00	90.34	269.58	7013.37	5337.03	-1248.84	-5230.49	40.4107206	-104.8470034	0.01
11604.00	90.33	269.58	7012.79	5436.48	-1249.57	-5330.49	40.4107185	-104.8473625	0.01
11704.00	90.33	269.58	7012.21	5535.94	-1250.30	-5430.48	40.4107164	-104.8477216	0.01
11804.00	90.32	269.58	7011.64	5635.39	-1251.03	-5530.48	40.4107143	-104.8480807	0.01
11904.00	90.32	269.58	7011.08	5734.85	-1251.77	-5630.47	40.4107123	-104.8484398	0.01
12004.00	90.31	269.58	7010.54	5834.30	-1252.50	-5730.47	40.4107102	-104.8487988	0.01
12104.00	90.31	269.58	7010.00	5933.76	-1253.23	-5830.46	40.4107081	-104.8491579	0.01
12204.00	90.30	269.58	7009.47	6033.21	-1253.96	-5930.46	40.4107061	-104.8495170	0.01
12304.00	90.30	269.58	7008.95	6132.67	-1254.68	-6030.46	40.4107040	-104.8498761	0.01
12404.00	90.29	269.58	7008.44	6232.12	-1255.41	-6130.45	40.4107019	-104.8502351	0.01
12504.00	90.28	269.58	7007.94	6331.58	-1256.14	-6230.45	40.4106999	-104.8505942	0.01
12604.00	90.28	269.58	7007.44	6431.03	-1256.86	-6330.44	40.4106978	-104.8509533	0.01
12704.00	90.27	269.58	7006.96	6530.49	-1257.59	-6430.44	40.4106958	-104.8513124	0.01
12804.00	90.27	269.58	7006.49	6629.94	-1258.31	-6530.44	40.4106937	-104.8516715	0.01
12904.00	90.26	269.59	7006.03	6729.40	-1259.03	-6630.43	40.4106916	-104.8520306	0.01
13004.00	90.26	269.59	7005.57	6828.85	-1259.76	-6730.43	40.4106896	-104.8523896	0.01
13104.00	90.25	269.59	7005.13	6928.31	-1260.48	-6830.43	40.4106875	-104.8527487	0.01
13204.00	90.25	269.59	7004.69	7027.76	-1261.20	-6930.42	40.4106855	-104.8531078	0.01
13304.00	90.24	269.59	7004.27	7127.22	-1261.92	-7030.42	40.4106834	-104.8534669	0.01
13404.00	90.24	269.59	7003.85	7226.67	-1262.64	-7130.42	40.4106814	-104.8538260	0.01
13504.00	90.23	269.59	7003.45	7326.13	-1263.36	-7230.41	40.4106793	-104.8541850	0.01
13604.00	90.22	269.59	7003.05	7425.58	-1264.07	-7330.41	40.4106773	-104.8545441	0.01
13704.00	90.22	269.59	7002.67	7525.04	-1264.79	-7430.41	40.4106752	-104.8549032	0.01
13804.00	90.21	269.59	7002.29	7624.49	-1265.50	-7530.40	40.4106732	-104.8552623	0.01
13904.00	90.21	269.59	7001.92	7723.95	-1266.22	-7630.40	40.4106711	-104.8556214	0.01
14004.00	90.20	269.59	7001.56	7823.40	-1266.93	-7730.40	40.4106691	-104.8559805	0.01
14104.00	90.20	269.59	7001.21	7922.85	-1267.65	-7830.39	40.4106670	-104.8563395	0.01
14204.00	90.19	269.59	7000.87	8022.31	-1268.36	-7930.39	40.4106650	-104.8566986	0.01
14304.00	90.19	269.59	7000.54	8121.76	-1269.07	-8030.39	40.4106630	-104.8570577	0.01
14404.00	90.18	269.59	7000.22	8221.22	-1269.78	-8130.38	40.4106609	-104.8574168	0.01
14504.00	90.18	269.59	6999.91	8320.67	-1270.49	-8230.38	40.4106589	-104.8577759	0.01

BOST FARM 33N-11C-L (REV-C.0) LAS.las

14604.00	90.17	269.59	6999.61	8420.12	-1271.20	-8330.38	40.4106568	-104.8581350	0.01
14704.00	90.16	269.60	6999.32	8519.58	-1271.91	-8430.37	40.4106548	-104.8584940	0.01
14804.00	90.16	269.60	6999.04	8619.03	-1272.61	-8530.37	40.4106528	-104.8588531	0.01
14904.00	90.15	269.60	6998.77	8718.49	-1273.32	-8630.37	40.4106507	-104.8592122	0.01
15004.00	90.15	269.60	6998.50	8817.94	-1274.03	-8730.37	40.4106487	-104.8595713	0.01
15104.00	90.14	269.60	6998.25	8917.39	-1274.73	-8830.36	40.4106467	-104.8599304	0.01
15204.00	90.14	269.60	6998.01	9016.85	-1275.43	-8930.36	40.4106446	-104.8602895	0.01
15304.00	90.13	269.60	6997.77	9116.30	-1276.14	-9030.36	40.4106426	-104.8606485	0.01
15404.00	90.13	269.60	6997.55	9215.75	-1276.84	-9130.36	40.4106406	-104.8610076	0.01
15504.00	90.12	269.60	6997.33	9315.21	-1277.54	-9230.35	40.4106386	-104.8613667	0.01
15604.00	90.12	269.60	6997.13	9414.66	-1278.24	-9330.35	40.4106365	-104.8617258	0.01
15704.00	90.11	269.60	6996.93	9514.11	-1278.94	-9430.35	40.4106345	-104.8620849	0.01
15804.00	90.10	269.60	6996.74	9613.57	-1279.64	-9530.34	40.4106325	-104.8624440	0.01
15904.00	90.10	269.60	6996.56	9713.02	-1280.34	-9630.34	40.4106305	-104.8628030	0.01
16004.00	90.09	269.60	6996.40	9812.47	-1281.03	-9730.34	40.4106284	-104.8631621	0.01
16104.00	90.09	269.60	6996.24	9911.93	-1281.73	-9830.34	40.4106264	-104.8635212	0.01
16204.00	90.08	269.60	6996.09	10011.38	-1282.42	-9930.33	40.4106244	-104.8638803	0.01
16304.00	90.08	269.60	6995.95	10110.83	-1283.12	-10030.33	40.4106224	-104.8642394	0.01
16404.00	90.07	269.60	6995.82	10210.29	-1283.81	-10130.33	40.4106204	-104.8645985	0.01
16504.00	90.07	269.60	6995.70	10309.74	-1284.51	-10230.33	40.4106184	-104.8649575	0.01
16604.00	90.06	269.60	6995.59	10409.19	-1285.20	-10330.32	40.4106163	-104.8653166	0.01
16704.00	90.06	269.60	6995.49	10508.64	-1285.89	-10430.32	40.4106143	-104.8656757	0.01
16804.00	90.05	269.61	6995.40	10608.10	-1286.58	-10530.32	40.4106123	-104.8660348	0.01
16904.00	90.04	269.61	6995.31	10707.55	-1287.27	-10630.32	40.4106103	-104.8663939	0.01
17004.00	90.04	269.61	6995.24	10807.00	-1287.96	-10730.31	40.4106083	-104.8667530	0.01
17104.00	90.03	269.61	6995.18	10906.45	-1288.65	-10830.31	40.4106063	-104.8671121	0.01
17204.00	90.03	269.61	6995.13	11005.91	-1289.33	-10930.31	40.4106043	-104.8674711	0.01
17304.00	90.02	269.61	6995.08	11105.36	-1290.02	-11030.31	40.4106023	-104.8678302	0.01
17404.00	90.02	269.61	6995.05	11204.81	-1290.70	-11130.31	40.4106003	-104.8681893	0.01
17504.00	90.01	269.61	6995.02	11304.26	-1291.39	-11230.30	40.4105983	-104.8685484	0.01
17604.00	90.01	269.61	6995.01	11403.71	-1292.07	-11330.30	40.4105963	-104.8689075	0.01
17704.00	90.00	269.61	6995.00	11503.16	-1292.75	-11430.30	40.4105943	-104.8692666	0.01
17717.21	90.00	269.61	6995.00	11516.30	-1292.84	-11443.51	40.4105940	-104.8693140	0.01
17804.00	90.00	269.61	6995.00	11602.62	-1293.44	-11530.30	40.4105923	-104.8696257	0.00

BOST FARM 33N-11C-L (REV-C.0) LAS.las

17817.19	90.00	269.61	6995.00	11615.73	-1293.53	-11543.48	40.4105920	-104.8696730	0.00
----------	-------	--------	---------	----------	----------	-----------	------------	--------------	------



Planned Wellpath Report

BOST FARM 33N-11C-L (REV-C.0) PWP

Page 1 of 10



REFERENCE WELLPATH IDENTIFICATION

Operator	SRC ENERGY	Slot	SLOT#06 BOST FARM 33N-11C-L (2666'FSL & 1154'FWL, SEC.07)
Area	COLORADO	Well	BOST FARM 33N-11C-L
Field	WELD COUNTY (NAD83,TRUE NORTH)	Wellbore	BOST FARM 33N-11C-L PWB
Facility	SEC.07-T05N-R66W		

REPORT SETUP INFORMATION

Projection System	NAD83 / Lambert Colorado SP, Northern Zone (501), US feet	Software System	WellArchitect® 5.1
North Reference	True	User	Bushjamh
Scale	0.999961	Report Generated	01/03/2019 at 14:08
Convergence at slot	0.43° East	Database/Source file	WA_DEN_Denver_Defn/BOST FARM 33N-11C-L (REV-C.0) PWP PR.xml

WELLPATH LOCATION

	Local coordinates		Grid coordinates		Geographic coordinates	
	North[ft]	East[ft]	Easting[US ft]	Northing[US ft]	Latitude	Longitude
Slot Location	114.76	-104.16	3187056.57	1394423.75	40°24'50.940"N	104°49'41.596"W
Facility Reference Pt			3187161.59	1394309.79	40°24'49.806"N	104°49'40.249"W
Field Reference Pt			3171284.48	1426358.81	40°30'07.643"N	104°53'02.634"W

WELLPATH DATUM

Calculation method	Minimum curvature	IKON 12 (4') (RKB) to Facility Vertical Datum	4878.00ft
Horizontal Reference Pt	Slot	IKON 12 (4') (RKB) to Mean Sea Level	4878.00ft
Vertical Reference Pt	IKON 12 (4') (RKB)	IKON 12 (4') (RKB) to Mud Line at Slot (SLOT#06 BOST FARM 33N-11C-L (2666'FSL & 1154'FWL, SEC.07))	4878.00ft
MD Reference Pt	IKON 12 (4') (RKB)	Section Origin	N 0.00, E 0.00 ft
Field Vertical Reference	Mean Sea Level	Section Azimuth	263.61°



Planned Wellpath Report

BOST FARM 33N-11C-L (REV-C.0) PWP

Page 2 of 10



REFERENCE WELLPATH IDENTIFICATION

Operator	SRC ENERGY	Slot	SLOT#06 BOST FARM 33N-11C-L (2666'FSL & 1154'FWL, SEC.07)
Area	COLORADO	Well	BOST FARM 33N-11C-L
Field	WELD COUNTY (NAD83,TRUE NORTH)	Wellbore	BOST FARM 33N-11C-L PWB
Facility	SEC.07-T05N-R66W		

WELLPATH DATA (186 stations) † = interpolated/extrapolated station

MD [ft]	Inclination [°]	Azimuth [°]	TVD [ft]	Vert Sect [ft]	North [ft]	East [ft]	Latitude	Longitude	DLS [°/100ft]	Comments
0.00†	0.000	210.906	0.00	0.00	0.00	0.00	40°24'50.940"N	104°49'41.596"W	0.00	
4.00	0.000	210.906	4.00	0.00	0.00	0.00	40°24'50.940"N	104°49'41.596"W	0.00	Tie On
104.00†	0.000	210.906	104.00	0.00	0.00	0.00	40°24'50.940"N	104°49'41.596"W	0.00	
204.00†	0.000	210.906	204.00	0.00	0.00	0.00	40°24'50.940"N	104°49'41.596"W	0.00	
304.00†	0.000	210.906	304.00	0.00	0.00	0.00	40°24'50.940"N	104°49'41.596"W	0.00	
404.00†	0.000	210.906	404.00	0.00	0.00	0.00	40°24'50.940"N	104°49'41.596"W	0.00	
504.00†	0.000	210.906	504.00	0.00	0.00	0.00	40°24'50.940"N	104°49'41.596"W	0.00	
604.00†	0.000	210.906	604.00	0.00	0.00	0.00	40°24'50.940"N	104°49'41.596"W	0.00	
700.00	0.000	210.906	700.00	0.00	0.00	0.00	40°24'50.940"N	104°49'41.596"W	0.00	End of Tangent
704.00†	0.080	210.906	704.00	0.00	0.00	0.00	40°24'50.940"N	104°49'41.596"W	2.00	
804.00†	2.080	210.906	803.98	1.14	-1.62	-0.97	40°24'50.924"N	104°49'41.608"W	2.00	
904.00†	4.080	210.906	903.83	4.40	-6.23	-3.73	40°24'50.878"N	104°49'41.644"W	2.00	
1004.00†	6.080	210.906	1003.43	9.77	-13.83	-8.28	40°24'50.803"N	104°49'41.703"W	2.00	
1104.00†	8.080	210.906	1102.66	17.23	-24.40	-14.61	40°24'50.699"N	104°49'41.784"W	2.00	
1204.00†	10.080	210.906	1201.40	26.80	-37.94	-22.71	40°24'50.565"N	104°49'41.889"W	2.00	
1304.00†	12.080	210.906	1299.54	38.44	-54.43	-32.58	40°24'50.402"N	104°49'42.017"W	2.00	
1362.12	13.242	210.906	1356.24	46.16	-65.36	-39.13	40°24'50.294"N	104°49'42.101"W	2.00	End of Build
1404.00†	13.242	210.906	1397.01	51.97	-73.59	-44.05	40°24'50.213"N	104°49'42.165"W	0.00	
1504.00†	13.242	210.906	1494.35	65.86	-93.25	-55.82	40°24'50.019"N	104°49'42.317"W	0.00	
1604.00†	13.242	210.906	1591.69	79.74	-112.90	-67.58	40°24'49.824"N	104°49'42.469"W	0.00	
1704.00†	13.242	210.906	1689.03	93.62	-132.56	-79.35	40°24'49.630"N	104°49'42.621"W	0.00	
1804.00†	13.242	210.906	1786.37	107.50	-152.21	-91.12	40°24'49.436"N	104°49'42.774"W	0.00	
1904.00†	13.242	210.906	1883.71	121.38	-171.87	-102.88	40°24'49.242"N	104°49'42.926"W	0.00	
2004.00†	13.242	210.906	1981.05	135.26	-191.52	-114.65	40°24'49.047"N	104°49'43.078"W	0.00	
2104.00†	13.242	210.906	2078.39	149.14	-211.17	-126.41	40°24'48.853"N	104°49'43.230"W	0.00	
2204.00†	13.242	210.906	2175.73	163.02	-230.83	-138.18	40°24'48.659"N	104°49'43.382"W	0.00	
2304.00†	13.242	210.906	2273.08	176.91	-250.48	-149.94	40°24'48.465"N	104°49'43.534"W	0.00	
2404.00†	13.242	210.906	2370.42	190.79	-270.14	-161.71	40°24'48.271"N	104°49'43.686"W	0.00	
2504.00†	13.242	210.906	2467.76	204.67	-289.79	-173.48	40°24'48.076"N	104°49'43.838"W	0.00	
2604.00†	13.242	210.906	2565.10	218.55	-309.45	-185.24	40°24'47.882"N	104°49'43.990"W	0.00	



Planned Wellpath Report

BOST FARM 33N-11C-L (REV-C.0) PWP

Page 3 of 10



REFERENCE WELLPATH IDENTIFICATION

Operator	SRC ENERGY	Slot	SLOT#06 BOST FARM 33N-11C-L (2666'FSL & 1154'FWL, SEC.07)
Area	COLORADO	Well	BOST FARM 33N-11C-L
Field	WELD COUNTY (NAD83,TRUE NORTH)	Wellbore	BOST FARM 33N-11C-L PWB
Facility	SEC.07-T05N-R66W		

WELLPATH DATA (186 stations) † = interpolated/extrapolated station

MD [ft]	Inclination [°]	Azimuth [°]	TVD [ft]	Vert Sect [ft]	North [ft]	East [ft]	Latitude	Longitude	DLS [°/100ft]	Comments
2704.00†	13.242	210.906	2662.44	232.43	-329.10	-197.01	40°24'47.688"N	104°49'44.142"W	0.00	
2804.00†	13.242	210.906	2759.78	246.31	-348.76	-208.77	40°24'47.494"N	104°49'44.295"W	0.00	
2904.00†	13.242	210.906	2857.12	260.19	-368.41	-220.54	40°24'47.299"N	104°49'44.447"W	0.00	
3004.00†	13.242	210.906	2954.46	274.07	-388.07	-232.30	40°24'47.105"N	104°49'44.599"W	0.00	
3104.00†	13.242	210.906	3051.80	287.96	-407.72	-244.07	40°24'46.911"N	104°49'44.751"W	0.00	
3204.00†	13.242	210.906	3149.14	301.84	-427.38	-255.84	40°24'46.717"N	104°49'44.903"W	0.00	
3304.00†	13.242	210.906	3246.49	315.72	-447.03	-267.60	40°24'46.523"N	104°49'45.055"W	0.00	
3404.00†	13.242	210.906	3343.83	329.60	-466.69	-279.37	40°24'46.328"N	104°49'45.207"W	0.00	
3504.00†	13.242	210.906	3441.17	343.48	-486.34	-291.13	40°24'46.134"N	104°49'45.359"W	0.00	
3604.00†	13.242	210.906	3538.51	357.36	-506.00	-302.90	40°24'45.940"N	104°49'45.511"W	0.00	
3704.00†	13.242	210.906	3635.85	371.24	-525.65	-314.66	40°24'45.746"N	104°49'45.664"W	0.00	
3804.00†	13.242	210.906	3733.19	385.13	-545.31	-326.43	40°24'45.551"N	104°49'45.816"W	0.00	
3904.00†	13.242	210.906	3830.53	399.01	-564.96	-338.20	40°24'45.357"N	104°49'45.968"W	0.00	
4004.00†	13.242	210.906	3927.87	412.89	-584.62	-349.96	40°24'45.163"N	104°49'46.120"W	0.00	
4104.00†	13.242	210.906	4025.21	426.77	-604.27	-361.73	40°24'44.969"N	104°49'46.272"W	0.00	
4204.00†	13.242	210.906	4122.55	440.65	-623.92	-373.49	40°24'44.775"N	104°49'46.424"W	0.00	
4304.00†	13.242	210.906	4219.89	454.53	-643.58	-385.26	40°24'44.580"N	104°49'46.576"W	0.00	
4404.00†	13.242	210.906	4317.24	468.41	-663.23	-397.02	40°24'44.386"N	104°49'46.728"W	0.00	
4504.00†	13.242	210.906	4414.58	482.29	-682.89	-408.79	40°24'44.192"N	104°49'46.880"W	0.00	
4604.00†	13.242	210.906	4511.92	496.18	-702.54	-420.56	40°24'43.998"N	104°49'47.032"W	0.00	
4704.00†	13.242	210.906	4609.26	510.06	-722.20	-432.32	40°24'43.803"N	104°49'47.185"W	0.00	
4804.00†	13.242	210.906	4706.60	523.94	-741.85	-444.09	40°24'43.609"N	104°49'47.337"W	0.00	
4904.00†	13.242	210.906	4803.94	537.82	-761.51	-455.85	40°24'43.415"N	104°49'47.489"W	0.00	
5004.00†	13.242	210.906	4901.28	551.70	-781.16	-467.62	40°24'43.221"N	104°49'47.641"W	0.00	
5104.00†	13.242	210.906	4998.62	565.58	-800.82	-479.38	40°24'43.027"N	104°49'47.793"W	0.00	
5204.00†	13.242	210.906	5095.96	579.46	-820.47	-491.15	40°24'42.832"N	104°49'47.945"W	0.00	
5304.00†	13.242	210.906	5193.30	593.34	-840.13	-502.92	40°24'42.638"N	104°49'48.097"W	0.00	
5404.00†	13.242	210.906	5290.64	607.23	-859.78	-514.68	40°24'42.444"N	104°49'48.249"W	0.00	
5504.00†	13.242	210.906	5387.99	621.11	-879.44	-526.45	40°24'42.250"N	104°49'48.401"W	0.00	
5604.00†	13.242	210.906	5485.33	634.99	-899.09	-538.21	40°24'42.055"N	104°49'48.553"W	0.00	



Planned Wellpath Report

BOST FARM 33N-11C-L (REV-C.0) PWP

Page 4 of 10



REFERENCE WELLPATH IDENTIFICATION

Operator	SRC ENERGY	Slot	SLOT#06 BOST FARM 33N-11C-L (2666'FSL & 1154'FWL, SEC.07)
Area	COLORADO	Well	BOST FARM 33N-11C-L
Field	WELD COUNTY (NAD83,TRUE NORTH)	Wellbore	BOST FARM 33N-11C-L PWB
Facility	SEC.07-T05N-R66W		

WELLPATH DATA (186 stations) † = interpolated/extrapolated station

MD [ft]	Inclination [°]	Azimuth [°]	TVD [ft]	Vert Sect [ft]	North [ft]	East [ft]	Latitude	Longitude	DLS [°/100ft]	Comments
5704.00†	13.242	210.906	5582.67	648.87	-918.75	-549.98	40°24'41.861"N	104°49'48.706"W	0.00	
5804.00†	13.242	210.906	5680.01	662.75	-938.40	-561.74	40°24'41.667"N	104°49'48.858"W	0.00	
5904.00†	13.242	210.906	5777.35	676.63	-958.06	-573.51	40°24'41.473"N	104°49'49.010"W	0.00	
6004.00†	13.242	210.906	5874.69	690.51	-977.71	-585.28	40°24'41.279"N	104°49'49.162"W	0.00	
6104.00†	13.242	210.906	5972.03	704.39	-997.36	-597.04	40°24'41.084"N	104°49'49.314"W	0.00	
6204.00†	13.242	210.906	6069.37	718.28	-1017.02	-608.81	40°24'40.890"N	104°49'49.466"W	0.00	
6304.00†	13.242	210.906	6166.71	732.16	-1036.67	-620.57	40°24'40.696"N	104°49'49.618"W	0.00	
6404.00†	13.242	210.906	6264.05	746.04	-1056.33	-632.34	40°24'40.502"N	104°49'49.770"W	0.00	
6504.00†	13.242	210.906	6361.40	759.92	-1075.98	-644.10	40°24'40.307"N	104°49'49.922"W	0.00	
6604.00†	13.242	210.906	6458.74	773.80	-1095.64	-655.87	40°24'40.113"N	104°49'50.074"W	0.00	
6640.72	13.242	210.906	6494.48	778.90	-1102.86	-660.19	40°24'40.042"N	104°49'50.130"W	0.00	End of Tangent
6704.00†	16.869	227.994	6555.61	790.76	-1115.23	-670.74	40°24'39.920"N	104°49'50.267"W	9.00	
6804.00†	24.240	242.972	6649.24	821.83	-1134.31	-699.87	40°24'39.731"N	104°49'50.643"W	9.00	
6904.00†	32.409	251.015	6737.23	867.29	-1152.39	-743.59	40°24'39.552"N	104°49'51.208"W	9.00	
7004.00†	40.899	256.049	6817.40	926.02	-1169.03	-800.82	40°24'39.388"N	104°49'51.948"W	9.00	
7104.00†	49.543	259.592	6887.78	996.57	-1183.83	-870.15	40°24'39.242"N	104°49'52.844"W	9.00	
7204.00†	58.271	262.319	6946.64	1077.20	-1196.41	-949.88	40°24'39.117"N	104°49'53.875"W	9.00	
7304.00†	67.046	264.572	6992.53	1165.93	-1206.47	-1038.04	40°24'39.018"N	104°49'55.015"W	9.00	
7404.00†	75.849	266.548	7024.32	1260.58	-1213.76	-1132.46	40°24'38.946"N	104°49'56.235"W	9.00	
7504.00†	84.668	268.376	7041.22	1358.81	-1218.10	-1230.82	40°24'38.903"N	104°49'57.507"W	9.00	
7570.70	90.553	269.560	7044.00†	1425.14	-1219.30	-1297.43	40°24'38.891"N	104°49'58.368"W	9.00	End of 3D Arc
7604.00†	90.552	269.560	7043.68	1458.25	-1219.56	-1330.72	40°24'38.888"N	104°49'58.798"W	0.01	
7704.00†	90.546	269.561	7042.72	1557.71	-1220.32	-1430.71	40°24'38.881"N	104°50'00.091"W	0.01	
7804.00†	90.541	269.561	7041.77	1657.16	-1221.09	-1530.71	40°24'38.873"N	104°50'01.384"W	0.01	
7904.00†	90.535	269.562	7040.83	1756.62	-1221.85	-1630.70	40°24'38.866"N	104°50'02.676"W	0.01	
8004.00†	90.530	269.562	7039.90	1856.08	-1222.62	-1730.69	40°24'38.858"N	104°50'03.969"W	0.01	
8104.00†	90.524	269.563	7038.98	1955.53	-1223.38	-1830.68	40°24'38.850"N	104°50'05.262"W	0.01	
8204.00†	90.519	269.563	7038.07	2054.99	-1224.14	-1930.68	40°24'38.843"N	104°50'06.554"W	0.01	
8304.00†	90.513	269.564	7037.17	2154.44	-1224.91	-2030.67	40°24'38.835"N	104°50'07.847"W	0.01	
8404.00†	90.508	269.564	7036.28	2253.90	-1225.67	-2130.66	40°24'38.828"N	104°50'09.140"W	0.01	



Planned Wellpath Report

BOST FARM 33N-11C-L (REV-C.0) PWP

Page 5 of 10

**BAKER
HUGHES**
a GE company



REFERENCE WELLPATH IDENTIFICATION

Operator	SRC ENERGY	Slot	SLOT#06 BOST FARM 33N-11C-L (2666'FSL & 1154'FWL, SEC.07)
Area	COLORADO	Well	BOST FARM 33N-11C-L
Field	WELD COUNTY (NAD83,TRUE NORTH)	Wellbore	BOST FARM 33N-11C-L PWB
Facility	SEC.07-T05N-R66W		

WELLPATH DATA (186 stations) † = interpolated/extrapolated station

MD [ft]	Inclination [°]	Azimuth [°]	TVD [ft]	Vert Sect [ft]	North [ft]	East [ft]	Latitude	Longitude	DLS [°/100ft]	Comments
8504.00†	90.502	269.565	7035.40	2353.36	-1226.43	-2230.66	40°24'38.820"N	104°50'10.432"W	0.01	
8604.00†	90.497	269.565	7034.53	2452.81	-1227.19	-2330.65	40°24'38.812"N	104°50'11.725"W	0.01	
8704.00†	90.492	269.566	7033.67	2552.27	-1227.94	-2430.64	40°24'38.805"N	104°50'13.018"W	0.01	
8804.00†	90.486	269.566	7032.81	2651.72	-1228.70	-2530.64	40°24'38.797"N	104°50'14.310"W	0.01	
8904.00†	90.481	269.567	7031.97	2751.18	-1229.46	-2630.63	40°24'38.790"N	104°50'15.603"W	0.01	
9004.00†	90.475	269.567	7031.13	2850.64	-1230.21	-2730.62	40°24'38.782"N	104°50'16.896"W	0.01	
9104.00†	90.470	269.568	7030.31	2950.09	-1230.97	-2830.62	40°24'38.774"N	104°50'18.188"W	0.01	
9204.00†	90.464	269.568	7029.49	3049.55	-1231.72	-2930.61	40°24'38.767"N	104°50'19.481"W	0.01	
9304.00†	90.459	269.569	7028.69	3149.00	-1232.48	-3030.60	40°24'38.759"N	104°50'20.774"W	0.01	
9404.00†	90.453	269.569	7027.89	3248.46	-1233.23	-3130.60	40°24'38.752"N	104°50'22.066"W	0.01	
9504.00†	90.448	269.570	7027.11	3347.91	-1233.98	-3230.59	40°24'38.744"N	104°50'23.359"W	0.01	
9604.00†	90.442	269.570	7026.33	3447.37	-1234.73	-3330.59	40°24'38.737"N	104°50'24.652"W	0.01	
9704.00†	90.437	269.571	7025.56	3546.83	-1235.48	-3430.58	40°24'38.729"N	104°50'25.944"W	0.01	
9804.00†	90.432	269.571	7024.80	3646.28	-1236.23	-3530.58	40°24'38.722"N	104°50'27.237"W	0.01	
9904.00†	90.426	269.572	7024.06	3745.74	-1236.98	-3630.57	40°24'38.714"N	104°50'28.530"W	0.01	
10004.00†	90.421	269.572	7023.32	3845.19	-1237.73	-3730.56	40°24'38.706"N	104°50'29.822"W	0.01	
10104.00†	90.415	269.572	7022.59	3944.65	-1238.47	-3830.56	40°24'38.699"N	104°50'31.115"W	0.01	
10204.00†	90.410	269.573	7021.87	4044.11	-1239.22	-3930.55	40°24'38.691"N	104°50'32.408"W	0.01	
10304.00†	90.404	269.573	7021.16	4143.56	-1239.96	-4030.55	40°24'38.684"N	104°50'33.700"W	0.01	
10404.00†	90.399	269.574	7020.46	4243.02	-1240.71	-4130.54	40°24'38.676"N	104°50'34.993"W	0.01	
10504.00†	90.393	269.574	7019.76	4342.47	-1241.45	-4230.54	40°24'38.669"N	104°50'36.286"W	0.01	
10604.00†	90.388	269.575	7019.08	4441.93	-1242.19	-4330.53	40°24'38.661"N	104°50'37.578"W	0.01	
10704.00†	90.383	269.575	7018.41	4541.38	-1242.93	-4430.53	40°24'38.654"N	104°50'38.871"W	0.01	
10804.00†	90.377	269.576	7017.75	4640.84	-1243.67	-4530.52	40°24'38.646"N	104°50'40.164"W	0.01	
10904.00†	90.372	269.576	7017.09	4740.29	-1244.41	-4630.52	40°24'38.639"N	104°50'41.456"W	0.01	
11004.00†	90.366	269.577	7016.45	4839.75	-1245.15	-4730.51	40°24'38.631"N	104°50'42.749"W	0.01	
11104.00†	90.361	269.577	7015.82	4939.21	-1245.89	-4830.51	40°24'38.624"N	104°50'44.042"W	0.01	
11204.00†	90.355	269.578	7015.19	5038.66	-1246.63	-4930.50	40°24'38.616"N	104°50'45.334"W	0.01	
11304.00†	90.350	269.578	7014.58	5138.12	-1247.36	-5030.50	40°24'38.609"N	104°50'46.627"W	0.01	
11404.00†	90.344	269.579	7013.97	5237.57	-1248.10	-5130.49	40°24'38.601"N	104°50'47.920"W	0.01	



Planned Wellpath Report

BOST FARM 33N-11C-L (REV-C.0) PWP

Page 6 of 10



REFERENCE WELLPATH IDENTIFICATION

Operator	SRC ENERGY	Slot	SLOT#06 BOST FARM 33N-11C-L (2666'FSL & 1154'FWL, SEC.07)
Area	COLORADO	Well	BOST FARM 33N-11C-L
Field	WELD COUNTY (NAD83,TRUE NORTH)	Wellbore	BOST FARM 33N-11C-L PWB
Facility	SEC.07-T05N-R66W		

WELLPATH DATA (186 stations) † = interpolated/extrapolated station

MD [ft]	Inclination [°]	Azimuth [°]	TVD [ft]	Vert Sect [ft]	North [ft]	East [ft]	Latitude	Longitude	DLS [°/100ft]	Comments
11504.00†	90.339	269.579	7013.37	5337.03	-1248.84	-5230.49	40°24'38.594"N	104°50'49.212"W	0.01	
11604.00†	90.333	269.580	7012.79	5436.48	-1249.57	-5330.49	40°24'38.587"N	104°50'50.505"W	0.01	
11704.00†	90.328	269.580	7012.21	5535.94	-1250.30	-5430.48	40°24'38.579"N	104°50'51.798"W	0.01	
11804.00†	90.323	269.581	7011.64	5635.39	-1251.03	-5530.48	40°24'38.572"N	104°50'53.090"W	0.01	
11904.00†	90.317	269.581	7011.08	5734.85	-1251.77	-5630.47	40°24'38.564"N	104°50'54.383"W	0.01	
12004.00†	90.312	269.582	7010.54	5834.30	-1252.50	-5730.47	40°24'38.557"N	104°50'55.676"W	0.01	
12104.00†	90.306	269.582	7010.00	5933.76	-1253.23	-5830.46	40°24'38.549"N	104°50'56.968"W	0.01	
12204.00†	90.301	269.583	7009.47	6033.21	-1253.96	-5930.46	40°24'38.542"N	104°50'58.261"W	0.01	
12304.00†	90.295	269.583	7008.95	6132.67	-1254.68	-6030.46	40°24'38.534"N	104°50'59.554"W	0.01	
12404.00†	90.290	269.584	7008.44	6232.12	-1255.41	-6130.45	40°24'38.527"N	104°51'00.847"W	0.01	
12504.00†	90.284	269.584	7007.94	6331.58	-1256.14	-6230.45	40°24'38.520"N	104°51'02.139"W	0.01	
12604.00†	90.279	269.585	7007.44	6431.03	-1256.86	-6330.44	40°24'38.512"N	104°51'03.432"W	0.01	
12704.00†	90.273	269.585	7006.96	6530.49	-1257.59	-6430.44	40°24'38.505"N	104°51'04.725"W	0.01	
12804.00†	90.268	269.585	7006.49	6629.94	-1258.31	-6530.44	40°24'38.497"N	104°51'06.017"W	0.01	
12904.00†	90.263	269.586	7006.03	6729.40	-1259.03	-6630.43	40°24'38.490"N	104°51'07.310"W	0.01	
13004.00†	90.257	269.586	7005.57	6828.85	-1259.76	-6730.43	40°24'38.483"N	104°51'08.603"W	0.01	
13104.00†	90.252	269.587	7005.13	6928.31	-1260.48	-6830.43	40°24'38.475"N	104°51'09.895"W	0.01	
13204.00†	90.246	269.587	7004.69	7027.76	-1261.20	-6930.42	40°24'38.468"N	104°51'11.188"W	0.01	
13304.00†	90.241	269.588	7004.27	7127.22	-1261.92	-7030.42	40°24'38.460"N	104°51'12.481"W	0.01	
13404.00†	90.235	269.588	7003.85	7226.67	-1262.64	-7130.42	40°24'38.453"N	104°51'13.773"W	0.01	
13504.00†	90.230	269.589	7003.45	7326.13	-1263.36	-7230.41	40°24'38.446"N	104°51'15.066"W	0.01	
13604.00†	90.224	269.589	7003.05	7425.58	-1264.07	-7330.41	40°24'38.438"N	104°51'16.359"W	0.01	
13704.00†	90.219	269.590	7002.67	7525.04	-1264.79	-7430.41	40°24'38.431"N	104°51'17.652"W	0.01	
13804.00†	90.213	269.590	7002.29	7624.49	-1265.50	-7530.40	40°24'38.423"N	104°51'18.944"W	0.01	
13904.00†	90.208	269.591	7001.92	7723.95	-1266.22	-7630.40	40°24'38.416"N	104°51'20.237"W	0.01	
14004.00†	90.203	269.591	7001.56	7823.40	-1266.93	-7730.40	40°24'38.409"N	104°51'21.530"W	0.01	
14104.00†	90.197	269.592	7001.21	7922.85	-1267.65	-7830.39	40°24'38.401"N	104°51'22.822"W	0.01	
14204.00†	90.192	269.592	7000.87	8022.31	-1268.36	-7930.39	40°24'38.394"N	104°51'24.115"W	0.01	
14304.00†	90.186	269.593	7000.54	8121.76	-1269.07	-8030.39	40°24'38.387"N	104°51'25.408"W	0.01	
14404.00†	90.181	269.593	7000.22	8221.22	-1269.78	-8130.38	40°24'38.379"N	104°51'26.700"W	0.01	



Planned Wellpath Report

BOST FARM 33N-11C-L (REV-C.0) PWP

Page 7 of 10



REFERENCE WELLPATH IDENTIFICATION

Operator	SRC ENERGY	Slot	SLOT#06 BOST FARM 33N-11C-L (2666'FSL & 1154'FWL, SEC.07)
Area	COLORADO	Well	BOST FARM 33N-11C-L
Field	WELD COUNTY (NAD83,TRUE NORTH)	Wellbore	BOST FARM 33N-11C-L PWB
Facility	SEC.07-T05N-R66W		

WELLPATH DATA (186 stations) † = interpolated/extrapolated station

MD [ft]	Inclination [°]	Azimuth [°]	TVD [ft]	Vert Sect [ft]	North [ft]	East [ft]	Latitude	Longitude	DLS [°/100ft]	Comments
14504.00†	90.175	269.594	6999.91	8320.67	-1270.49	-8230.38	40°24'38.372"N	104°51'27.993"W	0.01	
14604.00†	90.170	269.594	6999.61	8420.12	-1271.20	-8330.38	40°24'38.365"N	104°51'29.286"W	0.01	
14704.00†	90.164	269.595	6999.32	8519.58	-1271.91	-8430.37	40°24'38.357"N	104°51'30.579"W	0.01	
14804.00†	90.159	269.595	6999.04	8619.03	-1272.61	-8530.37	40°24'38.350"N	104°51'31.871"W	0.01	
14904.00†	90.153	269.596	6998.77	8718.49	-1273.32	-8630.37	40°24'38.343"N	104°51'33.164"W	0.01	
15004.00†	90.148	269.596	6998.50	8817.94	-1274.03	-8730.37	40°24'38.335"N	104°51'34.457"W	0.01	
15104.00†	90.143	269.597	6998.25	8917.39	-1274.73	-8830.36	40°24'38.328"N	104°51'35.749"W	0.01	
15204.00†	90.137	269.597	6998.01	9016.85	-1275.43	-8930.36	40°24'38.321"N	104°51'37.042"W	0.01	
15304.00†	90.132	269.597	6997.77	9116.30	-1276.14	-9030.36	40°24'38.313"N	104°51'38.335"W	0.01	
15404.00†	90.126	269.598	6997.55	9215.75	-1276.84	-9130.36	40°24'38.306"N	104°51'39.627"W	0.01	
15504.00†	90.121	269.598	6997.33	9315.21	-1277.54	-9230.35	40°24'38.299"N	104°51'40.920"W	0.01	
15604.00†	90.115	269.599	6997.13	9414.66	-1278.24	-9330.35	40°24'38.292"N	104°51'42.213"W	0.01	
15704.00†	90.110	269.599	6996.93	9514.11	-1278.94	-9430.35	40°24'38.284"N	104°51'43.506"W	0.01	
15804.00†	90.104	269.600	6996.74	9613.57	-1279.64	-9530.34	40°24'38.277"N	104°51'44.798"W	0.01	
15904.00†	90.099	269.600	6996.56	9713.02	-1280.34	-9630.34	40°24'38.270"N	104°51'46.091"W	0.01	
16004.00†	90.093	269.601	6996.40	9812.47	-1281.03	-9730.34	40°24'38.262"N	104°51'47.384"W	0.01	
16104.00†	90.088	269.601	6996.24	9911.93	-1281.73	-9830.34	40°24'38.255"N	104°51'48.676"W	0.01	
16204.00†	90.083	269.602	6996.09	10011.38	-1282.42	-9930.33	40°24'38.248"N	104°51'49.969"W	0.01	
16304.00†	90.077	269.602	6995.95	10110.83	-1283.12	-10030.33	40°24'38.241"N	104°51'51.262"W	0.01	
16404.00†	90.072	269.603	6995.82	10210.29	-1283.81	-10130.33	40°24'38.233"N	104°51'52.554"W	0.01	
16504.00†	90.066	269.603	6995.70	10309.74	-1284.51	-10230.33	40°24'38.226"N	104°51'53.847"W	0.01	
16604.00†	90.061	269.604	6995.59	10409.19	-1285.20	-10330.32	40°24'38.219"N	104°51'55.140"W	0.01	
16704.00†	90.055	269.604	6995.49	10508.64	-1285.89	-10430.32	40°24'38.212"N	104°51'56.433"W	0.01	
16804.00†	90.050	269.605	6995.40	10608.10	-1286.58	-10530.32	40°24'38.204"N	104°51'57.725"W	0.01	
16904.00†	90.044	269.605	6995.31	10707.55	-1287.27	-10630.32	40°24'38.197"N	104°51'59.018"W	0.01	
17004.00†	90.039	269.606	6995.24	10807.00	-1287.96	-10730.31	40°24'38.190"N	104°52'00.311"W	0.01	
17104.00†	90.033	269.606	6995.18	10906.45	-1288.65	-10830.31	40°24'38.183"N	104°52'01.603"W	0.01	
17204.00†	90.028	269.607	6995.13	11005.91	-1289.33	-10930.31	40°24'38.175"N	104°52'02.896"W	0.01	
17304.00†	90.023	269.607	6995.08	11105.36	-1290.02	-11030.31	40°24'38.168"N	104°52'04.189"W	0.01	
17404.00†	90.017	269.608	6995.05	11204.81	-1290.70	-11130.31	40°24'38.161"N	104°52'05.482"W	0.01	



Planned Wellpath Report

BOST FARM 33N-11C-L (REV-C.0) PWP

Page 8 of 10



REFERENCE WELLPATH IDENTIFICATION

Operator	SRC ENERGY	Slot	SLOT#06 BOST FARM 33N-11C-L (2666'FSL & 1154'FWL, SEC.07)
Area	COLORADO	Well	BOST FARM 33N-11C-L
Field	WELD COUNTY (NAD83,TRUE NORTH)	Wellbore	BOST FARM 33N-11C-L PWB
Facility	SEC.07-T05N-R66W		

WELLPATH DATA (186 stations) † = interpolated/extrapolated station

MD [ft]	Inclination [°]	Azimuth [°]	TVD [ft]	Vert Sect [ft]	North [ft]	East [ft]	Latitude	Longitude	DLS [°/100ft]	Comments
17504.00†	90.012	269.608	6995.02	11304.26	-1291.39	-11230.30	40°24'38.154"N	104°52'06.774"W	0.01	
17604.00†	90.006	269.609	6995.01	11403.71	-1292.07	-11330.30	40°24'38.147"N	104°52'08.067"W	0.01	
17704.00†	90.001	269.609	6995.00	11503.16	-1292.75	-11430.30	40°24'38.139"N	104°52'09.360"W	0.01	
17717.21	90.000	269.609	6995.00 ²	11516.30	-1292.84	-11443.51	40°24'38.138"N	104°52'09.530"W	0.01	End of 3D Arc
17804.00†	90.000	269.609	6995.00	11602.62	-1293.44	-11530.30	40°24'38.132"N	104°52'10.652"W	0.00	
17817.19	90.000	269.609	6995.00 ³	11615.73	-1293.53	-11543.48	40°24'38.131"N	104°52'10.823"W	0.00	End of Tangent

HOLE & CASING SECTIONS - Ref Wellbore: BOST FARM 33N-11C-L PWB Ref Wellpath: BOST FARM 33N-11C-L (REV-C.0) PWP

String/Diameter	Start MD [ft]	End MD [ft]	Interval [ft]	Start TVD [ft]	End TVD [ft]	Start N/S [ft]	Start E/W [ft]	End N/S [ft]	End E/W [ft]
13.5in Open Hole	4.00	1750.00	1746.00	4.00	1733.81	0.00	0.00	-141.60	-84.76
9.625in Casing Surface	4.00	1750.00	1746.00	4.00	1733.81	0.00	0.00	-141.60	-84.76
8.5in Open Hole	1750.00	17817.19	16067.19	1733.81	6995.00	-141.60	-84.76	-1293.53	-11543.48



Planned Wellpath Report

BOST FARM 33N-11C-L (REV-C.0) PWP

Page 9 of 10



REFERENCE WELLPATH IDENTIFICATION

Operator	SRC ENERGY	Slot	SLOT#06 BOST FARM 33N-11C-L (2666'FSL & 1154'FWL, SEC.07)
Area	COLORADO	Well	BOST FARM 33N-11C-L
Field	WELD COUNTY (NAD83,TRUE NORTH)	Wellbore	BOST FARM 33N-11C-L PWB
Facility	SEC.07-T05N-R66W		

TARGETS

Name	MD [ft]	TVD [ft]	North [ft]	East [ft]	Grid East [US ft]	Grid North [US ft]	Latitude	Longitude	Shape
SEC.07-T05N-R66W		2.00	-114.76	104.16	3187161.59	1394309.79	40°24'49.806"N	104°49'40.249"W	polygon
SEC.11-T05N-R67W		2.00	-114.76	104.16	3187161.59	1394309.79	40°24'49.806"N	104°49'40.249"W	polygon
SEC.12-T05N-R67W		2.00	-114.76	104.16	3187161.59	1394309.79	40°24'49.806"N	104°49'40.249"W	polygon
BOST FARM 33N-11C-L BHL ON PLAT (1376'FSL & 360'FWL, SEC.11)		6987.00	-1291.12	-11233.53	3175833.60	1393047.62	40°24'38.156"N	104°52'06.816"W	point
BOST FARM 33N-11C-L BPZ ON PLAT (1378'FSL & 460'FWL, SEC.11)		6987.00	-1290.44	-11133.56	3175933.56	1393049.06	40°24'38.164"N	104°52'05.524"W	point
BOST FARM 33N-11C-L BHL REV-1 (1376'FSL & 360'FWL, SEC.11)		6995.00	-1291.16	-11233.53	3175833.60	1393047.58	40°24'38.156"N	104°52'06.816"W	point
3) BOST FARM 33N-11C-L BHL REV-2 (1369'FSL & 50'FWL, SEC.11)	17817.19	6995.00	-1293.53	-11543.48	3175523.69	1393042.87	40°24'38.131"N	104°52'10.823"W	point
BOST FARM 33N-11C-L BPZ REV-1 (1378'FSL & 460'FWL, SEC.11)		6995.00	-1290.40	-11133.59	3175933.53	1393049.10	40°24'38.164"N	104°52'05.524"W	point
2) BOST FARM 33N-11C-L BPZ REV-2 (1371'FSL & 150'FWL, SEC.11)	17717.21	6995.00	-1292.84	-11443.51	3175623.65	1393044.31	40°24'38.138"N	104°52'09.530"W	point
1) BOST FARM 33N-11C-L TOP OF PROD REV-1 (1440'FSL & 150'FEL, SEC.12)	7570.70	7044.00	-1219.30	-1297.43	3185768.47	1393194.71	40°24'38.891"N	104°49'58.368"W	point
BOST FARM 33N-11C-L TOP OF PROD ON PLAT (1440'FSL & 150'FEL, SEC.12)		7199.00	-1219.32	-1297.43	3185768.47	1393194.69	40°24'38.891"N	104°49'58.368"W	point



Planned Wellpath Report

BOST FARM 33N-11C-L (REV-C.0) PWP

Page 10 of 10

**BAKER
HUGHES**
a GE company



REFERENCE WELLPATH IDENTIFICATION			
Operator	SRC ENERGY	Slot	SLOT#06 BOST FARM 33N-11C-L (2666'FSL & 1154'FWL, SEC.07)
Area	COLORADO	Well	BOST FARM 33N-11C-L
Field	WELD COUNTY (NAD83,TRUE NORTH)	Wellbore	BOST FARM 33N-11C-L PWB
Facility	SEC.07-T05N-R66W		

SURVEY PROGRAM - Ref Wellbore: BOST FARM 33N-11C-L PWB Ref Wellpath: BOST FARM 33N-11C-L (REV-C.0) PWP				
Start MD [ft]	End MD [ft]	Positional Uncertainty Model	Log Name/Comment	Wellbore
4.00	1750.00	BHI NaviTrak (Axial)		BOST FARM 33N-11C-L PWB
1750.00	17817.19	BHI AutoTrak Curve (MagCAD+IFR1, Short spacing)		BOST FARM 33N-11C-L PWB