

SRC ENERGY

Location: COLORADO Slot: SLOT#07 BOST FARM 33N-11A-L (2666'FSL & 1174'FWL, SEC.07)
Field: WELD COUNTY (NAD83,TRUE NORTH) Well: BOST FARM 33N-11A-L
Facility: SEC.07-T05N-R66W Wellbore: BOST FARM 33N-11A-L PWB

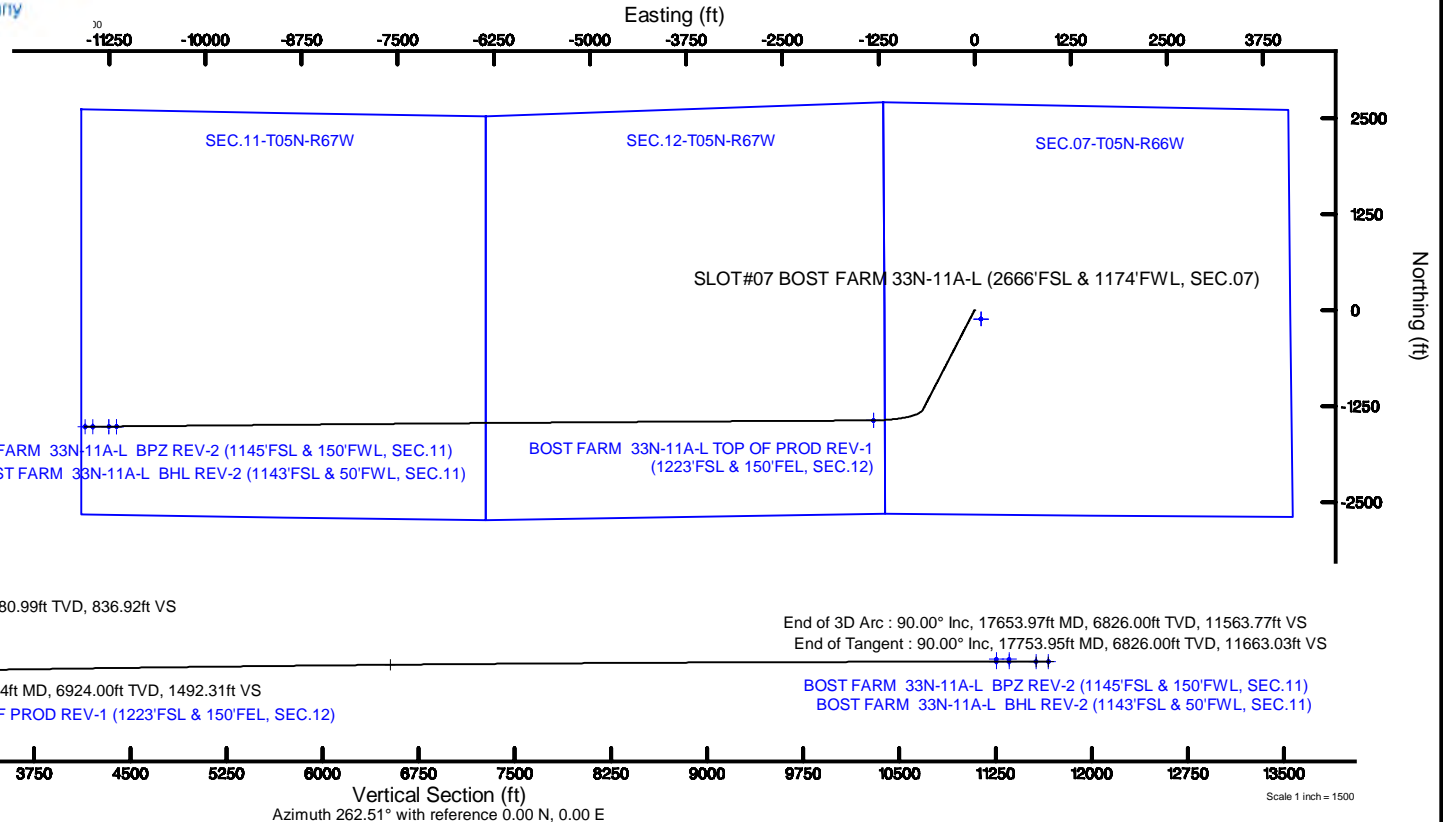
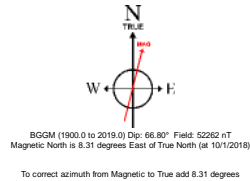
Plot reference wellpath is BOST FARM 33N-11A-L (REV-C.0) PWP	Grid System: NAD83 / Lambert Colorado SP, Northern Zone (501), US feet
True vertical depths are referenced to IKON 12 (4) (RKB)	North Reference: True north
Measured depths are referenced to IKON 12 (4) (RKB)	Scale: True distance
IKON 12 (4) (RKB) to Mean Sea Level: 4878 feet	Depths are in feet
Mean Sea Level to Mud line (At Slot: SLOT#07 BOST FARM 33N-11A-L (2666'FSL & 1174'FWL, SEC.07): 0 feet	Created by: hanisab on 2019-01-03
Coordinates are in feet referenced to Slot	Database: WA DENVER

Location Information

Facility Name			Grid East (US ft)	Grid North (US ft)	Latitude	Longitude
SEC.07-T05N-R66W			3187161.591	1394309.789	40°24'49.806"N	104°49'40.249"W
Slot	Local N (ft)	Local E (ft)	Grid East (US ft)	Grid North (US ft)	Latitude	Longitude
SLOT#07 BOST FARM 33N-11A-L (2666FSL & 1174FWL, SEC.07)	114.39	-84.11	3187076.618	1394423.538	40°24'50.936"N	104°49'41.336"W
IKON 12 (4) (RKB) to Mud line (At Slot: SLOT#07 BOST FARM 33N-11A-L (2666FSL & 1174FWL, SEC.07))					4878ft	
Mean Sea Level to Mud line (At Slot: SLOT#07 BOST FARM 33N-11A-L (2666FSL & 1174FWL, SEC.07))					0ft	
IKON 12 (4) (RKB) to Mean Sea Level					4878ft	

Survey Program

Start MD (ft)	End MD (ft)	Tool	Model	Log Name/Comment	Wellbore
4.00	1750.00	BHI NavTrak	BHI NavTrak (Axial)		BOST FARM 33N-11A-L PWB
1750.00	17753.95	BHI AutoTrak Curve	BHI AutoTrak Curve (MagCAD+FR1, Short spacing)		BOST FARM 33N-11A-L PWB



BOST FARM 33N-11A-L (REV-C.0) LAS.las

~VERSION INFORMATION

VERS. 2.0 : CWLS LOG ASCII STANDARD-VERSION 2.0

WRAP. NO : ASCII DATA SECTION CONTAINS ONE ROW PER WELLPATH STATION

~WELL INFORMATION

#MNEM	.UNITS	DATA	:DESCRIPTION
#----	.-----	----	:-----
STRT	.ft	0.00	:START MD
STOP	.ft	17753.95	:STOP MD
STEP	.ft	0.0	:STEP (non-uniform increment)
NULL	.	-999.99	:NULL
COMP	.	SRC ENERGY	:OPERATOR
WELL	.	BOST FARM 33N-11A-L	:WELL
FLD	.	WELD COUNTY (NAD83,TRUE NORTH)	:FIELD
LOC	.	COLORADO	:AREA (aka: Location)
CNTY	.	N/A	:COUNTY
STAT	.	N/A	:STATE
CTRY	.	N/A	:COUNTRY
SRVC	.	Baker Hughes	:CONTRACTOR
DATE	.	09/25/2018	:LOG REV DATE
API	.		:API NUMBER

~OTHER INFORMATION

#Software: WellArchitect(R) Version 5.1

#MNEM	.UNITS	DATA	:DESCRIPTION
#----	.-----	----	:-----
WPTYPE	.	PLANNED WELLPATH	:WELLPATH TYPE
FACILITY	.	SEC.07-T05N-R66W	:FACILITY
SLOT	.	SLOT#07 BOST FARM 33N-11A-L (2666'FSL & 1174'FWL, SEC.07)	:SLOT
WELLBORE	.	BOST FARM 33N-11A-L PWB	:WELLBORE
WELLPATH	.	BOST FARM 33N-11A-L (REV-C.0) PWP	:WELLPATH
MDREFPT	.	IKON 12 (4') (RKB)	:MD REFERENCE POINT
TVDREFPT	.	IKON 12 (4') (RKB)	:TVD REFERENCE POINT
LCLREFPT	.	Slot	:LOCAL COORDINATE REFERENCE PT

BOST FARM 33N-11A-L (REV-C.0) LAS.las

VSAZIMUTH.deg 262.51 :VERTICAL SECTION AZIMUTH
 VSORIGN .ft 0.00 :VERTICAL SECTION ORIGIN NORTH
 VSORIGE .ft 0.00 :VERTICAL SECTION ORIGIN EAST

~CURVE (WELLPATH) INFORMATION

#MNEM .UNITS :DESCRIPTION
 #---- .----- :-----
 DEPT .ft :MEASURED DEPTH
 INC .deg :INCLINATION
 AZI .deg :AZIMUTH
 TVD .ft :TRUE VERTICAL DEPTH
 SECT .ft :CROSS SECTION (CURTAIN/VERTICAL)
 LOCALN .ft :LOCAL NORTH
 LOCALE .ft :LOCAL EAST
 LAT .deg :LATITUDE
 LONG .deg :LONGITUDE
 DLS .deg/100ft :DOGLEG SEVERITY

~ASCII DATA

0.00	0.00	207.39	0.00	0.00	0.00	0.00	40.4141490	-104.8281490	0.00
4.00	0.00	207.39	4.00	0.00	0.00	0.00	40.4141490	-104.8281490	0.00
104.00	0.00	207.39	104.00	0.00	0.00	0.00	40.4141490	-104.8281490	0.00
204.00	0.00	207.39	204.00	0.00	0.00	0.00	40.4141490	-104.8281490	0.00
304.00	0.00	207.39	304.00	0.00	0.00	0.00	40.4141490	-104.8281490	0.00
404.00	0.00	207.39	404.00	0.00	0.00	0.00	40.4141490	-104.8281490	0.00
504.00	0.00	207.39	504.00	0.00	0.00	0.00	40.4141490	-104.8281490	0.00
600.00	0.00	207.39	600.00	0.00	0.00	0.00	40.4141490	-104.8281490	0.00
604.00	0.08	207.39	604.00	0.00	0.00	0.00	40.4141490	-104.8281490	2.00
704.00	2.08	207.39	703.98	1.08	-1.68	-0.87	40.4141444	-104.8281521	2.00
804.00	4.08	207.39	803.83	4.15	-6.45	-3.34	40.4141313	-104.8281610	2.00
904.00	6.08	207.39	903.43	9.21	-14.31	-7.41	40.4141097	-104.8281756	2.00
1004.00	8.08	207.39	1002.66	16.26	-25.25	-13.08	40.4140797	-104.8281960	2.00
1104.00	10.08	207.39	1101.40	25.28	-39.26	-20.34	40.4140412	-104.8282220	2.00
1204.00	12.08	207.39	1199.54	36.27	-56.33	-29.18	40.4139944	-104.8282538	2.00

BOST FARM 33N-11A-L (REV-C.0) LAS.las

1304.00	14.08	207.39	1296.94	49.21	-76.42	-39.59	40.4139392	-104.8282912	2.00
1358.42	15.17	207.39	1349.59	57.06	-88.62	-45.91	40.4139057	-104.8283139	2.00
1404.00	15.17	207.39	1393.58	63.88	-99.21	-51.40	40.4138767	-104.8283336	0.00
1504.00	15.17	207.39	1490.10	78.84	-122.44	-63.43	40.4138129	-104.8283768	0.00
1604.00	15.17	207.39	1586.62	93.80	-145.68	-75.47	40.4137491	-104.8284200	0.00
1704.00	15.17	207.39	1683.13	108.76	-168.91	-87.50	40.4136854	-104.8284632	0.00
1804.00	15.17	207.39	1779.65	123.72	-192.14	-99.54	40.4136216	-104.8285065	0.00
1904.00	15.17	207.39	1876.16	138.68	-215.38	-111.57	40.4135578	-104.8285497	0.00
2004.00	15.17	207.39	1972.68	153.64	-238.61	-123.61	40.4134940	-104.8285929	0.00
2104.00	15.17	207.39	2069.20	168.60	-261.84	-135.64	40.4134303	-104.8286361	0.00
2204.00	15.17	207.39	2165.71	183.56	-285.08	-147.68	40.4133665	-104.8286793	0.00
2304.00	15.17	207.39	2262.23	198.52	-308.31	-159.72	40.4133027	-104.8287226	0.00
2404.00	15.17	207.39	2358.75	213.48	-331.54	-171.75	40.4132390	-104.8287658	0.00
2504.00	15.17	207.39	2455.26	228.44	-354.78	-183.79	40.4131752	-104.8288090	0.00
2604.00	15.17	207.39	2551.78	243.40	-378.01	-195.82	40.4131114	-104.8288522	0.00
2704.00	15.17	207.39	2648.29	258.36	-401.24	-207.86	40.4130476	-104.8288954	0.00
2804.00	15.17	207.39	2744.81	273.32	-424.47	-219.89	40.4129839	-104.8289387	0.00
2904.00	15.17	207.39	2841.33	288.28	-447.71	-231.93	40.4129201	-104.8289819	0.00
3004.00	15.17	207.39	2937.84	303.24	-470.94	-243.97	40.4128563	-104.8290251	0.00
3104.00	15.17	207.39	3034.36	318.20	-494.17	-256.00	40.4127925	-104.8290683	0.00
3204.00	15.17	207.39	3130.87	333.16	-517.41	-268.04	40.4127288	-104.8291115	0.00
3304.00	15.17	207.39	3227.39	348.12	-540.64	-280.07	40.4126650	-104.8291548	0.00
3404.00	15.17	207.39	3323.91	363.08	-563.87	-292.11	40.4126012	-104.8291980	0.00
3504.00	15.17	207.39	3420.42	378.04	-587.11	-304.14	40.4125375	-104.8292412	0.00
3604.00	15.17	207.39	3516.94	393.00	-610.34	-316.18	40.4124737	-104.8292844	0.00
3704.00	15.17	207.39	3613.45	407.96	-633.57	-328.22	40.4124099	-104.8293276	0.00
3804.00	15.17	207.39	3709.97	422.92	-656.81	-340.25	40.4123461	-104.8293709	0.00
3904.00	15.17	207.39	3806.49	437.88	-680.04	-352.29	40.4122824	-104.8294141	0.00
4004.00	15.17	207.39	3903.00	452.84	-703.27	-364.32	40.4122186	-104.8294573	0.00
4104.00	15.17	207.39	3999.52	467.80	-726.51	-376.36	40.4121548	-104.8295005	0.00
4204.00	15.17	207.39	4096.04	482.76	-749.74	-388.39	40.4120910	-104.8295437	0.00
4304.00	15.17	207.39	4192.55	497.72	-772.97	-400.43	40.4120273	-104.8295870	0.00
4404.00	15.17	207.39	4289.07	512.68	-796.20	-412.47	40.4119635	-104.8296302	0.00
4504.00	15.17	207.39	4385.58	527.64	-819.44	-424.50	40.4118997	-104.8296734	0.00

BOST FARM 33N-11A-L (REV-C.0) LAS.las

4604.00	15.17	207.39	4482.10	542.59	-842.67	-436.54	40.4118359	-104.8297166	0.00
4704.00	15.17	207.39	4578.62	557.55	-865.90	-448.57	40.4117722	-104.8297598	0.00
4804.00	15.17	207.39	4675.13	572.51	-889.14	-460.61	40.4117084	-104.8298030	0.00
4904.00	15.17	207.39	4771.65	587.47	-912.37	-472.64	40.4116446	-104.8298463	0.00
5004.00	15.17	207.39	4868.16	602.43	-935.60	-484.68	40.4115809	-104.8298895	0.00
5104.00	15.17	207.39	4964.68	617.39	-958.84	-496.72	40.4115171	-104.8299327	0.00
5204.00	15.17	207.39	5061.20	632.35	-982.07	-508.75	40.4114533	-104.8299759	0.00
5304.00	15.17	207.39	5157.71	647.31	-1005.30	-520.79	40.4113895	-104.8300191	0.00
5404.00	15.17	207.39	5254.23	662.27	-1028.54	-532.82	40.4113258	-104.8300624	0.00
5504.00	15.17	207.39	5350.75	677.23	-1051.77	-544.86	40.4112620	-104.8301056	0.00
5604.00	15.17	207.39	5447.26	692.19	-1075.00	-556.89	40.4111982	-104.8301488	0.00
5704.00	15.17	207.39	5543.78	707.15	-1098.24	-568.93	40.4111344	-104.8301920	0.00
5804.00	15.17	207.39	5640.29	722.11	-1121.47	-580.96	40.4110707	-104.8302352	0.00
5904.00	15.17	207.39	5736.81	737.07	-1144.70	-593.00	40.4110069	-104.8302784	0.00
6004.00	15.17	207.39	5833.33	752.03	-1167.93	-605.04	40.4109431	-104.8303217	0.00
6104.00	15.17	207.39	5929.84	766.99	-1191.17	-617.07	40.4108794	-104.8303649	0.00
6204.00	15.17	207.39	6026.36	781.95	-1214.40	-629.11	40.4108156	-104.8304081	0.00
6304.00	15.17	207.39	6122.87	796.91	-1237.63	-641.14	40.4107518	-104.8304513	0.00
6404.00	15.17	207.39	6219.39	811.87	-1260.87	-653.18	40.4106880	-104.8304945	0.00
6504.00	15.17	207.39	6315.91	826.83	-1284.10	-665.21	40.4106243	-104.8305378	0.00
6571.44	15.17	207.39	6380.99	836.92	-1299.77	-673.33	40.4105813	-104.8305669	0.00
6604.00	16.70	216.49	6412.31	842.61	-1307.31	-678.08	40.4105605	-104.8305839	9.00
6704.00	23.13	235.31	6506.37	870.11	-1330.09	-702.82	40.4104980	-104.8306728	9.00
6804.00	30.82	245.74	6595.48	912.19	-1351.84	-742.40	40.4104383	-104.8308149	9.00
6904.00	39.03	252.23	6677.44	967.80	-1372.01	-795.85	40.4103829	-104.8310068	9.00
7004.00	47.48	256.73	6750.22	1035.58	-1390.12	-861.83	40.4103332	-104.8312438	9.00
7104.00	56.08	260.14	6812.04	1113.87	-1405.71	-938.74	40.4102904	-104.8315199	9.00
7204.00	64.75	262.93	6861.37	1200.72	-1418.41	-1024.67	40.4102556	-104.8318285	9.00
7304.00	73.46	265.33	6897.01	1294.01	-1427.90	-1117.51	40.4102295	-104.8321619	9.00
7404.00	82.20	267.53	6918.07	1391.43	-1433.94	-1214.98	40.4102129	-104.8325119	9.00
7504.00	90.95	269.64	6924.03	1490.59	-1436.40	-1314.67	40.4102061	-104.8328699	9.00
7505.74	91.11	269.67	6924.00	1492.31	-1436.41	-1316.41	40.4102061	-104.8328761	9.00
7604.00	91.10	269.67	6922.11	1589.79	-1436.97	-1414.65	40.4102046	-104.8332289	0.01
7704.00	91.09	269.67	6920.21	1688.99	-1437.55	-1514.63	40.4102030	-104.8335879	0.01

BOST FARM 33N-11A-L (REV-C.0) LAS.las

7804.00	91.07	269.67	6918.32	1788.20	-1438.13	-1614.61	40.4102014	-104.8339469	0.01
7904.00	91.06	269.66	6916.46	1887.40	-1438.71	-1714.59	40.4101997	-104.8343059	0.01
8004.00	91.05	269.66	6914.61	1986.61	-1439.30	-1814.57	40.4101981	-104.8346650	0.01
8104.00	91.04	269.66	6912.79	2085.81	-1439.89	-1914.55	40.4101964	-104.8350240	0.01
8204.00	91.03	269.66	6910.98	2185.02	-1440.49	-2014.53	40.4101948	-104.8353830	0.01
8304.00	91.02	269.65	6909.19	2284.23	-1441.10	-2114.51	40.4101931	-104.8357421	0.01
8404.00	91.01	269.65	6907.42	2383.44	-1441.70	-2214.50	40.4101914	-104.8361011	0.01
8504.00	91.00	269.65	6905.67	2482.65	-1442.32	-2314.48	40.4101897	-104.8364601	0.01
8604.00	90.99	269.65	6903.94	2581.86	-1442.93	-2414.46	40.4101880	-104.8368191	0.01
8704.00	90.98	269.64	6902.22	2681.08	-1443.56	-2514.45	40.4101862	-104.8371782	0.01
8804.00	90.97	269.64	6900.53	2780.29	-1444.18	-2614.43	40.4101845	-104.8375372	0.01
8904.00	90.95	269.64	6898.86	2879.50	-1444.82	-2714.41	40.4101827	-104.8378962	0.01
9004.00	90.94	269.63	6897.20	2978.72	-1445.45	-2814.40	40.4101809	-104.8382553	0.01
9104.00	90.93	269.63	6895.56	3077.93	-1446.09	-2914.38	40.4101792	-104.8386143	0.01
9204.00	90.92	269.63	6893.95	3177.15	-1446.74	-3014.37	40.4101773	-104.8389734	0.01
9304.00	90.91	269.63	6892.35	3276.37	-1447.39	-3114.35	40.4101755	-104.8393324	0.01
9404.00	90.90	269.62	6890.77	3375.59	-1448.05	-3214.34	40.4101737	-104.8396914	0.01
9504.00	90.89	269.62	6889.21	3474.81	-1448.71	-3314.32	40.4101718	-104.8400505	0.01
9604.00	90.88	269.62	6887.67	3574.03	-1449.37	-3414.31	40.4101700	-104.8404095	0.01
9704.00	90.87	269.62	6886.14	3673.25	-1450.04	-3514.29	40.4101681	-104.8407686	0.01
9804.00	90.86	269.61	6884.64	3772.47	-1450.71	-3614.28	40.4101662	-104.8411276	0.01
9904.00	90.85	269.61	6883.15	3871.69	-1451.39	-3714.27	40.4101643	-104.8414866	0.01
10004.00	90.83	269.61	6881.69	3970.92	-1452.08	-3814.25	40.4101624	-104.8418457	0.01
10104.00	90.82	269.60	6880.24	4070.14	-1452.76	-3914.24	40.4101605	-104.8422047	0.01
10204.00	90.81	269.60	6878.82	4169.37	-1453.46	-4014.23	40.4101585	-104.8425638	0.01
10304.00	90.80	269.60	6877.41	4268.59	-1454.16	-4114.22	40.4101566	-104.8429228	0.01
10404.00	90.79	269.60	6876.02	4367.82	-1454.86	-4214.21	40.4101546	-104.8432819	0.01
10504.00	90.78	269.59	6874.65	4467.05	-1455.56	-4314.19	40.4101526	-104.8436409	0.01
10604.00	90.77	269.59	6873.30	4566.28	-1456.28	-4414.18	40.4101506	-104.8440000	0.01
10704.00	90.76	269.59	6871.96	4665.51	-1456.99	-4514.17	40.4101486	-104.8443590	0.01
10804.00	90.75	269.58	6870.65	4764.74	-1457.71	-4614.16	40.4101465	-104.8447181	0.01
10904.00	90.74	269.58	6869.36	4863.97	-1458.44	-4714.15	40.4101445	-104.8450771	0.01
11004.00	90.73	269.58	6868.08	4963.20	-1459.17	-4814.14	40.4101424	-104.8454362	0.01
11104.00	90.71	269.58	6866.83	5062.44	-1459.91	-4914.13	40.4101404	-104.8457952	0.01

BOST FARM 33N-11A-L (REV-C.0) LAS.las

11204.00	90.70	269.58	6865.59	5161.67	-1460.65	-5014.12	40.4101383	-104.8461543	0.01
11304.00	90.69	269.57	6864.37	5260.91	-1461.39	-5114.11	40.4101362	-104.8465133	0.01
11404.00	90.68	269.57	6863.17	5360.14	-1462.14	-5214.10	40.4101341	-104.8468724	0.01
11504.00	90.67	269.57	6861.99	5459.38	-1462.90	-5314.09	40.4101319	-104.8472315	0.01
11604.00	90.66	269.56	6860.83	5558.61	-1463.66	-5414.08	40.4101298	-104.8475905	0.01
11704.00	90.65	269.56	6859.69	5657.85	-1464.42	-5514.07	40.4101276	-104.8479496	0.01
11804.00	90.64	269.56	6858.57	5757.09	-1465.19	-5614.06	40.4101255	-104.8483086	0.01
11904.00	90.63	269.56	6857.46	5856.33	-1465.96	-5714.05	40.4101233	-104.8486677	0.01
12004.00	90.62	269.55	6856.38	5955.57	-1466.74	-5814.04	40.4101211	-104.8490267	0.01
12104.00	90.61	269.55	6855.31	6054.81	-1467.52	-5914.03	40.4101189	-104.8493858	0.01
12204.00	90.59	269.55	6854.26	6154.05	-1468.31	-6014.02	40.4101166	-104.8497449	0.01
12304.00	90.58	269.55	6853.24	6253.30	-1469.10	-6114.01	40.4101144	-104.8501039	0.01
12404.00	90.57	269.54	6852.23	6352.54	-1469.90	-6214.01	40.4101121	-104.8504630	0.01
12504.00	90.56	269.54	6851.24	6451.78	-1470.70	-6314.00	40.4101099	-104.8508221	0.01
12604.00	90.55	269.54	6850.27	6551.03	-1471.50	-6413.99	40.4101076	-104.8511811	0.01
12704.00	90.54	269.53	6849.32	6650.27	-1472.32	-6513.98	40.4101053	-104.8515402	0.01
12804.00	90.53	269.53	6848.38	6749.52	-1473.13	-6613.97	40.4101030	-104.8518992	0.01
12904.00	90.52	269.53	6847.47	6848.77	-1473.95	-6713.97	40.4101007	-104.8522583	0.01
13004.00	90.51	269.53	6846.58	6948.02	-1474.78	-6813.96	40.4100983	-104.8526174	0.01
13104.00	90.50	269.52	6845.70	7047.26	-1475.61	-6913.95	40.4100960	-104.8529764	0.01
13204.00	90.49	269.52	6844.84	7146.51	-1476.44	-7013.94	40.4100936	-104.8533355	0.01
13304.00	90.47	269.52	6844.01	7245.76	-1477.28	-7113.94	40.4100912	-104.8536946	0.01
13404.00	90.46	269.52	6843.19	7345.02	-1478.12	-7213.93	40.4100888	-104.8540536	0.01
13504.00	90.45	269.51	6842.39	7444.27	-1478.97	-7313.92	40.4100864	-104.8544127	0.01
13604.00	90.44	269.51	6841.61	7543.52	-1479.83	-7413.92	40.4100840	-104.8547718	0.01
13704.00	90.43	269.51	6840.85	7642.77	-1480.68	-7513.91	40.4100815	-104.8551308	0.01
13804.00	90.42	269.50	6840.10	7742.03	-1481.55	-7613.90	40.4100791	-104.8554899	0.01
13904.00	90.41	269.50	6839.38	7841.28	-1482.41	-7713.90	40.4100766	-104.8558490	0.01
14004.00	90.40	269.50	6838.68	7940.54	-1483.29	-7813.89	40.4100741	-104.8562080	0.01
14104.00	90.39	269.50	6837.99	8039.79	-1484.16	-7913.89	40.4100716	-104.8565671	0.01
14204.00	90.38	269.49	6837.33	8139.05	-1485.04	-8013.88	40.4100691	-104.8569262	0.01
14304.00	90.37	269.49	6836.68	8238.31	-1485.93	-8113.87	40.4100666	-104.8572852	0.01
14404.00	90.35	269.49	6836.05	8337.56	-1486.82	-8213.87	40.4100641	-104.8576443	0.01
14504.00	90.34	269.49	6835.44	8436.82	-1487.72	-8313.86	40.4100615	-104.8580034	0.01

BOST FARM 33N-11A-L (REV-C.0) LAS.las

14604.00	90.33	269.48	6834.85	8536.08	-1488.62	-8413.86	40.4100590	-104.8583624	0.01
14704.00	90.32	269.48	6834.28	8635.34	-1489.52	-8513.85	40.4100564	-104.8587215	0.01
14804.00	90.31	269.48	6833.73	8734.60	-1490.43	-8613.84	40.4100538	-104.8590806	0.01
14904.00	90.30	269.48	6833.20	8833.86	-1491.35	-8713.84	40.4100512	-104.8594397	0.01
15004.00	90.29	269.47	6832.68	8933.13	-1492.27	-8813.83	40.4100486	-104.8597987	0.01
15104.00	90.28	269.47	6832.19	9032.39	-1493.19	-8913.83	40.4100459	-104.8601578	0.01
15204.00	90.27	269.47	6831.71	9131.65	-1494.12	-9013.82	40.4100433	-104.8605169	0.01
15304.00	90.26	269.46	6831.26	9230.92	-1495.05	-9113.82	40.4100406	-104.8608759	0.01
15404.00	90.25	269.46	6830.82	9330.18	-1495.99	-9213.81	40.4100379	-104.8612350	0.01
15504.00	90.23	269.46	6830.40	9429.45	-1496.93	-9313.81	40.4100353	-104.8615941	0.01
15604.00	90.22	269.46	6830.00	9528.71	-1497.88	-9413.80	40.4100325	-104.8619532	0.01
15704.00	90.21	269.45	6829.62	9627.98	-1498.83	-9513.80	40.4100298	-104.8623122	0.01
15804.00	90.20	269.45	6829.26	9727.25	-1499.79	-9613.79	40.4100271	-104.8626713	0.01
15904.00	90.19	269.45	6828.91	9826.51	-1500.75	-9713.79	40.4100243	-104.8630304	0.01
16004.00	90.18	269.45	6828.59	9925.78	-1501.72	-9813.78	40.4100216	-104.8633894	0.01
16104.00	90.17	269.44	6828.29	10025.05	-1502.69	-9913.77	40.4100188	-104.8637485	0.01
16204.00	90.16	269.44	6828.00	10124.32	-1503.67	-10013.77	40.4100160	-104.8641076	0.01
16304.00	90.15	269.44	6827.73	10223.59	-1504.65	-10113.76	40.4100132	-104.8644667	0.01
16404.00	90.14	269.43	6827.49	10322.86	-1505.63	-10213.76	40.4100104	-104.8648257	0.01
16504.00	90.13	269.43	6827.26	10422.13	-1506.62	-10313.75	40.4100076	-104.8651848	0.01
16604.00	90.11	269.43	6827.05	10521.41	-1507.62	-10413.75	40.4100047	-104.8655439	0.01
16704.00	90.10	269.43	6826.86	10620.68	-1508.62	-10513.74	40.4100019	-104.8659029	0.01
16804.00	90.09	269.42	6826.69	10719.95	-1509.62	-10613.74	40.4099990	-104.8662620	0.01
16904.00	90.08	269.42	6826.54	10819.23	-1510.63	-10713.73	40.4099961	-104.8666211	0.01
17004.00	90.07	269.42	6826.40	10918.50	-1511.64	-10813.73	40.4099932	-104.8669802	0.01
17104.00	90.06	269.42	6826.29	11017.78	-1512.66	-10913.72	40.4099903	-104.8673392	0.01
17204.00	90.05	269.41	6826.19	11117.05	-1513.68	-11013.72	40.4099874	-104.8676983	0.01
17304.00	90.04	269.41	6826.12	11216.33	-1514.71	-11113.71	40.4099844	-104.8680574	0.01
17404.00	90.03	269.41	6826.06	11315.61	-1515.74	-11213.71	40.4099815	-104.8684164	0.01
17504.00	90.02	269.40	6826.02	11414.88	-1516.78	-11313.70	40.4099785	-104.8687755	0.01
17604.00	90.01	269.40	6826.00	11514.16	-1517.82	-11413.70	40.4099755	-104.8691346	0.01
17653.97	90.00	269.40	6826.00	11563.77	-1518.35	-11463.66	40.4099740	-104.8693140	0.01
17704.00	90.00	269.40	6826.00	11613.44	-1518.87	-11513.69	40.4099725	-104.8694936	0.00
17753.95	90.00	269.40	6826.00	11663.03	-1519.39	-11563.64	40.4099710	-104.8696730	0.00



Planned Wellpath Report

BOST FARM 33N-11A-L (REV-C.0) PWP

Page 1 of 10



REFERENCE WELLPATH IDENTIFICATION

Operator	SRC ENERGY	Slot	SLOT#07 BOST FARM 33N-11A-L (2666'FSL & 1174'FWL, SEC.07)
Area	COLORADO	Well	BOST FARM 33N-11A-L
Field	WELD COUNTY (NAD83,TRUE NORTH)	Wellbore	BOST FARM 33N-11A-L PWB
Facility	SEC.07-T05N-R66W		

REPORT SETUP INFORMATION

Projection System	NAD83 / Lambert Colorado SP, Northern Zone (501), US feet	Software System	WellArchitect® 5.1
North Reference	True	User	Bushjamh
Scale	0.999961	Report Generated	01/03/2019 at 14:07
Convergence at slot	0.43° East	Database/Source file	WA_DEN_Denver_Defn/BOST FARM 33N-11A-L (REV-C.0) PWP PR.xml

WELLPATH LOCATION

	Local coordinates		Grid coordinates		Geographic coordinates	
	North[ft]	East[ft]	Easting[US ft]	Northing[US ft]	Latitude	Longitude
Slot Location	114.39	-84.11	3187076.62	1394423.54	40°24'50.936"N	104°49'41.336"W
Facility Reference Pt			3187161.59	1394309.79	40°24'49.806"N	104°49'40.249"W
Field Reference Pt			3171284.48	1426358.81	40°30'07.643"N	104°53'02.634"W

WELLPATH DATUM

Calculation method	Minimum curvature	IKON 12 (4') (RKB) to Facility Vertical Datum	4878.00ft
Horizontal Reference Pt	Slot	IKON 12 (4') (RKB) to Mean Sea Level	4878.00ft
Vertical Reference Pt	IKON 12 (4') (RKB)	IKON 12 (4') (RKB) to Mud Line at Slot (SLOT#07 BOST FARM 33N-11A-L (2666'FSL & 1174'FWL, SEC.07))	4878.00ft
MD Reference Pt	IKON 12 (4') (RKB)	Section Origin	N 0.00, E 0.00 ft
Field Vertical Reference	Mean Sea Level	Section Azimuth	262.51°



Planned Wellpath Report

BOST FARM 33N-11A-L (REV-C.0) PWP

Page 2 of 10



REFERENCE WELLPATH IDENTIFICATION

Operator	SRC ENERGY	Slot	SLOT#07 BOST FARM 33N-11A-L (2666'FSL & 1174'FWL, SEC.07)
Area	COLORADO	Well	BOST FARM 33N-11A-L
Field	WELD COUNTY (NAD83,TRUE NORTH)	Wellbore	BOST FARM 33N-11A-L PWB
Facility	SEC.07-T05N-R66W		

WELLPATH DATA (185 stations) † = interpolated/extrapolated station

MD [ft]	Inclination [°]	Azimuth [°]	TVD [ft]	Vert Sect [ft]	North [ft]	East [ft]	Latitude	Longitude	DLS [°/100ft]	Comments
0.00†	0.000	207.386	0.00	0.00	0.00	0.00	40°24'50.936"N	104°49'41.336"W	0.00	
4.00	0.000	207.386	4.00	0.00	0.00	0.00	40°24'50.936"N	104°49'41.336"W	0.00	Tie On
104.00†	0.000	207.386	104.00	0.00	0.00	0.00	40°24'50.936"N	104°49'41.336"W	0.00	
204.00†	0.000	207.386	204.00	0.00	0.00	0.00	40°24'50.936"N	104°49'41.336"W	0.00	
304.00†	0.000	207.386	304.00	0.00	0.00	0.00	40°24'50.936"N	104°49'41.336"W	0.00	
404.00†	0.000	207.386	404.00	0.00	0.00	0.00	40°24'50.936"N	104°49'41.336"W	0.00	
504.00†	0.000	207.386	504.00	0.00	0.00	0.00	40°24'50.936"N	104°49'41.336"W	0.00	
600.00	0.000	207.386	600.00	0.00	0.00	0.00	40°24'50.936"N	104°49'41.336"W	0.00	End of Tangent
604.00†	0.080	207.386	604.00	0.00	0.00	0.00	40°24'50.936"N	104°49'41.336"W	2.00	
704.00†	2.080	207.386	703.98	1.08	-1.68	-0.87	40°24'50.920"N	104°49'41.348"W	2.00	
804.00†	4.080	207.386	803.83	4.15	-6.45	-3.34	40°24'50.873"N	104°49'41.380"W	2.00	
904.00†	6.080	207.386	903.43	9.21	-14.31	-7.41	40°24'50.795"N	104°49'41.432"W	2.00	
1004.00†	8.080	207.386	1002.66	16.26	-25.25	-13.08	40°24'50.687"N	104°49'41.506"W	2.00	
1104.00†	10.080	207.386	1101.40	25.28	-39.26	-20.34	40°24'50.548"N	104°49'41.599"W	2.00	
1204.00†	12.080	207.386	1199.54	36.27	-56.33	-29.18	40°24'50.380"N	104°49'41.714"W	2.00	
1304.00†	14.080	207.386	1296.94	49.21	-76.42	-39.59	40°24'50.181"N	104°49'41.848"W	2.00	
1358.42	15.168	207.386	1349.59	57.06	-88.62	-45.91	40°24'50.061"N	104°49'41.930"W	2.00	End of Build
1404.00†	15.168	207.386	1393.58	63.88	-99.21	-51.40	40°24'49.956"N	104°49'42.001"W	0.00	
1504.00†	15.168	207.386	1490.10	78.84	-122.44	-63.43	40°24'49.726"N	104°49'42.156"W	0.00	
1604.00†	15.168	207.386	1586.62	93.80	-145.68	-75.47	40°24'49.497"N	104°49'42.312"W	0.00	
1704.00†	15.168	207.386	1683.13	108.76	-168.91	-87.50	40°24'49.267"N	104°49'42.468"W	0.00	
1804.00†	15.168	207.386	1779.65	123.72	-192.14	-99.54	40°24'49.038"N	104°49'42.623"W	0.00	
1904.00†	15.168	207.386	1876.16	138.68	-215.38	-111.57	40°24'48.808"N	104°49'42.779"W	0.00	
2004.00†	15.168	207.386	1972.68	153.64	-238.61	-123.61	40°24'48.579"N	104°49'42.934"W	0.00	
2104.00†	15.168	207.386	2069.20	168.60	-261.84	-135.64	40°24'48.349"N	104°49'43.090"W	0.00	
2204.00†	15.168	207.386	2165.71	183.56	-285.08	-147.68	40°24'48.119"N	104°49'43.246"W	0.00	
2304.00†	15.168	207.386	2262.23	198.52	-308.31	-159.72	40°24'47.890"N	104°49'43.401"W	0.00	
2404.00†	15.168	207.386	2358.75	213.48	-331.54	-171.75	40°24'47.660"N	104°49'43.557"W	0.00	
2504.00†	15.168	207.386	2455.26	228.44	-354.78	-183.79	40°24'47.431"N	104°49'43.712"W	0.00	
2604.00†	15.168	207.386	2551.78	243.40	-378.01	-195.82	40°24'47.201"N	104°49'43.868"W	0.00	



Planned Wellpath Report

BOST FARM 33N-11A-L (REV-C.0) PWP

Page 3 of 10



REFERENCE WELLPATH IDENTIFICATION

Operator	SRC ENERGY	Slot	SLOT#07 BOST FARM 33N-11A-L (2666'FSL & 1174'FWL, SEC.07)
Area	COLORADO	Well	BOST FARM 33N-11A-L
Field	WELD COUNTY (NAD83,TRUE NORTH)	Wellbore	BOST FARM 33N-11A-L PWB
Facility	SEC.07-T05N-R66W		

WELLPATH DATA (185 stations) † = interpolated/extrapolated station

MD [ft]	Inclination [°]	Azimuth [°]	TVD [ft]	Vert Sect [ft]	North [ft]	East [ft]	Latitude	Longitude	DLS [°/100ft]	Comments
2704.00†	15.168	207.386	2648.29	258.36	-401.24	-207.86	40°24'46.971"N	104°49'44.024"W	0.00	
2804.00†	15.168	207.386	2744.81	273.32	-424.47	-219.89	40°24'46.742"N	104°49'44.179"W	0.00	
2904.00†	15.168	207.386	2841.33	288.28	-447.71	-231.93	40°24'46.512"N	104°49'44.335"W	0.00	
3004.00†	15.168	207.386	2937.84	303.24	-470.94	-243.97	40°24'46.283"N	104°49'44.490"W	0.00	
3104.00†	15.168	207.386	3034.36	318.20	-494.17	-256.00	40°24'46.053"N	104°49'44.646"W	0.00	
3204.00†	15.168	207.386	3130.87	333.16	-517.41	-268.04	40°24'45.824"N	104°49'44.802"W	0.00	
3304.00†	15.168	207.386	3227.39	348.12	-540.64	-280.07	40°24'45.594"N	104°49'44.957"W	0.00	
3404.00†	15.168	207.386	3323.91	363.08	-563.87	-292.11	40°24'45.364"N	104°49'45.113"W	0.00	
3504.00†	15.168	207.386	3420.42	378.04	-587.11	-304.14	40°24'45.135"N	104°49'45.268"W	0.00	
3604.00†	15.168	207.386	3516.94	393.00	-610.34	-316.18	40°24'44.905"N	104°49'45.424"W	0.00	
3704.00†	15.168	207.386	3613.45	407.96	-633.57	-328.22	40°24'44.676"N	104°49'45.579"W	0.00	
3804.00†	15.168	207.386	3709.97	422.92	-656.81	-340.25	40°24'44.446"N	104°49'45.735"W	0.00	
3904.00†	15.168	207.386	3806.49	437.88	-680.04	-352.29	40°24'44.216"N	104°49'45.891"W	0.00	
4004.00†	15.168	207.386	3903.00	452.84	-703.27	-364.32	40°24'43.987"N	104°49'46.046"W	0.00	
4104.00†	15.168	207.386	3999.52	467.80	-726.51	-376.36	40°24'43.757"N	104°49'46.202"W	0.00	
4204.00†	15.168	207.386	4096.04	482.76	-749.74	-388.39	40°24'43.528"N	104°49'46.357"W	0.00	
4304.00†	15.168	207.386	4192.55	497.72	-772.97	-400.43	40°24'43.298"N	104°49'46.513"W	0.00	
4404.00†	15.168	207.386	4289.07	512.68	-796.20	-412.47	40°24'43.069"N	104°49'46.669"W	0.00	
4504.00†	15.168	207.386	4385.58	527.64	-819.44	-424.50	40°24'42.839"N	104°49'46.824"W	0.00	
4604.00†	15.168	207.386	4482.10	542.59	-842.67	-436.54	40°24'42.609"N	104°49'46.980"W	0.00	
4704.00†	15.168	207.386	4578.62	557.55	-865.90	-448.57	40°24'42.380"N	104°49'47.135"W	0.00	
4804.00†	15.168	207.386	4675.13	572.51	-889.14	-460.61	40°24'42.150"N	104°49'47.291"W	0.00	
4904.00†	15.168	207.386	4771.65	587.47	-912.37	-472.64	40°24'41.921"N	104°49'47.447"W	0.00	
5004.00†	15.168	207.386	4868.16	602.43	-935.60	-484.68	40°24'41.691"N	104°49'47.602"W	0.00	
5104.00†	15.168	207.386	4964.68	617.39	-958.84	-496.72	40°24'41.461"N	104°49'47.758"W	0.00	
5204.00†	15.168	207.386	5061.20	632.35	-982.07	-508.75	40°24'41.232"N	104°49'47.913"W	0.00	
5304.00†	15.168	207.386	5157.71	647.31	-1005.30	-520.79	40°24'41.002"N	104°49'48.069"W	0.00	
5404.00†	15.168	207.386	5254.23	662.27	-1028.54	-532.82	40°24'40.773"N	104°49'48.224"W	0.00	
5504.00†	15.168	207.386	5350.75	677.23	-1051.77	-544.86	40°24'40.543"N	104°49'48.380"W	0.00	
5604.00†	15.168	207.386	5447.26	692.19	-1075.00	-556.89	40°24'40.314"N	104°49'48.536"W	0.00	



Planned Wellpath Report

BOST FARM 33N-11A-L (REV-C.0) PWP

Page 4 of 10



REFERENCE WELLPATH IDENTIFICATION

Operator	SRC ENERGY	Slot	SLOT#07 BOST FARM 33N-11A-L (2666'FSL & 1174'FWL, SEC.07)
Area	COLORADO	Well	BOST FARM 33N-11A-L
Field	WELD COUNTY (NAD83,TRUE NORTH)	Wellbore	BOST FARM 33N-11A-L PWB
Facility	SEC.07-T05N-R66W		

WELLPATH DATA (185 stations) † = interpolated/extrapolated station

MD [ft]	Inclination [°]	Azimuth [°]	TVD [ft]	Vert Sect [ft]	North [ft]	East [ft]	Latitude	Longitude	DLS [°/100ft]	Comments
5704.00†	15.168	207.386	5543.78	707.15	-1098.24	-568.93	40°24'40.084"N	104°49'48.691"W	0.00	
5804.00†	15.168	207.386	5640.29	722.11	-1121.47	-580.96	40°24'39.854"N	104°49'48.847"W	0.00	
5904.00†	15.168	207.386	5736.81	737.07	-1144.70	-593.00	40°24'39.625"N	104°49'49.002"W	0.00	
6004.00†	15.168	207.386	5833.33	752.03	-1167.93	-605.04	40°24'39.395"N	104°49'49.158"W	0.00	
6104.00†	15.168	207.386	5929.84	766.99	-1191.17	-617.07	40°24'39.166"N	104°49'49.314"W	0.00	
6204.00†	15.168	207.386	6026.36	781.95	-1214.40	-629.11	40°24'38.936"N	104°49'49.469"W	0.00	
6304.00†	15.168	207.386	6122.87	796.91	-1237.63	-641.14	40°24'38.706"N	104°49'49.625"W	0.00	
6404.00†	15.168	207.386	6219.39	811.87	-1260.87	-653.18	40°24'38.477"N	104°49'49.780"W	0.00	
6504.00†	15.168	207.386	6315.91	826.83	-1284.10	-665.21	40°24'38.247"N	104°49'49.936"W	0.00	
6571.44	15.168	207.386	6380.99	836.92	-1299.77	-673.33	40°24'38.093"N	104°49'50.041"W	0.00	End of Tangent
6604.00†	16.705	216.493	6412.31	842.61	-1307.31	-678.08	40°24'38.018"N	104°49'50.102"W	9.00	
6704.00†	23.127	235.314	6506.37	870.11	-1330.09	-702.82	40°24'37.793"N	104°49'50.422"W	9.00	
6804.00†	30.815	245.744	6595.48	912.19	-1351.84	-742.40	40°24'37.578"N	104°49'50.934"W	9.00	
6904.00†	39.025	252.228	6677.44	967.80	-1372.01	-795.85	40°24'37.379"N	104°49'51.625"W	9.00	
7004.00†	47.484	256.729	6750.22	1035.58	-1390.12	-861.83	40°24'37.200"N	104°49'52.478"W	9.00	
7104.00†	56.077	260.143	6812.04	1113.87	-1405.71	-938.74	40°24'37.046"N	104°49'53.472"W	9.00	
7204.00†	64.747	262.925	6861.37	1200.72	-1418.41	-1024.67	40°24'36.920"N	104°49'54.583"W	9.00	
7304.00†	73.463	265.333	6897.01	1294.01	-1427.90	-1117.51	40°24'36.826"N	104°49'55.783"W	9.00	
7404.00†	82.203	267.531	6918.07	1391.43	-1433.94	-1214.98	40°24'36.766"N	104°49'57.043"W	9.00	
7504.00†	90.954	269.638	6924.03	1490.59	-1436.40	-1314.67	40°24'36.742"N	104°49'58.332"W	9.00	
7505.74	91.107	269.674	6924.00†	1492.31	-1436.41	-1316.41	40°24'36.742"N	104°49'58.354"W	9.00	End of 3D Arc
7604.00†	91.096	269.672	6922.11	1589.79	-1436.97	-1414.65	40°24'36.736"N	104°49'59.624"W	0.01	
7704.00†	91.085	269.669	6920.21	1688.99	-1437.55	-1514.63	40°24'36.731"N	104°50'00.916"W	0.01	
7804.00†	91.074	269.666	6918.32	1788.20	-1438.13	-1614.61	40°24'36.725"N	104°50'02.209"W	0.01	
7904.00†	91.063	269.664	6916.46	1887.40	-1438.71	-1714.59	40°24'36.719"N	104°50'03.501"W	0.01	
8004.00†	91.052	269.661	6914.61	1986.61	-1439.30	-1814.57	40°24'36.713"N	104°50'04.794"W	0.01	
8104.00†	91.041	269.658	6912.79	2085.81	-1439.89	-1914.55	40°24'36.707"N	104°50'06.086"W	0.01	
8204.00†	91.030	269.656	6910.98	2185.02	-1440.49	-2014.53	40°24'36.701"N	104°50'07.379"W	0.01	
8304.00†	91.020	269.653	6909.19	2284.23	-1441.10	-2114.51	40°24'36.695"N	104°50'08.671"W	0.01	
8404.00†	91.009	269.650	6907.42	2383.44	-1441.70	-2214.50	40°24'36.689"N	104°50'09.964"W	0.01	



Planned Wellpath Report

BOST FARM 33N-11A-L (REV-C.0) PWP

Page 5 of 10

**BAKER
HUGHES**
a GE company



REFERENCE WELLPATH IDENTIFICATION

Operator	SRC ENERGY	Slot	SLOT#07 BOST FARM 33N-11A-L (2666'FSL & 1174'FWL, SEC.07)
Area	COLORADO	Well	BOST FARM 33N-11A-L
Field	WELD COUNTY (NAD83,TRUE NORTH)	Wellbore	BOST FARM 33N-11A-L PWB
Facility	SEC.07-T05N-R66W		

WELLPATH DATA (185 stations) † = interpolated/extrapolated station

MD [ft]	Inclination [°]	Azimuth [°]	TVD [ft]	Vert Sect [ft]	North [ft]	East [ft]	Latitude	Longitude	DLS [°/100ft]	Comments
8504.00†	90.998	269.647	6905.67	2482.65	-1442.32	-2314.48	40°24'36.683"N	104°50'11.256"W	0.01	
8604.00†	90.987	269.645	6903.94	2581.86	-1442.93	-2414.46	40°24'36.677"N	104°50'12.549"W	0.01	
8704.00†	90.976	269.642	6902.22	2681.08	-1443.56	-2514.45	40°24'36.670"N	104°50'13.841"W	0.01	
8804.00†	90.965	269.639	6900.53	2780.29	-1444.18	-2614.43	40°24'36.664"N	104°50'15.134"W	0.01	
8904.00†	90.954	269.637	6898.86	2879.50	-1444.82	-2714.41	40°24'36.658"N	104°50'16.426"W	0.01	
9004.00†	90.943	269.634	6897.20	2978.72	-1445.45	-2814.40	40°24'36.651"N	104°50'17.719"W	0.01	
9104.00†	90.932	269.631	6895.56	3077.93	-1446.09	-2914.38	40°24'36.645"N	104°50'19.012"W	0.01	
9204.00†	90.921	269.629	6893.95	3177.15	-1446.74	-3014.37	40°24'36.638"N	104°50'20.304"W	0.01	
9304.00†	90.911	269.626	6892.35	3276.37	-1447.39	-3114.35	40°24'36.632"N	104°50'21.597"W	0.01	
9404.00†	90.900	269.623	6890.77	3375.59	-1448.05	-3214.34	40°24'36.625"N	104°50'22.889"W	0.01	
9504.00†	90.889	269.620	6889.21	3474.81	-1448.71	-3314.32	40°24'36.619"N	104°50'24.182"W	0.01	
9604.00†	90.878	269.618	6887.67	3574.03	-1449.37	-3414.31	40°24'36.612"N	104°50'25.474"W	0.01	
9704.00†	90.867	269.615	6886.14	3673.25	-1450.04	-3514.29	40°24'36.605"N	104°50'26.767"W	0.01	
9804.00†	90.856	269.612	6884.64	3772.47	-1450.71	-3614.28	40°24'36.598"N	104°50'28.059"W	0.01	
9904.00†	90.845	269.610	6883.15	3871.69	-1451.39	-3714.27	40°24'36.592"N	104°50'29.352"W	0.01	
10004.00†	90.834	269.607	6881.69	3970.92	-1452.08	-3814.25	40°24'36.585"N	104°50'30.644"W	0.01	
10104.00†	90.823	269.604	6880.24	4070.14	-1452.76	-3914.24	40°24'36.578"N	104°50'31.937"W	0.01	
10204.00†	90.812	269.602	6878.82	4169.37	-1453.46	-4014.23	40°24'36.571"N	104°50'33.230"W	0.01	
10304.00†	90.801	269.599	6877.41	4268.59	-1454.16	-4114.22	40°24'36.564"N	104°50'34.522"W	0.01	
10404.00†	90.791	269.596	6876.02	4367.82	-1454.86	-4214.21	40°24'36.556"N	104°50'35.815"W	0.01	
10504.00†	90.780	269.593	6874.65	4467.05	-1455.56	-4314.19	40°24'36.549"N	104°50'37.107"W	0.01	
10604.00†	90.769	269.591	6873.30	4566.28	-1456.28	-4414.18	40°24'36.542"N	104°50'38.400"W	0.01	
10704.00†	90.758	269.588	6871.96	4665.51	-1456.99	-4514.17	40°24'36.535"N	104°50'39.692"W	0.01	
10804.00†	90.747	269.585	6870.65	4764.74	-1457.71	-4614.16	40°24'36.528"N	104°50'40.985"W	0.01	
10904.00†	90.736	269.583	6869.36	4863.97	-1458.44	-4714.15	40°24'36.520"N	104°50'42.278"W	0.01	
11004.00†	90.725	269.580	6868.08	4963.20	-1459.17	-4814.14	40°24'36.513"N	104°50'43.570"W	0.01	
11104.00†	90.714	269.577	6866.83	5062.44	-1459.91	-4914.13	40°24'36.505"N	104°50'44.863"W	0.01	
11204.00†	90.703	269.575	6865.59	5161.67	-1460.65	-5014.12	40°24'36.498"N	104°50'46.155"W	0.01	
11304.00†	90.692	269.572	6864.37	5260.91	-1461.39	-5114.11	40°24'36.490"N	104°50'47.448"W	0.01	
11404.00†	90.682	269.569	6863.17	5360.14	-1462.14	-5214.10	40°24'36.483"N	104°50'48.741"W	0.01	



Planned Wellpath Report

BOST FARM 33N-11A-L (REV-C.0) PWP

Page 6 of 10



REFERENCE WELLPATH IDENTIFICATION

Operator	SRC ENERGY	Slot	SLOT#07 BOST FARM 33N-11A-L (2666'FSL & 1174'FWL, SEC.07)
Area	COLORADO	Well	BOST FARM 33N-11A-L
Field	WELD COUNTY (NAD83,TRUE NORTH)	Wellbore	BOST FARM 33N-11A-L PWB
Facility	SEC.07-T05N-R66W		

WELLPATH DATA (185 stations) † = interpolated/extrapolated station

MD [ft]	Inclination [°]	Azimuth [°]	TVD [ft]	Vert Sect [ft]	North [ft]	East [ft]	Latitude	Longitude	DLS [°/100ft]	Comments
11504.00†	90.671	269.566	6861.99	5459.38	-1462.90	-5314.09	40°24'36.475"N	104°50'50.033"W	0.01	
11604.00†	90.660	269.564	6860.83	5558.61	-1463.66	-5414.08	40°24'36.467"N	104°50'51.326"W	0.01	
11704.00†	90.649	269.561	6859.69	5657.85	-1464.42	-5514.07	40°24'36.459"N	104°50'52.618"W	0.01	
11804.00†	90.638	269.558	6858.57	5757.09	-1465.19	-5614.06	40°24'36.452"N	104°50'53.911"W	0.01	
11904.00†	90.627	269.556	6857.46	5856.33	-1465.96	-5714.05	40°24'36.444"N	104°50'55.204"W	0.01	
12004.00†	90.616	269.553	6856.38	5955.57	-1466.74	-5814.04	40°24'36.436"N	104°50'56.496"W	0.01	
12104.00†	90.605	269.550	6855.31	6054.81	-1467.52	-5914.03	40°24'36.428"N	104°50'57.789"W	0.01	
12204.00†	90.594	269.548	6854.26	6154.05	-1468.31	-6014.02	40°24'36.420"N	104°50'59.082"W	0.01	
12304.00†	90.583	269.545	6853.24	6253.30	-1469.10	-6114.01	40°24'36.412"N	104°51'00.374"W	0.01	
12404.00†	90.572	269.542	6852.23	6352.54	-1469.90	-6214.01	40°24'36.404"N	104°51'01.667"W	0.01	
12504.00†	90.562	269.539	6851.24	6451.78	-1470.70	-6314.00	40°24'36.396"N	104°51'02.959"W	0.01	
12604.00†	90.551	269.537	6850.27	6551.03	-1471.50	-6413.99	40°24'36.387"N	104°51'04.252"W	0.01	
12704.00†	90.540	269.534	6849.32	6650.27	-1472.32	-6513.98	40°24'36.379"N	104°51'05.545"W	0.01	
12804.00†	90.529	269.531	6848.38	6749.52	-1473.13	-6613.97	40°24'36.371"N	104°51'06.837"W	0.01	
12904.00†	90.518	269.529	6847.47	6848.77	-1473.95	-6713.97	40°24'36.362"N	104°51'08.130"W	0.01	
13004.00†	90.507	269.526	6846.58	6948.02	-1474.78	-6813.96	40°24'36.354"N	104°51'09.423"W	0.01	
13104.00†	90.496	269.523	6845.70	7047.26	-1475.61	-6913.95	40°24'36.345"N	104°51'10.715"W	0.01	
13204.00†	90.485	269.521	6844.84	7146.51	-1476.44	-7013.94	40°24'36.337"N	104°51'12.008"W	0.01	
13304.00†	90.474	269.518	6844.01	7245.76	-1477.28	-7113.94	40°24'36.328"N	104°51'13.300"W	0.01	
13404.00†	90.463	269.515	6843.19	7345.02	-1478.12	-7213.93	40°24'36.320"N	104°51'14.593"W	0.01	
13504.00†	90.453	269.512	6842.39	7444.27	-1478.97	-7313.92	40°24'36.311"N	104°51'15.886"W	0.01	
13604.00†	90.442	269.510	6841.61	7543.52	-1479.83	-7413.92	40°24'36.302"N	104°51'17.178"W	0.01	
13704.00†	90.431	269.507	6840.85	7642.77	-1480.68	-7513.91	40°24'36.294"N	104°51'18.471"W	0.01	
13804.00†	90.420	269.504	6840.10	7742.03	-1481.55	-7613.90	40°24'36.285"N	104°51'19.764"W	0.01	
13904.00†	90.409	269.502	6839.38	7841.28	-1482.41	-7713.90	40°24'36.276"N	104°51'21.056"W	0.01	
14004.00†	90.398	269.499	6838.68	7940.54	-1483.29	-7813.89	40°24'36.267"N	104°51'22.349"W	0.01	
14104.00†	90.387	269.496	6837.99	8039.79	-1484.16	-7913.89	40°24'36.258"N	104°51'23.642"W	0.01	
14204.00†	90.376	269.494	6837.33	8139.05	-1485.04	-8013.88	40°24'36.249"N	104°51'24.934"W	0.01	
14304.00†	90.365	269.491	6836.68	8238.31	-1485.93	-8113.87	40°24'36.240"N	104°51'26.227"W	0.01	
14404.00†	90.354	269.488	6836.05	8337.56	-1486.82	-8213.87	40°24'36.231"N	104°51'27.520"W	0.01	



Planned Wellpath Report

BOST FARM 33N-11A-L (REV-C.0) PWP

Page 7 of 10



REFERENCE WELLPATH IDENTIFICATION

Operator	SRC ENERGY	Slot	SLOT#07 BOST FARM 33N-11A-L (2666'FSL & 1174'FWL, SEC.07)
Area	COLORADO	Well	BOST FARM 33N-11A-L
Field	WELD COUNTY (NAD83,TRUE NORTH)	Wellbore	BOST FARM 33N-11A-L PWB
Facility	SEC.07-T05N-R66W		

WELLPATH DATA (185 stations) † = interpolated/extrapolated station

MD [ft]	Inclination [°]	Azimuth [°]	TVD [ft]	Vert Sect [ft]	North [ft]	East [ft]	Latitude	Longitude	DLS [°/100ft]	Comments
14504.00†	90.343	269.485	6835.44	8436.82	-1487.72	-8313.86	40°24'36.222"N	104°51'28.812"W	0.01	
14604.00†	90.333	269.483	6834.85	8536.08	-1488.62	-8413.86	40°24'36.212"N	104°51'30.105"W	0.01	
14704.00†	90.322	269.480	6834.28	8635.34	-1489.52	-8513.85	40°24'36.203"N	104°51'31.397"W	0.01	
14804.00†	90.311	269.477	6833.73	8734.60	-1490.43	-8613.84	40°24'36.194"N	104°51'32.690"W	0.01	
14904.00†	90.300	269.475	6833.20	8833.86	-1491.35	-8713.84	40°24'36.184"N	104°51'33.983"W	0.01	
15004.00†	90.289	269.472	6832.68	8933.13	-1492.27	-8813.83	40°24'36.175"N	104°51'35.275"W	0.01	
15104.00†	90.278	269.469	6832.19	9032.39	-1493.19	-8913.83	40°24'36.165"N	104°51'36.568"W	0.01	
15204.00†	90.267	269.467	6831.71	9131.65	-1494.12	-9013.82	40°24'36.156"N	104°51'37.861"W	0.01	
15304.00†	90.256	269.464	6831.26	9230.92	-1495.05	-9113.82	40°24'36.146"N	104°51'39.153"W	0.01	
15404.00†	90.245	269.461	6830.82	9330.18	-1495.99	-9213.81	40°24'36.137"N	104°51'40.446"W	0.01	
15504.00†	90.234	269.458	6830.40	9429.45	-1496.93	-9313.81	40°24'36.127"N	104°51'41.739"W	0.01	
15604.00†	90.224	269.456	6830.00	9528.71	-1497.88	-9413.80	40°24'36.117"N	104°51'43.031"W	0.01	
15704.00†	90.213	269.453	6829.62	9627.98	-1498.83	-9513.80	40°24'36.107"N	104°51'44.324"W	0.01	
15804.00†	90.202	269.450	6829.26	9727.25	-1499.79	-9613.79	40°24'36.098"N	104°51'45.617"W	0.01	
15904.00†	90.191	269.448	6828.91	9826.51	-1500.75	-9713.79	40°24'36.088"N	104°51'46.909"W	0.01	
16004.00†	90.180	269.445	6828.59	9925.78	-1501.72	-9813.78	40°24'36.078"N	104°51'48.202"W	0.01	
16104.00†	90.169	269.442	6828.29	10025.05	-1502.69	-9913.77	40°24'36.068"N	104°51'49.495"W	0.01	
16204.00†	90.158	269.440	6828.00	10124.32	-1503.67	-10013.77	40°24'36.058"N	104°51'50.787"W	0.01	
16304.00†	90.147	269.437	6827.73	10223.59	-1504.65	-10113.76	40°24'36.048"N	104°51'52.080"W	0.01	
16404.00†	90.136	269.434	6827.49	10322.86	-1505.63	-10213.76	40°24'36.037"N	104°51'53.373"W	0.01	
16504.00†	90.125	269.431	6827.26	10422.13	-1506.62	-10313.75	40°24'36.027"N	104°51'54.665"W	0.01	
16604.00†	90.114	269.429	6827.05	10521.41	-1507.62	-10413.75	40°24'36.017"N	104°51'55.958"W	0.01	
16704.00†	90.104	269.426	6826.86	10620.68	-1508.62	-10513.74	40°24'36.007"N	104°51'57.251"W	0.01	
16804.00†	90.093	269.423	6826.69	10719.95	-1509.62	-10613.74	40°24'35.996"N	104°51'58.543"W	0.01	
16904.00†	90.082	269.421	6826.54	10819.23	-1510.63	-10713.73	40°24'35.986"N	104°51'59.836"W	0.01	
17004.00†	90.071	269.418	6826.40	10918.50	-1511.64	-10813.73	40°24'35.976"N	104°52'01.129"W	0.01	
17104.00†	90.060	269.415	6826.29	11017.78	-1512.66	-10913.72	40°24'35.965"N	104°52'02.421"W	0.01	
17204.00†	90.049	269.413	6826.19	11117.05	-1513.68	-11013.72	40°24'35.954"N	104°52'03.714"W	0.01	
17304.00†	90.038	269.410	6826.12	11216.33	-1514.71	-11113.71	40°24'35.944"N	104°52'05.007"W	0.01	
17404.00†	90.027	269.407	6826.06	11315.61	-1515.74	-11213.71	40°24'35.933"N	104°52'06.299"W	0.01	



Planned Wellpath Report

BOST FARM 33N-11A-L (REV-C.0) PWP

Page 8 of 10



REFERENCE WELLPATH IDENTIFICATION

Operator	SRC ENERGY	Slot	SLOT#07 BOST FARM 33N-11A-L (2666'FSL & 1174'FWL, SEC.07)
Area	COLORADO	Well	BOST FARM 33N-11A-L
Field	WELD COUNTY (NAD83,TRUE NORTH)	Wellbore	BOST FARM 33N-11A-L PWB
Facility	SEC.07-T05N-R66W		

WELLPATH DATA (185 stations) † = interpolated/extrapolated station

MD [ft]	Inclination [°]	Azimuth [°]	TVD [ft]	Vert Sect [ft]	North [ft]	East [ft]	Latitude	Longitude	DLS [°/100ft]	Comments
17504.00†	90.016	269.404	6826.02	11414.88	-1516.78	-11313.70	40°24'35.923"N	104°52'07.592"W	0.01	
17604.00†	90.005	269.402	6826.00	11514.16	-1517.82	-11413.70	40°24'35.912"N	104°52'08.884"W	0.01	
17653.97	90.000	269.400	6826.00 ²	11563.77	-1518.35	-11463.66	40°24'35.906"N	104°52'09.530"W	0.01	End of 3D Arc
17704.00†	90.000	269.400	6826.00	11613.44	-1518.87	-11513.69	40°24'35.901"N	104°52'10.177"W	0.00	
17753.95	90.000	269.400	6826.00 ³	11663.03	-1519.39	-11563.64	40°24'35.896"N	104°52'10.823"W	0.00	End of Tangent

HOLE & CASING SECTIONS - Ref Wellbore: BOST FARM 33N-11A-L PWB Ref Wellpath: BOST FARM 33N-11A-L (REV-C.0) PWP

String/Diameter	Start MD [ft]	End MD [ft]	Interval [ft]	Start TVD [ft]	End TVD [ft]	Start N/S [ft]	Start E/W [ft]	End N/S [ft]	End E/W [ft]
13.5in Open Hole	4.00	1750.00	1746.00	4.00	1727.53	0.00	0.00	-179.60	-93.04
9.625in Casing Surface	4.00	1750.00	1746.00	4.00	1727.53	0.00	0.00	-179.60	-93.04
8.5in Open Hole	1750.00	17753.95	16003.95	1727.53	6826.00	-179.60	-93.04	-1519.39	-11563.64



Planned Wellpath Report

BOST FARM 33N-11A-L (REV-C.0) PWP

Page 9 of 10



REFERENCE WELLPATH IDENTIFICATION

Operator	SRC ENERGY	Slot	SLOT#07 BOST FARM 33N-11A-L (2666'FSL & 1174'FWL, SEC.07)
Area	COLORADO	Well	BOST FARM 33N-11A-L
Field	WELD COUNTY (NAD83,TRUE NORTH)	Wellbore	BOST FARM 33N-11A-L PWB
Facility	SEC.07-T05N-R66W		

TARGETS

Name	MD [ft]	TVD [ft]	North [ft]	East [ft]	Grid East [US ft]	Grid North [US ft]	Latitude	Longitude	Shape
SEC.07-T05N-R66W		2.00	-114.39	84.11	3187161.59	1394309.79	40°24'49.806"N	104°49'40.249"W	polygon
SEC.11-T05N-R67W		2.00	-114.39	84.11	3187161.59	1394309.79	40°24'49.806"N	104°49'40.249"W	polygon
SEC.12-T05N-R67W		2.00	-114.39	84.11	3187161.59	1394309.79	40°24'49.806"N	104°49'40.249"W	polygon
BOST FARM 33N-11A-L BHL ON PLAT (1150'FSL & 360'FWL, SEC.11)		6808.00	-1516.62	-11253.69	3175835.21	1392821.76	40°24'35.924"N	104°52'06.816"W	point
BOST FARM 33N-11A-L BPZ ON PLAT (1152'FSL & 460'FWL, SEC.11)		6808.00	-1515.94	-11153.71	3175935.17	1392823.20	40°24'35.932"N	104°52'05.524"W	point
BOST FARM 33N-11A-L BHL REV-1 (1150'FSL & 360'FWL, SEC.11)		6826.00	-1516.66	-11253.69	3175835.21	1392821.72	40°24'35.924"N	104°52'06.816"W	point
3) BOST FARM 33N-11A-L BHL REV-2 (1143'FSL & 50'FWL, SEC.11)	17753.95	6826.00	-1519.39	-11563.64	3175525.30	1392816.64	40°24'35.896"N	104°52'10.823"W	point
BOST FARM 33N-11A-L BPZ REV-1 (1152'FSL & 460'FWL, SEC.11)		6826.00	-1515.90	-11153.74	3175935.14	1392823.24	40°24'35.932"N	104°52'05.524"W	point
2) BOST FARM 33N-11A-L BPZ REV-2 (1145'FSL & 150'FWL, SEC.11)	17653.97	6826.00	-1518.35	-11463.66	3175625.26	1392818.45	40°24'35.906"N	104°52'09.530"W	point
1) BOST FARM 33N-11A-L TOP OF PROD REV-1 (1223'FSL & 150'FEL, SEC.12)	7505.74	6924.00	-1436.41	-1316.41	3185771.19	1392977.25	40°24'36.742"N	104°49'58.354"W	point
BOST FARM 33N-11A-L TOP OF PROD ON PLAT (1223'FSL & 150'FEL, SEC.12)		7009.00	-1436.45	-1316.37	3185771.22	1392977.21	40°24'36.742"N	104°49'58.354"W	point



Planned Wellpath Report

BOST FARM 33N-11A-L (REV-C.0) PWP

Page 10 of 10



REFERENCE WELLPATH IDENTIFICATION			
Operator	SRC ENERGY	Slot	SLOT#07 BOST FARM 33N-11A-L (2666'FSL & 1174'FWL, SEC.07)
Area	COLORADO	Well	BOST FARM 33N-11A-L
Field	WELD COUNTY (NAD83,TRUE NORTH)	Wellbore	BOST FARM 33N-11A-L PWB
Facility	SEC.07-T05N-R66W		

SURVEY PROGRAM - Ref Wellbore: BOST FARM 33N-11A-L PWB Ref Wellpath: BOST FARM 33N-11A-L (REV-C.0) PWP				
Start MD [ft]	End MD [ft]	Positional Uncertainty Model	Log Name/Comment	Wellbore
4.00	1750.00	BHI NaviTrak (Axial)		BOST FARM 33N-11A-L PWB
1750.00	17753.95	BHI AutoTrak Curve (MagCAD+IFR1, Short spacing)		BOST FARM 33N-11A-L PWB