

SRC ENERGY

Location: COLORADO Slot: SLOT#01 BOST FARM 32N-11B-L (2666'FSL & 1054'FWL, SEC.07)
Field: WELD COUNTY (NAD83,TRUE NORTH) Well: BOST FARM 32N-11B-L
Facility: SEC.07-T05N-R66W Wellbore: BOST FARM 32N-11B-L PWB

Plot reference wellpath is BOST FARM 32N-11B-L (REV-C.0) PWP	Grid System: NAD83 / Lambert Colorado SP, Northern Zone (501), US feet
True vertical depths are referenced to IKON 12 (4) (RKB)	North Reference: True north
Measured depths are referenced to IKON 12 (4) (RKB)	Scale: True distance
IKON 12 (4) (RKB) to Mean Sea Level: 4881 feet	Depths are in feet
Mean Sea Level to Mud line (At Slot: SLOT#01 BOST FARM 32N-11B-L (2666'FSL & 1054'FWL, SEC.07)): 0 feet	Created by: harisab on 2019-01-03
Coordinates are in feet referenced to Slot	Database: WA DENVER

Location Information

Facility Name			Grid East (US ft)	Grid North (US ft)	Latitude	Longitude
SEC.07-T05N-R66W			3187161.591	1394309.789	40°24'49.806"N	104°49'40.249"W
Slot	Local N (ft)	Local E (ft)	Grid East (US ft)	Grid North (US ft)	Latitude	Longitude
SLOT#01 BOST FARM 32N-11B-L (2666'FSL & 1054'FWL, SEC.07)	115.49	-204.13	3186956.601	1394423.722	40°24'50.947"N	104°49'42.888"W
IKON 12 (4) (RKB) to Mud line (At Slot: SLOT#01 BOST FARM 32N-11B-L (2666'FSL & 1054'FWL, SEC.07))					4881ft	
Mean Sea Level to Mud line (At Slot: SLOT#01 BOST FARM 32N-11B-L (2666'FSL & 1054'FWL, SEC.07))					0ft	
IKON 12 (4) (RKB) to Mean Sea Level					4881ft	

Survey Program

Start MD (ft)	End MD (ft)	Tool	Model	Log Name/Comment	Wellbore
4.00	1750.00	BHI NaviTrak	BHI NaviTrak (Axial)		BOST FARM 32N-11B-L PWB
1750.00	17624.98	BHI AutoTrak Curve	BHI AutoTrak Curve (MagCAD+IFR1, Short spacing)		BOST FARM 32N-11B-L PWB

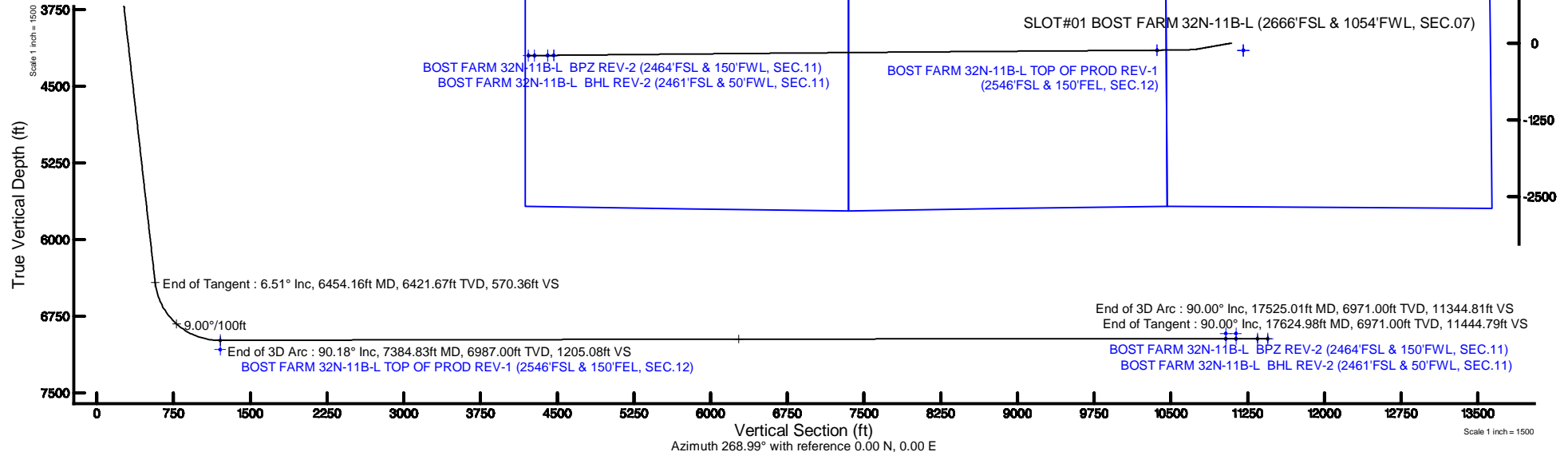


SRC ENERGY

BAKER
HUGHES
a GE company



N
TRUE
W E
BGM (1900.0 to 2019.0) Dip: 66.80° Field: 5262 nT
Magnetic North is 8.31 degrees East of True North (at 10/1/2018)
To correct azimuth from Magnetic to True add 8.31 degrees



Targets

Name	MD (ft)	TVD (ft)	Local N (ft)	Local E (ft)	Grid East (US ft)	Grid North (US ft)	Latitude	Longitude
SEC.07-T05N-R66W		5.00	-115.49	204.13	3187161.59	1394309.79	40°24'49.806"N	104°49'40.249"W
SEC.11-T05N-R67W		5.00	-115.49	204.13	3187161.59	1394309.79	40°24'49.806"N	104°49'40.249"W
SEC.12-T05N-R67W		5.00	-115.49	204.13	3187161.59	1394309.79	40°24'49.806"N	104°49'40.249"W
BOST FARM 32N-11B-L BHL ON PLAT (2468'FSL & 360'FWL, SEC.11)	6920.00	-199.32	-11133.07	3175825.82	1394140.12	40°24'48.963"N	104°52'06.816"W	
BOST FARM 32N-11B-L BHZ ON PLAT (2471'FSL & 460'FWL, SEC.11)	6920.00	-199.27	-11033.10	3175825.77	1394141.93	40°24'48.964"N	104°52'05.524"W	
BOST FARM 32N-11B-L BHL REV-1 (2648'FSL & 360'FWL, SEC.11)	6971.00	-199.30	-11133.07	3175825.82	1394140.14	40°24'48.963"N	104°52'06.816"W	
BOST FARM 32N-11B-L BHL REV-2 (2461'FSL & 50'FWL, SEC.11)	17624.98	6971.00	-202.09	-11443.00	3175815.93	1394135.00	40°24'48.924"N	104°52'10.823"W
BOST FARM 32N-11B-L BHZ REV-1 (2471'FSL & 460'FWL, SEC.11)		6971.00	-198.23	-11033.13	3175825.74	1394141.97	40°24'48.964"N	104°52'05.524"W
BOST FARM 32N-11B-L BHZ REV-2 (2464'FSL & 150'FWL, SEC.11)	17525.01	6971.00	-201.05	-11343.03	3175815.88	1394136.81	40°24'48.938"N	104°52'05.530"W
BOST FARM 32N-11B-L TOP OF PROD REV-1 (2546'FSL & 150'FEL, SEC.12)	7384.83	6987.00	-114.36	-1203.25	3185754.30	1394300.25	40°24'49.817"N	104°49'58.444"W
BOST FARM 32N-11B-L TOP OF PROD ON PLAT (2466'FSL & 150'FEL, SEC.12)		7077.00	-114.36	-1203.25	3185754.30	1394300.25	40°24'49.817"N	104°49'58.444"W

Hole and Casing Sections

Name	Start MD (ft)	End MD (ft)	Interval (ft)	Start TVD (ft)	End TVD (ft)	Start Local N (ft)	Start Local E (ft)	End Local N (ft)	End Local E (ft)	Wellbore
13.5in Open Hole	4.00	1750.00	1746.00	4.00	1747.85	0.00	0.00	-7.57	-43.27	BOST FARM 32N-11B-L PWB
9.625in Casing Surface	4.00	1750.00	1746.00	4.00	1747.85	0.00	0.00	-7.57	-43.27	BOST FARM 32N-11B-L PWB
8.5in Open Hole	1750.00	17624.98	15874.98	1747.85	6971.00	-7.57	-43.27	-202.09	-11443.00	BOST FARM 32N-11B-L PWB

Well Profile Data

Design Comment	MD (ft)	Inc (°)	Az (°)	TVD (ft)	Local N (ft)	Local E (ft)	DLS (°/100ft)	VS (ft)
Tie On	4.00	0.000	260.082	4.00	0.00	0.00	0.00	0.00
End of Tangent	1200.00	0.000	260.082	1200.00	0.00	0.00	0.00	0.00
End of Build	1525.53	6.511	260.082	1524.83	-3.18	-18.20	2.00	18.25
End of Tangent	6454.16	6.511	260.082	6421.67	-99.44	-568.70	0.00	570.36
End of 3D Arc	7384.83	90.181	269.620	6987.00	-114.36	-1203.25	9.00	1205.08
End of 3D Arc	17525.01	90.000	269.400	6971.00	-201.05	-11343.03	0.00	11344.81
End of Tangent	17624.98	90.000	269.400	6971.00	-202.09	-11443.00	0.00	11444.79

BOST FARM 32N-11B-L (REV-C.0) LAS.las

~VERSION INFORMATION

VERS. 2.0 : CWLS LOG ASCII STANDARD-VERSION 2.0

WRAP. NO : ASCII DATA SECTION CONTAINS ONE ROW PER WELLPATH STATION

~WELL INFORMATION

#MNEM	.UNITS	DATA	:DESCRIPTION
#----	.-----	----	:-----
STRT	.ft	0.00	:START MD
STOP	.ft	17624.98	:STOP MD
STEP	.ft	0.0	:STEP (non-uniform increment)
NULL	.	-999.99	:NULL
COMP	.	SRC ENERGY	:OPERATOR
WELL	.	BOST FARM 32N-11B-L	:WELL
FLD	.	WELD COUNTY (NAD83,TRUE NORTH)	:FIELD
LOC	.	COLORADO	:AREA (aka: Location)
CNTY	.	N/A	:COUNTY
STAT	.	N/A	:STATE
CTRY	.	N/A	:COUNTRY
SRVC	.	Baker Hughes	:CONTRACTOR
DATE	.	09/24/2018	:LOG REV DATE
API	.		:API NUMBER

~OTHER INFORMATION

#Software: WellArchitect(R) Version 5.1

#MNEM	.UNITS	DATA	:DESCRIPTION
#----	.-----	----	:-----
WPTYPE	.	PLANNED WELLPATH	:WELLPATH TYPE
FACILITY	.	SEC.07-T05N-R66W	:FACILITY
SLOT	.	SLOT#01 BOST FARM 32N-11B-L (2666'FSL & 1054'FWL, SEC.07):SLOT	:SLOT
WELLBORE	.	BOST FARM 32N-11B-L PWB	:WELLBORE
WELLPATH	.	BOST FARM 32N-11B-L (REV-C.0) PWP	:WELLPATH
MDREFPT	.	IKON 12 (4') (RKB)	:MD REFERENCE POINT
TVDREFPT	.	IKON 12 (4') (RKB)	:TVD REFERENCE POINT
LCLREFPT	.	Slot	:LOCAL COORDINATE REFERENCE PT

BOST FARM 32N-11B-L (REV-C.0) LAS.las

VSAZIMUTH.deg	268.99	:VERTICAL SECTION AZIMUTH
VSORIGN .ft	0.00	:VERTICAL SECTION ORIGIN NORTH
VSORIGE .ft	0.00	:VERTICAL SECTION ORIGIN EAST

~CURVE (WELLPATH) INFORMATION

#MNEM	.UNITS	:DESCRIPTION
#----	.-----	:-----
DEPT	.ft	:MEASURED DEPTH
INC	.deg	:INCLINATION
AZI	.deg	:AZIMUTH
TVD	.ft	:TRUE VERTICAL DEPTH
SECT	.ft	:CROSS SECTION (CURTAIN/VERTICAL)
LOCALN	.ft	:LOCAL NORTH
LOCALE	.ft	:LOCAL EAST
LAT	.deg	:LATITUDE
LONG	.deg	:LONGITUDE
DLS	.deg/100ft	:DOGLEG SEVERITY

~ASCII DATA

0.00	0.00	260.08	0.00	0.00	0.00	0.00	40.4141520	-104.8285800	0.00
4.00	0.00	260.08	4.00	0.00	0.00	0.00	40.4141520	-104.8285800	0.00
104.00	0.00	260.08	104.00	0.00	0.00	0.00	40.4141520	-104.8285800	0.00
204.00	0.00	260.08	204.00	0.00	0.00	0.00	40.4141520	-104.8285800	0.00
304.00	0.00	260.08	304.00	0.00	0.00	0.00	40.4141520	-104.8285800	0.00
404.00	0.00	260.08	404.00	0.00	0.00	0.00	40.4141520	-104.8285800	0.00
504.00	0.00	260.08	504.00	0.00	0.00	0.00	40.4141520	-104.8285800	0.00
604.00	0.00	260.08	604.00	0.00	0.00	0.00	40.4141520	-104.8285800	0.00
704.00	0.00	260.08	704.00	0.00	0.00	0.00	40.4141520	-104.8285800	0.00
804.00	0.00	260.08	804.00	0.00	0.00	0.00	40.4141520	-104.8285800	0.00
904.00	0.00	260.08	904.00	0.00	0.00	0.00	40.4141520	-104.8285800	0.00
1004.00	0.00	260.08	1004.00	0.00	0.00	0.00	40.4141520	-104.8285800	0.00
1104.00	0.00	260.08	1104.00	0.00	0.00	0.00	40.4141520	-104.8285800	0.00
1200.00	0.00	260.08	1200.00	0.00	0.00	0.00	40.4141520	-104.8285800	0.00
1204.00	0.08	260.08	1204.00	0.00	0.00	0.00	40.4141520	-104.8285800	2.00

BOST FARM 32N-11B-L (REV-C.0) LAS.las

1304.00	2.08	260.08	1303.98	1.86	-0.33	-1.86	40.4141511	-104.8285867	2.00
1404.00	4.08	260.08	1403.83	7.17	-1.25	-7.15	40.4141486	-104.8286057	2.00
1504.00	6.08	260.08	1503.43	15.92	-2.78	-15.87	40.4141444	-104.8286370	2.00
1525.53	6.51	260.08	1524.83	18.25	-3.18	-18.20	40.4141433	-104.8286454	2.00
1604.00	6.51	260.08	1602.79	27.04	-4.71	-26.96	40.4141391	-104.8286768	0.00
1704.00	6.51	260.08	1702.15	38.25	-6.67	-38.13	40.4141337	-104.8287169	0.00
1804.00	6.51	260.08	1801.50	49.45	-8.62	-49.30	40.4141283	-104.8287571	0.00
1904.00	6.51	260.08	1900.86	60.65	-10.57	-60.47	40.4141230	-104.8287972	0.00
2004.00	6.51	260.08	2000.21	71.85	-12.53	-71.64	40.4141176	-104.8288373	0.00
2104.00	6.51	260.08	2099.57	83.05	-14.48	-82.81	40.4141123	-104.8288774	0.00
2204.00	6.51	260.08	2198.92	94.26	-16.43	-93.98	40.4141069	-104.8289175	0.00
2304.00	6.51	260.08	2298.28	105.46	-18.39	-105.15	40.4141015	-104.8289576	0.00
2404.00	6.51	260.08	2397.63	116.66	-20.34	-116.32	40.4140962	-104.8289977	0.00
2504.00	6.51	260.08	2496.99	127.86	-22.29	-127.49	40.4140908	-104.8290378	0.00
2604.00	6.51	260.08	2596.34	139.06	-24.24	-138.66	40.4140855	-104.8290779	0.00
2704.00	6.51	260.08	2695.70	150.27	-26.20	-149.83	40.4140801	-104.8291180	0.00
2804.00	6.51	260.08	2795.05	161.47	-28.15	-161.00	40.4140747	-104.8291582	0.00
2904.00	6.51	260.08	2894.41	172.67	-30.10	-172.17	40.4140694	-104.8291983	0.00
3004.00	6.51	260.08	2993.76	183.87	-32.06	-183.34	40.4140640	-104.8292384	0.00
3104.00	6.51	260.08	3093.12	195.07	-34.01	-194.50	40.4140586	-104.8292785	0.00
3204.00	6.51	260.08	3192.48	206.28	-35.96	-205.67	40.4140533	-104.8293186	0.00
3304.00	6.51	260.08	3291.83	217.48	-37.91	-216.84	40.4140479	-104.8293587	0.00
3404.00	6.51	260.08	3391.19	228.68	-39.87	-228.01	40.4140426	-104.8293988	0.00
3504.00	6.51	260.08	3490.54	239.88	-41.82	-239.18	40.4140372	-104.8294389	0.00
3604.00	6.51	260.08	3589.90	251.09	-43.77	-250.35	40.4140318	-104.8294790	0.00
3704.00	6.51	260.08	3689.25	262.29	-45.73	-261.52	40.4140265	-104.8295192	0.00
3804.00	6.51	260.08	3788.61	273.49	-47.68	-272.69	40.4140211	-104.8295593	0.00
3904.00	6.51	260.08	3887.96	284.69	-49.63	-283.86	40.4140158	-104.8295994	0.00
4004.00	6.51	260.08	3987.32	295.89	-51.59	-295.03	40.4140104	-104.8296395	0.00
4104.00	6.51	260.08	4086.67	307.10	-53.54	-306.20	40.4140050	-104.8296796	0.00
4204.00	6.51	260.08	4186.03	318.30	-55.49	-317.37	40.4139997	-104.8297197	0.00
4304.00	6.51	260.08	4285.38	329.50	-57.44	-328.54	40.4139943	-104.8297598	0.00
4404.00	6.51	260.08	4384.74	340.70	-59.40	-339.71	40.4139890	-104.8297999	0.00
4504.00	6.51	260.08	4484.09	351.90	-61.35	-350.88	40.4139836	-104.8298400	0.00

BOST FARM 32N-11B-L (REV-C.0) LAS.las

4604.00	6.51	260.08	4583.45	363.11	-63.30	-362.05	40.4139782	-104.8298801	0.00
4704.00	6.51	260.08	4682.80	374.31	-65.26	-373.21	40.4139729	-104.8299203	0.00
4804.00	6.51	260.08	4782.16	385.51	-67.21	-384.38	40.4139675	-104.8299604	0.00
4904.00	6.51	260.08	4881.51	396.71	-69.16	-395.55	40.4139622	-104.8300005	0.00
5004.00	6.51	260.08	4980.87	407.91	-71.11	-406.72	40.4139568	-104.8300406	0.00
5104.00	6.51	260.08	5080.22	419.12	-73.07	-417.89	40.4139514	-104.8300807	0.00
5204.00	6.51	260.08	5179.58	430.32	-75.02	-429.06	40.4139461	-104.8301208	0.00
5304.00	6.51	260.08	5278.93	441.52	-76.97	-440.23	40.4139407	-104.8301609	0.00
5404.00	6.51	260.08	5378.29	452.72	-78.93	-451.40	40.4139353	-104.8302010	0.00
5504.00	6.51	260.08	5477.64	463.93	-80.88	-462.57	40.4139300	-104.8302411	0.00
5604.00	6.51	260.08	5577.00	475.13	-82.83	-473.74	40.4139246	-104.8302813	0.00
5704.00	6.51	260.08	5676.35	486.33	-84.79	-484.91	40.4139193	-104.8303214	0.00
5804.00	6.51	260.08	5775.71	497.53	-86.74	-496.08	40.4139139	-104.8303615	0.00
5904.00	6.51	260.08	5875.06	508.73	-88.69	-507.25	40.4139085	-104.8304016	0.00
6004.00	6.51	260.08	5974.42	519.94	-90.64	-518.42	40.4139032	-104.8304417	0.00
6104.00	6.51	260.08	6073.77	531.14	-92.60	-529.59	40.4138978	-104.8304818	0.00
6204.00	6.51	260.08	6173.13	542.34	-94.55	-540.76	40.4138925	-104.8305219	0.00
6304.00	6.51	260.08	6272.48	553.54	-96.50	-551.92	40.4138871	-104.8305620	0.00
6404.00	6.51	260.08	6371.84	564.74	-98.46	-563.09	40.4138817	-104.8306021	0.00
6454.16	6.51	260.08	6421.67	570.36	-99.44	-568.70	40.4138790	-104.8306223	0.00
6504.00	10.96	264.01	6470.92	577.88	-100.42	-576.20	40.4138763	-104.8306492	9.00
6604.00	19.93	266.63	6567.21	604.44	-102.41	-602.72	40.4138709	-104.8307444	9.00
6704.00	28.93	267.66	6658.17	645.73	-104.41	-643.99	40.4138654	-104.8308926	9.00
6804.00	37.92	268.23	6741.55	700.74	-106.35	-698.98	40.4138600	-104.8310901	9.00
6904.00	46.92	268.60	6815.30	768.12	-108.20	-766.33	40.4138550	-104.8313320	9.00
7004.00	55.91	268.88	6877.60	846.21	-109.90	-844.40	40.4138503	-104.8316123	9.00
7104.00	64.91	269.11	6926.93	933.08	-111.41	-931.26	40.4138461	-104.8319243	9.00
7204.00	73.91	269.31	6962.06	1026.60	-112.70	-1024.77	40.4138426	-104.8322601	9.00
7304.00	82.91	269.48	6982.13	1124.45	-113.73	-1122.62	40.4138397	-104.8326115	9.00
7384.83	90.18	269.62	6987.00	1205.08	-114.36	-1203.25	40.4138380	-104.8329010	9.00
7404.00	90.18	269.62	6986.94	1224.25	-114.49	-1222.42	40.4138376	-104.8329698	0.00
7504.00	90.18	269.62	6986.63	1324.24	-115.16	-1322.41	40.4138358	-104.8333289	0.00
7604.00	90.18	269.62	6986.32	1424.23	-115.83	-1422.41	40.4138340	-104.8336880	0.00
7704.00	90.18	269.61	6986.01	1524.23	-116.50	-1522.41	40.4138321	-104.8340471	0.00

BOST FARM 32N-11B-L (REV-C.0) LAS.las

7804.00	90.17	269.61	6985.70	1624.22	-117.18	-1622.41	40.4138302	-104.8344062	0.00
7904.00	90.17	269.61	6985.40	1724.21	-117.86	-1722.40	40.4138283	-104.8347653	0.00
8004.00	90.17	269.61	6985.11	1824.21	-118.54	-1822.40	40.4138264	-104.8351244	0.00
8104.00	90.17	269.61	6984.81	1924.20	-119.23	-1922.40	40.4138245	-104.8354835	0.00
8204.00	90.17	269.60	6984.52	2024.20	-119.92	-2022.39	40.4138226	-104.8358426	0.00
8304.00	90.16	269.60	6984.23	2124.19	-120.62	-2122.39	40.4138207	-104.8362018	0.00
8404.00	90.16	269.60	6983.95	2224.18	-121.31	-2222.39	40.4138187	-104.8365609	0.00
8504.00	90.16	269.60	6983.66	2324.18	-122.02	-2322.39	40.4138168	-104.8369200	0.00
8604.00	90.16	269.59	6983.38	2424.17	-122.72	-2422.38	40.4138148	-104.8372791	0.00
8704.00	90.16	269.59	6983.11	2524.17	-123.44	-2522.38	40.4138128	-104.8376382	0.00
8804.00	90.16	269.59	6982.83	2624.16	-124.15	-2622.38	40.4138108	-104.8379973	0.00
8904.00	90.15	269.59	6982.56	2724.15	-124.87	-2722.37	40.4138088	-104.8383564	0.00
9004.00	90.15	269.58	6982.30	2824.15	-125.59	-2822.37	40.4138068	-104.8387155	0.00
9104.00	90.15	269.58	6982.03	2924.14	-126.32	-2922.37	40.4138048	-104.8390746	0.00
9204.00	90.15	269.58	6981.77	3024.14	-127.05	-3022.36	40.4138028	-104.8394337	0.00
9304.00	90.15	269.58	6981.52	3124.13	-127.78	-3122.36	40.4138007	-104.8397928	0.00
9404.00	90.15	269.58	6981.26	3224.13	-128.52	-3222.36	40.4137987	-104.8401519	0.00
9504.00	90.14	269.57	6981.01	3324.12	-129.26	-3322.36	40.4137966	-104.8405110	0.00
9604.00	90.14	269.57	6980.76	3424.11	-130.00	-3422.35	40.4137945	-104.8408701	0.00
9704.00	90.14	269.57	6980.52	3524.11	-130.75	-3522.35	40.4137924	-104.8412292	0.00
9804.00	90.14	269.57	6980.28	3624.10	-131.50	-3622.35	40.4137903	-104.8415883	0.00
9904.00	90.14	269.57	6980.04	3724.10	-132.26	-3722.34	40.4137882	-104.8419474	0.00
10004.00	90.13	269.56	6979.80	3824.09	-133.02	-3822.34	40.4137861	-104.8423065	0.00
10104.00	90.13	269.56	6979.57	3924.09	-133.78	-3922.34	40.4137839	-104.8426656	0.00
10204.00	90.13	269.56	6979.34	4024.08	-134.55	-4022.33	40.4137818	-104.8430247	0.00
10304.00	90.13	269.56	6979.11	4124.08	-135.32	-4122.33	40.4137796	-104.8433838	0.00
10404.00	90.13	269.56	6978.89	4224.07	-136.10	-4222.33	40.4137774	-104.8437429	0.00
10504.00	90.13	269.55	6978.67	4324.07	-136.88	-4322.32	40.4137753	-104.8441020	0.00
10604.00	90.12	269.55	6978.45	4424.06	-137.66	-4422.32	40.4137731	-104.8444611	0.00
10704.00	90.12	269.55	6978.24	4524.06	-138.45	-4522.32	40.4137708	-104.8448202	0.00
10804.00	90.12	269.55	6978.03	4624.05	-139.24	-4622.31	40.4137686	-104.8451792	0.00
10904.00	90.12	269.54	6977.82	4724.05	-140.03	-4722.31	40.4137664	-104.8455383	0.00
11004.00	90.12	269.54	6977.62	4824.04	-140.83	-4822.31	40.4137641	-104.8458974	0.00
11104.00	90.11	269.54	6977.42	4924.04	-141.63	-4922.30	40.4137619	-104.8462565	0.00

BOST FARM 32N-11B-L (REV-C.0) LAS.las

11204.00	90.11	269.54	6977.22	5024.03	-142.44	-5022.30	40.4137596	-104.8466156	0.00
11304.00	90.11	269.54	6977.02	5124.03	-143.24	-5122.30	40.4137574	-104.8469747	0.00
11404.00	90.11	269.53	6976.83	5224.02	-144.06	-5222.29	40.4137551	-104.8473338	0.00
11504.00	90.11	269.53	6976.64	5324.02	-144.87	-5322.29	40.4137528	-104.8476929	0.00
11604.00	90.11	269.53	6976.46	5424.01	-145.70	-5422.29	40.4137504	-104.8480520	0.00
11704.00	90.10	269.53	6976.27	5524.01	-146.52	-5522.28	40.4137481	-104.8484111	0.00
11804.00	90.10	269.52	6976.09	5624.00	-147.35	-5622.28	40.4137458	-104.8487702	0.00
11904.00	90.10	269.52	6975.92	5724.00	-148.18	-5722.28	40.4137434	-104.8491293	0.00
12004.00	90.10	269.52	6975.74	5824.00	-149.02	-5822.27	40.4137411	-104.8494884	0.00
12104.00	90.10	269.52	6975.57	5923.99	-149.86	-5922.27	40.4137387	-104.8498475	0.00
12204.00	90.10	269.52	6975.41	6023.99	-150.70	-6022.26	40.4137363	-104.8502066	0.00
12304.00	90.09	269.51	6975.24	6123.98	-151.55	-6122.26	40.4137339	-104.8505657	0.00
12404.00	90.09	269.51	6975.08	6223.98	-152.40	-6222.26	40.4137315	-104.8509248	0.00
12504.00	90.09	269.51	6974.92	6323.97	-153.25	-6322.25	40.4137291	-104.8512839	0.00
12604.00	90.09	269.51	6974.77	6423.97	-154.11	-6422.25	40.4137267	-104.8516430	0.00
12704.00	90.09	269.51	6974.62	6523.97	-154.97	-6522.25	40.4137243	-104.8520021	0.00
12804.00	90.08	269.50	6974.47	6623.96	-155.84	-6622.24	40.4137218	-104.8523612	0.00
12904.00	90.08	269.50	6974.32	6723.96	-156.71	-6722.24	40.4137193	-104.8527203	0.00
13004.00	90.08	269.50	6974.18	6823.95	-157.58	-6822.23	40.4137169	-104.8530794	0.00
13104.00	90.08	269.50	6974.04	6923.95	-158.46	-6922.23	40.4137144	-104.8534385	0.00
13204.00	90.08	269.49	6973.91	7023.94	-159.34	-7022.23	40.4137119	-104.8537976	0.00
13304.00	90.08	269.49	6973.77	7123.94	-160.23	-7122.22	40.4137094	-104.8541567	0.00
13404.00	90.07	269.49	6973.64	7223.94	-161.12	-7222.22	40.4137069	-104.8545158	0.00
13504.00	90.07	269.49	6973.52	7323.93	-162.01	-7322.21	40.4137043	-104.8548749	0.00
13604.00	90.07	269.49	6973.39	7423.93	-162.90	-7422.21	40.4137018	-104.8552340	0.00
13704.00	90.07	269.48	6973.27	7523.93	-163.80	-7522.21	40.4136992	-104.8555931	0.00
13804.00	90.07	269.48	6973.15	7623.92	-164.71	-7622.20	40.4136967	-104.8559522	0.00
13904.00	90.07	269.48	6973.04	7723.92	-165.62	-7722.20	40.4136941	-104.8563112	0.00
14004.00	90.06	269.48	6972.93	7823.91	-166.53	-7822.19	40.4136915	-104.8566703	0.00
14104.00	90.06	269.47	6972.82	7923.91	-167.44	-7922.19	40.4136889	-104.8570294	0.00
14204.00	90.06	269.47	6972.72	8023.91	-168.36	-8022.18	40.4136863	-104.8573885	0.00
14304.00	90.06	269.47	6972.61	8123.90	-169.29	-8122.18	40.4136837	-104.8577476	0.00
14404.00	90.06	269.47	6972.52	8223.90	-170.21	-8222.18	40.4136810	-104.8581067	0.00
14504.00	90.05	269.47	6972.42	8323.90	-171.14	-8322.17	40.4136784	-104.8584658	0.00

BOST FARM 32N-11B-L (REV-C.0) LAS.las

14604.00	90.05	269.46	6972.33	8423.89	-172.08	-8422.17	40.4136757	-104.8588249	0.00
14704.00	90.05	269.46	6972.24	8523.89	-173.02	-8522.16	40.4136731	-104.8591840	0.00
14804.00	90.05	269.46	6972.15	8623.89	-173.96	-8622.16	40.4136704	-104.8595431	0.00
14904.00	90.05	269.46	6972.07	8723.88	-174.90	-8722.15	40.4136677	-104.8599022	0.00
15004.00	90.05	269.46	6971.99	8823.88	-175.85	-8822.15	40.4136650	-104.8602613	0.00
15104.00	90.04	269.45	6971.91	8923.88	-176.81	-8922.14	40.4136623	-104.8606204	0.00
15204.00	90.04	269.45	6971.84	9023.87	-177.76	-9022.14	40.4136595	-104.8609795	0.00
15304.00	90.04	269.45	6971.77	9123.87	-178.73	-9122.14	40.4136568	-104.8613386	0.00
15404.00	90.04	269.45	6971.70	9223.87	-179.69	-9222.13	40.4136540	-104.8616977	0.00
15504.00	90.04	269.44	6971.64	9323.86	-180.66	-9322.13	40.4136513	-104.8620567	0.00
15604.00	90.03	269.44	6971.57	9423.86	-181.63	-9422.12	40.4136485	-104.8624158	0.00
15704.00	90.03	269.44	6971.52	9523.86	-182.61	-9522.12	40.4136457	-104.8627749	0.00
15804.00	90.03	269.44	6971.46	9623.85	-183.59	-9622.11	40.4136429	-104.8631340	0.00
15904.00	90.03	269.44	6971.41	9723.85	-184.57	-9722.11	40.4136401	-104.8634931	0.00
16004.00	90.03	269.43	6971.36	9823.85	-185.56	-9822.10	40.4136373	-104.8638522	0.00
16104.00	90.03	269.43	6971.31	9923.84	-186.55	-9922.10	40.4136345	-104.8642113	0.00
16204.00	90.02	269.43	6971.27	10023.84	-187.54	-10022.09	40.4136316	-104.8645704	0.00
16304.00	90.02	269.43	6971.23	10123.84	-188.54	-10122.09	40.4136288	-104.8649295	0.00
16404.00	90.02	269.42	6971.20	10223.84	-189.55	-10222.08	40.4136259	-104.8652886	0.00
16504.00	90.02	269.42	6971.16	10323.83	-190.55	-10322.08	40.4136230	-104.8656477	0.00
16604.00	90.02	269.42	6971.13	10423.83	-191.56	-10422.07	40.4136201	-104.8660068	0.00
16704.00	90.02	269.42	6971.10	10523.83	-192.58	-10522.07	40.4136172	-104.8663658	0.00
16804.00	90.01	269.42	6971.08	10623.82	-193.59	-10622.06	40.4136143	-104.8667249	0.00
16904.00	90.01	269.41	6971.06	10723.82	-194.62	-10722.06	40.4136114	-104.8670840	0.00
17004.00	90.01	269.41	6971.04	10823.82	-195.64	-10822.05	40.4136085	-104.8674431	0.00
17104.00	90.01	269.41	6971.03	10923.82	-196.67	-10922.05	40.4136055	-104.8678022	0.00
17204.00	90.01	269.41	6971.02	11023.81	-197.70	-11022.04	40.4136026	-104.8681613	0.00
17304.00	90.00	269.40	6971.01	11123.81	-198.74	-11122.03	40.4135996	-104.8685204	0.00
17404.00	90.00	269.40	6971.00	11223.81	-199.78	-11222.03	40.4135966	-104.8688795	0.00
17504.00	90.00	269.40	6971.00	11323.80	-200.83	-11322.02	40.4135936	-104.8692386	0.00
17525.01	90.00	269.40	6971.00	11344.81	-201.05	-11343.03	40.4135930	-104.8693140	0.00
17604.00	90.00	269.40	6971.00	11423.80	-201.87	-11422.02	40.4135906	-104.8695976	0.00
17624.98	90.00	269.40	6971.00	11444.79	-202.09	-11443.00	40.4135900	-104.8696730	0.00



Planned Wellpath Report

BOST FARM 32N-11B-L (REV-C.0) PWP

Page 1 of 10



REFERENCE WELLPATH IDENTIFICATION

Operator	SRC ENERGY	Slot	SLOT#01 BOST FARM 32N-11B-L (2666'FSL & 1054'FWL, SEC.07)
Area	COLORADO	Well	BOST FARM 32N-11B-L
Field	WELD COUNTY (NAD83,TRUE NORTH)	Wellbore	BOST FARM 32N-11B-L PWB
Facility	SEC.07-T05N-R66W		

REPORT SETUP INFORMATION

Projection System	NAD83 / Lambert Colorado SP, Northern Zone (501), US feet	Software System	WellArchitect® 5.1
North Reference	True	User	Bushjamh
Scale	0.999961	Report Generated	01/03/2019 at 13:55
Convergence at slot	0.43° East	Database/Source file	WA_DEN_Denver_Defn/BOST FARM 32N-11B-L (REV-C.0) PWP PR.xml

WELLPATH LOCATION

	Local coordinates		Grid coordinates		Geographic coordinates	
	North[ft]	East[ft]	Easting[US ft]	Northing[US ft]	Latitude	Longitude
Slot Location	115.49	-204.13	3186956.60	1394423.72	40°24'50.947"N	104°49'42.888"W
Facility Reference Pt			3187161.59	1394309.79	40°24'49.806"N	104°49'40.249"W
Field Reference Pt			3171284.48	1426358.81	40°30'07.643"N	104°53'02.634"W

WELLPATH DATUM

Calculation method	Minimum curvature	IKON 12 (4') (RKB) to Facility Vertical Datum	4881.00ft
Horizontal Reference Pt	Slot	IKON 12 (4') (RKB) to Mean Sea Level	4881.00ft
Vertical Reference Pt	IKON 12 (4') (RKB)	IKON 12 (4') (RKB) to Mud Line at Slot (SLOT#01 BOST FARM 32N-11B-L (2666'FSL & 1054'FWL, SEC.07))	4881.00ft
MD Reference Pt	IKON 12 (4') (RKB)	Section Origin	N 0.00, E 0.00 ft
Field Vertical Reference	Mean Sea Level	Section Azimuth	268.99°



Planned Wellpath Report

BOST FARM 32N-11B-L (REV-C.0) PWP

Page 2 of 10



REFERENCE WELLPATH IDENTIFICATION

Operator	SRC ENERGY	Slot	SLOT#01 BOST FARM 32N-11B-L (2666'FSL & 1054'FWL, SEC.07)
Area	COLORADO	Well	BOST FARM 32N-11B-L
Field	WELD COUNTY (NAD83,TRUE NORTH)	Wellbore	BOST FARM 32N-11B-L PWB
Facility	SEC.07-T05N-R66W		

WELLPATH DATA (184 stations) † = interpolated/extrapolated station

MD [ft]	Inclination [°]	Azimuth [°]	TVD [ft]	Vert Sect [ft]	North [ft]	East [ft]	Latitude	Longitude	DLS [°/100ft]	Comments
0.00†	0.000	260.082	0.00	0.00	0.00	0.00	40°24'50.947"N	104°49'42.888"W	0.00	
4.00	0.000	260.082	4.00	0.00	0.00	0.00	40°24'50.947"N	104°49'42.888"W	0.00	Tie On
104.00†	0.000	260.082	104.00	0.00	0.00	0.00	40°24'50.947"N	104°49'42.888"W	0.00	
204.00†	0.000	260.082	204.00	0.00	0.00	0.00	40°24'50.947"N	104°49'42.888"W	0.00	
304.00†	0.000	260.082	304.00	0.00	0.00	0.00	40°24'50.947"N	104°49'42.888"W	0.00	
404.00†	0.000	260.082	404.00	0.00	0.00	0.00	40°24'50.947"N	104°49'42.888"W	0.00	
504.00†	0.000	260.082	504.00	0.00	0.00	0.00	40°24'50.947"N	104°49'42.888"W	0.00	
604.00†	0.000	260.082	604.00	0.00	0.00	0.00	40°24'50.947"N	104°49'42.888"W	0.00	
704.00†	0.000	260.082	704.00	0.00	0.00	0.00	40°24'50.947"N	104°49'42.888"W	0.00	
804.00†	0.000	260.082	804.00	0.00	0.00	0.00	40°24'50.947"N	104°49'42.888"W	0.00	
904.00†	0.000	260.082	904.00	0.00	0.00	0.00	40°24'50.947"N	104°49'42.888"W	0.00	
1004.00†	0.000	260.082	1004.00	0.00	0.00	0.00	40°24'50.947"N	104°49'42.888"W	0.00	
1104.00†	0.000	260.082	1104.00	0.00	0.00	0.00	40°24'50.947"N	104°49'42.888"W	0.00	
1200.00	0.000	260.082	1200.00	0.00	0.00	0.00	40°24'50.947"N	104°49'42.888"W	0.00	End of Tangent
1204.00†	0.080	260.082	1204.00	0.00	0.00	0.00	40°24'50.947"N	104°49'42.888"W	2.00	
1304.00†	2.080	260.082	1303.98	1.86	-0.33	-1.86	40°24'50.944"N	104°49'42.912"W	2.00	
1404.00†	4.080	260.082	1403.83	7.17	-1.25	-7.15	40°24'50.935"N	104°49'42.980"W	2.00	
1504.00†	6.080	260.082	1503.43	15.92	-2.78	-15.87	40°24'50.920"N	104°49'43.093"W	2.00	
1525.53	6.511	260.082	1524.83	18.25	-3.18	-18.20	40°24'50.916"N	104°49'43.123"W	2.00	End of Build
1604.00†	6.511	260.082	1602.79	27.04	-4.71	-26.96	40°24'50.901"N	104°49'43.237"W	0.00	
1704.00†	6.511	260.082	1702.15	38.25	-6.67	-38.13	40°24'50.881"N	104°49'43.381"W	0.00	
1804.00†	6.511	260.082	1801.50	49.45	-8.62	-49.30	40°24'50.862"N	104°49'43.525"W	0.00	
1904.00†	6.511	260.082	1900.86	60.65	-10.57	-60.47	40°24'50.843"N	104°49'43.670"W	0.00	
2004.00†	6.511	260.082	2000.21	71.85	-12.53	-71.64	40°24'50.823"N	104°49'43.814"W	0.00	
2104.00†	6.511	260.082	2099.57	83.05	-14.48	-82.81	40°24'50.804"N	104°49'43.959"W	0.00	
2204.00†	6.511	260.082	2198.92	94.26	-16.43	-93.98	40°24'50.785"N	104°49'44.103"W	0.00	
2304.00†	6.511	260.082	2298.28	105.46	-18.39	-105.15	40°24'50.766"N	104°49'44.247"W	0.00	
2404.00†	6.511	260.082	2397.63	116.66	-20.34	-116.32	40°24'50.746"N	104°49'44.392"W	0.00	
2504.00†	6.511	260.082	2496.99	127.86	-22.29	-127.49	40°24'50.727"N	104°49'44.536"W	0.00	
2604.00†	6.511	260.082	2596.34	139.06	-24.24	-138.66	40°24'50.708"N	104°49'44.681"W	0.00	



Planned Wellpath Report

BOST FARM 32N-11B-L (REV-C.0) PWP

Page 3 of 10



REFERENCE WELLPATH IDENTIFICATION

Operator	SRC ENERGY	Slot	SLOT#01 BOST FARM 32N-11B-L (2666'FSL & 1054'FWL, SEC.07)
Area	COLORADO	Well	BOST FARM 32N-11B-L
Field	WELD COUNTY (NAD83,TRUE NORTH)	Wellbore	BOST FARM 32N-11B-L PWB
Facility	SEC.07-T05N-R66W		

WELLPATH DATA (184 stations) † = interpolated/extrapolated station

MD [ft]	Inclination [°]	Azimuth [°]	TVD [ft]	Vert Sect [ft]	North [ft]	East [ft]	Latitude	Longitude	DLS [°/100ft]	Comments
2704.00†	6.511	260.082	2695.70	150.27	-26.20	-149.83	40°24'50.688"N	104°49'44.825"W	0.00	
2804.00†	6.511	260.082	2795.05	161.47	-28.15	-161.00	40°24'50.669"N	104°49'44.969"W	0.00	
2904.00†	6.511	260.082	2894.41	172.67	-30.10	-172.17	40°24'50.650"N	104°49'45.114"W	0.00	
3004.00†	6.511	260.082	2993.76	183.87	-32.06	-183.34	40°24'50.630"N	104°49'45.258"W	0.00	
3104.00†	6.511	260.082	3093.12	195.07	-34.01	-194.50	40°24'50.611"N	104°49'45.403"W	0.00	
3204.00†	6.511	260.082	3192.48	206.28	-35.96	-205.67	40°24'50.592"N	104°49'45.547"W	0.00	
3304.00†	6.511	260.082	3291.83	217.48	-37.91	-216.84	40°24'50.573"N	104°49'45.691"W	0.00	
3404.00†	6.511	260.082	3391.19	228.68	-39.87	-228.01	40°24'50.553"N	104°49'45.836"W	0.00	
3504.00†	6.511	260.082	3490.54	239.88	-41.82	-239.18	40°24'50.534"N	104°49'45.980"W	0.00	
3604.00†	6.511	260.082	3589.90	251.09	-43.77	-250.35	40°24'50.515"N	104°49'46.125"W	0.00	
3704.00†	6.511	260.082	3689.25	262.29	-45.73	-261.52	40°24'50.495"N	104°49'46.269"W	0.00	
3804.00†	6.511	260.082	3788.61	273.49	-47.68	-272.69	40°24'50.476"N	104°49'46.413"W	0.00	
3904.00†	6.511	260.082	3887.96	284.69	-49.63	-283.86	40°24'50.457"N	104°49'46.558"W	0.00	
4004.00†	6.511	260.082	3987.32	295.89	-51.59	-295.03	40°24'50.437"N	104°49'46.702"W	0.00	
4104.00†	6.511	260.082	4086.67	307.10	-53.54	-306.20	40°24'50.418"N	104°49'46.847"W	0.00	
4204.00†	6.511	260.082	4186.03	318.30	-55.49	-317.37	40°24'50.399"N	104°49'46.991"W	0.00	
4304.00†	6.511	260.082	4285.38	329.50	-57.44	-328.54	40°24'50.380"N	104°49'47.135"W	0.00	
4404.00†	6.511	260.082	4384.74	340.70	-59.40	-339.71	40°24'50.360"N	104°49'47.280"W	0.00	
4504.00†	6.511	260.082	4484.09	351.90	-61.35	-350.88	40°24'50.341"N	104°49'47.424"W	0.00	
4604.00†	6.511	260.082	4583.45	363.11	-63.30	-362.05	40°24'50.322"N	104°49'47.569"W	0.00	
4704.00†	6.511	260.082	4682.80	374.31	-65.26	-373.21	40°24'50.302"N	104°49'47.713"W	0.00	
4804.00†	6.511	260.082	4782.16	385.51	-67.21	-384.38	40°24'50.283"N	104°49'47.857"W	0.00	
4904.00†	6.511	260.082	4881.51	396.71	-69.16	-395.55	40°24'50.264"N	104°49'48.002"W	0.00	
5004.00†	6.511	260.082	4980.87	407.91	-71.11	-406.72	40°24'50.244"N	104°49'48.146"W	0.00	
5104.00†	6.511	260.082	5080.22	419.12	-73.07	-417.89	40°24'50.225"N	104°49'48.291"W	0.00	
5204.00†	6.511	260.082	5179.58	430.32	-75.02	-429.06	40°24'50.206"N	104°49'48.435"W	0.00	
5304.00†	6.511	260.082	5278.93	441.52	-76.97	-440.23	40°24'50.187"N	104°49'48.579"W	0.00	
5404.00†	6.511	260.082	5378.29	452.72	-78.93	-451.40	40°24'50.167"N	104°49'48.724"W	0.00	
5504.00†	6.511	260.082	5477.64	463.93	-80.88	-462.57	40°24'50.148"N	104°49'48.868"W	0.00	
5604.00†	6.511	260.082	5577.00	475.13	-82.83	-473.74	40°24'50.129"N	104°49'49.013"W	0.00	



Planned Wellpath Report

BOST FARM 32N-11B-L (REV-C.0) PWP

Page 4 of 10



REFERENCE WELLPATH IDENTIFICATION

Operator	SRC ENERGY	Slot	SLOT#01 BOST FARM 32N-11B-L (2666'FSL & 1054'FWL, SEC.07)
Area	COLORADO	Well	BOST FARM 32N-11B-L
Field	WELD COUNTY (NAD83,TRUE NORTH)	Wellbore	BOST FARM 32N-11B-L PWB
Facility	SEC.07-T05N-R66W		

WELLPATH DATA (184 stations) † = interpolated/extrapolated station

MD [ft]	Inclination [°]	Azimuth [°]	TVD [ft]	Vert Sect [ft]	North [ft]	East [ft]	Latitude	Longitude	DLS [°/100ft]	Comments
5704.00†	6.511	260.082	5676.35	486.33	-84.79	-484.91	40°24'50.109"N	104°49'49.157"W	0.00	
5804.00†	6.511	260.082	5775.71	497.53	-86.74	-496.08	40°24'50.090"N	104°49'49.301"W	0.00	
5904.00†	6.511	260.082	5875.06	508.73	-88.69	-507.25	40°24'50.071"N	104°49'49.446"W	0.00	
6004.00†	6.511	260.082	5974.42	519.94	-90.64	-518.42	40°24'50.051"N	104°49'49.590"W	0.00	
6104.00†	6.511	260.082	6073.77	531.14	-92.60	-529.59	40°24'50.032"N	104°49'49.735"W	0.00	
6204.00†	6.511	260.082	6173.13	542.34	-94.55	-540.76	40°24'50.013"N	104°49'49.879"W	0.00	
6304.00†	6.511	260.082	6272.48	553.54	-96.50	-551.92	40°24'49.994"N	104°49'50.023"W	0.00	
6404.00†	6.511	260.082	6371.84	564.74	-98.46	-563.09	40°24'49.974"N	104°49'50.168"W	0.00	
6454.16	6.511	260.082	6421.67	570.36	-99.44	-568.70	40°24'49.965"N	104°49'50.240"W	0.00	End of Tangent
6504.00†	10.959	264.014	6470.92	577.88	-100.42	-576.20	40°24'49.955"N	104°49'50.337"W	9.00	
6604.00†	19.934	266.629	6567.21	604.44	-102.41	-602.72	40°24'49.935"N	104°49'50.680"W	9.00	
6704.00†	28.925	267.656	6658.17	645.73	-104.41	-643.99	40°24'49.915"N	104°49'51.213"W	9.00	
6804.00†	37.919	268.226	6741.55	700.74	-106.35	-698.98	40°24'49.896"N	104°49'51.924"W	9.00	
6904.00†	46.916	268.604	6815.30	768.12	-108.20	-766.33	40°24'49.878"N	104°49'52.795"W	9.00	
7004.00†	55.913	268.884	6877.60	846.21	-109.90	-844.40	40°24'49.861"N	104°49'53.804"W	9.00	
7104.00†	64.911	269.110	6926.93	933.08	-111.41	-931.26	40°24'49.846"N	104°49'54.927"W	9.00	
7204.00†	73.909	269.305	6962.06	1026.60	-112.70	-1024.77	40°24'49.833"N	104°49'56.136"W	9.00	
7304.00†	82.907	269.482	6982.13	1124.45	-113.73	-1122.62	40°24'49.823"N	104°49'57.401"W	9.00	
7384.83	90.181	269.620	6987.00†	1205.08	-114.36	-1203.25	40°24'49.817"N	104°49'58.444"W	9.00	End of 3D Arc
7404.00†	90.180	269.620	6986.94	1224.25	-114.49	-1222.42	40°24'49.816"N	104°49'58.691"W	0.00	
7504.00†	90.179	269.618	6986.63	1324.24	-115.16	-1322.41	40°24'49.809"N	104°49'59.984"W	0.00	
7604.00†	90.177	269.616	6986.32	1424.23	-115.83	-1422.41	40°24'49.802"N	104°50'01.277"W	0.00	
7704.00†	90.175	269.613	6986.01	1524.23	-116.50	-1522.41	40°24'49.796"N	104°50'02.570"W	0.00	
7804.00†	90.173	269.611	6985.70	1624.22	-117.18	-1622.41	40°24'49.789"N	104°50'03.862"W	0.00	
7904.00†	90.172	269.609	6985.40	1724.21	-117.86	-1722.40	40°24'49.782"N	104°50'05.155"W	0.00	
8004.00†	90.170	269.607	6985.11	1824.21	-118.54	-1822.40	40°24'49.775"N	104°50'06.448"W	0.00	
8104.00†	90.168	269.605	6984.81	1924.20	-119.23	-1922.40	40°24'49.768"N	104°50'07.741"W	0.00	
8204.00†	90.166	269.603	6984.52	2024.20	-119.92	-2022.39	40°24'49.761"N	104°50'09.034"W	0.00	
8304.00†	90.164	269.600	6984.23	2124.19	-120.62	-2122.39	40°24'49.754"N	104°50'10.326"W	0.00	
8404.00†	90.163	269.598	6983.95	2224.18	-121.31	-2222.39	40°24'49.747"N	104°50'11.619"W	0.00	



Planned Wellpath Report

BOST FARM 32N-11B-L (REV-C.0) PWP

Page 5 of 10



REFERENCE WELLPATH IDENTIFICATION

Operator	SRC ENERGY	Slot	SLOT#01 BOST FARM 32N-11B-L (2666'FSL & 1054'FWL, SEC.07)
Area	COLORADO	Well	BOST FARM 32N-11B-L
Field	WELD COUNTY (NAD83,TRUE NORTH)	Wellbore	BOST FARM 32N-11B-L PWB
Facility	SEC.07-T05N-R66W		

WELLPATH DATA (184 stations) † = interpolated/extrapolated station

MD [ft]	Inclination [°]	Azimuth [°]	TVD [ft]	Vert Sect [ft]	North [ft]	East [ft]	Latitude	Longitude	DLS [°/100ft]	Comments
8504.00†	90.161	269.596	6983.66	2324.18	-122.02	-2322.39	40°24'49.740"N	104°50'12.912"W	0.00	
8604.00†	90.159	269.594	6983.38	2424.17	-122.72	-2422.38	40°24'49.733"N	104°50'14.205"W	0.00	
8704.00†	90.157	269.592	6983.11	2524.17	-123.44	-2522.38	40°24'49.726"N	104°50'15.497"W	0.00	
8804.00†	90.156	269.590	6982.83	2624.16	-124.15	-2622.38	40°24'49.719"N	104°50'16.790"W	0.00	
8904.00†	90.154	269.587	6982.56	2724.15	-124.87	-2722.37	40°24'49.712"N	104°50'18.083"W	0.00	
9004.00†	90.152	269.585	6982.30	2824.15	-125.59	-2822.37	40°24'49.705"N	104°50'19.376"W	0.00	
9104.00†	90.150	269.583	6982.03	2924.14	-126.32	-2922.37	40°24'49.697"N	104°50'20.668"W	0.00	
9204.00†	90.148	269.581	6981.77	3024.14	-127.05	-3022.36	40°24'49.690"N	104°50'21.961"W	0.00	
9304.00†	90.147	269.579	6981.52	3124.13	-127.78	-3122.36	40°24'49.683"N	104°50'23.254"W	0.00	
9404.00†	90.145	269.577	6981.26	3224.13	-128.52	-3222.36	40°24'49.675"N	104°50'24.547"W	0.00	
9504.00†	90.143	269.574	6981.01	3324.12	-129.26	-3322.36	40°24'49.668"N	104°50'25.839"W	0.00	
9604.00†	90.141	269.572	6980.76	3424.11	-130.00	-3422.35	40°24'49.660"N	104°50'27.132"W	0.00	
9704.00†	90.139	269.570	6980.52	3524.11	-130.75	-3522.35	40°24'49.653"N	104°50'28.425"W	0.00	
9804.00†	90.138	269.568	6980.28	3624.10	-131.50	-3622.35	40°24'49.645"N	104°50'29.718"W	0.00	
9904.00†	90.136	269.566	6980.04	3724.10	-132.26	-3722.34	40°24'49.637"N	104°50'31.010"W	0.00	
10004.00†	90.134	269.563	6979.80	3824.09	-133.02	-3822.34	40°24'49.630"N	104°50'32.303"W	0.00	
10104.00†	90.132	269.561	6979.57	3924.09	-133.78	-3922.34	40°24'49.622"N	104°50'33.596"W	0.00	
10204.00†	90.131	269.559	6979.34	4024.08	-134.55	-4022.33	40°24'49.614"N	104°50'34.889"W	0.00	
10304.00†	90.129	269.557	6979.11	4124.08	-135.32	-4122.33	40°24'49.607"N	104°50'36.182"W	0.00	
10404.00†	90.127	269.555	6978.89	4224.07	-136.10	-4222.33	40°24'49.599"N	104°50'37.474"W	0.00	
10504.00†	90.125	269.553	6978.67	4324.07	-136.88	-4322.32	40°24'49.591"N	104°50'38.767"W	0.00	
10604.00†	90.123	269.550	6978.45	4424.06	-137.66	-4422.32	40°24'49.583"N	104°50'40.060"W	0.00	
10704.00†	90.122	269.548	6978.24	4524.06	-138.45	-4522.32	40°24'49.575"N	104°50'41.353"W	0.00	
10804.00†	90.120	269.546	6978.03	4624.05	-139.24	-4622.31	40°24'49.567"N	104°50'42.645"W	0.00	
10904.00†	90.118	269.544	6977.82	4724.05	-140.03	-4722.31	40°24'49.559"N	104°50'43.938"W	0.00	
11004.00†	90.116	269.542	6977.62	4824.04	-140.83	-4822.31	40°24'49.551"N	104°50'45.231"W	0.00	
11104.00†	90.114	269.540	6977.42	4924.04	-141.63	-4922.30	40°24'49.543"N	104°50'46.524"W	0.00	
11204.00†	90.113	269.537	6977.22	5024.03	-142.44	-5022.30	40°24'49.535"N	104°50'47.816"W	0.00	
11304.00†	90.111	269.535	6977.02	5124.03	-143.24	-5122.30	40°24'49.526"N	104°50'49.109"W	0.00	
11404.00†	90.109	269.533	6976.83	5224.02	-144.06	-5222.29	40°24'49.518"N	104°50'50.402"W	0.00	



Planned Wellpath Report

BOST FARM 32N-11B-L (REV-C.0) PWP

Page 6 of 10



REFERENCE WELLPATH IDENTIFICATION

Operator	SRC ENERGY	Slot	SLOT#01 BOST FARM 32N-11B-L (2666'FSL & 1054'FWL, SEC.07)
Area	COLORADO	Well	BOST FARM 32N-11B-L
Field	WELD COUNTY (NAD83,TRUE NORTH)	Wellbore	BOST FARM 32N-11B-L PWB
Facility	SEC.07-T05N-R66W		

WELLPATH DATA (184 stations) † = interpolated/extrapolated station

MD [ft]	Inclination [°]	Azimuth [°]	TVD [ft]	Vert Sect [ft]	North [ft]	East [ft]	Latitude	Longitude	DLS [°/100ft]	Comments
11504.00†	90.107	269.531	6976.64	5324.02	-144.87	-5322.29	40°24'49.510"N	104°50'51.695"W	0.00	
11604.00†	90.106	269.529	6976.46	5424.01	-145.70	-5422.29	40°24'49.502"N	104°50'52.987"W	0.00	
11704.00†	90.104	269.527	6976.27	5524.01	-146.52	-5522.28	40°24'49.493"N	104°50'54.280"W	0.00	
11804.00†	90.102	269.524	6976.09	5624.00	-147.35	-5622.28	40°24'49.485"N	104°50'55.573"W	0.00	
11904.00†	90.100	269.522	6975.92	5724.00	-148.18	-5722.28	40°24'49.476"N	104°50'56.866"W	0.00	
12004.00†	90.098	269.520	6975.74	5824.00	-149.02	-5822.27	40°24'49.468"N	104°50'58.158"W	0.00	
12104.00†	90.097	269.518	6975.57	5923.99	-149.86	-5922.27	40°24'49.459"N	104°50'59.451"W	0.00	
12204.00†	90.095	269.516	6975.41	6023.99	-150.70	-6022.26	40°24'49.451"N	104°51'00.744"W	0.00	
12304.00†	90.093	269.513	6975.24	6123.98	-151.55	-6122.26	40°24'49.442"N	104°51'02.037"W	0.00	
12404.00†	90.091	269.511	6975.08	6223.98	-152.40	-6222.26	40°24'49.434"N	104°51'03.329"W	0.00	
12504.00†	90.090	269.509	6974.92	6323.97	-153.25	-6322.25	40°24'49.425"N	104°51'04.622"W	0.00	
12604.00†	90.088	269.507	6974.77	6423.97	-154.11	-6422.25	40°24'49.416"N	104°51'05.915"W	0.00	
12704.00†	90.086	269.505	6974.62	6523.97	-154.97	-6522.25	40°24'49.407"N	104°51'07.208"W	0.00	
12804.00†	90.084	269.503	6974.47	6623.96	-155.84	-6622.24	40°24'49.398"N	104°51'08.500"W	0.00	
12904.00†	90.082	269.500	6974.32	6723.96	-156.71	-6722.24	40°24'49.390"N	104°51'09.793"W	0.00	
13004.00†	90.081	269.498	6974.18	6823.95	-157.58	-6822.23	40°24'49.381"N	104°51'11.086"W	0.00	
13104.00†	90.079	269.496	6974.04	6923.95	-158.46	-6922.23	40°24'49.372"N	104°51'12.379"W	0.00	
13204.00†	90.077	269.494	6973.91	7023.94	-159.34	-7022.23	40°24'49.363"N	104°51'13.671"W	0.00	
13304.00†	90.075	269.492	6973.77	7123.94	-160.23	-7122.22	40°24'49.354"N	104°51'14.964"W	0.00	
13404.00†	90.073	269.490	6973.64	7223.94	-161.12	-7222.22	40°24'49.345"N	104°51'16.257"W	0.00	
13504.00†	90.072	269.487	6973.52	7323.93	-162.01	-7322.21	40°24'49.336"N	104°51'17.550"W	0.00	
13604.00†	90.070	269.485	6973.39	7423.93	-162.90	-7422.21	40°24'49.326"N	104°51'18.842"W	0.00	
13704.00†	90.068	269.483	6973.27	7523.93	-163.80	-7522.21	40°24'49.317"N	104°51'20.135"W	0.00	
13804.00†	90.066	269.481	6973.15	7623.92	-164.71	-7622.20	40°24'49.308"N	104°51'21.428"W	0.00	
13904.00†	90.065	269.479	6973.04	7723.92	-165.62	-7722.20	40°24'49.299"N	104°51'22.720"W	0.00	
14004.00†	90.063	269.477	6972.93	7823.91	-166.53	-7822.19	40°24'49.289"N	104°51'24.013"W	0.00	
14104.00†	90.061	269.474	6972.82	7923.91	-167.44	-7922.19	40°24'49.280"N	104°51'25.306"W	0.00	
14204.00†	90.059	269.472	6972.72	8023.91	-168.36	-8022.18	40°24'49.271"N	104°51'26.599"W	0.00	
14304.00†	90.057	269.470	6972.61	8123.90	-169.29	-8122.18	40°24'49.261"N	104°51'27.891"W	0.00	
14404.00†	90.056	269.468	6972.52	8223.90	-170.21	-8222.18	40°24'49.252"N	104°51'29.184"W	0.00	



Planned Wellpath Report

BOST FARM 32N-11B-L (REV-C.0) PWP

Page 7 of 10



REFERENCE WELLPATH IDENTIFICATION

Operator	SRC ENERGY	Slot	SLOT#01 BOST FARM 32N-11B-L (2666'FSL & 1054'FWL, SEC.07)
Area	COLORADO	Well	BOST FARM 32N-11B-L
Field	WELD COUNTY (NAD83,TRUE NORTH)	Wellbore	BOST FARM 32N-11B-L PWB
Facility	SEC.07-T05N-R66W		

WELLPATH DATA (184 stations) † = interpolated/extrapolated station

MD [ft]	Inclination [°]	Azimuth [°]	TVD [ft]	Vert Sect [ft]	North [ft]	East [ft]	Latitude	Longitude	DLS [°/100ft]	Comments
14504.00†	90.054	269.466	6972.42	8323.90	-171.14	-8322.17	40°24'49.242"N	104°51'30.477"W	0.00	
14604.00†	90.052	269.464	6972.33	8423.89	-172.08	-8422.17	40°24'49.233"N	104°51'31.770"W	0.00	
14704.00†	90.050	269.461	6972.24	8523.89	-173.02	-8522.16	40°24'49.223"N	104°51'33.062"W	0.00	
14804.00†	90.049	269.459	6972.15	8623.89	-173.96	-8622.16	40°24'49.213"N	104°51'34.355"W	0.00	
14904.00†	90.047	269.457	6972.07	8723.88	-174.90	-8722.15	40°24'49.204"N	104°51'35.648"W	0.00	
15004.00†	90.045	269.455	6971.99	8823.88	-175.85	-8822.15	40°24'49.194"N	104°51'36.941"W	0.00	
15104.00†	90.043	269.453	6971.91	8923.88	-176.81	-8922.14	40°24'49.184"N	104°51'38.233"W	0.00	
15204.00†	90.041	269.450	6971.84	9023.87	-177.76	-9022.14	40°24'49.174"N	104°51'39.526"W	0.00	
15304.00†	90.040	269.448	6971.77	9123.87	-178.73	-9122.14	40°24'49.164"N	104°51'40.819"W	0.00	
15404.00†	90.038	269.446	6971.70	9223.87	-179.69	-9222.13	40°24'49.155"N	104°51'42.112"W	0.00	
15504.00†	90.036	269.444	6971.64	9323.86	-180.66	-9322.13	40°24'49.145"N	104°51'43.404"W	0.00	
15604.00†	90.034	269.442	6971.57	9423.86	-181.63	-9422.12	40°24'49.135"N	104°51'44.697"W	0.00	
15704.00†	90.032	269.440	6971.52	9523.86	-182.61	-9522.12	40°24'49.125"N	104°51'45.990"W	0.00	
15804.00†	90.031	269.437	6971.46	9623.85	-183.59	-9622.11	40°24'49.115"N	104°51'47.282"W	0.00	
15904.00†	90.029	269.435	6971.41	9723.85	-184.57	-9722.11	40°24'49.104"N	104°51'48.575"W	0.00	
16004.00†	90.027	269.433	6971.36	9823.85	-185.56	-9822.10	40°24'49.094"N	104°51'49.868"W	0.00	
16104.00†	90.025	269.431	6971.31	9923.84	-186.55	-9922.10	40°24'49.084"N	104°51'51.161"W	0.00	
16204.00†	90.024	269.429	6971.27	10023.84	-187.54	-10022.09	40°24'49.074"N	104°51'52.453"W	0.00	
16304.00†	90.022	269.427	6971.23	10123.84	-188.54	-10122.09	40°24'49.064"N	104°51'53.746"W	0.00	
16404.00†	90.020	269.424	6971.20	10223.84	-189.55	-10222.08	40°24'49.053"N	104°51'55.039"W	0.00	
16504.00†	90.018	269.422	6971.16	10323.83	-190.55	-10322.08	40°24'49.043"N	104°51'56.332"W	0.00	
16604.00†	90.016	269.420	6971.13	10423.83	-191.56	-10422.07	40°24'49.033"N	104°51'57.624"W	0.00	
16704.00†	90.015	269.418	6971.10	10523.83	-192.58	-10522.07	40°24'49.022"N	104°51'58.917"W	0.00	
16804.00†	90.013	269.416	6971.08	10623.82	-193.59	-10622.06	40°24'49.012"N	104°52'00.210"W	0.00	
16904.00†	90.011	269.414	6971.06	10723.82	-194.62	-10722.06	40°24'49.001"N	104°52'01.502"W	0.00	
17004.00†	90.009	269.411	6971.04	10823.82	-195.64	-10822.05	40°24'48.991"N	104°52'02.795"W	0.00	
17104.00†	90.008	269.409	6971.03	10923.82	-196.67	-10922.05	40°24'48.980"N	104°52'04.088"W	0.00	
17204.00†	90.006	269.407	6971.02	11023.81	-197.70	-11022.04	40°24'48.969"N	104°52'05.381"W	0.00	
17304.00†	90.004	269.405	6971.01	11123.81	-198.74	-11122.03	40°24'48.959"N	104°52'06.673"W	0.00	
17404.00†	90.002	269.403	6971.00	11223.81	-199.78	-11222.03	40°24'48.948"N	104°52'07.966"W	0.00	



Planned Wellpath Report

BOST FARM 32N-11B-L (REV-C.0) PWP

Page 8 of 10



REFERENCE WELLPATH IDENTIFICATION

Operator	SRC ENERGY	Slot	SLOT#01 BOST FARM 32N-11B-L (2666'FSL & 1054'FWL, SEC.07)
Area	COLORADO	Well	BOST FARM 32N-11B-L
Field	WELD COUNTY (NAD83,TRUE NORTH)	Wellbore	BOST FARM 32N-11B-L PWB
Facility	SEC.07-T05N-R66W		

WELLPATH DATA (184 stations) † = interpolated/extrapolated station

MD [ft]	Inclination [°]	Azimuth [°]	TVD [ft]	Vert Sect [ft]	North [ft]	East [ft]	Latitude	Longitude	DLS [°/100ft]	Comments
17504.00†	90.000	269.401	6971.00	11323.80	-200.83	-11322.02	40°24'48.937"N	104°52'09.259"W	0.00	
17525.01	90.000	269.400	6971.00 ²	11344.81	-201.05	-11343.03	40°24'48.935"N	104°52'09.530"W	0.00	End of 3D Arc
17604.00†	90.000	269.400	6971.00	11423.80	-201.87	-11422.02	40°24'48.926"N	104°52'10.552"W	0.00	
17624.98	90.000	269.400	6971.00 ³	11444.79	-202.09	-11443.00	40°24'48.924"N	104°52'10.823"W	0.00	End of Tangent

HOLE & CASING SECTIONS - Ref Wellbore: BOST FARM 32N-11B-L PWB Ref Wellpath: BOST FARM 32N-11B-L (REV-C.0) PWP

String/Diameter	Start MD [ft]	End MD [ft]	Interval [ft]	Start TVD [ft]	End TVD [ft]	Start N/S [ft]	Start E/W [ft]	End N/S [ft]	End E/W [ft]
13.5in Open Hole	4.00	1750.00	1746.00	4.00	1747.85	0.00	0.00	-7.57	-43.27
9.625in Casing Surface	4.00	1750.00	1746.00	4.00	1747.85	0.00	0.00	-7.57	-43.27
8.5in Open Hole	1750.00	17624.98	15874.98	1747.85	6971.00	-7.57	-43.27	-202.09	-11443.00



Planned Wellpath Report

BOST FARM 32N-11B-L (REV-C.0) PWP

Page 9 of 10



REFERENCE WELLPATH IDENTIFICATION

Operator	SRC ENERGY	Slot	SLOT#01 BOST FARM 32N-11B-L (2666'FSL & 1054'FWL, SEC.07)
Area	COLORADO	Well	BOST FARM 32N-11B-L
Field	WELD COUNTY (NAD83,TRUE NORTH)	Wellbore	BOST FARM 32N-11B-L PWB
Facility	SEC.07-T05N-R66W		

TARGETS

Name	MD [ft]	TVD [ft]	North [ft]	East [ft]	Grid East [US ft]	Grid North [US ft]	Latitude	Longitude	Shape
SEC.07-T05N-R66W		5.00	-115.49	204.13	3187161.59	1394309.79	40°24'49.806"N	104°49'40.249"W	polygon
SEC.11-T05N-R67W		5.00	-115.49	204.13	3187161.59	1394309.79	40°24'49.806"N	104°49'40.249"W	polygon
SEC.12-T05N-R67W		5.00	-115.49	204.13	3187161.59	1394309.79	40°24'49.806"N	104°49'40.249"W	polygon
BOST FARM 32N-11B-L BHL ON PLAT (2468'FSL & 360'FWL, SEC.11)		6920.00	-199.32	-11133.07	3175825.82	1394140.12	40°24'48.953"N	104°52'06.816"W	point
BOST FARM 32N-11B-L BPZ ON PLAT (2471'FSL & 460'FWL, SEC.11)		6920.00	-198.27	-11033.10	3175925.77	1394141.93	40°24'48.964"N	104°52'05.524"W	point
BOST FARM 32N-11B-L BHL REV-1 (2648'FSL & 360'FWL, SEC.11)		6971.00	-199.30	-11133.07	3175825.82	1394140.14	40°24'48.953"N	104°52'06.816"W	point
3) BOST FARM 32N-11B-L BHL REV-2 (2461'FSL & 50'FWL, SEC.11)	17624.98	6971.00	-202.09	-11443.00	3175515.93	1394135.00	40°24'48.924"N	104°52'10.823"W	point
BOST FARM 32N-11B-L BPZ REV-1 (2471'FSL & 460'FWL, SEC.11)		6971.00	-198.23	-11033.13	3175925.74	1394141.97	40°24'48.964"N	104°52'05.524"W	point
2) BOST FARM 32N-11B-L BPZ REV-2 (2464'FSL & 150'FWL, SEC.11)	17525.01	6971.00	-201.05	-11343.03	3175615.88	1394136.81	40°24'48.935"N	104°52'09.530"W	point
1) BOST FARM 32N-11B-L TOP OF PROD REV-1 (2546'FSL & 150'FEL, SEC.12)	7384.83	6987.00	-114.36	-1203.25	3185754.30	1394300.25	40°24'49.817"N	104°49'58.444"W	point
BOST FARM 32N-11B-L TOP OF PROD ON PLAT (2456'FSL & 150'FEL, SEC.12)		7077.00	-114.36	-1203.25	3185754.30	1394300.25	40°24'49.817"N	104°49'58.444"W	point



Planned Wellpath Report

BOST FARM 32N-11B-L (REV-C.0) PWP

Page 10 of 10

**BAKER
HUGHES**
a GE company



REFERENCE WELLPATH IDENTIFICATION			
Operator	SRC ENERGY	Slot	SLOT#01 BOST FARM 32N-11B-L (2666'FSL & 1054'FWL, SEC.07)
Area	COLORADO	Well	BOST FARM 32N-11B-L
Field	WELD COUNTY (NAD83,TRUE NORTH)	Wellbore	BOST FARM 32N-11B-L PWB
Facility	SEC.07-T05N-R66W		

SURVEY PROGRAM - Ref Wellbore: BOST FARM 32N-11B-L PWB Ref Wellpath: BOST FARM 32N-11B-L (REV-C.0) PWP				
Start MD [ft]	End MD [ft]	Positional Uncertainty Model	Log Name/Comment	Wellbore
4.00	1750.00	BHI NaviTrak (Axial)		BOST FARM 32N-11B-L PWB
1750.00	17624.98	BHI AutoTrak Curve (MagCAD+IFR1, Short spacing)		BOST FARM 32N-11B-L PWB