



February 12, 2019

Kate Graves
Reclamation Representative
Kerr-McGee Oil & Gas Onshore LP
501 N Division Blvd
Platteville, Colorado 80651

**RE: Colorado Oil & Gas Conservation Commission (COGCC)
Form 4 (Interim Reclamation Completion Notice)
AGGREGATE STATE 13N-16HZ (435830)
Kerr-McGee Oil & Gas Onshore LP (Operator: 47120)**

Dear Ms. Graves:

Apex Companies, LLC (Apex) is presenting this letter to Kerr-McGee Oil & Gas Onshore LP (Kerr-McGee) documenting the results of a vegetation assessment that demonstrates successful completion of interim reclamation efforts, per COGCC Rule 1003, on the above-referenced location in Weld County, Colorado. Attached is a topographic location map, which identifies the referenced location.

Based on site visits and the completed vegetation assessment, Apex inspectors confirmed that the unused portions of the reduced production footprint have been regraded and returned by the landowner to cropland and agricultural use. Based on this result, interim reclamation as defined by COGCC Rule 1003.e (1) has been achieved. Photographs required by Rule 1003.e (3) are also attached along with a site map illustrating photo origins.

On June 20, 2017, the site was visited and four photographs documenting crop establishment on all sides of the location were taken along with one photograph illustrating planted crops.

Apex appreciates the opportunity to provide environmental consulting services to Kerr-McGee with this project. Should you have any questions or require additional information, please do not hesitate to contact me.

Sincerely,
Apex Companies, LLC

A handwritten signature in black ink, appearing to read 'Adam Roll'.

Adam Roll
Environmental Scientist
970-589-6111
Adam.Roll@apexc.com

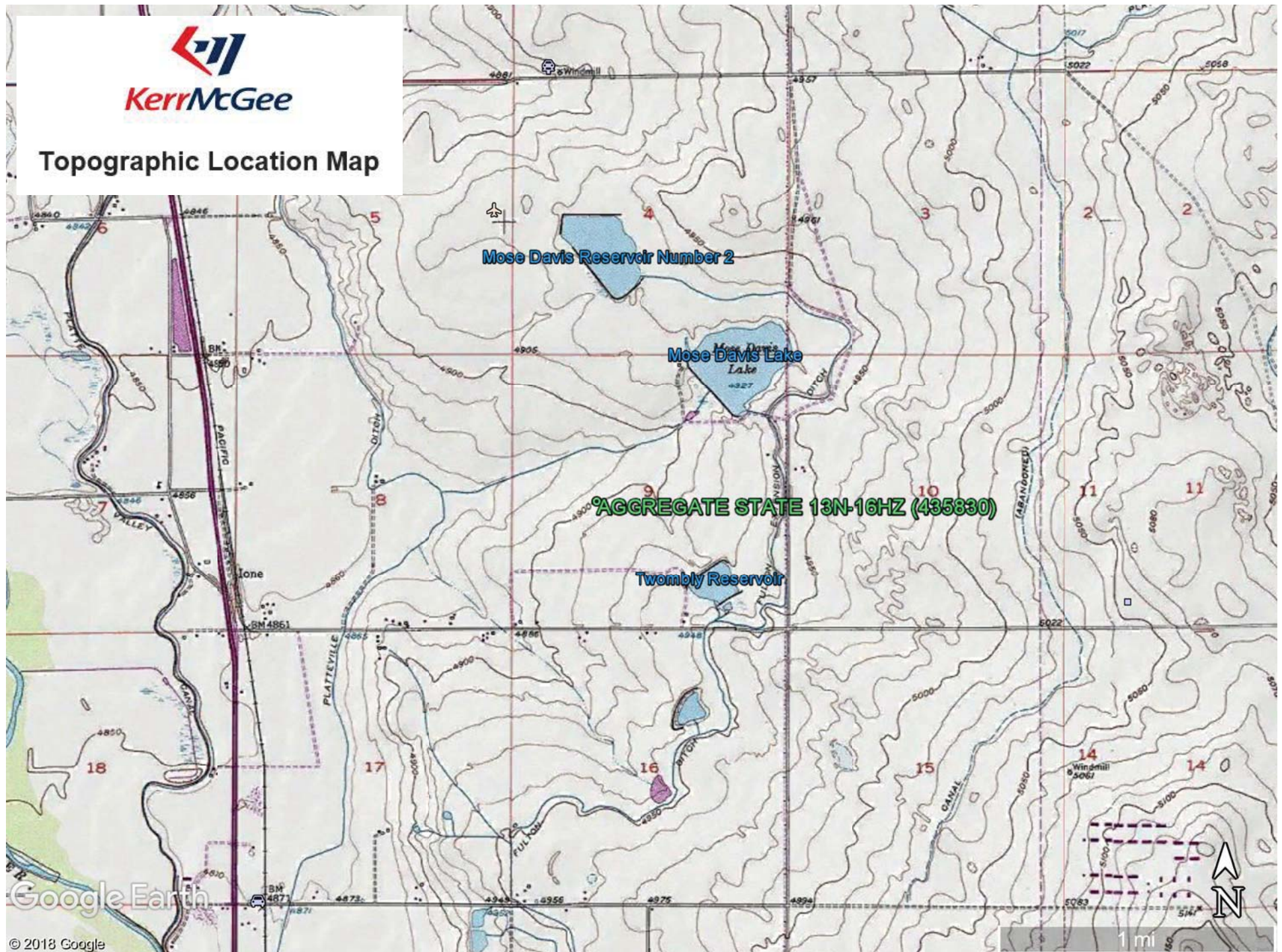
On behalf of -
Chris Hines
Oil and Gas Program Manager
970-773-9865
Chris.Hines@apexc.com

Attachments:

1. Topographic Location Map
2. Vegetation Survey Site Map
3. Vegetation Survey Photos



Topographic Location Map



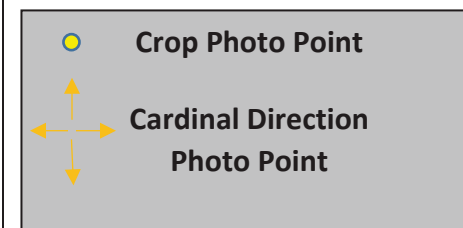
Google Earth

© 2018 Google



Vegetation Survey Map

AGGREGATE STATE 13N-16HZ
(435830)



Legal Description: NESW, Sec 9,
T2N-R66W
County: Weld
Land Use: Crop Land
Inspector: Eli Craig
Inspection Date: 06/20/2017



Vegetation Assessment Photo Log

Date Completed - 06/20/2017

Client - Kerr-McGee Oil & Gas Onshore LP

Location Name (ID) - AGGREGATE STATE 13N-16HZ (435830)



North of Disturbance - Facing South



South of Disturbance - Facing North



West of Disturbance - Facing East



East of Disturbance - Facing West

Vegetation Assessment Photo Log

Date Completed - 06/20/2017

Client - Kerr-McGee Oil & Gas Onshore LP

Location Name (ID) - AGGREGATE STATE 13N-16HZ (435830)



Crop Photo Point